

	Mar 2018		Change since Feb 2018		Change since Mar 2017	
Unemployment	Number	% Rate	Number	%	Number	%
Kent	18,265	1.9%	250	1.4%	2,225	13.9%
Great Britain	861,135	2.1%	16,260	1.9%	76,070	9.7%

	Mar 2018		Change since Feb 2018		Change since Mar 2017	
	Number	% Rate	Number	%	Number	%
Ashford	1,390	1.8%	25	1.8%	105	8.2%
Canterbury	1,495	1.4%	30	2.0%	165	12.4%
Dartford	865	1.3%	40	4.8%	55	6.8%
Dover	2,155	3.2%	15	0.7%	605	39.0%
Gravesham	1,455	2.2%	10	0.7%	50	3.6%
Maidstone	1,305	1.3%	-20	-1.5%	-35	-2.6%
Sevenoaks	535	0.8%	-10	-1.8%	30	5.9%
Shepway	1,615	2.5%	25	1.6%	135	9.1%
Swale	2,240	2.5%	115	5.4%	185	9.0%
Thanet	3,760	4.6%	60	1.6%	840	28.8%
Tonbridge and Malling	775	1.0%	-20	-2.5%	30	4.0%
Tunbridge Wells	675	0.9%	-20	-2.9%	70	11.6%
Medway	3,500	2.0%	30	0.9%	-35	-1.0%
Kent	18,265	1.9%	250	1.4%	2,225	13.9%

March 2018

The unemployment rate in Kent is 1.9%. This is below the rate for Great Britain (2.1%).

18265 people were claiming unemployment benefits in Kent. This has increased since last month.

Thanet has the highest unemployment rate at 4.6%. Sevenoaks has the lowest unemployment rate at 0.8%.

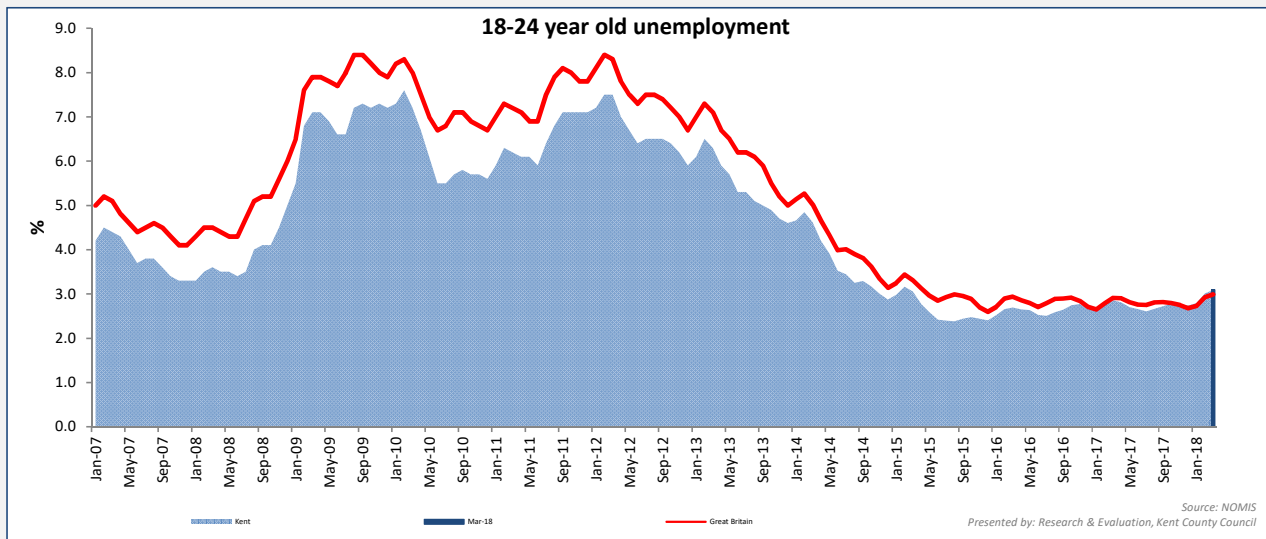
The 18-24 year old unemployment rate in Kent is 3%. They account for 21.7% of all unemployed people in the area

Thanet has the highest 18-24 year old unemployment rate in the South East at 6.8%.

Unemployment by age group

Kent	Mar 2018		Change since Feb 2018		Change since Mar 2017	
	Number	%	Number	%	Number	%
18-24	3,975	3.1%	95	2.4%	295	8.0%
25-49	9,070	1.9%	120	1.3%	980	12.1%
50-64	5,185	1.8%	30	0.6%	940	22.1%

March 2018	Number			Rate		
	18-24	25-49	50-64	18-24	25-49	50-64
Ashford	345	650	390	3.7%	1.6%	1.6%
Canterbury	360	720	410	1.3%	1.6%	1.5%
Dartford	205	450	210	2.6%	1.1%	1.2%
Dover	450	1060	640	5.4%	3.3%	2.6%
Gravesham	300	760	395	3.5%	2.1%	2.0%
Maidstone	285	680	335	2.3%	1.2%	1.1%
Sevenoaks	95	265	175	1.3%	0.7%	0.7%
Shepway	315	780	515	4.0%	2.4%	2.3%
Swale	570	1070	590	4.9%	2.4%	2.1%
Thanet	765	1920	1070	6.9%	4.8%	3.9%
Tonbridge and Malling	175	365	235	1.9%	0.9%	1.0%
Tunbridge Wells	115	340	220	1.6%	0.9%	1.0%
Kent	3975	9070	5185	3.1%	1.9%	1.8%
Medway	795	1805	895	3.1%	1.9%	1.8%

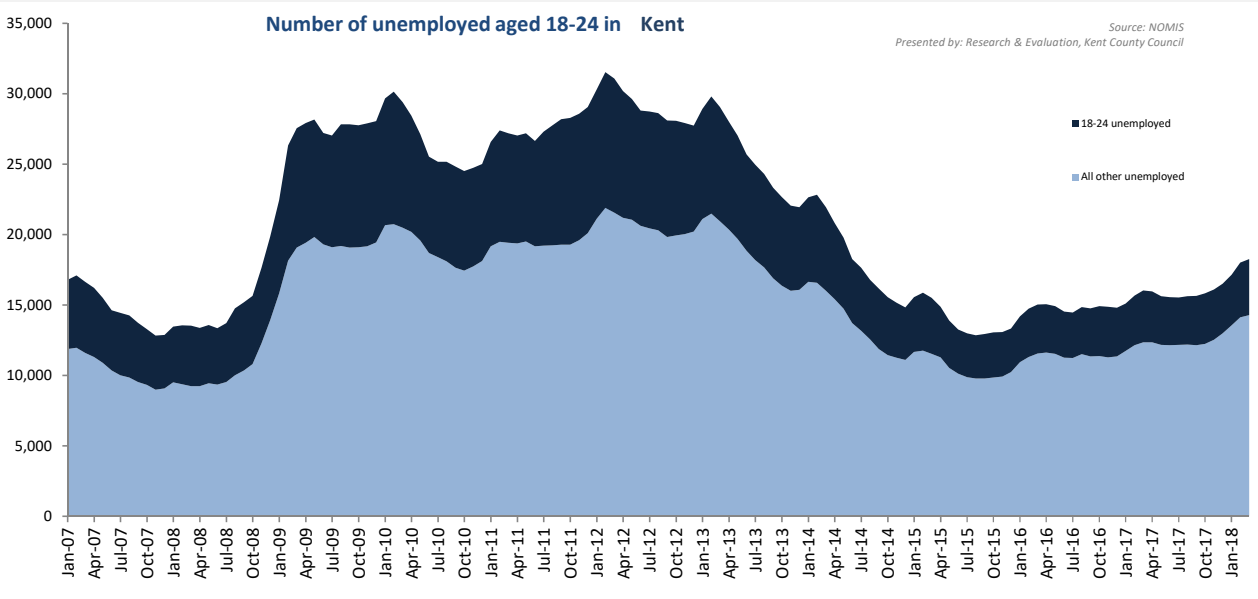
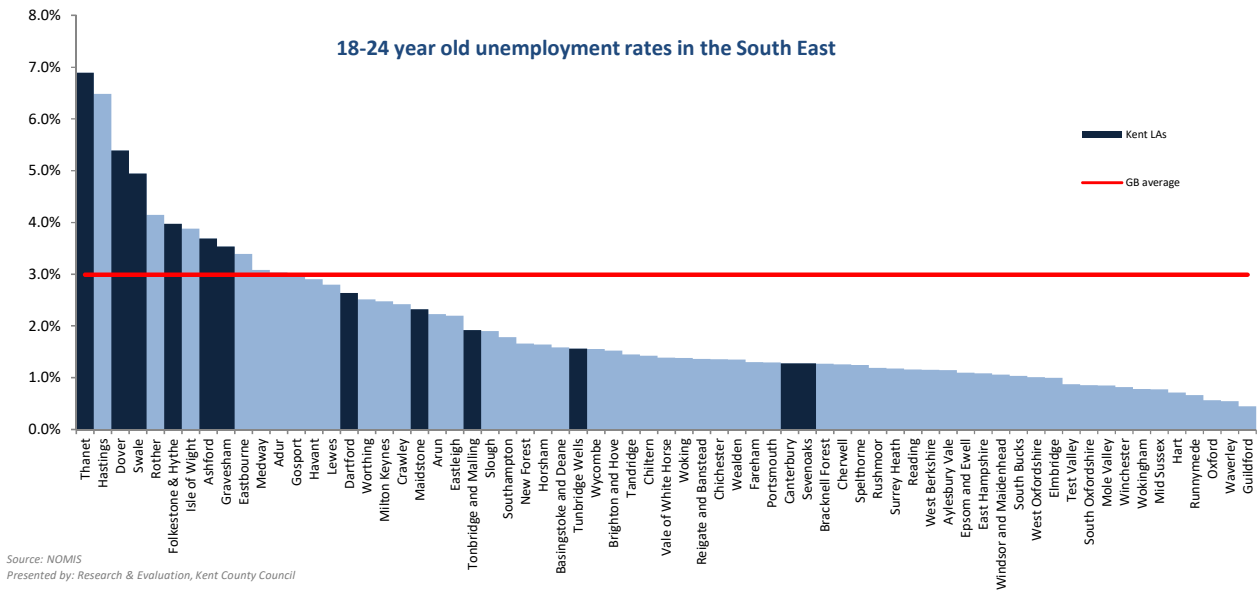


18-24 Unemployment	Number	Rate	Change since Feb 2018		Change since Mar 2017	
			Number	%	Number	%
Kent	3,975	3.1%	95	2.4%	295	8.0%
Great Britain	169,435	3.0%	3,680	2.2%	4,535	2.8%

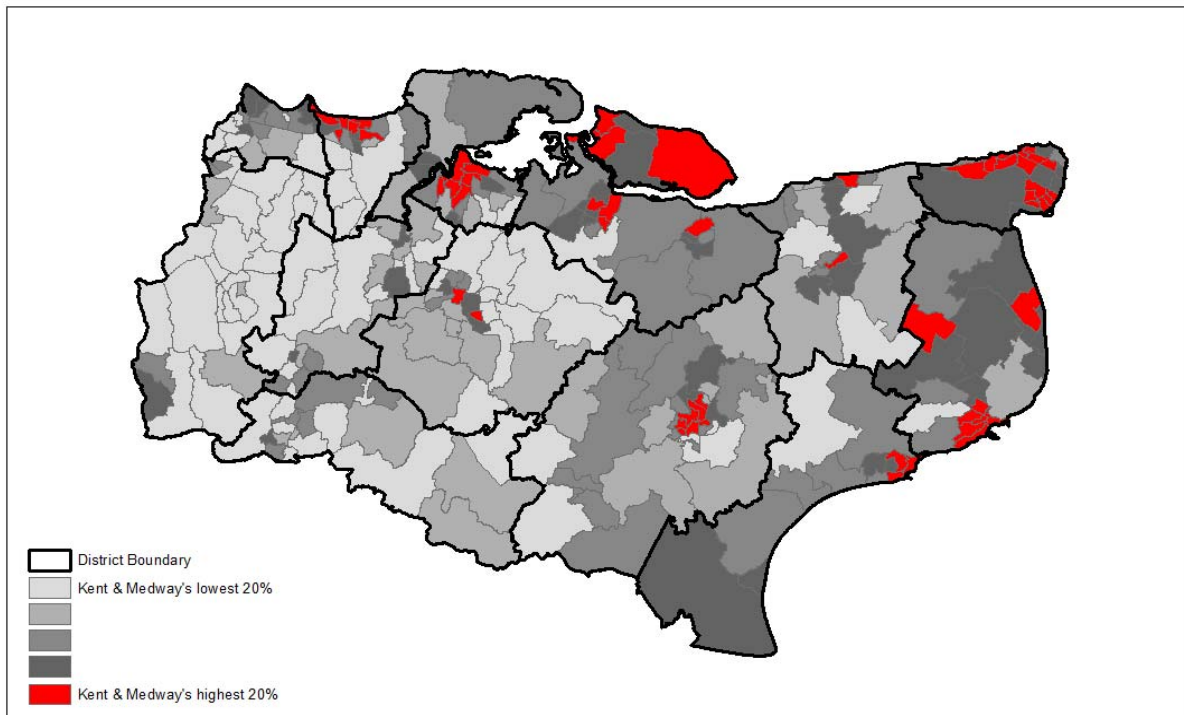
Unemployment by age group - % of all unemployed

March 2018

	Kent		Great Britain	
	Number	% of unemployed	Number	% of unemployed
18-24	3,975	21.8%	169,435	19.7%
25-49	9,070	49.7%	464,815	54.0%
50-64	5,185	28.4%	224,915	26.1%



Ward Unemployment Rates March 2018



Source: NOMIS Claimant Count
This map is produced by Strategic Business Development & Intelligence, Kent County Council
© Crown Copyright and database right 2018, Ordnance Survey 100019238



This workbook looks at the total number of people claiming either Jobseekers Allowance or Universal Credit principally for the reason of being unemployed. It also looks at the age profile of claimants, in particular at youth unemployment which is defined as those aged 18 to 24.

This workbook uses information from a dataset called The Claimant Count by Sex and Age. This experimental series counts the number of people claiming Jobseeker's Allowance plus those who claim Universal Credit who are out of work. The dataset currently includes some out of work claimants of Universal Credit who are not required to look for work; for example, due to illness or disability. Therefore this dataset is considered experimental and the results should be interpreted with caution.

Unemployment rates are calculated using the Office for National Statistics Mid-year Population Estimates 2001-2015. The resident working age population is defined as all males and females aged 16-64. These denominators will be updated annually with the ONS mid-year population estimates.

Data back to December 2014 were revised by DWP on 18th October 2017. This bulletin contains these revisions and therefore supersedes any previously released data.

Introduction of Universal Credit

Since 2013 the roll out of Universal Credit has progressed across across the UK. Universal Credit will replace a number of means-tested benefits including the means-tested element of Jobseeker's Allowance (JSA).

From April 2015 Universal Credit started to be rolled out within Kent. It is now available in all Jobcentre areas in Kent & Medway however it is only available to single claimants without a partner and without child dependents. Full roll out of Universal Credit to all claimant types began in 2017. The following table shows the planned roll out within Kent districts

Date of roll out	Job Centre Plus Office	District Served
May-17	Dover	Dover
Jul-17	Margate	Thanet
Jul-17	Ramsgate	Thanet
Dec-17	Sheerness	Swale
Dec-17	Sittingbourne	Swale
Feb-18	Gravesend	Gravesham
Feb-18	Gravesend	Sevenoaks (part)
Feb-18	Folkestone	Folkestone & Hythe
Feb-18	Chatham	Medway
Mar-18	Ashford	Ashford
Apr-18	Canterbury	Canterbury
Apr-18	Hernebay	Canterbury
Apr-18	Whitstable	Canterbury
May-18	Dartford	Dartford
May-18	Dartford	Sevenoaks (part)
Aug-18	Maidstone	Maidstone
Aug-18	Tonbridge	Tonbridge & Malling
Aug-18	Tonbridge	Tunbridge Wells

For more information on Universal Credit: <https://www.gov.uk/universal-credit>

Produced by:
 Research & Evaluation,
 Strategic Business Development & Intelligence,
 Kent County Council

Tel: 03000 417444

