



Kent County Council

Historic Landscape Characterisation

Figures

April 2001

Kent Historic Landscape Characterisation

Final Report

Volume 3: Illustrations

Authors

Andrew Croft
Julian Munby
Matthew Ridley

Kent County Council

English Heritage

Oxford Archaeological Unit
May 2001

Table of Contents

Volume 3 - Illustrations

Figure 1.1	Geological Map of Kent (from Campbell 1962,491)
Figure 1.2	Relief Map of Kent (from Campbell 1962,490)
Figure 3.1	Historic Landscape Character Areas
Figure 3.2	Proportions and Percentages of Main HLTs for Kent
Figures 3.3 to 3.19	Proportions of Main HLTs for the HLCAs
Figure 4.1	Assarts
Figure 4.2	Fields Bounded by Tracks
Figure 4.3	Wavy Bounded Fields with Ponds
Figure 4.4	Regular Fields
Figure 4.5	Wavy Bounded Fields and Irregular Straight Bounded Fields
Figure 4.6	Woodland
Figure 4.7	Downland, Commons and Rough Ground
Figure 4.8	Horticulture
Figure 4.9	Coastal and River Valleys
Figure 4.10	Reclaimed Marsh
Figure 4.11	Settlement, Parkland and Recreation
Figure 4.12	Industry, Inland Communication and Military and Defence
Figure 5.1	Parish Boundaries in Relation to Historic Landscape Types
Figure 5.2	Parish Boundaries in Relation to Historic Landscape Character Areas
Figure 5.3	Parish Boundaries in Relation to Settlements
Figure 6.1	Historic Landscape Time Depth to Early Post-Medieval
Figure 6.2	Historic Landscape Time Depth to Early 19th-Century
Figure 6.3	Historic Landscape Time Depth to Late 19th-Century

Volume 1 - Main Report Text

Chapter 1	Introduction
Chapter 2	Approach and Methodology
Chapter 3	Description of the Historic Landscape Character Areas of Kent
Chapter 4	Commentary on the Historic Landscape Types of Kent
Chapter 5	Comments on Settlement Patterns and Landscape Character
Chapter 6	Time-depth and Landscape Change

Volume 2 - Historic Landscape Type Descriptions

Text Descriptions
Map Extracts

Volume 3 - Illustrations

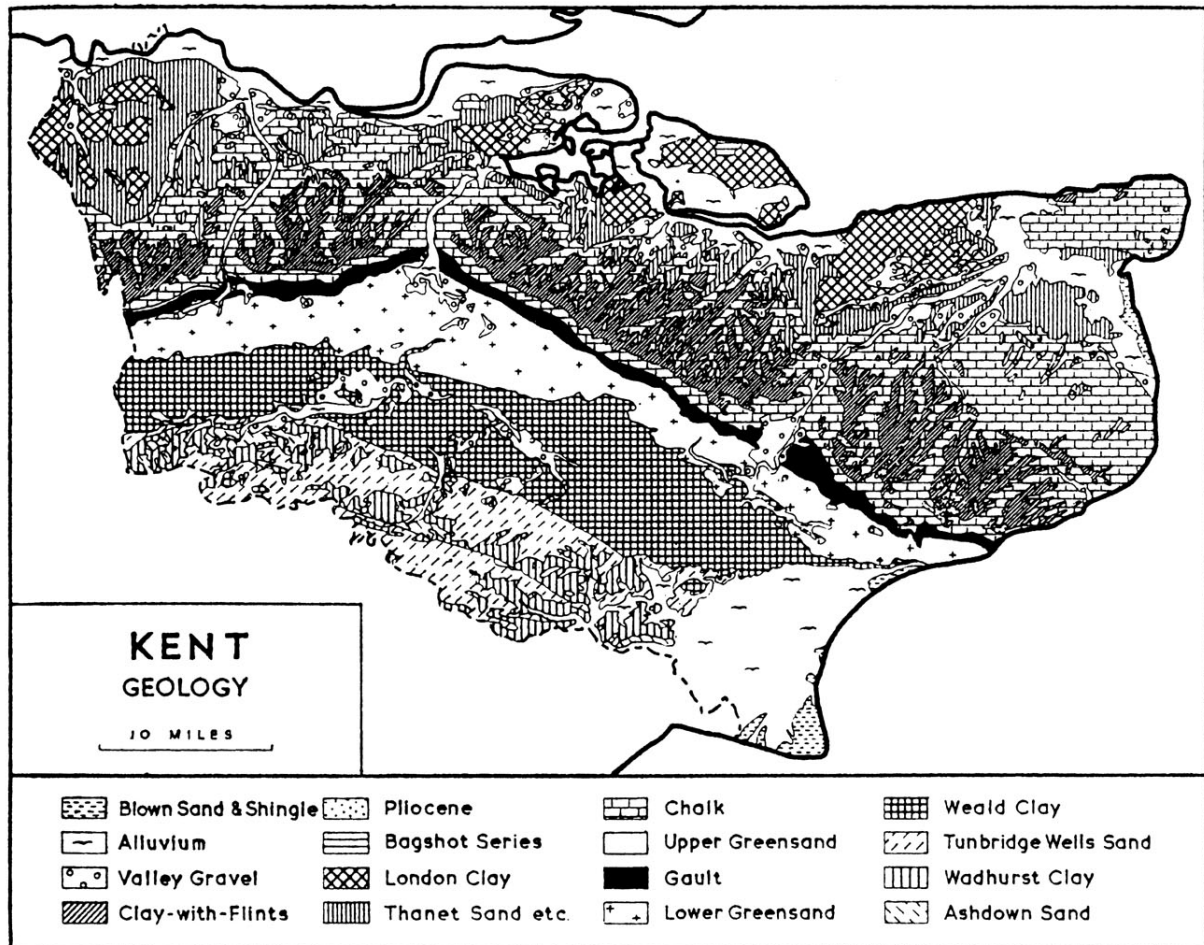


Figure 1.1: Geological map of Kent (from Campbell 1971, 491)

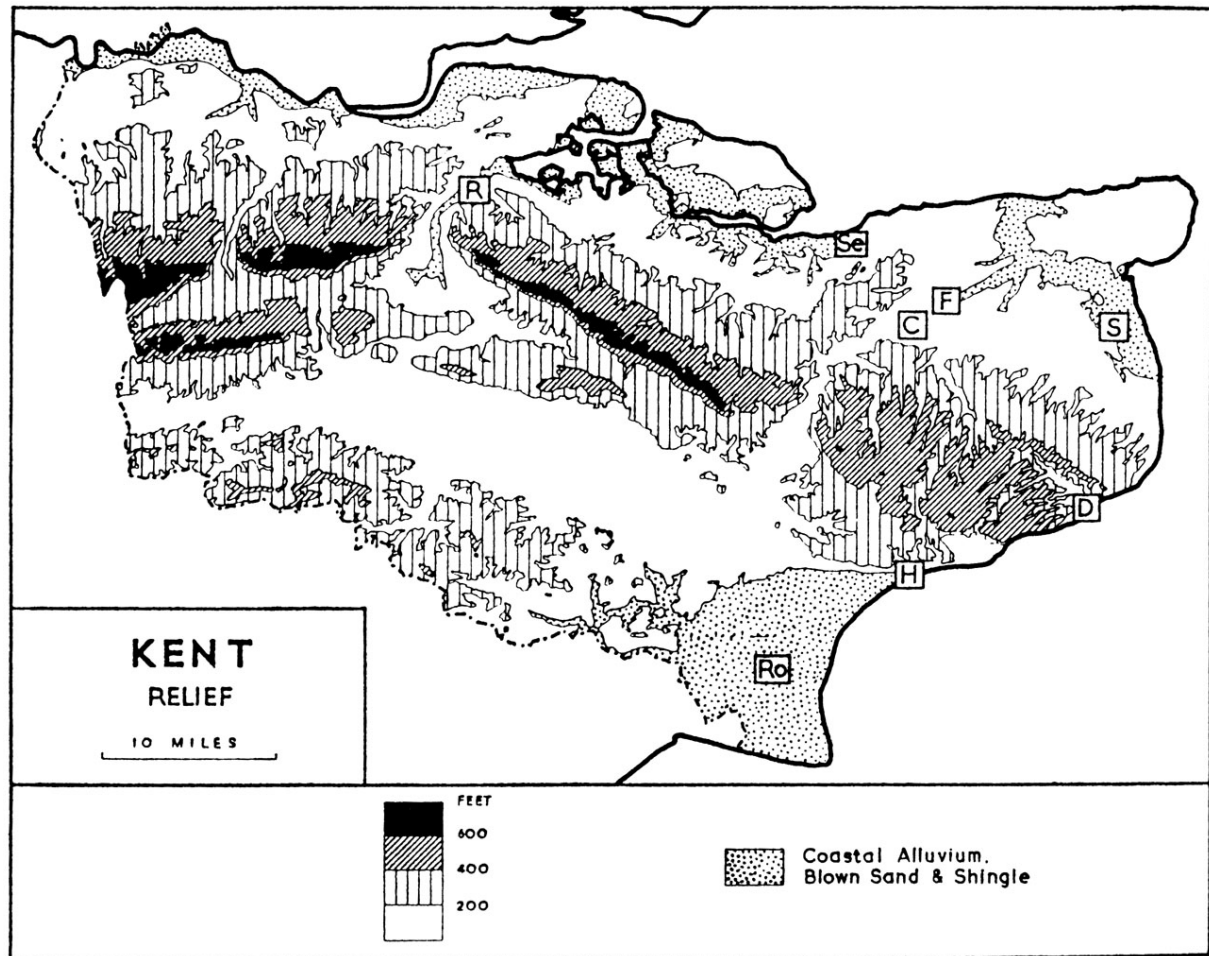


Figure 1.2: Relief map of Kent (from Campbell 1971, 490)

Domesday Boroughs are indicated by initials:

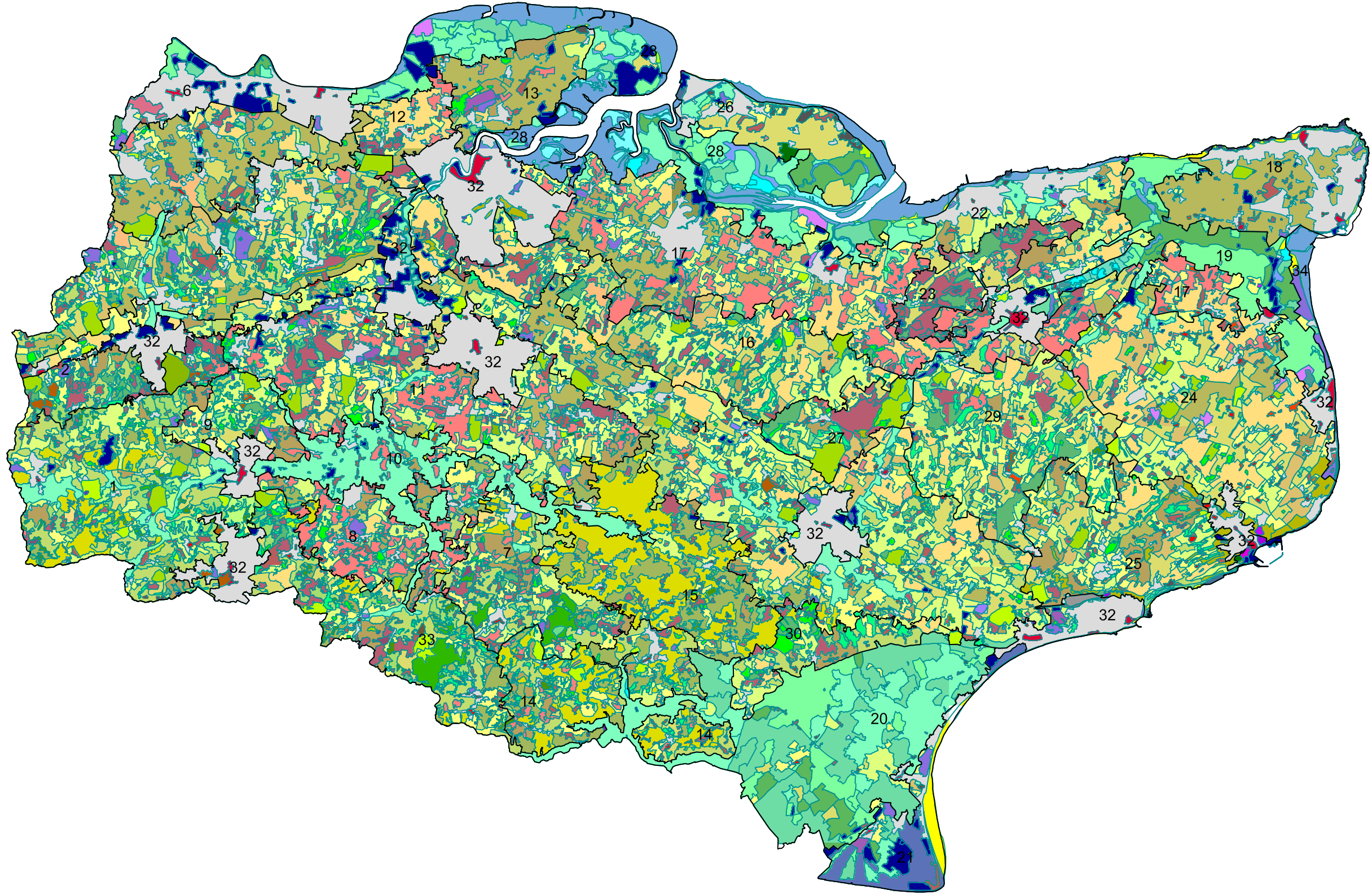
- C, Canterbury
- D, Dover
- F, Fordwich
- H, Hythe
- R, Rochester
- Ro, Romney
- S, Sandwich
- Se, Seasalter

Figure 3.1

Historic Landscape
Character Areas

Historic Landscape
Character Areas

- 1 Western Weald
- 2 Western Greensand
- 3 Western Gault Band
- 4 Western North Downs
- 5 North Western Foothills
- 6 Dartford and Gravesham Conurbation
- 7 Central Low Weald
- 8 Wealden Horticultural Pocket
- 9 Low Wealden Pocket
- 10 Medway Basin
- 11 Greensand Horticultural Belt
- 12 Rochester / Chatham Hinterland
- 13 Hoo Peninsula
- 14 Southern High Weald
- 15 The Marling Weald
- 16 Central North Downs
- 17 Northern Horticultural Belt
- 18 Isle of Thanet
- 19 Wantsum Channel
- 20 Romney Marsh
- 21 Eastern Coastal Belt
- 22 Former Blean Forest
- 23 Forest of Blean
- 24 North Chalk Downs
- 25 Eastern Clay-with-Flints North Downs
- 26 Isle of Sheppey
- 27 Stour Valley Parkland
- 28 Northern Coast and Marshland
- 29 Clay-with-Flints North Downs
- 30 Weald-Romney Border Area
- 31 Central Valley Area
- 32 Urban Conurbation
- 33 Central High Weald
- 34 Wantsum Coastal Belt



- FIELD PATTERNS**
- 1.1 Small Assarts
 - 1.2 Medium Assarts
 - 1.3 Large Assarts
 - 1.4 Regular Assarts
 - 1.6 Large Wavy Boundaries
 - 1.7 Irregular Straight Boundaries
 - 1.8 Regular Ladder Fields
 - 1.9 Small Regular
 - 1.10 Medium Regular
 - 1.11 Large Regular
 - 1.12 Graded Regular
 - 1.13 Prairie Fields
 - 1.14 Fields Bounded by Tracks
 - 1.15 Small Wavy Boundaries
 - 1.16 Small Wavy Bounded Fields with Ponds
 - 1.17 Large Wavy Bounded Fields with Ponds

- COMMONS**
- 2.1 Common Heathland
 - 2.2 Downland Common
 - 2.3 Other Commons & Greens
 - 2.4 Wooded Over Commons
 - 2.5 Rough Ground
- HORTICULTURE**
- 3.1 Orchards
 - 3.3 Nurseries with Glasshouses
 - 3.5 Vineyards
 - 3.6 Platt
- WOODLAND**
- 4.1 Assarted Pre-1801
 - 4.2 Replanted Assarted Pre-1801
 - 4.3 Other Pre-1801

- 4.4 Other Replanted Pre-1801
 - 4.5 Post-1801 Plantations
 - 4.6 Pre-1801 Wooded Scarps & Gills
 - 4.7 Post-1801 Wooded Scarps & Gills
 - 4.8 Post-1801 Coppice
 - 4.9 Pre-1801 Coppice
 - 4.10 Pre-1801 Wood Pasture
 - 4.11 Post-1801 Wood Pasture
- RECLAIMED MARSH**
- 5.1 Small Irregular Enclosures
 - 5.2 Irregular Enclosures
 - 5.3 Small Regular Enclosures
 - 5.4 Regular Enclosures

- DOWNLAND**
- 6.1 Downland
- VALLEY FLOOR AND WATER MANAGEMENT**
- 7.1 Miscellaneous Valley Floor
 - 7.2 Valley Floor Woodlands
 - 7.3 Marsh & Rough Grazing
 - 7.6 Watercress Beds
 - 7.7 Fisheries, Natural Ponds and Lakes
 - 7.8 Mills, Mill Ponds and Leats

- COASTAL**
- 8.1 Coastal Wetlands
 - 8.2 Salt Marsh
 - 8.3 Saltmarsh
 - 8.4 Reclaimed Land
 - 8.5 Harbours & Marinas
 - 8.6 Shingle & Dunes
 - 8.7 Mudflats
 - 8.8 Wave-cut Platforms
 - 8.9 Dunes
 - 8.10 Creeks & Fleets

- SETTLEMENTS**
- 9.1 Pre-1801 Scattered Settlement
 - 9.2 Post-1801 Scattered Settlement
 - 9.3 Pre-1801 Common Edge Settlement
 - 9.4 Post-1801 Common Edge Settlement
 - 9.6 Post-1801 Settlement
 - 9.7 Village / Hamlet 1801 Extent
 - 9.9 Town & City 1801 Extent
 - 9.11 Caravan Sites and Holiday Chalets
 - 9.12 Prisons

- PARKLAND AND DESIGNED LANDSCAPE**
- 10.1 Pre-1801 Parkland
 - 10.2 Post-1801 Parkland
 - 10.3 Deer Parks

- RECREATION**
- 11.1 Racecourses
 - 11.2 Golf Courses
 - 11.3 Sports Fields
- EXTRACTIVE AND OTHER INDUSTRY**
- 12.1 Chalk and Ragstone Quarries
 - 12.2 Gravel and Clay Workings
 - 12.3 Factories
 - 12.4 Large Scale Industry
 - 12.5 Water Treatment
 - 12.6 Dockyards
 - 12.7 Abandoned Industry

- INLAND COMMUNICATION FACILITIES**
- 13.1 Stations & Sidings
 - 13.2 Airfields
 - 13.3 Motorway Services
- MILITARY AND DEFENCE**
- 14.1 Prehistoric & Roman
 - 14.2 Medieval
 - 14.3 Post Medieval (1500-1830)
 - 14.4 19th Century (1830-1914)
 - 14.5 20th Century (1914-)

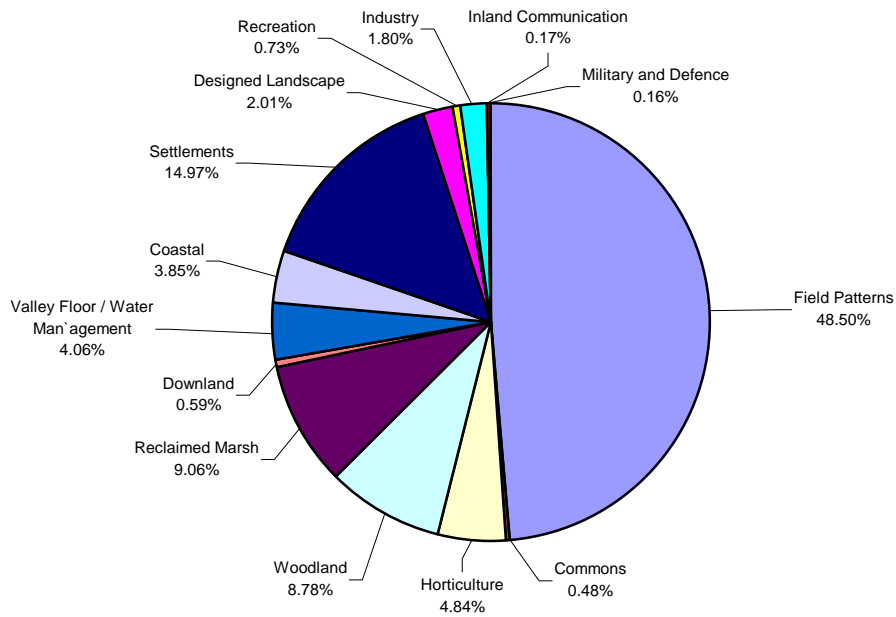
Historic Landscape Types

OXFORD
ARCHAEOLOGICAL
UNIT
Janus House, Osney Mead,
Oxford, OX2 0ES



Tel: 01865 263800 Fax: 01865 793496
email : postmaster@oau-oxford.com
www.oau-oxford.com

**Kent Historic Landscape
Percentages of Main Historic Landscape Types**



**Kent Historic Landscape
Proportions of Grouped Historic Landscape Types**

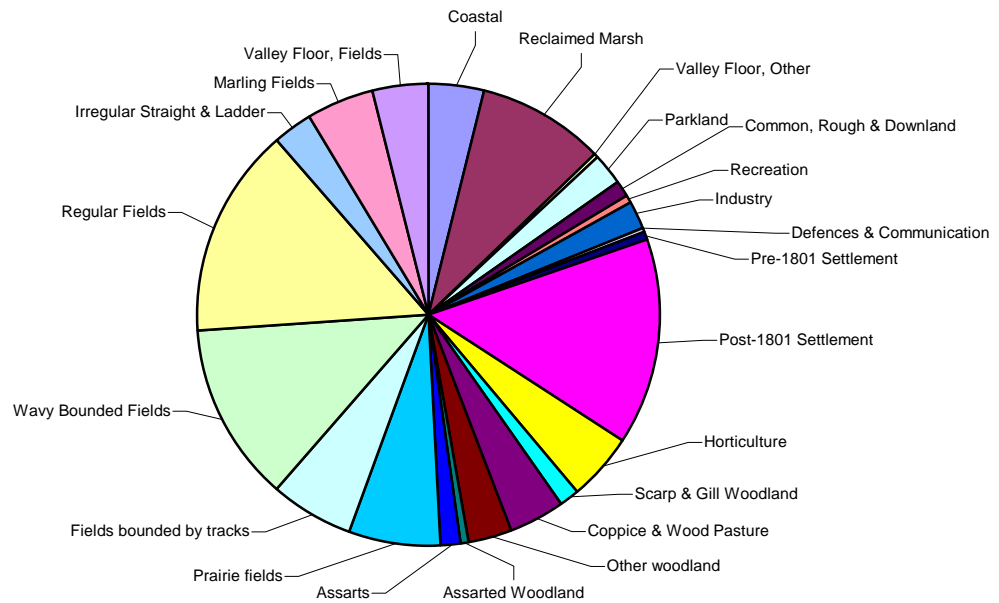
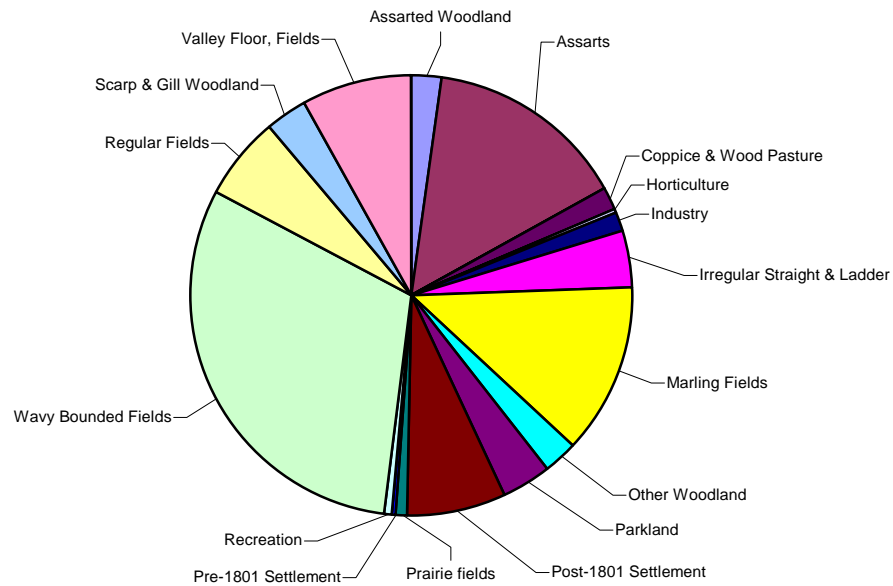


Figure 3.2

**Kent Historic Landscape Character Area 1
Western Weald
Proportions of Grouped Historic Landscape Types**



**Kent Historic Landscape Character Area 2
Western Greensand
Proportions of Grouped Historic Landscape Types**

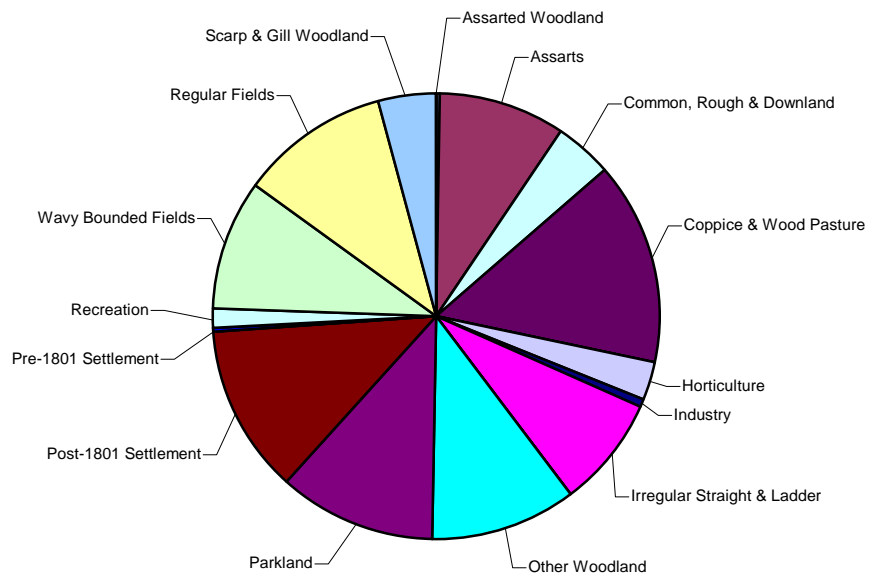
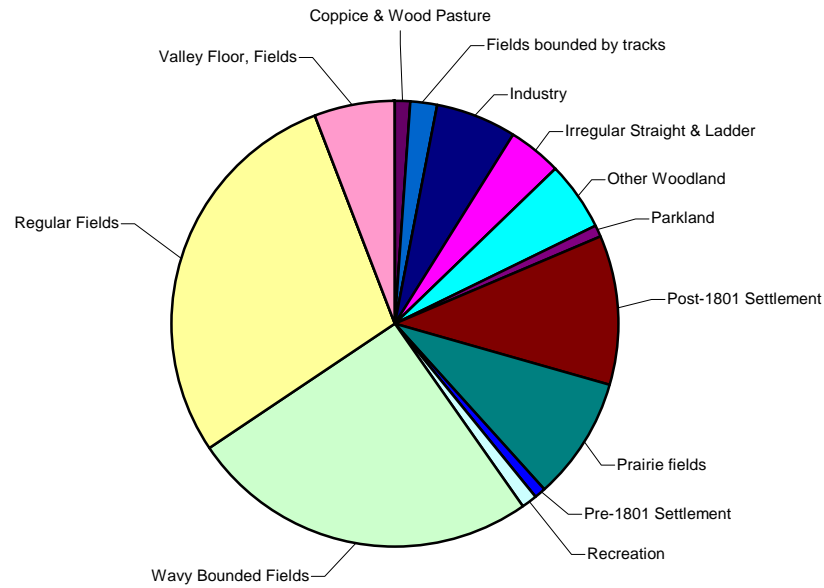


Figure 3.3

**Kent Historic Landscape Character Area 3
Western Gault Band
Proportions of Grouped Historic Landscape Types**



**Kent Historic Landscape Character Area 4
Western North Downs
Proportions of Grouped Historic Landscape Types**

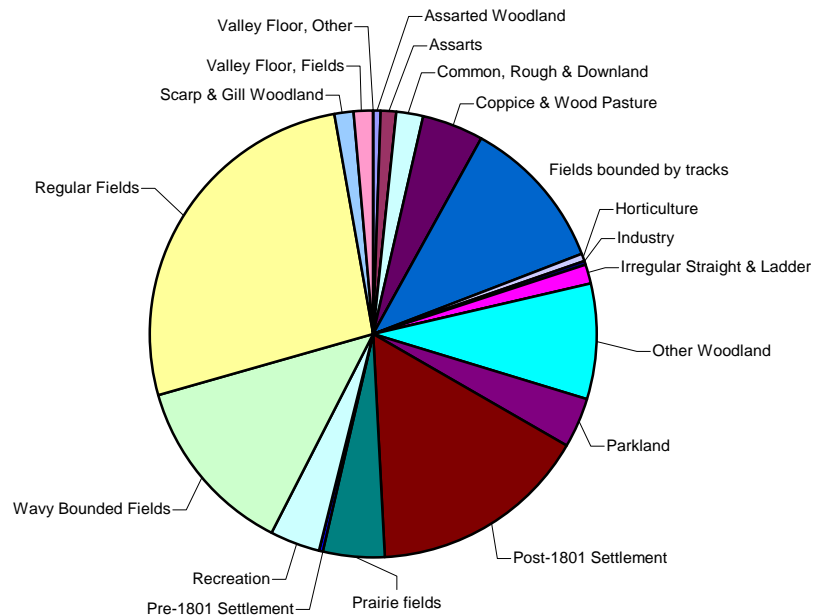
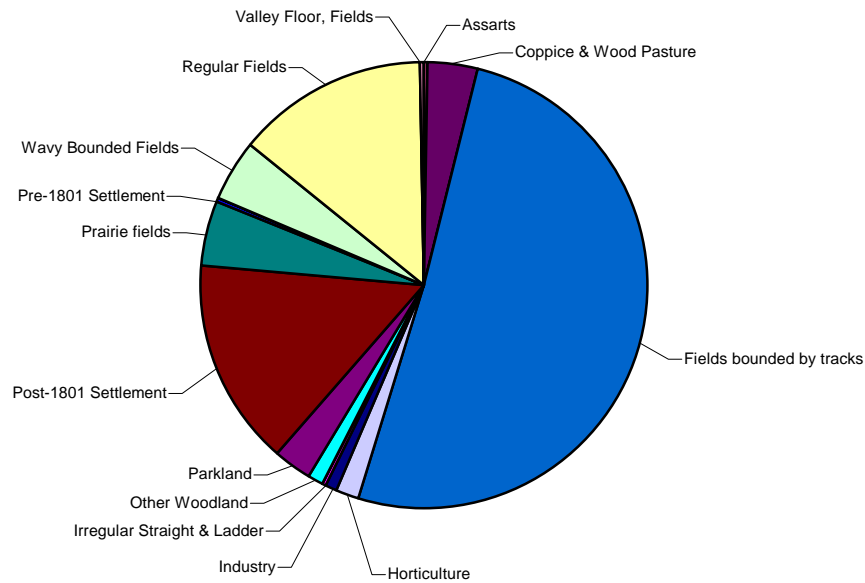


Figure 3.4

**Kent Historic Landscape Character Area 5
North Western Foothills
Proportions of Grouped Historic Landscape Types**



**Kent Historic Landscape Character Area 6
Dartford and Gravesham Conurbation
Proportions of Grouped Historic Landscape Types**

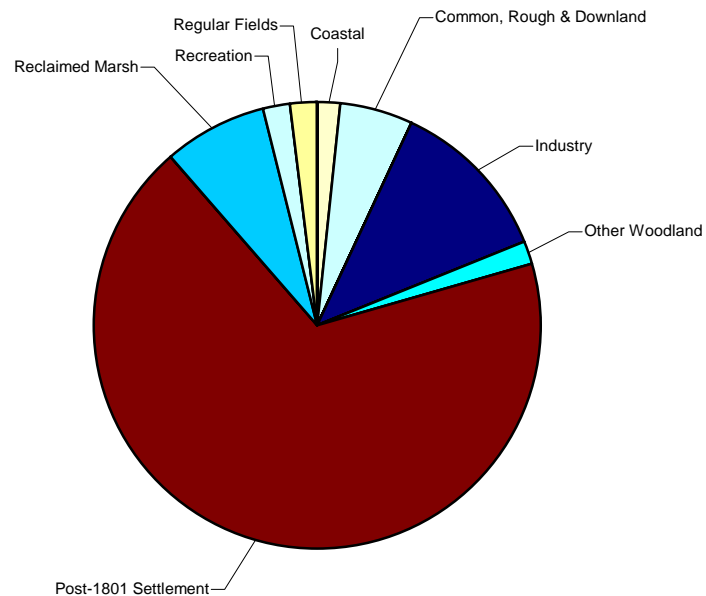


Figure 3.5