

## 2011 Census: Parish population

### Related documents



The [Population and Census](#) web page contains more information which you may find useful.

- [Area profiles](#)
- [Kent Geography](#)
- [The Office for National Statistics](#)

### Further information

#### Business Intelligence Research & Evaluation

Kent County Council  
Sessions House  
Maidstone  
Kent  
ME14 1XQ

Email:  
[research@kent.gov.uk](mailto:research@kent.gov.uk)

Tel: 03000 417444

This bulletin presents the 2011 Census total population for parishes in Kent as published by the Office for National Statistics (ONS) on 30 January 2013. Change in population since the 2001 Census is also presented. Data is also provided for the Non Civil Parished areas and the Kent local authority districts and Medway Unitary authority.

### Summary of findings

- There are currently 320 parishes in the county of Kent. 309 parishes are in the Kent County Council (KCC) area and 11 parishes are within the Medway Unitary authority area.
- In 2011 the average population of a parish in the KCC area was 2,962 people. Folkestone parish in Shepway has the largest population with 46,698 people whilst Leaveland parish in Swale has the smallest population with 100 people.
- Between 2001 and 2011 Kingsnorth parish in Ashford saw the highest growth in population in real terms with an increase of +4,534 people. This is equal to an increase of +67.6%. However Boughton Aluph parish in Ashford saw the highest percentage increase in population with +126.6% which equates to an extra 1,391 people.
- The most densely populated parish in the KCC area is Stanhope in Ashford where there are 71.09 persons per hectare. Old Romney parish in Shepway is the smallest density with 0.09 persons per hectare.

---

## Introduction

A parish (also known as a 'civil parish'), is the smallest unit of local government in England. Parishes were once significant local government areas but now have very limited functions. Modern parish councils (which may choose to call themselves a town council) can provide facilities such as village halls, war memorials, cemeteries, leisure facilities and playgrounds. They have duties concerning maintenance of public footpaths and may also spend money on cultural projects, community transport initiatives and crime prevention equipment. In addition they must be notified of all planning applications and consulted on the making of certain byelaws.

However, not all parishes have a council - if there are fewer than 200 parishioners, or if the parishioners do not want one, decisions can instead be taken at parish meetings. Also, several smaller parishes may come together to elect a joint council.

There is a long history of parishes in England but parishes as we know them today were first established in 1894. At that time parish councils were elected mainly in rural areas although a small number of urban parishes continued to exist (left over from the days when they were originally developed as ecclesiastical parishes by the Church of England). However, the Local Government Act of 1972 retained civil parishes in rural areas and small urban areas but abolished them in larger urban areas. Urban areas were considered too large to be a single parish and therefore became un-parished.

Twenty-five years on, and the Local Government and Rating Act 1997 created a procedure which gave local residents the right to demand that new parish councils be created in un-parished areas. Whilst 6 new parish councils have since been established in Kent's urban areas between 2001 and 2011 there are still several areas which remain un-parished.

Although parishes are affected by the boundary changes of the county districts or unitary authorities in which they fall, they are not contiguous with electoral wards. Many parishes are a similar size to wards, some are much smaller than wards and some can contain several wards, and ward boundaries need not be followed.

In consequence, the huge range in population size between parishes; the frequent change to the number of parishes and the fact that some areas of the country have parishes and others not make them an unsatisfactory unit for national statistical production on an annual basis. However, the national census does provide data at parish level.

## 2011 Census Parishes and Non Civil Parished areas in Kent

There are currently 320 parishes in the county of Kent. 309 parishes are in the KCC area and 11 parishes are within the Medway Unitary authority area. Dover, Sevenoaks and Shepway are the only KCC local authority areas to have no un-parished areas.

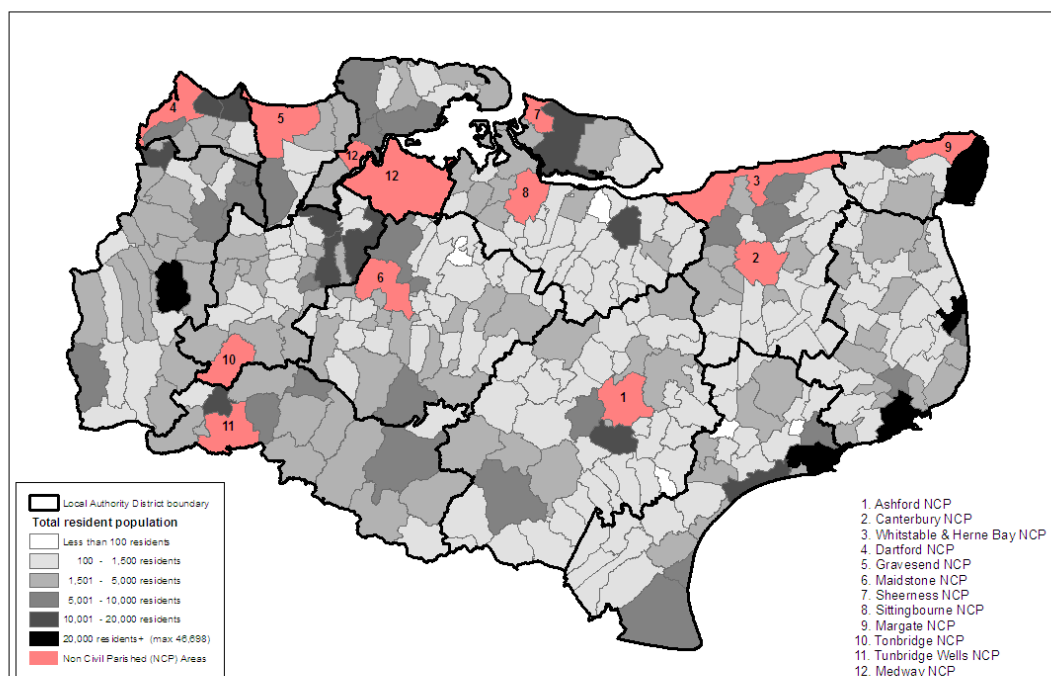
In 2011 the average population of a parish in the KCC area was 2,962 people. Folkestone parish in Shepway has the largest population with 46,698 people Leaveland parish in Swale is credited with having the smallest population with 100 people. However, there are five parishes in the KCC area with population of less than 100 people.

The ONS operate a Disclosure Control Policy which is designed to protect against any possible identification of an individual through the publication of any data. This means that any information for a parish with a population of less than 100 people will not be published. Instead the information of the smaller parish will be merged with a neighbouring parish.

Further details of the five combined parishes in the KCC area are available in the individual local authority districts tables on pages 5 to 15.

Map 1 presents the 2011 Census parish population and location of non-civil parished areas in the KCC area and Medway.

Map 1: 2011 Census: Total resident population in parishes in Kent and Medway

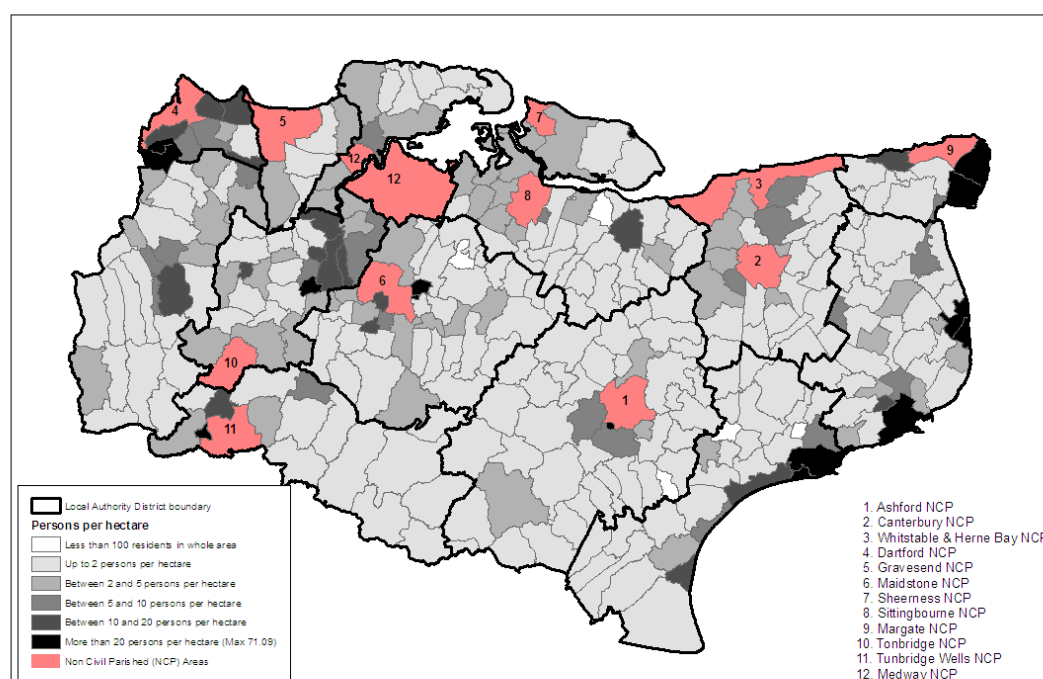


Source 2011 Census Key Statistics table KS101: Office for National Statistics (ONS) © Crown Copyright  
Data presented by Business Intelligence: Research & Evaluation, Kent County Council © Crown Copyright and database right 2013, Ordnance Survey 100019238



Map 2 presents the 2011 Census parish population in the KCC area and Medway.

Map 2: 2011 Census: Population density in parishes in Kent and Medway



Source 2011 Census Key Statistics table KS101: Office for National Statistics (ONS) © Crown Copyright  
Data presented by Business Intelligence: Research & Evaluation, Kent County Council © Crown Copyright and database right 2013, Ordnance Survey 100019238



In 2011 there were 900,336 people living in parishes across the KCC area. This accounts for 61.5% of the total population. The remaining 563,404 people (38.5%) of the population were living in un-parished areas.

In Medway Unitary Authority 32,909 people live in parishes. This accounts for 12.5% of the total population. The remaining 231,016 people (87.5%) of the population were living in un-parished areas. See tables 1 and 2 for details.

**Table 1: Distribution of population within parishes and non parished areas in Kent**

	2001		2011		2001-11 Change	
	Population	% of Kent	Population	% of Kent	number	%
Total Parish Population	733,561	55.2%	900,336	61.5%	166,775	22.7%
Total Non Parished Population	596,157	44.8%	563,404	38.5%	-32,753	-5.5%
<b>Kent County Council Area</b>	<b>1,329,718</b>		<b>1,463,740</b>		<b>134,022</b>	<b>10.1%</b>

Source: 2001 Census Table KS001 and 2011 Census Table KS101, The Office for national Statistics (ONS) © Crown Copyright  
Presented by Business Intelligence: Research & Evaluation, Kent County Council

**Table 2: Distribution of population within parishes and non parished areas in Medway**

	2001		2011		2001-11 Change	
	Population	% of Kent	Population	% of Kent	number	%
Total Parish Population	30,057	12.0%	32,909	12.5%	2,852	9.5%
Total Non Parished Population	219,431	88.0%	231,016	87.5%	11,585	5.3%
<b>Medway Unitary Authority</b>	<b>249,488</b>		<b>263,925</b>		<b>14,437</b>	<b>5.8%</b>

Source: 2001 Census Table KS001 and 2011 Census Table KS101, The Office for national Statistics (ONS) © Crown Copyright  
Presented by Business Intelligence: Research & Evaluation, Kent County Council

## 2001 to 2011 change

In the KCC area there were 6 new parishes created between the 2001 Census and the 2011 Census. These are:

- Thanet - Cliffsend parish in 2003 and Ramsgate parish in 2004
- Shepway - Folkestone parish in 2004 and Sandgate parish in 2004
- Sevenoaks - Hextable parish in 2008
- Tunbridge Wells - Rusthall parish in 2011.

All of these new parishes were once part of the urban non-parished areas and this explains the marked increase in parish population of 22.7% between 2001 and 2011, and the -5.5% decrease in non parished population.

The total number of parishes in each of the local authority areas in 2001 and 2011 is presented in table 3

**Table 3: Change in number of Kent parishes between 2001 and 2011**

	Number of parishes		
	2001	2011	2001-11 Change
<b>KCC Total</b>	<b>303</b>	<b>309</b>	<b>6</b>
Ashford	42	42	0
Canterbury	26	26	0
Dartford	8	8	0
Dover	35	35	0
Gravesham	6	6	0
Maidstone	41	41	0
Sevenoaks	29	30	1
Shepway	28	30	2
Swale	38	38	0
Thanet	8	10	2
Tonbridge & Malling	27	27	0
Tunbridge Wells	15	16	1
<b>Medway Unitary Authority</b>	<b>11</b>	<b>11</b>	<b>0</b>

Business Intelligence, Research & Evaluation, Kent County Council

Individual tables for each local authority are presented on pages 5 to 15. Each table presents the total population for 2001 and 2011, the population change and percentage change, the area and density for each parish and non parished area.

More detailed information about the characteristics of the population at parish level is available in the 2011 Census Summary Profile on the [area profiles](#) page on the Kent County Council website.

## 2011 Census Parish level population

Ashford Borough Council	2001	2011	2001-11 Change		Area	2011 density
			number	%		
<b>Total Population</b>	<b>80,154</b>	<b>91,058</b>	<b>10,904</b>	<b>13.6%</b>	<b>58,061</b>	<b>1.57</b>
<b>Total population of civil parishes</b>	<b>35,056</b>	<b>40,302</b>	<b>5,246</b>	<b>15.0%</b>	<b>55,793</b>	<b>0.72</b>
Aldington*	981	1,248	267	27.2%	1,822	0.68
Appledore	754	749	-5	-0.7%	1,246	0.60
Bethersden	1,443	1,481	38	2.6%	2,610	0.57
Biddenden	2,434	2,574	140	5.8%	2,912	0.88
Bilsington	274	284	10	3.6%	1,112	0.26
Bonnington (supressed and included in Aldington parish)	109	0	0	0.0%	0	0.00
Boughton Aluph	1,099	2,490	1,391	126.6%	993	2.51
Brabourne	1,442	1,309	-133	-9.2%	1,476	0.89
Brook	307	310	3	1.0%	401	0.77
Challock	843	920	77	9.1%	1,407	0.65
Charing	2,694	2,766	72	2.7%	2,489	1.11
Chilham	1,595	1,634	39	2.4%	1,786	0.91
Crundale	168	186	18	10.7%	639	0.29
Eastwell	119	103	-16	-13.4%	362	0.28
Egerton	1,104	1,073	-31	-2.8%	1,238	0.87
Godmersham	366	376	10	2.7%	1,570	0.24
Singleton	4,206	6,801	2,595	61.7%	1,331	5.11
Hastingleigh	226	230	4	1.8%	633	0.36
High Halden	1,463	1,584	121	8.3%	1,518	1.04
Hothfield	880	780	-100	-11.4%	959	0.81
Kenardington	210	247	37	17.6%	747	0.33
Kingsnorth	6,709	11,243	4,534	67.6%	1,246	9.03
Little Chart	239	234	-5	-2.1%	601	0.39
Mersham	1,058	1,124	66	6.2%	1,385	0.81
Molash	249	246	-3	-1.2%	638	0.39
Newenden	193	223	30	15.5%	423	0.53
Orlestone	1,281	1,407	126	9.8%	792	1.78
Pluckley	1,050	1,069	19	1.8%	1,262	0.85
Rolvenden	1,495	1,414	-81	-5.4%	2,328	0.61
Ruckinge	727	711	-16	-2.2%	1,391	0.51
Sevington	318	310	-8	-2.5%	76	4.08
Shadoxhurst	1,135	1,216	81	7.1%	803	1.51
Smarden	1,222	1,301	79	6.5%	2,180	0.60
Smeeth	846	924	78	9.2%	829	1.11
Stanhope	3,833	4,068	235	6.1%	57	71.09
Stone-cum-Ebony	392	460	68	17.3%	1,918	0.24
Tenterden	7,613	7,735	122	1.6%	3,619	2.14
Warehorne	374	370	-4	-1.1%	1,066	0.35
Westwell	740	703	-37	-5.0%	1,257	0.56
Wittersham	1,143	1,112	-31	-2.7%	1,466	0.76
Woodchurch	1,824	1,903	79	4.3%	2,795	0.68
Hinxhill	2,405	2,282	-123	-5.1%	2,411	0.95
<b>Ashford Non Civil Parished Area</b>	<b>45,098</b>	<b>50,756</b>	<b>5,658</b>	<b>12.5%</b>	<b>2,268</b>	<b>22.38</b>

Source: 2001 Census Table KS001 and 2011 Census Table KS101, The Office for national Statistics (ONS) © Crown Copyright

Presented by Business Intelligence: Research & Evaluation, Kent County Council

Note: Area = square Hectares, Density = persons per Hectare

In 2011 the population of the Parish of Bonnington fell below the minimum population threshold of 100. The information for this parish has been merged with the neighbouring parish of Aldington.

## 2011 Census Parish level population

Canterbury City Council	2001	2011	2001-11 Change		Area	2011 density
			number	%		
<b>Total Population</b>	<b>135,278</b>	<b>151,145</b>	<b>15,867</b>	<b>11.73%</b>	<b>26,766</b>	<b>5.65</b>
<b>Total population of civil parishes</b>	<b>39,106</b>	<b>45,992</b>	<b>6,886</b>	<b>17.61%</b>	<b>24,768</b>	<b>1.86</b>
Adisham	620	645	25	4.03%	1,182	0.55
Barham	1,187	1,355	168	14.15%	1,454	0.93
Bekesbourne-with-Patrixbourne	868	925	57	6.57%	847	1.09
Bishopsbourne	235	257	22	9.36%	918	0.28
Bridge	1,467	1,576	109	7.43%	408	3.86
Chartham	3,351	4,261	910	27.16%	2,083	2.05
Chestfield	2,915	3,214	299	10.26%	794	4.05
Chislet	868	872	4	0.46%	1,825	0.48
Fordwich	351	381	30	8.55%	181	2.11
Hackington	522	587	65	12.45%	592	0.99
Harbledown and Rough Common	2,137	2,174	37	1.73%	755	2.88
Hoath	533	551	18	3.38%	651	0.85
Ickham and Well	417	437	20	4.80%	930	0.47
Kingston	444	471	27	6.08%	511	0.92
Littlebourne	1,454	1,529	75	5.16%	852	1.79
Lower Hardres	557	570	13	2.33%	914	0.62
Petham	673	708	35	5.20%	1,361	0.52
St. Cosmus and St. Damian in the Blean	2,300	5,589	3,289	143.00%	1,368	4.08
Sturry	6,257	6,820	563	9.00%	1,341	5.09
Thanington Without	2,656	2,662	6	0.23%	480	5.55
Upper Hardres	389	385	-4	-1.03%	811	0.47
Waltham	427	436	9	2.11%	1,186	0.37
Westbere	368	376	8	2.17%	352	1.07
Wickhambreaux	471	485	14	2.97%	1,131	0.43
Womenswold	300	286	-14	-4.67%	744	0.38
Herne and Broomfield	7,339	8,440	1,101	15.00%	1,097	7.70
<b>Total Non Civil Parished Area</b>	<b>96,172</b>	<b>105,153</b>	<b>8,981</b>	<b>9.34%</b>	<b>1,997</b>	<b>52.64</b>
Canterbury NCP		45,351	45,351		811	55.92
Whitstable & Herne Bay NCP		59,802	59,802		1,186	50.40

In 2011 the total non civil parished area for Canterbury has been separately identified as Canterbury and Whitstable & Herne Bay

Source: 2001 Census Table KS001 and 2011 Census Table KS101, The Office for national Statistics (ONS) © Crown Copyright

Presented by Business Intelligence: Research & Evaluation, Kent County Council

Note: Area = square Hectares, Density = persons per Hectare

In 2001 the population for Non Civil parished area for Canterbury was presented as one figure. In 2011 the information was available for the two separate areas of Canterbury and Whitstable and Herne Bay.

### 2011 Census Parish level population

	2001	2011	2001-11 Change		Area	2011 density
			number	%		
<b>Dartford Borough Council</b>						
<b>Total Population</b>	<b>85,911</b>	<b>97,365</b>	<b>11,454</b>	<b>13.33%</b>	<b>7,277</b>	<b>13.38</b>
<b>Total population of civil parishes</b>	<b>43,111</b>	<b>49,054</b>	<b>5,943</b>	<b>13.79%</b>	<b>5,418</b>	<b>76</b>
Bean	1,709	1,643	-66	-3.86%	338	4.87
Darenth	4,779	4,851	72	1.51%	904	5.37
Longfield and New Barn	4,866	4,919	53	1.09%	357	13.79
Southfleet	1,302	1,327	25	1.92%	915	1.45
Stone	8,824	10,778	1,954	22.14%	611	17.63
Sutton-at-Hone and Hawley	4,133	4,230	97	2.35%	754	5.61
Swanscombe and Greenhithe	10,620	14,128	3,508	33.03%	864	16.36
Wilmington	6,878	7,178	300	4.36%	677	10.61
<b>Dartford Non Civil Parished area</b>	<b>42,800</b>	<b>48,311</b>	<b>5,511</b>	<b>12.88%</b>	<b>1,859</b>	<b>25.99</b>

Source: 2001 Census Table KS001 and 2011 Census Table KS101, The Office for national Statistics (ONS) © Crown Copyright

Presented by Business Intelligence: Research & Evaluation, Kent County Council

Note: Area = square Hectares, Density = persons per Hectare

### 2011 Census Parish level population

	2001	2011	2001-11 Change		Area	2011 density
			number	%		
<b>Gravesham Borough Council</b>						
<b>Total Population</b>	<b>95,717</b>	<b>101,720</b>	<b>6,003</b>	<b>6.27%</b>	<b>9,902</b>	<b>10.27</b>
<b>Total population of civil parishes</b>	<b>16,705</b>	<b>16,925</b>	<b>220</b>	<b>1.32%</b>	<b>6,844</b>	<b>2.47</b>
Cobham	1,456	1,469	13	0.89%	1,301	1.13
Higham	3,938	3,962	24	0.61%	1,322	3.00
Luddesdown	198	220	22	11.11%	810	0.27
Meopham	6,427	6,722	295	4.59%	2,022	3.33
Shorne	2,485	2,487	2	0.08%	1,321	1.88
Vigo	2,201	2,065	-136	-6.18%	69	30.08
<b>Gravesend Non Civil Parished area</b>	<b>79,012</b>	<b>84,795</b>	<b>5,783</b>	<b>7.32%</b>	<b>3,058</b>	<b>27.73</b>

Source: 2001 Census Table KS001 and 2011 Census Table KS101, The Office for national Statistics (ONS) © Crown Copyright

Presented by Business Intelligence: Research & Evaluation, Kent County Council

Note: Area = square Hectares, Density = persons per Hectare



## 2011 Census Parish level population

Dover District Council	2001	2011	2001-11 Change		Area	2011 density
			number	%		
<b>Total population of civil parishes</b>	<b>104,566</b>	<b>111,674</b>	<b>7,108</b>	<b>6.80%</b>	<b>31,485</b>	<b>3.55</b>
Alkham	691	688	-3	-0.43%	1,301	0.53
Ash	2,767	3,365	598	21.61%	2,837	1.19
Aylesham	3,884	3,999	115	2.96%	539	7.42
Capel-le-Ferne	1,659	1,884	225	13.56%	598	3.15
Denton with Wooton	317	372	55	17.35%	1,368	0.27
Eastry	2,168	2,492	324	14.94%	1,080	2.31
Eythorne	2,493	2,594	101	4.05%	735	3.53
Goodnestone	363	378	15	4.13%	1,070	0.35
Guston	1,882	1,740	-142	-7.55%	541	3.22
Hougham Without	481	463	-18	-3.74%	845	0.55
Langdon	558	558	0	0.00%	791	0.71
Lydden	684	673	-11	-1.61%	693	0.97
Nonington	847	906	59	6.97%	1,013	0.89
Northbourne	793	772	-21	-2.65%	1,175	0.66
Preston	713	674	-39	-5.47%	823	0.82
Ringwould with Kingsdown	1,964	2,030	66	3.36%	638	3.18
Ripple	351	372	21	5.98%	520	0.72
River	3,775	3,876	101	2.68%	254	15.28
St. Margaret's at Cliffe	2,378	2,499	121	5.09%	1,303	1.92
Sandwich	4,753	4,985	232	4.88%	859	5.80
Shepherdswell with Coldred	1,761	1,849	88	5.00%	1,357	1.36
Sholden	985	1,084	99	10.05%	735	1.48
Staple	521	551	30	5.76%	462	1.19
Stourmouth	262	268	6	2.29%	362	0.74
Sutton	777	772	-5	-0.64%	1,374	0.56
Temple Ewell	1,696	1,669	-27	-1.59%	455	3.67
Tilmanstone	365	401	36	9.86%	792	0.51
Whitfield	4,442	5,142	700	15.76%	698	7.37
Wingham	1,618	1,775	157	9.70%	1,018	1.74
Woodnesborough	997	1,066	69	6.92%	1,029	1.04
Worth	935	992	57	6.10%	1,630	0.61
Deal	20,355	20,823	468	2.30%	627	33.18
Dover	28,156	31,022	2,866	10.18%	1,408	22.04
Great Mongeham	747	762	15	2.01%	216	3.53
Walmer	7,428	8,178	750	10.10%	340	24.06

Source: 2001 Census Table KS001 and 2011 Census Table KS101, The Office for national Statistics (ONS) © Crown Copyright

Presented by Business Intelligence: Research & Evaluation, Kent County Council

Note: Area = square Hectares, Density = persons per Hectare

## 2011 Census Parish level population

Maidstone Borough Council	2001	2011	2001-11 Change		Area	2011 density
			number	%		
<b>Total Population</b>	<b>138,948</b>	<b>155,143</b>	<b>16,195</b>	<b>11.66%</b>	<b>39,334</b>	<b>3.94</b>
<b>Total population of civil parishes</b>	<b>70,358</b>	<b>74,703</b>	<b>4,345</b>	<b>6.18%</b>	<b>37,105</b>	<b>2.01</b>
Barming	1,654	1,690	36	2.18%	364	4.64
Bearsted	8,010	8,209	199	2.48%	280	29.35
Bicknor/Hucking*	132	176	44	33.33%	742	0.24
Boughton Malherbe	428	476	48	11.21%	1,108	0.43
Boughton Monchelsea	2,041	3,313	1,272	62.32%	1,097	3.02
Boxley	9,616	9,554	-62	-0.64%	2,220	4.30
Bredhurst	355	397	42	11.83%	229	1.73
Broomfield and Kingswood	1,545	1,604	59	3.82%	586	2.74
Chart Sutton	822	870	48	5.84%	885	0.98
Coxheath	3,856	4,082	226	5.86%	232	17.58
Detling	777	796	19	2.45%	624	1.27
Downswood	2,225	2,291	66	2.97%	37	62.00
East Farleigh	1,394	1,500	106	7.60%	560	2.68
East Sutton	284	402	118	41.55%	645	0.62
Frinstead	171	143	-28	-16.37%	853	0.17
Harrietsham	1,750	2,113	363	20.74%	1,026	2.06
Headcorn	3,241	3,387	146	4.50%	2,125	1.59
Hollingbourne	858	949	91	10.61%	1,779	0.53
Hunton	613	702	89	14.52%	800	0.88
Langley	1,128	1,187	59	5.23%	394	3.01
Leeds	679	790	111	16.35%	669	1.18
Lenham	3,301	3,370	69	2.09%	2,349	1.43
Linton	536	555	19	3.54%	744	0.75
Loose	2,207	2,277	70	3.17%	268	8.49
Marden	3,771	3,724	-47	-1.25%	2,747	1.36
Nettlestead	839	870	31	3.69%	528	1.65
Otham	527	523	-4	-0.76%	338	1.55
Otterden	161	162	1	0.62%	615	0.26
Staplehurst	6,003	5,947	-56	-0.93%	2,385	2.49
Stockbury	683	691	8	1.17%	1,281	0.54
Sutton valence	1,574	1,665	91	5.78%	859	1.94
Teston	579	637	58	10.02%	210	3.03
Thurnham	1,085	1,207	122	11.24%	1,284	0.94
Tovil	2,977	3,542	565	18.98%	249	14.20
Ulcombe	862	890	28	3.25%	1,424	0.63
West Farleigh	464	474	10	2.16%	449	1.06
Wichling	128	123	-5	-3.91%	560	0.22
Wormshill	198	201	3	1.52%	684	0.29
Yalding	2,236	2,418	182	8.14%	1,598	1.51
Collier Street	648	796	148	22.84%	1,273	0.63
<b>Maidstone Non Civil Parished Area</b>	<b>68,590</b>	<b>80,440</b>	<b>11,850</b>	<b>17.28%</b>	<b>2,229</b>	<b>36.09</b>

\* Bicknor and Hucking parish have been combined as the population of each parish is below 100 persons

Source: 2001 Census Table KS001 and 2011 Census Table KS101, The Office for national Statistics (ONS) © Crown Copyright

Presented by Business Intelligence: Research & Evaluation, Kent County Council

Note: Area = square Hectares, Density = persons per Hectare

## 2011 Census Parish level population

Sevenoaks District Council	2001	2011	2001-11 Change		Area	2011 density
			number	%		
<b>Total population of civil parishes</b>	<b>109,305</b>	<b>114,893</b>	<b>5,588</b>	<b>5.11%</b>	<b>36,920</b>	<b>3.11</b>
Ash-cum-Ridley	7,070	6,641	-429	-6.07%	1,424	4.66
Brasted	1,321	1,429	108	8.18%	1,454	0.98
Chevening	2,762	3,092	330	11.95%	1,559	1.98
Chiddingstone	1,127	1,250	123	10.91%	2,465	0.51
Cowden	765	818	53	6.93%	1,261	0.65
Crockenhill	1,603	1,654	51	3.18%	705	2.35
Dunton Green	2,007	2,360	353	17.59%	390	6.05
Edenbridge	7,808	8,907	1,099	14.08%	2,202	4.04
Eynsford	1,744	1,814	70	4.01%	1,454	1.25
Farningham	1,289	1,319	30	2.33%	965	1.37
Fawkham	539	578	39	7.24%	664	0.87
Halstead	1,494	1,607	113	7.56%	589	2.73
Hartley	5,395	5,359	-36	-0.67%	554	9.68
Hever	1,136	1,231	95	8.36%	1,481	0.83
Horton Kirby and South Darent	2,942	3,492	550	18.69%	1,053	3.32
Kemsing	4,014	4,218	204	5.08%	894	4.72
Knockholt	1,166	1,222	56	4.80%	744	1.64
Leigh	1,689	1,793	104	6.16%	1,619	1.11
Otford	3,258	3,465	207	6.35%	688	5.03
Penshurst	1,479	1,628	149	10.07%	1,618	1.01
Riverhead	2,342	2,634	292	12.47%	286	9.22
Seal	2,491	2,556	65	2.61%	1,862	1.37
Sevenoaks	18,588	20,409	1,821	9.80%	1,596	12.79
Sevenoaks Weald	1,153	1,222	69	5.98%	897	1.36
Shoreham	1,979	2,041	62	3.13%	2,026	1.01
Sundridge with Ide Hill	1,837	1,877	40	2.18%	1,675	1.12
Swanley	20,986	16,226	-4,760	-22.68%	715	22.71
Westerham	4,078	4,475	397	9.74%	2,287	1.96
West Kingsdown	5,243	5,484	241	4.60%	1,597	3.43
Hextable		4,092			198	20.67

The Parish of Hextable was created in 2011 from part of Swanley

Source: 2001 Census Table KS001 and 2011 Census Table KS101, The Office for national Statistics (ONS) © Crown Copyright

Presented by Business Intelligence: Research & Evaluation, Kent County Council

Note: Area = square Hectares, Density = persons per Hectare

The Parish of Hextable came into existence in 2008. It was previously part of the parish of Swanley .

## 2011 Census Parish level population

Shepway District Council	2001	2011	2001-11 Change		Area	2011 density
			number	%		
<b>Total population of civil parishes</b>	<b>96,238</b>	<b>107,969</b>	<b>11,731</b>	<b>12.19%</b>	<b>35,670</b>	<b>3.03</b>
Acrise	176	172	-4	-2.27%	543	0.32
Brenzett	377	379	2	0.53%	1,091	0.35
Brookland	453	479	26	5.74%	972	0.49
Burmarsh	358	330	-28	-7.82%	1,724	0.19
Dymchurch	3,605	3,725	120	3.33%	580	6.42
Elham	1,465	1,509	44	3.00%	2,552	0.59
Elmsted	292	319	27	9.25%	1,044	0.31
Hawkinge/Paddlesworth*	4,443	8,002	3,559	80.10%	1,123	7.13
Hythe	14,170	14,516	346	2.44%	1,227	11.83
Iychurch	245	253	8	3.27%	1,926	0.13
Lydd	5,782	6,567	785	13.58%	4,824	1.36
Lyminge	2,688	2,717	29	1.08%	1,632	1.67
Lympne	1,516	1,575	59	3.89%	1,060	1.49
Newchurch	314	315	1	0.32%	1,580	0.20
Newington	341	368	27	7.92%	958	0.38
New Romney	6,953	6,996	43	0.62%	641	10.91
Old Romney	206	215	9	4.37%	2,326	0.09
Postling	179	206	27	15.08%	633	0.33
St.Mary in the Marsh	2,797	2,819	22	0.79%	1,396	2.02
Saltwood	852	850	-2	-0.23%	935	0.91
Sellindge	1,356	1,601	245	18.07%	724	2.21
Snargate	112	134	22	19.64%	1,227	0.11
Stanford	428	429	1	0.23%	481	0.89
Stelling Minnis	562	578	16	2.85%	873	0.66
Stowting/Monks Horton*	333	351	18	5.41%	1,096	0.32
Swingfield	1,171	1,227	56	4.78%	888	1.38
*Folkestone	40,839	46,698	5,859	14.35%	1,409	33.13
*Sandgate	4,225	4,639	414	9.80%	207	22.39

Source: 2001 Census Table KS001 and 2011 Census Table KS101, The Office for national Statistics (ONS) © Crown Copyright

Presented by Business Intelligence: Research & Evaluation, Kent County Council

Note: Area = square Hectares, Density = persons per Hectare

The population of the Parish of Monks Horton and the Parish of Paddlesworth is below the minimum population threshold of 100. The information for Monks Horton parish has been merged with the neighbouring parish of Stowting. The information for Paddlesworth parish has been merged with the neighbouring parish of Hawkinge.

The Parish of Folkestone and the Parish of Sandgate came into existence in 2004. The 2001 Census data was released to these new parish areas therefore the population between 2001 and 2011 is comparable. Both of these areas were previously part of the Shepway non-Civil Parished area. The creation of these new parishes means that Shepway no longer has any non-parished areas.

## 2011 Census Parish level population

Swale Borough Council	2001	2011	2001-11 Change		Area	2011 density
			number	%		
<b>Total Population</b>	<b>177,479</b>	<b>256,989</b>	<b>79,510</b>	<b>44.80%</b>	<b>42,423</b>	<b>6.06</b>
<b>Total population of civil parishes</b>	<b>122,801</b>	<b>196,412</b>	<b>73,611</b>	<b>59.94%</b>	<b>39,881</b>	<b>4.93</b>
Badlesmere	111	134	23	20.72%	392	0.34
Bapchild	1,068	1,141	73	6.84%	137	8.31
Bobbing	1,694	1,969	275	16.23%	622	3.17
Borden	2,154	2,432	278	12.91%	719	3.38
Boughton under Blean	1,865	1,917	52	2.79%	773	2.48
Bredgar	622	659	37	5.95%	876	0.75
Doddington	557	527	-30	-5.39%	881	0.60
Dunkirk	1,119	1,187	68	6.08%	1,337	0.89
Eastchurch	2,718	3,022	304	11.18%	2,317	1.30
Eastling	369	365	-4	-1.08%	846	0.43
Faversham	17,710	19,316	1,606	9.07%	1,116	17.31
Graveny with Goodnestone	472	490	18	3.81%	1,273	0.38
Hartlip	769	743	-26	-3.38%	580	1.28
Hernhill	637	692	55	8.63%	1,060	0.65
Iwade	1,142	3,087	1,945	170.32%	1,309	2.36
Leaveland	112	100	-12	-10.71%	154	0.65
Leysdown	1,245	1,256	11	0.88%	2,074	0.61
Lower Halstow	1,215	1,180	-35	-2.88%	522	2.26
Lynstead with Kingsdown	973	1,094	121	12.44%	716	1.53
Milstead	261	283	22	8.43%	852	0.33
Newington	2,489	2,551	62	2.49%	749	3.40
Newnham	354	386	32	9.04%	429	0.90
Norton, Buckland and Stone/Luddenham*	444	467	23	5.18%	1,464	0.32
Oare	512	513	1	0.20%	463	1.11
Ospringe	715	771	56	7.83%	1,042	0.74
Queenborough	3,471	3,407	-64	-1.84%	721	4.73
Rodmersham	563	555	-8	-1.42%	566	0.98
Selling	701	849	148	21.11%	1,060	0.80
Sheldwich	522	491	-31	-5.94%	890	0.55
Stalisfield	208	205	-3	-1.44%	947	0.22
Teynham	2,904	2,913	9	0.31%	921	3.16
Throwley	282	300	18	6.38%	1,315	0.23
Tonge	292	336	44	15.07%	937	0.36
Tunstall	877	884	7	0.80%	412	2.14
Upchurch	2,398	2,484	86	3.59%	1,190	2.09
Warden	1,806	1,763	-43	-2.38%	81	21.72
Minster-on-Sea	12,772	14,789	2,017	15.79%	3,053	4.84
<b>Total Non Civil Parished Area</b>	<b>54,678</b>	<b>60,577</b>	<b>5,899</b>	<b>10.79%</b>	<b>2,542</b>	<b>23.83</b>
Sheerness NCP		16,054	16,054		841	19.09
Sittingbourne NCP		44,523	44,523		1,701	26.17

In 2011 the total non civil parished area for Swale has been separately identified as Sheerness and Sittingbourne

Source: 2001 Census Table KS001 and 2011 Census Table KS101, The Office for national Statistics (ONS) © Crown Copyright

Presented by Business Intelligence: Research & Evaluation, Kent County Council

Note: Area = square Hectares, Density = persons per Hectare

The population of the Parish of Luddenham is below the minimum population threshold of 100. The information for this parish has been merged with the neighbouring parish of Norton, Buckland and Stone.

## 2011 Census Parish level population

Thanet District Council	2001	2011	2001-11 Change		Area	2011 density
			number	%		
<b>Total Population</b>	<b>126,702</b>	<b>134,186</b>	<b>7,484</b>	<b>5.91%</b>	<b>10,333</b>	<b>12.99</b>
<b>Total population of civil parishes</b>	<b>39,763</b>	<b>83,832</b>	<b>44,069</b>	<b>110.83%</b>	<b>8,910</b>	<b>9.41</b>
Acol	308	295	-13	-4.22%	215	1.37
Birchington	9,827	9,961	134	1.36%	733	13.58
Broadstairs and St.Peters	24,370	24,903	533	2.19%	1,136	21.93
Manston	410	1,138	728	177.56%	995	1.14
Minster	3,267	3,569	302	9.24%	1,954	1.83
Monkton	669	661	-8	-1.20%	959	0.69
St. Nicholas at Wade	782	853	71	9.08%	1,434	0.59
Sarre	130	222	92	70.77%	271	0.82
Cliffsend		1,822	1,822		224	8.13
Ramsgate		40,408	40,408		987	40.93
<b>Margate Non Civil Parished Area - 2011</b>		<b>50,354</b>			<b>1,423</b>	<b>35.39</b>
<b>Thanet Non Civil Parished Area - 2001</b>	<b>86,939</b>				<b>3,293</b>	

The Parishes of Cliffsend and Ramsgate were created in 2011 from part of the non civil parished area in Thanet.

The remaining Non Civil Parished area is now known as Margate Non Civil Parish

Source: 2001 Census Table KS001 and 2011 Census Table KS101, The Office for national Statistics (ONS) © Crown Copyright

Presented by Business Intelligence: Research & Evaluation, Kent County Council

Note: Area = square Hectares, Density = persons per Hectare

The Parish of Cliffsend came into existence in 2003 and the Parish of Ramsgate came into existence in 2004. Both of these areas were previously part of the Thanet non-Civil Parished area. The remainder of this un-parished area is known as Margate Non Civil Parished area.

We are unable to provide an accurate 2001 to 2011 population change for these newly created areas.

## 2011 Census Parish level population

Tonbridge & Malling Borough Council	2001	2011	2001-11 Change		Area	2011 density
			number	%		
<b>Total Population</b>	<b>107,561</b>	<b>120,805</b>	<b>13,244</b>	<b>12.31%</b>	<b>24,014</b>	<b>5.03</b>
<b>Total population of civil parishes</b>	<b>75,399</b>	<b>86,111</b>	<b>10,712</b>	<b>14.21%</b>	<b>22,113</b>	<b>3.89</b>
Addington	733	769	36	4.91%	335	2.30
Aylesford	10,190	10,660	470	4.61%	1,759	6.06
Birling	430	437	7	1.63%	680	0.64
Borough Green	3,472	3,672	200	5.76%	217	16.90
Burham	1,251	1,195	-56	-4.48%	588	2.03
Ditton	4,753	4,786	33	0.69%	426	11.24
East Malling and Larkfield	12,027	14,185	2,158	17.94%	1,088	13.03
East peckham	3,140	3,306	166	5.29%	1,289	2.57
Hadlow	3,908	3,983	75	1.92%	1,919	2.08
Hildenborough	4,588	4,954	366	7.98%	1,700	2.91
Ightham	1,940	2,084	144	7.42%	924	2.25
Kingshill	2,638	7,435	4,797	181.84%	324	22.94
Leybourne	3,235	3,218	-17	-0.53%	272	11.81
Mereworth	1,111	1,068	-43	-3.87%	973	1.10
Offham	732	755	23	3.14%	805	0.94
Platt	1,420	1,679	259	18.24%	696	2.41
Plaxtol	969	1,117	148	15.27%	971	1.15
Ryarsh	617	696	79	12.80%	381	1.83
Shipbourne	456	470	14	3.07%	900	0.52
Snodland	9,329	10,211	882	9.45%	880	11.60
Stansted	473	484	11	2.33%	799	0.61
Trottscliffe	490	485	-5	-1.02%	554	0.88
Wateringbury	2,015	2,104	89	4.42%	540	3.90
West Malling	2,383	2,590	207	8.69%	383	6.77
West Peckham	327	350	23	7.03%	635	0.55
Wouldham	957	1,497	540	56.43%	698	2.14
Wrotham	1,815	1,921	106	5.84%	1,376	1.40
<b>Tonbridge &amp; Malling Non Civil Parished Area</b>	<b>32,162</b>	<b>34,694</b>	<b>2,532</b>	<b>7.87%</b>	<b>1,901</b>	<b>18.25</b>

Source: 2001 Census Table KS001 and 2011 Census Table KS101, The Office for national Statistics (ONS) © Crown Copyright

Presented by Business Intelligence: Research & Evaluation, Kent County Council

Note: Area = square Hectares, Density = persons per Hectare

## 2011 Census Parish level population

Tunbridge Wells Borough Council	2001	2011	2001-11 Change		Area	2011 density
			number	%		
<b>Total Population</b>	<b>104,030</b>	<b>115,049</b>	<b>11,019</b>	<b>10.59%</b>	<b>33,133</b>	<b>3.47</b>
<b>Total population of civil parishes</b>	<b>58,388</b>	<b>66,725</b>	<b>8,337</b>	<b>14.28%</b>	<b>30,882</b>	<b>2.16</b>
Benenden	2,230	2,374	144	6.46%	2,710	0.88
Bidborough	958	1,163	205	21.40%	818	1.42
Brenchley	2,715	2,863	148	5.45%	2,189	1.31
Capel	2,312	2,467	155	6.70%	2,115	1.17
Cranbrook	6,603	6,717	114	1.73%	4,195	1.60
Frittenden	867	888	21	2.42%	1,421	0.62
Goudhurst	3,204	3,327	123	3.84%	3,892	0.85
Hawkhurst	4,360	4,911	551	12.64%	2,633	1.86
Horsmonden	2,169	2,435	266	12.26%	2,008	1.21
Lamberhurst	1,491	1,706	215	14.42%	2,166	0.79
Paddock Wood	8,263	8,253	-10	-0.12%	983	8.40
Pembury	6,005	6,128	123	2.05%	1,434	4.27
Sandhurst	1,328	1,478	150	11.30%	1,789	0.83
Southborough	11,124	12,061	937	8.42%	733	16.46
Speldhurst	4,759	4,978	219	4.60%	1,623	3.07
Rusthall		4,976	4,976		172	29.00
<b>Tunbridge Wells Non Civil Parished Area</b>	<b>45,642</b>	<b>48,324</b>	<b>2,682</b>	<b>5.88%</b>	<b>2,251</b>	<b>21.47</b>

The Parish of Rusthall was created in 2011 from part of Tunbridge Wells Non Parished Area as at 2001

Source: 2001 Census Table KS001 and 2011 Census Table KS101, The Office for national Statistics (ONS) © Crown Copyright

Presented by Business Intelligence: Research & Evaluation, Kent County Council

Note: Area = square Hectares, Density = persons per Hectare

## 2011 Census Parish level population

Medway Unitary Authority	2001	2011	2001-11 Change		Area	2011 density
			number	%		
<b>Total Population</b>	<b>249,488</b>	<b>263,925</b>	<b>14,437</b>	<b>5.8%</b>	<b>19,203</b>	<b>13.74</b>
<b>Total population of civil parishes</b>	<b>30,057</b>	<b>32,909</b>	<b>2,852</b>	<b>9.5%</b>	<b>12,524</b>	<b>2.63</b>
Allhallows	1,649	1,676	27	1.6%	930	1.80
Cliffe and Cliffe Woods	5,361	5,370	9	0.2%	2,243	2.39
Cooling	209	216	7	3.3%	838	0.26
Cuxton	2,570	2,627	57	2.2%	766	3.43
Frindsbury Extra	5,395	6,501	1,106	20.5%	834	7.79
Halling	2,698	2,821	123	4.6%	748	3.77
High Halstow	1,781	1,807	26	1.5%	1,190	1.52
Hoo St. Werburgh	7,356	8,945	1,589	21.6%	1,905	4.70
Isle of Grain	1,731	1,648	-83	-4.8%	1,250	1.32
St. Mary Hoo	244	238	-6	-2.5%	914	0.26
Stoke	1,063	1,060	-3	-0.3%	906	1.17
<b>Medway Non Civil Parished Area</b>	<b>219,431</b>	<b>231,016</b>	<b>11,585</b>	<b>5.3%</b>	<b>6,679</b>	<b>34.59</b>

Source: 2001 Census Table KS001 and 2011 Census Table KS101, The Office for national Statistics (ONS) © Crown Copyright

Presented by Business Intelligence: Research & Evaluation, Kent County Council

Note: Area = square Hectares, Density = persons per Hectare