

How the Kent Joint Municipal Waste Management Strategy has been developed

Annex 2

Prepared by Kent Waste Partnership

January 2007

CONTENTS

1	INTRODUCTION	3
2	HOW THE STRATEGY WAS DEVELOPED	4
2.1	WHO WAS INVOLVED IN DEVELOPING THE STRATEGY?	4
2.2	STAGES IN STRATEGY DEVELOPMENT	4
3	OFFICER ENGAGEMENT	5
3.1	OFFICER WORKSHOPS	5
3.2	WHO WAS INVOLVED?	5
3.3	MEETING DETAILS	5
4	MEMBER ENGAGEMENT	6
4.1	KENT WASTE FORUM MEETINGS	6
4.1.1	WHO WAS INVOLVED?	6
4.1.2	MEETING DETAILS	6-7
4.2	MEMBER BRIEFINGS	7
4.2.1	MEETING DETAILS	7
5	COMMUNITY ENGAGEMENT	8
5.1	KENT WASTE OPEN FORUM MEETINGS	8
5.2	WHO WAS INVOLVED?	8
5.3	MEETING DETAILS	8-11
6	WIDER COMMUNITY ENGAGEMENT	12
6.1	COMMUNITY DISCUSSION GUIDE	12
6.2	COMMUNITY GROUP MEETINGS	12
6.2.1	MEETING DETAILS	12
7	STRATEGY PUBLICITY	13
7.1	PUBLIC CONSULTATION DOCUMENTS	13
7.2	CONSULTATION ARTICLES	14
7.3	KENT COUNTY COUNCIL WEBSITE	14
7.4	MEDIA COVERAGE	14
7.5	RESPONSE METHODS	15
8	SUSTAINABILITY APPRAISAL	16

1. INTRODUCTION

This annex summarises the way in which the Kent Waste Local Authorities have prepared their Joint Municipal Waste Management Strategy (the Strategy). It contains information on:

- Who was Involved in Developing the Strategy;
- Officer Engagement;
- Member Engagement;
- Community Sector Engagement;
- Wider Community Engagement;
- Strategy Publicity;
- Sustainability Appraisal.

2. HOW WAS THE STRATEGY DEVELOPED?

2.1 WHO WAS INVOLVED IN DEVELOPING THE STRATEGY?

Kent's Joint Municipal Waste Management Strategy (JMWMS) has been developed through the Kent Waste Forum (KWF) over a number of phases from September 2005 through to November 2006.

The Kent Waste Forum comprises of elected members from each of the twelve District and Borough Councils in Kent, the County Council, the Association of Parish Councils, the Environment Agency and ReMaDe Kent and Medway. Representatives from Medway Unitary Authority also attend, and input into Strategy development. The KWF meets roughly three times a year to discuss current and future issues. Support in developing the Strategy was provided by Environmental Resources Management Ltd (ERM) funded by Department for Environment, Food and Rural Affairs (Defra).

The JMWMS strategy has been developed in parallel to the Waste Development Framework (WDF), which focuses on the planning and site procurement aspect of waste management in Kent. The WDF consultation ran concurrently with the JMWMS consultation, with many participants commenting on both.

2.2 STAGES IN STRATEGY DEVELOPMENT

The key stages of the Strategy development are illustrated below:

Figure 1 – The Strategy Process



Annex A provides a detailed timeline of the Strategy progression.

3. OFFICER ENGAGEMENT

3.1 OFFICER WORKSHOPS

From August 2005 until April 2006 a series of officer workshops involving representatives from each of the twelve Districts, Boroughs and KCC were run by ERM to develop the draft Strategy. These workshops ensured that all authorities were in agreement and involved when developing the policies. The workshops provided each Authority the time and opportunity to offer their detailed views.

3.2 WHO WAS INVOLVED?

There were a number of workshops covering each topic. At least one officer from each of the District and Borough Councils and KCC attended a workshop on each theme.

3.3 MEETING DETAILS

- Four 'Visioning' workshops were held on 30th August 2005, 9th September 2005, 12th September 2005 and 15th September 2005.

As a result of these workshops a set of objectives and important principles were developed. These objectives and principles provided a draft vision for how waste should be managed in Kent in the future.

- Three 'Waste Minimisation and Recycling and Composting' workshops were held on 7th November 2005, 10th November 2005 and 11th November 2005.

The waste growth rate and strategic recycling options, including kerbside collections, were discussed at these meetings.

- Three 'Residual Waste' workshops were held on 21st November 2005, 22nd November 2005 and 23rd November 2005.

This workshop focused on the residual waste technology options available to increase capacity and recovery in Kent.

- Four 'Finding the Way Forward' workshops were held on 19th April 2006, 21st April 2006 and 28th April 2006.

The overall objective of these meetings was to develop the Headline Strategy and the policies within it.

4. MEMBER ENGAGEMENT

4.1 KENT WASTE FORUM

The existing Kent Waste Forum (KWF) steered the process of Strategy development and were used as a vehicle to engage members' views as representatives of the people of Kent. The meetings involved the presentation of key Strategy information with the opportunity for further discussion.

4.1.1 Who was Involved?

Invitees to the KWF meetings included: elected Members and officers from each of the Kent District and Borough councils and Kent County Council and community representatives such as Kent Association of Parish Councils, Medway Council, ReMaDe Kent and Medway and The Environment Agency.

4.1.2 Meeting Details

Six KWF meetings were held at specific stages of Strategy development.

- 13th October 2005, East Malling Research Centre.
Introduction to the Strategy and presentation by ERM consultancy. The Working objectives of the Strategy were agreed.
- 13th December 2005, University of Greenwich Conference Centre, Kings Hill, West Malling.
Overview of waste minimisation, recycling and residual options, presented by ERM. Copies of the Baseline Report for the Strategy were distributed to all authorities.
- 9th March 2006, University of Greenwich Conference Centre, Kings Hill, West Malling.
The Strategy timescales were reviewed. ERM discussed their plans to work with individual authorities' officers in April 2006 and to hold workshops at the end of April with the aim to gain a consensus on waste minimisation, recycling, composting and residual waste options. It was decided that a 'Headline Strategy' should be prepared by May 2006. It was agreed that the Headline Strategy should be shared as a consultation draft with the Kent Waste Open Forum representatives during June/July 2006. It was decided that the revised Headline Strategy and Action Plan would be available for adoption for each authority at the end of September 2006.
- 5th July 2006, University of Greenwich Conference Centre, Kings Hill, West Malling.
The draft consultation Strategy was discussed and agreed upon. The group was informed of the accessibility of the public consultation process and the surrounding publicity. ERM presented the timetable of the next stages of the Strategy development. The development of action plans was addressed.
- 19th September 2006, University of Greenwich Conference Centre, Kings Hill, West Malling.
An update on the consultation process was given, with details of publicity undertaken. It was noted that all information from the consultation will inform the Headline Strategy and Action Plans.
- 16th November 2006, University of Greenwich Conference Centre, Kings Hill, West Malling.

ERM presented on the consultation responses. Following the consultation feedback, amendments to the Headline Strategy were agreed. The KWF agreed that the Strategy should now be accepted for adoption.

4.2 MEMBER BRIEFINGS

Member briefings and roundtable discussions were held to provide Members with the opportunity to discuss the Strategy with ERM and raise any issues. The events provided education and information about the Strategy development.

4.2.1 Meeting Details

- June 2005
This briefing introduced the Members to the Strategy process.
- 29th November 2005.
This briefing offered Members the chance to address issues that were emerging in the preparation of the draft Strategy.
- 13th December 2005.
During this Member briefing ERM presented the progress so far and the next steps in the Strategy development.
- 12th June 2006.
At this Member briefing the key features of the draft Headline Strategy were discussed, with particular reference made to recycling and composting targets.

5. COMMUNITY ENGAGEMENT

5.1 KENT WASTE OPEN FORUM MEETINGS

Kent Waste Open Forum (KWOF) meetings were held for the key stakeholders in waste management to ensure that the Strategy was informed by a broad range of views. These interactive sessions were held to engage further stakeholder participation.

5.2 WHO WAS INVOLVED?

Invitees to the KWOF meetings included: elected Members and officers from each of the Kent District and Borough councils and Kent County Council. Representatives from the voluntary, community and waste industry sectors, the Environment Agency, neighbouring authorities, Parish councils and the local community were also invited to attend.

5.3 MEETING DETAILS

Three KWOF were held at key stages of the Strategy development.

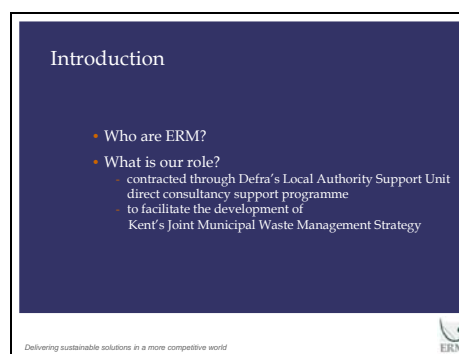
- 13th October 2005, University of Greenwich Conference Centre, Kings Hill, West Malling.

The first meeting focused on the strategy vision and principles. It was agreed that a clear waste management vision statement was necessary for Kent. The group discussed options, initiatives and targets with regards to waste minimisation, recycling and composting. The group evaluated the Landfill Allowance Trading Scheme and different waste technology options.

- 9th March 2006, University of Greenwich Conference Centre, Kings Hill, West Malling.

This session focused on the options for waste reduction, recycling, composting and residual waste. The group discussed the environmental impacts, financial and risk issues, social impacts of each of the waste options. ERM presented the on the progress of the JMWMS for Kent.

Figure 2 – ERM Presentation Slides



Progress Since October's Kent Waste Open Forum

Delivering sustainable solutions in a more competitive world



Refinement Of Strategy Working Objectives

- To meet the statutory targets set for Kent, and exceed them in areas where this is a locally agreed priority
- To deliver high quality services
- To engage householders so that they understand the need for waste reduction and recycling, and participate fully in recycling services
- To support, where possible, other related policy aims of the Kent authorities (eg regeneration)
- To influence the Waste Development Framework and Regional Spatial Strategy to ensure deliverability
- To secure sufficient funding to implement the Strategy

Delivering sustainable solutions in a more competitive world



Working Objectives - Waste Minimisation

- To break the link between waste growth and economic growth
- To look at waste growth in Kent on a per capita basis
- To lobby Government for new measures in areas such as product design, packaging and producer responsibility, which need to be addressed at national or international level

Delivering sustainable solutions in a more competitive world



Working Objectives - Recycling & Composting

- To reach a 40% recycling and composting target
- To set realistic and achievable targets
- To aspire to the regional recycling targets
- To make recycling convenient for householders, across all housing types
- To increase participation and capture in existing schemes, alongside investing in new services
- To invest in schemes that yield the best results in terms in recycling and composting for Kent

Delivering sustainable solutions in a more competitive world



Working Objectives - Landfill Allowance Trading Scheme (LATS)

- To provide additional capacity to enable Kent to meet its LATS obligations (and not to rely on purchasing allowances)
- To avoid over-scaling facilities, which could attract waste imports to the County
- To take a pragmatic approach to trading, willing to trade but not reliant on trading for compliance or essential income

Delivering sustainable solutions in a more competitive world



The Development of Options

- Derived from views from October's KWOF
- Strategic rather than site-specific
- Often options are not mutually exclusive
- To help guide decisions
- To help guide the direction of the Strategy

Delivering sustainable solutions in a more competitive world



Waste Minimisation Options Appraisal

- KWOF agreed that this is a key issue
- The aim of report
 - to explore the full potential for waste minimisation
 - to examine the *effectiveness* and *cost* of various waste minimisation and re-use initiatives
 - to help the Kent Waste Partnership prioritise future funding and effort

Delivering sustainable solutions in a more competitive world



Options Considered

- Promotion of home composting
- Promotion of 'waste aware' shopping
- Reduction of junk mail
- Promotion of loaning, hiring, leasing, repair of products
- Diversion of trade waste
- Support of re-use schemes - local waste exchanges, charity shops etc.

Delivering sustainable solutions in a more competitive world



Recycling & Composting Options (1)

- Overall Aim
 - to examine the potential of recycling and composting in Kent
 - to examine separately the potential for recycling at:
 - kerbside;
 - bring; and
 - HWRCs.
 - to aid future decisions over services

ERM logo and tagline: Delivering sustainable solutions in a more competitive world

Recycling & Composting Options (2)

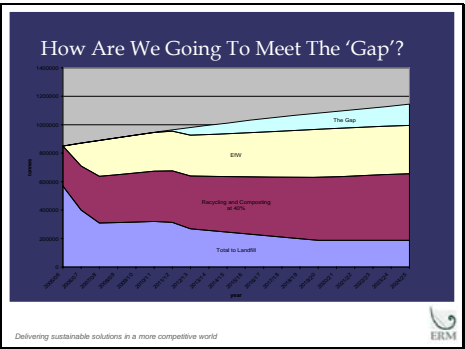
- Kerbside
 - increase participation and capture of existing schemes
 - expand existing schemes to all relevant households
 - introduce to all WCAs:
 - glass;
 - kitchen waste;
 - green waste;
 - cardboard;
 - plastic; and
 - lids & cans.
 - assess the effects of adding:
 - kitchen and card to existing green waste collections (mixed); and
 - mixed - plastic and cans collection.

ERM logo and tagline: Delivering sustainable solutions in a more competitive world

Recycling & Composting Options (3)

- Bring Facilities
 - increase tonnage through bring facilities by 10%, 15% and 20%
 - expand the range of materials to concentrate on those not collected at kerbside
- HWRCs
 - increase recycling rate across all sites to 60%
 - increase recycling rate across all sites to 75%

ERM logo and tagline: Delivering sustainable solutions in a more competitive world



Residual Options

- Maximise the use of Allington Facility
- Provide a new smaller facility
 - energy from waste
 - gasification/ pyrolysis ('advanced thermal treatment')
 - autoclave
 - anaerobic digestion
 - mechanical biological treatment (MBT)
- Use Allington to combust by-products of 'treatments'
- Explore small scale in-vessel composting facilities
 - beyond those needed to support the recycling options

ERM logo and tagline: Delivering sustainable solutions in a more competitive world

Development Of Assessment Criteria

- To assess recycling & composting and residual waste management options
- Four key areas
 - environmental
 - air pollution, water pollution, transport impacts etc.
 - social
 - job creation, accessibility to services etc.
 - financial cost
 - practicability/ risk
 - reliability of delivery, liability of end products etc.

ERM logo and tagline: Delivering sustainable solutions in a more competitive world

How Are We Appraising The Options?

- A mixture of qualitative and quantitative assessment methods
- The 'life cycle' approach where appropriate
- Professional judgement where required

ERM logo and tagline: Delivering sustainable solutions in a more competitive world


Other Key Areas Being Explored....

- How fully to integrate the community sector and social enterprise into the Strategy
- Exploring the links between municipal and commercial and industrial waste


ERM logo and tagline: Delivering sustainable solutions in a more competitive world

ASSESSMENT CRITERIA				
ENVIRONMENTAL				
SOCIAL				
RISK & FINANCIAL				

Low Medium High




Delivering sustainable solutions in a more competitive world

- ### What We Need From You...
- Input into the options appraisal process
 - What criteria are most important to Kent?
 - for example...
 - is it to reduce council tax and provide a 'cheap' service?; or
 - is it to reduce HGV traffic on the road in Kent?
 - This afternoon we will be
 - sharing information on the options
 - discussing in detail each of the criteria
 - identifying where your priorities lie
 - exploring the criteria
- 
- Delivering sustainable solutions in a more competitive world

ASSESSMENT CRITERIA				
Land use Impacts				
Air Pollution				
Emissions of Greenhouse Gases				
Impact of Resource use (Resource Depletion)				
Compatibility with the Waste Hierarchy				
Impact on Water Pollution				
Energy generation and consumption				

Low Medium High



Delivering sustainable solutions in a more competitive world

- 19th September 2006, University of Greenwich Conference Centre, Kings Hill, West Malling.
This session focused on the Headline Strategy, consultation and the development of the action plans.

Annex B provides an example delegate list for the KWOF meetings.

6. WIDER COMMUNITY ENGAGEMENT

6.1 COMMUNITY DISCUSSION GUIDE

Between April and July 2005 the Kent community was invited to highlight waste management issues in the county, to identify where waste management responsibilities lay and to offer solutions to any identified problems. Dialogue by Design produced and distributed a discussion guide to and invited over 2000 organisations and individuals to take part in the consultation. The findings were considered and used to inform the JMWMS for Kent.

The dominant issues raised by the community were recycling facilities, recycling awareness and support, packaging materials and organics composting, constituting more than 50% of the recorded issues.

Annex C provides a list of those invited to take part in the consultation and provided with discussion guides.

6.2 COMMUNITY SECTOR MEETINGS

Local waste community and voluntary representatives were invited to express their views on waste management at two workshops run by ERM and KCC.

6.2.1 Meeting Details

One meeting was held before the draft strategy completion and the other during the public consultation phase.

- 20th February 2006, East Malling Conference Centre.
In this first session the attendees from the waste community and voluntary sector were invited to discuss how they could support improved waste management in Kent and what assistance they deemed necessary. The representatives were encouraged to share best practice and new ideas.
- 26th September 2006, The Friars, Aylesford.
This event was designed for representatives from the waste community waste sector. The session focused on how the Community Waste Sector the Kent Waste Partnership can work together effectively to take the Strategy forward. Action Plans for the Community Waste Sector were developed.

7. STRATEGY PUBLICITY & CONSULTATION

7.1 PUBLIC CONSULTATION DOCUMENTS

The draft Strategy was developed as a result of extensive dialogue with stakeholders over 15 months, as outlined in Sections 5.0 and 6.0. The public consultation, ran for ten weeks from 26th July 2006 until 4th October 2006, and represented a further opportunity for key stakeholders to provide their views and for the public to consider the draft policies. The JMWMS consultation ran at the same time as the Waste Development Framework (WDF) consultation to ensure synergy between the two processes and joint learning.

Over 2,000 organisations and individuals were sent letters on 25th July 2006 advising them of the consultation details and inviting their contributions.

The KWF partners worked together to ensure the public received information about the consultation and could take part. This included the distribution of posters, leaflets and copies of the draft Strategy as below:

Consultation Strategy Document

Printed draft headline Strategy with consultation questions and annexes.

- 13 copies sent to the main libraries in Kent.
- 41 copies sent to KCC and district council main and area offices.
- Numerous copies available at KCC events, including KWOFF; Community sector workshops; Parish council event and WDF events.
- Copies also supplied when requested to representatives for the Channel Tunnel Rail Link, KROWN and Tilmanstone parish.

Consultation Flyers

An A4 folded leaflet with information about the reasons for the consultation, instructions about how to take part, contact details for KCC and the districts and waste management ideas.

- Approximately 80 flyers for each of the 39 largest Kent libraries.
- Each district council and KCC supplied with 2000 leaflets each¹.
- Leaflets were also available at KCC events, including KWOFF; Community sector workshops; Parish council event and WDF events.

Consultation Posters

An A3 poster inviting the reader to contribute with consultation contact details and dates.

- 10 posters for each of the 39 largest Kent libraries.
- Posters were also displayed at KCC events including KWOFF and Community sector workshops.
- 10 posters delivered to each of the district councils and KCC².

¹ The flyers were displayed and distributed by each district and KCC independently. Leaflets were generally available at each of the district offices. Other locations include: Dartford shopping areas; Maidstone, Sevenoaks and Thanet parish councils; selected Maidstone and Sevenoaks Members; Tonbridge and Malling leisure centres; KCC exhibition unit; KCC Invicta House and Block H; Household Waste Recycling Centres and direct to households in Ashford.

² The posters were displayed and distributed by each district and KCC independently. Posters were generally available at each of the district offices. Other locations include: Dartford shopping areas; KCC exhibition unit; KCC Invicta House and Block H; Majority of Household Waste Recycling Centres.

7.2 CONSULTATION ARTICLES

The following article was sent to each of the district councils for inclusion in their local newsletters.

Figure 3 – Newsletter Article

Waste – What do you think?

- How should we deal with the growing amount of household waste we produce in Kent? Kent's local authorities have some ideas, but we want to know what you think.

Why is this important?

- Each person in Kent produces about half a tonne of waste every year – that's about the same weight as the average cow! This means that 800,000 tonnes of household waste was produced in Kent last year, which is enough to fill refuse trucks parked nose to tail in the three lanes around the M25 – with some left over.
- It costs tens of millions of pounds to collect and dispose of the household waste we produce in Kent. 64% of this waste goes into landfill and 29% is recycled or composted.
- But every year the amount of waste created grows. At the current rate of growth, Kent's authorities will have to deal with a further 260,000 tonnes of waste by 2020.

So what should be done about all this waste?

- The Kent Waste Forum, a partnership between the district councils (which collect the waste) and Kent County Council (which disposes of it), is putting together the Kent Joint Municipal Waste Management Strategy. This sets out how the local authorities of Kent intend to manage the household waste produced by Kent's residents over the next 20 years.
- A draft "headline strategy" that sets out the main policies, is now available. The next stage in developing the strategy is to draw up action plans that will set out how the strategy will be achieved across the county. We want your opinions of the headline strategy and your views on what the action plans should contain. So help shape the future by visiting www.kentwaste.dialoguebydesign.net or contact the forum via 0845 345 0210 to find out how you can have your say.

The article was used in the following publications:

- In Shape, Summer 2006 – Sevenoaks.
- Here & Now, Aug/Sept 2006 – Tonbridge and Malling.
- Ashford Voice, Aug/Sept 2006 – Ashford.
- District Life, Autumn 2006 – Canterbury.

7.3 KENT COUNTY COUNCIL WEBSITE

Information about the consultation was available at the following website locations:

- Link on 'Home Page' to 'Waste Consultation' page.
- 'Waste Consultation' page included a link to Dialogue by Design (DbyD) website.
- Information and DbyD link on 'KWF', 'Waste Strategy' and 'KWOF' sections.
- Information on 'Current Consultations' page.
- Article titled 'Consultation Starts on Kent's Waste Strategy' available on 'News' section.
- Information, links and articles also available on district council websites

7.4 MEDIA COVERAGE

Media information and requests were handled by DTW Vavasour, a specialist independent consultancy throughout the consultation period.

Full details of the coverage received are available in Annex D.

7.5 RESPONSE METHODS

Those that wanted to contribute to the consultation were able to do this online at www.kent.gov.uk or request paper versions and send responses to a freepost address. A helpline and email contact was available to assist anyone with any special needs throughout the process.

8 SUSTAINABILITY APPRAISAL

The Joint Municipal Waste Management Strategy (JMWMS) was subject to a Sustainability Appraisal, the purpose of which was to systematically identify and evaluate the economic, social and environmental impacts of the strategy. The Sustainability Appraisal process incorporates the requirements of the European Union Directive on Strategic Environmental Assessment (SEA), which came into force on 21st July 2004 and applies to a range of English plans and programmes.

Kent County Council has carried out a Sustainability Appraisal (SA) as part of the Joint Municipal and Waste Management Strategy (JMWMS). The SA tests the Strategy options and objectives and ensures that the Strategy does not have negative economic, social or environmental impacts.

The first stage of the SA involved establishing the evidence base to be used in the appraisal process. Part of the process of determining the evidence base involved reviewing other policies, plans, programmes and strategies relevant to the JMWMS, Minerals Development Framework, Waste Development Framework and Local Transport Plan. This evidence base is documented in a Scoping Report.

The draft Scoping Report was produced in collaboration with consultants Scott Wilson and Levett-Therivel. The draft report was made available for consultation until Friday 13 May 2005. Under the SEA Directive there is a statutory duty to consult the four SEA Consultation Bodies on the scope of the SA (Countryside Agency, English Heritage, English Nature and the Environment Agency.) Other relevant bodies with social and economic responsibilities should also be consulted. The Scoping Report was sent to the Consultation Bodies and made available on the Kent County Council website. In November 2005, these reports were expanded to cover the JMWMS and were made available for consultation again during November and December 2005.

The last four stages of the process involved testing and refining the strategy in light of the framework established in the first stage. The process and its findings were detailed in the Sustainability Appraisal report which was published for consultation in July 2006.

Annex A

Strategy Timeline

A1 STRATEGY TIMELINE

Table A1.1 Timeline Showing the Progression of the Strategy.

Jul 05	Aug 05	Sep 05	Oct 05	Nov 05	Dec 05	Jan 06	Feb 06	Mar 06	Apr 06	May 06	Jun 06	Jul 06	Aug 06	Sep 06	Oct 06	Nov 06	Dec 06	
PHASE 1 - Where do we want to go?																		
	OFFICER WORKSHOPS																	
ONGOING SUSTAINABILITY APPRAISAL AND STRATEGIC ENVIRONMENTAL PROCESSES																		
PHASE 2 – What do we need to do to get there?																		
			DRAFT VISION	CONSIDERATION OF OPTIONS				OPTIONS DOCUMENTS	OFFICER WORKSHOPS									
			KENT WASTE OPEN FORUM	OFFICER WORKSHOPS	KENT WASTE FORUM		COMMUNITY SECTOR MEETING	KENT WASTE OPEN FORUM										
			KENT WASTE FORUM	MEMBER BRIEFING	MEMBER BRIEFING			KENT WASTE FORUM										
PHASE 3 – What things do we need to do to get there?																		
										HEADLINE STRATEGY PRODUCED	DEVELOPMENT OF ACTION PLANS				STRATEGY & ACTION PLANS PUBLISHED			
											MEMBER BRIEFING	KENT WASTE FORUM		KENT WASTE OPEN FORUM			ADOPTION BY LA'S	
											CONSULTATION WITH LA'S		KENT WASTE FORUM					
													COMMUNITY SECTOR MEETING					
											PUBLIC CONSULTATION							

Annex B

Delegate list KWOF meeting 9th March 2006

Table B1.1 KWOFF Delegate List 9th March 2006.

Title	First Name	Last Name	Organisation
Mr	Stuart	Alford	Gravesham Borough Council
Councillor	Jill	Anderson	Tonbridge & Malling Borough Council
Mrs	Caroline	Arnold	KCC Waste Management
Mr	Simon	Aumonier	ERM
Mr	Peter	Baldock	Kent County Council
Miss	Tilly	Bayes	KCC Waste Management
Mr	Phil	Beddoes	Tonbridge & Malling Borough Council
Mrs	C	Bell	
Mr	Richard	Boden	Wyecycle
Mr	Paul	Bolas	c/o Environment Agency
Mr	Bob	Brown	Independent Consultant
Mr	Phil	Burgon	MDJ Light Bros (SP) Ltd
Mr	Alan	Cansdale	Environment Agency
Councillor	Alison	Cook	Sevenoaks District Council
Mr	Hugh	Cooper	Weald of Kent Preservation Society
Mr	Niall	Cormac-Walshe	Country Style Composting
Councillor	Lee	Croxtan	Gravesham Borough Council
Councillor	John	Cunningham	Tunbridge Wells Borough Council
Ms	Sarah	Dagwell	Medway Council
Mr	Russell	Davies	Medway Council
Councillor	Trudy	Dean	Kent County Council
Ms	Ellie	Dodds	Cory Environmental
Mr	Chris	Drew	GOSE
Councillor	Clive	English	Maidstone Borough Council
Mr	Patrick	Feehily	Kent County Council
Mr	Keith	Ferrin	Kent County Council
Mr	Ian	Finch	Sevenoaks District Council
Mr	Alistair	Finlayson	Viridor Waste (Kent) Ltd
Mr	Dennis	Gardner	Tonbridge & Malling Borough Council
Councillor	Audrey	Gee	Sevenoaks District Council
Mr	Mark	Goldhawk	Swale Borough Council
Ms	Rebecca	Goodwin	Bexley Council
Ms	Lorraine	Graham	Cleanaway Ltd
Mr	Harvey	Guntrip	ReUse Thameswood CIC
Mr	Tim	Haines	Skipaway Ltd.
Mr	Trevor	Heathcote	Country Style Composting
Mr	Frank	Hobbs	

Mr	Brian	Horgan	BJH Synergy
Mr	Peter	Horn	KCC Waste Management
Councillor	Roy	Hunter	Medway Council
Mr	Chris	Jarvis	Biffa Waste Services Ltd
Councillor	Richard	King	Kent County Council
	Sue	Lees	Maidstone Housing Trust
Mr	Michael	Lenaghan	Tonbridge & Malling Borough Council
Mr	Keith	Loney	
Mr	Roger	Lovett	Viridor Waste Management
Mr	Eric	Lowe	Beacon Furniture
Councillor	Alan	Marsh	Kent County Council
Councillor	Philip	McGarvey	Sevenoaks District Council
Ms	Carolyn	McKenzie	Kent County Council
Ms	Julie	Mellor	Tunbridge Wells Borough Council
Mr	Colin	Milligan	Seal Parish Council
Ms	Caroline	Morgan	
Councillor	John	Muckle	Kent County Council
Mr	Charles	Nouham	Sevenoaks District Council
Mr	Mark	Osbourn	Skipaway Ltd.
Mr	Tony	Parker	Canterbury City Council
Mr	David	Plumstead	KROWN
Mr	John	Prance	Dartford Borough Council
Mr	Steve	Rees	Kent County Council
Mr	William	Richardson	Kent Federation of Amenity Societies
Clr	William	Richardson	Shepway District Council
Councillor	Malcolm	Robertson	Maidstone Borough Council
Mr	David	Robinson	Ashford Borough Council
Mr	Simon	Roud	Roud Recycling
Councillor	Jenny	Samper	Canterbury City Council
Mr	Mark	Seed	Thanet District Council
Mr	Gary	Stevenson	Tunbridge Wells Borough Council
Mr	Douglas	Suckling	Ivychurch Parish Council
Mr	Michael	Taylor	
Mr	Douglas	Taylor	
Mr	Charlie	Trousdell	TJ Composting Group Limited
Ms	June	Unwin	Bexley Council
Mr	Roger	Walton	Dover District Council
Mr	Malcolm	Wells	Maidstone Borough Council
Mr	Tony	Wilkinson	Reclamet Ltd
Mr	Richard	Wilson	Sevenoaks District Council
Mr	Peter	York	Kent Federation of Amenity Societies

Annex C

Community Discussion Guide Recipients

C1 COMMUNITY DISCUSSION GUIDE

Table C1.1 JMWMS Consultation Mail-Out List

Organisation	Title	First	Surname
16plus County Management	Ms	Philippa	Forster
501	Mr	Dave	Lamburton
A Winchester & Sons			
AB Contractors Ltd			
Abbey National	Mr	Ian	Harley
Abbey Park Holdings Ltd c/o Atis Real Wetheralls	Mr	Tony	Collins
Abbeyfield Medway Valley Society	Mr	Trevor	Cox
Abbott Laboratories Ltd	Mr	Neil	Fenn
Acol Parish Council	Mr	Roy	Wade
Acrise Parish Council	Mr	Winfried	Richter
Action with Communities in Rural Kent	Mr	Nigal	Whitburn
Adams Hendry	Ms	Suzanne	Ellis
Adams Hendry	Mr	Andrew	Turner
Addendum Ltd			
Addington Parish Council	Mrs	P	Hughes
Addleshaw Goddard	Ms	Sue	Douglas Evans
Adisham Parish Council	Mrs	Ann	Crossley
AEI Cables Ltd	Mr		Oakley
Age Concern (Kent & Medway Liaison Group)	Mr	Chris	Elliott
Age Concern England	Mr	Chris	Twydell
Agricultural Lime Association	Mr	Fred	Leitch
Airfield Residents Association	Mr	Richard	Woodhams
Alba Transport Services			
Albany Architectural Services & Planning Consultancy	Mr	P	Reeves
Aldington and Bonnington Parish Council	Mrs	C M	Knight
Alfred McAlpine Utilities Services Ltd	Mr	Ron	Cobbett
Alkham Parish Council	Mrs	Angela	Miller
Alders Department Stores	Mr	Stephen	Carter
Alliance Environment & Planning	Mr	Steve	Fidgett
ALLINGTON INCINERATOR PUBLIC LIAISON COMMITTEE	DR	B	WHITE
Alsop Verrill	Mr	Alan	Gunne-Jones
Amphenol Limited	Mr	Tony	Taylor
AMPHENOL LTD	MR	M	SCOTT
Andrew Martin Associates	Mr	Kevin	Coleman
Anthony Jenkins Fuel Oil			
Antler Homes Wessex	Ms		Knight
APM Metals Ltd	Mr	Peter	Hyams
Appledore Parish Council	Mrs	Emily	Neighbour
Applied Environmental Research	Mr	Steve	Baker
Arcadium Ltd	Mr	R	Hill
Arriva Southern Counties	Mr	K	Hawkins
Arriva Southern Counties	Mr	Malcolm	Spalding
Arriva Southern Counties Ltd	Mr	Bob	Scowen
Asda Stores Ltd	Mr	Mark	Withers
Ash Parish Council	Mrs	Jeanette	Potts
Ash-cum-Ridley Parish Council	Ms	J	Redman
Ashford & Shepway PCTs	Mr	Charlie	Manicom

Ashford Access Group	Mrs	Susan	Mansfield
Ashford Borough Council	Mr	Richard	Alderton
Ashford Borough Council	Mr	Martin	Bacon
Ashford Borough Council	Cllr	Neil	Bell
Ashford Borough Council	Cllr	Mick	Burgess
Ashford Borough Council	Cllr	Paul	Clokie
Ashford Borough Council	Cllr	Bob	Cowley
Ashford Borough Council	Mr	Ian	Grundy
Ashford Borough Council	Cllr	Bernard	Heyes
Ashford Borough Council	Mr	David	Hill
Ashford Borough Council	Cllr	Mick	Hubert
Ashford Borough Council	Mr	John	Jory
Ashford Borough Council	Mr	Richard	Smith
Ashford Borough Council	Ms	Suzy	Tigwell
Ashford Borough Council	Cllr	Jim	Wedgbury
Ashford Chamber of Commerce	Ms	Jo	James
Ashford Chamber of Commerce & Industry & Enterprise	Mr	Chris	Capron
Ashford Recycling Centre	Mr	P	Ford
Ashford Rural Trust	Mr	Neville	Green
Ashford Town Centre Partnership	Mr	Chris	West
Ashford Youth Forum	Mr	William	Howard
ASHFORDS FUTURE	MR	D	EPSTEIN
Ashley Spanner	Mr	Ashley	Spanner
Ashtenne (Sittingbourne) Ltd c/o Paul Sharpe Associates	Mr	Paul	Sharpe
Ashwell Developments Ltd	Mr		Butler-Finbow
Association of Convenience Stores			
ASW Sheerness	Mr	Warren	Hewitt
ATIS Real Weatheralls	Mr	Jeremy	Edge
Attwood Trust c/o Bax Thomas French	Mr	Michael	Bax
Attwood Trust c/o RPS	Mr	Graham	Warren
Attwood Trust c/o W H Deakin	Mr	Harry	Deakin
Austins Land Chunnel			
Automotive Precision Components Ltd	Mr	Stefan	Petszaft
AXA PPP Healthcare	Mr	Keith	Gibbs
AXA PPP Healthcare	Ms	Rosie	Serpis
Aylesford Metal Co (1984) Ltd			
Aylesford Newsprint Ltd	Mr	Alan	McKendrick
Aylesford Newsprint Services Ltd	Mr	D	Charlesworth
Aylesford Parish Council	Mr	Andrew	Flindell
Aylesham and District Community Workshop Trust	Mr	Derek	Garrity
Aylesham Parish Council	Dr	Linda	Keen
B&Q plc c/o RPS	Mr	Michael	Hepburn
Babtie	Mr	Paul	Fleetham
Babtie	Mr	David	Green
Babtie Ltd	Mr	Martyn	Heyes
BAE SYSTEMS	Mr	Brian	Tucker
Baker Associates			
Balfour Beatty Rail Infrastructure Services	Mr	Eric	Prescott
Ballast Phoenix	Mr	A	Smith
Bank of England	Mr	Christopher	Bailey
Banner Homes Group	Mr		Kennedy

Bapchild Parish Council	Mr	D	Akhurst
Barham Parish Council	Mrs	Sharon	Baker
Barming Parish Council	Mrs	Alison	Eiffert
Barming Protection Campaign Association	Mr	Peter	Hurrell
Barratt Southern Counties	Mr		Kennedy
Bartholomew	Mr	Iain	Macdonald
Barton Willmore	Mr	Paul	McCreery
Barton Willmore	Mr	C	Rand
BARTON WILLMORE PARTNERSHIP	MR	J	STANDEN
Barton Willmore Planning Partnership	Mr	Alasdair	Mackenzie
Barton Willmore Planning Partnership	Mr	Jonathan	Standen
Bax Thomas French Chartered Surveyors	Mr	R P	Thomas
Bean Parish Council	Mrs	Jan	Becket
Bearsted Parish Council	Mr	C E	Palferman
Beaumont	Mr	Adam	Tomlinson
Beazer Partnerships	Mr	Nigel	Ingram
Beechcroft Developments	Mr		Holliday
Beechwood Homes Ltd.	Mr		Peter
Bekesbourne with Patribourne Parish Council	Mrs	Gail	Hubbard
Bell Cornwell Partnership	Mr	Anthony	Hawkins
Bellway (Thames Gateway South)	Mr	M	Smith
Bellway Homes	Mr	Kevin	Scott
Bellway Homes (South East) Ltd.	Mr		Brindley
Beltinge Gardners Society	Mr	Michael	Smith
Benenden Parish Council	Ms	Maria	Knight
Berkeley Community Villages	Mr		Brown
Berkeley Group Plc (Berkeley Community Villages)	Mr	Ian	Shrubsall
Berkeley Homes (Eastern) Ltd	Mr	Michael	Rushman
Berkeley Homes (Strategic Land Ltd)	Mr	Dan	Hallett
Berkeley Homes South East Limited	Mr		French
Bethersden Parish Council	Mr	Tony	Bryan
Bexley Borough Council	Mr	Stephen	Burke
Bexley Council	Mr	G	Bryant
Bexley Council	Mr	Richard	Hawkins
Bexley Gospel Trust	Mr	D	Hicks
Beyond Waste	Mr	A	Potter
BFI Ltd			
BG Group Plc			
Bicknor Parish Council	Mrs	A J	Wainman
Bidborough Parish Council	Mrs	E	Divall
Bidcorp Plc c/o Terence O'Rourke	Mr	Steve	Molnar
Biddenden	Mrs	S	Daly
Biddenden Parish Council	Mr	Graham	Smith
Biffa Waste Services Ltd	Mr	J	Rhodes
Bilsington Parish Council	Ms	Jane	Porter
Bioganix Ltd	Mr	N	Helme
Bircham Dyson Bell	Ms	Lisa	Percival
Birchington Parish Council	Mrs	Colette	Coleman
Birkbeck University	Mr	John	Shepherd
Birling Parish Council	Mrs	Diane	Pawley
Bishop Consultancy Ltd	Mr	Alan	Bishop
Bishopsbourne Parish Council	Mr	Gerald	Wenham
Blean Parish Council	Mrs	A	Clover

Bloomfields Ltd	Ms	Anna	Bloomfield
Blue Sky Planning	Mr	Jonathan	Best
Blueco Ltd c/o Drivers Jonas	Mr	Jeff	Pyrah
Blythwood Care	Mr	Ray	Avenell
Bobbing Parish Council	Mrs	Sue	Crawford
Bond Pearce	Ms	Sarah	Homes
Bond Retail Services Ltd			
Borden Parish Council	Mrs	Jennifer	Mazzocchi
Borough Green Parish Council	Mrs	H M	Damiral
Borough Green Sand Pits Ltd	Mr	R K	Body
Boughton Aluph and Eastwell Parish Council	Mrs	L	Hedley
Boughton Malherbe Parish Council	Mrs	P	Anderson
Boughton Monchelsea Parish Council	Mr	Derek	Gouldsworthy
Boughton-under-Blean Parish Council	Mr	T A	D Covell Roberts
Bourne Leisure c/o Natahniel Lichfield & Partners	Ms	Margaret	Baddeley
Bovis Homes Group PLC	Mr		Brazier
Bovis Homes Limited (SE Region)	Mr	G	Humphrey
Bowman Brothers			
Boxley Parish Council	Mrs	P	Bowdery
Boyer Planning	Mr	Chris	Wilmshurst
Boyer Planning			
BP Travel Trade Services Ltd	Mr	Paul	Markland
Brabourne Limeworks	Mr	A J	Graves
Brabourne Parish Council	Mr	P J	Scotton
Brachers	Mr	Henry	Abraham
Bracknell Forest Borough Council	Mr	Steve	Loudon
Brasted Parish Council	Mr	M	Downing
Brasted Sand Pits Ltd			
Brasted Sandpits Ltd			
Brazier Construction	Mr		Mason
Bredgar Parish Council	Mrs	Teresa	Hudson
Bredhurst Parish Council	Mrs	Melanie	Fooks
Brenchley Parish Council	Mrs	P J	Playfoot
Brenzett Parish Council	Mrs	Tanya	Butler
Brett	Mr	Stewart	Mitchell
Brett Aggregates Limited			
Brett Concrete Ltd	Mr	J	Akehurst
Brett Gravel Limited			
Brett Waste Management Ltd	Mr	Alastair	Finlayson
Brick Development Association/Southern Brick Federation			
Bridge Parish Council	Mrs	Christobel	Seath
Brighton & Hove City Council	Mr	Andy	Renaut
Britannia Refined Metals Ltd	Mr	Alan	Breen
Britannia Refined Metals Ltd	Mr	Neil	Wardle
British Aggregates Association	Mr	Peter	Huxtable
British Cement Association	Mr	John	Herbert
British Ceramic Confederation	Mr	Christopher	Hall
British Ceramic Confederation (Southern Brick Federation)	Mr	Melvyn	Hayward
British Council of Shopping Centres	Mr	Michael	Taplin
BRITISH DIVING SOCIETY	MRS	A	RILLIE
British Geological Society			

British Gliding Association	Mr	Roger	Coote
British Horse Society	Mrs	Elizabeth	Akenhead
British Horse Society	Ms	Liz	Giles
British Horse Society	Ms	Susan	Quarendan
British Horse Society	Ms	Anne	Rillie
British Horse Society	Mr	S	Saunders
British Marine Aggregate Producers Assn. (BMAPA)	Mr	Richard	Griffiths
British Motorcyclists Federation	Mr	Kevin	Mills
British Retail Consortium			
British Shops & Stores Association Ltd			
British Waterways			
British Wind Energy Association	Dr	Martin	Marais
Broadlands	Mr	Paul	Carter
Broadstairs and St.Peters Parish Council	Mr	Roy	Dexter
Broadstairs Quaker Meeting	Miss	Elizabeth	Cooper
Brook Parish Council	Mrs	V H	Hicklin
Brookland Parish Council	Mrs	Judith	Batt
Brooklyn Salvage & Maidstone Caravan Repair Centre			
Broomfield and Kingswood Parish Council	Mrs	S	Wotton
Bryant Homes Ltd	Mr	Nigel	Agg
BS Pension Fund Trustee Ltd c/o Donaldsons	Mr	Ben	Wrighton
BSF Planning Consultants	Ms	Karen	Banks
BSF Planning Consultants	Mr	David	Jarman
BSF PLANNING CONSULTANTS	MS	J	TAYLOR
BSF Planning Consultants	Ms	Jeanne	Taylor
BT plc c/o RPS	Mr	David	Churchill
BTCV	Ms	Pauline	Chamberlain
BTCV	Mr	Mike	Cook
BTF Lister	Mr	R P	Thomas
Buchanan Consulting Engineers	Ms	Pippa	Martin
Buckinghamshire County Council	Mr	Graham	Liddiard
Bureau Veritas Consulting Ltd			
Burham Parish Council	Ms	Pam	Saunders
Burmarsh Parish Council	Ms	Linda	Healey
Business Link (Kent)	Mr	J	Leigh-Pemberton
Business Link Kent	Ms	Claire	Coday
c/o Gravesham Borough Council	Ms	Barbara	Rambousek
c/o Nasons of Canterbury	Mr	Nick	Betts
CALA Homes (South) Ltd	Mr		Emett
Campaign for Real Ale (CAMRA)	Mr	John	Hedington
CAMPBELL GROCERY PRODUCTS LTD	MR	R	GILES
Campbell Hooper	Mr		Bidder
Campbells Grocery Products Ltd	Mr	Tim	Gregory
Cannon Hygiene			
Canterbury & Coastal Primary Care Trust	Dr	Jonathan	Sexton
Canterbury & District Enterprise Trust	Ms	Janet	Merza
Canterbury & Whitstable Liberal Democrat Association	Mr	Cliff	Arter
Canterbury 4 Business	Mr	M J	Head
Canterbury Afternoon Townwomen's Guild	Ms	Ruth	Smith
Canterbury Branch United Nations Association	Mrs	Madeleine	Webster
Canterbury Christ Church College	Mr	William	Taylor
Canterbury Christ Church University College	Mr	Keith	Poole
Canterbury Christ Church University College	Prof	Michael	Wright

Canterbury City Council	Ms	Jillian	Bank
Canterbury City Council	Mr	Kim	Bennett
Canterbury City Council	Cllr	M	Berridge
Canterbury City Council	Mr	Mark	Burnnell
Canterbury City Council	Mr	Dennis	Button
Canterbury City Council	Mr	Colin	Carmichael
Canterbury City Council	Cllr		Cavell
Canterbury City Council	Mr	Robin	Cooper
Canterbury City Council	Cllr		Dixey
Canterbury City Council	Cllr	N	Eden-Green
Canterbury City Council	Cllr	P	Lee
Canterbury City Council	Mr	Matthew	McIlellan
Canterbury City Council	Cllr	M	Nee
Canterbury City Council	Cllr	L	Norris
Canterbury City Council	Ms	Viv	Pritchard
Canterbury City Council	Ms	Penny	Sharp
Canterbury City Council	Mr	Darren	Simpson
Canterbury City Council	Mr	J	Sinstadt
Canterbury City Council	Cllr	P	Todd
Canterbury City Council	Mr	Adrian	Verrall
Canterbury City Council	Mr	Bob	White
Canterbury City Management Ltd	Mr	P	Esclasse
CANTERBURY COLLEGE	MRS	P	ROBERTS
Canterbury College	Mr	Geoff	Terry
Canterbury District Chamber of Commerce	Mr	James	Cross
Canterbury Foods	Mr	Bob	Mollison
Capel Parish Council	Mrs	Jane	Lamb
Capel-le-Ferne Parish Council	Mrs	M	Leppard
Capita Symonds	Mr	S	Trickett
Caravan Club c/o Hepher Dixon	Ms	Caroline	Shipperlee
CARE (Conserve Adisham's Rural Environment)	Mr	W A	Armstrong
Carillion Richardson (Thanet) Ltd c/o Nathaniel Lichfield & Partners	Mr	Roderick	Macleod
Carpenter Planning Consultants	Ms	Becky	Rejzek
CARTER JONAS	MR	P	CLARKE
Carter Jonas	Mr	Gareth	Gardener
Carter Jonas	Ms	Claire	McIntosh
Carter Jonas	Mr	David	Potter
Carter Jonas	Mr	Sean	Silk
Castlemore Securities Ltd c/o G L Hearn	Ms	Sue	Ross
CDC 2020 plc	Mr		Pike
Centex Strategic Land	Mr		Evans
Centre for Ecology & Hydrology			
CF Thurlow Planning Consultant	Mr	Cliff	Thurlow
CGMS	Ms	Lynn	McIver
Challock Parish Council	Miss	B J	Hughes
Channel Chamber of Commerce & Industry	Mr	Peter	Hobbs
Channel Chamber of Commerce & Industry	Ms	Dawn	Hudd
Chapman Recycling Ltd	Mr	Paul	Chapman
Charing Heath Action Group	Mr	John	Hogben
Charing Parish Council	Ms	Dawne	Austen
Charities Aid Foundation	Mrs	Ann	Simmonds
Charity Logistics	Mr	George	Cook

Charles Church SE Ltd c/o Brian Madge Ltd	Mr	Brian	Madge
Charles Church South East			
Charles Church Southern	Mr	Paul	Evans
Charles Planning Associates	Mr	Tony	Charles
Charlier Construction Ltd	Mr	J	Rapley
Chart Sutton Parish Council	Mr	Richard	Avery
Chartered Institution of Wastes Management	Mr	Chris	Murphy
Chartham Parish Council	Mr	Paul	Hornibrook
Chatham Historic Dockyard Trust	Mr	Bill	Ferris
Cheshire County Council	Mr	Peter	Cocker
Chestfield Parish Council	Mrs	L	Livingstone
Chevening Parish Council	Mr	A G	Russ
Chiddingstone Brickworks Ltd	Mr	Mike	Cottrel
Chiddingstone Parish Council	Mrs	Louise	Kleinschmidt
Chilham Parish Council	Mr	Colin	List
Chinacorp Seven Ltd c/o Littman Robeson	Mr	Jonathan	Langham
Chris Blandford Associates	Mr	Geoff	Smith
Christ Church Oxford c/o Smith-Woolley	Mr	Iain	Stevenson
Christian Salvenden Distribution Limited	Ms	Carol	Minter
Church Commissioners	Mr	Andrew	Male
CHURCH COMMISSIONERS FOR ENGLAND	MRS	C	GRANT
Church Commissioners for England c/o DTZ Piedad Consulting	Mr	Peter	Weatherhead
Churches Together in Ashford	Rev	Simon	Ellis
Churchill Retirement Living	Mr		Palmer
Churchill Retirement Living Ltd (South East)	Mr		Byers
Civil Aviation Authority	Mr	Bruce T	Wigmore
Cleanaway Ltd	Mr	T	Drummond
Cleanaway Ltd	Mr	J	Prosser
Cleansing Services Group Ltd	Dr	Ian	Carnell
Clearers South East Ltd			
Cliffsend Parish Council	Mr	Roy	Wade
Cluttons	Mr	Haydn	Payne
Cluttons	Mr	Jeremy	Wilton
CM & R OLLEY (HOLDINGS) LTD	MR	G	MCCARTHY
Coal Authority	Mr	Bill	Denton
Cobham Manor Riding Centre	Mr	J	Brumer
Cobham Parish Council	Mrs	J	Booker
Collier Street Parish Council	Mr	Alan	Crocker
Commission for Architecture & the Built Environment			
Commission for Racial Equality	Ms	Brid	Scanlon
Commission for Racial Equality	Mr	Gurbux	Singh
Community Recycling Network			
Compass Group Government Services	Mr	Mike	Sparrow
Composting Association			
Confederation of British Industries	Mr	Steve	Fidgett
Confederation of British Industry - SE Region	Mr	Nigel	Bourne
Connex	Mr	Oliver	Brousse
Connex South Eastern	Mr	Brian	Thomas
Cooper Estates Ltd	Mr		Cooper
COOPERS WASTE MANAGEMENT	MR	R	COOPER
Coopers Waste Management			
Cory			

Cory Environmental	Ms	Ann	Dugdale
CORY ENVIRONMENTAL LTD	MR	K	COLEBY
Coty UK Ltd	Mr	Robert	Chenot
Country & Metropolitan Homes plc	Mr		Foster
Country Land & Business Association	Ms	Fenella	Collins
Country Land & Business Association (CLA)	Mr	E G	Barham
COUNTRY LAND & BUSINESS ASSOCIATION SOUTH EAST	MRS	J	PAGE
Country Land and Business Association	Mrs	Julia	Page
COUNTRYSIDE AGENCY	MR	D	BROOKE
Countryside Agency	Mr	B	Ellis
Countryside Agency	Ms	Fiona	Fraser-Boulton
Countryside Agency	Mr	Denis	Seabeck
Countryside Agency	Ms	M	Spain
Countryside Properties	Ms	Rosa	Clarke
Countryside Properties Plc	Mr	Alan	Cherry
Countryside Properties Plc c/o Andrew Martin Associates	Mr	K	Coleman
Countryside Residential South East Ltd			
Countrystyle Composting	Mr	T	Heathcote
COUNTRYSTYLE RECYCLING LTD	MR	N	CORMAC-WALSHIE
Countrywide Surveyors	Mr	Andrew	Hopper
Coveney Management Services	Mr	Peter	Coveney
Cowden Parish Council	Ms	Susan	Wellerd
Coxheath Parish Council	Mrs	E L	Heywood
CPRE	Mr	Henry	Oliver
CPRE	Mr	Phil	Sulley
CPRE (Dover Cttee)	Mr	TG	Thomas
CPRE (Kent) Transport Group	Mr	G W M	Thomas
CPRE (local area)	Mrs	Joan	Hill
CPRE (Maidstone District)	Ms	Felicity	Simpson
CPRE (Medway District)	Mr	John	Fairman
CPRE (Sevenoaks)	Maj.	P J M	Pellereau
CPRE Ashford District Committee	Mr	Charles	Oliver
CPRE DOVER	MR	T	THOMAS
CPRE Kent	Dr	Hilary	Newport
CPRE- Kent	Mr	Gary	Thomas
CPRE Maidstone	Mr	Robert	Humphrey
CPRE Thanet	Mr	David	Mairs
CPRE Tunbridge Wells District Committee	Sir	Brian	Cubbon
CPRE TUNBRIDGE WELLS GROUP	MR	P	ALLEN
CPS Group Ltd	Mr	Kevin	Rice
Cranbrook Parish Council	Mrs	Carol	Kirkaldie
Cremer Whiting & Co Ltd	Mr	Brian	Parkes
Crest Homes (South East) Ltd	Mr	Kevin	Wilcox
Crest Nicholson PLC	Mr	John	Callcutt
Crest Nicholson PLC	Mr		Larkin
Cripps Harries Hall	Mr	Jason	Towell
Crockenhill Parish Council	Mrs	B	Morris
Cromwell Group Services	Mr	Chris	Gilbert
Croudace Limited	Mr	Le	Marquand
Croudace Ltd	Mr	Paul	Lemar
Croudace Ltd c/o Charles Planning Associates	Mr	Stuart	Irvine

Crown Estate	Ms	Jacqueline	Gray
Crown Products (Kent) Ltd	Mr	Michael	Head
Crundale Limeworks	Mr	C	Peach
Crundale Parish Council	Mrs	M	Underwood
CTC (KENT)	MR	B	MCCARTHY
CTRL (UK) Ltd (Union Railways)	Mr	EJ	Allett
Curtis Holt Limited	Mr	Andrew	Strong
Cushman & Wakefield Healy & Baker	Mr	James	Cook
Cyclists Touring Club	Mr	Roger	Burchett
Cyclists Touring Club	Mr	Simon	Flack
Cyclists Touring Club	Mr	Tony	Mack
Cyclists Touring Club	Mr	Brian	McCarthy
CYCLISTS TOURING CLUB	MR	J	SEABROOK
Cyclists Touring Club	Mr	John	Seabrook
Cyclists Touring Club (Thanet)	Mr	Douglas	Bush
D.J.Cook (Builders) Ltd	Mr		Cook
DALCOUR MACLAREN	MR	J	TENNANT
Dalcour Maclaren	Mr	Jonathan	Tennant
Danisco Pack Westminster Ltd	Mr	John	Rigby
Darent Valley Hospital	Ms	Sue	Jennings
Darenth Parish Council	Mr	J	Steggles
Dartford & Gravesham NHS Trust	Ms	A	Dean
Dartford & Gravesham NHS Trust	Ms	S	Jennings
Dartford Borough Council	Cllr	Conrad	Broadley
Dartford Borough Council	Mr	Andrew	Burton
Dartford Borough Council	Cllr	F G	Byrne
Dartford Borough Council	Cllr	B B	Fitzpatrick
Dartford Borough Council	Mr	Graham	Harris
Dartford Borough Council	Mr	Phil	Kessel
Dartford Borough Council	Mr	Lewis	Kirnon
Dartford Borough Council	Cllr	J A	Kite
Dartford Borough Council	Cllr	E J	Lampkin
Dartford Borough Council	Mr	Kenneth	Lawrie
Dartford Borough Council	Cllr	K F M	Leadbeater
Dartford Borough Council	Mr	Tim	Lynch
Dartford Borough Council	Ms	Sian	Phillips
Dartford Borough Council	Mr	Rob	Scott
Dartford Borough Council	Mr	Les	Seaborn
Dartford Borough Council	Cllr	Terry	Smith
Dartford Borough Council	Mr	Julian	Underhill
Dartford Borough Council	Mr	Stefan	Webb
Dartford Borough Council	Mr	Steve	Welch
Dartford District Archaeological Group	Mr	Chris	Baker
David Hicken Associates	Mr	Chris	Atkinson
David Hicken Associates	Mr	David	Hicken
David Hicken Associates	Mr	Martin	Page
David Lock Associates	Mr	Phil	Copsey
David Lock Associates	Mr	David	Lock
DAVID LOCK ASSOCIATES ON BEHALF OF LAND SECURITIES	MR	R	OWEN
David Penney	Mr	David	Penney
David Walker Chartered Surveyors	Mr	Nigel	Brooke
David Walker Chartered Surveyors	Mr	Nigel	Brooke

David Wilson (home counties)	Mr		Kennedy
David Wilson Homes Eastern	Mr	Derek	Lawrence
Davies Arnold Cooper	Mr		Oliffe
Davies Planning Ltd	Mr	M	Davies
Davtee Investments Limited	Mr		Nobes
Deal and Walmer Chamber of Trade Ltd	Mr	Ian	Draper
Deal and Walmer Chamber of Trade Ltd	Mr	Alan	Spiers
Deal Parish Council	Mr	L	Bullman
Defence Estates	Mr	Stephen	Rice
Defence Estates	Mr	Brian	Simpson
Defence Evaluation & Research Agency	Mr	Peter	Endersley
DEFRA	Ms	Suzie	Daykin
DEFRA	Mr	Paul	Tibbles
Denne Group Ltd	Mr	Stephen	Kingsman
Denton Wilde Sapt	Ms	Melanie	Blanchard
Denton with Wootton Parish Council	Mr	Paul	Hornibrook
Department for Transport			
Department of Environment, Food and Rural Affairs	Dr	James	Park
Department of Transport, Local Government and the Regions (DTLR)			
Derbyshire County Council	Mr	Martin	Smith
Derek Horne & Associates	Mr	Derek	Horne
Detling Autobreakers			
Detling Parish Council	Mrs	S	Babington
Devon County Council	Mr	Roland	Pyle
Dialogue by Design	Dr	Amy	Sanders
Dickens Country Protection Society	Mr	R	Theobald
Diocesan Board of Finance	Mr	Phillip	Bell
Diocese of Canterbury			
Diocese of Rochester	Mrs	Louise	Gilbert
Director of Environment & Regeneration			
Disability Rights Commission			
Disabled Drivers Association	Mrs	M	Hides
Disabled Driver's Association	Mr	John	Cooke
Disabled Persons Accommodation Agency			
Disabled Persons Liaison Committee	Mrs	Vicki	Chittenden
DISK (Disability Information Services Kent)	Mr	Robert	Taylor
Ditton Parish Council	Mrs	S J	Kavanagh
Doddington Parish Council	Mrs	Pier	Vousden
Donaldsons	Mr	Ben	Wrighton
Dover Area Committee Parish Council	Mr	P	Mummery
Dover District Chamber of Commerce	Mr	Ray	Haines
Dover District Council	Mr	N	Aziz
Dover District Council	Cllr	M	Burnham
Dover District Council	Cllr	N J	Collor
Dover District Council	Mr	M	Dawson
Dover District Council	Mr	Mike	Ebbs
Dover District Council	Cllr	W E	Elliott
Dover District Council	Mr	Adrian	Fox
Dover District Council	Cllr	G J	Hood
Dover District Council	Mr	Tim	Ingleton
Dover District Council	Cllr	L H	Knight
Dover District Council	Ms	Michelle	Taylor

Dover District Council	Ms	Michelle	Traylor
Dover District Council	Cllr	R S	Walkden
Dover District Council	Cllr	A C	Willshaw
Dover Harbour Board	Mr	Richard	Christian
Dover Harbour Board	Mr	Howard	Holt
Dover Museum	Mr	P J	Iveson
Dover Parish Council	Mr	Mike	Webb
Down Court Farm	Mr	Kevin	Attwood
Downswood Parish Council	Mrs	Teresa	Irving
DPDS Consultancy Group	Ms	Diane	Bowyer
DRG Bamber Disposals			
Drivers Jonas	Mr		Davies
Drivers Jonas	Mr	Terry	Marteau
Drivers Jonas	Ms	Alison	McCue
Drivers Jonas	Mr	Andre	Pinto
Dungeness A Power Station			
Dunkirk Parish Council	Mrs	E	Dennis
Dunton Green Parish Council	Mrs	Barrie-Anne	Dowling
Dymchurch Parish Council	Mr	P	Leonard
East and West Kent Green Parties			
East Cliff Estates			
East Farleigh Parish Council	Mr	Terry	Ketley
East Kent Chamber of Commerce			
East Kent Coastal PCT	Mr	Geoff	Prince
East Kent Coastal Primary Care Trust	Mr	Mark	Outhwaite
East Kent Coastal Teaching Primary Care Trust	Ms	Caroline	Davis
East Kent Community NHS Trust	Mrs	Mary	Crittenden
East Kent Council for Voluntary Service	Mr	Ian	McEwan
East Kent Green Party	Ms	Emily	Shirley
East Kent Hospitals NHS Trust	Mr	David	Astley
East Kent Primary Care NHS Trusts	Mr	Giles	Bond
East Malling and Larkfield Parish Council	Mrs	V E	Severn
East Malling Trust for Horticultural Research c/o Strutt & Parker	Mr	S	Deakin
East Peckham Parish Council	Mrs	E	Jones
East Sussex County Council	Mr	Matthew	Bartle
East Sussex County Council	Mr	Nick	Claxton
East Sussex County Council	Mr	Nick	Claxton
East Sussex County Council	Mr	Liam	OShea
East Sussex County Council	Mr	A	Robson
East Sutton Parish Council	Ms	Helen	Rimmer
Eastchurch Parish Council	Miss	Marion	Wash
Eastling Parish Council	Mr	Michael	Thomas
Eastry Parish Council	Ms	S	Wells
Easyload Ltd			
Edenbridge Chamber of Commerce	Mr	Peter	Nightingale
Edenbridge Parish Council	Mrs	Christine	Lane
EDF Energy	Mr	Alan	Feakins
EDF ENERGY	MR	T	LAWRENCE
EDF Energy	Mr	John	Park
EDF Energy	Mr	John	Park
Edmonds Gooding Miller	Mr	C R	Edmonds
Egerton Over 60's Club	Mrs	Sheila	Palmer

Egerton Parish Council	Ms	Tessa	Hilder
Egerton WI	Mrs	Shirley	Missing
Elham Parish Council	Mrs	Shirley	Marshall
Elmsted Parish Council	Mrs	Susie	Munn
Eltham Public Transport Users Group (Pastoral Rambling Group)	Mr	R	Clark
Elvetham Heath Developments	Mr		Scregg
Emplan	Mr	Martin	Carpenter
Enfusion	Ms	Barbara	Carrol
English Heritage	Mr	Peter	Kendall
English Heritage	Mr	Steve	Williams
English Heritage SE Region	Mr	Nigel	Barker
English Historic Towns Forum	Mr	Steve	Roper
English Nature	Ms	Teresa	Bennett
English Nature (Kent Team)	Ms	Rebecca	Moberly
English Nature (Kent Team)	Mrs	Sandy	Toy
English Partnerships	Mr	Mike	Appleton
English Partnerships	Ms	Sheila	Cooper
English, Welsh & Scottish Railway	Mr	Allen	Marsden
ENTEC UK	Ms	Kirsty	Harrison
Entergy c/o Barton Willmore	Mr	Paul	Foster
Enterprise Agency for East Kent	Mr	Robert	Pantony
Enterprise Agency for West Kent	Ms	Diana	Porgess
Enterprise Agency of East Kent	Mr	Robert	Pantony
Environment Agency	Mr	Paul	Hoppen
Environment Agency	Ms	Claerwyn	Hughes
Environment Agency	Mr	Barry	Neaves
Environment Agency	Mr	Barrie	Neaves
Environment Agency	Ms	Judith	Seline
Environment Agency	Mr	Paul	Bolas
Environment Agency Southern Region	Ms	P	Chancellor
Environmental Services Association	Mr	Wayne	Laramee
Environmental Services Association	Mr	Stuart	McLanaghan
Environomics Consultants Ltd	Ms	Lillian	Harrison
Environomics Ltd	Mr	M	Davies
Enviros Aspinwall			
Enviros Consulting Ltd			
EON.UK plc	Mr	Martin	Baker
Equal Opportunities Commission			
Erith Haulage Co Ltd	Mr	Steve	Darsey
ERM	Ms	Naomi	Rhodes
Essex County Council	Mr	N	Bell
Essex County Council	Mr	Roy	Lewis
ETC Architects	Mr	Nicholas	Blythe
Eurostar Ltd	Ms	Gina	Slater
Eurotunnel	Mr	Richard	Lavender
Eurotunnel Developments Ltd	Mr	Roy	Griffins
Eurotunnel Developments Ltd	Mr	John	Noulton
Eurotunnel Developments Ltd c/o Rapleys	Mr	Matthew	Walton
Eurotunnel Freight Solutions	Mr	John	Chapman
Evison & Company	Mr	David	Evison
EWS	Mr	Graham	Smith
Eynsford Parish Council	Mrs	M	Hilling

Eythorne Parish Council	Mrs	H	Gower
F D Attwood & Partners	Mr	K	Attwood
F M Conway Ltd			
F Parham Ltd	Mr		Parham
F.J. Malcolm Mair	Mr	Malcolm	Mair
Fairclough Homes Ltd	Mr	Martin	Kelly
Fairclough Homes Ltd	Mr		Marsden
Fairfield Partnership - c/o J B Planning Associates Ltd	Mr	John K	Boyd
Fairseat Residents Association	Mr	R F	Leonard
Fairview New Homes Ltd c/o RPS Plc	Mr	Simon	Slatford
Farming and Rural Conservation Agency	Mr	Neville	Sherlock
Farming and Rural Conservation Agency	Mr	Neville	Sherlock
Farningham McCreddie Partnership	Ms	Joanne	Plant
Farningham Parish Council	Ms	Jane	Gray
Faversham & Mid Kent Constituency Labour Party	Ms	M	Clarke
Faversham & Mid Kent Constituency Labour Party	Mr	B	Hefferun
Faversham Parish Council	Mrs	S	Brockman
Fawkham Parish Council	Mrs	L	Parlett
Federation of Master Builders	Mr	John	Turner
Federation of Small Businesses	Mr	Rex	Goodban
Federation of Small Businesses	Mr	Roger	House
Federation of Small Businesses	Mr	Victor	Webb
Fidelity Investment Services Ltd	Mr	Mark	Sylvain
Fintrade Technologies Ltd	Mr	Paul	Merritt
Fleetstate Ltd & Battleman Ltd c/o Januarys	Ms	Sally	Fletcher
Folkestone & Dover Water Services Ltd	Mr	Ian	McArthy
Folkestone and Dover Water Services Ltd	Mr	Ian	Mcathy
Folkestone Foreshore	Mr	James	Godden
Folkestone Parish Council	Mr	Lawrence	Avory
Fordwich Parish Council	Mr	Geoff	Castle
Foreness Environmental Action	Dr	J M	Guagas
Foreshore Shufflers American Square Dance Club	Mrs	Jean	Barnes
Forest Enterprise			
Forestry Commission	Ms	Jay	Doyle
Forestry Commission	Mr	Jonathan	Harding
Forestry Commission for England			
Forward Planning, Dover District Council (Officers)	Mr	David	Whittington
Foster Yeoman Ltd	Ms	Joanne	Baker
FOX & MANWARING	MR	R	MAYLAM
Fox & Manwaring Chartered Surveyors	Mr	RT	Maylam
FPD Savills	Mr	D	Cramond
Fraserwood Properties c/o Hephher Dixon	Mr	Jonathan	Buckwell
Frederick Harold Lockyer and Graham Peter Brown			
Freight on Rail	Ms	Phillipa	Edmunds
Freight Transport Association	Ms	Natalie	Chapman
Freight Transport Association	Mr	John	Guttridge
Freight Transport Association	Ms	Susan	Moody
Freightliner	Mr	Robert	Goudry
Fridays Ltd	Mr	Malcolm	Friday
Friends of Faversham Creek	Mrs	G	Mussett
Friends of the Earth	Ms	Amanda	Brace
Friends of the Earth	Mr	Charles	Secret
Friends of the Earth (Kent)	Ms	H	Lambert

Friends of the Earth (Maidstone)	Ms	Caroline	Morgan
Friends of the Earth (SE Office)	Ms	Brenda	Pollock
Friends of the Earth (Shepway)	Ms	Rhona	Hodges
Friends of the Earth Canterbury	Ms	Eleanor	Scott
Friends of the Surgeries	Mr	Gerard	Ney
Frindsbury & Wainscott Community Association	Mrs	Anne	Wade
Frinted Parish Council	Mr	John D	Leigh-Pemberton
Frittenden Parish Council	Mrs	Deborah	Jenkins
Future Energy Solutions c/o Terence O'Rourke plc	Mr	Martin	Miller
Future Energy Solutions c/o Terence O'Rourke plc	Mr	Martin	Miller
G H Bromley Haulage	Mr	Pat	Milton
G H BROMLEY HAULAGE LTD	MS	P	MILTON
G M Woodgate & Son			
G R Capita			
G V Smith			
G W Finn & Sons	Mr	D	Potter
Gallagher Aggregates Ltd	Mr	Martin	Hobbs
Gallagher Materials Ltd	Mr	Martin	Hobbs
Gallagher Materials Ltd c/o C F Thurlow	Mr	C	Thurlow
Gallagher UK Ltd			
Ganus Engineering Co Ltd	Mr	A	Porter
GB Railfreight Ltd			
GCL Solicitors	Mr		Laugharne
General Aviation Awareness Council	Mrs	Anna	Bloomfield
General Port Services Ltd			
Geoffrey Whitworth Theatre	Mr	Colin	Yardley
George Hammond	Mr	Brian	Madderson
George Webb & Co	Mr	Robert	Dixon
George Wimpey South London Ltd.	Mr		Brett
George Wimpey Southern Ltd.	Mr		Hill
George Wimpey UK c/o Barton Willmore	Mr	David	Bradley
George Wimpey UK Ltd	Mr	Paul	Garber
George Wimpey UK Ltd	Mr	Peter	Redfern
Gerald Eve	Mr	Mark	Banton
Germans Chartered Surveyors	Miss	GC	Phillipson
GH Bromley Haulage			
Gist Limited	Mr	William	Jamieson
Glaxo SmithKline	Mr	Dell	Caplan
GlaxoSmithKline c/o GVA Grimley	Mr	Richard	Newsome
Gleeson Homes	Mr		Kwan
Gleeson Homes	Mr	Matthew	Tunley
Gleeson Homes c/o Evison & Company	Mr	D J B	Evinson
Global Enviro Tec Services			
GMA Planning	Mr	Sean	McGrath
Goddard Planning Consultancy	Mr	Michael	Goddard
Godmersham Parish Council	Mr	P	Newson
Goodnestone Parish Council	Mrs	Merrilyn	Lee
Goudhurst Parish Council	Mr	A	Farnfield MBE
Gough Planning Services	Mrs	Judy	Gough
GOVERNMENT OFFICE FOR LONDON	MISS	H	KEEN
Government Office for London	Ms	Liz	Meek
Government Office for the South East	Mr	Mark	Bilsborough
Government Office for the South East	Mr	Andy	Cleaver

Government Office for the South East	Mr	Ralph	Dickens
Government Office for the South East	Ms	Claire	Fisher
Government Office For the South East	Mr	Graham	Hanson
Government Office for the South East	Mr	Jim	Palmer
Government Office for the South East	Ms	Maureen	Pullen
Government Office for the South East	Ms	Donna	Smith
Government Office for the South East (GOSE)	Mr	Ed	Manning
Government Office of the South East	Mr	Lee	Sambrook
Government Pipeline and Storage System	Mr	Andrew	Bridge
Graham Simpkin Planning	Mr	Graham	Simpkin
Grantchester Retail Parks PLC c/o Littman & Robeson	Mr	Colin	Burnett
Graveney with Goodnestone Parish Council	Mrs	Sylvia	Philpott
Gravesend Metals & Recycling Ltd			
Gravesham Borough Council	Mr	Rob	Bright
Gravesham Borough Council	Mr	Kevin	Burbidge
Gravesham Borough Council	Cllr	John	Burden
Gravesham Borough Council	Cllr	C W	Caller
Gravesham Borough Council	Mr	A J	Chadwick
Gravesham Borough Council	Mr	Tony	Chadwick
Gravesham Borough Council	Cllr	Raymonde	Collins
Gravesham Borough Council	Mr	Malcolm	Doyle
Gravesham Borough Council	Cllr	W G	Dyke
Gravesham Borough Council	Mr	Norman	Easterbrook
Gravesham Borough Council	Cllr	D J P	Hurley
Gravesham Borough Council	Cllr	M	Singh
Gravesham Borough Council	Mr	Christopher	Woodley
Gravesham Chamber of Commerce	Mr	Graham	Sawell
Gravesham Chamber of Commerce	Mr	Graham	Sawell
GRAVESHAM HIGHWAY UNIT	MR	N	EASTERBROOK
Grayston Alan Durnell	Ms	Jenny	Butler
Great Chart with Singleton Parish Council	Mrs	Tanya	Boorman
Great Mongeham Parish Council	Ms	S	Wells
Greater London Authority	Mr	David	Dash
Greater Manchester PTE	Ms	Lisa	Smith
Greenpeace	Mr	Jason	Torrance
Groundwork Medway Swale	Mr	Simon	Green
Groundwork Thameside	Mr	David	Anstey
Grovehurst Energy Limited			
GST Consulting Ltd	Mr	Sebastian	Tibbles
GTL PROPERTIES LTD	MR	G	LEVER
Guide Dogs for the Blind Association	Mr	David	Grice
Guston Parish Council	Mrs	J	Reed
GVA Grimley	Mr	Neil	Lawrence
GW Finn & Sons	Mr	GW	Finn
H & H Celcon Ltd	Mr	Stuart	Brittle
H + H Celcon c/o C F Thurlow	Mr	Alasdair	Mackenzie
H + H Celcon Ltd c/o Barton Willmore	Mr	Alasdair	Mackenzie
H E Hall & Son c/o JB Planning Assoc Ltd	Mr	John	Boyd
H E Hall & Son Ltd c/o J B Planning Assoc. Ltd	Mr	John	Boyd
H J Banks & Co Ltd	Mr	David	Gosling
H J Banks & Company Ltd	Ms	Erika	Phoenix
H Ripley & Co	Mr	Jason	Ripley
Hackington Parish Council	Mrs	Denise	Horswell

Hadlow College	Ms	Melanie	Fisher
Hadlow Parish Council	Mr	Robert	Hodgson
Hadlow Road Neighbourhood Group	Mr	Peter	Cropper
Halcrow Group Limited	Mr	Mike	Parsons
HALLAM LAND MANAGEMENT	MRS	R	MCKEOWN
Hallam Land Management Ltd	Ms	Ruth	McKeown
Halsted Parish Council	Mrs	Gillian	King-Scott
Hammerson PLC	Mr		Richards
Hammerson plc c/o Littman & Robeson			
Hammerson plc c/o White Young Green	Ms	Alison	Murphy
Hammill Brick Ltd	Mr	Keith	Forbes
Hampshire County Council	Mr	Roger	Lawes
Hands Off Kent	Mr	Alex	Hills
Hankinson Duckett Associates	Ms	Alice	James
Hanson Aggregates (Southern) Ltd	Mr	Bob	Smith
Hanson Building Products	Mr	Steve	Miller
Hanson Quarry Products	Mr	Robin	Willars
Hanson Quarry Products Europe	Mr	Robin	Willars
Hanson Quarry Products Europe Ltd			
Hanson Waste Mangement Ltd			
Harbledown Parish Council	Mrs	Gillian	Jones
Hardeep Consultants	Mr	Hardeep	Ryatt
Hargreaves Residential Developments	Mr		Andrew
Harlequin Ltd	Mr	Martin	Lee
Harrietsham Parish Council	Mrs	Einir	Roberts
Hartley Parish Council	Mrs	Julie	Hoad
Hartlip Parish Council	Mrs	Sara	Bourne
Hastingleigh Parish Council	Mrs	T	Block
Hastings Borough Council	Mr	Robert	Davidson
Havant Construction Co. Ltd	Mr		Porter
Havenworld (KPT) Ltd	Mr	M	Gash
Hawkhurst Parish Council	Mr	A	McTrusty
Hawkinge Parish Council	Mrs	B M	Hardy
Hawkinge Vehicle Services			
Hazeldene Mr and Mrs			
HCC Technical Advice	Mr	Felix	Krish
Headcorn Aerodrome c/o Bloomfields Ltd	Ms	Anna	Bloomfield
Headcorn Parish Council	Mrs	Helen	Anderson
Headcorn Sustainability Group	Dr	Ian	Roberts
Headcorn WI	Mrs	Margaret	Smith
Health & Safety Executive	Ms	Fiona	Brindley
Health & Safety Executive	Mr	Paul	Elliott
HEALTH & SAFETY EXECUTIVE	MRS	L	HOLLINGDALE
Health Protection Agency	Dr	M	Chandrakumar
Health Support Services			
Hegdale Quarry	Mr	D A	Potter
Hempstead Residents Association	Mr	B T	Warner
Hepher Dixon	Ms	Sally	Haynes
Herne and Broomfield Parish Council	Mrs	Monica	Blyth
Herne Bay & District Chamber of Commerce	Mr	Michael	Khoury
Hernhill Parish Council	Mr	T	Smart
Hertfordshire County Council	Mr	Charlie	Watson
Hever Parish Council	Mrs	A	Bellamy

Hewitsons	Mr		Brown
High Halden Parish Council	Ms	Linda	Hedley
High Weald AONB Unit	Sir	Geoffrey	Johnson Smith
High Weald AONB Unit	Ms	Gerry	Sherwin
Higham Parish Council	Mrs	L	Carnall
Highland Investment Co Ltd c/o Michael Parkes Consultancy	Mr	Michael	Parkes
Highways Agency	Mr	Jim	Boud
Highways Agency	Mr	Mike	Ford
HIGHWAYS AGENCY	MR	H	MOORE
Highways Agency	Mr	Howard	Moore
Hildenborough Parish Council	Ms	Sarah	Blackmore
Hillier Estates	Mr	Andrew	Hillier
Hillreed Developments c/o David Hicken Associates	Mr	Philip J	Aelen
Hillreed Homes	Mr	A	Hume
Hillreed Homes Ltd	Mr	AJ	Hillier
Hillreed Homes Ltd c/o Chris Blandford Associates	Mr	Geoff	Smith
Hillreed Homes Ltd.	Mr	Stephen	Pilkington
Hillreed Homes	Mr	A	Hume
HJ BANKS & CO LTD	MR	D	GOSLING
HM Prison Service c/o Paul Dickinson Associates	Mr	P	Dickinson
HMP Elmley	Mr	Brian	Pollett
Hoath Parish Council	Mrs	Colette	Coleman
Hobbs Parker	Mr	Simon	Mole
Hobbs Parker	Mr	Jonathan	Rimmer
Hobourn Automotive	Mr	David	Kidd
Hochtief (UK) Construction Ltd			
Hogarth Tyre Shredders Ltd			
Hollingbourne Parish Council	Mrs	Beccy	Stroud
Hollybourne Developments Ltd	Mr		Bailey
Honeygrove Properties Ltd	Mr		Rivers
Horsmonden Parish Council	Mrs	L	Noakes
Horton Kirby and South Darenth Parish Council	Mrs	C	Allart
Hothfield Parish Council	Mrs	Judith	Batt
Hougham Without Parish Council	Mr	Paul	Sherman
House Builders Federation	Miss		Done
House Builders Federation	Mr	Andrew	Whittaker
House Builders Federation (Southern Region)	Mr	Pete	Errington
House of Commons	Mr	Paul	Clark
House of Commons	Mr	Hugh	Robertson
Housing Corporation Southern Region	Ms	Heather	Juman
Hoverspeed Ltd	Mr	Trevor	Bond
Hoverspeed Ltd	Mr	Geoffrey	Ede
Howard Hutton & Associates	Mr	Roger	Hutton
Hucking Parish Council	Mrs	K	Parks
Hunton Parish Council	Mr	D	Swan
Hurstway Construction Company Ltd	Mr	Chris	Ditton
Hyde Housing Association	Mr	Ian	Hagger
Hythe Parish Council	Ms	J	McCormick
Hythe Plant Services			
I C S Estates Ltd.	Mr		Vaughan
Ibstock Brick Ltd c/o DTZ Pieda Consulting	Ms	Nikki	Neophytou
Ibstock Building Products Ltd	Mr	Simon	Green

Ibstock Building Products Ltd/Ibstock Brick	Mr	Stephen	Hardy
Ickham and Well Parish Council	Mr	P	Hodge
Ightham Parish Council	Miss	Ruth	Morris
Ightham Sandpits Ltd	Ms	Glenys	Baker
Imperial College	Mr	Hadrian	Cook
Imperial College London	Prof	Jeff	Waage
Imperial College of Science Technology & Medicine	Mr	N	Buck
INDEPENDENT ACCESS MATTERS	MRS	F	MONTFORD
Individual	Mr	Alf	Archer
Individual	Mr	Colin	Finch
Individual	Cllr	Ken	Gregory
Individual			Not supplied
Ingrebourne Valley Ltd	Mr	D	Parrack
Institute of Directors			
Integrated Transport Project/Kent Ambulance NHS Trust	Mr	Mark	Heverin
Inter City Trucks Ltd	Mr	John	Faulkner
Intier Automotive Interiors Ltd	Mr	Eddie	Penfold
Inventures (NHS Estates)	Mr	Stephen	Harness
Invicta Grammar School	Mrs	Sue	Glanville
Invicta Paints			
IPS International Ltd	Mr	R	Cowen
Isle of Wight Council	Ms	Wendy	Perera
Isle of Wight Council	Mr	Chris	Wells
Ivychurch Parish Council	Mr	Douglas M	Suckling
Iwade Parish Council	Mrs	Sarah	George
J & B Martin (Crayford & Fawkham) Ltd			
J A Berry			
J Bourne and Co Limited			
J C Autobreakers			
J Clubb Ltd	Mr	J J	Lovett
J Clubb Ltd			
J J Williamson & Sons Ltd			
J M Preston & MHP Partnership c/o Walker Stuart	Mr	Paul	Bradley-Lloyd
J Taylor & Son	Mr	M	Taylor
J.A. Pye Ltd	Mr		Coates
J.T.Gibb & Co Ltd	Mr		Webb
Jacobs Babtie	Ms	Sandra	Watkins
Jayflex Restoration Ltd			
Jenner Plant Hire Co Ltd			
Jennifer Owen Associates	Ms	Jennifer	Owen
Jessup's (Lime Products) Ltd			
JJ Gallagher Ltd.	Mr		Blincoe
Jobcentre Plus	Ms	Lynn	Coveney
Jobcentre Plus	Mr	Mike	Ellett
Jobcentre Plus	Mr	Richard	Ireland
John Bourne & Co Ltd	Mr	Peter	Bourne
John Lewis	Mr	Noel	Saunders
John Moore	Mr	John	Moore
John Parker & Son Ltd	Mr	Guy	Parker
John Slattery Partnership			
John Starkey & Co	Mr	Mark	Newman
Jones Homes (Southern) Ltd.			

Joyce & Partners Ltd	Mr	E	Byrne
Joyden's Wood Support Group	Mr	Ian	Hammerton
JR Huggins			
JTS Partnership	Mr	David	Brazier
Judith Norris Ltd	Ms	Judith	Norris
K & M Grant Ltd	Mr		Grant
K N Wilson Plant Hire			
KCC	CLLR	A	POOLE
KCC - Strategic Planning	Ms	Marie	Dancourt-Cavanagh
KCC WMU			
Keith Funnell Associates			
Kember Loudon Williams	Ms	Julliet	Billingham
Kemsing Parish Council	Mrs	Yolanda	Tredoux
Kemsley Mill			
Kenardington Parish Council	Mrs	M C	Shaw
Kennington House Group	Mrs	Susan	Woollett
Kent & Canterbury Hospital NHS Trust	Mr	Peter	Hermitage
Kent & Canterbury NHS Trust	Mr	George	Jenkins
Kent & Canterbury NHS Trust	Ms	Patricia	Shepherd
Kent & Medway Economic Board	Ms	Denise	Eden-Green
Kent & Medway Strategic Health Authority	Ms	C	Morris
Kent Access Forum	Mrs	Janice	Greenwood
Kent Aggregates Ltd			
Kent Ambulance NHS Trust	Mr	Hayden	Newton
Kent Ambulance NHS Trust	Mr	Peter	Platt
Kent Ambulance NHS Trust	Mr	Ken	Smith
Kent and Medway Strategic Health Authority	Mr	Mike	Daly
Kent Archaeological Society	Mr	David	Bacchus
Kent Area Rambler's Association	Ms	Jean	Bomber
KENT ASSOC OF P. C. DARTFORD AND AREA CTTE	MRS	M	SALWAY
Kent Association for the Blind	Mr	Les	Ellis
Kent Association for the Blind	Ms	Brenda	Kelsall
Kent Association for the Disabled	Ms	Susan	Russell
Kent Association of Parish Councils	Cllr	Clive	English
Kent Chamber of Commerce	Mr	Michael	Pead
Kent Community Rail Partnership	Mr	Peter	Chegwidden
Kent Community Recycling	Mr	Mark	Wyatt
Kent Conservation Officers Group	Mr	Peter	Bell
Kent Conservation Officers Group	Mr	David	Kincaid
Kent Conservation Officers Group	Mr	Edward	Sargent
Kent Conservation Officers Group (Ragstone Working Party)	Mr	Edward	Sargent
Kent Conservative Group			
Kent County Agricultural Society	Mr	Michael	Foreman
Kent County Constabulary	Insp	D	Sameways
Kent County Constabulary (Traffic Police)	Mr	D	Cartwright
KENT COUNTY COUNCIL	MRS	C	ARNOLD
KENT COUNTY COUNCIL	MR	N	CHARD
KENT COUNTY COUNCIL	MRS	T	DEAN
KENT COUNTY COUNCIL	MR	M	FITTOCK
KENT COUNTY COUNCIL	MR	G	KOOWAREE
KENT COUNTY COUNCIL	MR	D	OXLADE

Kent County Council Liberal Democrat Group			
Kent County Labour Party	Mr	Nick	Turner
Kent Developers Group	Mr	David C	Brooks-Wilson
Kent Developers Group	Mr	David	Dye
Kent Downs AONB	Ms	Frances	Clayton
Kent Downs AONB Office	Ms	Stella	Bandu
Kent Enviropower	Mr	P	Andrews
Kent Event And Exhibition Centre	Mr	Jonathan	Day
Kent Farming & Wildlife Advisory Group	Mr	Phillip	Merricks
Kent Federation of Amenity Societies	Mr	Bill	Ratcliffe
Kent Federation of Amenity Societies	Mr	A	Woolford
Kent Federation of Amenity Societies	Mr	A	Woolford MA
Kent Federation of Amenity Societies	Mr	Peter	York
Kent Fire Brigade	Mr	P	Austin
Kent Institute of Art & Design	Prof	Vaughan	Grylls
Kent Invicta Chamber of Commerce	Mr	Chris Capron	Chris Capron
Kent Invicta Chamber of Commerce	Mr	Alistair	Moore
Kent Magistrates Justices	Mr	Chris	Hunter
Kent Maritime Chamber of Commerce	Miss	Rosalynd	Friend
Kent Maritime Chamber of Commerce	Mrs	Anne	Peeks
Kent Maritime Chamber of Commerce	Mrs	Anne	Peeks
Kent Maritime Chamber of Commerce (Canterbury Branch)			
Kent Maritime Chamber of Commerce (Swale Branch)			
Kent Messenger	Mr	David	Lewis
Kent Ornithological Society	Mr	Rodney	Smith
Kent Partnership	Mr	Trevor	Minter
Kent Planning	Mr	Mike	Simmonds
Kent Police	Mr		Burr
Kent Police	Ms	Janine	Coomber
Kent Police	Mr	Jerry	Duncan
Kent Police	Insp	Mark	Flight
Kent Police	Superintendent	Alan	Horton
Kent Police	Ch Supt	Janet	Stephens
Kent Police c/o David Hicken Associates	Mr	John	Collins
Kent Police Roads Policing Section	Sgt	Colin	Green
Kent Probation Area	Ms	Christine	Lawrie
Kent Probation Area	Ms	Christine	Lawrie
Kent Ragstone Committee	Mr	Paul	South
Kent Rural Community Council	Mr	Crispin	Davies
Kent Rural Community Council	Mr	Crispin	Davies
Kent Showmans Guild of Great Britain	Mr	Keith	Miller
Kent Thameside	Mr	Ben	Simson
Kent Thameside Association	Mr	David	George
Kent Thameside Association	Mr	Ian	Lindsay
Kent Thameside Association	Mr	D	Nessling
KENT THAMESIDE DELIVERY BOARD	MR	I	LINDSAY
KENT THAMESIDE DELIVERY BOARD	MR	P	WILLIAMS
Kent Wildlife Trust	Mr	Richard	Moyse
Kent Windfarms Ltd	Mr	Alan	Bullock
Kent Youth Theatre	Ms	Angela	Puhalo
Kentish Stour Countryside Project	Mr	Jason	Adams

Kerb 2 Kerb	Ms	Jane	Frankland
Ketlon Ltd	Mr	Paul	Cahill
Keycol Hill Residents Association	Mr	Lawrence	Major
KFAS	MR	C	YORK
Kier Property c/o Littman & Robeson	Ms	Caroline	Dawson
Kierland Limited	Mr	Guy	Peirson-Hagger
Kimberley Developments plc c/o Lynne Evans	Ms	Lynne	Evans
Kingerlee Ltd	Mr		Kingerlee
Kings Hill Parish Council	Ms	Jill	Hodgson
Kings Hill Riding School	Mr	J N	McNeil
Kings Oak Southampton	Mr		Austin
Kingsnorth Parish Council	Miss	J J	Mills
Kingston Parish Council	Mrs	Valerie	McWilliams
Kingsway Group plc	Mr	A J	Farquharson
Kitewood Estates	Mr	Paul	Watkins
KLW Consultants	Mr	J	Williams
Knauf UK Ltd	Mr	Barry	Topple
Knockholt Parish Council	Mrs	D	Jones
KPMG	Mr	P	Hardaker
KTI Energy Ltd	Dr	Bill	Temple-Pediani
KTI ENERGY LTD	DR	R	TEMPLE-PEDIANI
L.M. Coffey			
Lacey Simmons Ltd.	Mr		Spinks
Lafarge Aggregates Ltd	Mr	M J	Pendock
Lafarge Aggregates Ltd	Mr	Duncan	Wardrop
Lafarge Aggregates Ltd	Mr	Keith	Wharmby
Lafarge Cement UK	Mr	David	Simms
Lafarge Cement UK c/o David Lock Associates	Mr	Arwel	Owen
Laing Homes Ltd c/o George Wimpey Strategic Land	Mr	P	Thomas
Laing Homes South East Thames	Mr		Weeks
Lamberhurst Parish Council	Mr	William	Frazer
Lancashire County Council	Mr	Graham	Harding
Lancashire County Council			
Land and Business Association	Mr	John	Biron
Land and Mineral Management Ltd	Mr	Robin	Lane
Land Securities	Mr	Neil	McNevin
Land Securities	Mr	Martin	Scholar
Land Securities c/o Barton Willmore	Mr	Stephen	Hill
Land Securities c/o David Lock Associates	Mr	Arwel	Owen
Land Securities c/o Level Consulting	Ms	Claire	Williams
Land Securities c/o Peter Brett Associates	Mr	Keith	Mitchell
Land Securities Development	Mr	Francis	Allway
Land Securities Development	Mr	Adam	Cunnington
Landmark Information Group Ltd	Mr	Joe	Glancy
Langdon Parish Council	Ms	Gill	Riggs
Langley Parish Council	Mr	Terry	Ketley
Langton & Nackington Residents Association	Mr	John	Hiscott
LaSalle Investments	Mr	Andrew	Bull
Laytons Solicitors	Mr		Watson
LE CROSSING CO LTD	MR	A	TAYAB
Le Crossing Company Ltd	Mr	John	Cheese
Learning & Skills Council	Mr	Tony	Leaver
Learning and Skills Council	Mr	Simon	Norton

Lee Evans Partnership	Mr	David	Stewart
Leeds Parish Council	Ms	Sherrie	Babington
Legal & General c/o Drivers Jonas	Mr	Oliver	Sheppard
Leigh Parish Council	Mrs	C	Phillips
Lend Lease	Mr	Tim	Hooker
Lend Lease c/o Drivers Jonas	Mr	Michael	Davies
Lend Lease Projects Ltd	Mr	A	Chisholm
Lenham Archaeological Society	Mr	Lesley	Feakes
Lenham Parish Council	Mrs	Pat	Sutton
Letley Group F.A. c/o Courtley Consultants Ltd	Mr		Courtley
Leybourne Parish Council	Mrs	Helen	Rimmer
Leysdown Parish Council	Mr	David	Purrsford (Chairman)
Linden Holdings PLC	Mr		Bull
Linton Parish Council	Mr	M	Stevens
Little Chart Parish Council	Mrs	C J	Byles
Little Stour & Nailbourne River Mgmt Group	Mr	Tony	Austin
Littlebourne Parish Council	Mr	Anthony	Wright
Littman & Robeson	Ms	Peggy	Hui
Littman & Robeson	Mr	Martin	Robeson
Living Streets	Mr	David	Early
Living Streets	Mr	Ben	Plowden
Lloyds TSB Bank plc	Mr	Mark	Clenshaw
Local Government Association	Mr	Sam	Richards
Locate in Kent	Ms	Mandy	Bearne
Locate in Kent	Mr	Paul	Wookey
London & Continental Railways	Mr	Stephen	Jordan
London & Kent Metals			
London Ashford Airport (Lydd Airport) c/o Parsons Brinckerhoff	Ms	Rachel	Bass
London Ashford Airport Ltd	Mr	Robin	Gordon
London Borough of Bexley			
London Borough of Bromley	Mr	Adrian	Bell
London Borough of Bromley	Mr	Alan	Lucking
London Borough of Bromley	Mr	Stuart	McMillan
London Chamber of Commerce & Industry	Mr	Simon	Sperryn
London Coaches (Kent) Ltd	Mr	Graham	Wykes
London Green Belt Council	Mr	L G	Holt
London Rivers Association	Mr	Ian	Munt
London Transport Buses Ltd	Mr	Peter	Bradley
Longfield and New Barn Parish Council	Mrs	T	Taylor
Loose Parish Council	Mrs	J	Capon
Lovell Partnerships	Mr		Atherden
Lower Halstow Parish Council	Mrs	Jolene	Jones
Lower Hardres Parish Council	Mrs	Susan	Shaw
Lucas Land & Planning	Mr	Stephen	Lucas
Luddenham Parish Council	Mr	Peter	Andrews
Luddesdown Parish Council	Mrs	C A	Griffiths
Lydd Action Group	Mr	Thomas	Smith
Lydd Airport c/o RPS	Ms	Ruth	Diggle
Lydd Airport Group Ltd	Mr	John	Davis
Lydd Airport Group Ltd	Mr	Robin D	Gordan
Lydd Car Breakers			
Lydd Parish Council	Mrs	M	Weaver

Lydden Parish Council	Mrs	G	Howes
Lyminge Parish Council	Ms	Jenny	Maxted
Lympne Parish Council	Mrs	A E	Goodwin
Lynsted Parish Council	Ms	J	Bradwell
M - Real New Thames Ltd	Mr	Juha	Verajankorva
M S Campion			
Maidstone & Tunbridge Wells NHS Trust	Ms	Ann	Chapman
Maidstone & Tunbridge Wells NHS Trust	Mr	Stephen	Collinson
Maidstone & Tunbridge Wells NHS Trust c/o Montagu Evans	Ms	Lynne	Evans
Maidstone and Mid Kent Chamber of Commerce	Mr	Jim	Thompson
Maidstone and the Weald CLP	Mr	P F	Coates
Maidstone BC Liberal Democrat Group	Cllr	Mervyn	Warner
Maidstone Borough Council	Cllr	Richard	Ash
Maidstone Borough Council	Mr	Jim	Boot
Maidstone Borough Council	Cllr	Frances	Brown
Maidstone Borough Council	Mr	Clive	Cheeseman
Maidstone Borough Council	Cllr	Clive	English
Maidstone Borough Council	Cllr	Chris	Garland
Maidstone Borough Council	Mr	Trevor	Gasson
Maidstone Borough Council	Mr	Steve	Goulette
Maidstone Borough Council	Mr	Jamie	Hare
Maidstone Borough Council	Mr	Adrian	Hygate
Maidstone Borough Council	Cllr	Hugh	Laing
Maidstone Borough Council	Mr	Brian	Morgan
Maidstone Borough Council	Cllr	Brian	Moss
Maidstone Borough Council	Cllr	Peter	Parvin
Maidstone Borough Council	Mr	David	Petford
Maidstone Borough Council	Cllr	Malcolm	Robertson
Maidstone Borough Council	Mr	Steve	Scott-Brown
Maidstone Borough Council	Cllr	Ken	Stevens
Maidstone Borough Council	Mr	Michael	Thornton
Maidstone Borough Council	Cllr	Fred	Winckless
Maidstone Enterprise Agency	Mr	G	McCue
Maidstone Gospel Hall Trust	Mr	Alastair	Bell
Maidstone Paper Savers	Mr	Tony	Richardson
Maidstone Town Centre Management Initiative	Mr	David	Spink
Maidstone Urban Forum	Ms	Jenny	Watts
Makro c/o Lambert Smith Hampton	Mr	Mike	Hopkins
Malcolm Judd & Partners	Mr	Malcolm	Judd
Mallard Fencing Club	Dr	Richard	Phillips
Maltman's Hill, Smarden	Mrs	J	Buss
Manston Parish Council	Ms	Audrey	Twyman
Mapledean Developments Ltd.	Mr		Adams
Marden Parish Council	Mrs	Alison	Hooker
Marden Society	Mr	Richard	Adam
Margate Town Partnership	Ms	Jane	Kennard
Marks & Spencer Plc c/o Nathaniel Litchfield & Partners	Ms	J	Hill
Marley Floors Ltd	Mr	Chris	Holmes
Marley Properties Ltd			
Marley Properties Ltd c/o RPS	Ms	Sarah	Adams
Mason Richards Planning	Ms	C	McDougall

Massey Construction Ltd	Mr		Massey
Matthew & Son	Mr	D	Thadius
Matthew Homes	Mr		Jones
Mayer Parry Recycling Ltd			
McAlpine	Mr		Kelly
McCarthy & Stone (Developments) Ltd	Mr		Gillingham
McCarthy & Stone Developments Ltd	Mr	R	Munro
MCCH Society Ltd	Ms	Pauline	Preece
McLean Homes South Eastern Ltd	Mr	DA	Rose
MED Management Ltd			
Medcentres PLC	Mr		Coatham
Medway Chamber of Commerce	Ms	Tracey	Manley
Medway City Council - Integrated Transport	Ms	Amanda	Hopkins
Medway Council	Ms	Judith	Armitt
Medway Council	Ms	Jane	Chitty
Medway Council	Mr	Phil	Filmer
Medway Council	Mr	Bryan	Geake
Medway Council	Mr	Martin	Hall
Medway Council	Mr	Steve	Hewlett
Medway Council	Cllr	R	Hunter
Medway Council	Mr	Brian	McCutcheon
Medway Council	Dr	Richard	Simmons
Medway Countryside Forum	Mr	David	Murr
Medway Enterprise Centre	Mrs	Sue	MacKinnon
Medway Gap Action Group	Mr	John	Coomber
Medway NHS Trust	Mr	D	Baxter
Medway NHS Trust	Mr	A	Clayton
Medway Pensioners Forum	Mr	Ralph	Tebbutt
Medway Ports	Mr	Des	Crampton
Medway Ports	Mr	Brent	Stephen
Medway Ports	Mr	Richard	Thornby
Medway Transport Forum	Mr	John	Keene
Medway Weald NHS	Ms	Lynne	Selman
Meopham & District Bridleways Association	Ms	Lynda	Maxwell
Meopham Parish Council	Mr	Peter	Tennyson
Mereworth Parish Council	Mrs	Christine	Darbyshir
Meridian Waste Management			
Mersey Docks & Harbour Company c/o Nathaniel Litchfield & Partners	Mr	Peter	Wilks
Mersham with Sevington Parish Council	Miss	J J	Mills
Messers HF & JH Glover			
Metropolitan Police Authority c/o CGMS	Mr	Matthew	Roe
mhs homes	Mr	John	Sands
Michael Dakers LMRTPI	Mr	Michael	Dakers
Mid Kent College	Mr	John	Levett
Mid Kent College c/o John Sharkey & Co	Mr	John	Sharkey
Mid Kent Healthcare Trust	Mr	Bill	Snow
Mid Kent Healthcare Trust			
Mid Kent Water	Mr	Paul	Butler
Mid Kent Water	Mr	J	Thatcher
Mid Kent Water Ltd	Mr	Lee	Dance
Mid Kent Water plc c/o David Hicken Associates	Mr	Philip J	Aelen
Miller Homes Ltd.	Mr		Ferrans

Millwood Designer Homes	Mr	Jeff	Elliot
Milstead and Kingsdown Parish Council	Ms	Lena	Jordan
Milton Keynes Council	Mr	John	Harper
Mineral/Waste Mgt Group	Mr	Robert	Malpin
MINISTRY OF DEFENCE		Sir/Madam	DEPUTY CHIEF OF STAFF
Ministry of Defence			
Minster Parish Council	Ms	Kyla	Lamb
Minster-on-Sea Parish Council			
MKH Clokes Surveyors Ltd	Ms	Pam	Przyjemski
Moat Housing Society Ltd	Mr	Ian	Beckett
Mobile Operators Association c/o Mono Consultants Ltd			
Molash Parish Council	Mr	Ian	Simms
Monks Horton Parish Council	Mr	R	Clarke
Monkton Parish Council	Ms	Gilly	Brown
More to Medway	Ms	Claire	Lynn
Moto Hospitality Ltd c/o Atis Real Wetheralls	Mr	Ian	Coward
Mountgrange (Maidstone) Ltd c/o Firstplan	Ms	Vilna	Walsh
Mr GW Barten			
Mr John Pearce			
Mr M F M Day c/o Pro Vision	Mr	James	Cleary
MSH Skip Hire			
Murray Preston	Mr	Murray	Preston
Muslim Association	Mr	Mahmood	Usman
Mustard Group Ltd	Mr	Richard	Romain
NAI Gooch Webster	Mr	Roy	Dunn
Nathaniel Lichfield & Partners	Ms	Jenny	Hainsworth
Nathaniel Lichfield & Partners	Ms	Marie	Nagy
National Association of Bus Users	Mr	R	Brewer
National Council of Women of GB	Ms	Margaret	Field
National Council of Women of Great Britain	Mrs	Mary	Fagg
National Express Coaches	Mr		Lambden
National Farmers Union (SE Region)	Mr	John	Archer
National Farmers' Union	Mr	Shaun	Leavey
National Federation of Bus Users	Dr	Caroline	Cahm
National Federation of Demolition Contractors			
National Federation of the Blind of the UK	Mr	James	Liard
National Federation of Women's Groups	Ms	J	Osborne
National Grid Co Plc			
National Grid Company Plc	Mr	Kevin	Hylands
National Grid Transco Plc			
National House Building Council	Mr		Parker
National Housing Federation (South East)	Ms	Sharon	Hedges
NATIONAL PLAYING FIELDS ASSOCIATION	MR	R	COLE
National Playing Fields Association			
National Power			
National Trust	Mr	Gary	Churchill
National Trust	Ms	Maggie	Morgan
National Trust (SE Region)	Ms	Jane	Arnott
National Westminster Bank plc	Mr		Collins
National Westminster Bank plc	Mr		Dowden
NECESSARY FURNITURE	MR	R	CAPLAN

Necessary Furniture			
Nettlestead Parish Council	Mrs	A	Watson
Network Rail	Mr	Richard	Talbot
Network Rail Ltd	Mr	Chris	Price
New Ash Green, Woodlands Group	Mr	Jerry	Ash
New Earth Solutions Ltd	Mr	T	Bleszynski
New Romney Parish Council	Mrs	V	Tully
New Romney Town Council	Mrs	V	Tully
Newchurch Parish Council	Mrs	Janis	Day
Newenden Parish Council	Ms	Gill	Adey
Newington Parish Council	Mr	Richard	Hobson
Newington Parish Council	Miss	J	Baker
Newnham Parish Council	Mr	Terry	Stiles
NHBC	Mr		Lyons
Nick Robinson Homes Ltd.	Mr		Robinson
Nickolls Quarries Ltd	Mr	J W	Nickolls
Nickolls Quarries Ltd c/o BSF Planning Consultants	Mr	David	Jarman
Nonington Parish Council	Mrs	Linda	Player
Norfolk County Council	Mr	J	Shaw
North Kent Chamber of Commerce	Mr	Michael	Pead
North Kent Chamber of Commerce	Mr	Denis	Sanders
North West Kent College	Mr	Malcolm	Bell
North West Kent Interfaith Council	Dr	Surinder	Singh
Northamptonshire County Council	Mr	M	Bordiss
Northbourne Parish Council	Ms	Teresa	Barnwell
Norton, Buckland and Stone Parish Council	Mrs	Louise	Mendham
Not supplied	Mr	Ed	Thomas
Nottinghamshire County Council	Mr	Neil	Hodgson
Npower Renewables Ltd (NPR)	Mr	John	Ainslie
Oare Parish Council	Cllr	Michael J	Real
Oaten Hill & District Society	Mr	William	Burnett
Oaten Hill & District Society	Mr	Michael	Steed
Offham Car Breakers			
Offham Parish Council	Ms	Helen	Munro
Office of Government Commerce			
Office of the Deputy Prime Minister	Mr	Ralph	Ward
Office of the Deputy Prime Minister			
O'Keefe Construction Ltd			
Old Road Securities Plc (ORS)	Ms	Kate	Sylvester-Kilroy
Old Romney Parish Council	Mr	W G	Gibbons
OLLEY (WROTHAM) LTD	MR	G	MCCARTHY
Olley (Wrotham) Ltd c/o CF Thurlow	Mr	C F	Thurlow
Orbit Housing Association	Mr	Samual	Adifison
Orbital Marketing Services Group Ltd	Mr	Philip	Talbot
Orchard Homes & Developments Ltd	Mr		Lewis
Orchard Pet Cemetery Ltd			
Orlestone Parish Council	Ms	Emily	Neighbour
ORS plc	Mr	Paul	Doyle
Ospringe Parish Council	Mr	Andrew	Keel (Chairman)
Otford Parish Council	Mrs	B	Darby
Otham Parish Council	Mrs	Teresa	Irving
Otterden Estates c/o Carter Jonas			
Otterden Parish Council	Mr	G H	Wheeler

Oxfordshire County Council	Mr	Chris	Cousins
OXFORDSHIRE COUNTY COUNCIL	MR	P	DAY
Oxfordshire County Council	Mr	Peter	Day
Oxfordshire County Council	Mr	Roger	ONEILL
P & O Ferries	Mr	Russ	Peters
P Gallagher Contractors Ltd			
P&O Ferries	Mr	Chris	Ainsley
P&O Ferries	Mr	Peter	Alexander
P&R Construction Consultants Ltd c/o Planning First	Mr	Stephen	Partington
PACE (People Against Canterbury Expansion)	Dr	Goeff	Meaden
Paddlesworth Parish Council	Mr	A R	Biggart
Paddock Wood Car Breakers Ltd			
Paddock Wood Parish Council	Ms	Nichola	Reay
Palmer & Harvey Snowking Ltd	Mr	Graham	McPherson
Parker Dann Planning Consultants			
Pathfinders 11-14yrs group St George's	Mrs	Penny	Clay
PAUL SHARPE ASSOCIATES	MR	P	SHARPE
Peak Quality Homes Ltd.	Mr		Anderson
Pearsons Ballast Ltd	Mr	R	Lane
Pearsons Ballast Ltd	Mr	G P	McCarthy
Peer Spanner Associates			
Pegasus Retirement Homes Plc.	Mrs		Maisey
Pelham Homes Ltd	Mr	Neil	Warren
Pellings	Mr	James	Sharp
Pembury Parish Council	Mrs	B S	Russell
Penshurst Parish Council	Mrs	E	Divall
Pentland Homes c/o BSF Planning Consultants	Ms	Jeanne	Taylor
PEOPLE AGAINST CANTERBURY EXPANSION (PACE)	DR	G	MEADEN
Persimmon Homes (SE) c/o Anna Bloomfield	Ms	Anna	Bloomfield
Persimmon Homes (South East) Ltd	Mr		Court
Persimmon Homes Ltd	Mr	P	Court
Personnel Hygiene Services Ltd			
Peter Brett Associates	Mr	G	Callaghan
Peter Brett Associates	Mr	Mark	Hammersley
Peter Downs	Mr	P	Downs
Peter Jackson Architects	Mr	Peter	Jackson
Peterhouse Cambridge c/o Carter Jonas			
Petham Parish Council	Mrs	Susan	Shaw
Pets Country Crematorium	Mr	Bob	Tomlins
Pfizer Ltd	Mr	Nick	Clark
Pfizer Ltd	Mr	James	Graham
Pfizer Ltd c/o Halcrow	Mr	Chris	Watts
PFIZER LTD C/O THE HALCROW GROUP	MR	C	WATTS
Phides Estates & George Wimpey UK Ltd c/o Chancellors	Mr	Jeremy	Woolf
Pilgrims Folk Dance Club	Mr	G	Haythornthwaite
Pinden Ltd	Mr	Gary	East
Pinden Plant & Processing Ltd			
Piper Farms	Mr	M	Piper
Pitmans Solicitors	Mr		Avery
Planestation	Mr	Paul	Tipple
PlaneStation (formerly Wiggins Group)	Mr	Tony	Freudman

PlaneStation (formerly Wiggins Group)	Mr	Andrew	White
Planning Perspectives	Mr	Tim	Waters
Platt Parish Council	Mrs	J	Davies
Plaxtol Parish Council	Mrs	M J	Burgess
Pluckley Parish Council	Cllr Mrs	Jackie	Grebbly
Pluckley PCC	Mr	Peter	Campbell
Port Lympne Wild Animal Park			
Port of Dover	Mrs	S	Higenbottam
Port of London Authority	Mr	Neil	McClellan
Port of London Authority	Mr	Jim	Trimmer
Port of London Authority	Mr	James	Trimmer
Port of Sheerness Limited			
Portsmouth City Council	Mr	Paul	Denyer
Postling Parish Council	Mr	Robert	Prince
Pounsley Road Residents Ltd	Mr	Derek	Brown
Powergen	Mr	Mark	Draper
PP Kennedy and Donkin Ltd	Mr	James	Perkins
PRC Planning	Mr		Welsh
Premier Properties Plc	Mr		Jelley
Preston Parish Council	Mr	Richard	Barton
Prowting Homes	Mr	M	Williams
Prowting Projects & Bryant Strategic Projects c/o RPS	Mr	Nigel	Moor
Prudential Assurance Co Ltd & Shell Pension Fund c/o Drivers Jonas	Ms	Sarah	Stevens
QinetiQ c/o GVA Grimley	Mr	G V A	Grimley
QPC Homes	Mr		Markinson
Quarry Hill Residents Association	Mr	Alan	Radcliffe
Quarry Products Association	Mr	M J	Courts
Quarry Products Association	Miss	Nienke	Veldkamp
QUARRY PRODUCTS ASSOCIATION LTD	MISS	N	VELDKAMP
Queenborough Parish Council	Mr	John	Clarke
QUEENBOROUGH TOWN COUNCIL		Sir/Madam	TOWN CLERK
Quest International Ltd	Mr	Jean	Pierre Hour
Quest International UK Ltd	Mr	Jean-Pierre	Hour
R Brett & Sons Ltd	Mr	Mike	Courts
R Durnell & Sons Ltd	Mr	Jim	Chandler
R H Ovenden Ltd	Mr	R H	Ovenden
R M Construction / Kumor Nursery	Mr	R	Follett
R Marchant & Sons Ltd	Mr	R	Marchant
R Merrick Burrell & Ptrs Ltd	Mr		Burrell
R Rumble Demolition Ltd			
Race Equality Council	Mr	John	Price
RADAR	Mr	Alan	Francis
Rail Passengers' Committee	Mr	M	Hewitson
Rail Passengers Committee Southern England	Mr	Chris	Fribbens
Rail Passengers Committee Southern England	Ms	Anne	Kensall
Rail Passengers Committee Southern England	Mr	Tim	Nicholson
Rail Passengers Committee Southern England	Mr	Peter	Porter
Rail Passengers Committee Southern England	Ms	Elizabeth	Stallibrau
Rail Passengers Committee Southern England	Ms	Jennifer	Teague-Harley
Railtrack (Property Services)	Ms	Noreen	Banks
Rainham Gillingham & Chatham Amenity Society	Mrs	V	Hodges
Ralph & Evans	Ms	Anita	Ralph

Ramac Holdings Ltd c/o Broadlands	Mr	Paul	carter
Ramblers	Mr	B	Lowry
Ramblers Association	Mr		Collins
Ramblers Association	Mr	Michael	Collins
RAMBLERS ASSOCIATION	MS	E	STRAIGHT
Ramblers Association (Ashford Group)	Mr	Peter	Whitestone
Ramblers Association Swale West & Sheppey	Mrs	Elsie	Straight
Ramsgate New Port	Mr	R	Cooper
Ramsgate New Port	Mr	Peter	Goulding
Ramsgate Port Authority	Captain	Ken	Gray
Ramsgate Town Partnership	Mrs	Pym	Brewer
Raymonds Salon	Ms	Kay	Wyatt
Reading Borough Council	Mr		Hurdus
Recycling Waste Management Ltd			
Redland Roofing System Ltd	Mr	R C	Ash
Redleaf Estate Trust	Mr	P	Hills
Redleaf Estate Trust c/o Halletec Associates Ltd	Mr	Andrew	Carp
Redrow Homes (Eastern) Ltd	Mr	George	Cronin
Redrow Homes (Eastern) Ltd c/o Vincent & Gorbing	Mr	Richard	Lewis
Redrow Homes (SE) Ltd	Mr	G	Keer
Redrow Homes (south east) Ltd	Mr		Marshalsay
Redrow Homes (Southern) Ltd.	Mr		Simmons
Redrow Homes Ltd (Eastern)	Ms	J	Hanslip
Reefguild Ltd			
Reeves & Neylan	Mr	J W	Cross
ReMaDe Kent & Medway	Ms	Diana	Lock
Rentokil			
Rentokil Initial UK Ltd			
Retirement Villages PLC	Mr		Gair
RH & RW Clutton Chartered Surveyors	Mr	Tim	Hutchings
RH Glover			
RH OVENDEN LTD	MR	R	OVENDEN
RH Ovenden Ltd			
Richards Butler	Miss		Berry
Richborough A Ltd			
Richborough Ltd c/o Sanderson Watts Assoc	Mr	Gary	Lever
Ridham Dock	Capt		Pepper
Ridham Sea Terminals Ltd	Mr	Jim	O'Connell
Ringbest c/o Littman & Robeson	Mr	Martin	Robeson
Ringway	Mr	John	Martin
Ringwoud with Kingsdown Parish Council	Mr	E	Fagg
Ripleys Scrapyard			
Ripple Parish Council	Mrs	Julia	Woodward
River Parish Council	Mr	D	Humphrey-Woodward
River Stour (Kent) Internal Drainage Board	Mr	Martin	Tapp
River Tram Transit Initiatives Ltd	Mr	Gordon	Winbourne
Riverhead Parish Council	Mrs	Alison	Tilbury
RMC Aggregates (Greater London)	Mr	Richard	Marshall
RMC Aggregates (Southern) Ltd	Mr	Nigel	Gould
RMC Aggregates (Southern) Ltd	Mr	John	Sullivan
RMC Estates & Development c/o Barton Willmore	Mr	Colin	Finlayson
RMC Group	Mr	Derek	White
Road Haulage Association	Mr	Roger	Wrapson

Road Haulage Association			
Robert Brett & Sons Limited			
Robert Brett & Sons Ltd	Mr	Mike	Courts
Robert Brett & Sons Ltd	Mr	Stewart	Mitchell
Robert Turley Associates	Ms	Amanda	Brown
Robinson Escott Planning Partnership	Mr	Fred	Robinson
Rochester Airport Plc c/o Kingsley Smith & Co	Mr	B	Kinglsey Smith
Rochester Cement Works c/o Barton Willmore	Mr	Colin	Finlayson
Rochester Swoops Festival	Mr	Gordon	Newton
Rodmersham Parish Council	Mrs	L	Jordan
Roffey Homes Ltd	Mr		Cheal
Rolvenden Parish Council	Mrs	J	Serra
Romany Institute	Dr		Kendrick
Romney Marsh Farms Partners	Mr	Christopher	Older
Romney Marsh Wind Farm Advisory & Action Group	Ms	Rosemary	Cooke
Rother District Council	Mr	David	Marlow
Rouse Kent Development Ltd	Ms	Caroline	Binns
Rouse Kent Development Ltd	Ms	Melanie	Gibson-Barton
Rouse Kent Ltd c/o Terence O'Rourke PLC	Ms	Julia	Jardine
Royal Borough of Windsor & Maidenhead	Mr	Paul	Smith
Royal Engineers Yacht Club	Mr	Brian	Cameron
Royal Mail	Mr	Bill	Cannon
Royal Mail	Mr	Bob	Phillips
Royal Mail Property Holdings plc			
Royal Military School of Engineering c/o Knight Frank	Mr	M A	Fellows
Royal National Institute for the Blind			
Royal School of Military Engineering	Mr	Martin	Eastwood
Royal Society for the Protection of Birds (RSPB)	Ms	Alison	Giacomelli
Royal Tunbridge Wells Civic Society	Mrs	Gill	Twells
Royal Tunbridge Wells Civic Society	Dr	Phillip	Witbourne
RPS Chapman Warren			
RPS Consultants	Mr	Kevin	Parr
RPS Group plc	Mr	Philip	Evans
RPS plc	Mr	Mark	Flatman
RPS PLC	MR	S	GAMAGE
RSPB	Ms	Helen	Byron
Ruckinge Parish Council	Mrs	M C	Shaw
RWE Innogy	Mr	K J	Somers
RWE Innogy Plc c/o Barton Willmore	Ms	Victoria	Bullock
Ryarsh Parish Council	Ms	Lynne	Mackie
Rydon Homes Ltd	Ms	H	Kuppers
Safety-Kleen Ltd			
Saga Group Ltd	Mr	Andrew	Goodsell
SAGE			
Sainsburys c/o RPS Plc	Mr	D	Brown
Saint Martins WI	Mrs	Audrey	Clark
Sall Contractors Ltd			
SALTWOOD COMMUNITY KERBSIDE COLLECTION	MR	D	PLUMSTEAD
Saltwood Kerbside Collection	Mr	David	Plumstead
Saltwood Parish Council	Miss	J D	Bessell
Sanderson Watts Associates	Mr	John	Norris
Sandgate Parish Council	Mrs	Julia	Archer
Sandhurst Parish Council	Mrs	Karin	Melby

Sandwich Metal Company			
Sandwich Parish Council	Mrs	Tracey	Ward
SANDWICH PORT & HAVEN COMMISSIONERS	MRS	M	BULL
Sandwich Port & Haven Commissioners			
Savacentre Ltd	Ms	Lisa	Wilson
Save Lyminge Forest Action Group	Mrs	J	Austin
Saxon Homes	Mr	Mark	Ashbolt
SCA Packaging	Mr	Martin	Mead
SCA Packaging	Mr	Martin	Millar
Sea Container Ports (Folkestone Harbour Board)	Mr	Peter	Doran
Sea France	Mr	Robin	Wilkins
Seal Parish Council	Mrs	L J	Talbot
SecondSite Property Holdings Ltd/Gran LNG Ltd c/o RPS Plc	Mr	G	Bullock
SEEBOARD			
SEEDA	Mr	Mark	Goldthorpe
SEEDA	Mr	D	Golletz
Seer Restoration Ltd	Mr	M	McKee
SEERA	Mr	M	Tugwell
SEERAWP	Mr	Chris	Waite
Sellindge Parish Council	Mr	Reg	Hall
Selling Gardeners	Mrs	Judith	Badmin
Selling Parish Council	Mrs	Susan	Shaw
Sericol	Mr		Watson
Sevenoaks & District Chamber of Commerce	Mrs	Carol	Robinson
Sevenoaks District Council	Mr	Ian	Bailey
Sevenoaks District Council	Cllr	G P E	Davison
Sevenoaks District Council	Cllr	A E	Dawson
Sevenoaks District Council	Cllr	C	Dibsdall
Sevenoaks District Council	Mr	Nigel	Howells
Sevenoaks District Council	Cllr	R	Howes
Sevenoaks District Council	Cllr	Avril	Hunter
Sevenoaks District Council	Mr	Mike	King
Sevenoaks District Council	Cllr	James	London
Sevenoaks District Council	Mrs	Jean	Morgan
Sevenoaks District Council	Cllr	B	Ramsay
Sevenoaks District Council	Mr	Roger	Russell
Sevenoaks District Council	Mr	Karl	Sewell
Sevenoaks District Council	Mr	Dennis	Stevenson
Sevenoaks District Council	Cllr	David	Watson
Sevenoaks District Council			
Sevenoaks Highway Unit	Mr	Mike	Linfield
Sevenoaks Parish Council	Ms	Sarah	Arding
Sevenoaks Society	Mr	Frank	Marshall
Sevenoaks Weald Parish Council	Mrs	K	Smith
Sewell Bird & Axon	Mr	Stuart	Davies
Shadoxhurst Parish Council	Mrs	J	Batt
Sheals Action	Mr	A J W	Phippard
Sheldwich, Badlesmere and Leaveland Parish Council	Mrs	Janet	Gee
Shelford Composting Ltd			
Shepherd Neame Limited	Mr	Robert	Neame
Shepherd Neame Ltd	Mr	George	Barnes
Shepherd Neame Ltd	Mr	Jonathan	Neame

Shepherdswell with Coldred Parish Council	Ms	D	Radford
Sheppy Ltd			
Shepway District Council	Mr	Robert	Beck
Shepway District Council	Cllr	Robert	Bliss
Shepway District Council	Cllr	G E	Bunting
Shepway District Council	Cllr	D	Callahan
Shepway District Council	Cllr	S J	Carey
Shepway District Council	Mr	David	East
Shepway District Council	Mr	Stephen	Gasche
Shepway District Council	Mr	Steve	Goulette
Shepway District Council	Cllr	R E	Green
Shepway District Council	Cllr	S	Maile
Shepway District Council	Cllr	Denise	Maskell
Shepway District Council	Mr	Jeff	Stack
Shepway District Council	Mr	Ronald	Thompson
Shepway District Council	Ms	Valerie	Tupling
Shepway District Council	Mrs	Sue	Yates
SHEPWAY PRIMARY CARE TRUST	MR	C	MANICOM
Shipbourne Parish Council	Mr	Curtis G	Galbraith
Sholden Parish Council	Mrs	Pat	Renny
Shoosmiths	Mr		Evans
Shore Building Contractors Ltd.	Mr		Sheppard
Shoreham Parish Council	Mrs	Barbara J	Ide
Shorne Parish Council	Mrs	T	Martin
Showmen's Guild LHC	Mr	George	Irvin
Silica and Moulding Sands Association	Dr	John	Sibson
SITA			
SITA Products and Services Ltd			
SITA UK	Mr	C	Edwards
Sittingbourne Research Centre	Mr	Stuart	Holmes
Sittingbourne Society	Mr	Malcolm	Moore
Sittingbourne Town Centre Management	Ms	Tina	Pullinger
SJW Developments & Construction Ltd	Mr		Wright
Skipaway Ltd	Mr	Mark	Orsbourn
Slough Borough Council	Ms	Gillian	Ralph
SLR Consulting Ltd	Mr	Chris	Lowden
Smarden Parish Council	Ms	Caroline	Levett
Smeeth Parish Council	Mr	P J	Scotton
Smith Stuart Reynolds	Mr	Simon	Smith
Smith Woolly	Mr		Hothi
Smurfit Townsend Hook	Mr	Ignacio	Sevillano
Snargate Parish Council	Mr	D J	Body
Snodland Parish Council	Mrs	S	Hunter
Soroptimist International of Seven Oaks	Miss	Isobel	White
Soroptomists International	Mrs	J	Bridgeman
South Canterbury Trust	Mr	A C	Groombridge
South Darenth Farm & Cold Stores Ltd	Dr	P	Taylor
South East England Development Agency	Mr	Paul	Hudson
South East England Development Agency	Mr	Ken	Mackness
South East England Regional Assembly	Mr	M	Gwilliam
South East England Tourist Board	Ms	Liz	Craven
South East England Tourist Board	Mr	Mark	Dowling
South East Recycling	Mr	Rob	Halpin

South East Regional Housing Board	Mr	Paul	Martin
South East Water	Mr	Boris	David
South East Water	Mr	Paul	Holmes
South Eastern Trains	Ms	Sarah	Boundy
South Eastern Trains	Mr	Mike	Gibson
South Eastern Trains	Mr	Michael	Holden
South Eastern Trains	Mr	Stuart	McVernon
South Herts Waste Management	Mr	Ian	White
South Kent College	Mr	Robin	Jones
South Kent Community Healthcare NHS Trust	Ms	Caroline	Davis
South Kent Community Healthcare NHS Trust	Mr	Geoff	Prince
South Kent Rural Transport Partnership	Mr	Trevor	Skelton
Southampton City Council	Mr	Stuart	Chivers
Southborough Parish Council	Mrs	B J	Wickens
Southeast (Sandwich) Action Group for the Environment (SAGE)	Mr	Phil	Scott
Southend Borough Council	Ms	Debbie	Skinner
Southern Water	Mr	Martin	Baggs
Southern Water	Mr	Ian	Scott
Southern Water (Kent)	Mr	David	Nuttall
Southern Water Plc	Mr		Spencer
Southern Water Services Ltd	Mr	Chris	Kneale
Southfleet Parish Council	Mrs	Jackie	Hardinges
Speldhurst Parish Council	Mrs	Pauline	Lambell
Speldhurst Village Society	Mr	R	Fisher
SPOKES	Mr	J	Shirley
Sport England	Mr	John	Feetam
Sport England South East	Mr	John	Feetam
Sprachkreis Deutsch	Mr	Christopher	Pirie
Squires Bridge Homes Ltd.	Mr		West
St George South London Ltd.	Mr		Hutchings
St James Homes Ltd.	Ms		Callaghan
St James' Pit c/o Drivers Jonas	Mr	Sean	McGrath
St James' Pit Dartford c/o Drivers Jonas	Mr	Sean	McGrath
St John Ambulance, Gravesend Division	Ms	Sylvia	Munns
St Mags Resort	Miss	Trudy	Carter
St Mary's Platt & District Society	Mr	Dudley	Lloyd
St. John's College Cambridge c/o Carter Jonas			
St.Cosmus and St.Damian in the Blean Parish Council	Mrs	A	Cover
St.Margaret's-at-Cliffe Parish Council	Mrs	J	Cook
St.Mary-in-the-Marsh Parish Council	Mrs	J A	Binnington
St.Nicholas-at-Wade with Sarre Parish Council	Mrs	Julie	Francis
Stadium Developments Ltd c/o G L Hearn	Mr	Julian	Goodban
Stagecoach East Kent	Mr	Paul	Southgate
Stagecoach East Kent Ltd	Mr	Neil	Instrall
Stagecoach East Kent Ltd	Mr	P	Southgate
Stalisfield Parish Council	Mrs	J A	Lacey
Stanford Parish Council	Mrs	Dorothy	Bultitude
Stanhope Parish Council	Mrs	S B	Stiffell
Stannifer Developments Ltd	Mr	Alan	Paterson
Stansted Parish Council	Mrs	J	Sayle
Staple Parish Council	Mrs	P	Heathfield
Staplehurst Brickworks	Mr	P J	Burke

Staplehurst Parish Council	Mrs	J S	Bassett
Staplehurst Society	Mr	Bryn	Crooks
Star Plant Limited			
Star Plant Ltd			
Stelling Minnis Parish Council	Mrs	S	Carter
Stema Shipping (UK) Ltd	Mr	Martin	Johansen
Stena Line UK	Mr	Gareth	Cooper
Stevens Bros Builders Ltd.	Mr		Stevens
STEVENS BROTHERS BUILDERS LTD	MR	J	STEVENS
Steward Transport	Mr	John	Steward
Stockbury Parish Council	Mrs	E M	Buxton
Stone Action Group	Mr	John	Thilman
Stone Parish Council	Ms	L	Pilcher
Stone-cum-Ebony Parish Council	Mrs	M	Shaw
Stourmouth Parish Council	Mr	John	Lawn
Stowting Parish Council	Mrs	J	Luck
Strategic Rail Authority	Mr	P	Burrell
Strategic Rail Authority	Mr	James	Waight
Strategic Rail Authority	Ms	Laura	Wren
Strood Heritage Society	Mr	David	Goodwin
Strutt & Parker	Mr	Ben	Gray
Strutt & Parker	Mr		Mitford-Slade
Strutt & Parker	Mr	F J	Thompson
Sturry Parish Council	Mrs	L	Jokic
Style Place Farm	Mr	Paul	Dubrow
Sundridge and Ide Hill Parish Council	Mrs	Barbara	Cornell
Surrey County Council	Mr	George	Burnett
Surrey County Council	Mr	Paul	Coen
Surrey County Council	Ms	Victoria	Crossland
Surrey County Council	Mr	Richard	Evans
Surrey County Council	Mr	C	Finlay
Surrey County Council	Mr	Chris	Hanson-Khan
Surrey County Council	Mr	Roger	Hargreaves
Surrey County Council	Mr	C	Howie
Surrey County Council	Ms	Sarah	Povey
Sustainable Environmental Systems Ltd	Mr	Ian	Hargreaves
Sustainable Property Consultants	Mr	Chris	Marsh
SUSTRANS	Mr	Ray	Blackwell
Sustrans	Mr	David	Young
Sutton and East Surrey Water plc	Mr	Lester	Sonden
Sutton Valence Parish Council	Mr	Robert	Murfin
Sutton-at-Hone Parish Council	Mrs	K	Gale
Sutton-by-Dover Parish Council	Ms	Susan	Smith
Suzy Lamplugh Trust			
Swale Borough Council	Mr	Dave	Barton
Swale Borough Council	Mr	Steve	Bessant
Swale Borough Council	Mr	Alan	Best
Swale Borough Council	Cllr	Andrew	Bowles
Swale Borough Council	Cllr	Adrian	Crowther
Swale Borough Council	Mr	Chris	Edwards
Swale Borough Council	Mrs	Hilary	Hanslip
Swale Borough Council	Mr	Behdad	Haratbar
Swale Borough Council	Cllr	Angela	Harrison

Swale Borough Council	Cllr	Donald	Jordan
SWALE BOROUGH COUNCIL	MR	I	LEWIS
Swale Borough Council	Mr	Ian	Lewis
Swale Borough Council	Mr	Brian	Lloyd
Swale Borough Council	Cllr	Elvina	Lowe
Swale Borough Council	Mr	Greg	McDonald
Swale Borough Council	Mr	Brian	Planner
Swale Borough Council	Cllr	Colin	Prescott
Swale Borough Council	Mr	Peter	Speakman
Swale Borough Council	Mr	Steve	Vartoukian
Swale Borough Council	Cllr	John	Wright
Swale Chamber of Commerce	Mrs	Jenny	Aldridge
Swale Chamber of Commerce	Mrs	Shelia	Wade
Swale Housing Association Ltd	Mr	Miles	Lea
Swan Hill Homes Ltd.	Mr		Backhouse
Swanley & District Chamber of Commerce	Mr	Frank	McConnell
Swanley Parish Council	Mr	B	Daley
Swanscombe and Greenhithe Parish Council	Mrs	Sarah	Stapleton
Swingfield Parish Council	Mrs	V N	Wiles
Symonds Group	Mr	Peter	Hine
Synergy Planning And Property Consultants Ltd	Mr	Andrew	Street
SYNERGY PPC LTD	MR	A	STREET
T A Millard London Ltd.	Mr		Westcott
Take a Break	Mrs	Carole	Rowe
Tandridge District Council	Mr	R W	Evans
Tandridge District Council	Mr	JL	Phillips
TANDRIDGE DISTRICT COUNCIL	MR	J	PHILLIPS
Tarmac Ltd	Mr	Simon	Chaffe
Tarmac Recycling Ltd	Mr	Ivan	Anketell
Tatham Homes Ltd.	Mr		Tatham
Taylor Brothers Plant Hire Ltd	Mr	Peter	Taylor
Taylor Brothers Plant Hire Ltd			
Taylor Woodrow Dev. Ltd (David Wilson Homes)	Mr	David	Edwards
Taylor Woodrow Developments	Mr		Wells
Taylor Woodrow Developments Ltd	Mr	Peter	Bowden
TBF Thompson Properties (Imperial Wharf)	Mr	J	McMahon
Technology Enterprise Kent	Mr	Peter	Parsons
Telewest Broadband	Mr	Gary	Sextone
Telspec Europe Ltd	Mr	Magnus	Braxell
Temple Ewell Parish Council	Mrs	J	Potts
Tenterden Parish Council	Mrs	H	Deackes
Terry Brown & Mrs D Brown			
Tesco Stores Ltd	Mr	Michael	Forbes
Tesco Stores Ltd c/o G L Hearn	Ms	C	Parker
Tesco Stores Ltd c/o Planning Perspectives	Mr	Alister	Henderson
Teston Parish Council	Mrs	Michelle	Tatton
Tetlow King Planning	Mr	Stephen	Hinsley
Teynham Parish Council	Mrs	C	McIlroy
Thames Cleaning Co Ltd	Mr	Michael	Weller
Thames Estuary Partnership			
Thames Europort	Mr		Taylor
Thames Gateway Kent Partnership	Mr	Marc	Hume
Thames Gateway South Essex Partnership	Ms	Tracey	Boosey

Thames Gateway South Essex Partnership	Ms	Sam	Foster
Thames Gateway Strategic Executive	Mr	J	Sienkiewicz
Thames Water Authority			
Thames Water Authority			
Thames Water Property Services	Ms	Georgie	Cook
Thames Water Property Services	Mr	John	Smith
Thamesport	Mr	Robin	Macleod
Thamesport (London) Limited	Mr	Andy	Woods
Thanet and East Kent Chambers Ltd	Ms	Lorna	Wells
Thanet College	Mr	Robert	Armstrong
Thanet College	Mr	Geoff	Burney
Thanet District Council	Cllr	Simon	Brown
Thanet District Council	Cllr	Anne	Chater
Thanet District Council	Cllr	Rozanne	Duncan
Thanet District Council	Mr	Colin	Fitt
Thanet District Council	Ms	Anne	Fox
Thanet District Council	Cllr	David	Green
Thanet District Council	Cllr	Ken	Gregory
Thanet District Council	Ms	Nicola	Henson
Thanet District Council	Mr	T	Herron
Thanet District Council	Cllr	Laura	Higgs
Thanet District Council	Mr	Steve	Holcroft
Thanet District Council	Mr	Tom	McGuckin
Thanet District Council	Mr	Steve	Moore
Thanet District Council	Mr	Richard	Samual
Thanet District Council	Mr	Nasser	Sarrafan
Thanet District Council	Cllr	Jason	Savage
Thanet District Council	Mr	Mark	Seed
Thanet District Council	Mr	Stuart	Smith
Thanet District Council	Cllr	Michael	Tomlinson
Thanet District Council	Cllr	John	Watkins
Thanet District Council Strategic Partnership	Ms	Sophie	Chadwick
Thanet Travel Forum	Mr	Brian	Smith-Stewart
Thanet Travel Forum	Mrs	Deborah	Smith-Stewart
THANET WASTE MANAGEMENT	MR	S	RAY
Thanet Waste Management	Mr	Ray	Spencer
Thanington Without Parish Council	Mr	Roger C	Cheeseworth
The Banks Group	Mr	J	Cook
The Bell Cornwell Partnership	Mr	John	Cornwell
The Bell Cornwell Partnership	Ms		Stewart
The Brick Business	Mr	Nigel	Griffiths
The Broadstairs Society	Mr	M R	Bon
THE BROADSTAIRS SOCIETY	MISS	J	SMITH
The Broadstairs Society	Mr	J	Tullett
The Brown Mineral Partnership	Mr	JP	Unterhalter
The Crown Estate	Mr	Neil	McCluskey
The Crown Estate c/o Wardell Armstrong	Mr	John D	Pears
The Darenth River Ballast Co Ltd	Mr	J A	Durtnell
The Deal Society	Mr	Keith	Wollaston
The Dept. of Work & Pensions			
The Diocesan Council for Social Responsibility	Ms	Pearl	Anderson
The Dover Society	Mr	Terry	Sutton MBE
The Fairfield Partnership	Mr		James

The Faversham Society	Mr	Arthur	Percival
The Governors Platt C of E Primary School	Mrs	L R	Mackay
The Gypsy Council			
The Hollingbourne Society	Mr	A W	Brice
The Jarman Partnership	Mr	BW	Bond
The Kent Gurdwara Council			
The London Fancy Box Co Ltd	Mr	Christopher	Lawson
The Pedestrians Association	Mrs	Judith	Pope
The Prow 3	Miss	Louise	Weller
The Rail Freight Group			
The Royal British Legion Industries	Mr	Frank	Myers
THE SEVENOAKS SOCIETY	MR	R	MARSHALL
The Stroke Association, Medway + Swale Dysphasia support groups	Mrs	Barbara	Elliott
The Waterfront Partnership	Mr	Steve	Bourne
Thomas Eggar Solicitors	Ms		Webster
Throwley Parish Council	Mrs	Frances	Wilson
Thurnham Parish Council	Mrs	S	Babington
Thurrock Council	Mr	P	Shelley
Tibbett & Britten Group plc	Mrs	Jenine	Sharp
Tilmanstone Parish Council	Mrs	S	King
Tilmanstone Salads	Mr	Robert	Ward
TJ Composting Group Ltd	Mr	T	Johnston
TJ Skips			
Tom La Dell Landscape Architects	Mr	Tom	La Dell
Tom LaDell Landscape Architects	Mr	Tom	LaDell
Tonbridge & District Railway Travellers Association	Mr	L R	Shields
Tonbridge & Malling Borough Council	Cllr	Matthew	Balfour
Tonbridge & Malling Borough Council	Cllr	David	Evans
Tonbridge & Malling Borough Council	Mr	Brian	Gates
Tonbridge & Malling Borough Council	Mr	Neil	Hewitt
Tonbridge & Malling Borough Council	Cllr	Paul	Hickmott
Tonbridge & Malling Borough Council	Cllr	Godfrey	Horne
Tonbridge & Malling Borough Council	Mr	David	Hughes
Tonbridge & Malling Borough Council	Mr	Steve	Humphrey
Tonbridge & Malling Borough Council	Mr	Phil	Linskey
Tonbridge & Malling Borough Council	Mr	Mike	McCulloch
Tonbridge & Malling Borough Council	Mr	Mike	O'Brien
Tonbridge & Malling Borough Council	Mr	Mark	Raymond
Tonbridge & Malling Borough Council	Cllr	Liz	Simpson
Tonbridge & Malling Highway Unit	Mr	Henry	Goodman
Tonbridge Civic Society	Mr	Brian	Jordon
Tonbridge Civic Society	Mr	Peter	Stibbard
Tonbridge Civic Society	Mr	Peter	York
Tonbridge Conservation Group	Mr	George	Andrews
Tonge Parish Council	Mr	D	Akhurst
Tovil Parish Council	Mrs	Alison	Chew
Town & Countryside Homes Ltd.	Mr		Akhurst
Town and Country Housing Association	Mr	Paul	White
Town Centre Management	Mr	Rob	Woods
Towncentric	Mr	S	Sangha
Towncourt Building Service	Mr	John	Devine
Towns Women's Guilds	Ms	P	Wilks

TPC	Mr	John	Sidgwick
Transcend Property c/o Scott Brownrigg	Mr	David	Maddox
Transco Plc	Mr	Malcolm	Russell
Transport 2000	Ms	Vicky	Cann
Transport 2000	Mr	Derrick	Coffee
Transport for London			
TRANT CONSTRUCTION LTD	MR	P	DUDMAN
Trenport Investments Limited	Mr	Chris	Hall
Triple A Multimedia Group Limited	Mr	Terry	Armstrong
Triscape Planning	Mr	Colin	Virtue
Trodell Plant Hire	Mr	Jim	Bailey
Trottiscliffe Parish Council	Mrs	Frances	Merryfield-Day
Try Homes Thames Valley Ltd.	Mr		Bell
Tunbridge Wells Access Group	Mr	Mike	Knoth
Tunbridge Wells Action for Traffic	Mrs	Sara	Newman
Tunbridge Wells Borough Council	Mr	Nick	Baldwin
Tunbridge Wells Borough Council	Mr	Will	Farmer
Tunbridge Wells Borough Council	Mr	Tony	Fullwood
Tunbridge Wells Borough Council	Mr	Nick	Green
Tunbridge Wells Borough Council	Mr	Alan	Legg
Tunbridge Wells Borough Council	Mr	John	Lister
Tunbridge Wells Borough Council	Cllr	D J	Neve
Tunbridge Wells Borough Council	Mr	Adrian	Neve
Tunbridge Wells Borough Council	Cllr	H D	Patterson
Tunbridge Wells Borough Council	Cllr	L W A	Price
Tunbridge Wells Borough Council	Cllr	M A	Rusbridge
Tunbridge Wells Borough Council	Mr	Andy	Smart
TUNBRIDGE WELLS BOROUGH COUNCIL	MR	J	SMITH
Tunbridge Wells Borough Council	Cllr	J C	Smith
Tunbridge Wells Borough Council	Mr	Rodney	Stone
Tunbridge Wells Borough Council	Cllr	R J	Weeden
Tunbridge Wells Borough Council	Mr	James	Whitehorn
Tunbridge Wells Borough Council	Cllr	F T B	Williams
Tunstall Parish Council	Mrs	D	Caveney
TWBC	CLLR	F	WILLIAMS
UK Onshore Operators' Group	Mr	Henry	Boyd
UK Waste Management Ltd			
Ulcombe Parish Council	Mrs	B	Samuelson
Union Railways Property	Mr	Tim	Nicholls
Union Railways Property	Mr	Tim	Nicholls
United House Group Ltd			
United Marine Aggregates Ltd	Mr	Rick	Bodle
United Utilities c/o Arrowcroft	Mr	Steven	Verity
United Utilities c/o CBRE	Mr	Steven	Verity
Universal Salvage Plc			
University of Greenwich	Mr	Peter	Glazes
University of Kent	Prof	Phil	Davies
University of Kent	Mr	Nick	McHard
University of Kent	Prof	Roger	Vickerman
University of Kent at Canterbury	Professor	David	Melville
University of Kent at Canterbury c/o Fuller Peiser	Ms	Nicola	White
Upchurch Parish Council	Mrs	S	Rossiter

Upchurch Planning Review Group	Mr	Noel	Boulting
Upper and Lower Medway Internal Drainage Board	Mr	Mike	Watson
Upper Hardres Parish Council	Mrs	Pamela	Chatfield
Urban Exposure Ltd.	Mr		Mediratta
Verdant Group PLC			
Vigo Parish Council	Ms	Jo	Glass
Vincent & Gorbng Planning Associates	Mr	Martin	Friend
Vines Centre Trust	Mr	Paul	Robinson
Viridor Waste Management	Mr	M	Oliver
Voaden Sandbrook	Mr	Mark	Leivers
Voaden Sandbrook Ltd	Mr	David	Sandbrook
W A Turner	Mr	David	Sims
W Brazil & Brothers			
W S Atkins Ltd			
W Stirland Ltd.	Mr		Stirland
W T Cleary			
Wakeley Brothers (Rainham Kent) Ltd c/o Michael Parkes	Mr	Michael	Parkes
Walker Construction (UK) Ltd	Mr		Walker
Walmer Parish Council	Ms	J	Warrington
Waltham Parish Council	Ms	Lynette	Gosling
War on Waste	Mr	Nick	Gill
Ward Homes (Chatham) c/o David Lock Associates	Mr	Phil	Copsey
Ward Homes c/o David Hicken Associates	Mr	Philip	Aelen
Ward Homes Ltd	Mr	Michael	Drury
Warden Parish Council	Mr	Clive	Hills
Warehorne Parish Council	Mrs	M C	Shaw
Waste Recycling Group	Mr	P	Green
Waste Recycling Group	Mr	Keith	Hobbs
Waste Recycling Group c/o Stephen Bowley Planning Consultancy	Mr	Stephen	Bowley
Waste Recycling Group PLC	Mr	Paul	Green
Waste Way Ltd			
Wateringbury Parish Council	Ms	S	Cockburn
Wates Homes			
WBB Minerals	Mr	Gary	Stringer
WBB Minerals	Mr		Wright
WBB Minerals	Mr	John	Wright
WBB Minerals	Mr		Wright
Weald of Kent Preservation Society	Mr	Hugh	Cooper
Wealden District Council	Mr	AJ	Brown
Wealden District Council	Mr	J	Thomas
Wealden Homes	Mr		Thompson
Wealden Line Campaign	Mr		Goodfellow
Webster's Quarry	Mr	H F	Glover
Weeks Consulting	Mr	Matt	Mehegan
Weeks Consulting Ltd	Mr	Philip	Hill
Weidmuller Interface Ltd	Mr	Stephen	Hadlow
West Berkshire Council	Ms	Nicky	Linham-Mardon
West Branch Labour Party	Mrs	Wendy	Hollands
West Farleigh Parish Council	Mr	D A	Swan
West Kent Chamber of Commerce & Industry	Ms	Jackie	Matthias
West Kent College	Mr	Bill	Fearon

West Kent College	Mr	Barry	McGilvray
West Kent NHS & Social Care Trust	Mr	Ward	Griffiths
West Kent NHS Trust	Mr	John	Wilkes
West Kent Partnership	Mr	Mark	Worrall
West Kingsdown Parish Council	Mrs	P A	Bosley
West Malling Parish Council	Ms	Carole	D'Silva
West Peckham Parish Council	Mrs	Susan	Canning
West Sussex County Council	Mr	Gary	Abraham
West Sussex County Council	Mr	Steve	Brown
West Sussex County Council	Mr	Mark	Hammond
West Sussex County Council	Mr	Colin	McKenna
Westbere Parish Council	Ms	Margaret	Dowley
Westbury Homes	Mr	G	Norton
Westbury Homes (Holdings) Ltd	Mr	David	Mills
Westbury Homes (southern) Ltd.	Mr		Hull
Westbury/Taylor Woodrow/Persimmon c/o Boyer Planning	Mr	N J	Groves
Westerham Parish Council	Mrs	Lorraine	Gear
Westfield Shoppingtowns Ltd c/o RPS	Mr	Sean	Bashforth
Westminster Dredging Co Ltd	Mr	S R	Wakerly
Westwell Parish Council	Mrs	Susan	Wood
White Rose Environmental Ltd			
White Young Green Planning	Mr	John	Rainey
Whitfield Parish Council	Mrs	Michelle	Cooper
Whitstable and District Chamber of Commerce	Mr	D	Bird
Whitstable Harbour	Mr	M	Wier
Whitstable Harbour Board	Capt	John	Clayton
Whitstable Society	Mr	Martin	Taylor
Wichling Parish Council	Mr	M	Webster
Wickhambreaux Parish Council	Mr	Richard	Barton
Wilcon Homes Anglian	Mr	AET	Blackwell
Wilcon Homes Eastern	Mr	G	Wells
William Harvey Hospital			
Willmarsh Developments c/o Hume Planning Consultancy	Mr	A	Hume
Wilmington Parish Council	Mrs	Suzanne	Redden
Wilson Bowden	Mr		Richardson
Wilson Connolly Home Counties	Ms	Julie	Goff
Wilson Connolly Home Counties c/o Tetlow King			
Wilson Skips			
Wimpey Homes Holdings	Mr	M	Baldwin
Wincanton Distribution	Mr	Paul	Pearson
Wingham Parish Council	Mrs	M	Richards
Wittersham Parish Council	Mrs	Yvonne	Osborne
Wittersham PC	Mrs	Georgina	Magee
Wm Morrisson Supermarkets Plc c/o Peacock & Smith	Miss	Cassie	Holland
Wokingham District Council	Ms	Julia	Treadwell
Womens Fellowship, Northfleet United Church	Mrs	Christine	Hammond
Women's Institute	Ms	Jenny	Edmed
Women's National Commission			
Womenswold Parish Council	Ms	Carol	Baker
Woodchurch Parish Council	Mrs	J M	Batt
Woodland Trust	Mr	Tony	Chadwick

Woodnesborough Parish Council	Ms	S	Wells
Workbridge Project	Mr	Gary	Ashman
Wormshill Parish Council	Mr	J	Leigh-Pemberton
Worth Parish Council	Mrs	Jan	Hughes
Wouldham Parish Council	Mr	Michael J	Ross
WRAP			
WRG			
Wrotham Parish Council	Ms	Lesley	Cox
WSP Development	Dr	Martyn	Heyes
Wye with Hinxhill Parish Council	Mrs	Jenny	Oram
Wyecycle	Mr	Richard	Boden
Wyn Thomas Gordon Lewis	Mr	G	Jenkins
Yalding Parish Council	Mrs	A	Lloyd
Yoga / Healing group	Mr	Michael	Hannah
Yorkshire Environmental Solutions Ltd			
	Mr	T	Adams
	Mr	Christopher	Bailey
	Mr	G W	Barten
	Mr	Walter	Boehling
	Mr	Steve	Bowley
	Mr	C R	Byers
	MR	A	COOPER
	MR	W	DEAKIN
	Mr	D	Funnell
	Ms	Pippa	Hyam
	MR	W	LEETHAM
	Mr	R	Leigh-Pemberton
	Mr	J R	Murrell
	MRS	J	OWEN
	Mr and Mrs	M & J	Parfitt
	Mr	C J	Parker
	Mr	R	Perrin
	MR	T	READER
	Mr	D H	Taylor
	Mr	Trevor	Venis
	Ms	Janet	Waghorn
	Mr	Mike	Webb
	MR	N	WHITBURN

Annex D

Strategy Publicity

D1 MEDIA COVERAGE

Table D1.1 Details of the media coverage obtained during the Strategy public consultation stage.

Date of article	Newspaper/media	Consultation details	Treatment facilities	Landfill sites	Recycling options
27.07.2006	www.kentonline.co.uk	✓	✓		
30.07.2006	www.news.bbc.co.uk		✓		
02.08.2006	www.news.bbc.co.uk	✓			
03.08.2006	Dover Mercury	✓	✓		✓
03.08.2006	East Kent Mercury	✓	✓		✓
03.08.2006	Folkestone Herald	✓	✓		✓
03.08.2006	Kentish Express		✓		
04.08.2006	Isle of Thanet Gazette	✓	✓		
04.08.2006	Isle of Thanet Gazette		✓		✓
10.08.2006	Folkestone Herald		✓		✓
10.08.2006	Folkestone Herald		✓		
10.08.2006	Dover Mercury		✓		
10.08.2006	Dover Mercury	✓	✓		
10.08.2006	East Kent Mercury	✓	✓		
10.08.2006	Herne Bay Gazette	✓	✓		
10.08.2006	Kentish Gazette	✓	✓		
10.08.2006	Whitstable Gazette	✓	✓		
11.08.2006	Isle of Thanet Gazette		✓		
13.08.2006	Kent on Sunday	✓	✓	✓	
20.08.2006	Kent on Sunday		✓		
25.08.2006	Isle of Thanet Gazette		✓		
27.08.2006	Kent on Sunday		✓		✓
31.08.2006	Dover Express	✓	✓		
31.08.2006	Dover Express		✓		
31.08.2006	East Kent Mercury	✓	✓		
31.08.2006	East Kent Mercury		✓		
03.09.2006	www.bbc.co.uk		✓		
07.09.2006	East Kent Mercury	✓	✓		✓
14.09.2006	East Kent Mercury		✓		
14.09.2006	East Kent Mercury	✓	✓		
14.09.2006	Dover Mercury		✓		
14.09.2006	Dover Express	✓	✓		
14.09.2006	Dover Express		✓		
21.09.2006	East Kent Mercury	✓	✓		
28.09.2006	East Kent Mercury	✓	✓		