

B Detailed Summary Sheets and Mapping

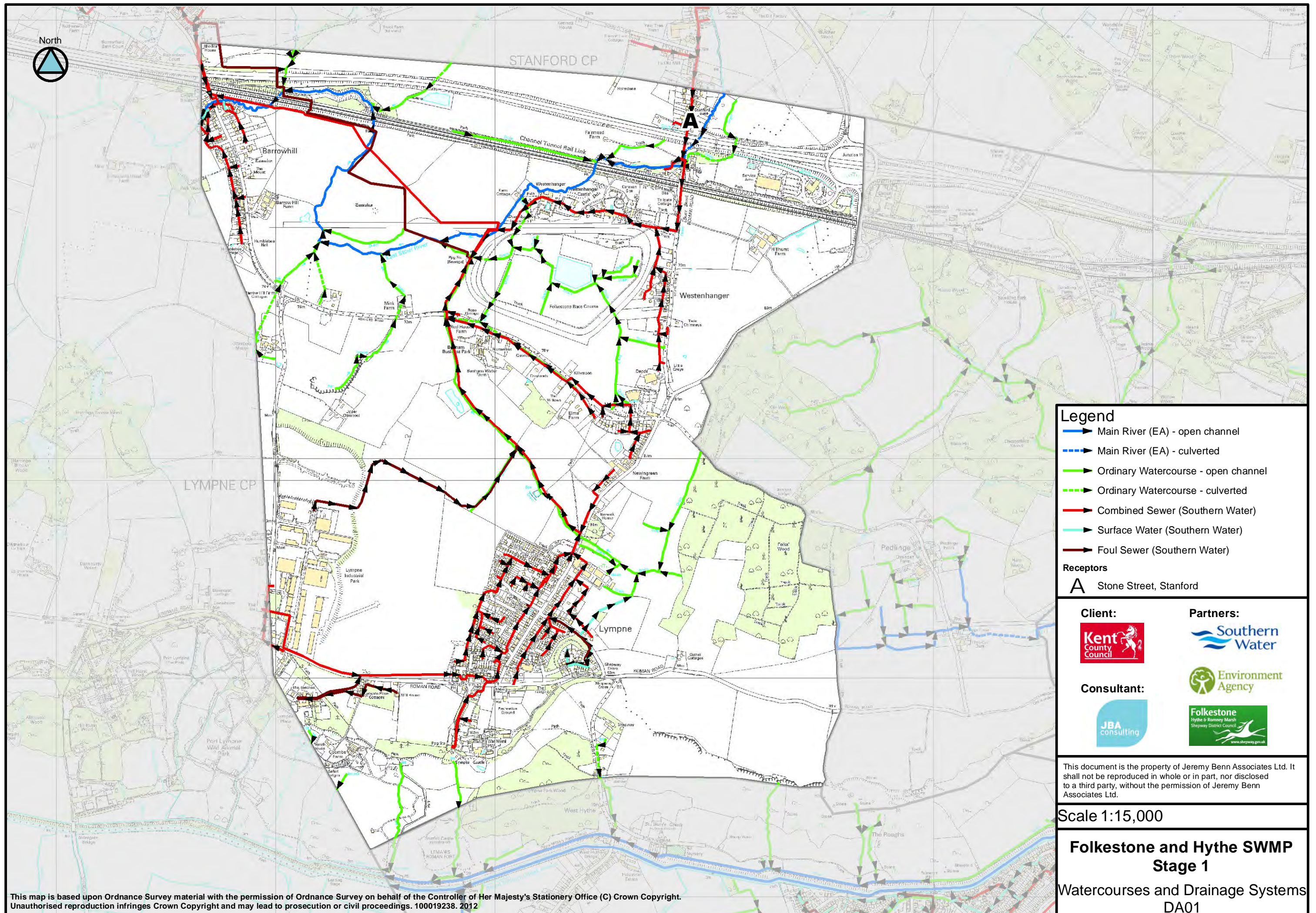
B.1 DA01 Lympne

Folkestone and Hythe Stage 1 SWMP : Summary and Actions

Drainage Area 01

Area overview

Area (km ²)	8.3		
Drainage assets/systems	Type	Known Issues/problems	Responsibility
East Stour	Main River	There are no recorded problems along this watercourse reach relating to this drainage area.	Environment Agency
Drains	Ordinary Watercourse	There are numerous drains feeding the East Stour, however there are no incidents recorded.	Kent County Council
Sewer network	Sewers (combined, foul and surface water)	No known problems of surcharging across the drainage area.	Southern Water
Receptor	Source	Pathway	Historic Evidence
A: Stone Street, Stanford	Heavy rainfall resulting in localised backing up and/or ponding of fluvial and/or surface water	The flow pathway comes from the north east and flows south west towards the East Stour. This area is located in Flood Zone 2 and 3 and the deep 30 and 200 year FMfSW. The mapping suggests that the channel tunnel railway and the M20 provide a barrier to overland flow routes, and as a result suggests that water will pond within this area.	No historic evidence recorded.



Legend

- ➔ Main River (EA) - open channel
- ➔ Main River (EA) - culverted
- ➔ Ordinary Watercourse - open channel
- ➔ Ordinary Watercourse - culverted
- ➔ Combined Sewer (Southern Water)
- ➔ Surface Water (Southern Water)
- ➔ Foul Sewer (Southern Water)

Receptors

- A Stone Street, Stanford

Client:



Partners:



Consultant:

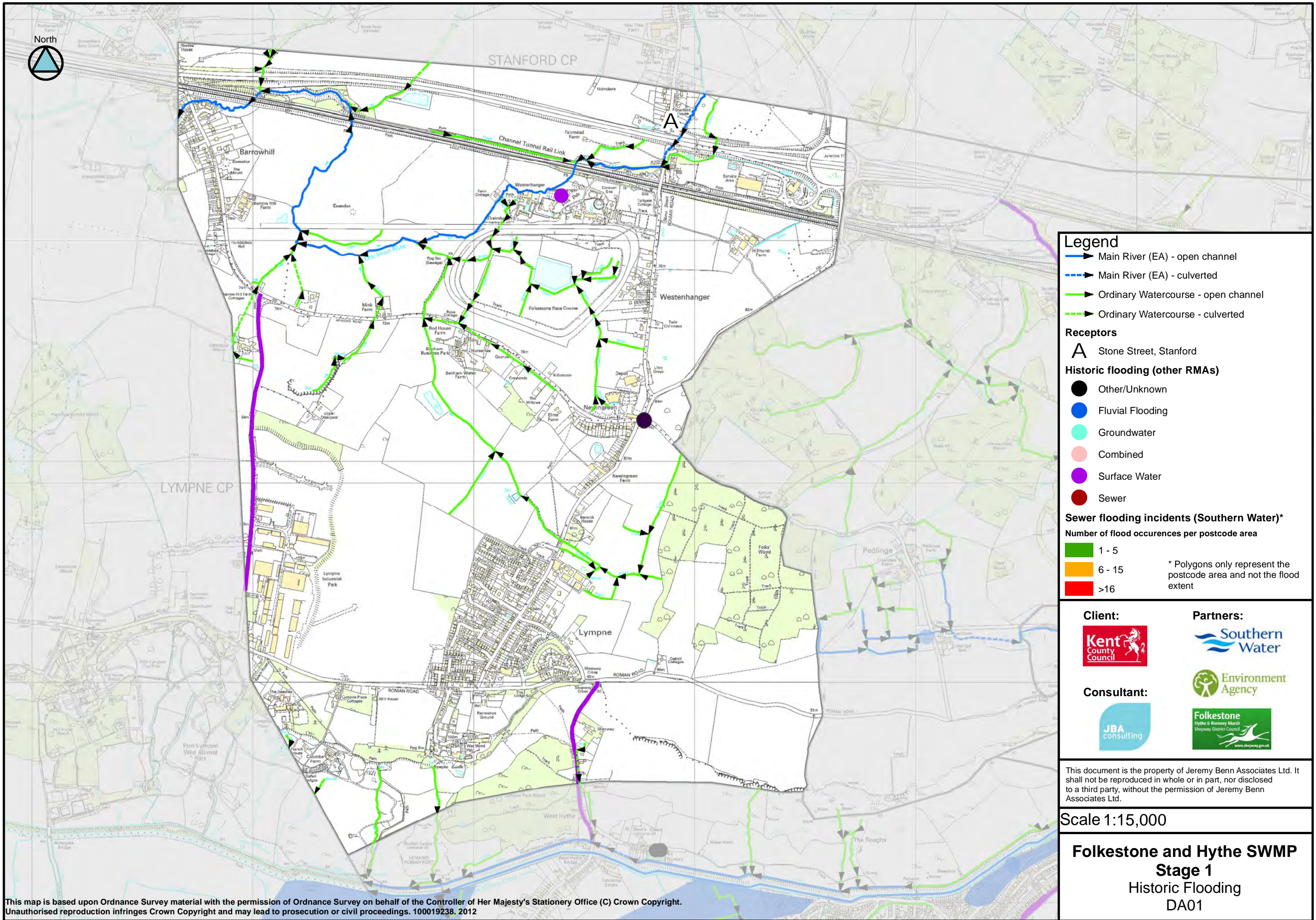


This document is the property of Jeremy Benn Associates Ltd. It shall not be reproduced in whole or in part, nor disclosed to a third party, without the permission of Jeremy Benn Associates Ltd.

Scale 1:15,000

**Folkestone and Hythe SWMP
Stage 1**

Watercourses and Drainage Systems
DA01



This map is based upon Ordnance Survey material with the permission of Ordnance Survey on behalf of the Controller of Her Majesty's Stationery Office (C) Crown Copyright. Unauthorised reproduction infringes Crown Copyright and may lead to prosecution or civil proceedings. 100019238. 2012

Legend

- Main River (EA) - open channel
- Main River (EA) - culverted
- Ordinary Watercourse - open channel
- Ordinary Watercourse - culverted

Receptors

- Stone Street, Stanford

Historic flooding (other RMAs)

- Other/Unknown
- Fluvial Flooding
- Groundwater
- Combined
- Surface Water
- Sewer

Sewer flooding incidents (Southern Water)*

Number of flood occurrences per postcode area

- 1 - 5
- 6 - 15
- >16

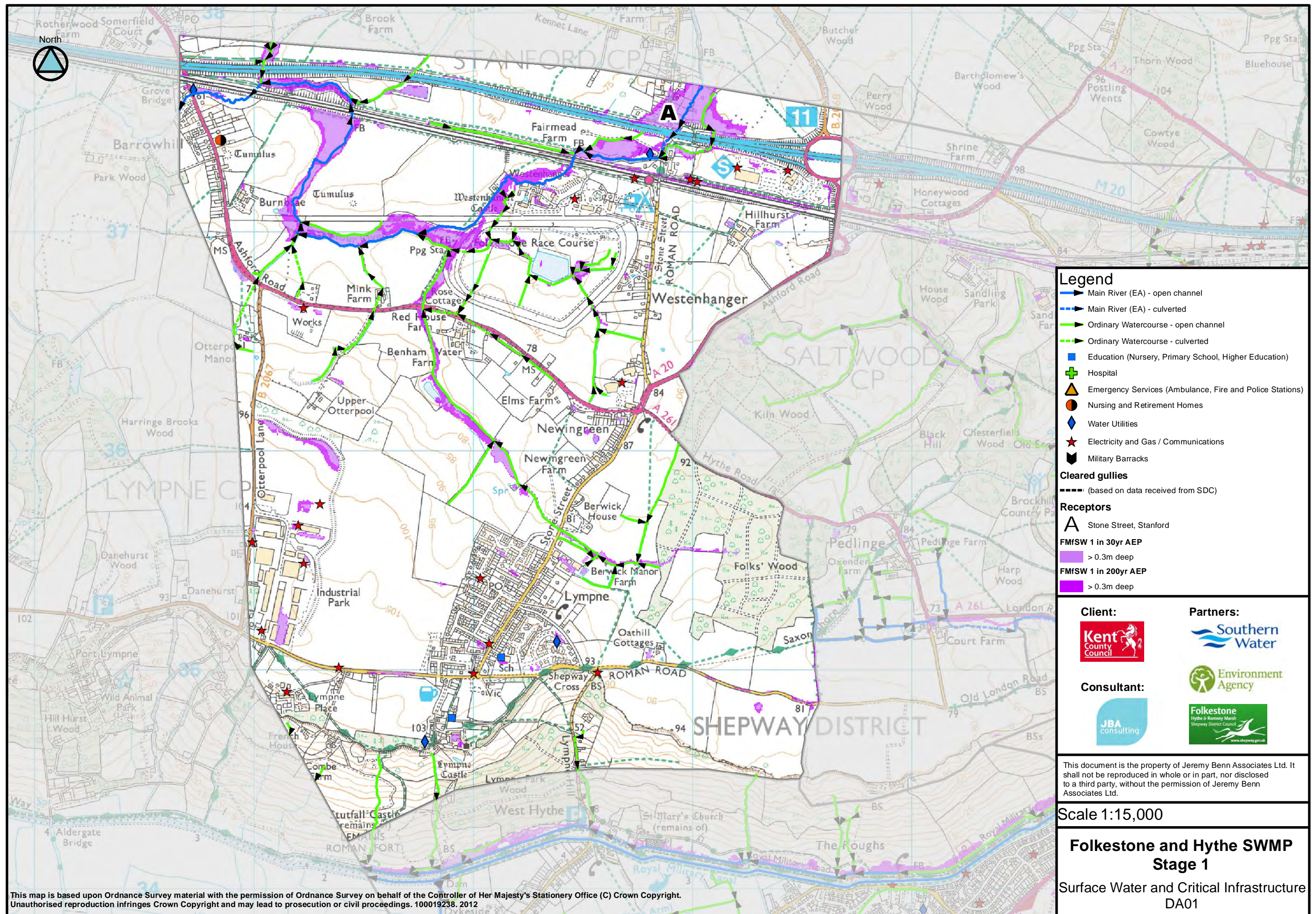
* Polygons only represent the postcode area and not the flood extent

Client:**Partners:****Consultant:**

This document is the property of Jeremy Benn Associates Ltd. It shall not be reproduced in whole or in part, nor disclosed to a third party, without the permission of Jeremy Benn Associates Ltd.

Scale 1:15,000

Folkestone and Hythe SWMP
Stage 1
Historic Flooding
DA01



Legend

- Main River (EA) - open channel
- - - Main River (EA) - culverted
- Ordinary Watercourse - open channel
- - - Ordinary Watercourse - culverted
- Education (Nursery, Primary School, Higher Education)
- ✚ Hospital
- ▲ Emergency Services (Ambulance, Fire and Police Stations)
- Nursing and Retirement Homes
- ◆ Water Utilities
- ★ Electricity and Gas / Communications
- Military Barracks

Cleared gullies

----- (based on data received from SDC)

Receptors

A Stone Street, Stanford

FMfSW 1 in 30yr AEP

> 0.3m deep

FMfSW 1 in 200yr AEP

> 0.3m deep

Client:



Partners:



Consultant:



This document is the property of Jeremy Benn Associates Ltd. It shall not be reproduced in whole or in part, nor disclosed to a third party, without the permission of Jeremy Benn Associates Ltd.

Scale 1:15,000

**Folkestone and Hythe SWMP
Stage 1**

Surface Water and Critical Infrastructure
DA01