

## B.4 DA04 Ramsgate

**Thanet Stage 1 SWMP : Summary and Actions**  
**Drainage Area 04**

**Area overview**

<b>Area (km<sup>2</sup>)</b>	11.4
------------------------------	------

Drainage assets/systems	Type	Known Issues/problems	Responsibility
Sewer network	Sewers (combined, foul and surface water)	Known problems of surcharging at several locations across the drainage area.	Southern Water
IDB Drains	Ordinary Watercourse	A complex network of drains that is prone to both tidal and fluvial flooding.	River Stour IDB
Drain	Ordinary Watercourse	There are no known problems/issues.	KCC / TDC

**Flood risk**

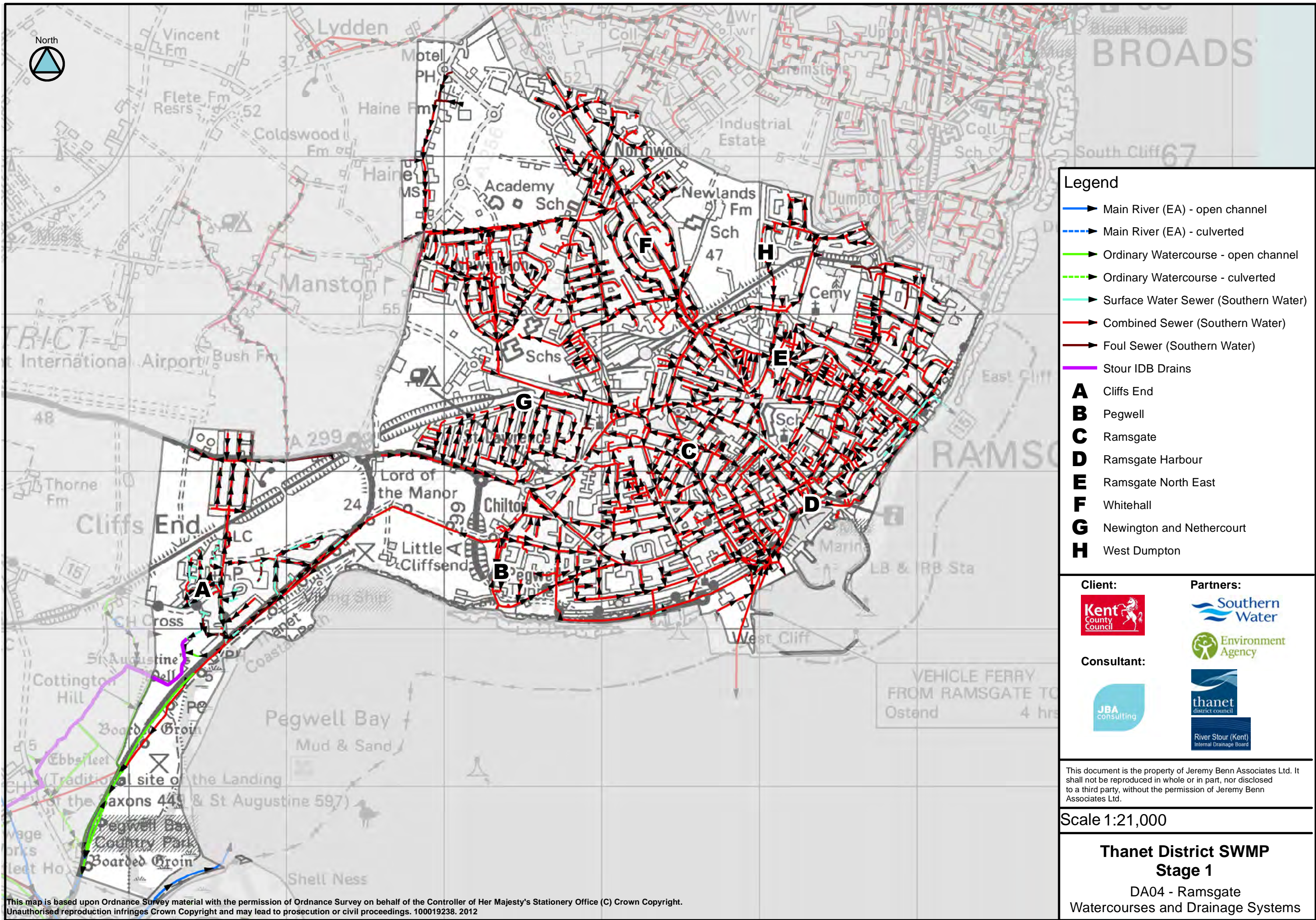
Receptor	Source	Pathway	Historic Evidence
<b>A: Cliffs End</b>	Heavy rainfall resulting in overloaded sewers and surface water run off	Sandwich Road, Earl's Mead and Old Hall Drive are overland flow routes for surface water flows.  Southern Water sewers  Surface water ponds at Delacourt Close, Primrose Way, Foad's Lane and Mount Green Avenue.	Historic evidence has been recorded in this area.  FMfSW 200yr deep
<b>B: Pegwell</b>	Heavy rainfall resulting in overloaded sewers, burst water main and surface water run off	Pegwell Road has historically been a pathway for overland flows (burst water main).  Southern Water sewers  Overland flow comes from the north (Chilton) follows the low spots behind Pegwell Road.	Historic evidence has been recorded in this area.  FMfSW 200yr deep
<b>C: Ramsgate</b>	Heavy rainfall resulting in overloaded sewers, gullies/ drains and surface water run off	Southern Water sewers  Gullies and drains  Surface water has been know to collect on Grange Road, Park Road, and Queens Street  Surface water ponding on Wilfred Road, South Eastern Road, Priory Infant School, Monkton Place, Vale Square and Mill Cottages.	Historic evidence has been recorded in this area.  FMfSW 200yr deep
<b>D: Ramsgate Harbour</b>	Heavy rainfall resulting in overloaded sewers, gullies/ drains and surface water run off	Southern Water sewers  Gullies and drains  Overland surface water flow routes follow Kings Street, York Street, through Ramsgate Police Station into the Marina.	Historic evidence has been recorded in this area.  FMfSW 200yr deep
<b>E: Ramsgate North East</b>	Heavy rainfall resulting in overloaded sewers and surface water run off	Southern Water sewers  St Lukes Avenue and Winstanley Crescent are overland flow routes  Surface water ponding will affect low spots on Dane Park Road, Herson Road and Salisbury Avenue.	Historic evidence has been recorded in this area.  FMfSW 200yr deep
<b>F: Whitehall</b>	Heavy rainfall resulting in overloaded gullies/ drains and surface water run off	Gullies and drains  Overland flow routes follow the valley in this area, roads that may be affected are: Allenby Road, Gywn Road, Nixon Avenue, Colesman Crescent, Bradley Road through the railway embankment.  Localised ponding is shown in the FMfSW at Pullman Close, Whitehall Road, Pinewood Close, Beverly Way, Margate Road and Violet Avenue.	Historic evidence has been recorded in this area.  FMfSW 200yr deep

G: Newington and St Lawrence	Heavy rainfall resulting in surface water run off	Localised ponding in Newington Community Primary School, Windermere Avenue, Eskdale Road and Nethercourt.	FMfSW 200yr deep
H: West Dumpton	Heavy rainfall resulting in surface water run off	Localised surface water ponding, railway embankment may provide a barrier to overland flows.	FMfSW 200yr deep

Summary of Location-specific Actions

Area of benefit	Location of action	Action	Action owner	Priority
Ramsgate Harbour	Newington	From the maps it appears that most of the town’s drains are directed to this area. Investigate, a detailed SWMP in Ramsgate, opportunities for redirecting/storing surface water further out from Ramsgate Harbour, to areas like Newington.	KCC	Short Term





Legend

- ▶ Main River (EA) - open channel
- ▶ Main River (EA) - culverted
- ▶ Ordinary Watercourse - open channel
- ▶ Ordinary Watercourse - culverted
- ▶ Surface Water Sewer (Southern Water)
- ▶ Combined Sewer (Southern Water)
- ▶ Foul Sewer (Southern Water)
- ▶ Stour IDB Drains

- A** Cliffs End
- B** Pegwell
- C** Ramsgate
- D** Ramsgate Harbour
- E** Ramsgate North East
- F** Whitehall
- G** Newington and Nethercourt
- H** West Dutton

Client:



Partners:



Consultant:



This document is the property of Jeremy Benn Associates Ltd. It shall not be reproduced in whole or in part, nor disclosed to a third party, without the permission of Jeremy Benn Associates Ltd.

Scale 1:21,000

Thanet District SWMP  
Stage 1

DA04 - Ramsgate  
Watercourses and Drainage Systems





Legend

- Main River (EA) - open channel
- - Main River (EA) - culverted
- Ordinary Watercourse - open channel
- - Ordinary Watercourse - culverted
- Stour IDB Drains

Receptors

- A** Cliffs End
- B** Pegwell
- C** Ramsgate
- D** Ramsgate Harbour
- E** Ramsgate North East
- F** Whitehall
- G** Newington and Nethercourt
- H** West Dumpton

Historical Flooding (Other RMAs)\*

- Other/Unknown
  - Fluvial
  - Groundwater
  - Combined
  - Surface Water
  - Sewer
  - Tidal
- \* Where an entire road has been highlighted in the historic layer; this does not mean that all the road has flooded in the past but rather no specific location was identified in the records received.

Sewer flooding incidents (Southern Water)\*\*

- Number of flood occurrences per postcode area
- 1 - 3
  - 4 - 7
  - >8
- \*\* Polygons only represent the postcode area and not the flood extent

Client:



Partners:



Consultant:



This document is the property of Jeremy Benn Associates Ltd. It shall not be reproduced in whole or in part, nor disclosed to a third party, without the permission of Jeremy Benn Associates Ltd.

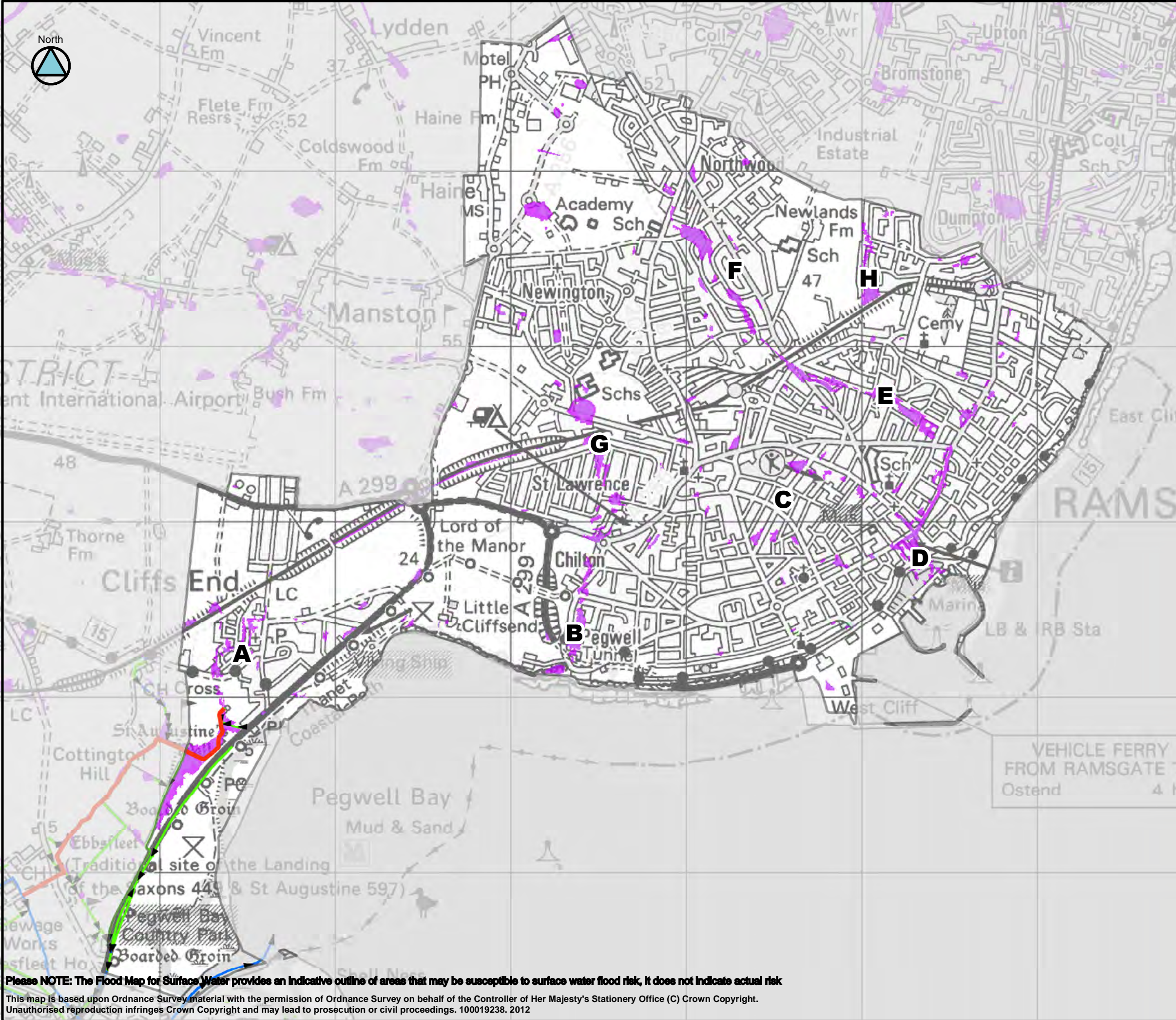
Scale 1:21,000

Thanet District SWMP  
Stage 1

DA04 - Ramsgate  
Historic Flooding

This map is based upon Ordnance Survey material with the permission of Ordnance Survey on behalf of the Controller of Her Majesty's Stationery Office (C) Crown Copyright. Unauthorised reproduction infringes Crown Copyright and may lead to prosecution or civil proceedings. 100019238. 2012





Legend

- Main River (EA) - open channel
- - - Main River (EA) - culverted
- Ordinary Watercourse - open channel
- - - Ordinary Watercourse - culverted
- Stour IDB Drains
- Education
- ✚ Healthcare and Medical Services
- ▲ Emergency Services
- Nursing, Retirement and Rest Homes
- ◆ Water Utilities
- ★ Electricity and Gas / Communications
- Military

Receptors

- A** Cliffs End
- B** Pegwell
- C** Ramsgate
- D** Ramsgate Harbour
- E** Ramsgate North East
- F** Whitehall
- G** Newington and Nethercourt
- H** West Dumps

FMfSW 1 in 30yr AEP

> 0.3m deep

FMfSW 1 in 200yr AEP

> 0.3m deep

Client:



Partners:



Consultant:



This document is the property of Jeremy Benn Associates Ltd. It shall not be reproduced in whole or in part, nor disclosed to a third party, without the permission of Jeremy Benn Associates Ltd.

Scale 1:21,000

Thanet District SWMP  
Stage 1

DA04 - Ramsgate  
Surface Water and Critical Infrastructure

Please NOTE: The Flood Map for Surface Water provides an indicative outline of areas that may be susceptible to surface water flood risk, It does not indicate actual risk  
This map is based upon Ordnance Survey material with the permission of Ordnance Survey on behalf of the Controller of Her Majesty's Stationery Office (C) Crown Copyright.  
Unauthorised reproduction infringes Crown Copyright and may lead to prosecution or civil proceedings. 100019238. 2012