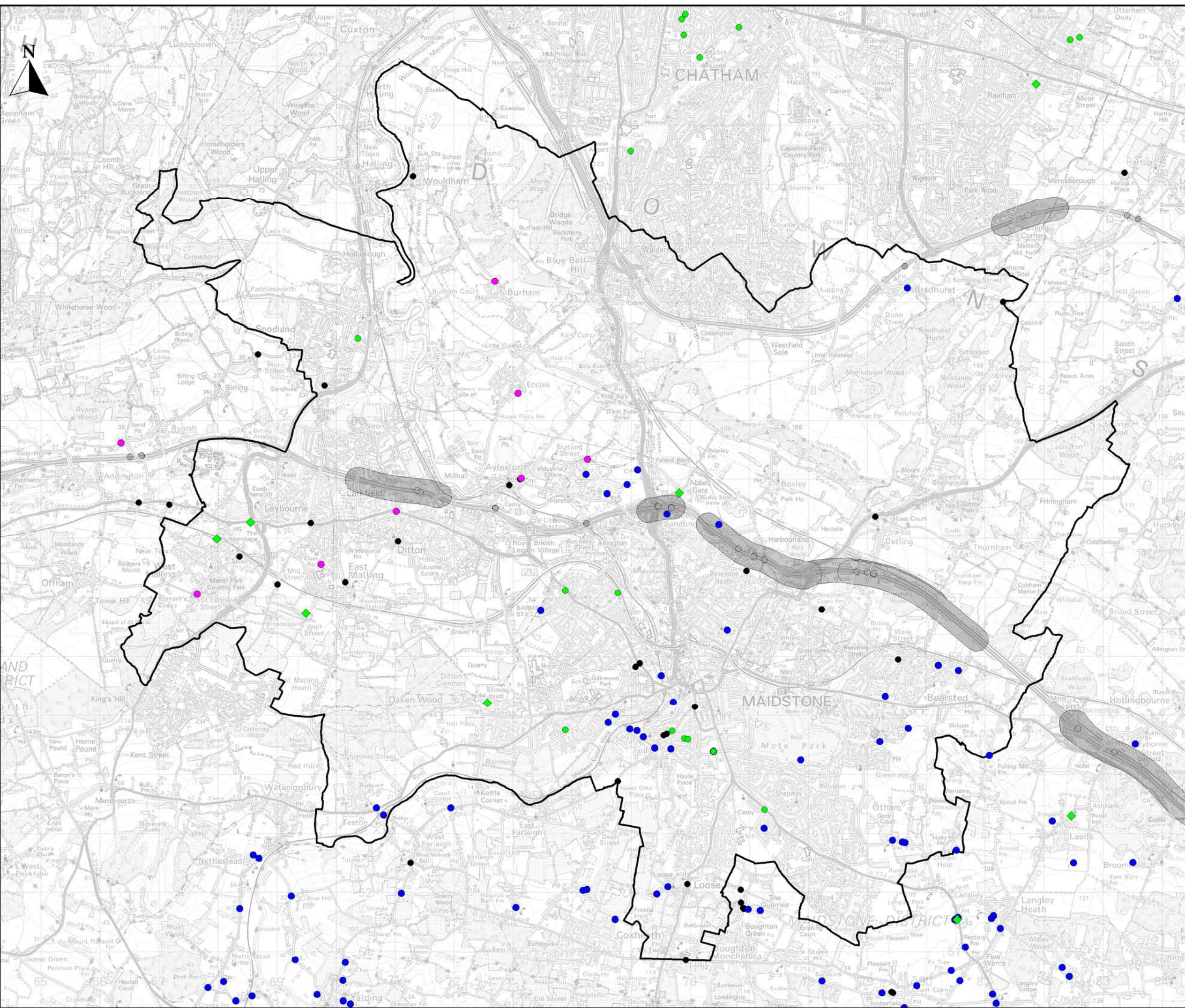


Appendix F – Maps



Location Plan :



Legend

- KCC Highways Flooding
- Highways Agency Flooding
- Highways Agency Flooding Hotspot
- MBC Flooding Incidents
- TMBC Flooding Incidents
- Southern Water Flooding Records
- ◆ Southern Water Flooding Hotspots

This map is reproduced from Ordnance Survey material with the permission of Ordnance Survey on behalf of the Controller of Her Majesty's Stationery Office © Crown copyright. Unauthorised reproduction infringes Crown copyright and may lead to prosecution or civil proceedings. Kent County Council 100019238, (2012).

Halcrow

www.halcrow.com

Halcrow Group Limited
A CH2M HILL Company
3rd Floor, Elms House,
43 Brook Green, Hammersmith,
London W6 7EF



Invicta House,
County Hall,
Maidstone, Kent,
ME14 1XX

Project :

**Maidstone & Malling Surface
Water Management Plan**

Drawing :

**Historic Surface Water
Flooding Records**

Drawn By : MK	Date : 12 June 2012
Checked By : OE	Date : 12 June 2012
Approved By : BV	Date : 12 June 2012

Drawing No. :

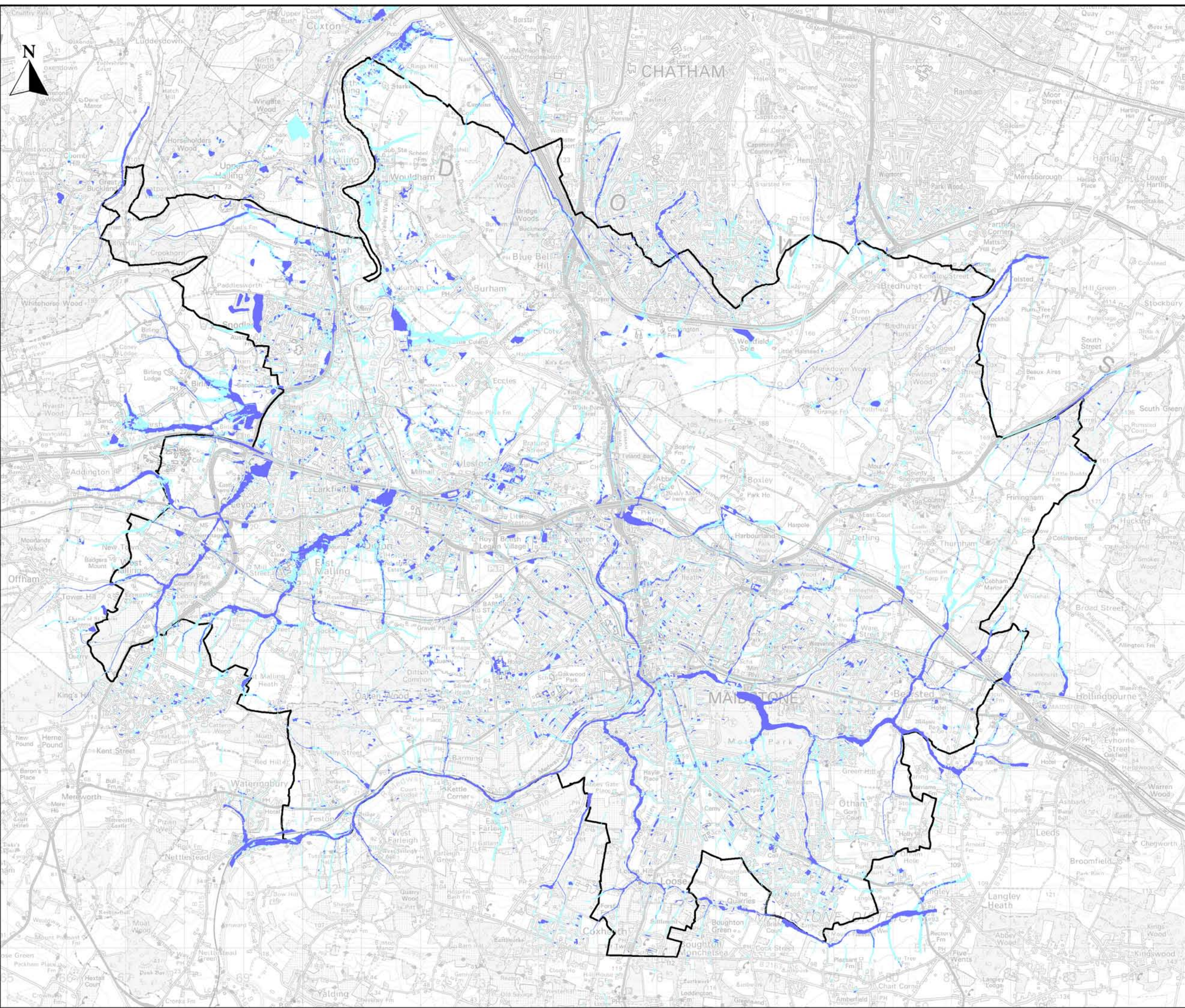
Map 1

Revision :

A

Drawing Scale : 1:60,000

Plot Scale : 1:60000 @ A3



Location Plan :



Legend

- EA FMfSW 0.3m + deep
- EA FMfSW 0.1 - 0.3m deep

This map is reproduced from Ordnance Survey material with the permission of Ordnance Survey on behalf of the Controller of Her Majesty's Stationery Office © Crown copyright. Unauthorised reproduction infringes Crown copyright and may lead to prosecution or civil proceedings. Kent County Council 100019238, (2012).



www.halcrow.com

Halcrow Group Limited
A CH2M HILL Company
3rd Floor, Elms House,
43 Brook Green, Hammersmith,
London W6 7EF



Invicta House,
County Hall,
Maidstone, Kent,
ME14 1XX

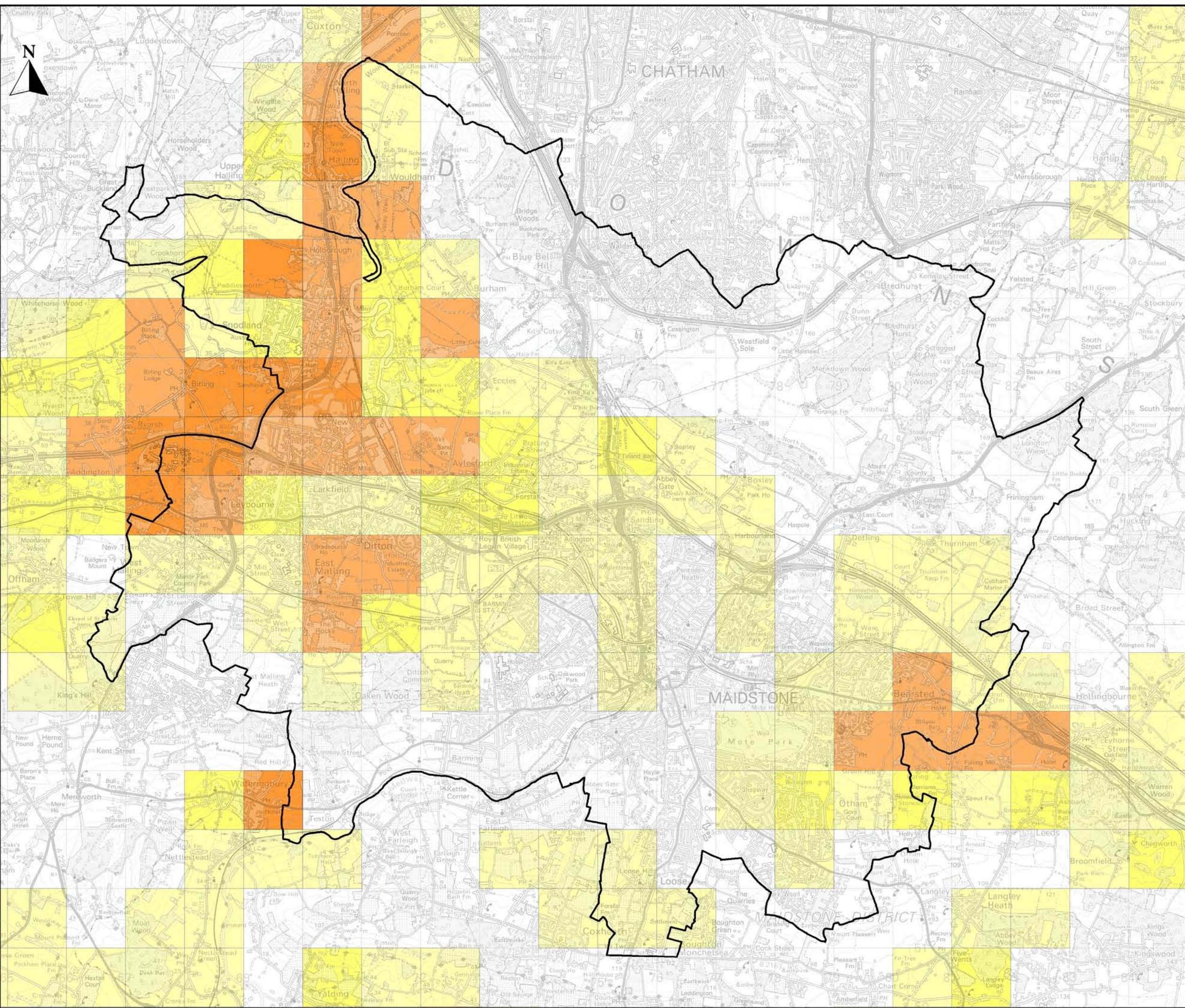
Project :
Maidstone & Malling Surface Water Management Plan

Drawing :
**Environment Agency's FMfSW
1 in 200 year Rainfall Event**

Drawn By : MK	Date : 12 June 2012
Checked By : OE	Date : 12 June 2012
Approved By : BV	Date : 12 June 2012

Drawing No. : Map 2	Revision : A
-------------------------------	------------------------

Drawing Scale : 1:60,000 Plot Scale : 1:60000 @ A3



Location Plan :



Legend

EA ASTGWF, proportion of each 1 km sq susceptible to groundwater flooding :

- < 25 %
- 25 - 50 %
- 50 - 75 %
- > 75 %

This map is reproduced from Ordnance Survey material with the permission of Ordnance Survey on behalf of the Controller of Her Majesty's Stationery Office © Crown copyright. Unauthorised reproduction infringes Crown copyright and may lead to prosecution or civil proceedings. Kent County Council 100019238, (2012).



www.halcrow.com

Halcrow Group Limited
A CH2M HILL Company
3rd Floor, Elms House,
43 Brook Green, Hammersmith,
London W6 7EF



Invicta House,
County Hall,
Maidstone, Kent,
ME14 1XX

Project :
Maidstone & Malling Surface Water Management Plan

Drawing :
Environment Agency's Areas Susceptible to Ground Water Flooding

Drawn By : MK	Date : 12 June 2012
Checked By : OE	Date : 12 June 2012
Approved By : BV	Date : 12 June 2012
Drawing No. : Map 3	Revision : A
Drawing Scale : 1:60,000	Plot Scale : 1:60000 @ A3