

## **B.9 DA09 Folkestone, Lower Leas and Mill Point**

**Folkestone and Hythe Stage 1 SWMP : Summary and Actions**  
**Drainage Area 09**

**Area overview**

**Area (km<sup>2</sup>)** 5

| Drainage assets/systems  | Type                                | Known Issues/problems   | Responsibility     |
|--------------------------|-------------------------------------|---|--------------------|
| Pent Stream (in culvert) | Main River                          | History of manholes along the Pent Stream culvert surcharging along Tontine Street flowing towards the Harbour Approach. Also of flooding coming along Foord Road North underneath the Viaduct. | Environment Agency |
| Sewer network            | Sewers (combined and surface water) | Known problems of surcharging at numerous locations across the drainage area.   | Southern Water     |

**Flood risk**

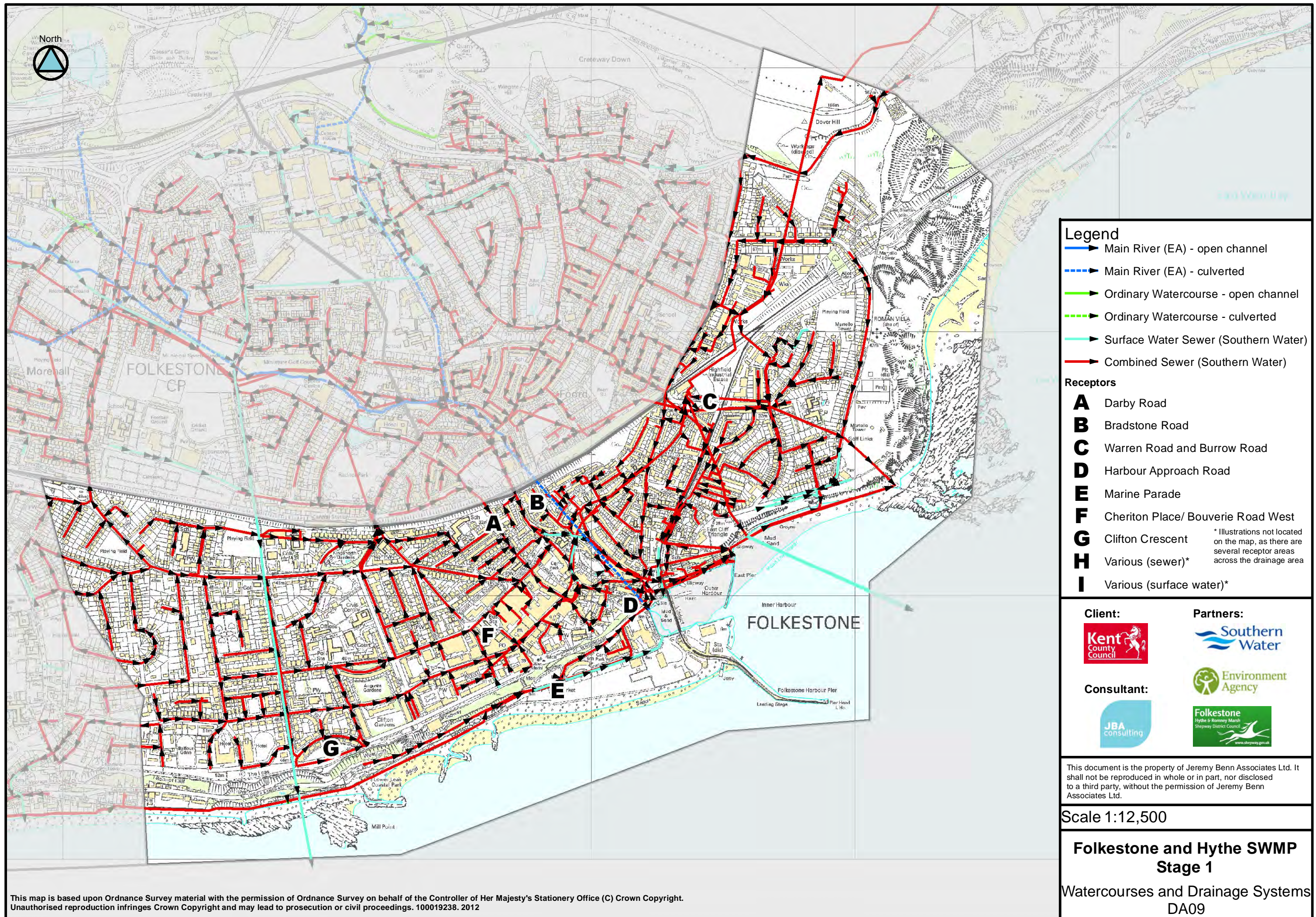
| Receptor                              | Source   | Pathway  | Historic Evidence   |
|---------------------------------------|--|--|---|
| <b>A: Darby Road</b>                  | Heavy rainfall resulting in overloaded sewers and surface water ponding                            | Southern Water Sewers<br><br>Surface water ponds in gardens behind Darby Road  | Southern Water records show this has flooded in the past due to overloaded sewers.  |
| <b>B: Bradstone Road</b>              | Heavy Rainfall resulting in surface water overland flows. Fluvial flows from Pent Stream           | Overland flows from the north west covering Bradstone road, potentially from surface water and fluvial sources   | There are no historic records of flooding in this area  |
| <b>C: Warren Road and Burrow Road</b> | Heavy Rainfall causing surcharging of sewers and potential surface water overland flows            | Southern Water Sewers<br><br>Surface water flow paths down the eastern line of the viaduct in a south west direction flowing behind properties on Thanet Gardens, towards Warren Road where there is dip. The flow path follows the line of the Viaduct through Burrow road and along Dudley and Dyke Road where it discharges into the Harbour. | There is cluster of historic records of sewer flooding in the area (Southern Water).<br><br>Records from the SDC SFRA records also describe this area flooding from a 1 in 500 yr fluvial event, this maybe an error in the classification of source within the historic records, source is potentially from surface water. |
| <b>D: Harbour Approach Road</b>       | Heavy Rainfall resulting in surcharging of sewers and runoff, Pent Stream culvert fluvial flooding | Southern Water Sewers<br><br>The overland flow route is south east to the Harbour Approach Road. The pathway follows the topography of the land.   | Pent Stream culvert known to have surcharged in this area historically. (1996)<br>Southern Water records incidents of hydraulic overload.   |
| <b>E: Marine Parade</b>               | Heavy Rainfall, blocked drains and high tide resulting in surcharging of sewers and runoff.        | Southern Water Sewers<br><br>Surface water ponding on Marine Parade and Sandgate Road.   | Southern Water records show this has flooded in the past due to overloaded sewers.<br><br>Records from the SDC SFRA records also describe this area flooding from a 1 in 500 yr fluvial event, this maybe an error in the classification of source within the historic records, source is potentially from surface water.   |

|   |  |   |   |
|---|--|---|---|
| <b>F:Cheriton Place/ Bouverie Road West</b> | Heavy Rainfall resulting in surcharged sewers and run off                            | Southern Water Sewers<br><br>Surface water ponding around Bouverie Square and West Terrace. | Southern Water records show this has flooded in the past due to overloaded sewers.<br><br>Records from the SDC SFRA records also describe this area flooding from a 1 in 500 yr fluvial event, this maybe an error in the classification of source within the historic records, source is potentially from surface water. |
| <b>G:Clifton Crescent</b>                   | Heavy Rainfall resulting in surcharged sewers and run off                            | Southern Water Sewers   | Southern Water records show this has flooded in the past due to overloaded sewers.  |
| <b>H: Various (sewer)</b>                   | Heavy Rainfall, high tide and faulty non return valves result in surcharge of Sewers | Southern Water Sewers   | Southern Water records indicate historic flooding within DA09   |
| <b>I: Various (surface water)</b>           | Heavy Rainfall resulting in runoff   | Ponding in low spots and overland flow routes similar to those of fluvial routes.           | FMISW 1 in 200 yr (deep)  |

#### Summary of Location-specific Actions

| Area of benefit       | Location of action    | Action   | Action owner | Priority    |
|-----------------------|-----------------------|--|--------------|-------------|
| Harbour Approach Road | Harbour Approach Road | Investigate opportunities to improve property resilience for properties historically effected by surcharged sewers.  | KCC/SDC      | Medium Term |
| Marine Parade         | Marine Parade         | Consider use of green infrastructure or localised measures (kerbing, minor bunding, signage etc) to improve management of surface water during intense rainfall. | KCC          | Short term  |
| Clifton Crescent      | Clifton Crescent      | Consider use of green infrastructure or localised measures (kerbing, minor bunding, signage etc) to improve management of surface water during intense rainfall. | KCC, SDC     | Short term  |





**Legend**

- > Main River (EA) - open channel
- - -> Main River (EA) - culverted
- > Ordinary Watercourse - open channel
- - -> Ordinary Watercourse - culverted
- > Surface Water Sewer (Southern Water)
- > Combined Sewer (Southern Water)

**Receptors**

- A** Darby Road
- B** Bradstone Road
- C** Warren Road and Burrow Road
- D** Harbour Approach Road
- E** Marine Parade
- F** Cheriton Place/ Bouverie Road West
- G** Clifton Crescent
- H** Various (sewer)\*
- I** Various (surface water)\*

\* Illustrations not located on the map, as there are several receptor areas across the drainage area

**Client:**

**Partners:**

**Consultant:**

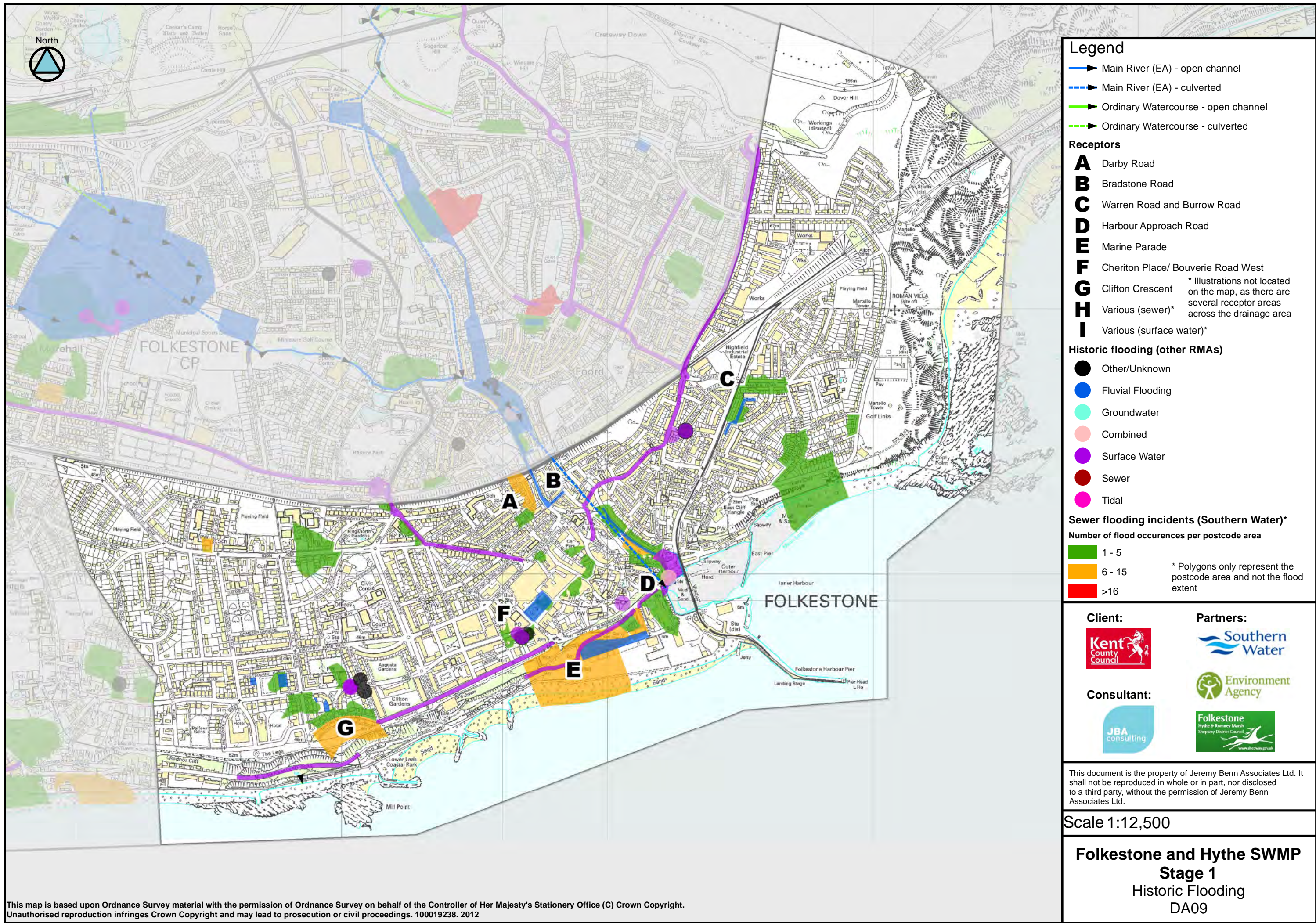
This document is the property of Jeremy Benn Associates Ltd. It shall not be reproduced in whole or in part, nor disclosed to a third party, without the permission of Jeremy Benn Associates Ltd.

Scale 1:12,500

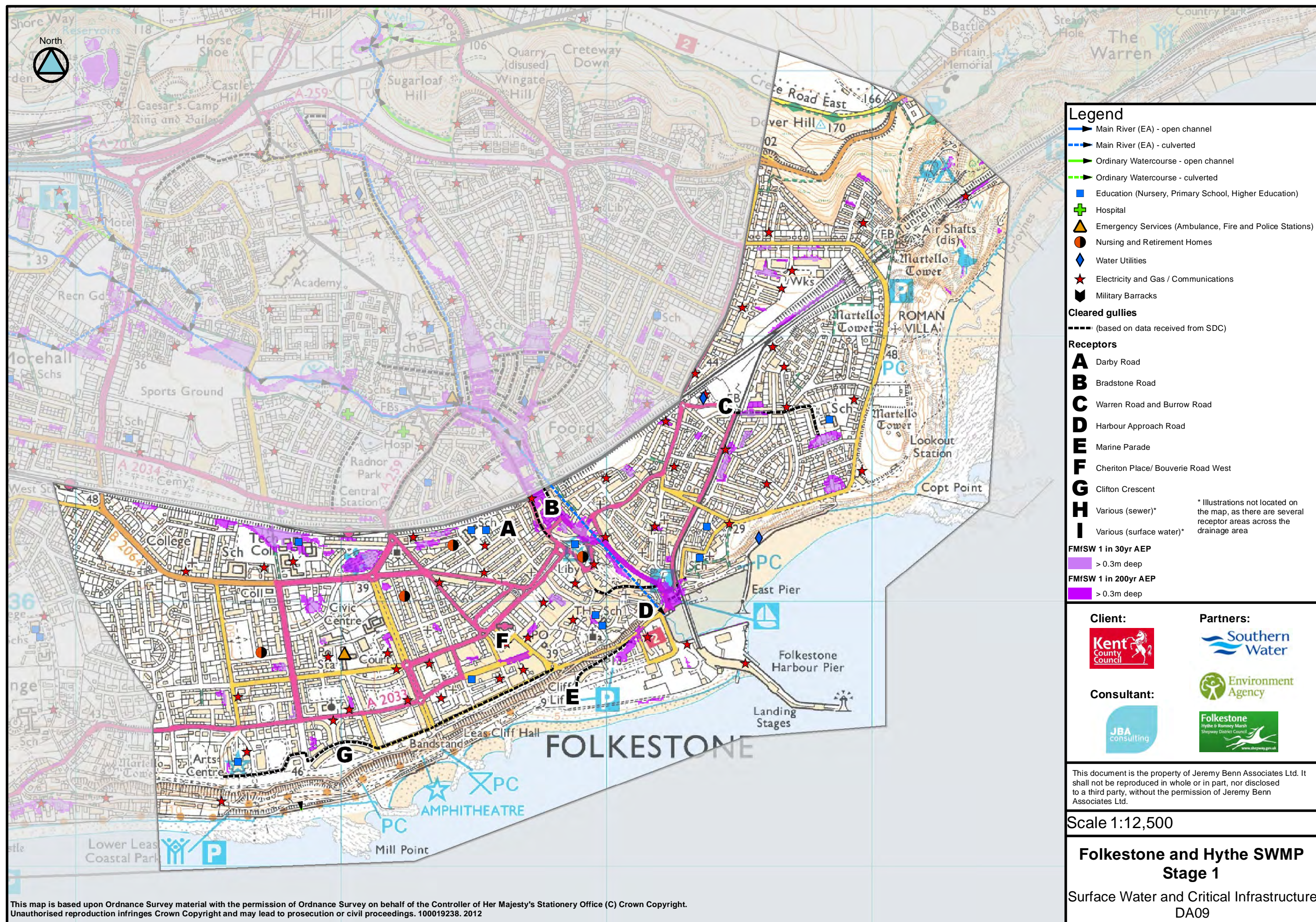
**Folkestone and Hythe SWMP  
Stage 1**

Watercourses and Drainage Systems  
DA09









## Legend

- Main River (EA) - open channel
- - - Main River (EA) - culverted
- Ordinary Watercourse - open channel
- - - Ordinary Watercourse - culverted
- Education (Nursery, Primary School, Higher Education)
- ⛶ Hospital
- 🚒 Emergency Services (Ambulance, Fire and Police Stations)
- 🏠 Nursing and Retirement Homes
- 💧 Water Utilities
- ⚡ Electricity and Gas / Communications
- 🏢 Military Barracks

## Cleared gullies

- - - (based on data received from SDC)

## Receptors

- A** Darby Road
- B** Bradstone Road
- C** Warren Road and Burrow Road
- D** Harbour Approach Road
- E** Marine Parade
- F** Cheriton Place/ Bouverie Road West
- G** Clifton Crescent
- H** Various (sewer)\*
- I** Various (surface water)\*

\* Illustrations not located on the map, as there are several receptor areas across the drainage area

## FMfSW 1 in 30yr AEP

— > 0.3m deep

## FMfSW 1 in 200yr AEP

— > 0.3m deep

## Client:



## Partners:



## Consultant:



This document is the property of Jeremy Benn Associates Ltd. It shall not be reproduced in whole or in part, nor disclosed to a third party, without the permission of Jeremy Benn Associates Ltd.

Scale 1:12,500

## Folkestone and Hythe SWMP Stage 1

Surface Water and Critical Infrastructure  
DA09