

B.2 DA02 Birchington and Margate

Thanet Stage 1 SWMP : Summary and Actions
Drainage Area 02

Area overview

Area (km²) 19.2

Drainage assets/systems	Type	Known Issues/problems	Responsibility
Sewer network	Sewers (combined, foul and surface water)	Known problems of surcharging at numerous locations across the drainage area.	Southern Water

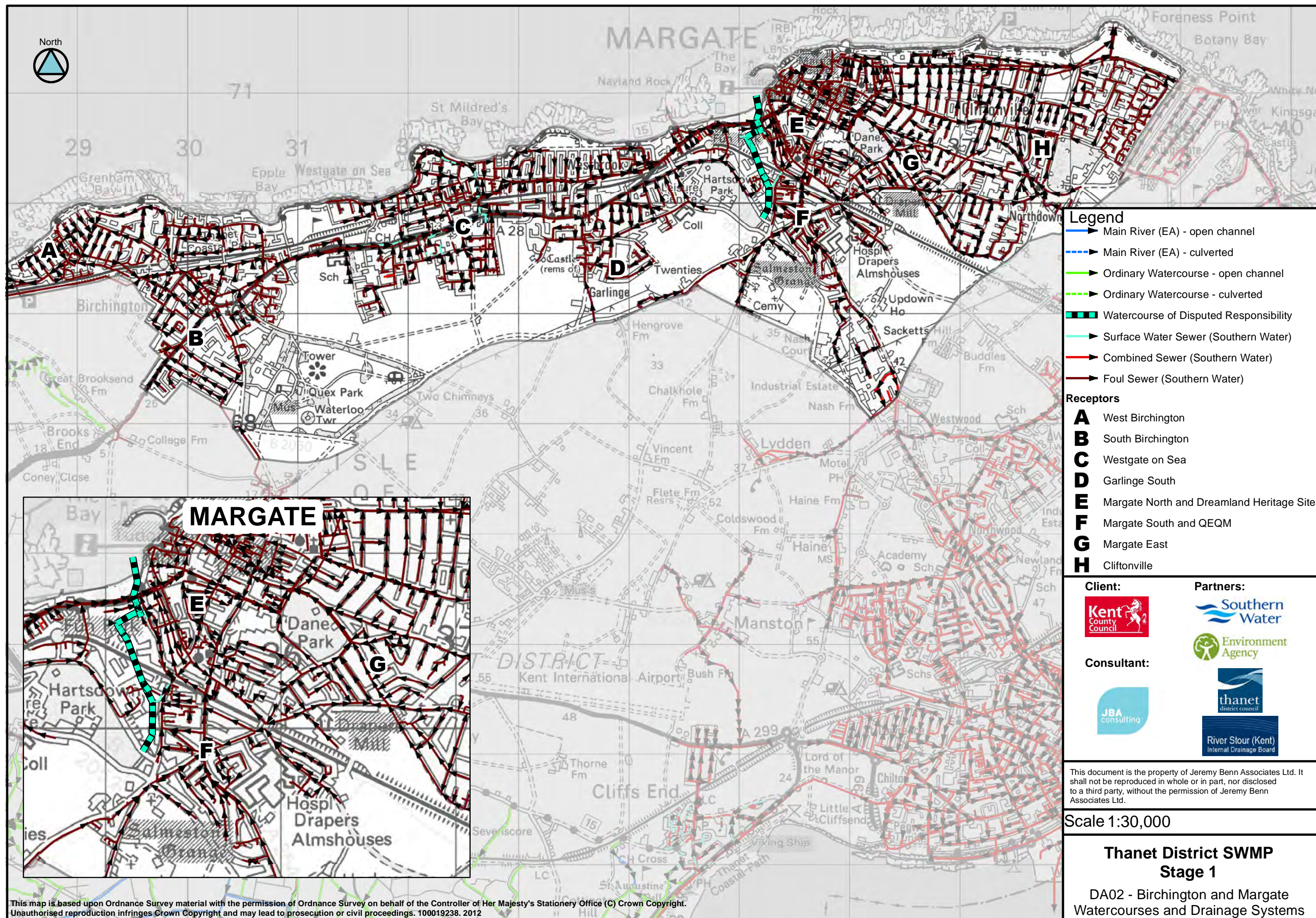
Flood risk

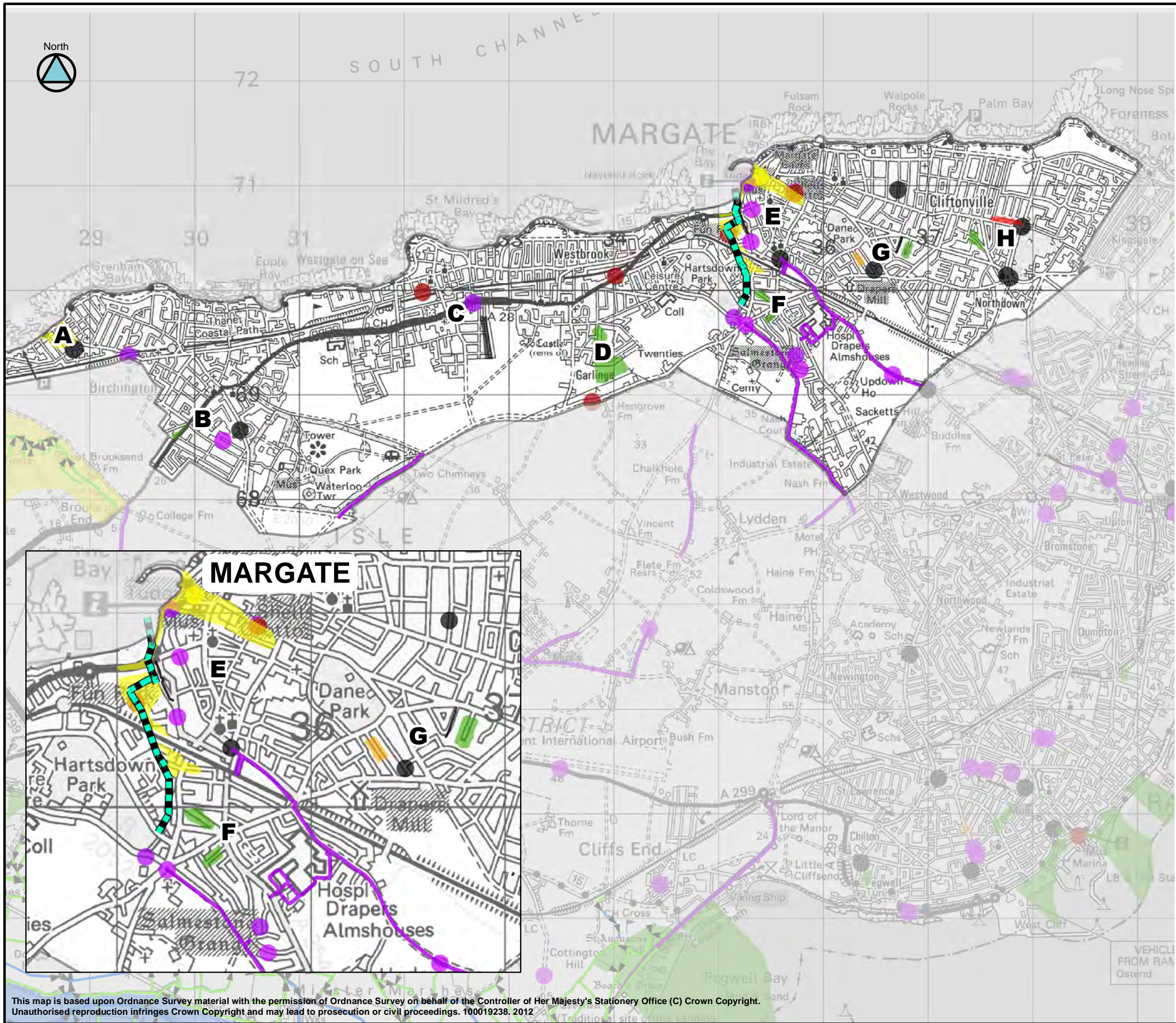
Receptor	Source	Pathway	Historic Evidence
A: West Birchington	Wave overtopping Heavy rainfall resulting in overloaded gullies and surface water run off.	Wave overtopping/ breaching of flood defences ponds in Canute Road, Arthur Road, King's Avenue and the Parade. Gullies and drains Overland flow routes from Dane Road are directed north west towards the coast.	There is historic evidence to support flooding from wave overtopping, breaching of defences and from surface water. FMfSW 200yr (deep)
B: South Birchington	Heavy rainfall resulting in overloaded sewers, gullies and surface water run off.	Southern Water sewers Gullies and drains Overland flow routes flow north west. Holton Close, Grounds of Birchington Primary School, Kings Road, Mill Row, Essex Gardens, Manor Drive, Lancaster Gardens and Devon Gardens are estimated to be impacted and considered areas where ponding would occur by the FMfSW (1 in 200yr deep).	There is historic evidence to support flooding from sewers, overloaded gullies and surface water runoff. FMfSW 200yr (deep)
C: Westgate on Sea	Heavy rainfall resulting in overloaded sewers and surface water run off.	Southern Water sewers Overland flow routes flow north towards the coast. Belmont Road is a pathway for surface water flows. Ponding has been estimated to occur on the golf course, St Crispian Road, St Augustine's College, Elm Grove and Mordmaunt Avenue, St Saviours School and Cedric Road	There is historic evidence to support flooding from sewers and from surface water. FMfSW 200yr (deep)
D: Garlinge South	Heavy rainfall resulting in overloaded sewers.	Southern Water sewers	There is historic evidence to support flooding from sewers.
E: Margate North and Dreamland Heritage Site	Wave overtopping Heavy rainfall resulting in overloaded sewers, gullies and surface water run off .	Wave overtopping and breaching of existing defences results in tidal flows extending from the parade to as far as Victoria Road. In addition, wave overtopping has caused ponding in the Dreamland Heritage Site, under the railway to Tivoli Banks. Southern Water sewers KCC Highways gullies and drains	There has been recorded incidents of flooding from the sea, blocked gullies, sewers and surface water run off .
F: Margate South and QEQM	Wave overtopping Heavy rainfall resulting in overloaded sewers, gullies and surface water run off.	Wave overtopping and breaching of defences results in overland flows from the north under the railway and ponding in Tivoli Banks and Malborough Road. Southern Water sewers KCC Highways gullies and drains St Peter's Road and Nash Road are historically pathways for surface water. The FMfSW (1 in 200yr deep) describe the overland routes extending south to north, beginning uphill of Nash Court and following the valley past, Farley Road, Nash Lane, St Andrews Close, Nash Court, St Anne's Gardens, Salmestone Road Salmestone Rise, Helena Ave, Alexandra Road, Gladstone Road and Malborough Road.	There are recorded incidents of surface water flooding and sewer flooding in this area FMfSW 200yr (deep)

G: Margate East	Heavy rainfall resulting in overloaded sewers, blocked gully and surface water run off.	Southern Water sewers Gullies and drains Ponding of surface water in Hastings Avenue, Glencoe Road, College Road and Dane Valley Road.	There has been recorded incidents of flooding from the sea, blocked gullies and sewers. FMfSW 200yr (deep)
H: Cliftonville	Heavy rainfall resulting in overloaded sewers and surface water run off.	Southern Water sewers Northdown Road is recorded as a pathway for surface water flows. The FMfSW highlights ponding in Holly Lane, Offley Close and Northdown Close.	There has been recorded incidents of flooding from surface water and sewers at Cuthbert Road. FMfSW 200yr (deep)

Summary of Location-specific Actions

Area of benefit	Location of action	Action	Action owner	Priority
West Birchington	Dane Road	1. A CCTV study to investigate the condition of drains and gullies on Dane Road 2. Improving conveyance through maintenance of local gullies.	KCC and KCC Highways	1. Quick Win 2. Medium to Long Term
South Birchington	Kings Road	Install green infrastructure or localised measures (sunken roundabouts, kerbing, minor bunding, signage etc) to improve management of surface water during intense rainfall.	KCC and KCC Highways	Medium Term
Margate South (including QEQM)	Nash Road	A study to investigate the condition of drainage infrastructure on Nash road	KCC and KCC Highways	Medium to Long Term
Margate South (including QEQM)	St Peters Road QEQM, Cricket Grounds	Consider use of green infrastructure or localised measures (kerbing, minor bunding, signage, fringe interception etc) in the upper catchment to improve management of surface water during intense rainfall.	KCC and KCC Highways	Short Term
Margate South (including QEQM)	Tivoli Brook	Define which partner/ group has the ownership and responsibility of which partner/ group of the Tivoli Brook	All	Quick Win
Cliftonville	Northdown Road	Install green infrastructure or localised measures (sunken roundabouts, kerbing, minor bunding, signage etc) to improve management of surface water during intense rainfall.	KCC and KCC Highways	Medium Term





Legend

- Main River (EA) - open channel
- Main River (EA) - culverted
- Ordinary Watercourse - open channel
- Ordinary Watercourse - culverted
- Watercourse of Disputed Responsibility

Receptors

- A** West Birchington
- B** South Birchington
- C** Westgate on Sea
- D** Garlinge South
- E** Margate North and Dreamland Heritage Site
- F** Margate South and QEOM
- G** Margate East
- H** Cliftonville

Historical Flooding (Other RMAs)*

- Other/Unknown
- Fluvial
- Groundwater
- Combined
- Surface Water
- Sewer
- Tidal

* Where an entire road has been highlighted in the historic layer; this does not mean that all the road has flooded in the past but rather no specific location was identified in the records received.

Sewer flooding incidents (Southern Water)**

Number of flood occurrences per postcode area

- 1 - 3
- 4 - 7
- >8

** Polygons only represent the postcode area and not the flood extent

Client:



Partners:



Consultant:



This document is the property of Jeremy Benn Associates Ltd. It shall not be reproduced in whole or in part, nor disclosed to a third party, without the permission of Jeremy Benn Associates Ltd.

Scale 1:35,000

Thanet District SWMP Stage 1

DA02 - Birchington and Margate
Historic Flooding

