

B.7 DA07 Folkestone, Castle Hill and Morehall

Folkestone and Hythe Stage 1 SWMP : Summary and Actions
Drainage Area 07

Area overview

Area (km²) 3.2

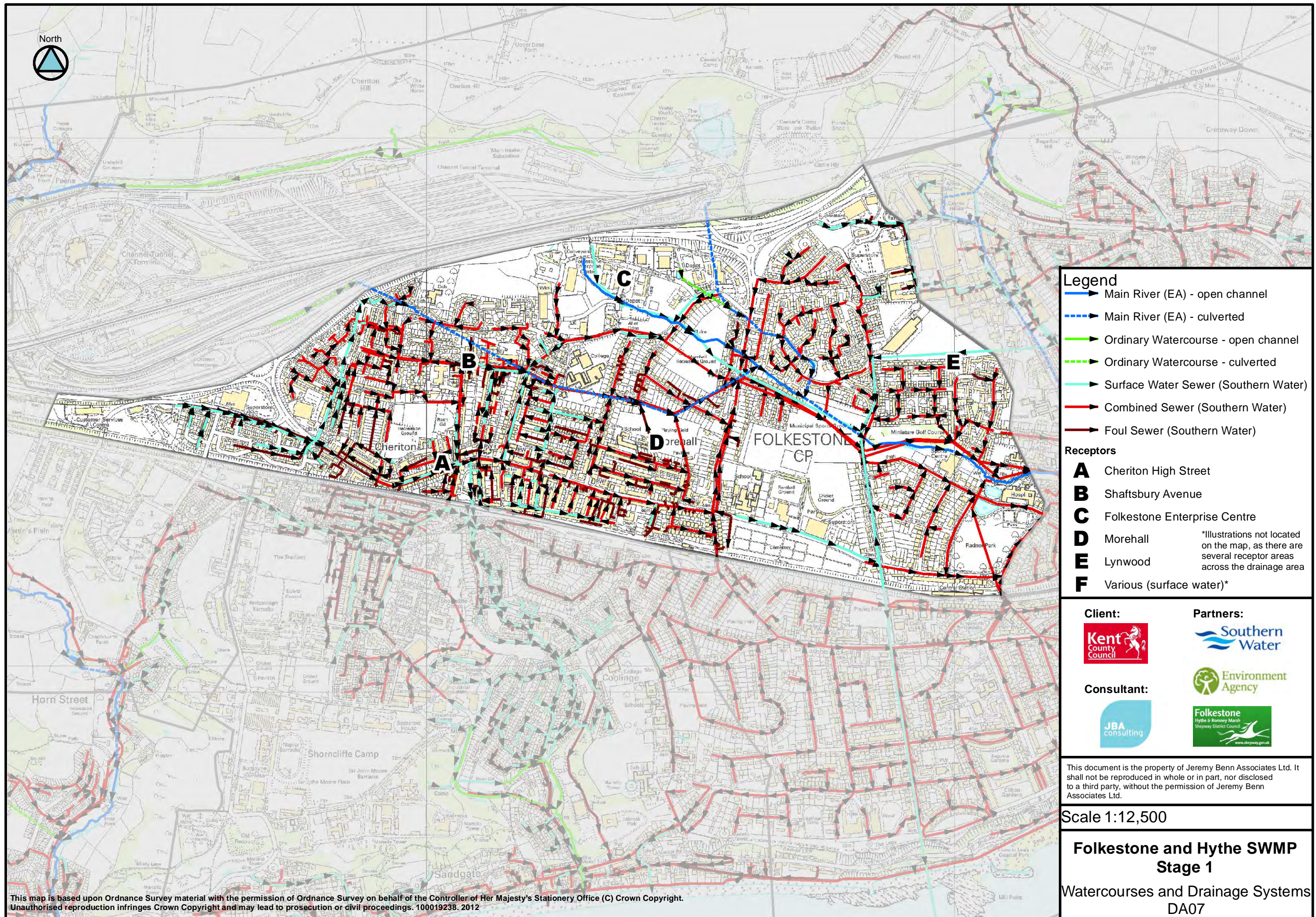
Drainage assets/systems	Type	Known Issues/problems	Responsibility
Pent A, B and C and Main Pent Stream	Main River	History of flooding at Morehall Recreation Grounds Folkstone, where the tributaries converge.	Environment Agency
Unnamed Drain (culverted)	Ordinary Watercourse	No known issues	Kent County Council
Sewer network	Sewers (combined, foul and surface water)	Known problems of surcharging at numerous locations across the drainage area.	Southern Water

Flood risk

Receptor	Source	Pathway	Historic Evidence
A: Cheriton High Street	Heavy rainfall resulting in surcharging of Sewers and/or Gullies and runoff. Sewers surcharge also due to faulty non return valve.	Southern Water Sewers Surface water runoff may result in localised ponding on Cheriton High Street, Stanley Road and Broomfield Road. Blocked gully on Stanley Road result in flows following Stanley Road north.	Records from Southern Water show that this area has had incidents of flooding from overloaded sewers
B: Shaftsbury Avenue	Heavy rainfall resulting in surcharging of sewers and runoff. Fluvial sources from the Pent Stream.	Southern Water Sewers Fluvial and surface water flow routes come the north west and affect Biggins Wood Avenue, Woodfield Close and Shaftsbury Avenue.	Southern water records show that the area has flooded in the past due to overloaded sewers. No historic records of risk from fluvial or surface water, although national mapping suggests risk is high
C: Folkestone Enterprise Centre	Heavy rainfall resulting in localised ponding	Surface water ponds within the Folkestone Enterprise Centre.	There are no historic records to support this potential issue.
D: Morehall	Heavy rainfall resulting in surcharging of sewers and runoff. Fluvial sources from the Pent Stream.	Southern Water Sewers Main flow routes come from the north west and are carried via the Pent A, B and C. The main area of risk is where the tributaries converge to form the Pent Main Stream. Overland pathways for fluvial and surface water run off, flow south west and include, Cherry Gardens, Fairway Avenue, Cherry Garden Avenue and Morehall Recreation Ground.	Historic flooding has occurred from fluvial sources. Records from Southern Water also show that sewers have overloaded and flooded properties in the past, and surface water runoff issues have also been recorded in this area
E: Lynwood	Heavy rainfall resulting in runoff.	Runoff flows from Folkestone Academy's playing fields south towards Lynwood.	Historic flooding has been recorded by Shepway District Council.
F: Various (surface water)*	Heavy rainfall resulting in surcharging of Sewers.	Southern Water Sewers.	Southern Water have records of incidents

Summary of Location-specific Actions

Area of benefit	Location of action	Action	Action owner	Priority
Morehall	Morehall	Investigate surface water, fluvial and sewer interactions.	KCC	Quick Win



Legend

- Main River (EA) - open channel
- Main River (EA) - culverted
- Ordinary Watercourse - open channel
- Ordinary Watercourse - culverted
- Surface Water Sewer (Southern Water)
- Combined Sewer (Southern Water)
- Foul Sewer (Southern Water)

Receptors

- A** Cheriton High Street
- B** Shaftsbury Avenue
- C** Folkestone Enterprise Centre
- D** Morehall
- E** Lynwood
- F** Various (surface water)*

*Illustrations not located on the map, as there are several receptor areas across the drainage area

Client:

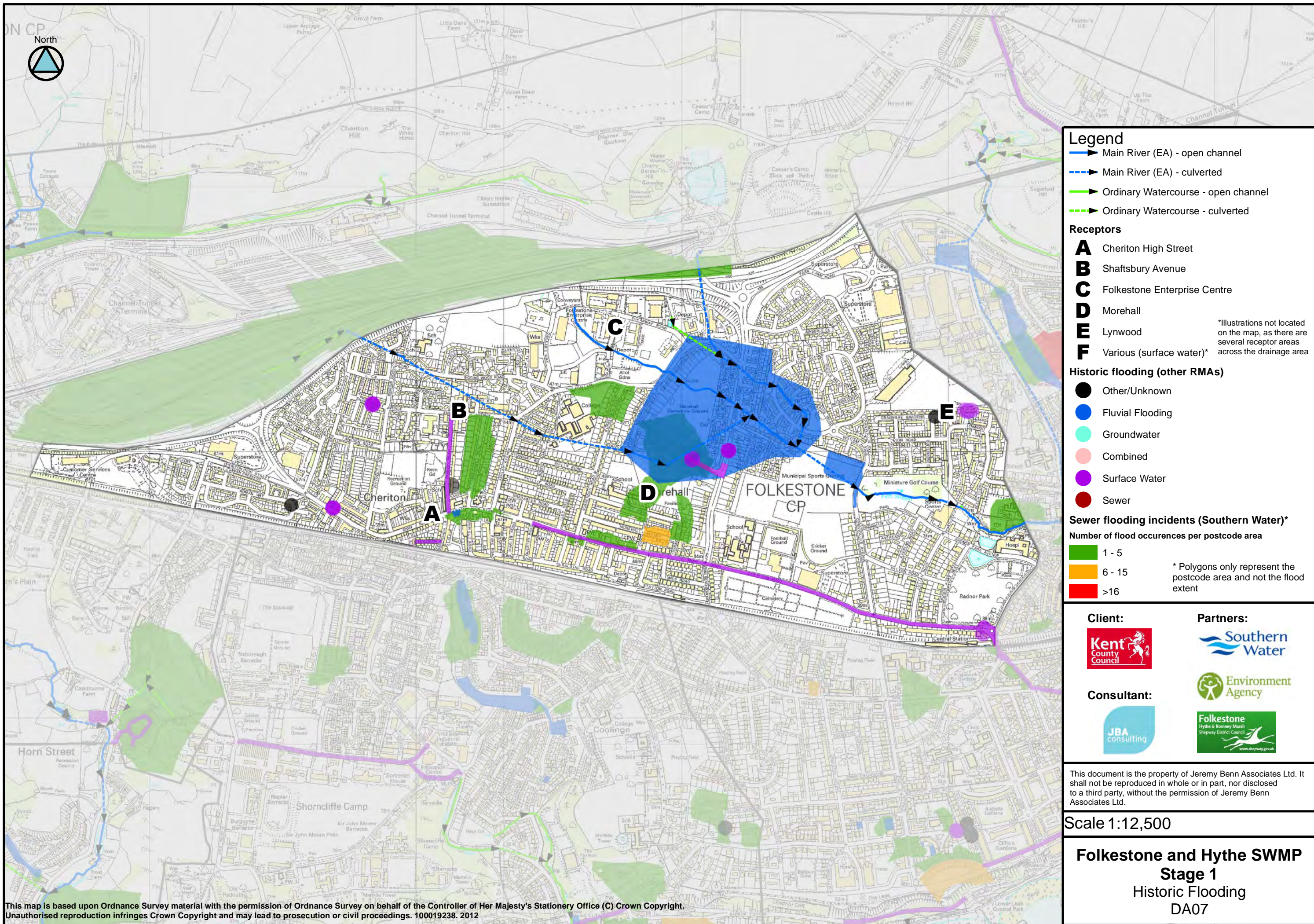
Partners:

Consultant:

This document is the property of Jeremy Benn Associates Ltd. It shall not be reproduced in whole or in part, nor disclosed to a third party, without the permission of Jeremy Benn Associates Ltd.

Scale 1:12,500

Folkestone and Hythe SWMP
Stage 1
Watercourses and Drainage Systems
DA07



Legend

- ➔ Main River (EA) - open channel
- ➔ Main River (EA) - culverted
- ➔ Ordinary Watercourse - open channel
- ➔ Ordinary Watercourse - culverted

Receptors

- A** Cheriton High Street
 - B** Shaftsbury Avenue
 - C** Folkestone Enterprise Centre
 - D** Morehall
 - E** Lynwood
 - F** Various (surface water)*
- *Illustrations not located on the map, as there are several receptor areas across the drainage area

Historic flooding (other RMAs)

- Other/Unknown
- Fluvial Flooding
- Groundwater
- Combined
- Surface Water
- Sewer

Sewer flooding incidents (Southern Water)*

Number of flood occurrences per postcode area

- 1 - 5
- 6 - 15
- >16

* Polygons only represent the postcode area and not the flood extent

Client:



Partners:



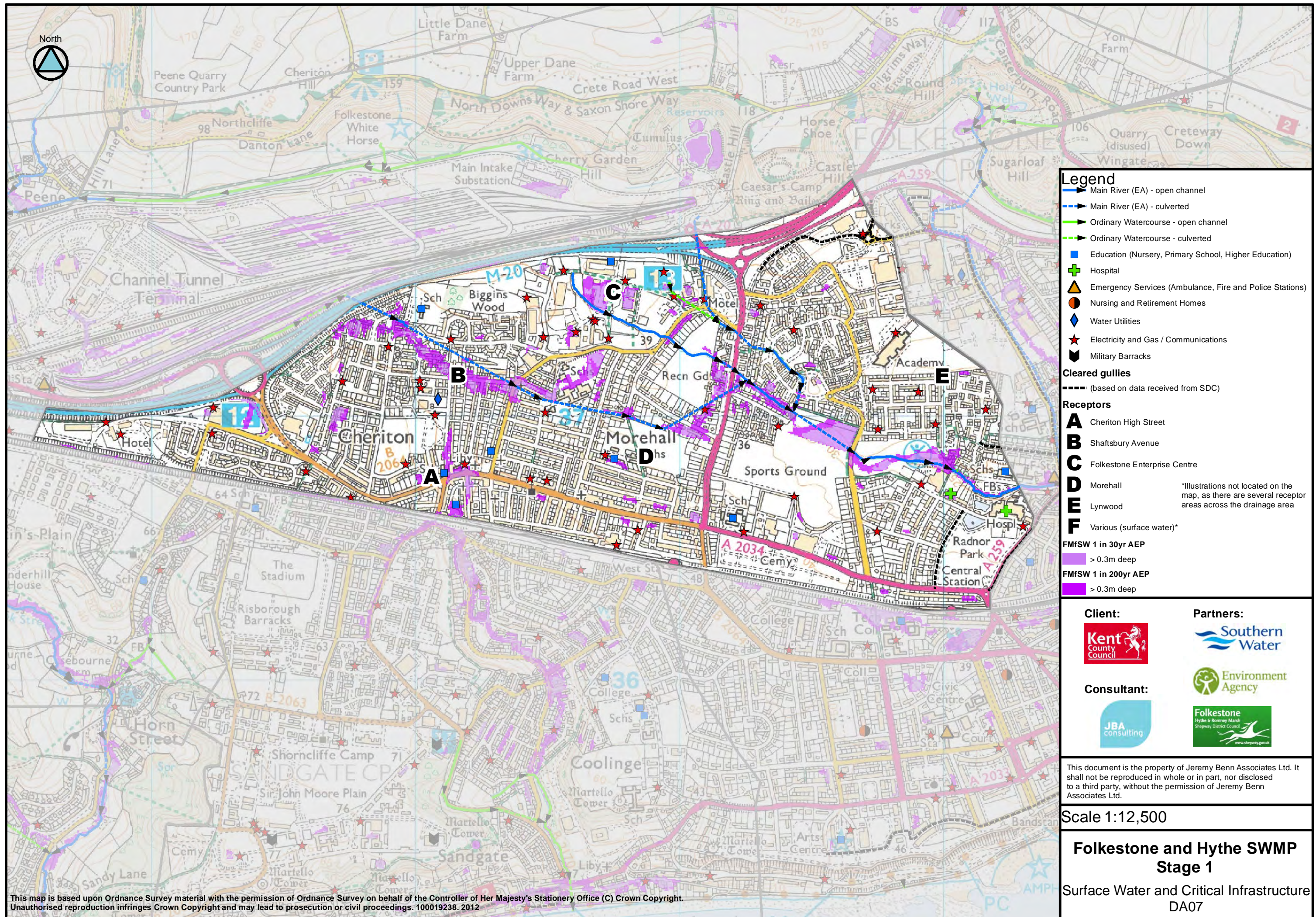
Consultant:



This document is the property of Jeremy Benn Associates Ltd. It shall not be reproduced in whole or in part, nor disclosed to a third party, without the permission of Jeremy Benn Associates Ltd.

Scale 1:12,500

Folkestone and Hythe SWMP
Stage 1
 Historic Flooding
 DA07



Legend

- Main River (EA) - open channel
- Main River (EA) - culverted
- Ordinary Watercourse - open channel
- Ordinary Watercourse - culverted
- Education (Nursery, Primary School, Higher Education)
- Hospital
- Emergency Services (Ambulance, Fire and Police Stations)
- Nursing and Retirement Homes
- Water Utilities
- Electricity and Gas / Communications
- Military Barracks

Cleared gullies

----- (based on data received from SDC)

Receptors

- A** Cheriton High Street
- B** Shaftsbury Avenue
- C** Folkestone Enterprise Centre
- D** Morehall
- E** Lynwood
- F** Various (surface water)*

*Illustrations not located on the map, as there are several receptor areas across the drainage area

FMfSW 1 in 30yr AEP

- > 0.3m deep

FMfSW 1 in 200yr AEP

- > 0.3m deep

Client: 	Partners:   
Consultant: 	

This document is the property of Jeremy Benn Associates Ltd. It shall not be reproduced in whole or in part, nor disclosed to a third party, without the permission of Jeremy Benn Associates Ltd.

Scale 1:12,500

Folkestone and Hythe SWMP Stage 1

Surface Water and Critical Infrastructure DA07

This map is based upon Ordnance Survey material with the permission of Ordnance Survey on behalf of the Controller of Her Majesty's Stationery Office (C) Crown Copyright. Unauthorised reproduction infringes Crown Copyright and may lead to prosecution or civil proceedings. 100019238. 2012