

## **B Detailed Summary Sheets and Mapping**

### **B.1 DA01 Thanet Rural**

## Thanet Stage 1 SWMP : Summary and Actions

### Drainage Area 01

#### Area overview

Area (km<sup>2</sup>) 60.7

Drainage assets/systems	Type	Known Issues/problems	Responsibility
Minster and Monston Marshes	Main River	The are issues where channel capacity has been exceeded in rural areas	Environment Agency
River Stour Tidal	Main River	Channel capacity has been exceeded along this reach and there is a risk of tidal flooding. The Lower Stour has a low	Environment Agency
River Wantsum	Main River	There are recorded incidents of fluvial flooding along this reach.	Environment Agency
IDB Drains	Ordinary Watercourse	A complex network of drains that is prone to both tidal and fluvial flooding.	River Stour IDB
Drains	Ordinary Watercourse	There are numerous complex networks of drains, this area is prone to both tidal and fluvial flooding.	TDC/ KCC/ Kent Stour IDB
Sewer network	Sewer (combined, foul)	There are known issues along the combined sewer network.	Southern Water

#### Flood risk

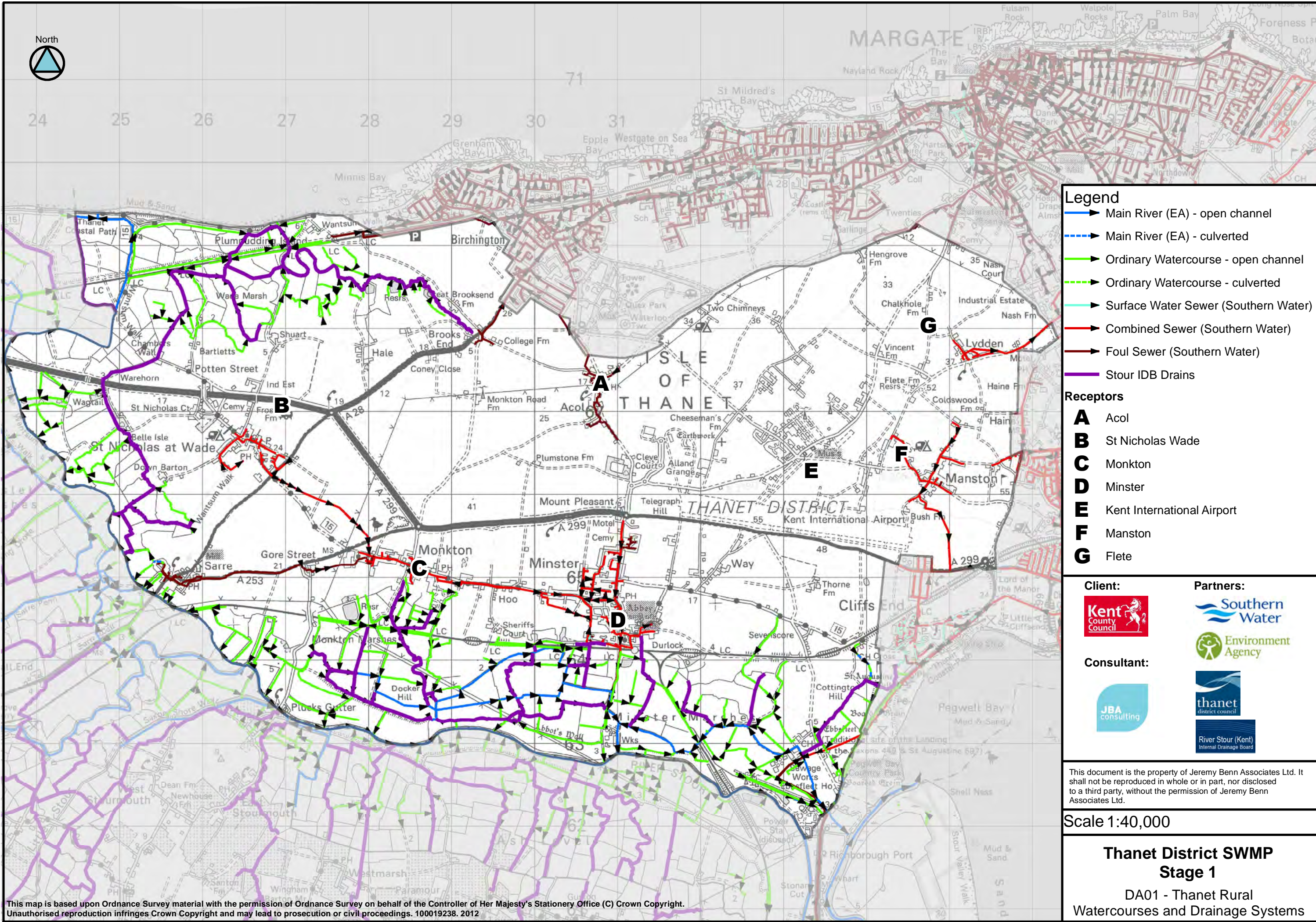
Receptor	Source	Pathway	Historic Evidence
<b>A: Acol</b>	Heavy rainfall resulting in flooding from run off.	The flow pathway is from the west, following the natural topography of the land towards Crisp Road and Brooksend.	There are no records of flooding in this area.  FMfSW 200yr (deep)
<b>B: St Nicholas Wade (Caravan Park)</b>	Heavy rainfall resulting in flooding from run off and ponding.	Thanet Way has been recorded as a pathway for floods.  Reviewing the LIDAR and the FMfSW (200yr deep); it suggests that there is a dip/ bowl where surface water is likely to pond, in and around Frost Farm, St Nicolas Wade.	Recorded incidents of flooding along Thanet Way.  FMfSW 200yr (deep)
<b>C: Monkton</b>	Heavy rainfall resulting in flooding from run off and sewers.	Southern Water sewers.  Seamark Road (north of Monkton) has been recorded as a pathway for floods.  The FMfSW suggests that ponding may occur in Monkton, areas to note would be along Monkton Street, Parsonage Fields and around the caravan park.	Southern Water have recorded flooding in this area.  Highways have also recorded flooding on Seamark Road  FMfSW 200yr (deep)
<b>D: Minster</b>	Heavy rainfall resulting in flooding from ponding, sewers and highways.	Southern Water sewers.  Monkton Road as been recorded as a pathway for floods.  The FMfSW suggests that ponding may occur in Minster, areas to note would be along Monkton Road, Freeman's Road, Prospect Road and Watchester Lane.	Southern Water have recorded flooding in this area. A scheme has been put in place at Watchester Lane. (2009)  Highways have also recorded flooding on Monkton Road  FMfSW 200yr (deep)

<b>E: Kent International Airport</b>	Heavy rainfall resulting in flooding from run off and highways.	Manston Road has been recorded as a pathway for floods.  FMfSW highlights ponding occurring around the buildings of Kent International Airport.	KCC highways have recorded flooding on Manston Road.  FMfSW 200yr (deep)
<b>F: Manston</b>	Heavy rainfall resulting in flooding from run off.	The FMfSW suggests that ponding may occur at the Manston Caravan Park.  Manston Court Road has been recorded in the past as a pathway of flows	KCC highways have recorded flooding on the Manston Court Road.  FMfSW 200yr (deep)
<b>G: Flete</b>	Heavy rainfall resulting in run off	Neighbouring fields and Fleet Road are the main pathways for flooding in this area.	KCC have recorded regular incidents in Flete.  FMfSW 1 in 200 yr (deep)

#### Summary of Location-specific Actions

Area of benefit	Location of action	Action	Action owner	Priority
<b>Flete</b>	Flete	Install green infrastructure or localised measures (fringe infiltration, kerbing, minor bunding, signage etc) to improve management of surface water during intense rainfall.	KCC/ KCC Highways	Short Term





### Legend

- Main River (EA) - open channel
- - - Main River (EA) - culverted
- Ordinary Watercourse - open channel
- - - Ordinary Watercourse - culverted
- Surface Water Sewer (Southern Water)
- Combined Sewer (Southern Water)
- Foul Sewer (Southern Water)
- Stour IDB Drains

### Receptors

- A** Acol
- B** St Nicholas Wade
- C** Monkton
- D** Minster
- E** Kent International Airport
- F** Manston
- G** Flete

### Client:



### Consultant:



### Partners:



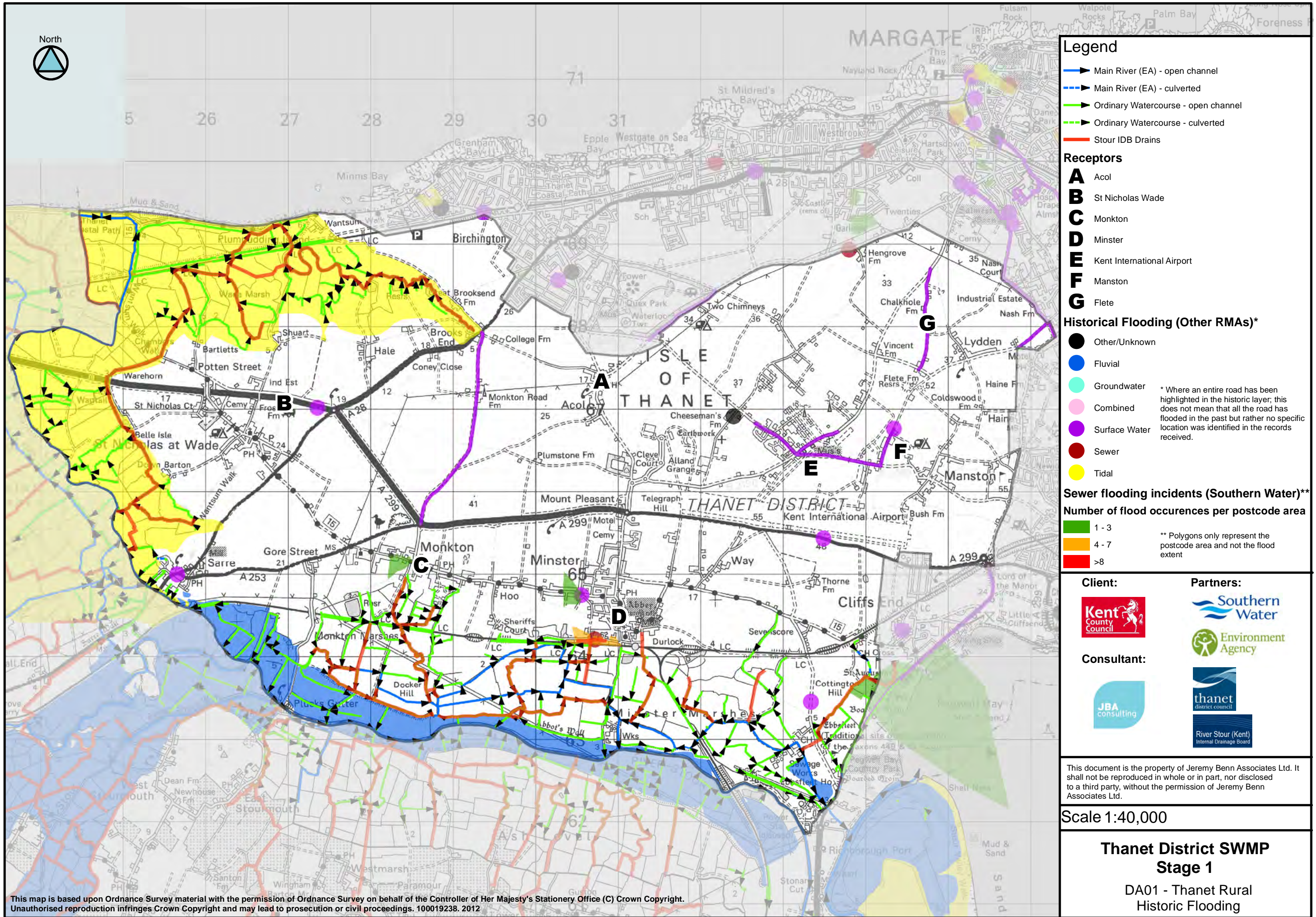
This document is the property of Jeremy Benn Associates Ltd. It shall not be reproduced in whole or in part, nor disclosed to a third party, without the permission of Jeremy Benn Associates Ltd.

Scale 1:40,000

## Thanet District SWMP Stage 1

DA01 - Thanet Rural  
Watercourses and Drainage Systems





### Legend

- ▶ Main River (EA) - open channel
- ▶ Main River (EA) - culverted
- ▶ Ordinary Watercourse - open channel
- ▶ Ordinary Watercourse - culverted
- Stour IDB Drains

### Receptors

- A** Acol
- B** St Nicholas Wade
- C** Monkton
- D** Minster
- E** Kent International Airport
- F** Manston
- G** Flete

### Historical Flooding (Other RMAs)\*

- Other/Unknown
- Fluvial
- Groundwater
- Combined
- Surface Water
- Sewer
- Tidal

\* Where an entire road has been highlighted in the historic layer; this does not mean that all the road has flooded in the past but rather no specific location was identified in the records received.

### Sewer flooding incidents (Southern Water)\*\*

#### Number of flood occurrences per postcode area

- 1 - 3
- 4 - 7
- >8

\*\* Polygons only represent the postcode area and not the flood extent

#### Client:



#### Partners:



#### Consultant:



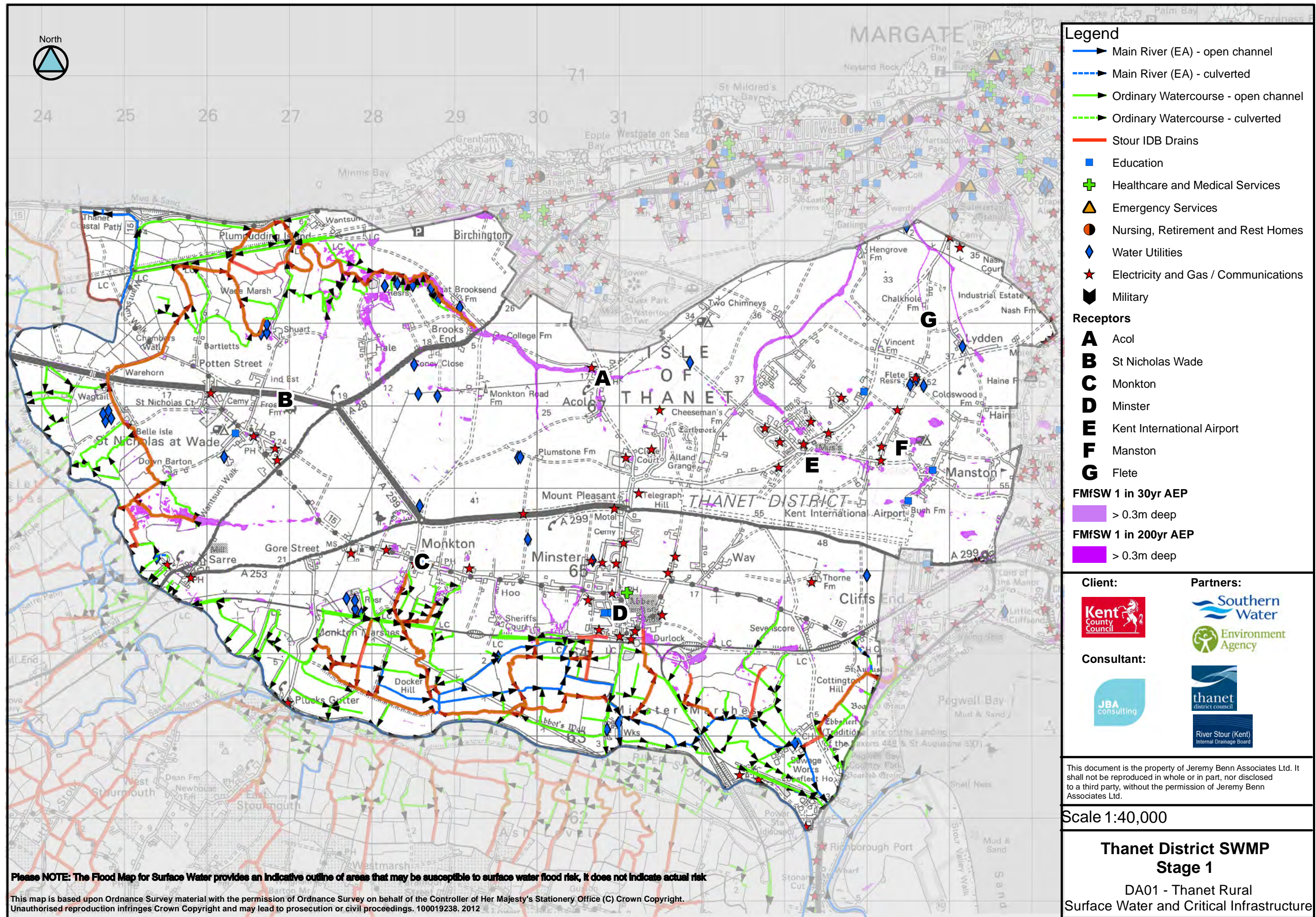
This document is the property of Jeremy Benn Associates Ltd. It shall not be reproduced in whole or in part, nor disclosed to a third party, without the permission of Jeremy Benn Associates Ltd.

Scale 1:40,000

### Thanet District SWMP Stage 1

DA01 - Thanet Rural Historic Flooding





**Legend**

- Main River (EA) - open channel
- Main River (EA) - culverted
- Ordinary Watercourse - open channel
- Ordinary Watercourse - culverted
- Stour IDB Drains
- Education
- Healthcare and Medical Services
- Emergency Services
- Nursing, Retirement and Rest Homes
- Water Utilities
- Electricity and Gas / Communications
- Military

**Receptors**

- A Acol
- B St Nicholas Wade
- C Monkton
- D Minster
- E Kent International Airport
- F Manston
- G Flete

**FMfSW 1 in 30yr AEP**

- > 0.3m deep

**FMfSW 1 in 200yr AEP**

- > 0.3m deep

**Client:**

**Partners:**

**Consultant:**

This document is the property of Jeremy Benn Associates Ltd. It shall not be reproduced in whole or in part, nor disclosed to a third party, without the permission of Jeremy Benn Associates Ltd.

**Scale 1:40,000**

**Thanet District SWMP  
Stage 1**  
DA01 - Thanet Rural  
Surface Water and Critical Infrastructure

**Please NOTE: The Flood Map for Surface Water provides an indicative outline of areas that may be susceptible to surface water flood risk, it does not indicate actual risk**

This map is based upon Ordnance Survey material with the permission of Ordnance Survey on behalf of the Controller of Her Majesty's Stationery Office (C) Crown Copyright.  
Unauthorised reproduction infringes Crown Copyright and may lead to prosecution or civil proceedings. 100019238. 2012