

DOVER FASTRACK – PROJECT NEWSLETTER

Dates for the Diary:



The next Dover Fastrack public drop-in sessions will be held at Colas Site Office, off Tesco Roundabout, Honeywood Parkway, CT16 3PS. Sessions begin at 12 midday to 2pm on **Wednesday 24th August 2022; Wednesday 28th September and Wednesday 26th October.**

Pedestrian access is via an access gate directly off the footpath on Honeywood Parkway towards Tesco, a few yards from Honeywood Close Bus stop. Visitor's parking is available on site, a gate keeper will be available to facilitate access from Tesco roundabout.

Colas Dover Fastrack Project Team will be attending Guston Parish Council meeting at The Village Hall, The Street, Guston, CT15 5EU on Monday 12th September from 7pm.

What has been happening?

Section 1 Tesco Roundabout to A2

Trial holes along the verge on the A2 are taking place to ascertain the depth and position of the existing services to help in the construction of the bridge abutment.

Vegetation clearance continues with the removal of shrubs and small bushes along the verge on the A2 and inside section 1b north.

Section 1b north drainage soakaway tanks are being installed, this is part of the main construction works and will be used for water storage and soakaway into the ground.

Section 2 B&Q Roundabout to Dover Road

Works are progressing well along this section with further highway drainage, kerbs and footpaths installed. Surfacing is being laid up to the Public Right of Way ER60.

Further drainage basins and soakaways which will provide attenuation areas and outfalls to the underlying chalk for the drainage system have also been constructed adjacent to the new road. Colas continue to work closely with the local farmer to ensure livestock are protected during the construction works.

Section 3 Dover Road

Section 3 (Phase 1) commenced on 25/07/22 and a key milestone was quickly achieved by diverting a live medium pressure gas main outside the area of the new bus layby at Burgoyne Heights. This has enabled the construction of the new bus layby to commence.

A vacuum excavator has been used to safely determine the depth of existing live services in all working areas. Road widening works adjacent to Guston Primary School have been postponed due to a live medium pressure gas main being shallower than anticipated. Plans have commenced with Southern Gas Network (SGN) to divert and lower this service which will require a full road closure in this area (date and duration TBC).

Looking Ahead

Section 1 Tesco Roundabout to A2

A location and design has been agreed to install a test pile in section 1b south behind the DDC car park. This will involve the remediation of the ground and a working platform being installed to allow the piling rig to install the test piles, which will then have a static load test carried out on.

In section 1b north a working platform will be built to allow the installation of band drains. This operation will involve a piling rig putting wicks into the ground down to 11m deep.

Underground drainage and manhole chambers will be installed in section 1b north, we will also be installing a 3.0m diameter manhole soakaway chamber in section 1b north which will be going in 5m deep.

Along the verge of the A2 in section 1b south we will be exposing the BT and Vodafone cables using a vacuum excavator, this will allow us to slew the cables out of the way of the bridge abutment.

Section 2 B&Q Roundabout to Dover Road

Section 2 works will continue with further highway drainage works, kerbs and footpaths being installed in preparation for the next surfacing visit.

Section 3 Dover Road

Section 3 (Phase 1) will continue with other road widening works and subsequent installation of new kerbs and footpaths, followed by new surfacing works in the areas currently available.

Traffic Management updates



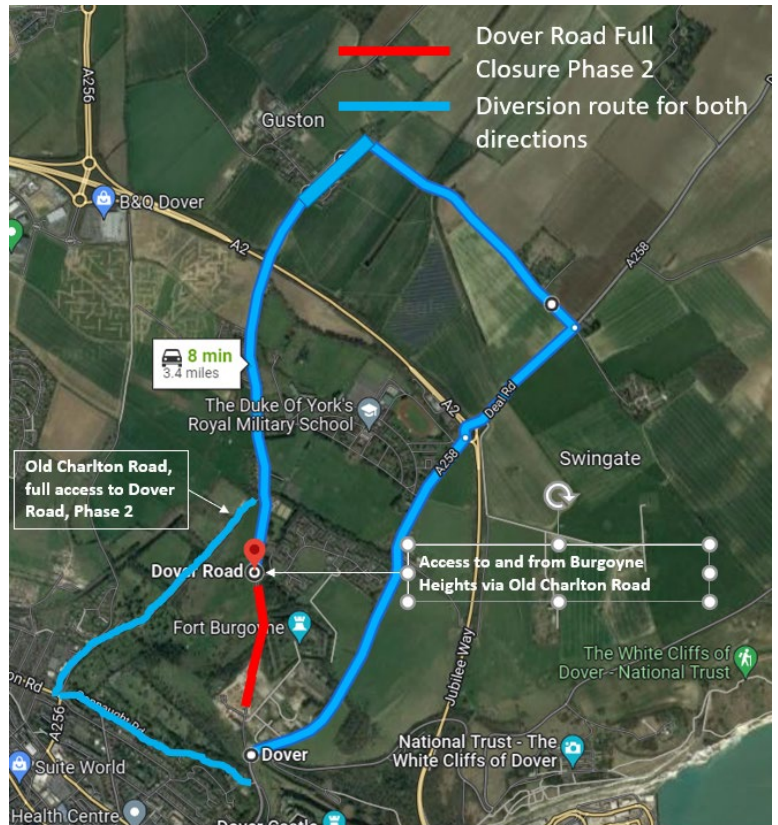
Narrow lanes traffic management remains in place with reduced speed limit installed on the A2 between A256 Whitfield Interchange and A256 Whitfield Roundabout both east and westbound until December 2022.

Emergency Free Breakdown Recovery is available within the narrow lane section on the A2 via a dedicated 24 hr TSCO number **07974 617256**.

Dover Road: Phase 2 – full road closure of Dover Road, between Burgoyne Heights and A258 Castle Hill Road from 7th September to 28th September. Closure times will be Monday to Friday 7am to 6pm, Saturday 8am to 4pm, Sunday OPEN. The only exception for access will be made for Emergency Services.

Gate keepers will be located at both closure points on Dover Road, south of Burgoyne Heights to ensure any traffic for Dover Road and Burgoyne Heights follow the diversion route via Old Charlton Lane or The Lane Guston, A258 Deal Road. In case of a Traffic Management Emergency the dedicated Traffic Safety and Control Officer can be contacted on **07974 617256**.

For access to The Chance Inn, Dover Road, CT15 5EW, follow the same diversion route shown in the image below. (



Want to know more?

If you want to learn more about planned activities, get involved in community events or take advantage of free training opportunities, please call or text our dedicated Public Liaison Officer on 07799 835379 or email PLODoverFT@colas.co.uk or sign up to Dover District Council's 'Keep Me Posted' service at www.dover.gov.uk or view Kent County Council website at www.kent.gov.uk



You can also follow us on Twitter ColasDoverFastrack @ColasDoverFT