

B.6 DA06 Cheriton, Sandgate and Shorncliffe

Folkestone and Hythe Stage 1 SWMP : Summary and Actions

Drainage Area 06

Area overview

Area (km²) 3.4

Drainage assets/systems	Type	Known Issues/problems	Responsibility
Sandgate Drain	Ordinary Watercourse	Historically there are issues at the southern end of Military Lane	Kent County Council
Sewer network	Sewers (combined, foul and surface water)	Known problems of surcharging at numerous locations across the drainage area.	Southern Water

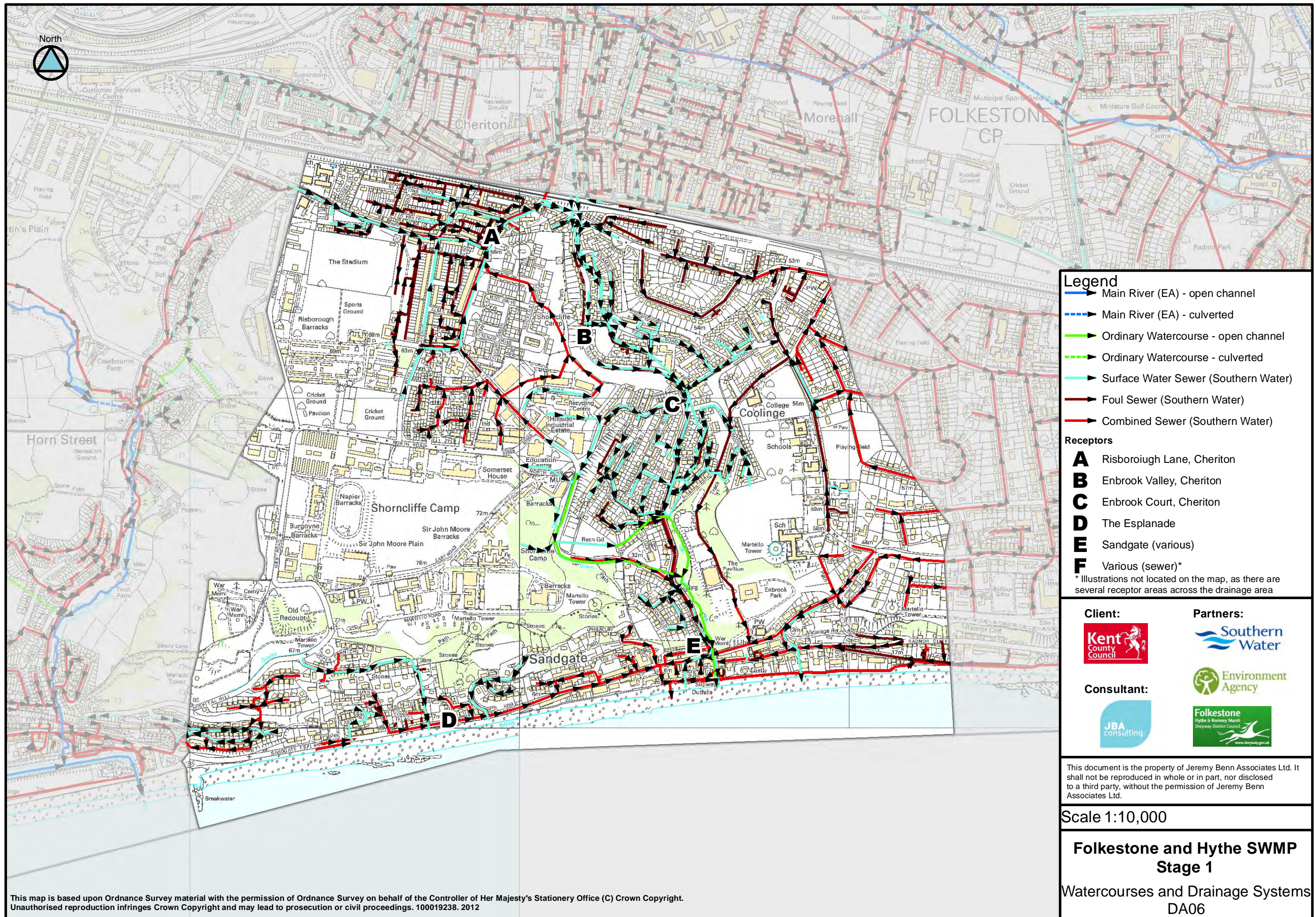
Flood risk

Receptor	Source	Pathway	Historic Evidence
A: Risborough Lane, Cheriton	Heavy rainfall resulting in surface water runoff	Overland routes flow north west following Risborough Lane under the railway bridge,	There are no records of historic risk.
B: Enbrook Valley, Cheriton	Heavy rainfall resulting in flooding from overloaded sewers and surface water runoff	Southern Water sewers Surface water flow routes along Enbrook Valley	Historically records show this areas flooded due to fluvial sources (1996), although Southern Water records describe events to be due to heavy rainfall, overloaded sewers and surface water.
C: Enbrook Road, Cheriton	Heavy rainfall resulting in flooding from overloaded sewers and surface water runoff	Southern Water sewers Surface water flow routes along Enbrook Valley / Enbrook Road	Historically records show this areas flooded due to fluvial sources (1996), although Southern Water records describe events to be due to heavy rainfall, overloaded sewers and surface water.
D: The Esplanade (various)	Heavy rainfall resulting in flooding from overloaded sewers and wave overtopping	Southern Water sewers Wave overtopping results in localised ponding and flow routes along the Esplanade.	Historical events support that this areas has suffered from coastal wave overtopping (1992/1999) and overloaded sewers.

E: Sandgate (various)	Heavy rainfall resulting in flooding from overloaded sewers and Unnamed Drain	Southern Water Sewers Fluvial flows accumulate along the High Street and War Memorial	Historic flooding has occurred from fluvial sources (1996) . Records from Southern Water also show that overloaded sewers have flooded properties in the past due to heavy rainfall.
F: Various (sewer)	Heavy rainfall resulting in flooding from overloaded sewers	Southern Water Sewers	Southern Water supplied records of historic incidents

Summary of Location-specific Actions

Area of benefit	Location of action	Action	Action owner	Priority
Enbrook Valley, Cheriton	Enbrook Valley, Enbrook Court, Enbrook Road	1. Commission modelling study to better understand risk within Enbrook Valley and Enbrook Court 2. Feasibility options could include green infrastructure or localised measures (kerbing, minor bunding, signage etc) to improve management of surface water during intense rainfall.	KCC	Long Term



Legend

- Main River (EA) - open channel
- - - Main River (EA) - culverted
- Ordinary Watercourse - open channel
- - - Ordinary Watercourse - culverted
- Surface Water Sewer (Southern Water)
- Foul Sewer (Southern Water)
- Combined Sewer (Southern Water)

Receptors

- A** Risborough Lane, Cheriton
- B** Enbrook Valley, Cheriton
- C** Enbrook Court, Cheriton
- D** The Esplanade
- E** Sandgate (various)
- F** Various (sewer)*

* Illustrations not located on the map, as there are several receptor areas across the drainage area

Client:



Partners:



Consultant:

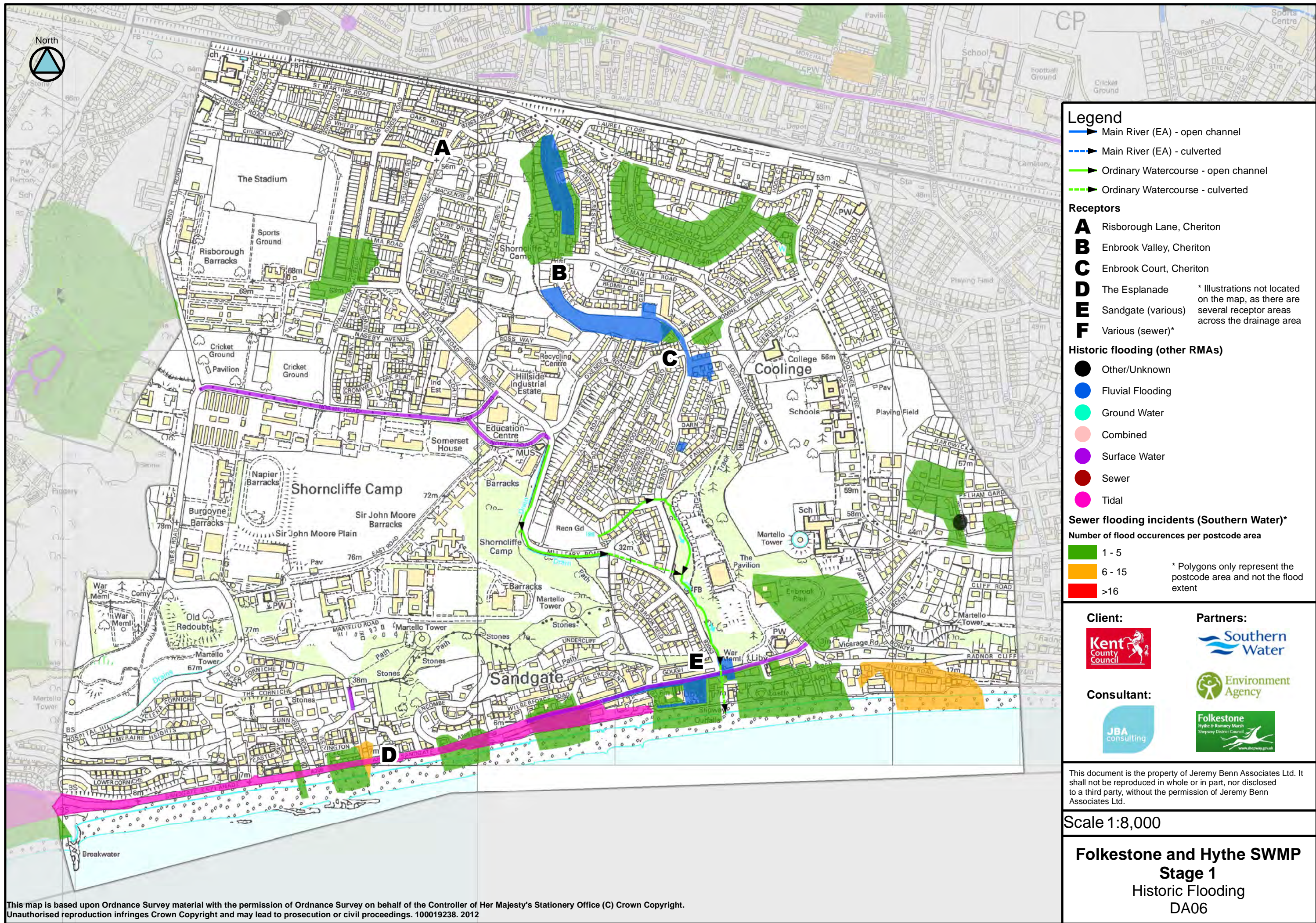


This document is the property of Jeremy Benn Associates Ltd. It shall not be reproduced in whole or in part, nor disclosed to a third party, without the permission of Jeremy Benn Associates Ltd.

Scale 1:10,000

Folkestone and Hythe SWMP Stage 1

Watercourses and Drainage Systems
DA06



This map is based upon Ordnance Survey material with the permission of Ordnance Survey on behalf of the Controller of Her Majesty's Stationery Office (C) Crown Copyright. Unauthorised reproduction infringes Crown Copyright and may lead to prosecution or civil proceedings. 100019238. 2012

Legend

- Main River (EA) - open channel
- Main River (EA) - culverted
- Ordinary Watercourse - open channel
- Ordinary Watercourse - culverted

Receptors

- A** Risborough Lane, Cheriton
 - B** Enbrook Valley, Cheriton
 - C** Enbrook Court, Cheriton
 - D** The Esplanade
 - E** Sandgate (various)
 - F** Various (sewer)*
- * Illustrations not located on the map, as there are several receptor areas across the drainage area

Historic flooding (other RMAs)

- Other/Unknown
- Fluvial Flooding
- Ground Water
- Combined
- Surface Water
- Sewer
- Tidal

Sewer flooding incidents (Southern Water)*

Number of flood occurrences per postcode area

- 1 - 5
- 6 - 15
- >16

* Polygons only represent the postcode area and not the flood extent

Client:



Partners:



Consultant:



This document is the property of Jeremy Benn Associates Ltd. It shall not be reproduced in whole or in part, nor disclosed to a third party, without the permission of Jeremy Benn Associates Ltd.

Scale 1:8,000

Folkestone and Hythe SWMP
Stage 1
Historic Flooding
DA06

