

Unemployment in Kent

All data comes from the Claimant Count by Sex and Age data set, released monthly by the Office for National Statistics. The latest data is for August 2023 and includes revisions to data for July 2023. Data for September 2023 is due to be released on 17th October 2023.

NOTE: The term “Kent” refers to the Kent County Council area and excludes Medway.

Further Information

Kent Analytics
Kent County Council
Invicta House
Maidstone
Kent
ME14 1XQ

Email:
research@kent.gov.uk

Phone: 03000 41 74 44

[Facts and figures about Kent](#)

This bulletin looks at the number of people claiming either Jobseekers Allowance or Universal Credit principally for the reason of being unemployed in August 2023. It also looks at the age and sex of claimants, in particular at youth unemployment which is defined as those aged 18 to 24.

Headlines

- 31,490 people were claiming unemployment benefits in Kent in August 2023.
- The number of people who were unemployed in Kent in has increased by 0.4% (+135) since the previous month.
- The unemployment rate in Kent is 3.3% (GB 3.7%).
- Youth unemployment in Kent (18 to 24 year-olds) is 4.9%, just above the national rate of 4.8%
- Thanet (9.1%) has the highest rate of youth unemployment in the South East.
- Unemployment decreased for males (-0.1%) and increased for females over the last month (+0.6%).

Contents

Introduction	1
Unemployment in Kent Districts.....	2
Unemployment in Kent & Medway wards.....	8
Ashford.....	9
Canterbury	10
Dartford.....	11
Dover	12
Folkestone & Hythe.....	13
Gravesham.....	14
Maidstone	15
Sevenoaks.....	16
Swale	17
Thanet.....	18
Tonbridge & Malling.....	19
Tunbridge Wells.....	20
Medway.....	21
Annexe	22
Related documents	24

Introduction

This bulletin looks at the number of people claiming either Jobseekers Allowance or Universal Credit principally for the reason of being unemployed. It also looks at the age and sex of claimants, in particular at youth unemployment which is defined as those aged 18 to 24.

This bulletin uses information from a dataset called The Claimant Count by Sex and Age. This experimental series counts the number of people claiming Jobseeker's Allowance plus those who claim Universal Credit who are out of work.

Under Universal Credit a broader span of claimants are required to look for work than under Jobseeker's Allowance. As Universal Credit Full Service is rolled out in particular areas, the number of people recorded as being on the Claimant Count is therefore likely to rise.

Unemployment rates are calculated using the Office for National Statistics Mid-Year Population Estimates 2007-2021. The resident working age population is defined as all males and females aged 16-64. These denominators will be updated annually with the ONS mid-year population estimates.

Introduction of Universal Credit

Since 2013 the roll out of Universal Credit has progressed across the UK. Universal Credit is replacing a number of means-tested benefits including the means-tested element of Jobseeker's Allowance (JSA).

The Universal Credit Live Service roll out in Kent & Medway began in April 2015. This was replaced in 2016 with the Universal Credit Full Service using the DWP bespoke digital system. The full service rollout in Kent was completed in autumn 2018.

While initially Universal Credit was only available to single claimants without a partner and without child dependents, the roll out of the full service made Universal Credit available to all new claimant types and to those reporting changes to their personal circumstances.

From July 2019 the government intended to begin a pilot scheme transferring claimants of existing benefits (those that Universal Credit was designed to replace) onto Universal Credit. Due to the impacts of the coronavirus outbreak in the UK (March 2020 onwards) the pilot has been suspended and no announcements have been made about next steps. People won't start moving over to Universal Credit in great numbers until the pilot scheme has been completed and assessed. It was originally planned to have completed the full migration process by the end of 2023. This date was then pushed back to September 2024.

DWP's intention was to take remaining tax credit claimants (and other legacy benefit claimants) through the managed migration process between November 2020 and September 2024. Despite the delay to the pilot it is still expected that the full migration process will be completed by September 2024.

More information regarding Universal Credit can be found on the government website <https://www.gov.uk/universal-credit>

Unemployment in Kent Districts

Table 1: Unemployment in Kent compared to Great Britain, August 2023

Area	Number	Rate	Number change since last month	Percentage change since last month	Number change since last year	Percentage change since last year
Kent	31,490	3.3%	+70	+0.2%	+1,045	+3.4%
Great Britain	1,510,900	3.7%	+1,785	+0.1%	+26,905	+1.8%

Table 2: District unemployment, August 2023

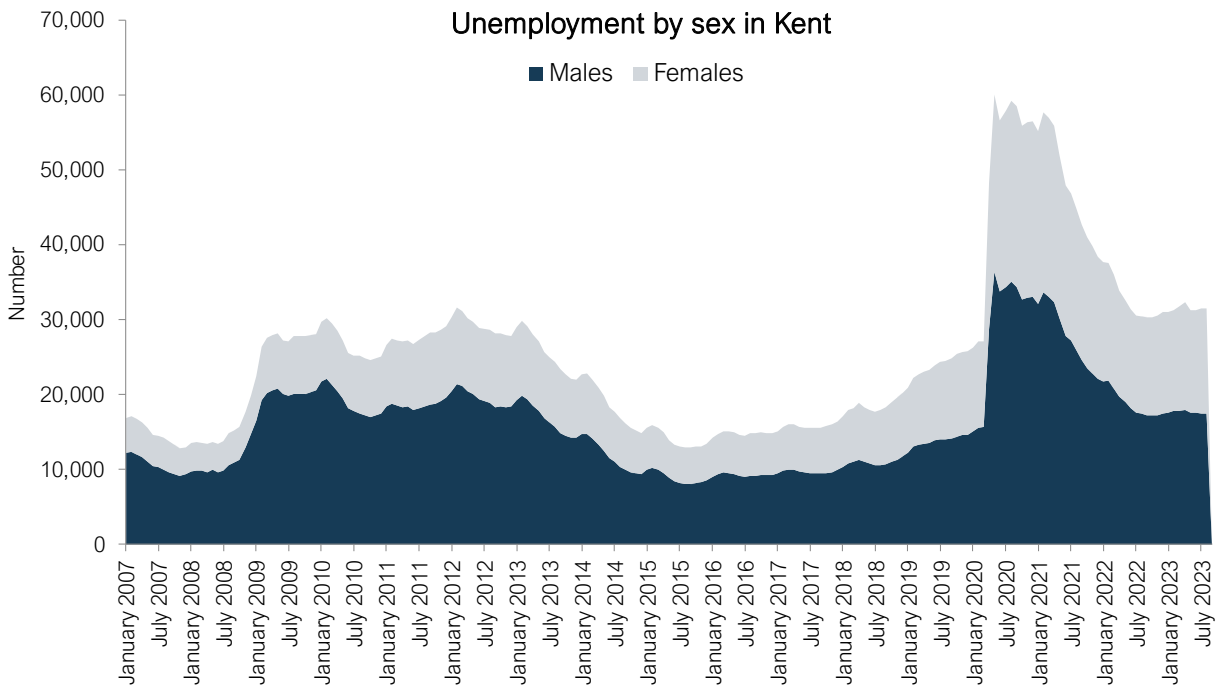
Area	Number	Rate	Number change since last month	Percentage change since last month	Number change since last year	Percentage change since last year
Ashford	2,450	3.0%	+0	+0.0%	+95	+4.0%
Canterbury	3,100	3.2%	+15	+0.5%	+240	+8.4%
Dartford	2,230	3.0%	-15	-0.7%	+170	+8.3%
Dover	2,580	3.8%	-15	-0.6%	+105	+4.2%
Folkestone & Hythe	2,470	3.8%	+25	+1.0%	-105	-4.1%
Gravesham	2,835	4.3%	-5	-0.2%	+225	+8.6%
Maidstone	3,180	2.9%	+35	+1.1%	+200	+6.7%
Sevenoaks	1,375	1.9%	-5	-0.4%	-45	-3.2%
Swale	3,280	3.5%	-40	-1.2%	-45	-1.4%
Thanet	4,520	5.5%	+0	+0.0%	-65	-1.4%
Tonbridge & Malling	1,765	2.2%	+15	+0.9%	+170	+10.7%
Tunbridge Wells	1,710	2.4%	+65	+4.0%	+100	+6.2%
Kent	31,490	3.3%	+70	+0.2%	+1,045	+3.4%
Medway	6,840	3.9%	+55	+0.8%	+295	+4.5%

Table 3: Unemployment by Sex in Kent, August 2023

Sex	Number	Rate	Number change since last month	Percentage change since last month	Number change since last year	Percentage change since last year
Males	17,375	3.7%	-15	-0.1%	-55	-0.3%
Females	14,110	2.9%	+80	+0.6%	+1,095	+8.4%
Total	31,490	3.3%	+70	+0.2%	+1,045	+3.4%

Table 4: District unemployment by sex, August 2023

Area	Male claimants	Male claimant rate	Female claimants	Female claimant rate
Ashford	1,315	3.3%	1,135	2.7%
Canterbury	1,825	3.9%	1,270	2.5%
Dartford	1,160	3.2%	1,070	2.8%
Dover	1,430	4.3%	1,150	3.3%
Folkestone & Hythe	1,460	4.6%	1,010	3.1%
Gravesham	1,560	4.8%	1,275	3.8%
Maidstone	1,745	3.2%	1,435	2.6%
Sevenoaks	685	2.0%	690	1.9%
Swale	1,790	3.8%	1,490	3.2%
Thanet	2,605	6.6%	1,920	4.5%
Tonbridge & Malling	895	2.3%	870	2.1%
Tunbridge Wells	910	2.7%	800	2.2%
Kent	17,375	3.7%	14,110	2.9%
Medway	3,795	4.4%	3,045	3.4%

Chart 1: Unemployment by sex in Kent

Table 5: Unemployment by age group in Kent, August 2023

Age group	Number	Rate	Number change since last month	Percentage change since last month	Number change since last year	Percentage change since last year
18-24	5,780	5.0%	+20	+0.3%	+455	+8.5%
25-49	18,470	3.8%	+80	+0.4%	+870	+4.9%
50-64	18,470	5.9%	+80	+0.4%	+11,005	+147.4%

Table 6: District unemployment by age group, August 2023

Area	18-24 claimants	25-49 claimants	50-64 claimants	18-24 claimant rate	25-49 claimant rate	50-64 claimant rate
Ashford	455	1,435	1,435	4.9%	3.4%	5.3%
Canterbury	675	1,720	1,720	3.1%	4.0%	5.9%
Dartford	380	1,420	1,420	4.9%	3.2%	7.0%
Dover	505	1,440	1,440	6.7%	4.4%	5.7%
Folkestone & Hythe	450	1,340	1,340	6.2%	4.3%	5.6%
Gravesham	490	1,730	1,730	6.2%	4.9%	8.5%
Maidstone	555	1,930	1,930	4.6%	3.3%	5.6%
Sevenoaks	210	845	845	2.9%	2.4%	3.4%
Swale	655	1,900	1,900	6.0%	3.9%	6.3%
Thanet	840	2,665	2,665	9.1%	6.5%	9.3%
Tonbridge & Malling	330	1,025	1,025	3.9%	2.5%	3.8%
Tunbridge Wells	235	1,020	1,020	3.3%	2.8%	4.3%
Kent	5,780	18,470	18,470	5.0%	3.8%	5.9%
Medway	1,240	4,140	4,140	5.6%	4.4%	7.7%

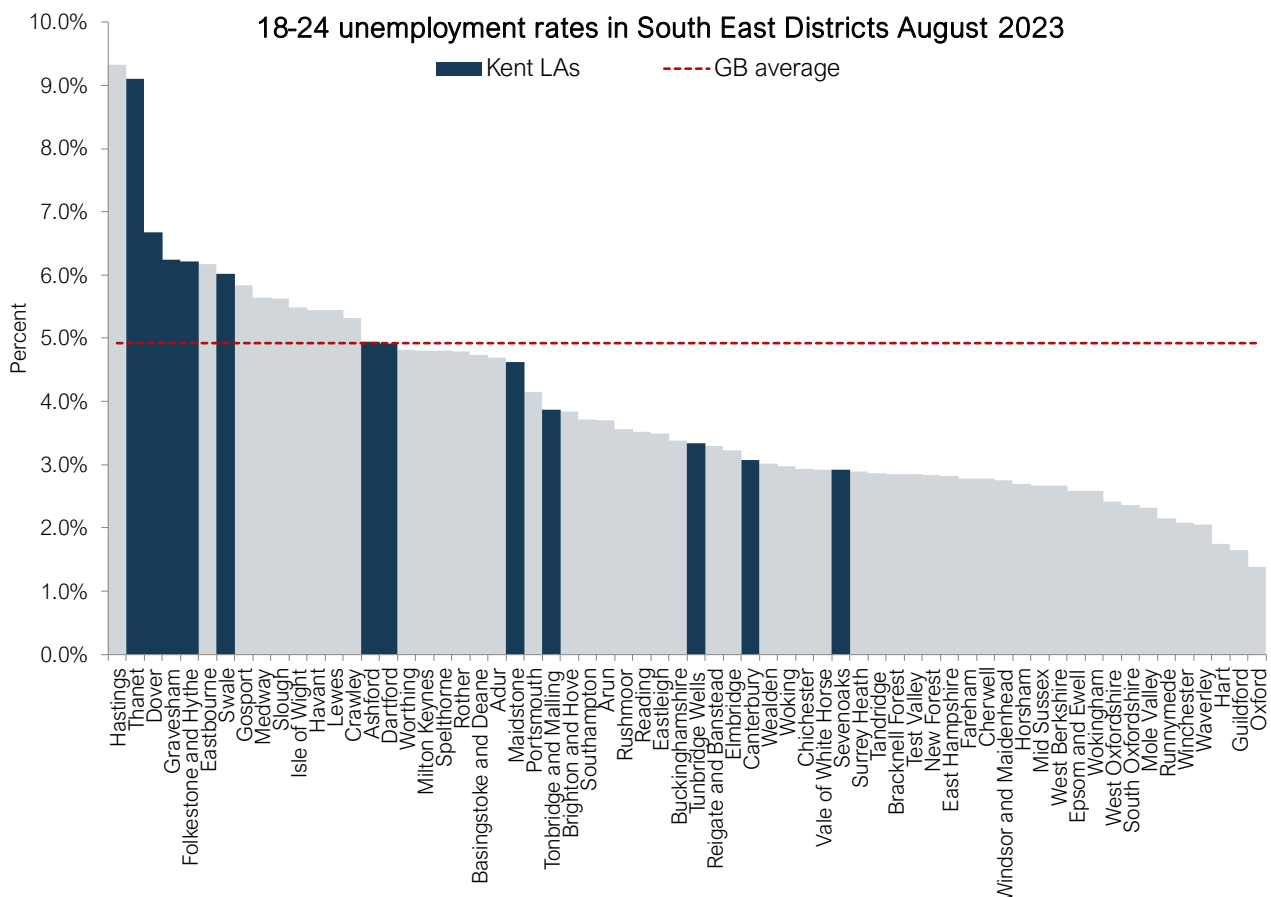
Chart 2: 18-24 year old unemployment in Kent compared to Great Britain


Table 7: 18 to 24 year old unemployment, August 2023

Area	Number	Rate	Number change since last month	Percentage change since last month	Number change since last year	Percentage change since last year
Kent	5,780	5.0%	+20	+0.3%	+455	+8.5%
Great Britain	265,465	4.9%	+4,850	+1.9%	+20,245	+8.3%

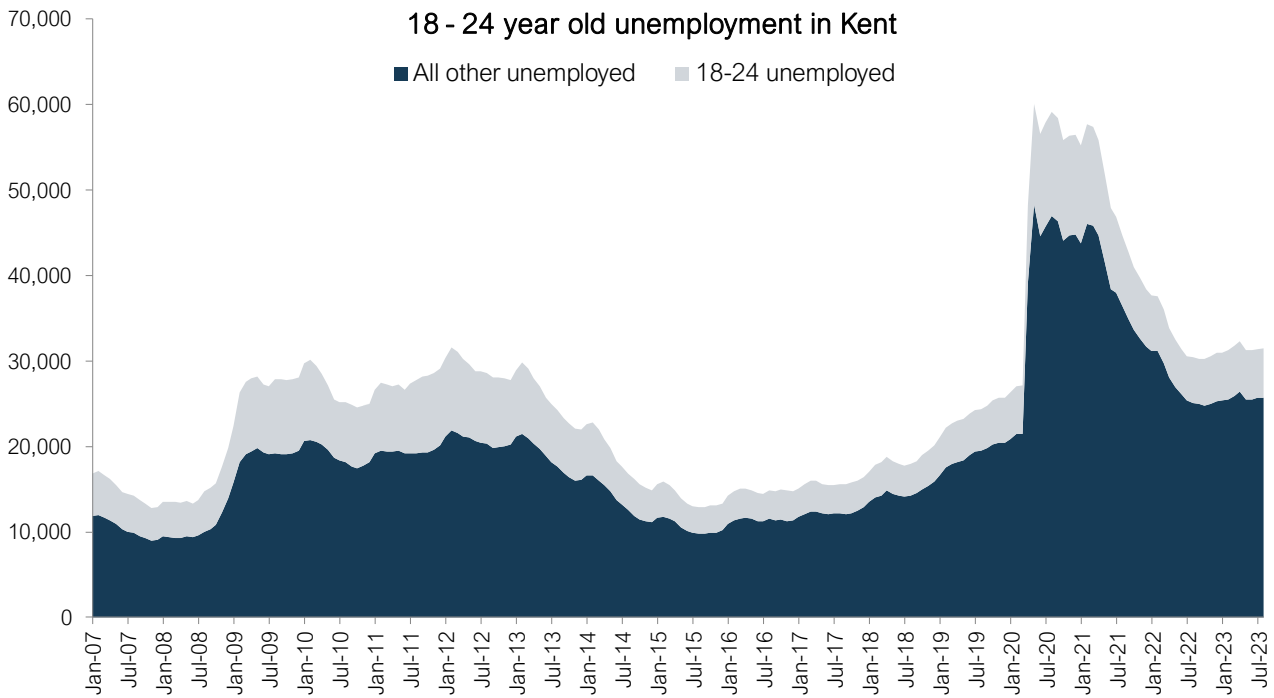
Table 8: Unemployment by age group in Kent - % of all unemployed, August 2023

Age group	Number of claimants in Kent	% of all unemployed in Kent	Number of claimants in Great Britain	% of all unemployed in Great Britain
18-24	5,780	18.4%	265,465	17.6%
25-49	18,470	58.7%	898,895	59.5%
50-64	18,470	58.7%	898,895	59.5%

Chart 3: 18 to 24 unemployment rates in South East local authorities, August 2023


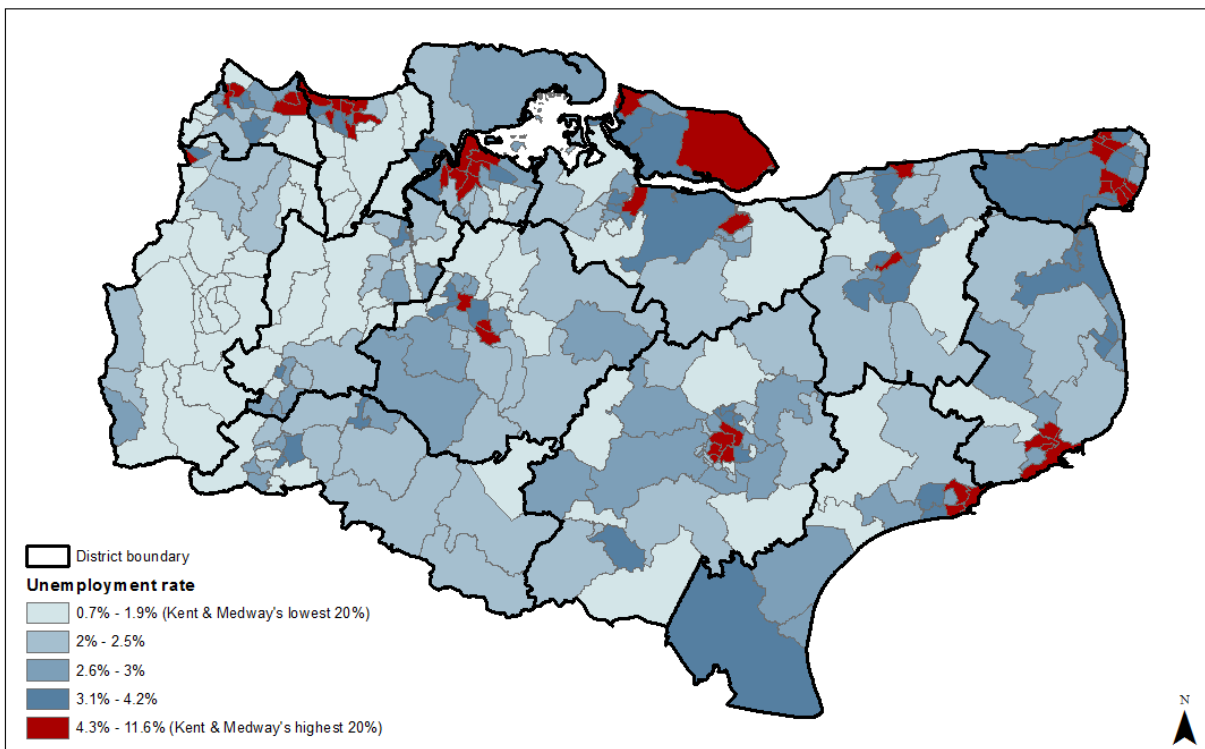
A table showing 18 to 24 year old unemployment in South East local authorities can be found in the annexe at the end of this bulletin.

Chart 4: 18 to 24 year old unemployment in Kent compared to all other unemployed



Map 1: Unemployment in Kent & Medway wards, August 2023

Ward Unemployment rates in Kent & Medway
August 2023



Source: NOMIS
Map produced by Kent Analytics, Kent County Council
© Crown Copyright and database right 2023, Ordnance Survey 100019238

Unemployment in Kent & Medway wards

This section presents tables showing the number and proportion of working age people who are unemployed and claiming Jobseekers Allowance or out of work and claiming Universal Credit at local Job Centre Plus offices in Kent and Medway wards.

Ward unemployment rates are calculated using the Office for National Statistics Mid-Year Population Estimates 2007-2020. The resident working age population is defined as all males and females aged 16-64.

Data is presented for Kent and Medway electoral ward boundaries as at 2021.

Ashford

August 2023	Number unemployed	Percentage unemployed (%)	Number change since previous month	% change since previous month	Number change since previous year	% change since previous year
Ashford District	2,450	3.0	0	0.0%	95	4.0%
Aylesford & East Stour	170	3.8	-20	-10.5%	10	6.3%
Beaver	250	5.8	10	4.2%	20	8.7%
Biddenden	40	2.7	5	14.3%	0	0.0%
Bircholt	35	2.3	0	0.0%	0	0.0%
Bockhanger	55	3.5	0	0.0%	-10	-15.4%
Bybrook	65	3.6	5	8.3%	10	18.2%
Charing	35	2.5	0	0.0%	-5	-12.5%
Conningbrook & Little Burton Farm	25	1.9	5	25.0%	0	0.0%
Downs North	35	2.3	5	16.7%	-5	-12.5%
Downs West	10	0.8	0	0.0%	0	0.0%
Furley	200	4.6	-5	-2.4%	45	29.0%
Goat Lees	55	3.4	-5	-8.3%	-15	-21.4%
Godinton	65	2.3	0	0.0%	5	8.3%
Highfield	15	1.0	0	0.0%	-5	-25.0%
Isle of Oxney	25	1.6	0	0.0%	-10	-28.6%
Kennington	25	2.2	-5	-16.7%	10	66.7%
Kingsnorth Village & Bridgefield	45	2.8	-5	-10.0%	15	50.0%
Mersham, Sevington South with Finberry	35	2.6	5	16.7%	10	40.0%
Norman	90	4.4	0	0.0%	-5	-5.3%
Park Farm North	35	1.9	10	40.0%	15	75.0%
Park Farm South	40	2.3	5	14.3%	5	14.3%
Repton	45	2.6	0	0.0%	0	0.0%
Rolvenden & Tenterden West	30	2.0	5	20.0%	5	20.0%
Roman	45	2.3	5	12.5%	0	0.0%
Saxon Shore	15	1.1	-5	-25.0%	-5	-25.0%
Singleton East	50	2.9	0	0.0%	0	0.0%
Singleton West	45	2.1	10	28.6%	15	50.0%
Stanhope	150	6.7	5	3.4%	10	7.1%
Tenterden North	25	2.5	-5	-16.7%	-10	-28.6%
Tenterden South	35	3.4	-5	-12.5%	5	16.7%
Tenterden St Michael's	25	1.9	-5	-16.7%	0	0.0%
Upper Weald	45	2.9	-5	-10.0%	-40	-47.1%
Victoria	250	6.1	0	0.0%	15	6.4%
Washford	50	2.5	-5	-9.1%	10	25.0%
Weald Central	75	2.7	-10	-11.8%	-5	-6.3%
Weald North	15	3.3	0	0.0%	-5	-25.0%
Weald South	60	2.1	-5	-7.7%	-10	-14.3%
Willesborough	100	0.7	0	0.0%	15	17.6%
Wye with Hinxhill	40	2.4	-5	-11.1%	-5	-11.1%

Canterbury

August 2023	Number unemployed	Percentage unemployed (%)	Number change since previous month	% change since previous month	Number change since previous year	% change since previous year
Canterbury District	3,100	3.2	15	0.5%	240	8.4%
Barton	335	3.3	-15	-4.3%	-30	-8.2%
Beltinge	70	2.1	0	0.0%	-20	-22.2%
Blean Forest	60	0.7	-5	-7.7%	0	0.0%
Chartham & Stone Street	110	2.4	-20	-15.4%	-10	-8.3%
Chestfield	85	2.2	5	6.3%	15	21.4%
Gorrell	180	2.7	-20	-10.0%	-10	-5.3%
Greenhill	95	4.1	5	5.6%	10	11.8%
Herne & Broomfield	120	2.1	-5	-4.0%	30	33.3%
Heron	360	4.6	0	0.0%	35	10.8%
Little Stour & Adisham	40	1.5	0	0.0%	-15	-27.3%
Nailbourne	55	2.4	5	10.0%	5	10.0%
Northgate	330	5.1	0	0.0%	65	24.5%
Reculver	60	2.5	0	0.0%	10	20.0%
Seasalter	100	2.3	15	17.6%	10	11.1%
St Stephen's	285	3.5	25	9.6%	45	18.8%
Sturry	160	3.4	5	3.2%	5	3.2%
Swalecliffe	45	2.2	-5	-10.0%	-5	-10.0%
Tankerton	25	1.1	0	0.0%	0	0.0%
West Bay	85	3.6	5	6.3%	0	0.0%
Westgate	240	3.0	25	11.6%	60	33.3%
Wincheap	260	3.7	-5	-1.9%	45	20.9%

Dartford

August 2023	Number unemployed	Percentage unemployed (%)	Number change since previous month	% change since previous month	Number change since previous year	% change since previous year
Dartford District	2,230	3.0	-15	-0.7%	170	8.3%
Bean & Village Park	40	2.3	0	0.0%	0	0.0%
Brent	85	2.4	10	13.3%	20	30.8%
Bridge	35	1.9	0	0.0%	5	16.7%
Burnham	65	2.8	-10	-13.3%	-5	-7.1%
Darenth	55	3.1	-5	-8.3%	-5	-8.3%
Ebbsfleet	40	5.1	5	14.3%	10	33.3%
Greenhithe & Knockhall	200	2.8	5	2.6%	30	17.6%
Heath	45	1.3	0	0.0%	-5	-10.0%
Joyden's Wood	35	1.2	0	0.0%	-10	-22.2%
Longfield, New Barn & Southfleet	60	1.7	5	9.1%	0	0.0%
Maypole & Leyton Cross	40	1.9	0	0.0%	15	60.0%
Newtown	165	3.8	-5	-2.9%	-20	-10.8%
Princes	140	4.0	-5	-3.4%	-15	-9.7%
Stone Castle	155	2.8	5	3.3%	15	10.7%
Stone House	140	3.4	5	3.7%	10	7.7%
Swanscombe	210	4.5	-15	-6.7%	5	2.4%
Temple Hill	365	4.8	0	0.0%	70	23.7%
Town	100	7.8	5	5.3%	20	25.0%
West Hill	150	2.6	0	0.0%	10	7.1%
Wilmington, Sutton-at-Hone & Hawley	110	2.4	0	0.0%	15	15.8%

Dover

August 2023	Number unemployed	Percentage unemployed (%)	Number change since previous month	% change since previous month	Number change since previous year	% change since previous year
Dover District	2,580	3.8	-15	-0.6%	105	4.2%
Alkham & Capel-le-Ferne	35	2.2	-5	-12.5%	-15	-30.0%
Aylesham, Eythorne & Shepherdswell	190	2.9	-5	-2.6%	-5	-2.6%
Buckland	235	4.7	-5	-2.1%	10	4.4%
Dover Downs & River	50	1.3	0	0.0%	-5	-9.1%
Eastry Rural	100	2.5	0	0.0%	-5	-4.8%
Guston, Kingsdown & St Margaret's-at-Cliffe	85	2.1	10	13.3%	15	21.4%
Little Stour & Ashstone	90	2.1	0	0.0%	-10	-10.0%
Maxton & Elms Vale	75	2.9	-5	-6.3%	10	15.4%
Middle Deal	135	3.3	0	0.0%	-5	-3.6%
Mill Hill	155	3.3	5	3.3%	15	10.7%
North Deal	120	2.7	0	0.0%	0	0.0%
Sandwich	110	3.1	10	10.0%	10	10.0%
St Radigunds	295	6.3	0	0.0%	20	7.3%
Tower Hamlets	230	7.4	-15	-6.1%	25	12.2%
Town & Castle	485	8.3	5	1.0%	30	6.6%
Walmer	95	2.7	0	0.0%	-5	-5.0%
Whitfield	95	2.6	-10	-9.5%	10	11.8%

Folkestone & Hythe

August 2023	Number unemployed	Percentage unemployed (%)	Number change since previous month	% change since previous month	Number change since previous year	% change since previous year
Folkestone & Hythe District	2,470	3.8	25	1.0%	-105	-4.1%
Broadmead	65	2.9	0	0.0%	-5	-7.1%
Cheriton	270	3.2	5	1.9%	-15	-5.3%
East Folkestone	405	5.5	-5	-1.2%	-15	-3.6%
Folkestone Central	525	6.6	10	1.9%	-55	-9.5%
Folkestone Harbour	300	7.1	10	3.4%	20	7.1%
Hythe	155	2.6	20	14.8%	5	3.3%
Hythe Rural	60	1.8	10	20.0%	-5	-7.7%
New Romney	100	2.6	-5	-4.8%	-5	-4.8%
North Downs East	155	2.1	-5	-3.1%	-25	-13.9%
North Downs West	70	1.9	5	7.7%	10	16.7%
Romney Marsh	105	2.8	-10	-8.7%	-5	-4.5%
Sandgate & West Folkestone	110	3.2	0	0.0%	-10	-8.3%
Walland & Denge Marsh	150	3.3	0	0.0%	0	0.0%

Gravesham

August 2023	Number unemployed	Percentage unemployed (%)	Number change since previous month	% change since previous month	Number change since previous year	% change since previous year
Gravesham District	2,835	4.3	-5	-0.2%	225	8.6%
Central	260	5.4	5	2.0%	-5	-1.9%
Chalk	30	2.3	5	20.0%	0	0.0%
Coldharbour	160	5.3	-5	-3.0%	20	14.3%
Higham	40	1.8	0	0.0%	-5	-11.1%
Istead Rise	20	1.1	0	0.0%	-5	-20.0%
Meopham North	25	0.9	5	25.0%	0	0.0%
Meopham South and Vigo	45	1.8	5	12.5%	10	28.6%
Northfleet North	365	6.7	10	2.8%	55	17.7%
Northfleet South	235	4.1	10	4.4%	15	6.8%
Painters Ash	85	2.8	5	6.3%	15	21.4%
Pelham	390	7.2	5	1.3%	50	14.7%
Riverside	415	6.2	-30	-6.7%	15	3.8%
Riverview	45	1.8	0	0.0%	5	12.5%
Shorne, Cobham and Luddesdown	30	1.2	5	20.0%	0	0.0%
Singlewell	240	4.8	-25	-9.4%	25	11.6%
Westcourt	235	5.7	0	0.0%	10	4.4%
Whitehill	85	3.1	-5	-5.6%	10	13.3%
Woodlands	135	3.1	10	8.0%	20	17.4%

Maidstone

August 2023	Number unemployed	Percentage unemployed (%)	Number change since previous month	% change since previous month	Number change since previous year	% change since previous year
Maidstone District	3,180	2.9	35	1.1%	200	6.7%
Allington	75	1.8	0	0.0%	30	66.7%
Barming and Teston	20	1.6	5	33.3%	0	0.0%
Bearsted	50	1.1	0	0.0%	-5	-9.1%
Boughton Monchelsea and Chart Sutton	40	2.5	10	33.3%	15	60.0%
Boxley	65	1.2	5	8.3%	5	8.3%
Bridge	160	3.8	10	6.7%	40	33.3%
Coxheath and Hunton	130	2.7	5	4.0%	5	4.0%
Detling and Thurnham	30	1.5	5	20.0%	15	100.0%
Downswood and Otham	55	2.7	0	0.0%	20	57.1%
East	165	3.0	-5	-2.9%	5	3.1%
Fant	240	3.3	0	0.0%	-15	-5.9%
Harrietsham and Lenham	100	2.6	15	17.6%	10	11.1%
Headcorn	90	2.5	0	0.0%	10	12.5%
Heath	90	1.9	-5	-5.3%	-15	-14.3%
High Street	575	7.2	20	3.6%	40	7.5%
Leeds	25	1.9	0	0.0%	-10	-28.6%
Loose	35	2.4	5	16.7%	10	40.0%
Marden and Yalding	145	2.7	-20	-12.1%	-15	-9.4%
North	180	2.7	0	0.0%	25	16.1%
North Downs	35	2.4	5	16.7%	5	16.7%
Park Wood	250	4.3	10	4.2%	10	4.2%
Shepway North	195	3.5	5	2.6%	10	5.4%
Shepway South	150	4.3	-10	-6.3%	-5	-3.2%
South	160	2.6	0	0.0%	25	18.5%
Staplehurst	90	2.5	0	0.0%	25	38.5%
Sutton Valence and Langley	45	2.1	-10	-18.2%	-15	-25.0%

Sevenoaks

August 2023	Number unemployed	Percentage unemployed (%)	Number change since previous month	% change since previous month	Number change since previous year	% change since previous year
Sevenoaks District	1,375	1.9	-5	-0.4%	-45	-3.2%
Ash and New Ash Green	65	1.9	5	8.3%	-10	-13.3%
Brasted, Chevening and Sundridge	60	1.5	0	0.0%	0	0.0%
Cowden and Hever	15	1.2	0	0.0%	0	0.0%
Crockenhill and Well Hill	20	1.8	0	0.0%	-10	-33.3%
Dunton Green and Riverhead	55	1.4	0	0.0%	-15	-21.4%
Edenbridge North and East	65	2.0	10	18.2%	-5	-7.1%
Edenbridge South and West	75	2.6	5	7.1%	5	7.1%
Eynsford	25	2.5	5	25.0%	20	400.0%
Farningham, Horton Kirby and South Darenth	65	2.2	-10	-13.3%	-5	-7.1%
Fawkham and West Kingsdown	65	2.0	-5	-7.1%	-5	-7.1%
Halstead, Knockholt and Badgers Mount	20	1.1	-5	-20.0%	-10	-33.3%
Hartley and Hodsoll Street	55	1.8	5	10.0%	5	10.0%
Hextable	35	1.5	0	0.0%	5	16.7%
Kemsing	40	1.8	-5	-11.1%	5	14.3%
Leigh and Chiddingstone Causeway	25	1.6	0	0.0%	-10	-28.6%
Otford and Shoreham	45	1.8	-5	-10.0%	0	0.0%
Penshurst, Fordcombe and Chiddingstone	10	0.8	0	0.0%	-10	-50.0%
Seal and Weald	35	1.5	0	0.0%	-10	-22.2%
Sevenoaks Eastern	45	1.7	0	0.0%	-10	-18.2%
Sevenoaks Kippington	35	1.2	-5	-12.5%	-10	-22.2%
Sevenoaks Northern	50	1.8	-10	-16.7%	-5	-9.1%
Sevenoaks Town and St John's	65	1.5	5	8.3%	20	44.4%
Swanley Christchurch and Swanley Village	85	2.3	0	0.0%	20	30.8%
Swanley St Mary's	130	4.5	0	0.0%	5	4.0%
Swanley White Oak	130	3.4	5	4.0%	-15	-10.3%
Westerham and Crockham Hill	55	2.1	-5	-8.3%	-5	-8.3%

Swale

August 2023	Number unemployed	Percentage unemployed (%)	Number change since previous month	% change since previous month	Number change since previous year	% change since previous year
Swale District	3,280	3.5	-40	-1.2%	-45	-1.4%
Abbey	80	2.5	-5	-5.9%	-40	-33.3%
Bobbing, Iwade and Lower Halstow	60	1.6	0	0.0%	-10	-14.3%
Borden and Grove Park	90	2.4	0	0.0%	-5	-5.3%
Boughton and Courtenay	80	1.9	0	0.0%	5	6.7%
Chalkwell	75	3.5	-5	-6.3%	-10	-11.8%
East Downs	35	2.2	5	16.7%	0	0.0%
Hartlip, Newington and Upchurch	80	2.2	-10	-11.1%	-5	-5.9%
Homewood	115	2.9	-10	-8.0%	-20	-14.8%
Kemsley	125	2.6	5	4.2%	-5	-3.8%
Milton Regis	155	4.0	-5	-3.1%	-5	-3.1%
Minster Cliffs	115	2.7	-10	-8.0%	-15	-11.5%
Murston	215	5.0	0	0.0%	10	4.9%
Priory	75	4.7	-5	-6.3%	-5	-6.3%
Queenborough and Halfway	195	4.0	20	11.4%	30	18.2%
Roman	175	4.2	-5	-2.8%	10	6.1%
Sheerness	665	8.3	-30	-4.3%	25	3.9%
Sheppey Central	180	3.3	-5	-2.7%	5	2.9%
Sheppey East	295	6.5	10	3.5%	20	7.3%
St Ann's	90	2.7	10	12.5%	-10	-10.0%
Teynham and Lynsted	120	3.2	5	4.3%	-15	-11.1%
The Meads	65	2.5	5	8.3%	5	8.3%
Watling	110	3.0	-10	-8.3%	-15	-12.0%
West Downs	25	1.5	5	25.0%	0	0.0%
Woodstock	50	1.4	0	0.0%	-10	-16.7%

Thanet

August 2023	Number unemployed	Percentage unemployed (%)	Number change since previous month	% change since previous month	Number change since previous year	% change since previous year
Thanet District	4,520	5.5	0	0.0%	-65	-1.4%
Beacon Road	105	3.8	5	5.0%	0	0.0%
Birchington North	35	2.2	-5	-12.5%	-5	-12.5%
Birchington South	125	4.0	-10	-7.4%	5	4.2%
Bradstowe	60	2.7	0	0.0%	-15	-20.0%
Central Harbour	370	7.0	-5	-1.3%	5	1.4%
Cliffsend and Pegwell	80	3.2	5	6.7%	5	6.7%
Cliftonville East	105	3.4	-5	-4.5%	10	10.5%
Cliftonville West	710	10.7	-10	-1.4%	-75	-9.6%
Dane Valley	360	7.8	0	0.0%	5	1.4%
Eastcliff	390	7.6	0	0.0%	15	4.0%
Garlinge	115	4.2	10	9.5%	-10	-8.0%
Kingsgate	25	2.0	5	25.0%	5	25.0%
Margate Central	465	11.6	15	3.3%	15	3.3%
Nethercourt	100	3.6	-10	-9.1%	0	0.0%
Newington	255	7.7	-10	-3.8%	-10	-3.8%
Northwood	225	5.8	5	2.3%	0	0.0%
Salmestone	160	4.5	5	3.2%	10	6.7%
Sir Moses Montefiore	150	4.8	0	0.0%	-5	-3.2%
St Peters	135	3.5	0	0.0%	5	3.8%
Thanet Villages	140	3.2	-5	-3.4%	0	0.0%
Viking	120	3.0	10	9.1%	15	14.3%
Westbrook	115	4.2	10	9.5%	-10	-8.0%
Westgate-on-Sea	185	4.2	-5	-2.6%	-20	-9.8%

Tonbridge & Malling

August 2023	Number unemployed	Percentage unemployed (%)	Number change since previous month	% change since previous month	Number change since previous year	% change since previous year
Tonbridge & Malling District	1,765	2.2	15	0.9%	170	10.7%
Aylesford North and Walderslade	55	1.5	-5	-8.3%	5	10.0%
Aylesford South	95	3.0	-5	-5.0%	15	18.8%
Borough Green and Long Mill	70	1.6	-5	-6.7%	0	0.0%
Burham and Wouldham	50	2.4	5	11.1%	10	25.0%
Cage Green	65	2.6	5	8.3%	15	30.0%
Castle	45	1.4	0	0.0%	5	12.5%
Ditton	40	1.4	-5	-11.1%	-20	-33.3%
Downs and Mereworth	25	0.9	0	0.0%	0	0.0%
East Malling	95	2.8	10	11.8%	25	35.7%
Hadlow and East Peckham	95	2.3	5	5.6%	10	11.8%
Higham	60	2.3	-5	-7.7%	5	9.1%
Hildenborough	30	1.0	5	20.0%	-10	-25.0%
Judd	105	2.9	-5	-4.5%	0	0.0%
Kings Hill	85	1.5	0	0.0%	0	0.0%
Larkfield North	75	2.5	5	7.1%	15	25.0%
Larkfield South	45	1.8	5	12.5%	-10	-18.2%
Medway	140	3.0	-10	-6.7%	20	16.7%
Snodland East and Ham Hill	120	3.4	10	9.1%	5	4.3%
Snodland West and Holborough Lakes	100	2.4	0	0.0%	10	11.1%
Trench	110	3.9	0	0.0%	15	15.8%
Vauxhall	95	2.6	0	0.0%	20	26.7%
Wateringbury	20	1.6	-5	-20.0%	0	0.0%
West Malling and Leybourne	85	2.1	5	6.3%	15	21.4%
Wrotham, Ightham and Stansted	50	1.9	0	0.0%	5	11.1%

Tunbridge Wells

August 2023	Number unemployed	Percentage unemployed (%)	Number change since previous month	% change since previous month	Number change since previous year	% change since previous year
Tunbridge Wells District	1,710	2.4	65	4.0%	100	6.2%
Benenden and Cranbrook	90	2.0	5	5.9%	-5	-5.3%
Brenchley and Horsmonden	65	2.0	10	18.2%	5	8.3%
Broadwater	85	3.0	5	6.3%	5	6.3%
Capel	35	2.4	5	16.7%	10	40.0%
Culverden	150	2.4	10	7.1%	15	11.1%
Frittenden and Sissinghurst	25	1.9	0	0.0%	-5	-16.7%
Goudhurst and Lamberhurst	65	2.2	5	8.3%	0	0.0%
Hawkhurst and Sandhurst	90	2.5	0	0.0%	5	5.9%
Paddock Wood East	65	2.8	10	18.2%	5	8.3%
Paddock Wood West	75	3.2	0	0.0%	10	15.4%
Pantiles and St Mark's	60	1.5	0	0.0%	5	9.1%
Park	90	1.9	-5	-5.3%	-15	-14.3%
Pembury	65	2.0	0	0.0%	0	0.0%
Rusthall	85	2.9	10	13.3%	20	30.8%
Sherwood	195	3.8	5	2.6%	50	34.5%
Southborough North	50	2.0	-5	-9.1%	-10	-16.7%
Southborough and High Brooms	150	2.9	5	3.4%	10	7.1%
Speldhurst and Bidborough	40	1.2	0	0.0%	-5	-11.1%
St James'	150	3.1	5	3.4%	10	7.1%
St John's	80	1.7	0	0.0%	-15	-15.8%

Medway

August 2023	Number unemployed	Percentage unemployed (%)	Number change since previous month	% change since previous month	Number change since previous year	% change since previous year
Medway District	6,840	3.9	55	0.8%	295	4.5%
Chatham Central	785	6.8	-5	-0.6%	50	6.8%
Cuxton and Halling	60	1.5	-5	-7.7%	-10	-14.3%
Gillingham North	765	5.7	30	4.1%	60	8.5%
Gillingham South	690	5.9	0	0.0%	20	3.0%
Hempstead and Wigmore	40	0.9	0	0.0%	-5	-11.1%
Lordswood and Capstone	120	2.2	5	4.3%	-15	-11.1%
Luton and Wayfield	635	6.4	0	0.0%	-5	-0.8%
Peninsula	250	2.9	-10	-3.8%	20	8.7%
Princes Park	160	2.4	0	0.0%	-5	-3.0%
Rainham Central	130	1.9	10	8.3%	5	4.0%
Rainham North	145	2.8	5	3.6%	15	11.5%
Rainham South	185	2.3	0	0.0%	-10	-5.1%
River	510	5.9	5	1.0%	50	10.9%
Rochester East	340	5.0	-15	-4.2%	65	23.6%
Rochester South and Horsted	195	2.4	20	11.4%	25	14.7%
Rochester West	245	3.4	15	6.5%	-5	-2.0%
Strood North	330	3.6	0	0.0%	25	8.2%
Strood Rural	230	2.5	20	9.5%	10	4.5%
Strood South	415	4.0	0	0.0%	15	3.8%
Twydall	285	3.5	0	0.0%	-15	-5.0%
Walderslade	165	2.9	0	0.0%	15	10.0%
Watling	180	3.0	10	5.9%	5	2.9%

Annexe

Table showing the latest 18 to 24 unemployment in South East local authorities.

August 2023	18 to 24 number unemployed	18 to 24 unemployment rate
Adur	180	4.7%
Arun	385	3.7%
Ashford	455	4.9%
Basingstoke and Deane	595	4.7%
Bracknell Forest	255	2.9%
Brighton and Hove	1,395	3.8%
Buckinghamshire	1,245	3.4%
Canterbury	675	3.1%
Cherwell	305	2.8%
Chichester	275	2.9%
Crawley	475	5.3%
Dartford	380	4.9%
Dover	505	6.7%
East Hampshire	220	2.8%
Eastbourne	445	6.2%
Eastleigh	310	3.5%
Elmbridge	245	3.2%
Epsom and Ewell	145	2.6%
Fareham	210	2.8%
Folkestone and Hythe	450	6.2%
Gosport	345	5.8%
Gravesham	490	6.2%
Guildford	310	1.6%
Hart	120	1.8%
Hastings	575	9.3%
Havant	445	5.4%
Horsham	240	2.7%
Isle of Wight	455	5.5%
Lewes	335	5.4%
Maidstone	555	4.6%
Medway	1,240	5.6%
Mid Sussex	245	2.7%

August 2023	18 to 24 number unemployed	18 to 24 unemployment rate
Milton Keynes	1,000	4.8%
Mole Valley	125	2.3%
New Forest	290	2.8%
Oxford	430	1.4%
Portsmouth	1,120	4.1%
Reading	685	3.5%
Reigate and Banstead	305	3.3%
Rother	255	4.8%
Runnymede	235	2.2%
Rushmoor	270	3.6%
Sevenoaks	210	2.9%
Slough	700	5.6%
South Oxfordshire	220	2.4%
Southampton	1,260	3.7%
Spelthorne	325	4.8%
Surrey Heath	170	2.9%
Swale	655	6.0%
Tandridge	160	2.9%
Test Valley	230	2.8%
Thanet	840	9.1%
Tonbridge and Malling	330	3.9%
Tunbridge Wells	235	3.3%
Vale of White Horse	260	2.9%
Waverley	175	2.0%
Wealden	290	3.0%
West Berkshire	285	2.7%
West Oxfordshire	185	2.4%
Winchester	260	2.1%
Windsor and Maidenhead	270	2.7%
Woking	200	3.0%
Wokingham	310	2.6%
Worthing	350	4.8%

Related documents

Interactive Excel models showing a timeseries of district and ward unemployment can be found on our [Unemployment and Benefits](#) webpage.