

B.5 DA05 Channel Tunnel Terminal

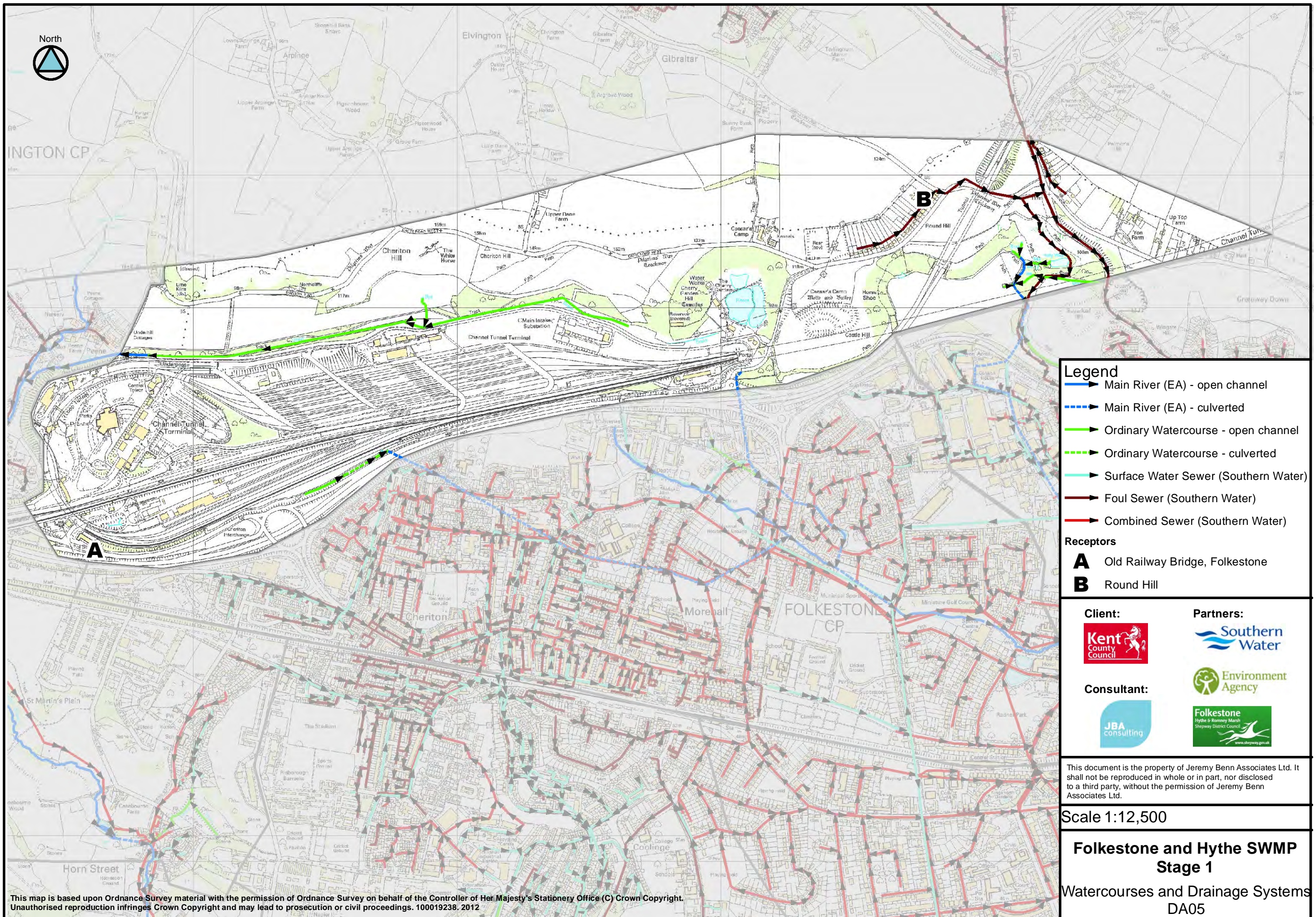
Folkestone and Hythe Stage 1 SWMP : Summary and Actions
Drainage Area 05

Area overview

Area (km²) 3.6

Drainage assets/systems	Type	Known Issues/problems	Responsibility
Drains	Ordinary Watercourse	A tributary of Seabrook Stream , there are no recorded incidents along this watercourse reach.	Kent County Council
Drains	Ordinary Watercourse	A tributary of Pent Stream , there are no recorded incidents along this watercourse reach.	Kent County Council
Sewer network	Sewers (foul)	Minor problems of surcharging at locations across the drainage area	Southern Water

Receptor	Source	Pathway	Historic Evidence
A: Old Railway Bridge, Folkestone	Heavy rainfall resulting in overloaded sewers	Southern Water sewers	Southern Water have recorded an incident in this area.
B: Round Hill	Heavy rainfall resulting in localised ponding of surface water	A natural dip in the topography suggests that during periods of heavy rainfall, water would accumulate in the Round Hill area (highlighted by the FMfSW)	There are no historic records to support this.



- Legend**
- ▶ Main River (EA) - open channel
 - - -▶ Main River (EA) - culverted
 - ▶ Ordinary Watercourse - open channel
 - - -▶ Ordinary Watercourse - culverted
 - ▶ Surface Water Sewer (Southern Water)
 - ▶ Foul Sewer (Southern Water)
 - ▶ Combined Sewer (Southern Water)

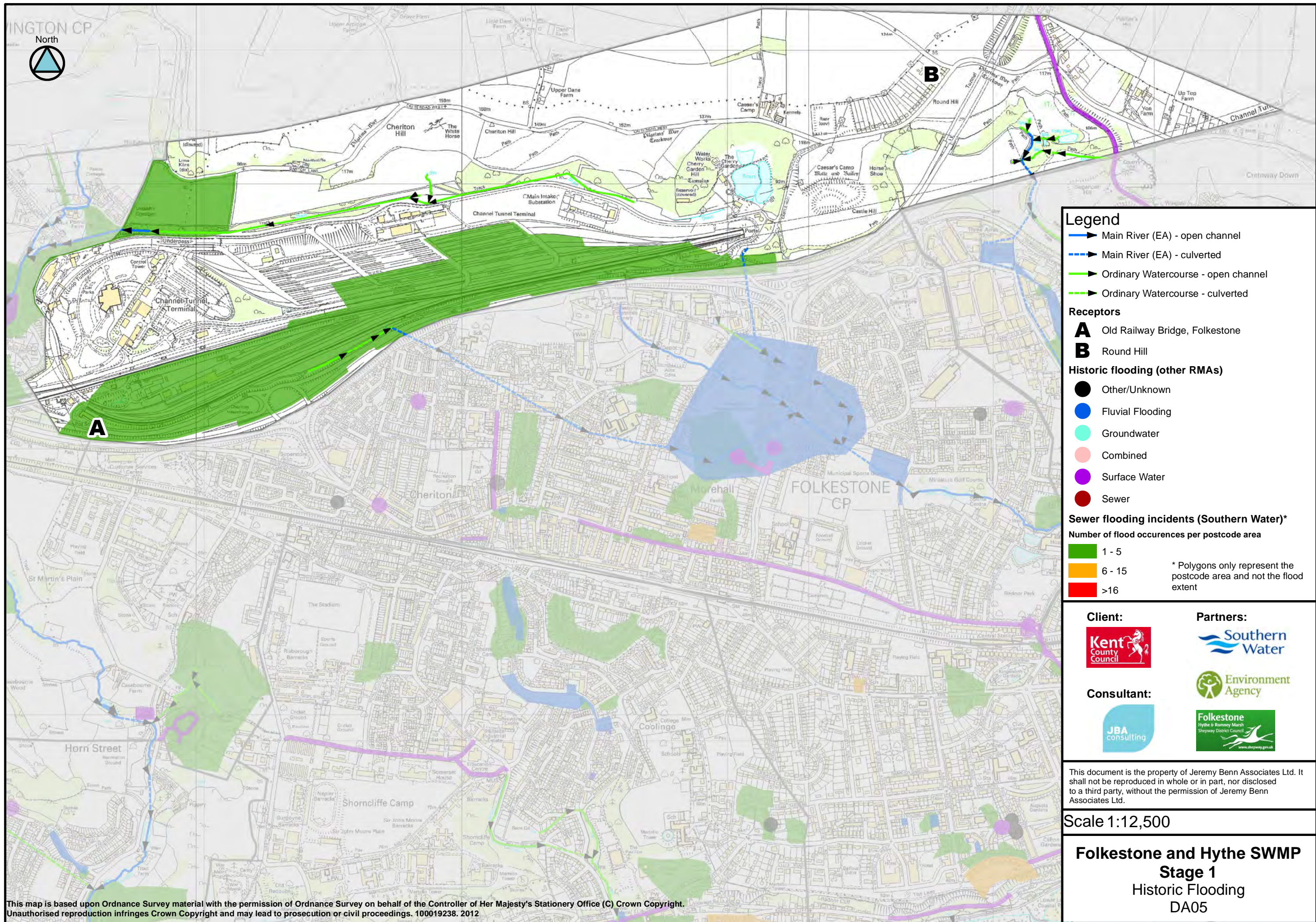
- Receptors**
- A** Old Railway Bridge, Folkestone
 - B** Round Hill

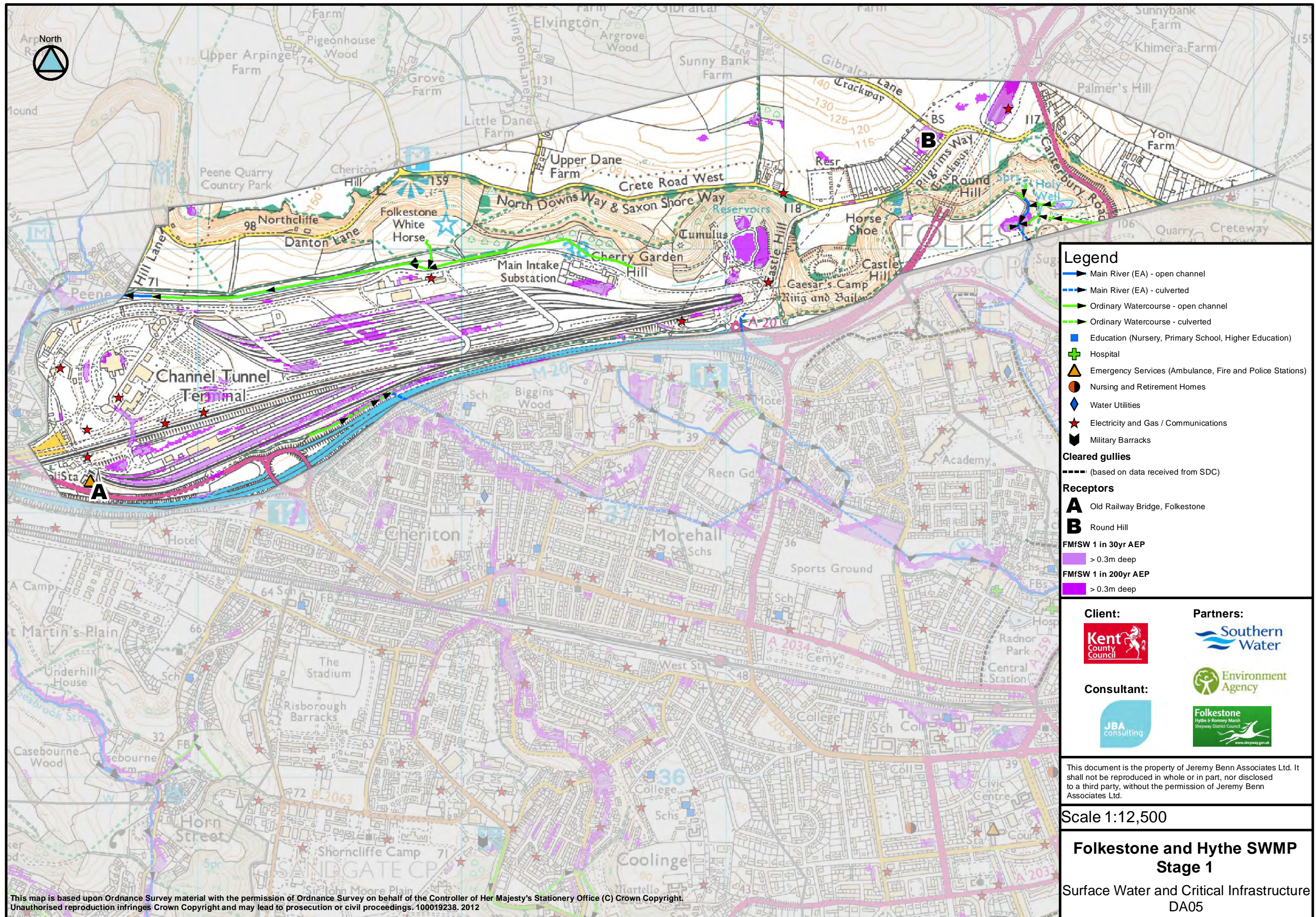
Client: 	Partners:   
Consultant: 	

This document is the property of Jeremy Benn Associates Ltd. It shall not be reproduced in whole or in part, nor disclosed to a third party, without the permission of Jeremy Benn Associates Ltd.

Scale 1:12,500

**Folkestone and Hythe SWMP
Stage 1**
Watercourses and Drainage Systems
DA05





Legend

- Main River (EA) - open channel
- - - Main River (EA) - culverted
- Ordinary Watercourse - open channel
- - - Ordinary Watercourse - culverted
- Education (Nursery, Primary School, Higher Education)
- ⛶ Hospital
- 🚒 Emergency Services (Ambulance, Fire and Police Stations)
- 🏠 Nursing and Retirement Homes
- 💧 Water Utilities
- ⚡ Electricity and Gas / Communications
- 🏢 Military Barracks

Cleared gullies
- - - (based on data received from SDC)

Receptors
A Old Railway Bridge, Folkestone
B Round Hill

FMfSW 1 in 30yr AEP
■ > 0.3m deep

FMfSW 1 in 200yr AEP
■ > 0.3m deep

Client: 	Partners:   
Consultant: 	

This document is the property of Jeremy Benn Associates Ltd. It shall not be reproduced in whole or in part, nor disclosed to a third party, without the permission of Jeremy Benn Associates Ltd.

Scale 1:12,500

**Folkestone and Hythe SWMP
Stage 1**

**Surface Water and Critical Infrastructure
DA05**

This map is based upon Ordnance Survey material with the permission of Ordnance Survey on behalf of the Controller of Her Majesty's Stationery Office (C) Crown Copyright. Unauthorised reproduction infringes Crown Copyright and may lead to prosecution or civil proceedings. 100019238. 2012