

A249 Bearsted Road Improvement Scheme



Newsletter August 2025

Why are we doing this work

The A249 Bearsted Road forms part of the key route to accommodate traffic for Maidstone town centre, whilst forming a vital link between residential areas, local schools and businesses.

Motorists using this route will be familiar with the extreme pressure the highway network is under through this corridor, resulting in regular congestion and delays throughout the day.

Pedestrian routes through this corridor have gaps in provision, discouraging many from leaving their car at home for local journeys.

This improvement scheme aims to ease congestion, reduce idling traffic, improve traffic flow and accommodate increased trips associated with the growth at the Kent Medical Campus, Eclipse Park and developments in the town centre and south Maidstone. The increased capacity will also make it easier to carry out future routine maintenance with significantly less disruption to the travelling public.



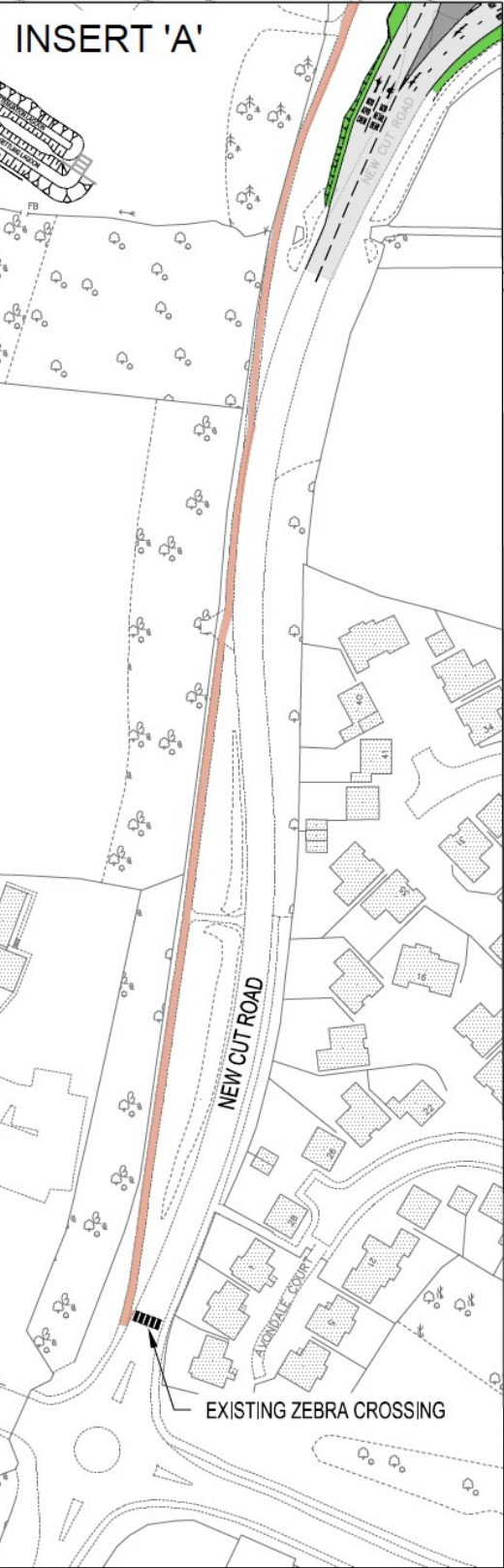
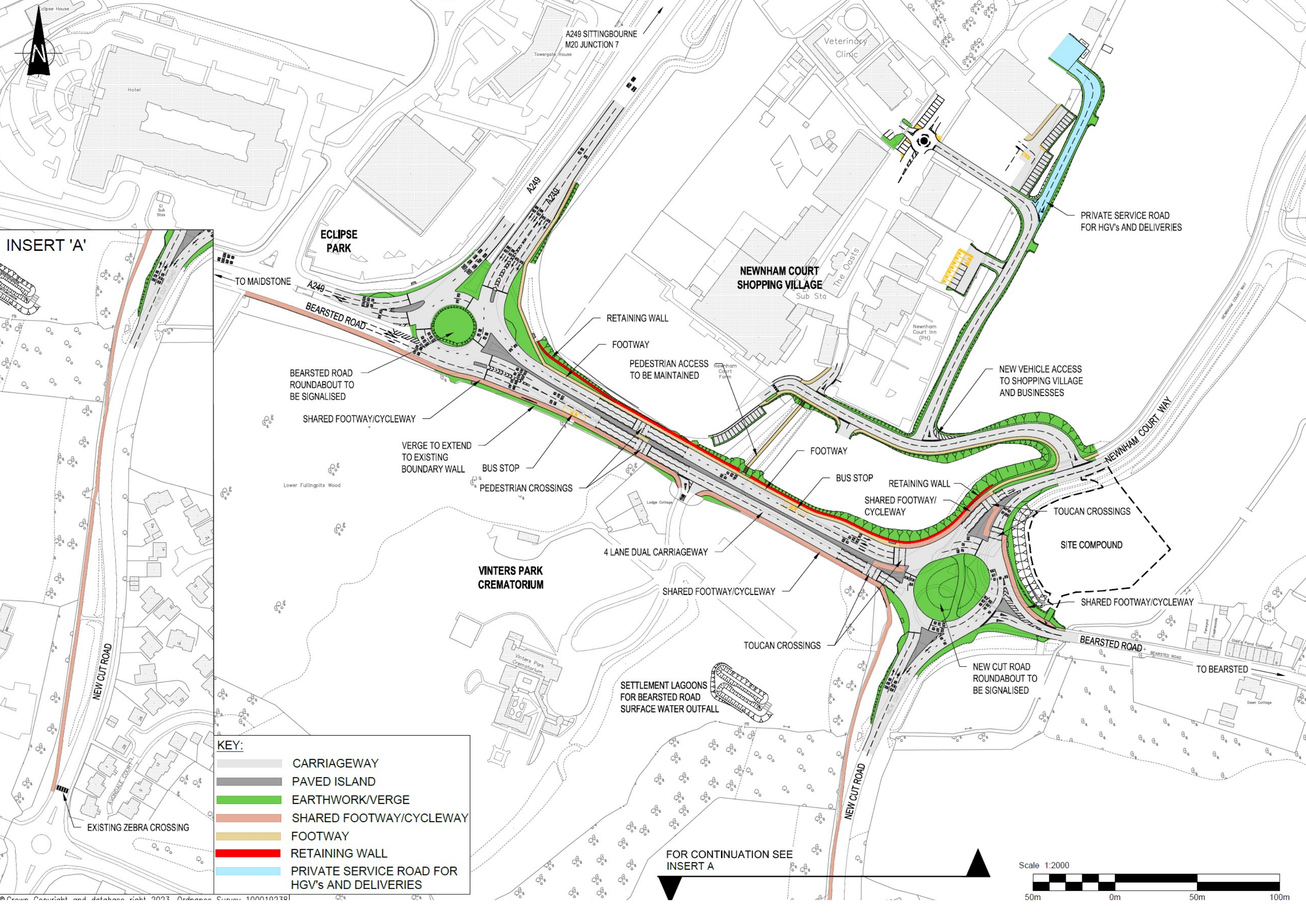
Traffic on Bearsted Road looking west

What the scheme involves

The Bearsted Road Improvement project upgrades and signalises both the A249, Bearsted Road roundabout (adjacent to Eclipse Park) and New Cut Road roundabout whilst the link road between will be increased to a four lane dual carriageway, maximising the capacity within the available land, by installing retaining walls. The selected finish to the walls has been chosen to reflect the historic character of the existing ragstone boundary of The Crematorium, using a sympathetic design that follows a similar approach previously used in Mote Park.

The current vehicular entrance to Newnham Court Shopping Village will be converted to a pedestrian access with vehicles re-routed to a new access road that will join Newnham Court Way. The Crematorium entrance will be maintained at the same location.

A new shared footway/cycleway will be added on the south side of Bearsted Road, providing a continuous, safe link between residential areas at Vinters Park and Grove Green. The existing footway route on New Cut Road will be retained, minimising the number of mature trees affected. The pedestrian crossing at The Crematorium will remain, but will be a two stage crossing to reduce delays and minimise the impact on traffic, along with additional controlled crossing points as part of the new traffic signals at New Cut Road roundabout, allowing better links to the local retail outlets and amenities.



KEY:

	CARRIAGEWAY
	PAVED ISLAND
	EARTHWORK/VERGE
	SHARED FOOTWAY/CYCLEWAY
	FOOTWAY
	RETAINING WALL
	PRIVATE SERVICE ROAD FOR HGV's AND DELIVERIES

When the work will happen

The £10.8m contract for the construction has been awarded to Breheny Civil Engineering Ltd., with a start date of Monday 18th August 2025, and an anticipated duration of 15 months, taking the works through to the end of 2026. The first stage of work will involve setting up site offices to the east of Newnham Court Way and construction will begin offline to create the new access to the shopping village, excavate and install the eastern retaining wall and prepare the area for constructing the additional carriageway.

How will we keep traffic moving

Disruption during construction was a significant concern raised during the public engagement. The design of the scheme allows much of the work, such as the retaining walls and northern carriageway, to be carried out offline. Crucially, the additional carriageway can then be used to carry traffic whilst work is undertaken on the existing road. This approach means the current road capacity can largely be maintained for long periods during the construction works.

There will be times when temporary traffic signals are required, particularly where drainage and utility ducts need to cross existing traffic lanes, or at tie-in points. These will be kept to a minimum wherever possible.



Traffic at the Bearsted Road roundabout

A Temporary Traffic Regulation Order (TTRO) will be in place to allow for various road closures throughout the works. Most closures will take place overnight to minimise disruption. However, Bearsted Road from the New Cut Road roundabout through to Hockers Lane will need to close for a period to allow Openreach to complete ducting and cabling links into their existing network. These are essential for the safety of our workforce and the travelling public. We will maximise the work undertaken during these periods to reduce the need for further closures.

All major traffic management changes and road closures will be clearly advertised in advance.

Construction sites inevitably cause disruption but we will work to keep this to an absolute minimum. Your patience and understanding is greatly appreciated.

Contact information

For day to day queries during construction, the main point of contact will be the team on site:

Email: Bearstedroad@breheny.co.uk

Phone: 07976 367359

Kent County Council's contact channels will remain available for general enquiries about the scheme.