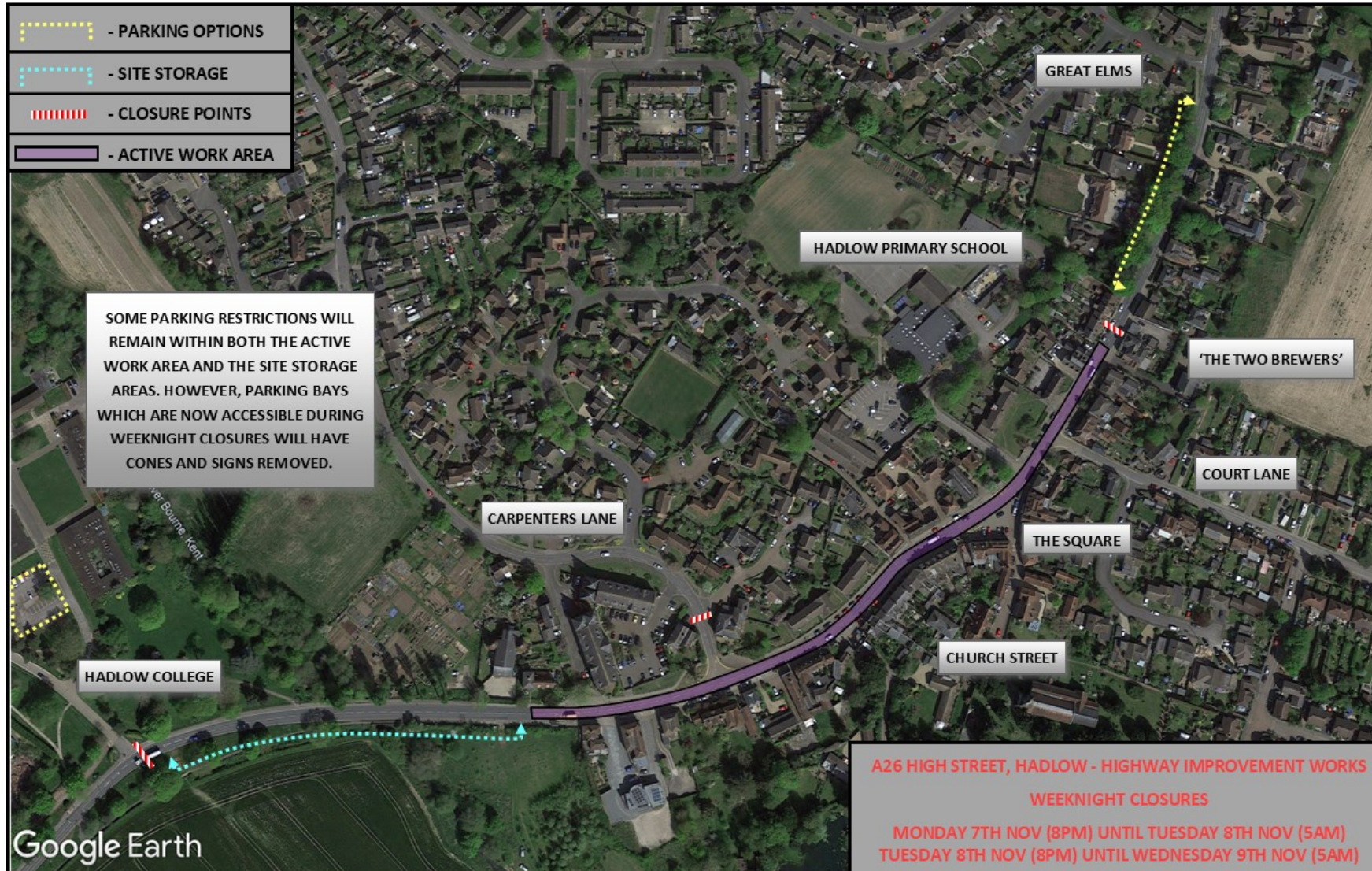


# Hadlow roadworks – Weeknight closure plan

For the weeknights of Monday 7 November and Tuesday 8 November 2022.

## Map of closure plan



## Plan details

### Closure area

We will be closing the A26 High Street in Hadlow between Hadlow College and 'The Two Brewers' Public House in both directions.

Within the closure area will be the active work area, which extends from 'The Two Brewers', to where the block pavers in the road finish when heading in the direction of Hadlow College.

The remaining sections of closed road will be used for the storage of work-related materials and vehicles which transport our machinery.

### Alternative parking for residents.

Parking for non-site traffic will not be possible in any location where yellow cones are positioned. We are expecting that some of the parking bays will remain useable during these final two weeknights.

On street parking between 'The Two Brewers' Public House and Great Elms will be a possible, alternative parking location.

Additionally, during these weeknights, it will be possible to park in the first car park within the Hadlow College grounds.