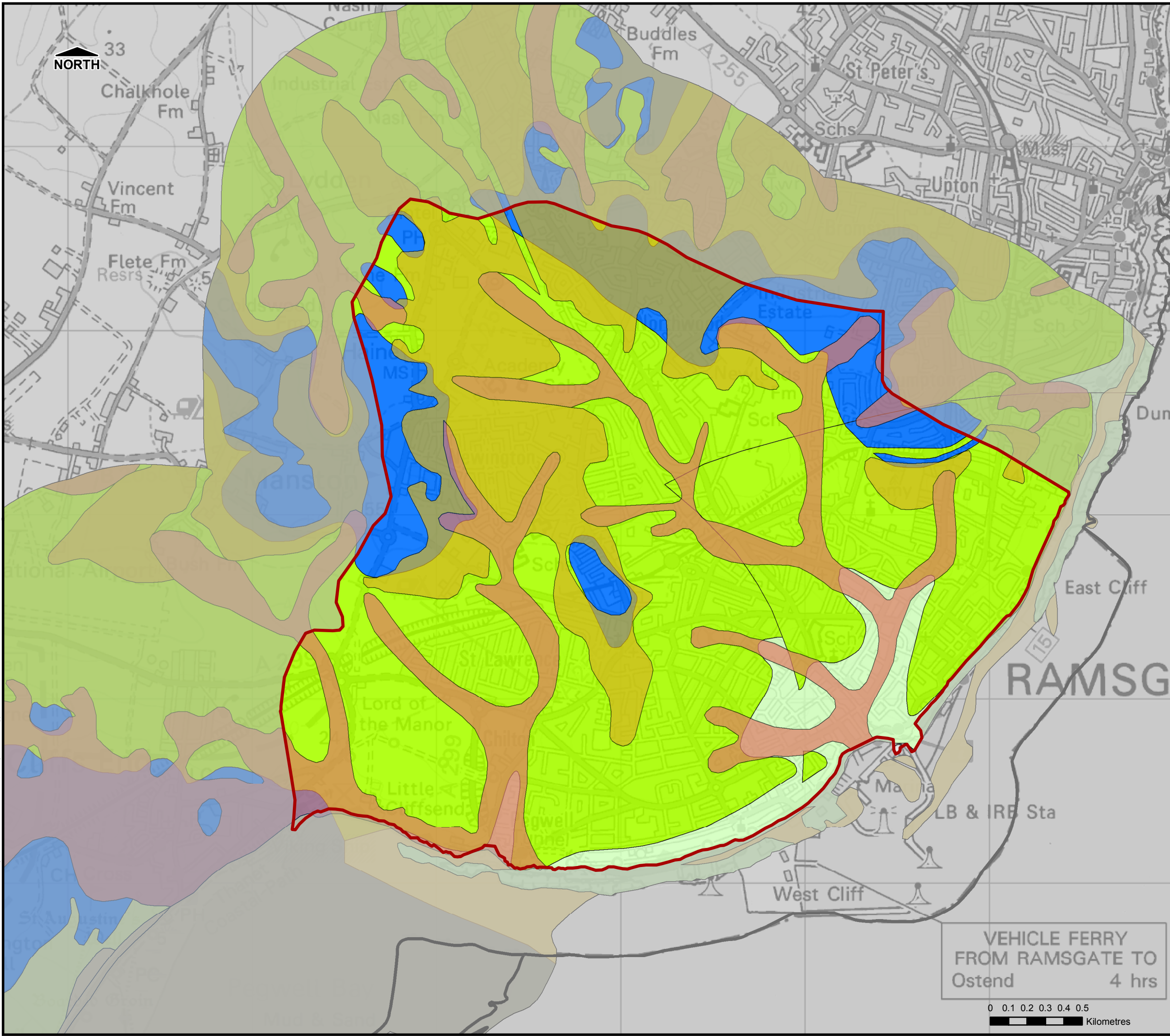


Filepath: P:\environment\ZVET\CS068891_Ramsgate_SWMP\GIS\ArcMxds\Fig04_Geology_002.mxd



THIS DRAWING MAY BE USED ONLY FOR
THE PURPOSE INTENDED

Legend



Study Area



TDC Administrative Boundary

Bedrock



Lewes Nodular, Seaford & Newhaven Chalk Formation (SNCK-CHLK)



Margate Chalk Member (MACK-CHLK)



Seaford Chalk Formation (SECK-CHLK)



Thanet Sand Formation (TAB-SSCL)

Superficial Deposits



Beach and Tidal Flat Deposits (BTFU-SAGR)



Beach and Tidal Flat Deposits (BTFU-SSCL)



Head (HEAD1-CLSI)



Head (HEAD2-CLSI)



Storm Beach Deposits (STOB-SAGR)



Tidal Flat Deposits (TFD-CLSI)

Notes

Ramsgate



Surface Water Management Plan

© Crown Copyright. All rights reserved Kent County Council.
Licence No.100019238 (2015). Covers all data that has been
supplied and distributed under license for the Ramsgate SWMP
project.

Scale at A3

1:20,000

Date

Mar. 2015

Drawn by

G.ATHANASIA

Approved by

M.ARTHUR

**Geological Map
Overview**

Consultant

CAPITA

Flood Risk Management

Capita
65 Gresham Street
London
EC2V 7NQ

FIGURE 3

VEHICLE FERRY
FROM RAMSGATE TO
Ostend 4 hrs

0 0.1 0.2 0.3 0.4 0.5
Kilometres