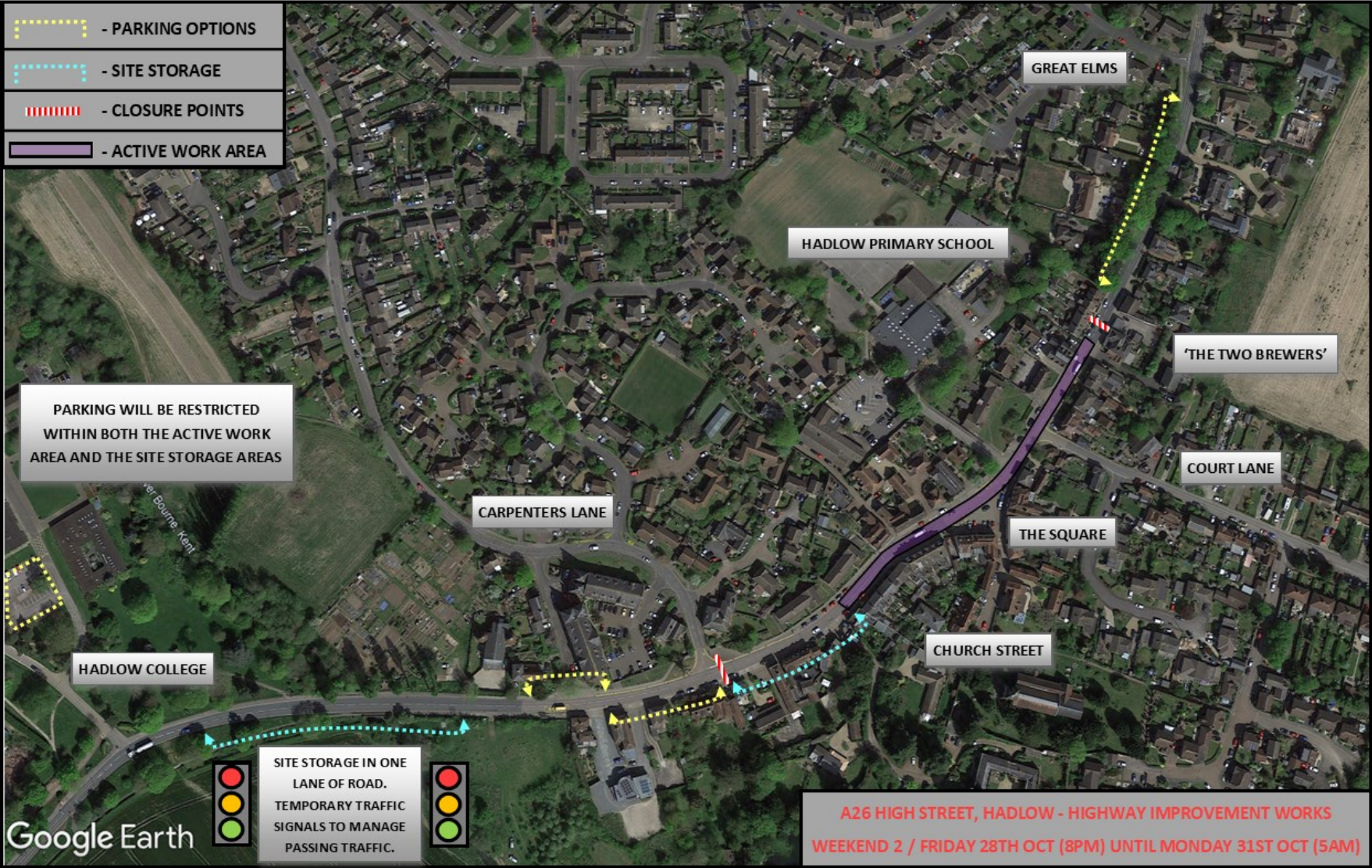


Hadlow roadworks – Weekend closure plan

For the weekend of Friday 28 October to Monday 31 October 2022.

Map of closure plan



Plan details

Closure area

We will be closing the A26 High Street in Hadlow between Carpenters Lane and 'The Two Brewers' Public House in both directions.

Within the closure area will be the active work area, which extends from Hadlow Castle to 'The Two Brewers' Public House.

The section between Hadlow Castle and Carpenters Lane will be used for the storage of work-related materials and vehicles which transport our machinery.

There will also be another area between Carpenters Lane and Hadlow College which will be allocated for site storage. This falls outside of the closed section of road and will be positioned in just one lane of the road so vehicles can still pass by. Two-way traffic flow will be managed by temporary traffic lights.

Alternative parking for residents.

Parking for non-site traffic will not be possible in either the active work area or the site storage area.

On street parking between 'The Two Brewers' Public House and Great Elms will be a possible, alternative parking location.

The first car park within the Hadlow College grounds will be accessible for parking.

Additionally, during this weekend, parking bays will be accessible from Carpenters Lane and towards Hadlow College.