

Kent Adult Social Care Provider Bulletin



Friday 8 October 2021

Adult Social Care Strategy consultation

After successful early public engagement and co-production workshops in Spring and Summer, we are now running a public consultation on our draft Adult Social Care Strategy.

Our person-focused vision and strategy summarise how we plan to make changes over the coming years to put the person first, improve all the time and measure what matters. The aim is to work with people in Kent and all our partners to turn our ambitions into reality.



We have heard feedback from people we support and carers that want to build a social care model in Kent that keeps the person at the heart of what we do, meets our duties under the law and promotes inclusive and innovative ways of working. This is just the beginning of our conversation over the next five years.

We are very keen to get as many views as possible on this, and especially those of the people we support.

We would be very grateful if you could encourage those that you support and their carers and families, and your teams to read the survey and complete the short questionnaire.

Please do take part in the consultation yourself, to have your say **before 24 October**. More information can be found here: [Adult Social Care Strategy | Let's talk Kent](#)

A variety of alternative formats are available and people can also take part in KCC libraries.

Live Longer Better network and learning virtual session

Thursday 21 October, 10am.

During the 90-minute session, which is aimed at stakeholders who provide services to support older people, you will learn more about how we can all work together to encourage longer, healthier and happier lives for older adults. Please see below for further details and how to book your place.

[Book your place at the network event](#)

Please share the invite via your networks and with other contacts who may be interested.

Laing Buisson Awards 2021

We were delighted to hear the news that KCC had been nominated as finalist for the work that was done to commission designated beds. KCC were one of the few authorities that were able to secure beds across the county during the pandemic for the use of Kent and Medway residents.



This ensured that people going to or returning to a care home, who were Covid positive could be discharged from hospital to a designated bed for their isolation period. KCC, MUA, CCG and the acute trusts worked together to ensure that people were discharged to reduce the risk of Covid transmission and the risk of further outbreaks within the care home market.

This collaboration was an example of what can be achieved when working together for mutual benefit. We are looking forward to the award ceremony and hope that we will go on to win and be recognised for all the hard work during the pandemic.

Free annual National Care Association Membership for Kent Providers

Funded by Kent County Council's Infection Control Fund.

nationalcareassociation.org.uk/members/kent-providers-membership-offer

NATIONAL CARE Association
The voice of the nation's independent care sector

Kent providers
FREE membership offer

We Can Help

FREE annual National Care Association Membership for
Kent Providers Funded by Kent County Council's Infection Control Fund

The graphic features a blue background with a white rope running horizontally. Three speech bubbles are hanging from the rope, each held by a different colored clothespin (blue, red, green). The speech bubbles contain the words 'We', 'Can', and 'Help' in blue, red, and green respectively. To the left of the rope is the National Care Association logo. To the right is a purple box with white text. At the bottom, there is a white box with blue text.

We are delighted to be able to offer all care providers in Kent the prestigious associate membership to National Care Association free for one year.

This offer has been funded by KCC to enable all Kent providers to remain up-to-date with the latest infection prevention and control guidance and information to support your care service with through this difficult time.

To take up this offer please complete the application form on the link below and return to info@nationalcareassociation.org.uk

Associate membership includes:

- Latest industry changes, guidance and news in your inbox in real time
- Members only information communicated via email
- Monthly round-up newsletter

- Benefits from discounted deals from our sponsors and suppliers
- Access to secure DBS service

Note: If you are a current National Care Association Member (on 13/10/2020) you are still eligible for this funding. You do not need to do anything! This 100% discount will be automatically applied to your next renewal!

More information can be found here: [Free annual NCA Membership for Kent Providers-736328](#)

Expired tests will be voided



Why are we reminding you of this?

Expired test kits are being received by our labs; these aren't valid and are automatically voided.

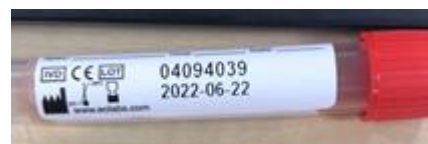
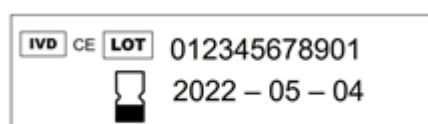
Check the box the tests were delivered in: The expiry date will be printed on a label affixed to the larger cardboard box that your tests are sent in.



Check the exterior plastic bag in each test kit: An expiry date may be printed on one of the plastic bags. Look out for the egg-timer symbol.



Check the vial: Expiry dates are added to some of the vials but not all. Look out for the egg-timer symbol.



How to get help and what to do if you think you have expired tests?

If you think you have been sent kits that have already expired please send an email with a photo attached of the expiry dates on the box, the packet and the vial to carehometesting@dhsc.gov.uk.

Supporting providers who have potential leavers due to compulsory vaccinations

A letter from KCC commissioning

To all managers



We are aware of the potential impact the compulsory vaccination requirement may have on some care homes in the county.

We would therefore like to highlight support available to providers to assist in filling any type of vacancy created by workers who leave, and by offering support to potential leavers, if required, to ensure valued and experienced workers remain within our local care sector.

Support for providers

The KCC Innovation Delivery Team is currently setting up a Prince's Trust programme to run from 20 October - 18 November for the care sector, which will highlight vacancies to 18-30 year olds looking for care work. Prior to interviews on 18 November, each candidate will receive a three-week programme, learning about the care certificate theory, employability skills and their unique strengths and values.

To include your vacancies in this programme, please email kentregisteredmanager@kent.gov.uk and you will receive a vacancy form to complete.

KiCA: free membership for all CQC registered Adult Social Care providers in Kent

The Kent Integrated Care Alliance (KiCA) is delighted to announce that due to funding received from Kent County Council, we are able to offer free KiCA membership from July 2021 - July 2022 for all CQC registered Adult Social Care providers in our county.



The sector has faced the most challenging times over the last 18 months and we will continue to support providers and be your voice for care in Kent. We represent all areas of the sector, residential, homecare, learning disabilities and mental health.

Don't miss this fantastic opportunity to join your local care association.

For further information, please visit www.kica.care or to register your organisation as a KiCA member, please contact louise.faulkner@kica.care

We look forward to working with you all again over the coming year.

Free Support to Complete the Data Security and Protection Toolkit

Kent County Council (KCC) in Partnership with Kent Integrated Care Alliance (KICA) are supporting social care providers across Kent and Medway to register on and complete the Data Security and Protection Toolkit (DSPT).

The DSPT is a free online self-assessment of your organisation's data and cyber security and is recognised as the official tool to evaluate your compliance with legal requirements, Data Security Standards and good practice. It is also required in order to access key services such as NHSmail, proxy ordering for medication and shared care records.



[Watch our introductory webinar online](#)

[Sign up to small-group virtual workshops and 1:1 sessions on our website](#) – free support to help you register and work through the toolkit.

Not sure where to start with this? Or got some questions? Please send us an email: dspt@kent.gov.uk