

Business Births, Deaths and Survival Rates in 2017

Related documents

[UK Business Counts](#) – business activity size and location

The Business Demography dataset is published annually by the Office for National Statistics (ONS) and is based on output from the VAT and PAYE administrative systems. The Business Demography dataset contains information on the births and deaths of businesses and their survival rates.

The Business Demography dataset is not the only information on businesses published by ONS. There is also the UK business: activity, size and location data set, which contains data on business by size-band and turnover. Although this is also based on combined VAT and PAYE data the counts of businesses are different because of differences in the reference dates.

Further information

Strategic Commissioning - Analytics
Kent County Council
Invicta House
Maidstone
Kent
ME14 1XX

Email:
research@kent.gov.uk

Tel: 03000 417444

Findings:

- In 2017 there were 835 fewer business births in than the previous year. This reflects what is seen both nationally and regionally.
- New enterprise birth rates in Kent fell from 13.3% in 2016 to 11.7% in 2017.
- There was a greater number of business deaths in Kent in 2017 (1,070) than was seen in the previous year. Again this reflects what is happening both nationally and regionally.
- Enterprise death rates in Kent increased from 10.0% in 2016 to 11.3% in 2017.
- The overall count of the number of active businesses is up on last year; Kent +2.5%, South East +1.9% and Great Britain +3.2%
- 1-year survival rates have increased slightly since the previous year. 1 year survival rates in Kent in 2017 were 90.9%, South East 91.6% and Great Britain 91.6%

Introduction

Business Demography is an annual dataset produced by the Office for National Statistics from an extract taken from the Inter-Departmental Business Register (IDBR). The publication focuses on changes to the registered business population, that is, those businesses registered at Her Majesty's Revenue and Customs (HMRC) for Value Added Tax (VAT) and/or Pay-As-You-Earn (PAYE) and at Companies House.

Tables in the publication provide data on births (start-ups), deaths (closures) and survival rates of businesses down to local authority district level.

The Office for National Statistics produces two sources of business survey data. In addition to the Business Demography dataset there is also the UK business: activity, size and location data set. This is also based on VAT/PAYE data and is covered in a separate bulletin entitled "UK Business Counts" (see website www.kent.gov.uk/research).

There are differences between these two data sets. Although both products are extracts from the IDBR the Business Demography returns a higher count of active businesses. The Business Demography counts all business activity taking place during the course of the whole financial year. A single enterprise could have been "born", gone out of business and then been "re-born" all within the same year. Each of these births would be counted individually. Similarly, it counts all businesses which have been active at any point within the year. These enterprises may have also closed within the time period but as long as they have been active during any part of the year they would have been counted as an active enterprise.

The UK business: activity, size and location data set counts businesses at a fixed point in time, usually during March and so provides a snapshot of businesses at that point in time.

The latest data from the Business Demography dataset is for 2017 and the tables presented in this bulletin cover the period 2004-2017. The Business Demography dataset uses the term "enterprises". For the purposes of this bulletin enterprises and businesses should be taken as referring to the same thing.

This bulletin will be updated in December 2019.

Business births, deaths and stock

The number of business births, deaths and stock for the Kent Districts and Medway, from 2004-2017.

The data shows the impact on business creation and survival during the pre- and post- recession periods. A clearer picture is now emerging about the impact of the recession. While some areas continued to see declines in the numbers of businesses in the first years following the recession, the latest data shows that the number of births has been consistently outweighing the number of deaths over the last three years, showing encouraging signs of sustained growth.

Tables 1 & 2 show enterprise births (count and rate)

Tables 3 & 4 show enterprise deaths (count and rates)

Table 5 shows the ratio of enterprise births to deaths.

Table 6 shows the stock of active enterprises

Table 1: Count of births of new enterprises

Count of births of new enterprises for 2004 - 2017															Change 2004-2017		Change 2016 - 2017	
	2004	2005	2006	2007	2008	2009	2010	2011	2012	2013	2014	2015	2016	2017	No.	%	No.	%
UNITED KINGDOM	280,080	274,855	255,530	280,730	267,445	236,030	235,145	261,370	269,250	346,275	350,305	382,755	413,900	381,885	101,805	36.3%	-32,015	-7.7%
GREAT BRITAIN	274,350	269,220	249,950	274,770	261,790	232,085	230,555	257,625	265,315	341,420	345,500	377,315	407,965	375,030	100,680	36.7%	-32,935	-8.1%
ENGLAND AND WALES	259,975	252,285	234,880	256,605	245,565	217,360	215,025	240,685	247,930	319,885	324,265	355,590	385,695	353,465	93,490	36.0%	-32,230	-8.4%
ENGLAND	248,450	241,410	225,120	246,700	236,345	209,035	207,520	232,460	239,660	308,565	312,920	344,065	373,580	339,345	90,895	36.6%	-34,235	-9.2%
SOUTH EAST GOR	44,345	42,555	39,195	42,320	40,365	36,320	36,910	40,775	41,245	50,895	51,280	55,585	55,955	51,965	7,620	17.2%	-3,990	-7.1%
Kent County	6,940	6,470	6,265	6,785	6,170	5,445	5,380	6,190	6,325	7,745	7,680	8,335	8,730	7,895	955	13.8%	-835	-9.6%
Ashford	635	590	620	685	640	515	510	580	565	705	700	715	885	730	95	15.0%	-155	-17.5%
Canterbury	615	605	565	625	550	460	515	525	535	690	650	700	740	655	40	6.5%	-85	-11.5%
Dartford	440	395	425	420	385	375	385	430	480	605	630	735	740	660	220	50.0%	-80	-10.8%
Dover	385	350	380	335	325	290	260	345	340	440	405	395	465	415	30	7.8%	-50	-10.8%
Gravesham	395	380	370	390	375	330	300	405	425	535	560	670	695	630	235	59.5%	-65	-9.4%
Maidstone	890	815	705	835	705	610	640	650	760	880	920	1,020	965	970	80	9.0%	5	0.5%
Sevenoaks	715	625	615	800	645	575	595	725	695	850	735	890	815	745	30	4.2%	-70	-8.6%
Folkestone & Hythe	420	455	430	410	395	375	335	440	530	470	450	500	580	455	35	8.3%	-125	-21.6%
Swale	550	550	585	550	470	445	390	475	445	560	575	650	695	585	35	6.4%	-110	-15.8%
Thanet	535	470	440	490	420	360	385	400	390	535	525	545	595	580	45	8.4%	-15	-2.5%
Tonbridge and Malling	640	590	550	595	585	525	490	550	545	675	715	775	770	730	90	14.1%	-40	-5.2%
Tunbridge Wells	720	645	580	650	675	585	575	665	615	800	815	740	785	740	20	2.8%	-45	-5.7%
Kent & Medway	7,910	7,450	7,145	7,675	7,070	6,185	6,125	7,065	7,265	8,960	8,910	9,705	10,200	9,200	1,290	16.3%	-1,000	-9.8%
Medway UA	970	980	880	890	900	740	745	875	940	1,215	1,230	1,370	1,470	1,305	335	34.5%	-165	-11.2%

All numbers rounded individually.
 Source: Business Demography Dataset, ONS
 Presented by: Strategic Commissioning - Analytics, Kent County Council

Table 2: New enterprise birth rates

New enterprise birth rate 20014-2017

	2004	2005	2006	2007	2008	2009	2010	2011	2012	2013	2014	2015	2016	2017
UNITED KINGDOM	13.0	12.6	11.6	12.3	11.5	10.1	10.0	11.2	11.3	14.1	13.7	14.3	14.6	13.1
GREAT BRITAIN	13.0	12.6	11.6	12.4	11.6	10.2	10.1	11.3	11.5	14.3	13.8	14.4	14.7	13.1
ENGLAND AND WALES	13.2	12.7	11.7	12.3	11.6	10.2	10.1	11.3	11.5	14.3	13.9	14.6	14.9	13.2
ENGLAND	13.2	12.7	11.7	12.4	11.7	10.2	10.1	11.4	11.6	14.4	14.0	14.7	15.0	13.2
SOUTH EAST GOR	12.5	12.0	11.0	11.5	10.8	9.7	9.8	10.8	10.8	13.1	12.7	13.2	12.8	11.6
Kent County	13.2	12.1	11.7	12.3	11.0	9.7	9.6	11.0	11.1	13.3	12.8	13.4	13.3	11.7
Ashford	13.0	12.0	12.6	13.2	11.9	9.5	9.4	10.8	10.6	13.0	12.8	12.6	14.5	11.5
Canterbury	13.0	12.6	11.6	12.4	10.9	9.1	10.1	10.3	10.5	13.1	12.0	12.6	12.9	11.2
Dartford	14.8	13.3	13.7	13.1	11.8	11.4	11.5	12.8	13.7	16.4	16.0	17.2	15.9	13.4
Dover	12.5	11.3	12.3	10.6	10.3	9.2	8.4	11.1	10.7	13.3	12.1	11.7	13.0	11.4
Gravesham	13.1	12.6	12.3	12.6	12.2	10.6	9.7	12.9	13.2	15.9	15.6	17.1	16.4	14.3
Maidstone	13.9	12.5	10.8	12.4	10.5	9.0	9.5	9.7	11.2	12.8	13.0	13.8	12.4	12.2
Sevenoaks	12.0	10.5	10.2	12.8	10.1	9.0	9.2	11.0	10.6	12.6	10.9	12.7	11.3	10.4
Folkestone & Hythe	12.3	13.2	12.6	11.6	11.0	10.5	9.5	12.3	14.4	12.8	12.0	13.0	14.2	11.0
Swale	13.0	12.6	13.0	12.0	10.5	10.0	8.8	10.9	10.3	12.7	12.7	13.6	13.7	11.3
Thanet	15.3	13.4	12.6	13.4	11.6	9.9	10.5	11.2	10.9	14.6	13.9	13.9	14.1	13.4
Tonbridge and Malling	13.3	12.0	11.1	11.7	11.1	9.9	9.4	10.5	10.3	12.5	12.8	13.2	12.6	11.4
Tunbridge Wells	12.6	11.2	10.0	11.1	11.3	9.7	9.3	10.7	9.9	12.4	12.4	11.0	11.3	10.6
Kent & Medway	13.2	12.3	11.7	12.2	11.2	9.8	9.6	11.1	11.3	13.6	13.1	13.6	13.6	11.9
Medway UA	13.7	13.6	12.0	12.1	12.2	10.1	10.1	11.9	12.5	15.6	15.0	15.6	15.6	13.4

All numbers rounded individually.

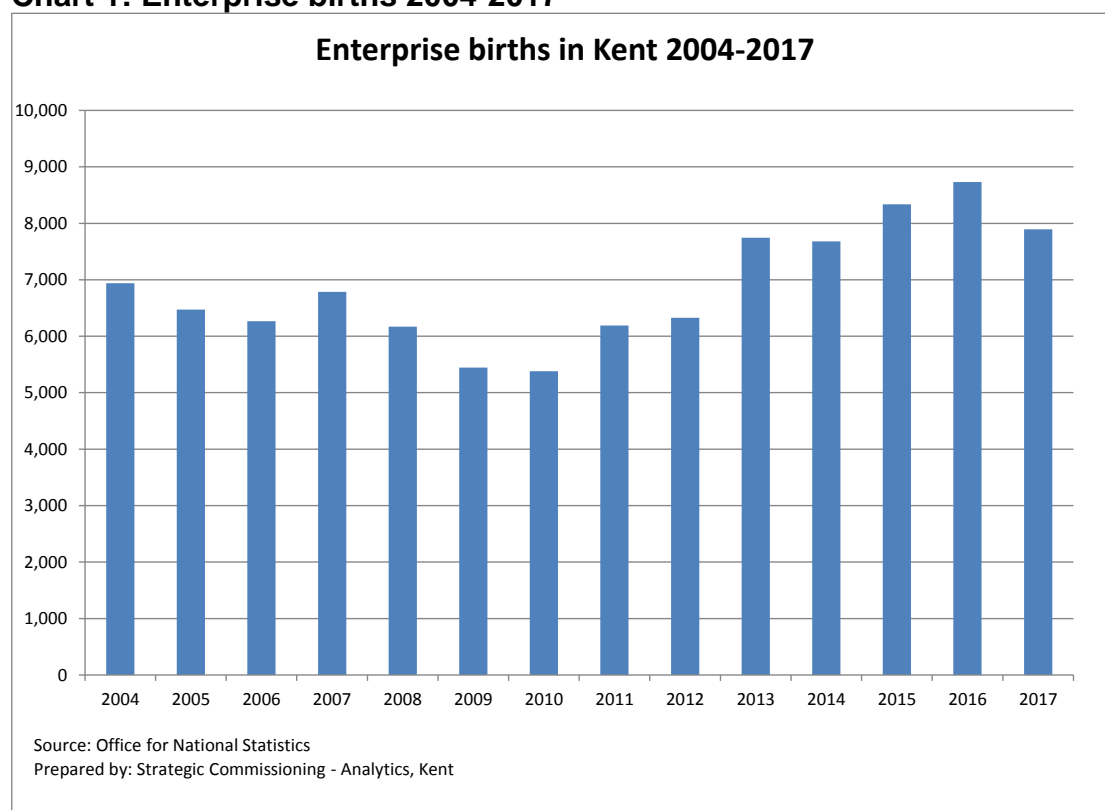
Source: Business Demography Dataset, ONS

Presented by: Strategic Commissioning - Analytics, Kent County Council

Between 2004 and 2010 Kent saw a general trend of decline in business births, despite gains in some areas during 2007. Overall since 2010 the number of business births has grown however there were fewer births in 2017 than seen in either of the previous two years. This pattern is also reflected nationally and regionally. The Office for National Statistics suggest that potential uncertainty related to the UK's future relationship with the EU could have been a cause for the sharp decline in the rate of business births in 2017, along with the slowing broader economy and the depreciation of sterling following the EU referendum.

In 2017 there were 7,895 business births in Kent. This was 9.6% lower than the previous year (835 fewer business births). All Kent local authority districts saw fewer business births, with the exception of Maidstone which saw 5 more business births than was seen in 2016.

Chart 1: Enterprise births 2004-2017



The enterprise birth rate in Kent in 2017 was 11.7%, down from 13.3% the previous year. Enterprise birth rates are calculated as business births divided by total active businesses.

Table 3: Count of deaths of enterprises

	2004	2005	2006	2007	2008	2009	2010	2011	2012	2013	2014	2015	2016	2017	Change 2004-2017		Change 2016 - 2017	
															No.	%	No.	%
UNITED KINGDOM	243,615	228,155	207,125	223,600	222,560	277,435	248,595	229,525	252,085	237,025	246,190	281,995	287,805	356,815	113,200	48.5%	69,010	24.0%
GREAT BRITAIN	239,705	224,580	203,350	219,840	218,380	272,265	243,405	224,745	246,960	232,105	241,790	277,875	283,530	351,875	112,170	46.8%	68,345	24.1%
ENGLAND AND WALES	224,985	210,920	190,755	207,820	205,385	257,180	228,220	210,775	230,415	217,255	226,175	259,615	264,650	331,535	106,550	47.4%	66,885	25.3%
ENGLAND	215,995	202,210	182,800	199,300	196,695	247,150	219,030	202,365	221,465	209,010	217,645	249,995	255,075	320,810	104,815	48.5%	65,735	25.8%
SOUTH EAST GOR	39,280	36,345	32,660	35,090	33,790	42,550	38,285	35,855	39,000	36,690	36,765	42,065	42,925	48,295	9,015	23.0%	5,370	12.5%
Kent County	5,750	5,800	5,110	5,680	5,390	6,340	5,870	5,580	6,025	5,875	5,700	6,390	6,550	7,620	1,870	32.5%	1,070	16.3%
Ashford	525	610	450	510	530	635	635	610	600	605	525	605	625	740	215	41.0%	115	18.4%
Canterbury	495	535	430	550	505	550	485	505	510	535	525	615	545	665	170	34.3%	120	22.0%
Dartford	375	310	315	345	345	400	365	325	385	350	390	435	465	640	265	70.7%	175	37.6%
Dover	345	375	250	305	310	360	300	285	315	345	320	360	345	410	65	18.8%	65	18.8%
Gravesham	360	370	310	375	325	385	350	335	380	345	375	445	440	555	195	54.2%	115	26.1%
Maidstone	655	690	660	665	650	785	660	660	700	660	695	725	815	860	205	31.3%	45	5.5%
Sevenoaks	565	580	560	545	495	650	585	620	640	620	570	660	650	685	120	21.2%	35	5.4%
Folkestone & Hythe	400	440	320	385	375	430	390	360	445	385	370	415	390	525	125	31.3%	135	34.6%
Swale	440	430	455	540	470	540	500	445	475	410	390	465	465	545	105	23.9%	80	17.2%
Thanet	470	440	335	425	375	415	440	400	425	400	395	390	475	505	35	7.4%	30	6.3%
Tonbridge and Malling	485	490	455	465	480	575	535	450	515	510	480	575	560	670	185	38.1%	110	19.6%
Tunbridge Wells	635	530	570	570	530	615	625	585	635	710	665	700	775	820	185	29.1%	45	5.8%
Kent & Medway	6,585	6,550	5,945	6,545	6,170	7,235	6,665	6,295	6,900	6,625	6,585	7,355	7,590	8,870	2,285	34.7%	1,280	16.9%
Medway UA	835	750	835	865	780	895	795	715	875	750	885	965	1,040	1,250	415	49.7%	210	20.2%

All numbers rounded individually.

Source: Business Demography Dataset, ONS

Presented by: Strategic Commissioning - Analytics, Kent County Council

Table 4: Enterprise death rates

Enterprise death rates 2004 - 2017

	2004	2005	2006	2007	2008	2009	2010	2011	2012	2013	2014	2015	2016	2017
UNITED KINGDOM	11.3	10.5	9.4	9.8	9.6	11.8	10.6	9.8	10.6	9.7	9.7	10.6	10.2	12.2
GREAT BRITAIN	11.4	10.5	9.5	9.9	9.6	11.9	10.6	9.8	10.7	9.7	9.7	10.6	10.2	12.3
ENGLAND AND WALES	11.4	10.6	9.5	10.0	9.7	12.1	10.7	9.9	10.7	9.7	9.7	10.6	10.2	12.4
ENGLAND	11.5	10.6	9.5	10.0	9.7	12.1	10.7	9.9	10.7	9.8	9.7	10.6	10.2	12.4
SOUTH EAST GOR	11.1	10.2	9.1	9.6	9.1	11.3	10.1	9.5	10.2	9.4	9.1	10.0	9.8	10.8
Kent County	10.9	10.9	9.5	10.3	9.6	11.3	10.4	9.9	10.6	10.1	9.5	10.2	10.0	11.3
Ashford	10.8	12.4	9.1	9.9	9.8	11.8	11.7	11.4	11.2	11.2	9.6	10.6	10.3	11.7
Canterbury	10.5	11.1	8.9	10.9	10.0	10.9	9.5	9.9	10.0	10.1	9.7	11.1	9.5	11.4
Dartford	12.6	10.4	10.2	10.7	10.6	12.2	10.9	9.7	11.0	9.5	9.9	10.2	10.0	13.0
Dover	11.2	12.2	8.1	9.6	9.8	11.5	9.7	9.1	9.9	10.4	9.6	10.6	9.7	11.3
Gravesham	12.0	12.3	10.3	12.1	10.5	12.4	11.3	10.7	11.8	10.3	10.5	11.4	10.4	12.6
Maidstone	10.2	10.5	10.1	9.9	9.7	11.6	9.8	9.9	10.4	9.6	9.8	9.8	10.5	10.8
Sevenoaks	9.5	9.7	9.3	8.7	7.8	10.2	9.0	9.4	9.7	9.2	8.5	9.4	9.0	9.6
Folkestone & Hythe	11.7	12.8	9.3	10.9	10.5	12.1	11.0	10.1	12.1	10.5	9.9	10.8	9.6	12.7
Swale	10.4	9.9	10.1	11.8	10.5	12.1	11.3	10.2	11.0	9.3	8.6	9.7	9.1	10.5
Thanet	13.5	12.6	9.6	11.6	10.3	11.4	12.0	11.2	11.9	10.9	10.5	9.9	11.3	11.7
Tonbridge and Malling	10.1	10.0	9.2	9.1	9.1	10.9	10.2	8.6	9.7	9.4	8.6	9.8	9.2	10.5
Tunbridge Wells	11.1	9.2	9.9	9.7	8.8	10.2	10.1	9.4	10.2	11.0	10.1	10.4	11.2	11.7
Kent & Medway	11.0	10.8	9.7	10.4	9.7	11.4	10.5	9.9	10.7	10.0	9.7	10.3	10.1	11.5
Medway UA	11.8	10.4	11.4	11.7	10.6	12.2	10.8	9.7	11.7	9.6	10.8	11.0	11.0	12.8

All numbers rounded individually.

Source: Business Demography Dataset, ONS

Presented by: Strategic Commissioning - Analytics, Kent County Council

Table 3 shows the number of business deaths from 2004 to 2017. It shows that over the last year, there has been an increase in the number of enterprise deaths in all Kent districts. The number of enterprise deaths has increased rapidly over the last two years and in 2017 Kent saw more businesses fail than in 2009 (mid recession).

Enterprise death rates have increased to 11.3% from 10.0% in 2016.

Chart 2: Business Deaths 2004-2017

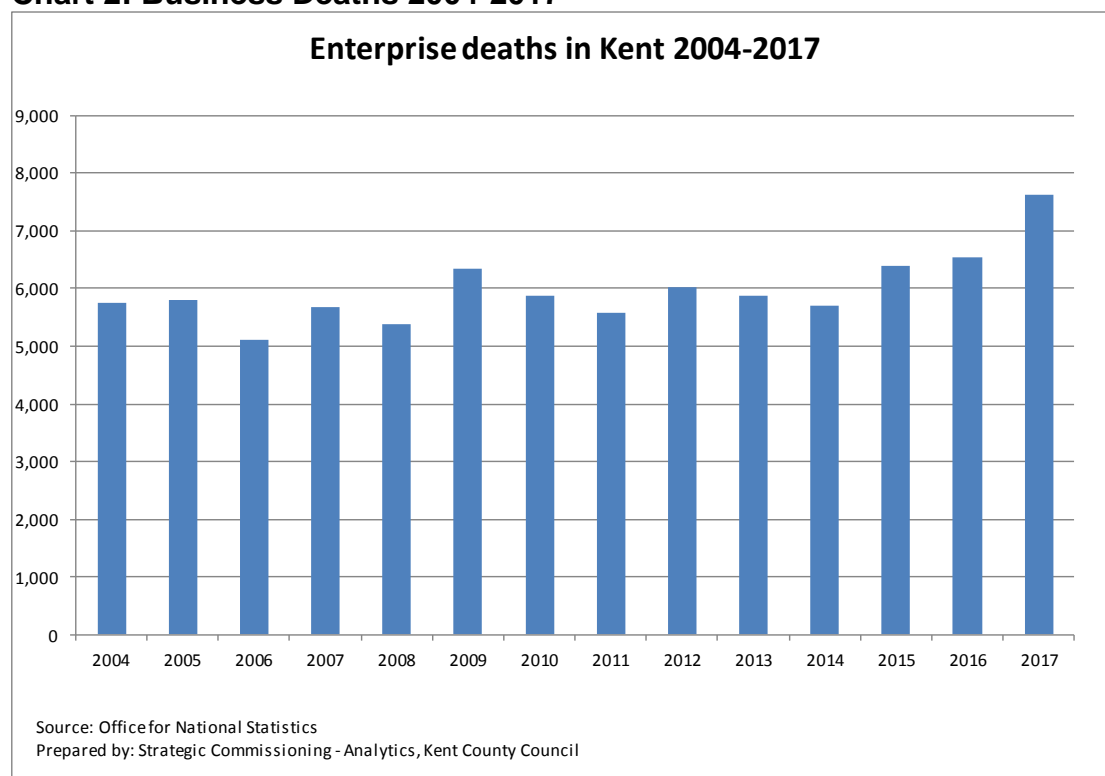


Table 5 shows the ratio of business births to deaths, over the period 2004 to 2017. A ratio of births to deaths above 1.0 means that there were more enterprise births than deaths.

The table clearly shows the effects of the recession between 2009 and 2012. The ratio of births to deaths made a significant recovery in 2013 which was largely maintained into 2016. However, in 2017, while the number of enterprise births in Kent was still greater than the number of deaths the ratio had fallen to its lowest level in six years.

In 2017 four of Kent districts had enterprise birth to death ratios less than 1.0, meaning that the number of enterprise deaths was greater than the number of enterprise births. Folkestone & Hythe had the lowest ratio of births to deaths (0.87).

The highest enterprise birth to death ratio was in Thanet (1.15).

Table 5: Ratio of enterprise births to deaths

	2004	2005	2006	2007	2008	2009	2010	2011	2012	2013	2014	2015	2016	2017
UNITED KINGDOM	1.15	1.20	1.23	1.26	1.20	0.85	0.95	1.14	1.07	1.46	1.42	1.36	1.44	1.07
GREAT BRITAIN	1.14	1.20	1.23	1.25	1.20	0.85	0.95	1.15	1.07	1.47	1.43	1.36	1.44	1.07
ENGLAND AND WALES	1.16	1.20	1.23	1.23	1.20	0.85	0.94	1.14	1.08	1.47	1.43	1.37	1.46	1.07
ENGLAND	1.15	1.19	1.23	1.24	1.20	0.85	0.95	1.15	1.08	1.48	1.44	1.38	1.46	1.06
SOUTH EAST GOR	1.13	1.17	1.20	1.21	1.19	0.85	0.96	1.14	1.06	1.39	1.39	1.32	1.30	1.08
Kent County	1.21	1.12	1.23	1.19	1.14	0.86	0.92	1.11	1.05	1.32	1.35	1.30	1.33	1.04
Ashford	1.21	0.97	1.38	1.34	1.21	0.81	0.80	0.95	0.94	1.17	1.33	1.18	1.42	0.99
Canterbury	1.24	1.13	1.31	1.14	1.09	0.84	1.06	1.04	1.05	1.29	1.24	1.14	1.36	0.98
Dartford	1.17	1.27	1.35	1.22	1.12	0.94	1.05	1.32	1.25	1.73	1.62	1.69	1.59	1.03
Dover	1.12	0.93	1.52	1.10	1.05	0.81	0.87	1.21	1.08	1.28	1.27	1.10	1.35	1.01
Gravesham	1.10	1.03	1.19	1.04	1.15	0.86	0.86	1.21	1.12	1.55	1.49	1.51	1.58	1.14
Maidstone	1.36	1.18	1.07	1.26	1.08	0.78	0.97	0.98	1.09	1.33	1.32	1.41	1.18	1.13
Sevenoaks	1.27	1.08	1.10	1.47	1.30	0.88	1.02	1.17	1.09	1.37	1.29	1.35	1.25	1.09
Folkestone & Hythe	1.05	1.03	1.34	1.06	1.05	0.87	0.86	1.22	1.19	1.22	1.22	1.20	1.49	0.87
Swale	1.25	1.28	1.29	1.02	1.00	0.82	0.78	1.07	0.94	1.37	1.47	1.40	1.49	1.07
Thanet	1.14	1.07	1.31	1.15	1.12	0.87	0.88	1.00	0.92	1.34	1.33	1.40	1.25	1.15
Tonbridge and Malling	1.32	1.20	1.21	1.28	1.22	0.91	0.92	1.22	1.06	1.32	1.49	1.35	1.38	1.09
Tunbridge Wells	1.13	1.22	1.02	1.14	1.27	0.95	0.92	1.14	0.97	1.13	1.23	1.06	1.01	0.90
Medway UA	1.16	1.31	1.05	1.03	1.15	0.83	0.94	1.22	1.07	1.62	1.39	1.42	1.41	1.04

A ratio less than 1 indicates that the number of deaths is greater than the number of births.

Source: Business Demography Dataset, ONS

Presented by: Strategic Commissioning - Analytics, Kent County Council

Table 6: Count of active enterprises

Active enterprises 2004-2017															Change 2004-2017		Change 2016 - 2017	
	2004	2005	2006	2007	2008	2009	2010	2011	2012	2013	2014	2015	2016	2017	No.	%	No.	%
UNITED KINGDOM	2,158,555	2,182,750	2,207,290	2,280,215	2,325,770	2,341,900	2,351,425	2,342,595	2,372,645	2,448,530	2,550,595	2,671,700	2,833,510	2,925,600	767,045	35.5%	92,090	3.3%
GREAT BRITAIN	2,106,730	2,129,255	2,151,845	2,222,555	2,265,740	2,282,200	2,292,440	2,285,225	2,316,390	2,392,750	2,495,355	2,615,640	2,775,485	2,864,990	758,260	36.0%	89,505	3.2%
ENGLAND AND WALES	1,971,475	1,992,270	2,013,285	2,078,350	2,116,730	2,131,275	2,136,745	2,129,570	2,158,075	2,230,520	2,327,495	2,442,750	2,597,050	2,683,395	711,920	36.1%	86,345	3.3%
ENGLAND	1,885,265	1,904,490	1,924,485	1,987,590	2,024,990	2,040,150	2,046,310	2,040,980	2,070,085	2,140,770	2,235,050	2,347,740	2,498,605	2,580,505	695,240	36.9%	81,900	3.3%
SOUTH EAST GOR	353,770	355,905	357,215	366,680	372,810	375,595	377,315	376,380	380,620	389,710	403,070	420,270	438,315	446,665	92,895	26.3%	8,350	1.9%
Kent County	52,675	53,285	53,705	55,375	56,020	56,100	56,305	56,310	56,775	58,265	59,815	62,410	65,645	67,260	14,585	27.7%	1,615	2.5%
Ashford	4,875	4,935	4,935	5,175	5,400	5,400	5,435	5,360	5,340	5,415	5,490	5,690	6,095	6,330	1,455	29.8%	235	3.9%
Canterbury	4,725	4,820	4,850	5,045	5,045	5,030	5,095	5,105	5,110	5,280	5,405	5,560	5,745	5,825	1,100	23.3%	80	1.4%
Dartford	2,970	2,980	3,095	3,210	3,250	3,280	3,340	3,365	3,495	3,680	3,930	4,270	4,655	4,925	1,955	65.8%	270	5.8%
Dover	3,085	3,085	3,095	3,175	3,170	3,140	3,100	3,115	3,180	3,305	3,345	3,390	3,565	3,640	555	18.0%	75	2.1%
Gravesham	3,005	3,010	3,010	3,090	3,085	3,100	3,095	3,135	3,225	3,365	3,585	3,920	4,230	4,405	1,400	46.6%	175	4.1%
Maidstone	6,410	6,545	6,550	6,715	6,735	6,770	6,720	6,685	6,760	6,885	7,080	7,410	7,755	7,935	1,525	23.8%	180	2.3%
Sevenoaks	5,940	5,980	6,030	6,260	6,370	6,385	6,490	6,565	6,585	6,730	6,745	7,010	7,190	7,145	1,205	20.3%	-45	-0.6%
Folkestone & Hythe	3,405	3,440	3,425	3,525	3,585	3,565	3,535	3,575	3,690	3,675	3,735	3,855	4,080	4,150	745	21.9%	70	1.7%
Swale	4,225	4,350	4,490	4,585	4,485	4,460	4,410	4,350	4,330	4,405	4,545	4,780	5,085	5,185	960	22.7%	100	2.0%
Thanet	3,490	3,495	3,495	3,650	3,625	3,630	3,675	3,590	3,565	3,655	3,775	3,935	4,210	4,325	835	23.9%	115	2.7%
Tonbridge and Malling	4,810	4,905	4,955	5,090	5,280	5,295	5,235	5,250	5,285	5,410	5,595	5,875	6,095	6,395	1,585	33.0%	300	4.9%
Tunbridge Wells	5,735	5,740	5,775	5,855	5,990	6,045	6,175	6,225	6,210	6,460	6,585	6,715	6,940	7,000	1,265	22.1%	60	0.9%
Kent & Medway	59,755	60,485	61,045	62,760	63,385	63,420	63,670	63,650	64,285	66,045	68,040	71,175	75,060	77,000	17,245	28.9%	1,940	2.6%
Medway UA	7,080	7,200	7,340	7,385	7,365	7,320	7,365	7,340	7,510	7,780	8,225	8,765	9,415	9,740	2,660	37.6%	325	3.5%

All numbers rounded individually.

Source: Business Demography Dataset, ONS

Presented by: Strategic Commissioning - Analytics, Kent County Council

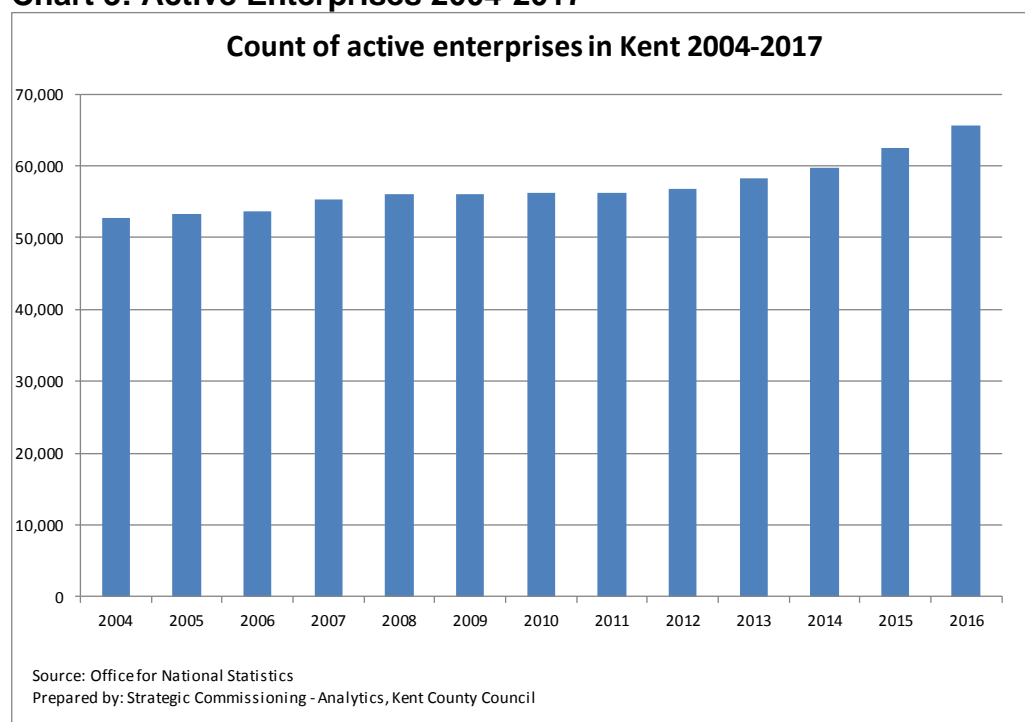
Table 6 shows the change in the number of active enterprises (business stock) over the period 2004-2017.

The table shows that between 2004 and 2017 the number of active businesses in Kent grew by 27.7% (Great Britain +36.0%, South East Region +26.3%). Within Kent all districts saw growth in the number of active enterprises since 2004. The highest growth was seen in Dartford (+65.8% or 1,955 businesses). Dover district saw the smallest growth (+18.0% or 555 businesses).

Over the last year (2016-2017) Kent saw an increase of 2.5% in active enterprises, lower than was seen nationally (+3.2%) but higher than was seen in the South East as a whole (+1.9%)

All areas of Kent have seen growth in the number of active enterprises over the last year with the exception of Sevenoaks which saw 45 fewer active enterprises than the year before. Dartford saw the highest percentage growth (+5.8%) while Tonbridge & Malling saw the highest growth in the number of active enterprises (+300).

Chart 3: Active Enterprises 2004-2017



Survival rates

Survival rate data looks at the annual survival rates for newly born businesses for the first 5 years of their existence. So, it is possible to look at survival rates for each of the first five years of a newly created business.

One year survival rates

One year survival rates for newly formed businesses in Kent are presented in chart 4.

In 2017 one year business survival rates in Kent (90.9%) were below the national (91.6%) and the regional (91.6%) rates. Each of these areas have seen a small increase in one year survival rates.

Tunbridge Wells district had the highest one year survival rate in the county with 93.0% of new enterprises surviving their first year of trading.

The lowest survival rates were in Folkestone and Hythe (88.8%) however this was higher than the previous year when 86.0% of businesses survived the first year.

Seven authorities in Kent saw one year survival rates increase since 2016.

Chart 4: 1 year business survival rates in Kent

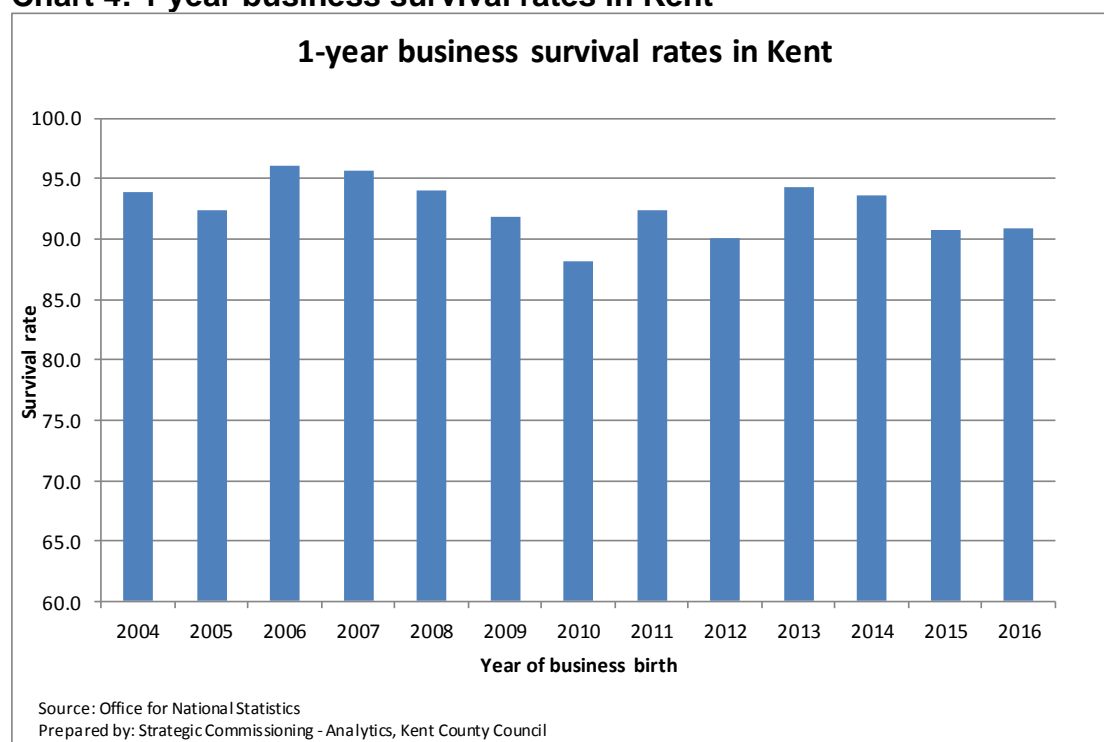


Table 7 looks at one-year survival rates for businesses formed in each year from 2004 to 2016, to show how the level of first-year survivors has changed over time.

Table 7: First year survival rates of newly born enterprises

	Year of birth													
	2004 1 Year per cent	2005 1 Year per cent	2006 1 Year per cent	2007 1 Year per cent	2008 1 Year per cent	2009 1 Year per cent	2010 1 Year per cent	2011 1 Year per cent	2012 1 Year per cent	2013 1 Year per cent	2014 1 Year per cent	2015 1 Year per cent	2016 1 Year per cent	
UNITED KINGDOM	94.2	94.3	96.5	95.4	92.0	90.8	86.7	93.1	91.2	93.5	92.2	89.7	91.5	
GREAT BRITAIN	94.2	94.3	96.5	95.4	92.2	90.9	86.7	93.1	91.2	93.6	92.2	89.7	91.6	
ENGLAND AND WALES	94.2	94.3	96.5	95.4	92.2	90.9	86.8	93.1	91.2	93.5	92.2	89.7	91.6	
ENGLAND	94.2	94.3	96.5	95.4	92.1	90.9	86.8	93.1	91.1	93.5	92.2	89.6	91.6	
SOUTH EAST GOR	94.5	94.7	97.0	96.2	93.2	91.6	87.9	93.6	91.1	94.0	93.2	90.6	91.6	
Kent County	93.9	92.4	96.0	95.7	94.0	91.8	88.2	92.4	90.0	94.3	93.6	90.8	90.9	
Ashford	96.1	89.0	96.0	102.9	93.8	93.2	88.2	93.1	90.3	93.6	94.3	88.1	89.8	
Canterbury	92.7	89.3	95.6	92.0	96.3	90.2	88.3	93.3	94.4	94.9	93.1	92.1	91.2	
Dartford	94.3	93.7	97.6	97.6	92.2	92	85.7	95.3	91.7	95.0	95.2	91.2	92.6	
Dover	90.9	90.0	94.7	92.5	93.9	96.6	88.5	92.8	92.6	96.6	91.4	91.1	91.4	
Gravesham	92.4	90.8	97.3	98.7	96.0	93.9	91.7	95.1	91.8	95.3	95.5	91.8	91.4	
Maidstone	93.8	93.3	94.3	94.0	95.7	92.6	89.1	94.6	92.8	94.9	94.0	93.1	89.6	
Sevenoaks	95.1	95.2	96.7	93.1	92.2	92.2	87.4	93.8	92.1	92.4	91.8	89.9	89.6	
Folkestone & Hythe	94.0	89.0	95.3	96.3	93.7	86.7	86.6	72.7	67.0	90.4	90.0	86.0	88.8	
Swale	95.5	93.6	95.7	92.7	93.6	91	88.5	94.7	92.1	96.4	94.8	92.3	92.8	
Thanet	90.7	91.5	95.5	94.9	95.2	91.7	88.3	95.0	93.6	96.3	93.3	91.7	89.9	
Tonbridge and Malling	96.1	96.6	96.4	100.0	94.0	89.5	88.8	91.8	91.7	93.3	94.4	88.4	90.9	
Tunbridge Wells	93.8	94.6	97.4	93.8	91.9	93.2	87.8	94.0	90.2	93.8	93.3	91.9	93.0	
Medway UA	93.8	94.9	96.6	93.3	93.9	93.2	91.3	95.4	91.5	94.7	93.9	92.0	92.2	

All numbers rounded individually.
 Source: Business Demography Dataset, ONS
 Presented by: Strategic Commissioning - Analytics, Kent County Council

Chart 5 summarises 1-year survival rates for Great Britain, the South East and Kent. It shows that while survival rates have fallen over the previous two years, Kent has seen a smaller increase in new enterprises still trading after their first year than the South East and Great Britain.

Chart 5: 1 year survival rates in Great Britain, the South East and Kent

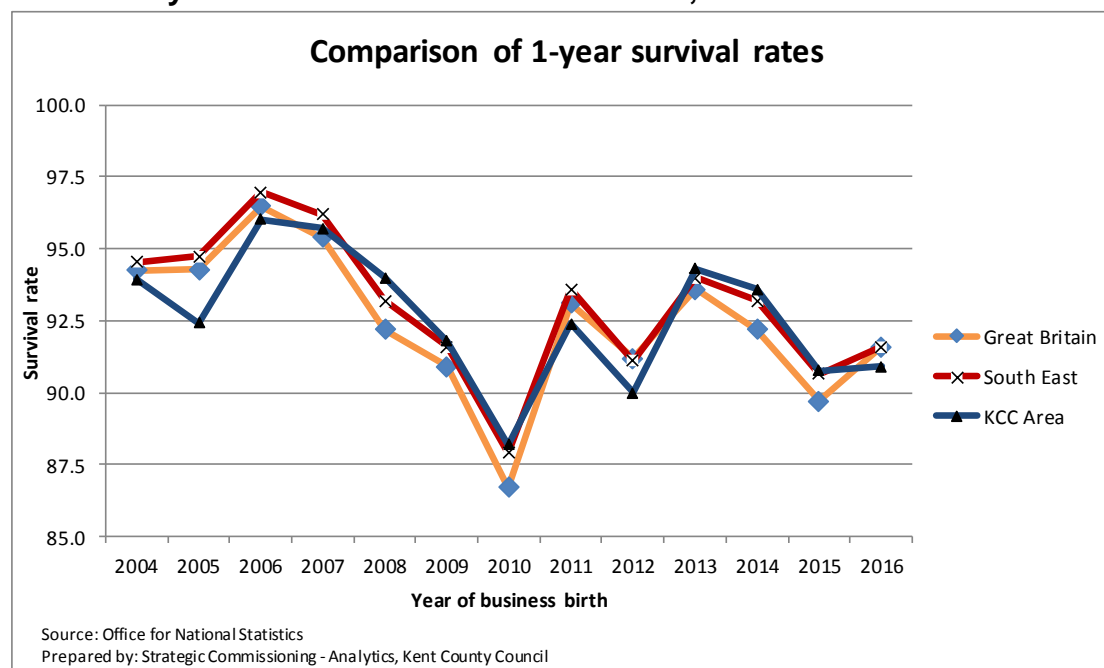
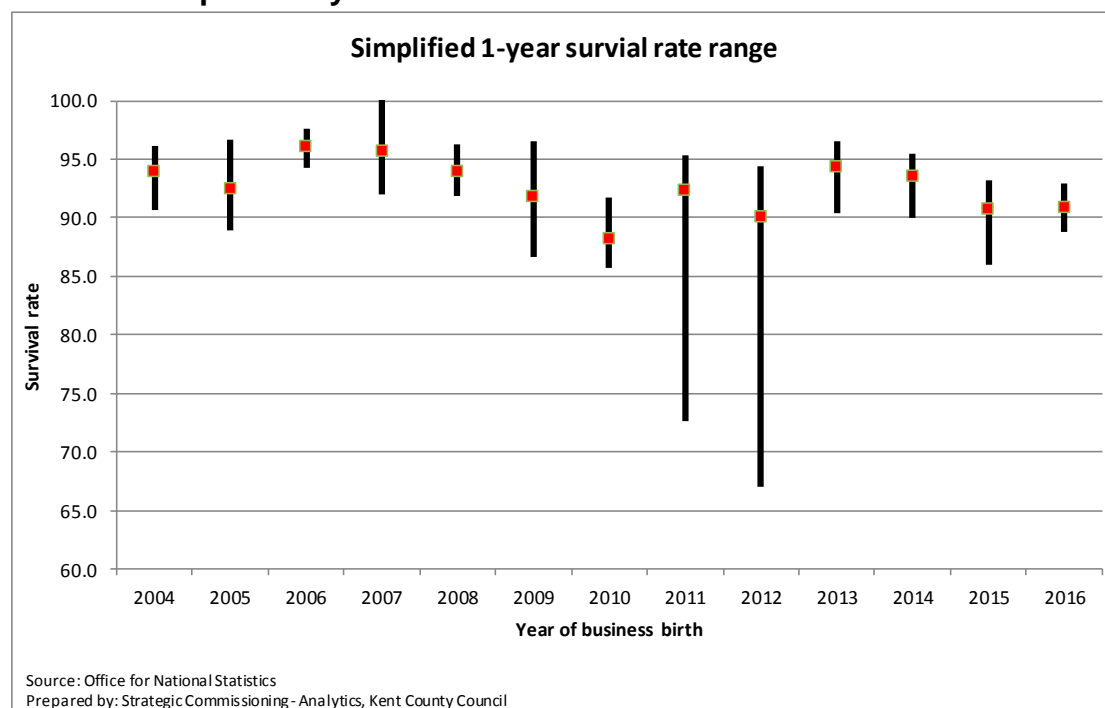


Chart 6 shows the range of one year survival rates in Kent. The chart shows that normally one year survival rates within Kent do not differ greatly between the highest and lowest survival rates. During 2011 and 2012 one year survival rates ranged anywhere between 67.0% and 95.3%. From 2013 they have settled somewhat. Over the last year the proportion of enterprises that survived their first year of trading increased slightly and the one year survival rates in Kent now range between 93.0% and 88.8%.

Chart 6: Simplified 1 year survival rates



Three year survival rates

Three year survival rates for businesses in Kent are presented in chart 7.

At 63.3% three year business survival rates in Kent are above the national rate (61.3%) but below the regional rate (63.6%).

The number of Kent enterprises surviving three years following their birth fell continuously between 2009 and 2013. In 2016 the 3 year survival rate began to improve and in 2017 reached its highest level for seven years.

Chart 7: 3 year business survival rates in Kent

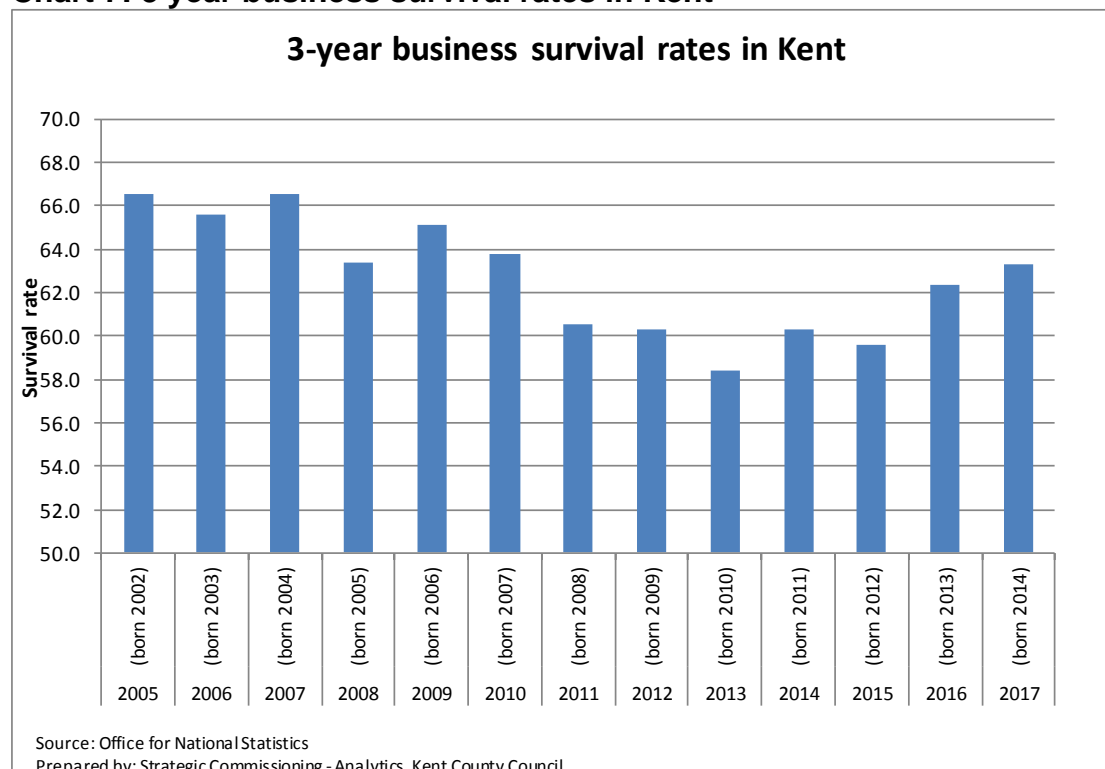


Table 8 looks at three-year survival rates for businesses formed in each year 2002 to 2014, to show how the level of three-year survivors has changed over time.

Table 8: Three year survival rates of newly born enterprises

	2005 (born 2002) 3 Year per cent	2006 (born 2003) 3 Year per cent	2007 (born 2004) 3 Year per cent	2008 (born 2005) 3 Year per cent	2009 (born 2006) 3 Year per cent	2010 (born 2007) 3 Year per cent	2011 (born 2008) 3 Year per cent	2012 (born 2009) 3 Year per cent	2013 (born 2010) 3 Year per cent	2014 (born 2011) 3 Year per cent	2015 (born 2012) 3 Year per cent	2016 (born 2013) 3 Year per cent	2017 (born 2014) 3 Year per cent
UNITED KINGDOM	62.9	63.6	65.3	64.7	66.2	63.0	58.0	59.6	57.1	60.5	59.4	60.8	61.2
GREAT BRITAIN	62.8	63.5	65.2	64.6	66.1	63.0	58.2	59.7	57.1	60.5	59.4	60.9	61.3
ENGLAND AND WALES	62.7	63.5	65.3	64.6	66.1	62.9	58.0	59.7	57.1	60.4	59.2	60.8	61.3
ENGLAND	62.7	63.5	65.2	64.6	66.2	62.9	57.9	59.7	57.1	60.4	59.2	60.8	61.4
SOUTH EAST GOR	66.1	66.3	66.9	67.4	68.8	66.1	61.4	61.9	59.5	62.4	61.1	63.2	63.6
Kent County	66.5	65.6	66.6	63.4	65.1	63.8	60.5	60.3	58.4	60.3	59.6	62.4	63.3
Ashford	64.3	65.1	70.9	62.2	68.0	74.0	57.0	63.1	56.9	59.5	58.4	61.0	63.6
Canterbury	65.4	64.5	68.3	62.2	64.1	59.5	64.2	58.7	56.3	61.9	62.6	60.1	60.0
Dartford	66.7	63.8	64.8	60.2	63.8	60.7	59.7	54.7	49.4	62.8	62.5	59.5	63.5
Dover	60.3	63.5	61.0	61.7	61.8	60.9	59.1	63.8	53.8	55.1	55.9	59.1	61.7
Gravesham	62.9	62.5	63.3	60.8	59.2	65.4	60.0	60.6	56.7	61.7	61.2	58.9	65.2
Maidstone	66.3	68.0	68.0	64.0	67.0	62.4	62.4	65.6	61.7	63.1	62.5	65.3	64.7
Sevenoaks	67.5	66.2	67.8	67.3	70.3	64.8	59.7	64.3	63.9	62.1	61.9	64.7	64.6
Folkestone & Hythe	65.5	62.0	60.7	60.4	61.4	58.8	55.7	52.0	56.7	46.6	42.5	59.6	58.9
Swale	69.3	67.7	67.3	61.3	57.7	60.5	55.3	57.3	62.8	61.1	61.8	67.0	67.0
Thanet	57.8	58.9	59.8	61.9	63.4	60.4	59.5	54.2	54.5	58.8	59.0	59.8	61.0
Tonbridge and Malling	67.0	69.8	69.5	66.4	70.4	67.4	65.0	59.0	60.2	63.6	60.6	62.2	65.0
Tunbridge Wells	74.3	69.0	69.4	68.0	68.6	65.2	63.7	64.1	60	62.4	63.4	66.3	62.0
Medway UA	64.0	67.0	62.9	62.5	66.3	61.6	56.7	61.5	61.7	60.6	58.0	61.3	61.0

All numbers rounded individually.
Source: Business Demography Dataset, ONS
Presented by: Strategic Commissioning - Analytics, Kent County Council

Chart 8 summarises 3-year survival rates for Great Britain, the South East and Kent.

Chart 8: 3 year survival rates in Great Britain, the South East and Kent

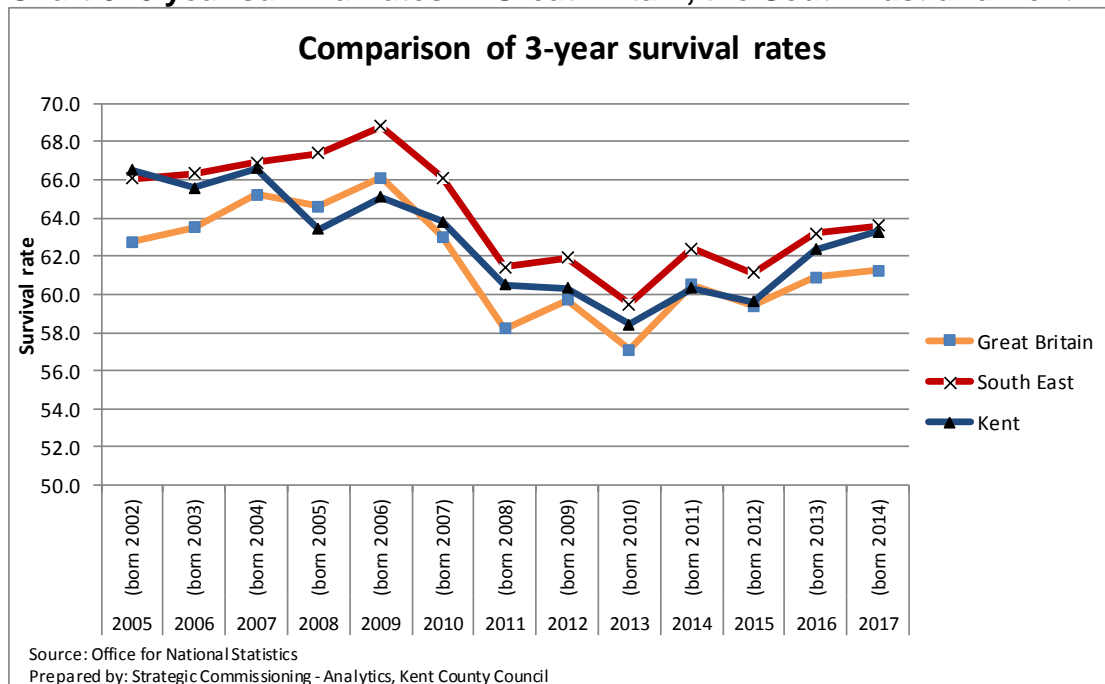
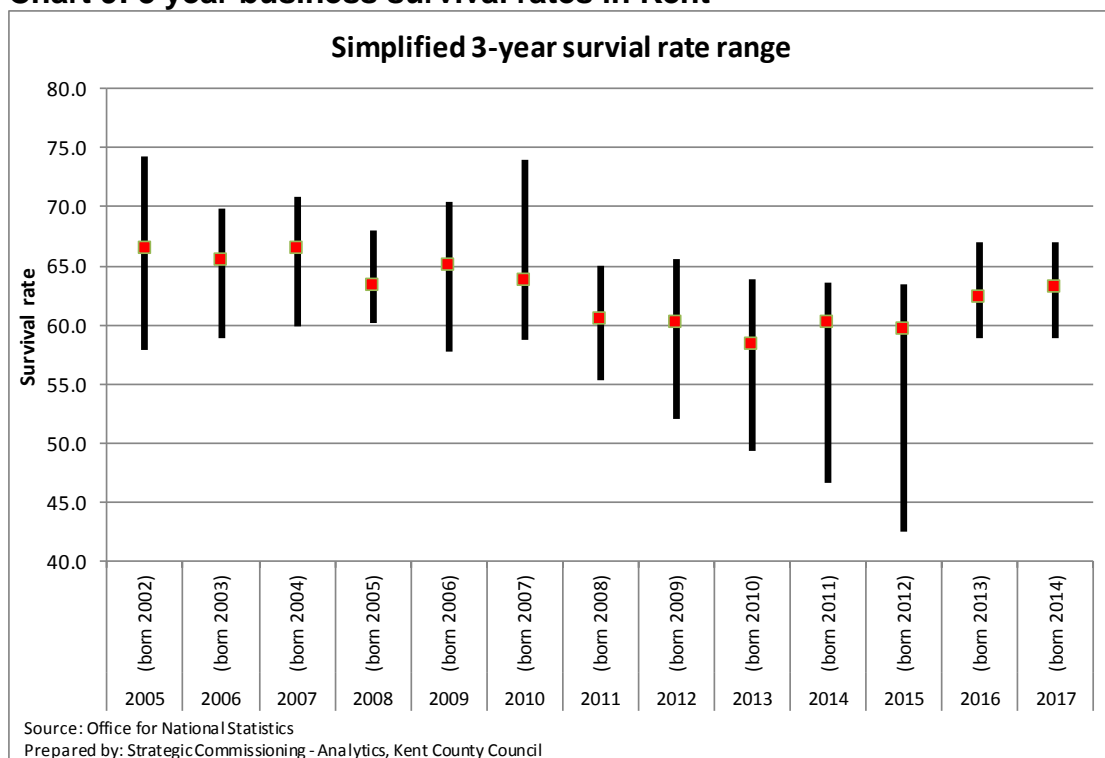


Chart 9 shows the range of three year survival rates in Kent. Generally, three year survival rates within Kent do not differ greatly between the highest and lowest survival rates. Rates have increased over the last two years in Kent although they have yet to return to their pre-recession levels.

Chart 9: 3 year business survival rates in Kent



The following tables present the 1,2,3,4 and 5 year survival rates for businesses born between 2012 and 2016.

Table 9: Survival rates of enterprises born in 2012

	Births	1 Year Survival	1 Year per cent	2 Year Survival	2 Year per cent	3 Year Survival	3 Year per cent	4 Year Survival	4 Year per cent	5 Year Survival	5 Year per cent
UNITED KINGDOM	269,250	245,825	91.3	199,065	73.9	160,005	59.4	135,775	50.4	116,285	43.2
GREAT BRITAIN	265,315	242,270	91.3	196,355	74.0	157,770	59.5	133,785	50.4	114,525	43.2
ENGLAND AND WALES	247,930	226,315	91.3	183,155	73.9	146,990	59.3	124,730	50.3	106,935	43.1
ENGLAND	239,660	218,685	91.2	176,950	73.8	141,995	59.2	120,485	50.3	103,300	43.1
SOUTH EAST GOR	41,245	37,575	91.1	30,890	74.9	25,205	61.1	21,475	52.1	18,475	44.8
Kent County	6,325	5,690	90.0	4,630	73.2	3,770	59.6	3,230	51.1	2,750	43.5
Ashford	565	510	90.3	405	71.7	330	58.4	275	48.7	245	43.4
Canterbury	535	505	94.4	400	74.8	335	62.6	290	54.2	240	44.9
Dartford	480	440	91.7	375	78.1	300	62.5	265	55.2	225	46.9
Dover	340	315	92.6	245	72.1	190	55.9	155	45.6	135	39.7
Gravesham	425	390	91.8	315	74.1	260	61.2	225	52.9	190	44.7
Maidstone	760	705	92.8	590	77.6	475	62.5	410	53.9	345	45.4
Sevenoaks	695	640	92.1	530	76.3	430	61.9	370	53.2	315	45.3
Folkestone & Hythe	530	355	67.0	285	53.8	225	42.5	185	34.9	160	30.2
Swale	445	410	92.1	340	76.4	275	61.8	225	50.6	195	43.8
Thanet	390	365	93.6	285	73.1	230	59.0	205	52.6	175	44.9
Tonbridge and Malling	545	500	91.7	400	73.4	330	60.6	285	52.3	245	45.0
Tunbridge Wells	615	555	90.2	460	74.8	390	63.4	340	55.3	280	45.5
Medway UA	940	860	91.5	700	74.5	545	58.0	475	50.5	410	43.6

All numbers rounded individually.

Source: Business Demography Dataset, ONS

Presented by: Strategic Commissioning - Analytics, Kent County Council

Table 10: Survival rates of enterprises born in 2013

	Births	1 Year Survival	1 Year per cent	2 Year Survival	2 Year per cent	3 Year Survival	3 Year per cent	4 Year Survival	4 Year per cent	5 Year Survival	5 Year per cent
UNITED KINGDOM	346,275	323,810	93.5	259,995	75.1	210,805	60.9	177,245	51.19	:	:
GREAT BRITAIN	341,420	319,615	93.6	256,740	75.2	208,055	60.9	174,845	51.21	:	:
ENGLAND AND WALES	319,885	299,365	93.6	240,230	75.1	194,675	60.9	163,790	51.20	:	:
ENGLAND	308,565	288,765	93.6	231,765	75.1	187,815	60.9	158,060	51.22	:	:
SOUTH EAST GOR	50,895	47,835	94.0	39,150	76.9	32,165	63.2	27,185	53.4	:	:
Kent County	7,745	7,305	94.3	5,980	77.2	4,830	62.4	4,100	52.9	:	:
Ashford	705	660	93.6	525	74.5	430	61.0	385	54.6	:	:
Canterbury	690	655	94.9	525	76.1	415	60.1	345	50.0	:	:
Dartford	605	575	95.0	465	76.9	360	59.5	315	52.1	:	:
Dover	440	425	96.6	335	76.1	260	59.1	225	51.1	:	:
Gravesham	535	510	95.3	410	76.6	315	58.9	260	48.6	:	:
Maidstone	880	835	94.9	685	77.8	575	65.3	475	54.0	:	:
Sevenoaks	850	785	92.4	680	80.0	550	64.7	460	54.1	:	:
Folkestone & Hythe	470	425	90.4	345	73.4	280	59.6	245	52.1	:	:
Swale	560	540	96.4	460	82.1	375	67.0	310	55.4	:	:
Thanet	535	515	96.3	405	75.7	320	59.8	270	50.5	:	:
Tonbridge and Malling	675	630	93.3	510	75.6	420	62.2	365	54.1	:	:
Tunbridge Wells	800	750	93.8	635	79.4	530	66.3	445	55.6	:	:
Medway UA	1215	1150	94.7	925	76.1	745	61.3	620	51.0

All numbers rounded individually.

Source: Business Demography Dataset, ONS

Presented by: Strategic Commissioning - Analytics, Kent County Council

Table 11: Survival rates of enterprises born in 2014

	Births	1 Year Survival	1 Year per cent	2 Year Survival	2 Year per cent	3 Year Survival	3 Year per cent	4 Year Survival	4 Year per cent	5 Year Survival	5 Year per cent
UNITED KINGDOM	350,305	323,105	92.2	265,535	75.8	214,460	61.2
GREAT BRITAIN	345,500	318,975	92.3	262,190	75.9	211,665	61.3
ENGLAND AND WALES	324,265	299,355	92.3	246,020	75.9	198,840	61.3
ENGLAND	312,920	288,870	92.3	237,490	75.9	192,030	61.4
SOUTH EAST GOR	51,280	47,775	93.2	39,900	77.8	32,615	63.6
Kent County	7,680	7,185	93.6	5,960	77.6	4,860	63.3
Ashford	700	660	94.3	550	78.6	445	63.6
Canterbury	650	605	93.1	485	74.6	390	60.0
Dartford	630	600	95.2	500	79.4	400	63.5
Dover	405	370	91.4	295	72.8	250	61.7
Gravesham	560	535	95.5	450	80.4	365	65.2
Maidstone	920	865	94.0	730	79.3	595	64.7
Sevenoaks	735	675	91.8	570	77.6	475	64.6
Folkestone & Hythe	450	405	90.0	335	74.4	265	58.9
Swale	575	545	94.8	460	80.0	385	67.0
Thanet	525	490	93.3	395	75.2	320	61.0
Tonbridge and Malling	715	675	94.4	565	79.0	465	65.0
Tunbridge Wells	815	760	93.3	625	76.7	505	62.0
Medway UA	1,230	1,155	93.9	925	75.2	750	61.0

All numbers rounded individually.

Source: Business Demography Dataset, ONS

Presented by: Strategic Commissioning - Analytics, Kent County Council

Table 12: Survival rates of enterprises born in 2015

	Births	1 Year Survival	1 Year per cent	2 Year Survival	2 Year per cent	3 Year Survival	3 Year per cent	4 Year Survival	4 Year per cent	5 Year Survival	5 Year per cent
UNITED KINGDOM	382,755	343,520	89.7	273,040	71.3
GREAT BRITAIN	377,315	338,720	89.8	269,245	71.4
ENGLAND AND WALES	355,590	319,155	89.8	253,760	71.4
ENGLAND	344,065	308,685	89.7	245,570	71.4
SOUTH EAST GOR	55,585	50,385	90.6	40,585	73.0
Kent County	8,335	7,565	90.8	6,105	73.2
Ashford	715	630	88.1	500	69.9
Canterbury	700	645	92.1	520	74.3
Dartford	735	670	91.2	545	74.1
Dover	395	360	91.1	265	67.1
Gravesham	670	615	91.8	505	75.4
Maidstone	1,020	950	93.1	745	73.0
Sevenoaks	890	800	89.9	665	74.7
Folkestone & Hythe	500	430	86.0	355	71.0
Swale	650	600	92.3	505	77.7
Thanet	545	500	91.7	390	71.6
Tonbridge and Malling	775	685	88.4	560	72.3
Tunbridge Wells	740	680	91.9	550	74.3
Medway UA	1,370	1,260	92.0	1,010	73.7

All numbers rounded individually.

Source: Business Demography Dataset, ONS

Presented by: Strategic Commissioning - Analytics, Kent County Council

Table 13: Survival rates of enterprises born in 2016

	Births	1 Year Survival	1 Year per cent	2 Year Survival	2 Year per cent	3 Year Survival	3 Year per cent	4 Year Survival	4 Year per cent	5 Year Survival	5 Year per cent
UNITED KINGDOM	413,900	378,890	91.5
GREAT BRITAIN	407,965	373,640	91.6
ENGLAND AND WALES	385,695	353,220	91.6
ENGLAND	373,580	342,095	91.6
SOUTH EAST GOR	55,955	51,250	91.6
Kent County	8,730	7,935	90.9
Ashford	885	795	89.8
Canterbury	740	675	91.2
Dartford	740	685	92.6
Dover	465	425	91.4
Gravesham	695	635	91.4
Maidstone	965	865	89.6
Sevenoaks	815	730	89.6
Folkestone & Hythe	580	515	88.8
Swale	695	645	92.8
Thanet	595	535	89.9
Tonbridge and Malling	770	700	90.9
Tunbridge Wells	785	730	93.0
Medway UA	1,470	1,355	92.2

All numbers rounded individually.

Source: Business Demography Dataset, ONS

Presented by: Strategic Commissioning - Analytics, Kent County Council