

B.4 DA04 Ashford Rural South

Ashford Stage 1 SWMP : Summary and Actions

Drainage Area 04 Ashford Rural South

Area overview

Area (km²) 155.5

Drainage assets/systems	Type	Known Issues/problems	Responsibility
Sewer Network	Sewer (foul and surface water)	There are issues linked with Southern Water systems.	Southern Water
Watercourses	Main River	Known fluvial issues associated with the New Mill Channel, River Rother, Reading Sewer, Royal Military Canal, Newknock Channel, Highknock Sewer, Five Watering Sewer Engine Sewer, Blackman's Arm, Second Spering Sewer, Sedbrook Sewer, Royal Military Canal, Second and Third Government Drain, First Marshland Sewer and Tenterden Sewer.	Environment Agency
Watercourses, drains and ditches	Non-Main River	Known fluvial issues associated with ordinary watercourses at Luckhurst, Kenardington, the Leacon and Woodchurch Road and Rolvenden Station.	Kent County Council and Ashford Borough Council
Watercourses, drains and ditches	Non-Main River	Known fluvial issues associated with IDB Drains (possibly related to issues with Main Rivers)	Romney Marsh IDB
Watercourses, drains and ditches	Non-Main River	No specific known problems	Riparian

Flood risk

Receptor	Source	Pathway	Historic Evidence
A: Tenterden	<p>Heavy rainfall resulting in surface water run off and overloaded sewers.</p> <p>Surface water (blocked drains/ gullies)</p> <p>Fluvial</p>	<p>Ashford Road, Appledore Road, Grange Lane, Ashford Road and Marshall Land</p> <p>Sewers</p> <p>Burst Water Main</p> <p>Small areas of isolated ponding from the FMFSW (deep)</p>	<p>Four records of flooding on Ashford Road as a result of a combination of sources, hydraulic overload of sewers (2009, 2010, 2011), a burst water main (2010) and deep surface water flooding (2010).</p> <p>Six areas identified within sewer records to have issues with hydraulic overload between 2009-2012. Appledore Road has several records of flooding as a result of surface water from 2009- 2010. Ashford Road records describe flood water from a surcharged drain flooded a property. This flooding was made worse due to passing traffic.</p>
B: Small Hythe Road	<p>Heavy rainfall resulting in surface water run off</p> <p>Fluvial</p> <p>Surface water (blocked drains/ gullies)</p>	<p>Small Hythe Road</p> <p>Reading Sewer</p>	<p>Regular incidents reported along Small Hythe Road (2011 and 2012), it was also highlighted that drainage is poor, leading to surface water flood risk.</p>

Ashford Stage 1 SWMP : Summary and Actions

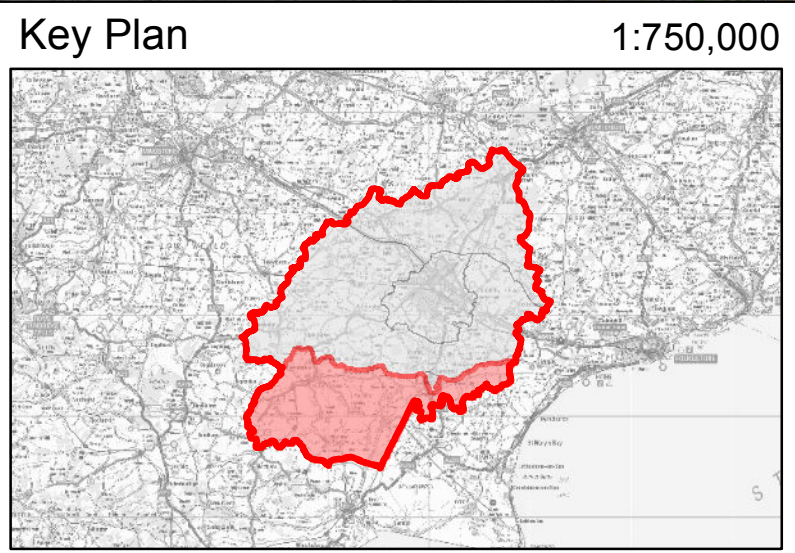
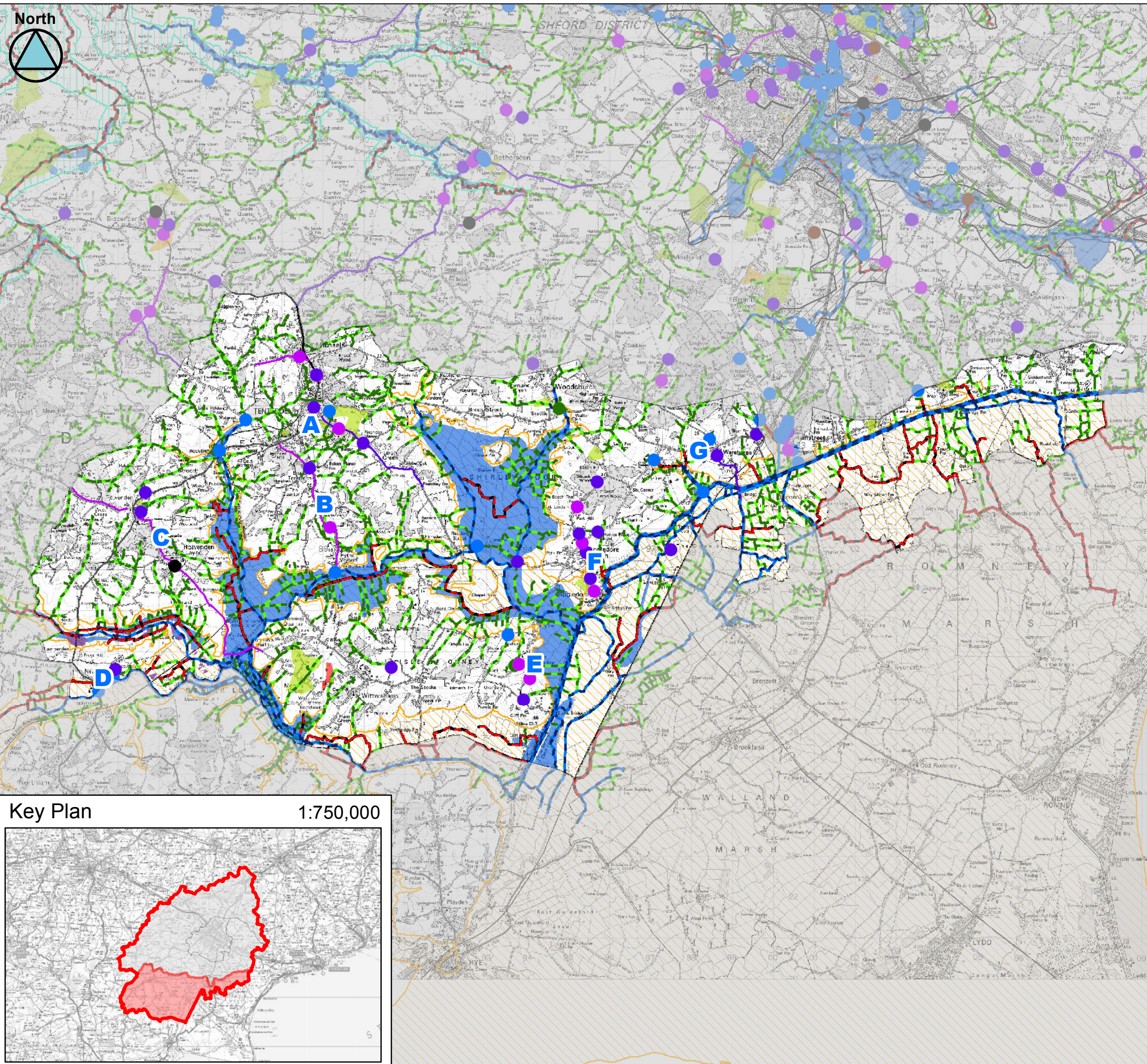
Drainage Area 04 Ashford Rural South

C: Rolvenden	<p>Heavy rainfall resulting in surface water run off and overloaded sewers</p> <p>Surface water (blocked drains/ gullies)</p> <p>Broken Water Pipe</p>	<p>Gatefield Cottages (Rolvenden), Maytham Road, Sparkeswood Close, Benenden Road</p> <p>Sewers</p> <p>FMfSW (deep) highlight small patches of isolated flooding.</p>	<p>In 2009, there was incident of sewer flooding recorded (Sparkes Wood Avenue).</p> <p>Maytham Road is identified as a drainage hotspot, in 2012, as a result of blocked gullies this road flooded. In 2008, at Gatefield Cottage in Rolvenden, sandbags were requested to prevent the inundation of water. KCC were required to clear the gullies on this road in 2012.</p>
D: Newenden	<p>Heavy rainfall resulting in surface water run off.</p> <p>Fluvial</p>	<p>Lossenham Lane (Newenden) and Rother Newen</p> <p>River Rother</p> <p>IDB Drains</p> <p>Unnamed Watercourses</p> <p>FMfSW (deep) indicate areas of ponding around the floodplain of the River Rother.</p>	<p>Reports describe Lossenham Lane has been inundated by fluvial sources (2009) and surface water run off (2008). In the 2008 event the back of a property was affected.</p> <p>The EA mapped using aerial photography places in Newenden that were perceived to be flooding by surface water, these correlate well with the FMfSW (deep).</p>
E: Stone in Oxney	<p>Heavy rainfall resulting in surface water run off.</p> <p>Fluvial</p> <p>Groundwater</p> <p>Surface water (blocked drains/ gullies)</p>	<p>Wittersham Road, Catts Hill and Church Road</p> <p>Royal Military Canal, Newknock Channel, Highknock Sewer, Reading Sewer and Five Watering Sewer</p> <p>Unnamed watercourses</p> <p>IDB Drains</p> <p>FMfSW (deep) highlight small patches of isolated flooding.</p>	<p>Catts Hill (2009) floodwater was reported to be a couple of inches deep and flowing quickly down the road. Surface water run off from higher ground was reported regularly flood the north of Wittersham Road and Top Road near Ruckinge and Bilsington.</p> <p>In Stone in Oxney a surcharged spring has caused problems in the past.</p>
F: Appledore	<p>Heavy rainfall resulting in surface water run off and overloaded sewers.</p> <p>Fluvial</p> <p>Surface water (blocked drains/ gullies)</p>	<p>Heath Road, Hornes Place, Station Road, Tenterden Road, Woodchurch Road, and The Street</p> <p>Royal Military Canal and Engine Sewer</p> <p>Sewers</p> <p>Unnamed Drain</p> <p>IDB Drain</p> <p>FMfSW (deep) follows the path of the watercourse. There are some isolated patches of flooding indicated in the area.</p>	<p>Numerous surface water related events (2008, 2009, 2010). Flows from a highway drain discharging into an ordinary watercourse in Appledore adds to flood flows in this area. It has been described that it backs up due to its condition, this has a knock on affect on drains and gullies in Appledore. Water flows under a drive of a property causing flooding. At Homes Place, it has been reported that there are existing issues with surface water/ drainage ditches and a klagester pipe. At Station Road, when the Royal Military Canal the pumping station cannot pump excess flows into the canal. At Tenterden Road, water levels were though to reach 3.5ft deep. Flooding is a regular occurrence on Woodchurch Road due to blocked drains.</p> <p>In 2009, sewer flooding was recorded as a result if hydraulic overload at The Street.</p> <p>FMfSW follow the line of the existing watercourses and their floodplain, with some isolated patches of surface water flooding indicated.</p>

Ashford Stage 1 SWMP : Summary and Actions

Drainage Area 04 Ashford Rural South

<p>G: Warehorne & Kenardington</p>	<p>Heavy rainfall resulting in surface water run off</p> <p>Fluvial</p>	<p>Hardens View (Warehorne), Marsh Road, Cock Lane, Ruckinge Road, Hamstreet Bypass and Church Road</p> <p>Horse Marsh Sewer and Royal Military Canal</p> <p>Unnamed Drain</p> <p>IDB Drain</p> <p>FMfSW (deep) indicate the Horsemarsh Sewer and its floodplain as an area at risk from surface water flooding.</p>	<p>Church Road is highlighted as a drainage hotspot and flooding at this location was due to the presence of an illegal sewer connection. This issue has since been resolved.</p> <p>The Hamstreet bypass was said to be affected by rapid run off from the embankment. The volume of water was thought to be too great for the existing KCC surface water system. In 2008, Hardens View, Warehorne records describe surface water coming from fields and affecting the under steps to a property and flooding a garden.</p>
<p>H: Other (isolated incidents within the drainage area)</p>	<p>Heavy rainfall resulting in surface water run off and overloaded sewers.</p> <p>Fluvial</p>	<p>Acton Lane</p> <p>Chapel Bank, Cradlebridge Sewer, Shirley Moor Crayfish Lagoons and Startmarsh Sewer, Rolvenden Fleet Petty Sewer, Shirley Moor Newmill Channel Rolvenden Potman's Heath Potman's Heath River Rother, Reading Sewer, Small Hythe</p> <p>IDB Drains</p> <p>Ordinary Watercourses</p> <p>Sewers</p>	<p>Numerous sewer events from 2008-2012 from hydraulic overload of foul sewers and overloaded pumping stations.</p> <p>Fluvial flood water accumulates at Cranbrook Road near Watermill Farm due to the natural topography.</p> <p>In 2010, water from the melting snow and rain was reported to flood a property on Acton Lane. Water ran down the driveway and into the property.</p>



Legend

A

B

C

D

E

F

G

Tenterden

Small Hythe Road

Rolvenden

Newenden

Stone in Oxney

Appledore

Warehorne & Kenardington

Main River

IDB Maintained Watercourse

Ordinary Watercourse

River Stour (Kent) IDB

Romney Marsh IDB

Upper Medway IDB

Historic Flooding*

Surface Water

Surface Water with blocked gullies/drains

Sewer

Groundwater

Fluvial

Other/ Unknown

Tidal

Where an entire road has been highlighted in the historic layer; this does not mean that all the road has flooded in the past but rather no specific location was identified in the records received.

Sewer Flooding Incidents **

Number of flood occurrences per postcode area

1 - 3

4 - 6

7 - 8 <

**Polygons only represent the postcode area and not the flood extent

Client:

Kent County Council

Consultant:

JBA consulting

Partners:

UPPER MEDWAY INTERNAL DRAINAGE BOARD

ROMNEY MARSH INTERNAL DRAINAGE BOARD

Environment Agency

Southern Water

ASHFORD BOROUGH COUNCIL

River Stour (Kent) Internal Drainage Board

This document is the property of Jeremy Benn Associates Ltd. It shall not be reproduced in whole or in part, nor disclosed to a third party, without the permission of Jeremy Benn Associates Ltd.

This map is based upon Ordnance Survey material with the permission of Ordnance Survey on behalf of the Controller of Her Majesty's Stationery Office (C) Crown Copyright. Unauthorised reproduction infringes Crown Copyright and may lead to prosecution or civil proceedings. 100019238. 2013

Scale 1:90,000

Ashford Stage 1 SWMP

Historic Flooding

Ashford Rural South

DA04