

B.4 DA04 Dartford Rural

Thameside Stage 1 SWMP : Summary and Actions

Drainage Area 04

Area overview

Area (km²) 38

Drainage assets/systems	Type	Known Issues/problems	Responsibility
Sewer Network	Sewers (combined, foul and surface water)	Known problems of overloaded sewers at numerous locations across the drainage area	Thameswater
River Darent	Main river	There are no known issues	KCC/ DBC
Unnamed Drain	Ordinary watercourse	There are no known issues	Environment Agency

Flood risk

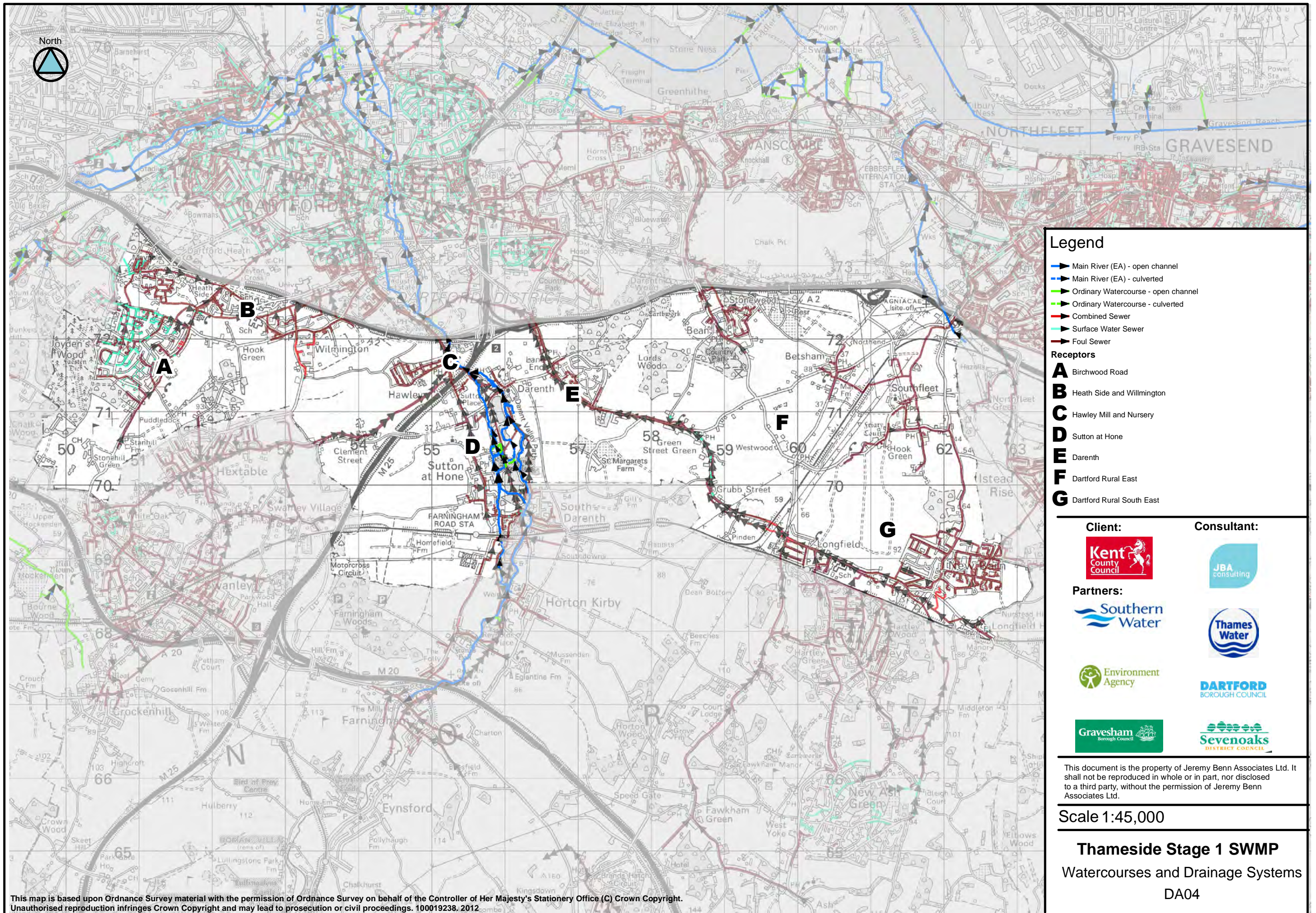
Receptor	Source	Pathway	Historic Evidence
A: Birchwood Road	Heavy rainfall resulting in surface water runoff and overloaded sewers Blocked drains and gullies	Thameswater sewers Localised ponding in low lying areas particularly along Birchwood Road Overland flow route indicated by the FMfSW Surface water flows in a north east direction with Hook Green Lane a possible barrier to flows.	Incidents of past flooding caused by blocked drains and overloaded sewers FMfSW 1 in 200 yr (deep)
B: Heath Side and Wilmington	Heavy rainfall resulting in surface water runoff and overloaded sewers	Thameswater sewers Overland flow route indicated by the FMfSW Surface water flows in an easterly direction Localised ponding across Wilmington and Heath Side	There are records of hydraulic overload from sewers causing external flooding FMfSW 1 in 200 yr (deep)
C: Hawley Mill and Nursery	Heavy rainfall resulting in surface water runoff and overloaded sewers	Thameswater sewers Overland flow route indicated by the FMfSW surface water flows in a north east direction Channel flow along River Darent in north west direction	FMfSW 1 in 200 yr (deep) There are records of hydraulic overload from sewers causing external flooding Historic evidence from Kent County Council of runoff affecting carriageways
D: Sutton at Hone	Heavy rainfall resulting in surface water runoff and overloaded sewers	Thameswater sewers Overland flow route indicated by the FMfSW surface water flows in a north east direction Localised ponding in Sutton at Hone predominately in low lying areas	There are records of hydraulic overload from sewers causing external flooding FMfSW 1 in 200 yr (deep)
E: Darent	Heavy rainfall resulting in surface water runoff and overloaded sewers	Thameswater sewers Overland flow route indicated by FMfSW surface water flows in a north west direction Localised ponding in low lying areas	Historic evidence form Kent Council of runoff affecting carriageways There are records of hydraulic overload from sewers causing internal and external flooding FMfSW 1 in 200 yr (deep)

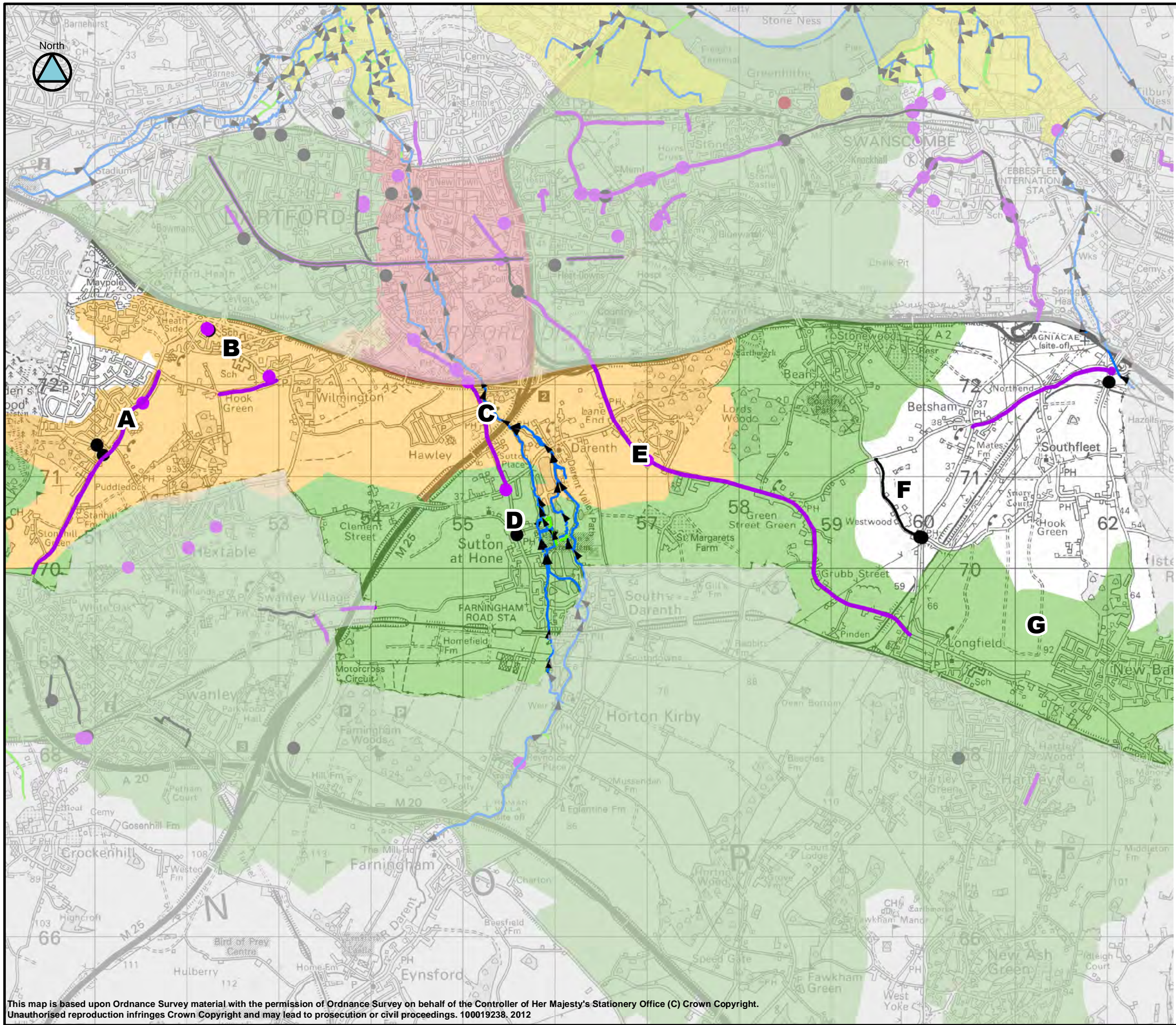
F: Green Street Green Road	Heavy rainfall resulting in surface water runoff and overloaded sewers	Thameswater sewers Overland flow route indicated by FMfSW surface water flows from south east to north along Green Street Green Road	Historic evidence from Kent Council of runoff affecting carriageways FMfSW 1 in 200 yr (deep)
G: Whitehill	Heavy rainfall resulting in surface water runoff and overloaded sewers	Thameswater sewers Overland flow route indicated by FMfSW surface water flows north along Fawkham Road and north west along B260. Also flows along Hartley Road in a northerly direction. Localised ponding in low lying areas	There are records of hydraulic overload from sewers causing external flooding FMfSW 1 in 200 yr (deep)

Comparison with potential flood risk mapping

Summary of Location-specific Actions

Area of benefit	Location of action	Action	Action owner	Priority
Birchwood Road (A)	Birchwood Road	Desilt the lagoon on Birchwood Road.	KCC, TW	Quick Win
Birchwood Road (A)	Summerhouse	A CCTV study to investigate the condition of drains and gullies.	KCC	Medium term
Heath Side and Willmington (B)	Clayton Croft Road & Common Lane	Investigate the efficiency of the existing soakaways/ drainage system with a view to improving or replacing	KCC	Short term
Sutton at Hone (D)	Main road	Residents are to inform KCC highways when field is being ploughed incorrectly and surface water run off becomes an issue.	KCC and Residents	Medium term
Darenth (E)	Green Street Green Road	KCC Highways to monitor the performance of the recently installed soakaways.	KCC	Long Term
Dartford Rural East (F)	Station Road	KCC Highways are to increase the frequency of maintenance on this road	KCC	Medium term





Legend

- Main River (EA) - open channel
- Main River (EA) - culverted
- Ordinary Watercourse - open channel
- Ordinary Watercourse - culverted

- A** Birchwood Road
- B** Heath Side and Wilmington
- C** Hawley Mill and Nursery
- D** Sutton at Hone
- E** Darenth
- F** Dartford Rural East
- G** Dartford Rural South East

Historic flooding (other RMAs)*

- Other/Unknown
- Fluvial
- Groundwater
- Combined
- Surface Water
- Sewer
- Tidal

* Where an entire road has been highlighted in the historic layer; this does not mean that all the road has flooded in the past but rather no specific location was identified in the records received.

Sewer Flooding Incidents (Thames Water)**
Number of flood occurrences per postcode area

- 1 - 3
- 4 - 6
- 7 - 8<

** Polygons only represent the postcode area and not the flood extent

Client:



Consultant:



Partners:



This document is the property of Jeremy Benn Associates Ltd. It shall not be reproduced in whole or in part, nor disclosed to a third party, without the permission of Jeremy Benn Associates Ltd.

Scale 1:40,000

Thameside Stage 1 SWMP

Historical Flooding
DA04

