

Dover Fastrack Newsletter #18

Section 1 – Honeywood Parkway over A2



Image left shows Drone image above new bridge.

In August, we constructed the concrete bridge deck that forms the centre of the bridge. This layer of concrete adds structural support to the bridge beams and will lie under the tarmac surface.

In Section 1b North we have continued the construction of the embankment to its settlement point. We can now work further away from the bridge area on the earthworks and embankment construction.

In Section 1a, we have continued with the construction of the road and the surrounding drainage. The road will be tied into the existing Red Kite Road in Richmond Park.

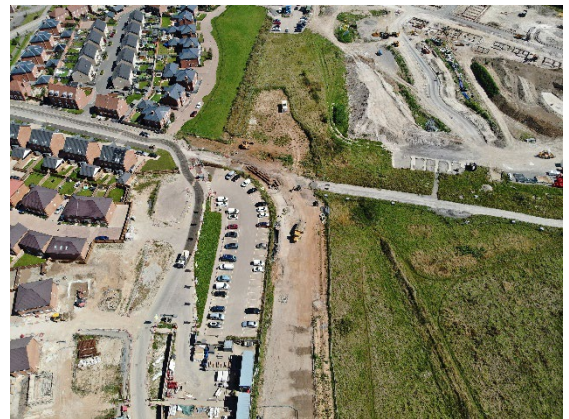


Image above shows Section 1a and Richmond Park development

In Section 1b South, work has begun to construct the road leading onto Honeywood Parkway including the construction of drainage and earthworks.

Looking Ahead

In the coming weeks, we will be pouring concrete on the bridge diaphragms to encapsulate the ends of the bridge. In section 1b North earthworks will continue further along the embankment and in 1b South we will be digging the area for the pond and installing soakaway tanks. We will also be completing the retaining walls.

In section 1a we will be installing kerbs along the road and continuing the installation of drainage.

IMPORTANT INFORMATION

Drop-In sessions:

2023

Wednesday 20 September

Wednesday 18 October

Time:

12-2pm

Location:

Colas Site Office, off B&Q Roundabout, Honeywood Parkway, CT16 3FH.

Tel: 07799 835 379

Emergency Breakdown Tel:

07974 617 256

Email:

PLODoverFT@colas.co.uk

Twitter:

[@ColasDoverFT](https://twitter.com/ColasDoverFT)

Website:

www.dover.gov.uk
www.kent.gov.uk

Report a problem at:
<https://www.kent.gov.uk/roads-and-travel/report-a-problem>

Section 2 - B&Q Roundabout to Dover Road and the Dover Road Tie-In

In August, landscaping works have begun in preparation for seeding which will commence later in September.

Section 3- Dover Road - Road Widening

The outstanding road widening will be revisited later in the year.

Traffic Management

Section 1 Tesco Roundabout to Whitfield

Narrow lanes traffic management remains in place with reduced speed limit installed on the A2 between A256 Whitfield Interchange and A256 Whitfield Roundabout both east and westbound until November 2023.

Emergency Free Breakdown Recovery is available within the narrow lane section on the A2 via a dedicated 24hr Traffic Safety and Control Officer number on **07974 617 256**.

Noise, Vibration and Dust monitoring

Vibration monitoring is set up in Section 1 North side of the A2 by Newlands and is regularly monitored by Colas. Noise monitoring is also being carried out on Dover Road and in Section 1b North by Newlands. The installation of noise, ground, and vibration plates to monitor any earth movement helps us to ensure that we are staying below limits and are causing as little impact as we can.

Useful Contacts



PLO Tel: 07799 835 379 **Emergency Breakdown Tel: 07974 617 256**



Email: PLODoverFT@colas.co.uk



Twitter: @ColasDoverFT



Website: www.dover.gov.uk www.kent.gov.uk

***Please join us at our next drop-in session at the new Colas Compound
on Honeywood Parkway off B&Q Roundabout
on the 20 September 2023 between 12-2pm***