

## Dover Fastrack Newsletter #12

### IMPORTANT INFORMATION

#### Drop-In sessions: 2023

Wednesday 22<sup>nd</sup>  
February

Wednesday 22<sup>nd</sup> March

Wednesday 19<sup>th</sup> April

#### Location:

Colas Site Office, off  
Tesco Roundabout,  
Honeywood Parkway,  
CT16 3PS.

#### Time:

12pm to 2pm

Tel: 07799 835379

Emergency  
Breakdown Tel:

07974 617256

#### Email:

PLODoverFT@colas.co.  
uk

#### Twitter:

@ColasDoverFT

#### Website:

www.dover.gov.uk  
www.kent.gov.uk



Looking across  
Section 2 - January  
2023

### Section 1 – Honeywood Parkway over A2

#### What has been happening?



Basal Reinforcement

This month in Section 1b North we have commenced the earth works, installing basal reinforcement fabric and the first stone layer that is placed underneath the embankment fill.

Installation of deep drainage up to 5m deep and filter drainage that goes at the bottom of the embankment have continued and temporary concrete access tracks to allow for the deliveries to come into site has been laid.

Finally, we have carried out tree clearance on the boundary fence line to Section 1a.



Filter Drainage

In section 1b South we have started building the bridge abutment, breaking down the concrete piles and installing the steel reinforcement so that we can install the concrete. We have also been working along the verge of the A2, backfilling the services and putting in a concrete protection slab, to improve access to site.



Reinforcement and Formwork



Protective coating added

### Looking ahead

We will continue to fill the embankment in Section 1b north, placing materials and compacting it. We will also continue constructing the drainage in and around the pond. Pre-cast concrete wall panels will be delivered to site which will be used for the north and south bridge abutments. We will also be installing the columns and reinforcement for the south bridge abutment and pouring concrete.

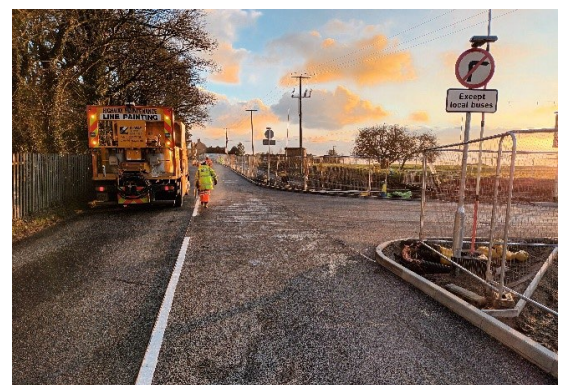
### Monitoring

We continue to monitor the vibrations caused from the plant and machinery, we also monitor the noise levels and mud/dust levels. Moving forward, monitoring of the ground settlement will be taking place when we begin the large filling operation of the embankment on the A2 North.

## Section 2 - B&Q Roundabout to Dover Road and the Dover Road Tie-In

### What has been happening?

In January, two significant milestones were reached in Section 2. The first was the completion of the new surfacing works at the end of Section 2b / Dover Road Tie-In. We also completed the last manhole, meaning that the drainage in this section is also now complete.



Completion of Tarmac at the Dover Road Tie-In

### Looking ahead

In February, the remaining footpath in Section 2b will be constructed and the tarmac binder course will be laid. The remaining High Voltage ducting will also be installed, ready to be diverted from overhead to underground, and the last layby will be constructed. We will then begin landscaping the area and install new fencing around Section 2a.



## Section 3 – Dover Road

### What has been happening?

In Section 3, SGN have begun their works to divert a gas main. The main has been moved into the centre of the road so that the road can be widened.

### Looking ahead

These utility works will continue into February.



SGN Gas Works

### Noise, Vibration, Dust monitoring

Vibration monitoring is set up in Section 1 North side of the A2 by Newlands and is regularly monitored by Colas.

Noise monitoring is also being carried out on Dover Road near the road closure and in Section 1 North by Newlands.

The installation of noise, ground, and vibration plates to monitor any earth movement helps us to ensure that we are staying below limits and are causing as little impact as we can.

### Social Value

In January, we returned to Green Park Primary school to provide a STEM based workshop, teaching KS2 students about underground services. We also visited St Mary's Primary to deliver our Be Safe, Be Seen assembly.

On the 27<sup>th</sup> of January we partnered with the Dover District Council in their new Community Roots Van to help young people riding on bikes and scooters without visibility lights. Our aim was to help the community wardens and social workers to educate these young people about the dangers that they were placing themselves in and Colas also provided bike lights and spoke reflectors to give to the young people.



Dover District Council

FEBRUARY 2023

## Traffic Management

### Section 1 Tesco Roundabout to Whitfield

Narrow lanes traffic management remains in place with reduced speed limit installed on the A2 between A256 Whitfield Interchange and A256 Whitfield Roundabout both east and westbound until June 2023.

Emergency Free Breakdown Recovery is available within the narrow lane section on the A2 via a dedicated 24hr Traffic Safety and Control Officer number on **07974 617256**.

We have completed vegetation clearance and tree cutting either side of the Colas site entrance to improve visibility and site lines.

SGN Works along Dover Road between Old Charlton Road to Burgoyne Heights is progressing well with a signed diversion in place. These works started week commencing 23 January 2023 for a period of up to 8 weeks.

***Please join us on the 22 February 2023 between 12 noon and 2pm at our next drop-in session at the Colas Compound on Honeywood Parkway***

## Useful Contacts



**PLO Tel:** 07799 835379 **Emergency Breakdown Tel:** 07974 617256



**Email:** [PLODoverFT@colas.co.uk](mailto:PLODoverFT@colas.co.uk)



**Twitter:** @ColasDoverFT



**Website:** [www.dover.gov.uk](http://www.dover.gov.uk) [www.kent.gov.uk](http://www.kent.gov.uk)

**Report a problem on the Road :** <https://www.kent.gov.uk/roads-and-travel/report-a-problem>