

# MANOR PARK COUNTRY PARK MANAGEMENT PLAN 2023-2028

Kent Country Parks



January 2025 UPDATE– Mark Gracey - RANGER SERVICES MANAGER- NORTH AND WEST KENT  
RANGER TEAM

# Contents

<b>1</b>	<b>BACKGROUND INFORMATION .....</b>	<b>5</b>
1.1	Location and site description.....	5
1.2	Contact details.....	5
1.3	Directions to site.....	6
1.4	Map coverage.....	6
1.5	Photographic Coverage .....	6
<b>2</b>	<b>Management of the site.....</b>	<b>7</b>
<b>3</b>	<b>Wider Policies and Strategies affecting the site.....</b>	<b>8</b>
3.1	Introduction .....	8
3.2	Statutory designations .....	8
3.3	Tree Preservation orders.....	8
3.4	Conservation area .....	8
3.5	Non-statutory Designations or significant details .....	8
3.6	Green Flag award .....	9
3.7	Biodiversity Action Plans.....	9
3.8	Archaeology .....	9
3.9	Kent County Council Internal policies and strategies .....	9
<b>4</b>	<b>VISION AND AIMS FOR THE SITE .....</b>	<b>11</b>
4.1	General vision.....	11
4.2	General aims.....	11
4.3	Conservation management objectives .....	11
4.4	Visitor services objectives.....	12
<b>5</b>	<b>CONSERVATION MANAGEMENT .....</b>	<b>13</b>
5.1	Physical.....	13
5.2	Hydrology .....	14
5.3	Habitats and vegetation communities.....	15
5.3.1	<i>Woodland, Scrub and Important Trees .....</i>	<i>17</i>
5.3.2	<i>Grassland.....</i>	<i>20</i>
5.3.3	<i>Vegetation of the Artificial Lake and associated watercourses.....</i>	<i>23</i>
5.4	Flora .....	24
5.4.1	<i>Vascular plants .....</i>	<i>24</i>
5.4.2	<i>Bryophytes and Lichens.....</i>	<i>25</i>
5.4.3	<i>Fungi.....</i>	<i>25</i>

5.4.4	<i>Veteran trees</i> .....	25
5.5	<b>Fauna</b> .....	25
5.5.2	<i>Mammals</i> .....	25
5.5.3	<i>Bats</i> .....	26
5.5.4	<i>Other Mammals</i> .....	26
5.5.5	<i>Herpetofauna</i> .....	27
5.5.6	<i>Birds</i> .....	27
5.5.7	<i>Invertebrates</i> .....	28
5.5.7	<i>Lepidoptera</i> .....	30
5.5.8	<i>Odonata</i> .....	30
<b>6</b>	<b>Past land use</b> .....	<b>30</b>
<b>7</b>	<b>Management Objectives</b> .....	<b>32</b>
7.1	<i>Conservation management and prescriptions</i> .....	32
7.1.2	<i>Grassland</i> .....	34
7.2	<i>Woodlands</i> .....	40
7.3	<i>The artificial lake</i> .....	45
7.4	<i>Amenity and Recreational Areas</i> .....	48
7.5	<i>Additional notes on hedgerows and scrub</i> .....	50
<b>8</b>	<b>HERITAGE MANAGEMENT</b> .....	<b>51</b>
<b>9</b>	<b>VISITOR MANAGEMENT</b> .....	<b>53</b>
<b>10</b>	<b>Environmental management</b> .....	<b>58</b>
<b>11</b>	<b>Health and safety</b> .....	<b>59</b>
11.1.1	Health, safety and security .....	59
11.2	Standard practices .....	61
11.3	Risk assessments and staff training .....	61
11.4	Fire Plan .....	62
11.5	Tree inspections .....	62
<b>12</b>	<b>Site maintenance</b> .....	<b>63</b>
12.1	Maintenance of Equipment and site furniture .....	63
12.1.1	<i>The Daily Checks</i> .....	63
12.1.2	<i>Weekly Checks</i> .....	63
12.1.3	<i>Monthly Checks</i> .....	63
12.1.4	<i>Annual Checks</i> .....	64
12.1.5	<i>Other Checks (Depending on Season)</i> .....	64
12.1.6	<i>Other Checks including litter and vandalism</i> .....	65

12.1.7	<i>Buildings Maintenance</i> .....	65
12.1.8	<i>Brand guidelines</i> .....	65
12.1.9	<i>Site equipment and furniture</i> .....	65
<b>13</b>	<b>COMMUNITY INVOLVEMENT</b> .....	<b>66</b>
<b>14</b>	<b>FINANCIAL OVERVIEW</b> .....	<b>67</b>
<b>15</b>	<b>THREATS AND OPPORTUNITIES</b> .....	<b>68</b>
<b>16</b>	<b>References and Bibliography</b> .....	<b>69</b>
<b>17</b>	<b>Appendix</b> .....	<b>72</b>
9.2	Plain Text English Format (Accessible Alternative).....	129

# 1 BACKGROUND INFORMATION

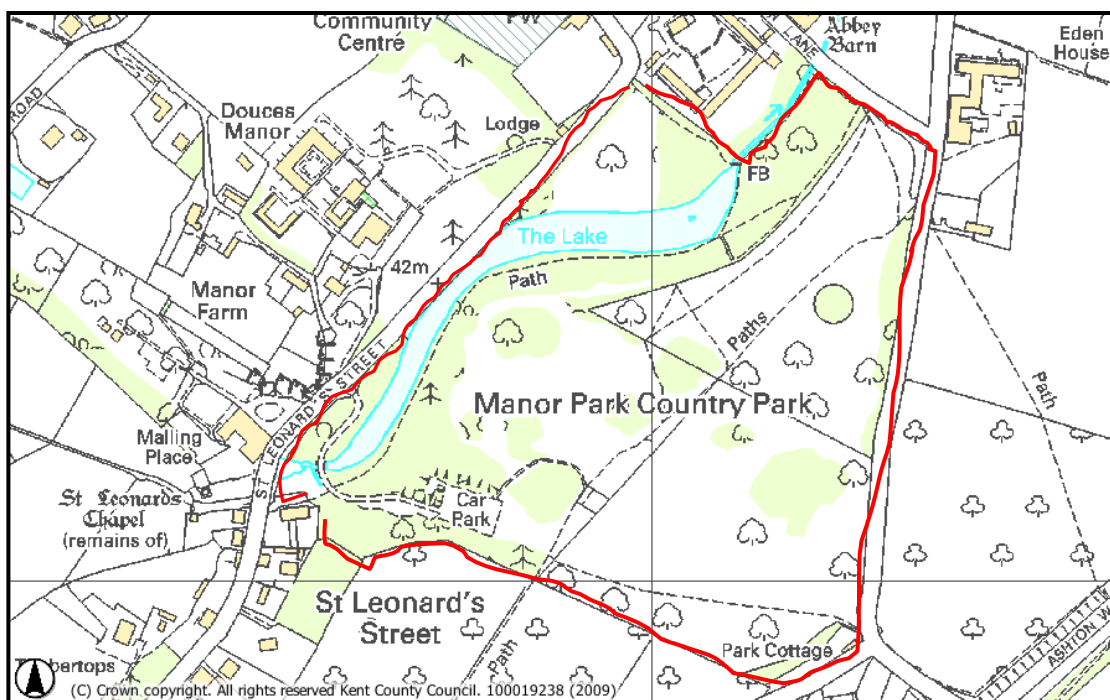
## 1.1 Location and site description

Manor Park Country Park (OS Grid Reference TQ 677 572) is in the Civil Parish of West Malling and falls under Tonbridge and Malling District Council. Manor Park Country Park occupies approximately 20 ha, which includes woodland, scrub, rough pasture and amenity turf, and an artificial lake. The artificial lake in *Compartment 2i* occupies 1.3 ha; it is approximately 480 m long and 30 m wide.

The site was once part of an 18th century estate, created by Thomas Douce. It is owned and managed by Kent County Council and was purchased during the 1970s. It has been open to the public since 1976 as a country park.

There are a wide variety of habitats to enjoy ranging from grazed wildflower meadows, a large lake with a variety of bird life, woodland copses and veteran trees.

Figure 1 – Map of site (Kent County Council (2009) approximate site boundary shown in red)



## 1.2 Contact details

Address: Manor Park Country Park, St Leonards Street, West Malling, ME19 6PE

Postal address: Shorne Woods Country Park, Brewers Road, Shorne, DA12 3HX

Telephone number: 03000 414747 (Shorne Woods Country Park)

### 1.3 Directions to site

The site is signposted from both the West Malling and Kings Hill directions on St Leonards Street, accessible from both the A26 and A28. Pedestrian access is signposted from West Malling High Street. The nearest railway station is West Malling, approximately 0.5 miles away.

### 1.4 Map coverage

The following Ordnance Survey maps cover Manor Park Country Park:

- Landranger sheet No. 188, scale 1: 50,000
- Explorer sheet No. 148, scale 1: 25,000

The site is shown on the 1872 1<sup>st</sup> Edition OS Map.

### 1.5 Photographic Coverage

General views of Manor Park Country Park are available and held by Kent County Council. Aerial photos from 1946, 1990 and 2008 are available.

Figure 2- An aerial photo showing most of the site and its proximity to West Malling





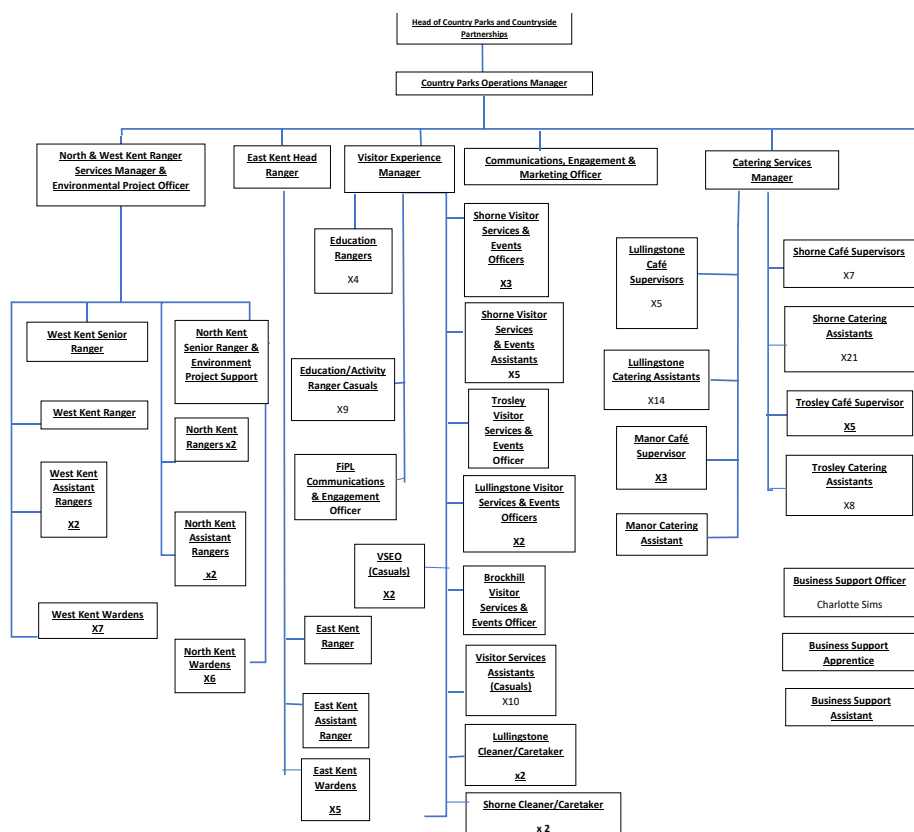
## 2 Management of the site

Manor Park Country Park is owned and managed by Kent County Council and was purchased during the 1970s. It has been open to the public since 1976.

There are 9 country parks that are owned and managed by Kent County Council, covering over 600 hectares of land. They are managed to increase public interest in, and understanding of, nature conservation, and for recreational enjoyment.

This management plan will run from January 2023 until July 2028. The management plan is reviewed and updated annually by the Ranger Services Manager as part of the Green Flag process. Most of the management work outlined in this Management Plan will be undertaken by KCC staff and volunteers, who own a range of equipment for general estate maintenance.

The Ranger Services Manager manages two part-time wardens who work 21 hours per week on site cleaning, litter picking, enforcing site rules and carrying out health and safety inspections and a team of 7 full time rangers who carry out more major works on site when required. The full staff structure can be seen in fig 3.



## 3 Wider Policies and Strategies affecting the site

### 3.1 Introduction

The site is currently influenced by the following designations and is mentioned in policy documents from KCC.

### 3.2 Statutory designations

Manor Park Country Park is not currently influenced by any recognised statutory designations.

### 3.3 Tree Preservation orders

All trees are subject to a Tree Preservation Order (TPO) and as such permission must be sought from the Tonbridge and Malling Borough Council Tree Officer before any felling takes place unless the works are for health and safety purposes. This order was made in 1971.

### 3.4 Conservation area

The site is located within the West Malling Conservation area. It sits within section E. All tree work proposals must be notified to Tonbridge and Malling district council.

### 3.5 Non-statutory Designations or significant details

The site is recognised as a Site of Nature Conservation Interest.

The site is a Queen Elizabeth Field in Trust.

Two main public footpaths cross the site. MR142 enters the site on the south-west boundary and meets with the car park, from here it runs along the southern edge of the site through Chestnut Paddock and meets Lavender Road. MR141 crosses through Douces Meadow and Abbey Fields, and meets Lavender Road in the north-east corner of the site. There are no permissive bridleways.



### 3.6 Green Flag award

Manor Park has achieved Green Flag status since 2010.

### 3.7 Biodiversity Action Plans

Five habitat types on the site are given priority under the Local Biodiversity Action Plan (Kent Biodiversity Action Plan 1997, (referred henceforward as KBAPSG), these are:

- woodland and scrub.
- lowland wood-pasture and historic parkland.
- neutral and marshy grassland.
- rivers and streams; and
- standing water.

### 3.8 Archaeology

The archaeological features recorded on site are not protected by law but are of note and the management plan aims to protect them from damage. A Historic Environment Assessment was produced in 2010 to ensure a permanent record of the site's history. Further details can be found in section 5.

### 3.9 Kent County Council Internal policies and strategies

The parks have their own 2023-2028 strategic plan that links into wider KCC objectives.

[https://www.kent.gov.uk/\\_data/assets/pdf\\_file/0003/148854/Kent-Country-Parks-Strategy-2023-28.pdf](https://www.kent.gov.uk/_data/assets/pdf_file/0003/148854/Kent-Country-Parks-Strategy-2023-28.pdf)

The site adheres to the [Kent County Council Environment Policy \(2015\)](#) and Kent County Council general statement of policy on health, safety, and welfare at work (October 2021).

As part of KCC the site also works within the ISO14001 quality standard.

Kent County Council has internal teams focused on climate change and monitoring KCCs climate change performance:

<https://www.kent.gov.uk/environment-waste-and-planning/climate-change/climate-emergency-statement/our-climate-emergency-performance>

There is also a carbon net zero action plan with an aim of being carbon neutral by 2030, that can be found here:

[https://www.kent.gov.uk/\\_data/assets/pdf\\_file/0017/122291/KCC-Net-Zero-action-Plan.pdf](https://www.kent.gov.uk/_data/assets/pdf_file/0017/122291/KCC-Net-Zero-action-Plan.pdf)

The parks are part of the Kent Nature partnership <https://kentnature.org.uk/>



## 4 VISION AND AIMS FOR THE SITE

### 4.1 General vision

Manor Park Country Parks aims to provide a welcoming, safe environment for all ages and backgrounds whilst protecting, enhancing and conserving the Site of Nature Conservation Interest. The site aims to raise environmental awareness through the sustainably built café, interpretation, events and educational activities.

### 4.2 General aims

The overall vision for the country parks in Kent is for the county to be renowned for its great country parks, operating a service which meets the needs of the people of Kent and its visitors, and which is securely funded into the future.

### 4.3 Conservation management objectives

Manor Park will be managed to provide a number of features designed to protect the historic landscape of the site, enhance the site for biodiversity and increase public enjoyment of the site for recreation.

The principal objective for the Lake is to improve the condition by reducing the tree cover from the immediate banks and encouraging greater biodiversity by allowing the reed beds to spread and encouraging the growth of marginal plants on the wet margins. The south bank will be rotationally cut to encourage grasses and herbs which will improve the pond edge for invertebrates and reptiles with the north bank remaining wooded. The area of wet woodland adjacent to the pond at the Eastern end will be managed as non-intervention woodland as it is the best area for invertebrates on site.

The specimen trees will be protected as the area was historically parkland and the scattered areas of woodlands managed to enhance their biodiversity by maintaining a diversity of tree age and species and ensuring, where possible, deadwood is left on site for invertebrate habitat.

The meadows will be managed with a view to creating the best conditions for wildflowers. This will be through a grazing program and weed control. Icehouse field is subject to a specific 10-year plan for enhancing the habitat for common lizards and areas of Douce's Meadow and



Chestnut Paddock managed for slow worm habitat under a 5 year management plan. These are funded by local developments.

#### 4.4 Visitor services objectives

Public enjoyment and recreation are a key feature of the site. The site aims to attract more visitors throughout the year as opposed to just in the spring/summer. The site also aims to educate and inform the public on conservation and environmental issues whilst also promoting healthy living and wellbeing by providing circular walks and the junior Park Run each weekend.



## 5 CONSERVATION MANAGEMENT

### 5.1 Physical

The climate in Kent is moderately Continental. In comparison to the rest of the British Isles, it generally has higher summer temperatures, whilst winter temperatures tend to be slightly lower than the rest of Southern England, with the county often being subject to brief cold spells. Rainfall levels tend to be below the UK average.

The geology of Kent is composed of rocks that date from the Cretaceous and Tertiary age (140-50 million years). Manor Park lies on Lower Greensand. The Lower Greensand Beds were laid as sediments by warm shallow seas in the Cretaceous period (100 million years ago). Originally the Greensand Beds were covered in a layer of chalk but the elements eroded this process to reveal the Upper Greensand and expose the defined concentric outcrops of chalk, Upper Greensand, Gault Clay and Lower Greensand that encircle the sands and clays of the Low and High Weald.

The site is fairly flat with the lower contour height given adjacent to the Lake of 42 m above sea-level and the upper contour height of between 60-63 m above sea-level.

The National Soil Resources Institute has condensed the original soil map units on the National Soil Map down to 27 broad soil landscape classes defined in terms of the general soil conditions and the types of semi-natural vegetation with which each is associated. The simplified map units are known as Soilscales. Manor Park is covered by 2 Soilscale units; *freely draining slightly acid but base-rich soils*, on which base-rich pastures and deciduous woodland characteristically develop and *freely draining slightly acid loamy soils*, on which neutral and acid pastures and deciduous woodlands develop.

The site lies in Natural England's Wealden Greensand Natural Area. This follows the outcrop of the Upper and Lower Greensand which curves around the western end of the Wealden anticline in West Sussex, East Hampshire, and Surrey, and forms a conspicuous ridge running east to west across Surrey and Kent, terminating in coastal cliffs at Folkestone Warren.

The geology of this Natural Area includes the Upper and Lower Greensand outcrops as well as the Gault Clay, which forms a band at the foot of the North Downs.

Lowland heath is the most characteristic habitat of the Natural Area, but it also includes part of several river valleys. These support a series of wetland habitats including alluvial grazing meadows with drainage ditches, marshy grassland, reedbeds and wet woodlands. Other habitats include dry acidic grassland and parkland, and a number of large, artificial ponds that are notable for aquatic flora and invertebrates.

## 5.2 Hydrology

Manor Park Country Park lies within the catchment area for the River Medway. The Medway is the largest river basin in Kent covering an area of 1,800 km<sup>2</sup> and contains 260 km of main river. The Medway catchment contains the greatest urban development in the Kent area outside south-east London.

The Lake is fed by the Ewell stream which originates from springs under the St Leonards Tower and is also fed by the impermeable rock run off from Kingshill. The stream at this point is shallow (less than 0.1 m deep); the substrate is gravel and silt. Formerly, this stream is believed to have run a watermill. The Lake has become heavily silted with the gradually accumulation of excess silt and nutrient enrichment (exacerbated by leaf fall from overhanging trees, road run off and duck feeding). The milky colouration of the water is a naturally occurring phenomena due to the spring's chalk origins.

The lake is approximately 620 m by 30 m (ca. 2.1 ha) in size (*Compartment 2i*). The Lake and surrounding landscaped garden formed part of Douce's Manor and was designed and constructed during the 18<sup>th</sup> century.

## 5.3 Habitats and vegetation communities

Manor Park Country Park supports a range of vegetation types, comprising many plant species and providing habitat for a variety of animals, birds and invertebrates. The majority of the site is semi-improved and improved grassland in a habitat mosaic resulting from differences in management practice. Small stands of planted trees and scrub are frequently in the open areas of grassland, and there are various types of woodland around the perimeter of the site. A large man-made lake forms a prominent feature of the park, and this is bordered by marginal vegetation and woodland. Much of the woodland in Manor Park is affected by planting of exotic trees, and in addition several veteran trees are found throughout the site.

Kent Wildlife Trust (KWT) was commissioned by Kent County Council to undertake a botanical survey of Manor Park Country Park in 2003. The survey was a pre-requisite to the production of the management plan for the site. It followed National Vegetation Classification (NVC) survey methodology (Rodwell 1991, 1992, 1997). Surveys were carried out on the 29<sup>th</sup> July, 1<sup>st</sup> August and 12<sup>th</sup> September 2003, and 10<sup>th</sup> January 2004.

The descriptions and accompanying maps from that report have been used in conjunction with the brief site visit carried out in December 2005 by Carter Ecological Limited to describe the vegetation present in the site. This baseline survey has allowed the identification of key features of interest, the development of specific management objectives applying measurable attributes and will allow in the future a method to evaluate the success of prescribed management.

The following 13 NVC communities were identified:

W6 *Alnus glutinosa-Urtica dioica* woodland.

W6b *Alnus glutinosa-Urtica dioica* woodland, *Salix fragilis* sub-community. W8 *Fraxinus* W10c *Quercus robur-Pteridium aquilinum-Rubus fruticosus* woodland, *Holcus lanatus*

sub-community.

W24a *Rubus fruticosus-Holcus lanatus* underscrub, *Cirsium arvense-Cirsium vulgare*



sub-community.

MG1a *Arrhenatherum elatius* grassland, *Festuca rubra* sub-community. MG1b

*Arrhenatherum elatius* grassland, *Urtica dioica* sub-community. MG1e

*Arrhenatherum elatius* grassland, *Centaurea nigra* sub-community.

MG6b *Lolium perenne*-*Cynosurus cristatus* grassland, *Anthoxanthum odoratum* sub-community.

MG7 *Lolium perenne* leys and related grasslands, *Lolium perenne*-*Trifolium repens* leys. MG7d

*Lolium perenne* leys and related grasslands, *Lolium perenne*-*Alopecurus pratensis* grassland.

S26d *Phragmites australis*-*Urtica dioica* tall-herb fen, *Epilobium hirsutum* sub-community; and

S28b *Phalaris arundinacea* tall-herb fen, *Epilobium hirsutum*-*Urtica dioica* sub-community *excelsior*-*Acer campestre*-*Mercurialis perennis* woodland.



### 5.3.1 Woodland, Scrub and Important Trees

Four major divisions were made between the woodland types recorded from Manor Park: **W6 *Alnus glutinosa-Urtica dioica* woodland** forms a distinct stand on low-lying land at the eastern end of the artificial lake, in *Compartment 2ii*; **W8 *Fraxinus excelsior-Acer campestre-Mercurialis perennis* woodland** is predominantly found bordering the lake, in *Compartment 3iv*; **W10c *Quercus robur-Pteridium aquilinum-Rubus fruticosus* woodland, *Holcus lanatus* sub-community** is described from copses in Chestnut Paddock and Ice House Meadow in *Compartment 1iv*; and in addition to these woodland types there are stands of planted woodland which do not conform to NVC categories, in *Compartment 1iv* and *3iv*.

The wet woodland in *Compartment 2ii* has been identified as a mosaic of **W6 *Alnus glutinosa-Urtica dioica* woodland** and **W6b *Alnus glutinosa-Urtica dioica* woodland, *Salix fragilis* sub-community**. This vegetation type is typically found on eutrophic moist soils where there has been significant deposition of nutrient-rich mineral matter. The dominant tree species is generally *Alnus glutinosa* (Alder), though *Acer pseudoplatanus* (Sycamore), *Fraxinus excelsior* (Ash) and *Salix* (Willow) species may also be present. The understory of this woodland-type is generally sparse, with small amounts of *Salix cinerea* (Grey Willow), and occasional *Sambucus nigra* (Elder) where the ground is drier. The highly characteristic field-layer generally lacks the tall herbs of other wet woodland-types and is dominated by *Urtica dioica* (Common Nettle). Few other species are common in the field-layer of this woodland-type. The vernal ground flora is generally species-poor, and bryophytes are a prominent feature of the ground cover in spring.

The **W6b** sub-community is particularly common where nutrient-enrichment occurs through seasonal deposition of particulate matter, in this case from flooding of the adjacent lake (*Compartment 2i*). In this sub-community *Salix fragilis* var. *fragilis* (Crack Willow) replaces *Alnus glutinosa* (Alder) as the dominant canopy tree. The shrub-layer is relatively sparse, but the more open canopy allows greater regeneration of saplings of species such as *Acer pseudoplatanus* (Sycamore) and *Fraxinus excelsior* (Ash), and these may be numerous. Fallen branches of *Salix fragilis* var. *fragilis* (Crack Willow) are sometimes a prominent feature of the understory, these may root and re-sprout but often they add to the large amount of deadwood in the field-layer. Field-layer vegetation is species-poor and dominated by *Urtica dioica* (Common Nettle) with smaller amounts of *Galium aparine* (Cleavers). Drier areas such as banks

may support other tall herbs such as *Arrhenatherum elatius* (False Oat-grass), *Epilobium hirsutum* (Great Willowherb) and *Phalaris arundinacea* (Reed Canary-grass).

Woodland bordering the artificial lake, in *Compartment 3iv*, is highly variable in species composition, with significant influence from inter-planting. Kent Wildlife Trust (2004) identified these woods as broadly referable to **W8 *Fraxinus excelsior*-*Acer campestre*-*Mercurialis perennis* woodland**. The diagnostic woody species of this community are *Acer campestre* (Field Maple), *Corylus avellana* (Hazel) and *Fraxinus excelsior* (Ash), though these can occur in varying proportions. The canopy frequently contains much *Acer pseudoplatanus* (Sycamore) in neglected stands of this woodland on moist soils, and several other species are occasional here. The shrub-layer often contains remnants of management for coppicing such as *Corylus avellana* (Hazel), and *Crataegus monogyna* (Hawthorn) and *Ilex aquifolium* (Holly) are frequently associated with this vegetation type. A sometimes dense under-scrub of *Rubus fruticosus* agg. (Bramble) is a common component of these woodlands. The field-layer of **W8 woodland** is highly variable, but *Arum maculatum* (Lords-and-Ladies), *Hyacinthoides non-scripta* (Bluebell) and *Mercurialis perennis* (Dog's Mercury) are highly characteristic, and *Hedera helix* (Ivy) is frequent in some sub-communities. The development of this vegetation type may be relatively rapid, and some of the stands present at Manor Park may be of recent origin through colonisation of neglected ground.

Stands of woodland broadly referable to **W10c *Quercus robur*-*Pteridium aquilinum*-*Rubus fruticosus* woodland, *Holcus lanatus* sub-community** were described from *Compartments 1iv* within Chestnut Paddock and Icehouse Meadow (KWT 2004). Although the canopy of **W10 woodland** is generally dominated by *Quercus robur* (Pedunculate Oak), the precise nature of the community varies widely with past treatment and the nature of the underlying soil. The canopy commonly includes species such as *Acer pseudoplatanus* (Sycamore), *Castanea sativa* (Sweet Chestnut), *Fagus sylvatica* (Beech) and *Fraxinus excelsior* (Ash). The understory varies in species composition with *Acer campestre* (Field Maple), *Castanea sativa* (Sweet Chestnut), *Corylus avellana* (Hazel), *Crataegus monogyna* (Hawthorn), and *Sambucus nigra* (Elder) all being characteristic of the community, in particular where coppicing has taken place. The field-layer is often characterised by *Anemone nemorosa* (Wood Anemone) and *Hyacinthoides non-scripta* (Bluebell), with *Pteridium aquilinum* (Bracken) dominant in some stands.

The **W10 woodland** is characteristic of poorly drained soils such as the Eocene clays of Essex and Kent where it has often been treated as Hornbeam or Chestnut coppice. At Manor Park Country Park the dominant canopy tree in these stands is *Castanea sativa* (Sweet Chestnut),

and the field-layer is dominated by *Hedera helix* (Ivy). There is little variation between these stands, though in Icehouse Meadow there is a sparse shrub layer with *Sambucus nigra* (Elder) and there are regenerating *Acer pseudoplatanus* (Sycamore) saplings.

Woodland habitats comprising mainly planted trees are located in small stands in the open grassland areas and in linear habitats at the perimeter of the site in *Compartments 1, 2 and 3*. These woodlands do not conform to any standard NVC community type and a range of native and exotic canopy trees are present including *Acer pseudoplatanus* (Sycamore), *Aesculus hippocastanum* (Horse-chestnut), *Castanea sativa* (Sweet Chestnut), *Fagus sylvatica* (Beech), *Fraxinus excelsior* (Ash), *Pinus nigra* ssp. *laricio* (Corsican Pine), *Populus tremula* (Aspen), *Quercus robur* (Pedunculate Oak) and *Tilia xeuropaea* (Lime).

In some of the younger plantings that contain *Fagus sylvatica* (Beech) and *Prunus avium* (Wild Cherry) in the canopy, the woodland has an open feel with few shrubs. These stands typically have a sparse field-layer, which is often dominated by *Hedera helix* (Ivy) or by an under-scrub of *Rubus fruticosus* agg. (Bramble).

More mature plantings contain canopy trees such as *Acer pseudoplatanus* (Sycamore), *Aesculus hippocastanum* (Horse-chestnut), *Populus xcanescens* (Grey Poplar) and *Quercus* (Oak) species. Where these are open to grazing cattle there is little shrub or field-layer vegetation.

The unfenced stands in *Compartment 3* are a mixture of planted woodland with *Tilia* (Lime) and *Quercus* (Oak) species, and secondary woodland and scrub with *Fraxinus excelsior* (Ash) and *Ulmus procera* (English Elm) and saplings of *Acer pseudoplatanus* (Sycamore). Commonly, the shrubs *Crataegus monogyna* (Hawthorn), *Prunus spinosa* (Blackthorn) and *Sambucus nigra* (Elder) are present, along with under-scrub of *Rubus fruticosus* agg. (Bramble). This scrub is occasionally dense, and *Hedera helix* (Ivy) is a frequent component of both the shrub and field-layers. These stands are commonly associated with a border of rank grasses such as *Arrhenatherum elatius* (False Oat-grass) and *Dactylis glomerata* (Cock's-foot), with tall herbs such as *Anthriscus sylvestris* (Cow Parsley), *Heracleum sphondylium* (Hogweed) and *Urtica dioica* (Common Nettle) and this is broadly referable to **MG1b *Arrhenatherum elatius* grassland, *Urtica dioica* sub-community**.

There is scrub habitat referable to the NVC community **W24 *Rubus fruticosus*-*Holcus lanatus* underscrub** at several locations in Manor Park. This community is typically dominated by mixtures of brambles, rank grasses and tall-herbs. It develops in active successions around woodland and scrub margins and is often associated with **MG1 *Arrhenatherum elatius* grassland** where grazing or mowing regimes have been abandoned. This is seen along the fence

between *Compartments 1i* and *1ii*, where a dense mound of *Rubus fruticosus* agg. (Bramble) scrub is growing in close association with the grassland. Rank grasses are a prominent feature of this community with *Arrhenatherum elatius* (False Oat-grass), *Dactylis glomerata* (Cock's-foot), and *Holcus lanatus* (Yorkshire-fog), as well as the tall herb *Urtica dioica* (Common Nettle).

### 5.3.2 Grassland

The majority of the grassland habitat recorded from Manor Park Country Park is species-poor amenity turf and rough grassland. More species-rich rough grassland was recorded at one location in *Compartment 3iv*. Intensity of management is the main factor determining variation between the grassland types, and small-scale mosaics are related to differences in topography and soil moisture content.

The majority of the grassland in *Compartment 3i* is species-poor amenity turf, and this is also found on mown paths through *Compartment 1ii*. This grassland is likely to have been created through sowing commercially available species and is principally used as an informal recreation area and for picnicking. KWT describe this vegetation as **MG7 *Lolium perenne* leys and related grasslands, *Lolium perenne*-*Trifolium repens* leys**.

**MG7a** is characteristic of amenity grassland and or improved pastures. The community is dominated by *Lolium perenne* (Perennial Rye-grass), which has been developed for its resistance to heavy use and nutrient content. Broad-leaved herbs are relatively rare, but include the common grassland forbs *Trifolium repens* (White Clover) and *Trifolium pratense* (Red Clover).

The vegetation in *Compartments 1i* and *1ii* is less intensively managed than the amenity turf in *Compartment 3i*, and as such it has a much taller sward with a greater abundance of broad-leaved herbs. This vegetation has been described by KWT (2004) as a mosaic of **MG7d *Lolium perenne* leys and related grasslands, *Lolium perenne*-*Alopecurus pratensis* grassland** and **MG6b *Lolium perenne*-*Cynosurus cristatus* grassland, *Anthoxanthum odoratum* sub-community**.

The **MG7d** grassland generally has a tall sward where *Alopecurus pratensis* (Meadow Foxtail) and *Lolium perenne* (Perennial Rye-grass) are co-dominant, and a moderate diversity of broad-leaved herbs. These commonly include *Cerastium fontanum* (Common Mouse-ear), *Ranunculus*



*repens* (Creeping Buttercup), *Rumex acetosa* (Common Sorrel), and *Taraxacum* sect. *Ruderalia* (Common Dandelion). This community is frequent where soil moisture and fertility are relatively high.

**MG6 *Lolium perenne*-*Cynosurus cristatus* grasslands** have a generally short, tight sward which is grass dominated. The most abundant grass is usually *Lolium perenne* (Perennial Rye- grass), with varying amounts of *Cynosurus cristatus* (Crested Dog's-tail), *Festuca rubra* (Red Fescue) and *Agrostis capillaris* (Common Bent). There might be tussock-forming grasses e.g., *Dactylis glomerata* (Cock's-foot) and *Holcus lanatus* (Yorkshire-fog), but they generally have a patchy distribution. The range of dicotyledons that the community supports is rather limited, with species such as *Achillea millefolium* (Yarrow), *Cerastium fontanum* (Common Mouse-ear), *Cirsium arvense* (Creeping Thistle), *Trifolium pratense* (Red Clover) and *Trifolium repens* (White Clover). The tall-herb *Urtica dioica* (Common Nettle) is locally prominent where there is soil eutrophication and disturbance, for example around gateways.

In the **MG6b *Lolium perenne*-*Cynosurus cristatus* grassland, *Anthoxanthum odoratum* sub-community** *Anthoxanthum odoratum* (Sweet Vernal-grass) is an additional constant to the sward along with a greater diversity of broad-leaved herbs including *Leontodon hispidus* (Rough Hawkbit) and *Rumex acetosa* (Common Sorrel).

Rough grassland habitats are frequent throughout Manor Park Country Park, at the perimeter of small copses and in open areas of woodland in *Compartment 3iv*, and in a mosaic with **W24 *Rubus fruticosus*-*Holcus lanatus* underscrub** in *Compartment 1iii*. These rough grassland habitats showed some variation in their floristic composition and diversity, and were described by KWT (2004) as **MG1 *Arrhenatherum elatius* grassland**.

The **MG1 *Arrhenatherum elatius* grassland** is predominantly a community of sites where grazing and mowing are infrequent, and it is dominated by coarse tussock-forming grasses such as *Arrhenatherum elatius* (False Oat-grass) and *Dactylis glomerata* (Cock's-foot) with smaller amounts of *Holcus lanatus* (Yorkshire-fog). Tall broad-leaved herbs (including some pernicious weeds) are common in this community and include species such as *Centaurea nigra* (Common Knapweed), *Cirsium arvense* (Creeping Thistle), *Heracleum sphondylium* (Hogweed) and *Urtica dioica* (Common Nettle). These tall herbs can be an important food source for a wide range of invertebrate species, particularly hoverflies. Scrambling herbs such as *Convolvulus arvensis* (Field Bindweed) and *Veronica chamaedrys* (Germander Speedwell) are sometimes frequent amongst the grasses.

The most species-poor of the **MG1** sub-communities is the **MG1a *Arrhenatherum elatius* grassland, *Festuca rubra* sub-community**, which was restricted to a discrete location in *Compartment 1iii*. As well as the dominant coarse grasses, *Festuca rubra* (Red Fescue) is abundant and there is a restricted range of broad-leaved herbs associated with this sub-community, notably *Achillea millefolium* (Yarrow), *Cerastium fontanum* (Common Mouse-ear) and *Rumex acetosa* (Common Sorrel). However, this sub-community is typically dominated by the grasses, and species-richness only increases with age.

The **MG1b *Arrhenatherum elatius* grassland, *Urtica dioica* sub-community** is distinguished by the prominent and constant presence of *Urtica dioica* (Common Nettle), and large umbellifers such as *Anthriscus sylvestris* (Cow Parsley) and *Heracleum sphondylium* (Hogweed) further add to the character of this sub-community. This community was a prominent feature of the vegetation of *Compartment 1ii*, in a mosaic with **W24 *Rubus fruticosus*-*Holcus lanatus* underscrub**. A distinctive feature here was the abundance of tree saplings in the grassland and scrub communities, particularly *Acer pseudoplatanus* (Sycamore) and *Castanea sativa* (Sweet Chestnut), marking the tendency of this community to succeed to scrub and woodland if mowing and grazing are absent.

The richest and most varied sub-community of the **MG1** grassland is the **MG1e *Arrhenatherum elatius* grassland, *Centaurea nigra* sub-community**, and this is described by KWT (2004) from a discrete patch of grassland in *Compartment 3iv*. The dominant coarse grasses are marginally less abundant here, and there is a greater diversity of broad-leaved herbs including *Centaurea nigra* (Common Knapweed), *Knautia arvensis* (Field Scabious), and *Leontodon hispidus* (Rough Hawkbit). Also recorded from this location is the county-scarce plant *Geranium pratense* (Meadow Crane's-bill) (KWT 2004).



### 5.3.3 Vegetation of the Artificial Lake and associated watercourses

The artificial lake in *Compartment 2i* has both moderately sloping banks and steeply sloping banks, it is fed by a small complex of shallow streams and the outlet is through a single man-made channel. No vegetation is recorded from the open water of *Compartment 2i*, but the lake margins support two distinct plant communities (KWT 2004).

The majority of the marginal vegetation is referable to **S26d *Phragmites australis-Urtica dioica* tall-herb fen, *Epilobium hirsutum* sub-community**. This occurs patchily around the margin, but is typically dominated by the tall reed *Phragmites australis* (Common Reed) with abundant *Epilobium hirsutum* (Great Willowherb). Several other tall herb species may be

abundant including *Phalaris arundinacea* (Reed Canary-grass), *Carex riparia* (Greater Pond-sedge) and *Typha latifolia* (Bulrush), and the scrambling herb *Galium aparine* (Cleavers) is the only other species that is constant in this community.

In the ***Epilobium hirsutum* sub-community**, *Epilobium hirsutum* (Great Willowherb) occurs patchily, and often remains as a prominent feature of the winter vegetation. Other herbs that occur in this sub-community include *Apium nodiflorum* (Fool's Water-cress), *Mentha aquatica* (Water Mint), *Myosotis scorpioides* (Water Forget-me-not) and *Ranunculus repens* (Creeping Buttercup).

A small patch of the vegetation at the south-western end of *Compartment 2i* is referable to **S28b *Phalaris arundinacea* tall-herb fen, *Epilobium hirsutum-Urtica dioica* sub-community**, a species-poor community dominated by *Phalaris arundinacea* (Reed Canary-grass), but with abundant *Epilobium hirsutum* (Great Willowherb) in the canopy. There are few other species, and in the *Urtica dioica* sub-community these are usually restricted to *Galium aparine* (Cleavers) and *Urtica dioica* (Common Nettle).

Both the **S26** and the **S28** communities occur frequently at the margins of fluctuating water bodies such as that in *Compartment 2i*. The species-poor sub-communities recorded from Manor Park reflect the eutrophic status of the artificial lake. The marginal vegetation here is also heavily influenced by the grazing of over-wintering wildfowl.

The network of streams feeding the lake flow through plantation woodland that has a closed canopy. The stream banks are mostly steep but low up to 50 cm high and support limited marginal vegetation dominated by *Hedera helix* (Ivy) with small amounts of *Carex*

*pendula* (Pendulous Sedge). There is limited aquatic vegetation in the watercourses, which may be partially due to heavy shading by the woodland canopy.

The outflow stream flows through an artificial channel and supports no aquatic or marginal vegetation. A bank above this watercourse supports closed canopy woodland with *Acer pseudoplatanus* (Sycamore) and *Fraxinus excelsior* (Ash) and a field-layer including *Arum maculatum* (Lords-and-Ladies) and *Hedera helix* (Ivy). The banks also support several ferns including *Dryopteris dilatata* (Broad Buckler-fern) and *Polystichum setiferum* (Soft Shield-fern).

In March 2012 45 metres of coir rolls and reed mats were planted in the lake. This contained a mix of species including Yellow Iris, Water Mint, greater and lesser reedmace and marginal aquatic plants to improve biodiversity. Water mint has spread throughout the channel and an area of reeds has survived and is flourishing. The marginal plants have taken so improved the edge habitat. In 2023 there are noticeable pockets of reed and mint along the lake edge.

The outflow had numerous leaks in 2020 and these have all been repaired.

General sightings on the lake include tufted duck, coot, moorhen, mallard, heron, egret, black headed gull and kingfisher.

## 5.4 Flora

### 5.4.1 Vascular plants

In total 122 vascular plants have been recorded from Manor Park Country Park. A full species list is given in the Kent Wildlife Trust report (KWT 2004).

Two county scarce plants were recorded by KWT. County scarce plants are recorded in less than 5% (52) of 2 km × 2 km tetrads in the atlas of the Kent flora (Philp 1982). These were:

- *Carex divulsa* ssp. *leersii* (Grey Sedge) is found in only 24 tetrads in Kent. It is recorded from three locations in Manor Park (KWT 2004), in *Compartments 1* and *3*; and
- *Geranium pratense* (Meadow Crane's-bill) is slightly more common in Kent, occurring in 39 tetrads. Several plants of this species are recorded from *Compartment 3iv* at Manor Park.

### 5.4.2 Bryophytes and Lichens

Incidental records of 14 species of bryophytes are given in the 2004 report (KWT 2004). The species of bryophytes recorded from Manor Park are all common in similar habitats, and none of them are of county importance. A full survey of the bryophyte flora has not been conducted, however, and it is possible that other important habitats such as dead wood and veteran trees may support a greater number of species.

Incidental records of 33 species of lichen are provided in the 2004 report (KWT 2004). These were recorded from a variety of habitats including ragstone walls, gates, dead wood and epiphytic on live trees. None of the species are of county importance, though a full survey was not conducted.

### 5.4.3 Fungi

During the 2004 survey 34 species of fungi were recorded, though this was not a systematic survey and records are only incidental sightings. This list included the Red Data Book species *Coriopsis gallica* recorded from the trunk of dead *Fraxinus excelsior* (Ash) tree in *Compartment 1i*. A large proportion of the fungi were recorded from dead wood, and a smaller amount was on living plants including veteran trees.

### 5.4.4 Veteran trees

A survey was carried out by the Medway Valley Countryside Partnership in 2009. This recorded 27 veteran trees using the standard Natural England survey method.

## 5.5 Fauna

### 5.5.2 Mammals

During the 2004 survey by the Kent Wildlife Trust (KWT 2004) several species of mammals were recorded. A data search for protected species records in the immediate area of the site was

undertaken using the National Biodiversity Network (NBN). Records outside a 2-km search area were excluded.

### 5.5.3 Bats

The following native bat species were recorded at Manor Park Country Park during surveys carried out between June and October in 2008

- Common Pipistrelle (*Pipistrellus pipistrellus*).
- Daubenton's Bat (*Myotis daubentoni*).
- Noctule Bat (*Nyctalus noctula*).
- Soprano Pipistrelle (*Pipistrellus pygmaeus*).

European law protects all native bats. In addition to their protection by law Brown Long-eared Bat (*Plecotus auritus*), Noctule Bat (*Nyctalus noctula*) and Soprano Pipistrelle (*Pipistrellus pygmaeus*) are listed on the UK Biodiversity Action Plan (UK BAP 2008) as 'Priority Species'. Soprano Pipistrelle (*Pipistrellus pygmaeus*) are also listed on the Kent Biodiversity Action Plan (Kent BAP 2007) along with Common Pipistrelle (*Pipistrellus pipistrellus*), which highlights their importance in a local context.

There are many veteran trees with cracks, cavities and woodpecker holes. These features all provide excellent sites for bats to roost in. The open grassland and hedge lines provide good foraging and commuting opportunities for a number of species of bat which could roost elsewhere in the area. Should a tree containing a potential bat roost be selected for felling, appropriate survey and mitigation should be undertaken under license by DEFRA.

### 5.5.4 Other Mammals

Water Shrew (*Neomys fodiens*) was recorded in the stream area below the lake by KWT (2004). The Water Shrew is listed on *Schedule 6 of The Wildlife and Countryside Act 1981*.

Rabbit (*Oryctolagus cuniculus*) and Grey Squirrel (*Sciurus carolinensis*) are known to be present at Manor Park Country Park, however Rabbit grazing and damage to trees by Grey Squirrel do not seem to be a particular problem.

### 5.5.5 Herpetofauna

Up until 2020 there are no records of reptiles from the site. The boundaries of woodland edges, scrub and rough grassland provide suitable habitat for a number of reptile species including Slow Worm, Grass Snake and Common Lizard. The wetter areas along the streams are especially suitable for Grass Snake. The common lizard and slow worm relocation projects have now introduced these species to the site in specific areas and the populations will be monitored for 5 years. 267 slow worms were reintroduced into the allocated areas of Chestnut field and Abbey field in 2021.

The verges around the car park are abundant with toads and frogs in the early spring, in particular the grass bank along the edge of the main car park and the square of tall grass at the entrance to the car park.

### 5.5.6 Birds

Incidental bird sightings have been recorded by Kent Wildlife Trust (KWT 2004) and site staff. Of the 17 species recorded, one (Kingfisher) is protected under *Schedule 1* of the *Wildlife and Countryside Act 1981*. None of the species are listed on the Red List Birds of Conservation Concern, but four species (Kingfisher, Gadwall, Green Woodpecker, and Mute Swan) are on the Amber List. Annual observations are recorded to create annual records lists. Interpretation discouraging feeding the birds bread has helped reduce the wildfowl numbers to a more sustainable number.

### 5.5.7 Invertebrates

The invertebrate interest of Manor Park Country Park is high, with 348 species recorded in a 2009 survey of the site (Clemons & Heal). No aquatic invertebrates were recorded in a 2010 survey of the pond, but the table below shows a summary of the types found in the park.

Order	Number of species	Number of records
Araneae (Spiders)	1	1
Coleoptera (Beetles)	47	74
Dermaptera (Earwigs)	1	4
Diptera (True flies)	221	318
Hemiptera (True bugs)	22	31
Hymenoptera (Ants, bees, sawflies and wasps)	27	31
Isopoda (Woodlice)	1	1
Lepidoptera (Butterflies and moths)	10	16
Mecoptera (Scorpion flies)	1	2
Neuroptera (Lacewings)	3	3
Odonata (Damselflies and dragonflies)	2	2
Orthoptera (Crickets and grasshoppers)	4	6

Two nationally rare species were found:

- *Acartophthalmus bicolor* Oldenberg (Diptera, Acartophthalmidae (Wet woodland area)
- *Blaesoxipha plumicornis* (Zetterstedt) (Diptera, Sarcophagidae (Ungrazed grassland)

Nationally scarce species included:

- *Empis woodi* Collin (Diptera, Empididae (Wet woodland)
- *Fannia clara* Collin (Diptera, Fanniidae (Wet woodland)
- *Pherbellia annulipes* (Zetterstedt) (Diptera, Sciomyzidae (Wet woodland)
- *Sarcophaga arcipes* Pandellé (ungrazed grassland)



- *Sarcophaga subulata* Pandellé (Diptera, Sarcophagidae (wet woodland)
- *Symphoromyia immaculata* (Meigen) (Diptera, Rhagionida (grazed

meadow)





### 5.5.7 Lepidoptera

No formal butterfly survey has been carried out at the park, but site staff keep incidental records of sightings. The following were recorded in recent summers (post 2020)

Group	Latin name	Common name
Lepidoptera	<i>Aglais urticae</i>	Small Tortoiseshell
Lepidoptera	<i>Celastina argiolus britanna</i>	Holly Blue
Lepidoptera	<i>Maniola jurtina</i>	Meadow Brown
Lepidoptera	<i>Pararge aegeria</i>	Speckled Wood
Lepidoptera	<i>Pieris brassicae</i>	Large White
Lepidoptera	<i>Pieris napi</i>	Green Veined White
Lepidoptera	<i>Pieris rapae</i>	Small White
Lepidoptera	<i>Polyommatus icarus</i>	Common Blue
Lepidoptera	<i>Pyronia tithomus britanniae</i>	Gatekeeper
Lepidoptera	<i>Vanessa atalanta</i>	Red Admiral
Hymenoptera	<i>Bombus lapidarius</i>	Large Red-tailed Bumblebee

### 5.5.8 Odonata

A banded Demoiselle was recorded on the lake outflow channel in July 2014. Other records included emperor and black tailed skimmers on the lake edge path.

## 6 Past land use

The site was formerly part of the landscaped grounds of Douces Manor in the 18<sup>th</sup> century. The exact date of construction of the Lake is unknown, but it is shown on the 1870-1872 OS map and was presumably built during the early to mid-1800s. It may have been stocked as a fishing lake, perhaps used by the adjacent Abbey (north of the site). The 1870-1872 OS map also shows that the area south of the Lake was one large field and that the division into three fields (Douce Meadow, Chestnut Paddock, and Abbey Fields) must have happened in more recent years.

Manor Park Country Park has been managed for nature since it was purchased in 1976. The site has been maintained for public recreation during this period.

The pastures have been grazed throughout the period. The grazing regime is monitored annually to ensure the stocking rate enhances the habitat. Cattle under a grazing license have grazed the site since Sept 2011. Cattle graze during drier months to avoid poaching the site.

During the 1950s the lake was dredged to remove leaf litter and excess silt, which reduced the nutrient status of the water. In addition, vegetation rolls have been planted along the lake edge, though only some were successful. Less successful was the planting of *Phragmites australis* (Common Reed) in 2008, which may have failed due to the water temperature or possibly by over-grazing by waterfowl. Although the lake was stocked, fishing has been banned since 2007. The 2012 planting mats have been successful at the bridge end of the lake.

The woodland has been managed by minimum intervention by site staff. The wooded bank on the southern edge of the pond has had invasive Sycamore removed and stump treated between 2008-2022. The south bank of the lake has had 90% of the trees removed 2010-2011 to reduce the amount of leaf litter in the lake and move towards improving the water quality the regenerating trees along the lake edge have been cut and stump treated regularly since. Other management activities which have been undertaken include:

- maintenance of the footpaths on a monthly basis or upon request from the site warden or in response to feedback from the public.
- hedgerow planting along stock fencing with annual hedgerow management; and
- tree inspections for health and safety purposes and the associated tree management.

In 2020 scrub clearance and clearance of regenerating trees was carried out in Ice House Field and areas of Douces meadow and Chestnut Paddock as part of the reptile and slow worm relocation project. Log stacks and hibernacula were created.

## 7 Management Objectives

The management strategy at Manor Park is to enhance the sites natural features for biodiversity focusing on the lake, the wildflower meadows and the woodland areas. It is also to improve the accessibility for the public throughout the year without damaging the habitats on the site.

### 7.1 Conservation management and prescriptions

The site is divided into three main management compartments, each divided into sub-compartments. In total, 11 compartments are recognised. The list below gives compartment numbers, recognised names and main vegetation types.

<i>Compartment 1</i>	Semi-improved neutral pasture
<i>Compartment 1i</i>	Chestnut Paddock.
<i>Compartment 1ii</i>	Abbey Fields.
<i>Compartment 1iii</i>	Icehouse Meadow; and
<i>Compartment 1iv</i>	Areas of plantation woodland.
<i>Compartment 2</i>	Wetland habitat
<i>Compartment 2i</i>	Victorian Lake and associated stream.
<i>Compartment 2ii</i>	Alder wet woodland.
<i>Compartment 2iii</i>	Plantation woodland fringing the lake.
<i>Compartment 3</i>	Amenity turf and public recreation areas.
<i>Compartment 3i</i>	Amenity turf and picnic area known as Douces Meadow.
<i>Compartment 3ii</i>	Children's play area.
<i>Compartment 3iii</i>	Car Park and front entrance of site; and
<i>Compartment 3iv</i>	Plantation woodland fringing the above areas.

Each compartments main habitat features are identified, and management actions prescribed to ensure the objectives are met. The compartment map is shown below.



Three important nature conservation features of Manor Park Country Park have been recognised:

- grassland including **MG1a, MG1b, MG1e, MG6b** and **MG7d** grassland.
- stands of several woodland types including **W6, W6b, W8, and W10c** woodland; and
- aquatic
- waterside habitats, flora and fauna associated with the artificial lake.

These three features are considered to be the most important in terms of future management of the site. The conservation objectives for the site are to manage these three features so that they are maintained at a reasonable conservation status.

The fourth feature is the amenity and recreational value of the site, without having a negative effect upon the nature conservation value, which will be maintained and enhanced.

An ecological scoping survey including phase 1 survey of the park was carried out in 2008 mapping the key habitats and also identifying key species in the park and local area, this data is available on request. This was followed by a series of wildlife surveys in 2009 which can be seen in appendix A.

### 7.1.2 Grassland

This excludes the amenity turf of *Compartment 3i*, which is dealt with separately in *Feature 4*. In addition, the areas of woodland and shelterbelt planted throughout the grassland compartments will be dealt with in section 7.2 Woodland.

For detailed descriptions of the NVC types refer to section 5. Boundaries between the vegetation types are often indistinct and are likely to change over time.

This management plan aims to continue the improvement of this grassland. This can be evaluated using the following criteria.

- The botanical species composition of the habitat is maintained or enhanced.
- There is no decline in the area occupied by grassland habitat.
- There is no loss of NVC communities, except where this involves progression to more species-rich communities e.g., from **MG7** to **MG6** grassland.
- There is no invasion of woody species leading to a loss of grassland habitat.

Pre-2011 management consisted of grazing of the pastures between June and December, with an annual cut, and this has maintained rough pasture over much of the site but has not improved the condition merely maintained the status quo. In 2011 no cut was carried out and 12 Highland cattle grazed from September through until February. In 2013 and 2014 this was extended from September to April. In 2015 the grazier changed and Herefords and Dexters were used as the grazing stock, stock was grazed from May to December 2015-2017 and in 2018 there were 22 stock grazing from June until 12/10/18, in 2019 it was grazed from May to October. The grazier also topped the thistles to prevent the dominance of thistle in the pasture. The site was ungrazed in 2020 and then 6 cattle grazed in 2021-23 from July to November. In 2024 a new grazier was used and the site was grazed in September and October.

The total extent of grass meadows under conservation management at Manor Park Country Park is 10.7 ha:

- Total area of *Compartment 1i* (Chestnut Paddock) 4.5 ha
- Total area of *Compartment 1ii* (Abbey Fields) 3.7 ha
- Total area of *Compartment 1iii* (Icehouse Meadow) 1.1 ha

Several factors influence the future management requirements of the grassland communities on the site. These include past management carried out by site staff, the availability of stock *i.e.*, cattle, public recreation, public health and safety, and staff and financial resources.

Manor Park Country Park is managed for public recreation. For reasons of public health and safety, the management of Manor Park Country Park, particularly along footpaths, and way-marked routes will influence the management prescriptions undertaken.

## Objective for the Grassland

1. To maintain and enhance the existing grazing pastures for nature conservation and public use.
2. Management should aim to maintain or enhance the habitat by encouraging plant diversity of the site in the long-term. This can be achieved by producing areas of long and short turf, and patches of scrub of varying height and density. By creating such local variations in the structural diversity there will be more opportunity for increased species diversity across all groups. Records of both vascular and non-vascular (lichens, bryophytes and fungi) should be surveyed and monitored as often as possible.

## Grazing of Compartment 1i and 1ii – Chestnut Paddock & Abbey Field.

*Compartment 1i* (Chestnut Paddock) and *Compartment 1ii* (Abbey Field) consists of approximately 8.2 ha of rough pasture. These fields predominantly support a mosaic of species-poor **MG7d** and slightly more species-rich **MG6b** grassland with small amounts of short turf, on footpaths, referable to **MG7a** grassland.

The optimum sward height range for obtaining a more favourable status is 5-20 cm. Light to moderate grazing within this compartment will ensure that variation in vegetation structure will be created, increasing overall species diversity. Frequent review of this grazing regime should be undertaken by the ranger team in conjunction with the grazier.

Weed control- *Compartment 1i* and *1ii* suffer from a number of weed species in particular *Cirsium* species (thistles) and *Rumex* species (docks). Some limited areas of thistle could remain as a food source for Lepidoptera and seed-feeding birds. The grazier has mechanically topped the thistles in the grazing paddocks since September 2015. Since the grazier changed in 2021 rangers have cut back the thistles.

In general, the most cost-effective method of weed control is to use foliar-acting herbicides administered by hand by using a knapsack sprayer. Grazing, annual mowing and hand-pulling should be sufficient to prevent weeds from dominating the sward.

Under the *Weeds Act (1959)* and the *Wildlife and Countryside Act (1981)*, it is an offence to permit the growth of the following species, which must therefore be controlled if they become established on a site:

- *Cirsium arvense* (Creeping Thistle).
- *Cirsium vulgare* (Spear Thistle).
- *Fallopia japonica* (Japanese Knotweed).
- *Heracleum mantegazzianum* (Giant Hogweed).
- *Rumex crispus* (Curled Dock).
- *Rumex obtusifolius* (Broad-leaved Dock); and
- *Senecio jacobaea* (Ragwort).

### Grazing dates during management plan

Year	Dates grazed
2023	8 <sup>th</sup> June - 8 <sup>th</sup> November 2023
2024	2 <sup>nd</sup> September – 7 <sup>th</sup> November 2024
2025	



2026	
2027	
2028	

### Plant several parkland trees and protect from grazing

It is suggested that several young native (or naturalized) trees are planted within the pasture (*Compartments 1i* and *1ii*). This will help to maintain the existing parkland landscape, characteristic of the area, for future generations. Currently these compartments contain a number of mature parkland trees namely *Castanea sativa* (Sweet Chestnut) and *Quercus robur* (Pedunculate Oak) in *Compartment 1i* (Chestnut Paddock) and *Fagus sylvatica* (Beech), *Tilia xeuropaea* (Lime) in *Compartment 1ii* (Abbey Field). Any of these species (if from native stock) could be planted in this area.

### Slow worm relocation project area in Chestnut paddock

The fenced off slow worm relocation area in this field has its own management plan which aims for a mix of scrub, log piles and tussocky grassland across approximately 1ha. Scrub clearance should be undertaken mid-September to mid-October with a limit of 1/3 of scrub per year. The grass should be no shorter than 150mm and must be hand cut with strimmers with care to avoid the log piles, arisings should be removed 3 days later to allow invertebrates to escape and to remove nutrients from the soil. Grass cutting should avoid ant hills, tussocks and log pile refugia to protect refuge.

All regenerating tree saplings should be hand pulled and any non-native trees removed with timber added to the log stacks.

A Map of the slow worm reptile project work is shown overleaf.



Year	Slow worm project works completed
2023-24	October 2023
2024-25	January 2025
2025-26	
2026-27	
2027-28	

## Compartment 1iii – Icehouse field

Compartment 1iii, known as Icehouse Field is approximately 1.1 hectares. The grassland is described by KWT (2004) as a mosaic of **MG1b *Arrhenatherum elatius* grassland, *Urtica dioica* sub-community** and **W24 *Rubus fruticosus*-*Holcus lanatus* underscrub**. **MG1** is dominated by coarse tussock-forming grasses i.e., *Arrhenatherum elatius* (False Oat-grass) and is generally found on sites where grazing and mowing are infrequent. **W24** is typically dominated by

mixtures of brambles, rank grasses and tall herbs. It develops in active successions around woodland and scrub margins and is often associated with **MG1 *Arrhenatherum elatius* grassland** as found in this compartment. A distinctive feature here was the abundance of tree saplings in the grassland and scrub communities, marking the tendency of this community to succeed to scrub and woodland if grazing or mowing is absent. This compartment is especially valuable for wildlife as its location on the site (beyond the lake) reduces the amount of public pressure on wildlife in this area.

This structural variation in sward height should be maintained by rotational scrub clearance with trimmers. Annual mowing with a mower for example would eventually lead to the loss of this tussocky sward structure, with the compartment being more uniform over time so any cutting must be done with brushcutters.

The optimum sward height range for obtaining a more favourable status is 10-30 cm. Light grazing within this compartment will ensure that variation in vegetation structure will be created, increasing overall species diversity. It will also maintain the tussocky nature of the grassland.

Current resources mean this area will be managed by rotational grass cutting with brushcutters to maintain sward diversity.

## Reptile relocation area

In 2020 it was agreed that Ice House field would be enhanced for reptiles as a reptile relocation site. A capital fee was paid so park staff could create hibernacula and log piles and a ten-year management agreement to manage scrub and tree regrowth appropriately was agreed. The income from this project helps to ensure the financial sustainability of the site.

Year	Reptile works completed
2023/24	October 2023
2024/25	Scheduled Jan 2025
2025/26	
2026/27	
2027/28	

## 7.2 Woodlands

Four distinct woodland NVC communities were identified at Manor Park. There were also areas that are not directly referable to an NVC community. At the eastern end of the artificial lake, in *Compartment 2ii*, moist eutrophic soils support a mosaic of **W6 *Alnus glutinosa-Urtica dioica* woodland** and **W6b *Alnus glutinosa-Urtica dioica* woodland, *Salix fragilis* sub-community**. A bank adjacent to the artificial lake, in *Compartment 3iv*, supports woodland referable to **W8 *Fraxinus excelsior-Acer campestre-Mercurialis perennis* woodland** where a number of broadleaved species are present in the canopy and the shrub and field-layers are variable but characteristically contain *Hyacinthoides non-scripta* (Bluebell) and *Rubus fruticosus* agg. (Bramble).

Two small stands referable to **W10c *Quercus robur-Pteridium aquilinum-Rubus fruticosus* woodland, *Holcus lanatus* sub-community** were identified from discrete areas in *Compartments 1i* and *1iii*. The canopy of these woodlands contained a high proportion of *Castanea sativa* (Sweet Chestnut), and they form distinctive stands in the parkland landscape.

There are stands of mixed plantation and semi-natural scrub habitats throughout the site and most are not directly referable to NVC types. They frequently contain a mix of planted and self-sown tree species and are variously managed, some with an open character and others with a denser shrub layer. Many of the discrete stands of scrub and woodland in *Compartment 3i* are fringed with rank grassland referable to **MG1 *Arrhenatherum elatius* grassland**.

Veteran trees are found in several places at Manor Park Country Park, and they greatly add to the wildlife value and landscape character of the park. Dead wood is a further valuable resource and is present at several locations within woodland habitats in the form of felled and fallen trunks of mature trees, and limited amounts of standing dead wood.

Much of the woodland at Manor Park Country Park is of relatively recent origin, and this conclusion is supported by the original OS map from 1870-1872, from which much of the current woodland is absent. An exception to this is a linear stand in *Compartment 3iv*, which predates the original OS map.

Semi-natural woodland such as **W8 *Fraxinus excelsior-Acer campestre-Mercurialis perennis* woodland** in *Compartment 3iv* and **W6 *Alnus glutinosa-Urtica dioica* woodland** in *Compartment 2ii* have had limited time to acquire the structure and species of flora and fauna characteristic of these woodland types. Much of the recent semi-natural woodland has also developed a relatively dense structure through the absence of management.

Many of the trees planted at Manor Park Country Park form a distinctive part of the parkland landscape, and now form stands or isolated individuals of mature and veteran trees.

Introduced species of tree form a conspicuous component of much of the younger plantation woodland at Manor Park e.g., //comp 3iv, and these affect the appearance and composition of the woodland habitats such that they are unlike native semi-natural woodland. This reduces the natural character of other woodland components such as flora and fauna normally associated with native, and locally appropriate, tree species and woodland types. In these areas the gradual removal of these trees through thinning of the canopy would result in the development of a more natural woodland type.

The total extent of woodland resource at Manor Park Country Park is as follows:

<b>W6/W6b:</b>	0.8 ha
<b>W8:</b>	1.68 ha
<b>W10c:</b>	ca. 0.5 ha
Plantation woodland:	4.2 ha
Total woodland resource including plantings	ca. 7 ha

## Woodland objectives

The woodland management will ensure:

- There is no loss in area of semi-natural broad-leaved woodland on the site.
- The diversity of woodland habitats currently present is maintained *i.e.*, with areas of **W6 *Alnus glutinosa-Urtica dioica* woodland**, **W6b *Alnus glutinosa-Urtica dioica* woodland**, ***Salix fragilis* sub-community**, **W8 *Fraxinus excelsior-Acer campestre-Mercurialis perennis* woodland**, and **W10c *Quercus robur-Pteridium aquilinum-Rubus fruticosus* woodland**, ***Holcus lanatus* sub-community**, as well as semi-natural broadleaved woodland and scrub habitats not referable to NVC communities.
- All veteran and important trees (wherever possible) are maintained including trees which support other notable species such as the notable



fungus species *Cariolopsis gallica*, which was found on a fallen *Fraxinus excelsior* (Ash) in Chestnut Paddock.

- Dead wood habitat is maintained in areas where it does not pose a danger to the public.
- Relatively undisturbed mature and old standards should be allowed to grow to maturity or death on site, to comprise of a minimum of 5% of the woodland or about 5 per hectare.
- To retain the woodland through minimum intervention, including mature and senescent standards, standing and fallen deadwood, and veteran trees while having due regard to the safety of site visitors, site workers and others. Remove and treat the dense stands of Sycamore to allow native trees to re-colonise.





## Veteran / Important Trees:

Manor Park Country Park has several mature and veteran trees that are of value for nature conservation.

Maintain the current range of semi-natural woodland communities. In particular the mosaic of **W6** and **W6b** woodland in *Compartment 2ii* should be retained. Periodic flooding of this area during peak rainfall and overspill from the adjacent lake will help to maintain this woodland type. If this does not occur naturally then controlled flooding should be considered. No loss of typical woodland species should occur, and the general diversity of woodland habitats should be retained to include semi-mature and mature woodland, scrub and plantation woodland. The natural character of some of the woodland is likely to continue to develop with time and a semi-natural woodland structure including varied heights of canopy and shrub-layers can be achieved through non-intervention and targeted thinning.

The majority of the woodland is subject to a policy of minimum intervention allowing high forest to become more naturalised. Non-native species from within these compartments may be removed or used to create standing and fallen dead wood.

Other key aims include:

Retention of standing deadwood, where safety allows, and of fallen and felled deadwood.

Retention of all old standard trees, creating a full list of veteran trees and by completing tree tagging.

Minimum intervention - allow the woodland to develop naturally in Compartments 1iv and 3iv

The majority of the woodland should not be actively managed, other than to maintain access and to satisfy health and safety and allow public enjoyment. In addition, introduced tree species should be thinned from the canopy if resources are available.

If resources allow Sycamore and Norway Maple control should be carried out along the bank to the South of the lake to encourage light onto the floor and reduce the dominance of Ivy and to further reduce the leaf litter going into the lake each year.

## Woodland management of wet woodland in Compartment 2ii:

Management of wet woodland should, in general, aim to maintain structural diversity, maintain the presence of typical wet woodland plant species and communities *i.e.*, **W6 *Alnus glutinosa-Urtica dioica* woodland**, provide standing and fallen dead wood, and to minimise the overall rate of change to the habitat (Forestry Commission 2003).

Therefore, this habitat type will be managed as minimum intervention. Winter seasonal flooding from the adjacent outflow stream is recommended to prevent the long-term drying up of the woodland and possible succession to other woodland communities.

The Environment Agency recommends the leak from the main lake not be repaired to protect this wet woodland habitat. (2011).

## Thinning canopy of semi-natural woodland in Compartments 3iv:

The woodland in *Compartment 3iv* contains a variety of planted and introduced species such as *Acer platanoides* (Norway Maple), *Acer pseudoplatanus* (Sycamore), and *Larix decidua* (European Larch), as well as more natural components. The removal of non-native trees will help to improve the natural species composition and physical structure of the woodland.

Woodland works completed during this plan:

Year	Works completed
2023-24	October 2023- health and safety tree works
2024-25	October – December 2023 – H&S Tree works. February planned works – removal of sycamore from northern bank of lake
2025-26	
2026-27	
2027-28	

## 7.3 The artificial lake

The lake is approximately 480 m by 30 m covering an area of 1.3 hectares. The lake is fed by a network of small streams (approximately 23 m in length), which were once used to drive a mill wheel, and are now overgrown by secondary woodland. The outlet (approximately 120 m in length) flows through a man-made channel and neither this nor the inlet streams support aquatic vascular plants.

For management purposes this area has been divided into one management compartment:

<i>Compartment 2i</i>	The inlet stream;
<i>Compartment 2i</i>	The artificial lake; and
<i>Compartment 2i</i>	The outflow stream.

The artificial lake in *Compartment 2i* is a eutrophic waterbody supporting very little aquatic vegetation. It is bordered on one side by a well-used footpath and on the other by plantation and semi-natural woodland.

The lake was last dredged in the 1950s. *Phragmites australis* (Common Reed), yellow iris and water mint was planted in 2012 at the road bridge end of the lake.

From 2010-2011 approximately 100 trees were felled along the South bank to reduce the amount of leaf litter entering the lake and improve the flow by removing submerged branches and trees. The stumps were treated to prevent regrowth. The regenerating trees will be cut and stump treated as and when required. This was last carried out in Autumn 2021.

In 2009 Willowbank engineering were commissioned to produce a scoping report for the lake proposing possible management actions costing up to £250,000. If resources become available dredging and reprofiling of the lake can be carried out to enhance the habitat but this site must be run at zero cost so reducing leaf litter by removing bankside trees and letting more light into the lake using the existing team resources is the affordable option at present.

The artificial lake suffers from the long-term addition of silt from the inflow stream and leaf-litter from overhanging trees has allowed the lake to become stagnant and nutrient enriched. The runoff from St Leonards Street drains directly into the lake also. A key aim is to reduce the

input of organic and mineral matter to the lake to enhance the value for nature conservation and public recreation.

## Pond objectives

An improved condition can be achieved if the following conditions are met:

- input of allocthonous material including through siltation and leaf-litter accumulation is reduced.
- the quantity of silt in the water body is reduced
- the wildfowl population is controlled or prevented from damaging marginal vegetation.
- the diversity and structure of the vegetation is increased.
- the wide range of mammal, bird, and invertebrate species is maintained or increased; and
- there is no loss in terms of NVC communities as identified through surveys carried out by KWT (2004), unless to more species-rich communities.

Management of the artificial lake at Manor Park Country Park should, in the long-term, aim to improve the suitability of the main water body for aquatic plant species and improve the suitability of the lake margins for the development of a broader range of marginal species and plant communities. This can be achieved through dredging the lake and re-profiling the margins, and through removing some of the surrounding and overhanging tree cover to increase the depth and reduce the nutrient status of the water. Control of the wildfowl population will provide further opportunity to enhance the diversity of marginal vegetation.

The aim is to carry out the following works during this management plan:

- Allow development of marginal vegetation by the development of soft-engineered banks. Any trees falling from the North bank will be left in the channel to act as natural silt traps. As the silt builds up the marginal vegetation will take root and create a softer bank.
- Develop reed-bed as a silt trap at the inflow edge.

- The inlet stream on the western side of the lake is the only source of freshwater input to the lake (other than rainfall), but the stream also allows the gradual siltation of the lake from the input of sediments. Continue to encourage a reed-bed as a silt trap.
- Throughout the year general pond management should include the following.
- Clearing any rubbish from the pond margins before it attracts any more.
- Cutting back regenerating trees on the south bank and stump treating to prevent regrowth.



## 7.4            Amenity and Recreational Areas

Manor Park Country Park aims to combine landscape and nature conservation with its role as a local public amenity site. with the provision of recreational facilities and general site management, where possible it has been combined with prescriptions aimed at maintaining or enhancing the nature conservation value of this area. This section concentrates on work within *Compartments 3i, 3ii and 3iii*. Woodland prescriptions for *Compartment 3iv* are given in 7.2 – *Woodland*.

The total extent of amenity turf and recreational areas at Manor Park Country Park is 6.3 ha – the areas of the sub-compartments are as follows:

<i>Compartment 3i</i> –	<i>Douces Meadow</i>	2.8 ha
Compartment 3ii –	Children’s play area	N/A
<i>Compartment 3iii</i> –	<i>Car park</i>	N/A
<i>Compartment 3iv</i> –	<i>Woodland and shelterbelts</i>	3.21 ha

The main management compartments of 7.4 (*Compartment 3i-3iii*) are of limited wildlife value - their role is to provide a recreational resource for the public. This management plan aims to maintain and where possible enhance the wildlife value, which can be evaluated using the following criteria:

- the diverse and varied structure of the grassland is maintained or enhanced.
- the population of the County Scarce plant is maintained.
- the parkland trees and areas of scattered woodland and shelterbelts are maintained.
- a typical range of animal, bird and invertebrate species are maintained or increased; and
- there is no loss in terms of NVC communities as identified through surveys carried out by KWT (2004d), unless to more species-rich communities *i.e.*, **MG6** swards.



## Amenity area objectives

To maintain and where desirable improve Manor Park Country Park as a public amenity that can be used for quiet recreation without causing damage to the ecological interest of the site. It is hoped that (where there is not a conflict with for public interest) the existing amenity grassland and recreational areas can be enhanced in terms of their wildlife value.

The management of Manor Park Country Park will be influenced by the site's main remit, to provide an area for public recreation. Kent County Council need to provide and maintain permissive and statutory rights-of-way, public rest points, picnic tables and litter bins as well as provide interpretative material to increase the educational resource of the site.

The majority of the area in *Compartment 3i* will continue to be managed for public amenity, with regular mowing to maintain short turf. This is cut on contract by Landscape Services on an annual fee with the price fixed for a 3-year period but the contract annually reviewed. The provision of picnic benches and a play area are all included under this compartment. Adjacent to the plantation woodland shelterbelt, and parkland trees, the grassland will be managed to maintain the areas of longer turf. Longer grass areas around the amenity areas will be cut during the late summer or early autumn to ensure seed set and to reduce damage to invertebrate populations. Weed species listed on *Weeds Act (1959)* and the *Wildlife and Countryside Act (1981)* will be controlled. Areas of scrub may need annual cutting to maintain limits and prevent encroachment.

A section of compartment 3.1 along the edge of the meadow adjacent to the hedgerows with Chestnut Paddock is part of a slow worm relocation project so the aim is to keep the grass is higher and log stacks are replenished as refugia.

## 7.5 Additional notes on hedgerows and scrub

### Hedgerows

The hedgerows should be managed so that they are approximately 1.5-2.0 m high and 2.5m wide at its base, tapering to 1.5 m at the top, with few gaps. The hedge sides should be trimmed every third year at the end of the winter, avoiding periods of hard frost, and after berries have been eaten by birds. Cutting with a flail is less ideal as it tends to produce a leggy hedge with a sparse bottom half. However, if carried out sensitively *i.e.*, at the end of winter (before early April), using sharp cutting implements, this method can be still beneficial for nesting birds and invertebrates.

### Bramble Scrub

The fence line between Chestnut Paddock and Abbey Fields supports a patch of **W24a *Rubus fruticosus*-*Holcus lanatus* underscrub, *Cirsium arvense*-*Cirsium vulgare* sub-community** scrub. This area of bramble scrub should be retained as it is likely to be of value to small mammals, birds, reptiles and invertebrates. It is recommended that the development of scrubby habitat along the fence-line should be encouraged.

### Scrub

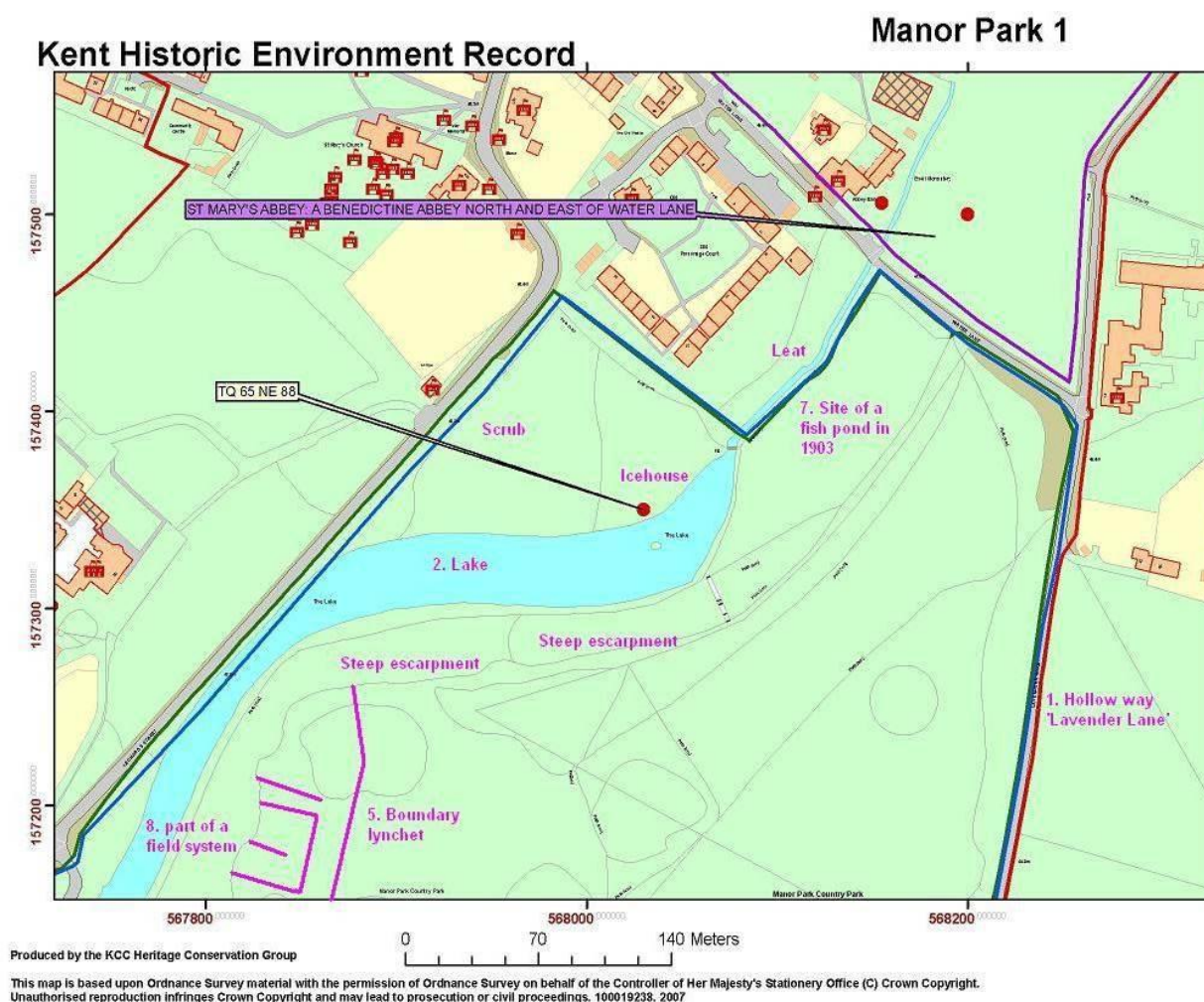
The development of scattered *Crataegus monogyna* (Hawthorn) *Rubus fruticosus* agg. (Bramble) scrub should be allowed in *Compartment 1iii*. To increase the structural diversity of the site, and provide valuable habitat for herpetofauna, invertebrates and birds, it is recommended that the scrubby area that has developed should be allowed to remain in a discrete area. This area will also be subject to grazing by cattle.

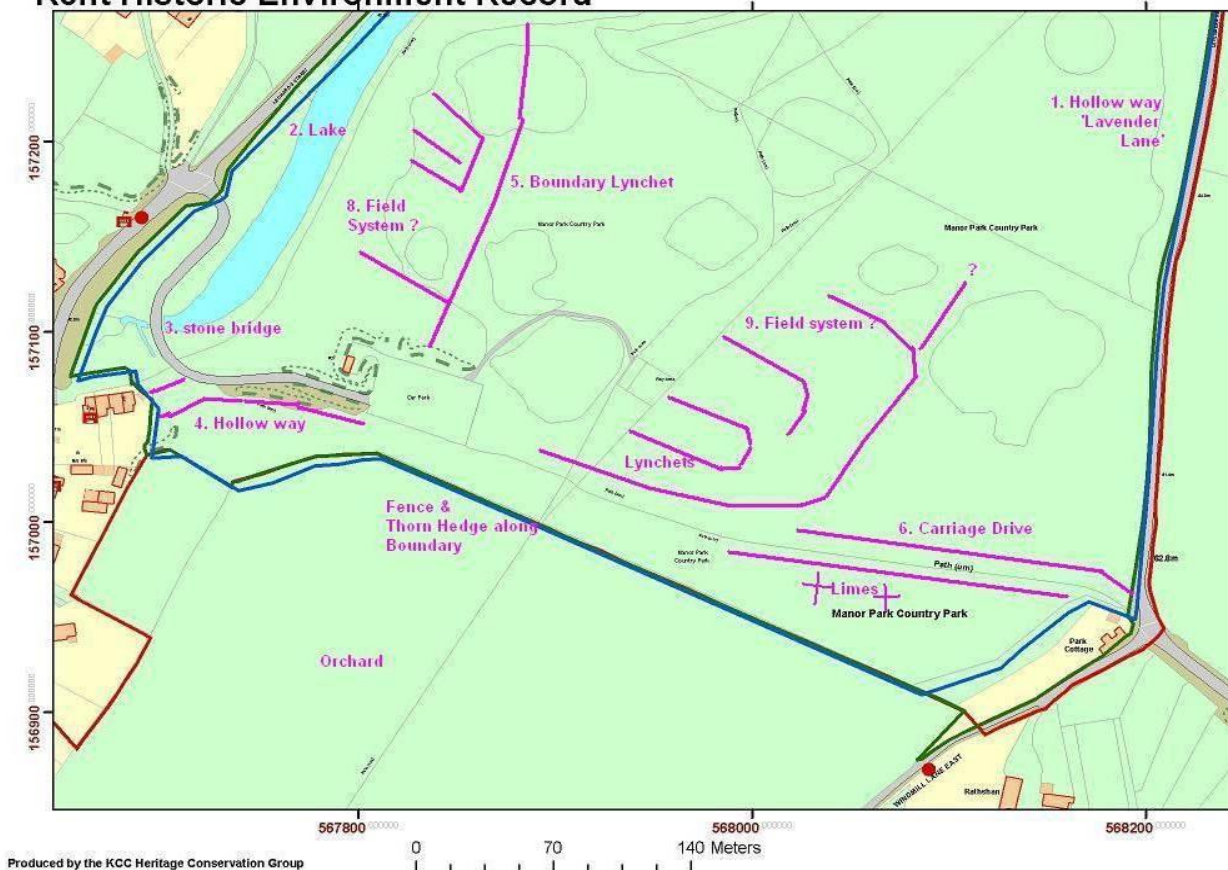
## 8 HERITAGE MANAGEMENT

The site management will aim to protect the historic landscape features of the site such as the specimen trees, the parkland vistas, the artificial lake and the Icehouse. The Historic Environment Assessment (2010) has provided a permanent record of all noticeable features on site. In 2009 a report was carried out on the Icehouse by a local enthusiast and this record is held at Shorne.

The North and West Kent team employ a community archaeologist who advises on best practice and has the support of the main heritage team at head office.

Figure 4 below shows two maps from the HEA in 2010 locating the main features:





The key aim is to protect the Icehouse and to maintain the open parkland areas of the park. If resources allow open up the view to Douces Manor from Douces meadow.

There are no resources for opening up the icehouse and the archaeologists instruction was to keep the ground cover as that helped to protect the feature and not to sign it as there was a danger that people would then walk onto the structure creating a danger of falling through the roof and damaging the feature.

## 9 VISITOR MANAGEMENT

### 9.1 General information

The management of Manor Park Country Park will be influenced by the need to provide an area for public recreation. Kent County Council need to provide and maintain the amenity area (*Compartment 3i*), car-park, permissive and statutory rights-of ways, way-marked trails, public viewpoints, public rest points, picnic tables and litter bins as well as interpretative material to increase the education resource. The play area and surfacing were replaced in 2022.

### 9.2 Building

Following public consultation on a Manor Park development plan (2008) a building was opened in 2009. This provides a small café facility and toilets for the public. The café is run in house by Kent County Council as of April 2021. All KCC buildings have wiring tests every 5 years and PAT testing every 2 years.

The building's maintenance is carried out under a KCC wide facilities services contract with Skanska. Issues are logged and then resolved subject to a service level agreement prioritizing works. Any issues with the contract are flagged to the KCC property team who ensure all works and inspections are carried out accordingly. See section 12.1.7 for more detail. The visitor services team log all building issues.

### 9.3 Car Park

There is a surfaced pay and display car park for 100 cars and an unsurfaced car park for approximately 30. The overflow car park was enlarged in 2011 through the removal of some fringe trees and scrub. Each car park has a separate pay and display machine installed in 2006 and 2011 and has automatic number plate recognition.

In 2014 the overflow car park was surfaced and bodpaved using capital funding to allow all seasons overflow parking. From August to April the car park is left as meadow before cutting for regular use in the summer season. The grassmesh areas are cut as and when necessary, through April- September.

The verges and islands in the car park area are cut frequently throughout the summer season.

## 9.4 Site furniture and signage

There are 3 benches along the lake edge and fourteen picnic benches scattered throughout the amenity grass areas. A main noticeboard is located in front of the café with welcome boards located at the front gate. 2 small noticeboards were installed at the Water Lane and St Leonards Road entrance in Jan 2012 in response to public feedback.

A lakeside interpretation board was installed to identify wildfowl and advise the public on how to help keep the ducks healthy through feeding the right things.

In 2021 additional signage was put at key points to help raise awareness of site rules and the site noticeboard was replaced.

## 9.5 Footpaths and Internal network

Two main public footpaths cross the site, MR141 and MR142. The first enters the site on the south-west boundary and meets with the car park, from here it runs along the southern edge of the site through Chestnut Paddock and meets Lavender Road (MR142). The second public footpath crosses through Douces Meadow and Abbey Fields, and meets Lavender Road in the north-east corner of the site (MR141). There are no permissive bridleways.

In 2014 a new 200m long surfaced path was constructed linking the café to the play area and the play area and along the lake to improve access to the whole site for visitors. In 2016 an additional 184m connects the water lane entrance to the lake edge path enabling a circular walk through the site on surfaced paths for the first time. This path has been waymarked (including no cycling signs), as the lake loop to guide people from the café around the park. There are 9 way markers. In 2017 a link from the car park along the back of the play area to the main circular route was created to ensure better all year access to the site. In 2022 a new circular surfaced path was installed around Douce's meadow linking the cafe to the lake top path.



## 9.6 Marketing and events

The site is promoted by roadside brown tourism signing and is marked on the Ordnance Survey map as a Country Park. In addition, Manor Park Country Park is mentioned in the County Council Countryside Sites promotional literature and the website: <https://www.kent.gov.uk/leisure-and-community/kent-country-parks> . Additional website marketing is done through Explore Kent <https://explorekent.org/> and the KDAONB web page <https://kentdowns.org.uk/>

A Country Parks event list is published on the web each year and posters advertise events on parish notice boards and in local shops.

Since a restructure in 2011 KCC have a central communication team responsible for all marketing and publicity by the council and most marketing is carried out by that team, including the main KCC website, Explore Kent is the other principal promotion site which is also managed by KCC, and promotes Countryside access throughout Kent.

In 2018 a Facebook site was launched for the site. Rangers were given social media training so they are responsible for updating the site when appropriate. As the site is not manned updates must be a minimum of quarterly to follow the changes of the seasons and any notable occurrences.

In 2022 the Country Parks employed a marketing officer specifically for the parks team, despite marketing and variety, events on this site have proved to be unsuccessful even when free and the public feedback does not support developing an events program for this site.

Every event has to go through a marketing checklist which can be seen in appendix C.

The Café being brought in house in 2021 has enabled self led trails to be run for the first time and for the site to host birthday parties.

In 2023 there were four events with 191 participants.

## 9.7 Visitors

The park has approximately 95,000 visitors per year. An initial visitor survey was carried out across all parks including Manor Park in 2007 as part of a park wide development program.

In 2010 an exit survey specific to the park was carried out, the results of this can be seen in appendix 12.3, section 12.3.1, on p.87. 75 people were interviewed of which:

- 76% came from the ABC1 social category.
- 97% visited the site by car
- 61% lived within 15 minutes of the site and a further 24% within 30 minutes of the site.
- The average journey time to the site was 17 minutes.
- 92% of visitors spend between 1 and 4 hours at the park.
- 67% were very satisfied with their visit with a further 33% being satisfied.

The exit survey was used to find out what improvements to the site the public wanted and what facilities they used while they visited and the main purpose of their visit. 71% advised they use the internet for parks information, and this has led to an improvement in the site's online information.

A 2014 exit survey identified that 99% of visitors were satisfied with their visit with 98% considering it good value for money. 98 respondents from Manor Park were involved with the survey which was carried out across 6 KCC sites.

The country parks strategy underwent both corporate and public consultation before being accepted by the council. There were 376 respondees to the consultation in 2022 and a report into the findings was produced. A full copy of the report is available on request.

An Equalities Impact Assessment is completed for all new projects and decisions, this includes increasing parking charges, installing new play equipment, provision of new services. These can be found on the KCC website.

Mosaic data is used to analyse the demographic, ethnic diversity and population living within a 30-minute drive of the park. This was last done in 2022.

A customer feedback policy provides guidance on compliments and complaints handling and in conjunction with regular customer care training. Kent County Council achieved a Customer Care charter mark for its customer care in 2008. KCC aims to acknowledge all queries within five days and respond in full within 20 days. Comments cards are available in the visitor centre and a visitor comments book is also available. Trip advisor feedback and Facebook comments are monitored and responded to where appropriate.



## 10 Environmental management

Kent County Council has internal teams focused on climate change and monitoring KCCs climate change performance. Each team has an Environmental Sustainability lead and then there are green champions within those teams. On the public webpages there is lots of info on how to help save the planet:

[KCC and the environment \(sharepoint.com\)](#)

<https://www.kent.gov.uk/environment-waste-and-planning/climate-change/climate-emergency-statement/our-climate-emergency-performance>

There is also a carbon net zero action plan with an aim of being carbon neutral by 2030, that can be found here:

[https://www.kent.gov.uk/\\_data/assets/pdf\\_file/0017/122291/KCC-Net-Zero-action-Plan.pdf](https://www.kent.gov.uk/_data/assets/pdf_file/0017/122291/KCC-Net-Zero-action-Plan.pdf)

A low emissions plan can be found here: [Kent and Medway Energy and Low Emissions Strategy - Kent County Council](#)

KCC has an action plan for engaging communities [Kent Green Action - Kent County Council](#)

The parks are part of the Kent Nature partnership <https://kentnature.org.uk/>

The council has an Environmental policy (2020) that can be found here:

[https://www.kent.gov.uk/\\_data/assets/pdf\\_file/0004/10669/KCC-Environmental-Policy.pdf](https://www.kent.gov.uk/_data/assets/pdf_file/0004/10669/KCC-Environmental-Policy.pdf)

### *General park management*

- No peat is used on site and glysohate is used for stump treatment only
- All woodland brash and arisings from park maintenance are left on site as habitat piles or corridors.
- All wood materials must be from sustainable sources.
- All plants and trees must be sourced from 'plant healthy certified' nurseries.
- Where possible electric hand tools have been introduced to reduce the use of fossil fuels
- Takeaway cups and cutlery are vegetable based.
- The park has an electric van which is used to travel between other sites.
- All aspects of the parks response to climate change are monitored to see if the impacts are in detriment to the habitats or particular species.

### *Building*

- The building has a sedum roof
- The building was designed to maximise natural light through the use of light tubes

- The KCC property and environmental sustainability team are delivering a process across all buildings to change old lights to LED lights.

## 11 Health and safety

### 11.1.1 Health, safety and security

Kent County Council has a central Health and Safety Advisory Team, whose role is to ensure that all departments follow corporate policies and legislation regarding the safety of both staff in the workplace and visitors to our sites. The advice that the Kent Country Parks team receives includes:

- Creative solutions to health and safety management challenges
- Advice on legislation and policy
- Advice and assistance on risk assessment
- Training and instruction for health and safety management
- Full back up and support following health and safety incidents
- Pressure management and change management staff support tools
- Audit services to check compliance and support developments

An internal KNET holds all the information staff and managers require including forms and guidance. The main health and safety and welfare at work policy was reviewed in 2022, there is also a 'blue book' on KNET that gives staff all details about their working terms and conditions.

The Kent Country Parks team has a designated member of staff to take the lead on liaising with the corporate team, ensuring all park staff are updated on changes in law and that all staff undertake the relevant training to their position. All Kent Country Parks staff therefore undertake core training in health and safety when they begin in a new post, and then will be given further training according to the needs of their role. Health and safety areas that are particularly relevant to the parks setting, and for which staff adopt specified practices, include:

- Accident/incident reporting
- COSHH (Control of Substances Hazardous to Health)

- Driving at work
- Fire (and fire safety in the workplace)
- First aid
- Food hygiene
- Lone working
- Management of contractors
- Manual handling
- Occupational health
- Personal Protective Equipment (PPE)
- Risk assessment
- Violent behaviour
- Working at height
- Safeguarding for children and young people
- CDM regs 2015

In addition, emergency plans have been developed for all sites (last updated October 2022) and are stored in all offices and at head office.

Site contractors either complete a permit to work and submit a risk assessment for all works carried out on site that is authorised by the Officer who commissioned the work or for larger contracts an NEC3 Engineering and Construction short contract is completed. Any contract over £50,000 goes through a competitive tender process. All non-specialist contractors must be from the KCC approved contractor list. KCC aims to use local contractors and materials in all contracts where possible.

Risk assessments are reviewed annually and updated, when necessary, these are stored electronically. An example can be seen in appendix D.

All archaeology projects undertaken are individually risk assessed.

A training matrix is maintained for all staff with all ranger staff required to be certified before they use any power tools, machinery and vehicles and catering



staff to be food hygiene certified. Education rangers are Level 3 Forest School practitioners.

## 11.2 Standard practices

Manor Park Country Park has its own on-site health and safety plans in addition to the central plans. There are daily, monthly, annual, and seasonal inspections carried out by the Countryside Wardens. If any issues arise these are reported back to the Ranger team who also ensure that the checks are carried out. They sign a weekly inspection sheet to advise the ranger team that all checks have been carried out.

The policy regarding H and S around water is that where access to a pond is encouraged, life buoys will be available where ponds are a part of the landscape.

Standard instructions are maintained, see Appendix D, for annual inspections including tree inspections, first aid kits, trailers, machinery, PPE are issued centrally. Some of these are carried out by authorised staff, others are contracted out to specialist services, and these include Tree inspections, PAT tests and fire extinguisher tests.

Site contractors either complete a permit to work and submit a risk assessment for all works carried out on site that is authorised by the Officer who commissioned the work or for larger contracts an NEC3 Engineering and Construction short contract is completed. Any contracts over £10,000 go through a competitive tender process. KCC aims to use local contractors and materials in all contracts where possible. The documentation is reviewed by the central Health and Safety team on an annual basis.

## 11.3 Risk assessments and staff training

For all tasks and where machinery or tools are used a Risk Assessment is produced and is available to all staff and or volunteers, where necessary training is given on all machinery before it can be used. Explanation such as tool talks and health and safety checks are carried out before all activities. An electronic version of all risk assessments is available, an example can be found in appendix F. These are reviewed annually by the wider Country Parks team with the last review occurring in October 2024.

Kent County Council is also an Investor in People and as such all-site staff have a personal development plan which lists all training undertaken during their employment with the council. All staff undertake core training that includes:

- Lone working
- Dealing with difficult customers
- Manual handling
- Risk Assessments
- Basic Fire Awareness
- First Aid appointed persons

Wardens have access to a warden's handbook for the site which summarises all important information that they need to know. This was reviewed in July 2021. There is also a volunteer Health & Safety manual summarising the most relevant risk assessments for the volunteer team. A risk assessment and policies folder are held at each site for staff who do not have access to the electronic versions.

All staff complete an annual occupational road risk assessment before they can drive any Kent County Council vehicle. No vehicles can be driven off-road driving unless a basic off-road driving course has been undertaken.

#### 11.4 Fire Plan

A fire plan has been undertaken for the site which identifies rendezvous points, locations of fire hydrants and safety equipment, vehicle access points, available water supplies and other hazards on site. The plan is for the building and the wider site. A copy is held in the site office and at the head office in Maidstone. The FM provider, Skanska, also carry out a building fire risk assessment.

#### 11.5 Tree inspections

Tree inspections are completed throughout the site. The Country Park is divided into three zones for tree inspections. The annual inspection of zone 1 is carried out by qualified arboriculturists, continuous visual inspections of zones 2 and 3 are carried out by park staff who have basic training in identifying tree health. This policy was audited by insurers in Aug 2021 to ensure it was fit for purpose. The zoning details can be seen in Appendix D.

## 12 Site maintenance

### 12.1 Maintenance of Equipment and site furniture

#### 12.1.1 The Daily Checks

A daily site patrol and litter pick is undertaken by site wardens on rotation through the week, the wardens work 7 days on and 7 days off shifts. In addition, the two pay and display parking machines are emptied, and the bins and dog bins are emptied if required. Any issues are flagged to the rangers so they can resolve it the following day if required. Graffiti is removed immediately by the wardens and any vandalism is dealt with immediately by park staff.

#### 12.1.2 Weekly Checks

Weekly checks are undertaken by the Site Wardens on a Friday, a copy of the sheet can be seen in appendix D and over the weekend when they are on site for a longer period. These include:

- check rubbish bins.
- check play areas (routine inspection)
- check lakes.
- check life belts & ropes (full inspection).
- check mown areas (broken glass *etc.*).
- check dog bins.
- check notice boards for posters being up to date; and
- patrol and litter pick the whole site

#### 12.1.3 Monthly Checks

Monthly site checks by Site Wardens include:

- check stability of banks adjacent to paths.
- check Extinguishers and buckets are all in correct locations.
- check gates and kissing gates.

- check path conditions.
- check boundary fence.
- check internal fences in grazing area
- check orienteering posts are all in place; and
- check all picnic benches are still in place.

#### 12.1.4 Annual Checks

The following annual checks and reviews are undertaken:

- testing of all tools and equipment *i.e.*, winches, chainsaws, trailers, electrical tools and appliances, motorised vehicles, safety hats and tools and hand tools.
- COSHH assessments.
- Risk Assessments and Occupation Road Risk Assessments.
- fire extinguishers.
- testing and checks of all buildings for general wear and tear, asbestos, and PAT electrical testing.
- annual tree inspection by an external contractor for all trees in Zone 1 areas *i.e.*, those where the public have day-to-day access.
- annual tree inspections by site staff for all trees in Zone 1 and 2 areas; and
- An annual check by RoSPA (The Royal Society for the Prevention of Accidents) of the children's play area.

#### 12.1.5 Other Checks (Depending on Season)

- Winter ice checks around ponds to prevent access and ensure the water-edge is safe.
- spread grit / salt on icy surfaces around the car park and around the visitor centre.
- check trees after gales; and
- check for flooding and subsidence on paths after heavy rain.

A record of inspection is kept for when weekly, monthly, and annual safety checks are made and by whom. The site inspection forms are held digitally.

### 12.1.6 Other Checks including litter and vandalism

The pay and display machines are maintained by Euro Car parks through a centrally managed contract with a contractual obligation to attend with 24 hours of fault reporting.

General waste and recyclable waste are removed weekly from the site as part of the FM contract.

The site is a local glass recycling point for the public and this is managed by Gravesham borough council.

### 12.1.7 Buildings Maintenance

Skanska have been awarded a 5-year (2022-2027) contract to manage all Kent County Council buildings in North and West Kent as part of a Facilities Management agreement. This includes all works to the interior and exterior of the buildings. Issues are reported to a helpdesk then actioned. An SLA exists to monitor performance and financial penalties are issued if they do not meet their agreed targets. Site staff raise a task and then Skanska investigate and resolve the issue according to their priority protocol. KCC property team monitor and manage the Facilities Management contracts for performance.

Skanska cover all aspects of the health and safety and pre-planned maintenance of the building including things like fire alarm testing, fire risk assessment, Legionella testing, PAT testing, fixed wire testing, drainage, waste, heating systems, plumbing, fire extinguisher checks, CCTV, intruder alarms, door fixings, light fixtures and general repairs and maintenance as requested by park staff.

The daily cleaner empties all the visitor centre bins and cleans the toilets, café and visitor centre daily and is on site for 3 hours a day, 7 days a week.

### 12.1.8 Brand guidelines

When signage needs to be replaced a brand guideline exists which includes ladder boards, main site noticeboards, waymarker posts, benches, and finger posts. All parks when replacing old furniture use these guidelines to ensure a corporate style is maintained throughout the parks service.

### 12.1.9 Site equipment and furniture

An inventory of site equipment is carried out annually and an electronic version is stored on site so that it can be easily updated. A map showing the location of site furniture including benches, bridges and waymarkers is also stored centrally.

## 13 COMMUNITY INVOLVEMENT

An extensive consultancy project was carried out in 2008/2009 to develop the parks management strategy. This led to the development of the café in 2009 and play areas and an easy access path link from the café to the lake.

There is a customer feedback policy in place and Kent County Council aims to acknowledge all queries within five days and respond in full within 20 days. Customers can comment through the café, Facebook or via phone.

Visitor surveys (2004, 2007, 2010 and 2014) are carried out to ensure constant feedback is received about the park.

In 2012-2014 attempts were made to set up a friends of group but despite marketing and events only 2 people were interested in joining a group, so this was not pursued any further as it was not in demand.

The education rangers can offer education if there are specific enquiries but there has been no demand for this service over the last 6 years.

Third party providers can offer birthday parties in the events space.

The site Facebook page is monitored, and any queries answered by the ranger team who also post work updates and any site information updates online also. The marketing officer gives quarterly feedback on the number of followers.

A junior park run is held every Saturday managed by volunteers with support from park staff when required.

The North Kent Ranger team host a volunteer group on a Wednesday which operates at both Shorne Woods and Manor Park Country Parks.



## 14 FINANCIAL OVERVIEW

The park's main income streams are:

- car park pay and display income
- café income
- Reptile relocation project funding (2021-2031)

An annual revenue budget is provided by Kent County Council to fund the day-to-day operations of the park. Due to pressures in the wider organisation this is not enough to fund all site services so staff are expected to raise income to offset the costs.

Car parking plays a major role in offsetting costs. Visitors who wish to park (day rate) pay £1.30 on weekdays and £2 on weekends and bank holidays per vehicle or £5 for minibuses (prior arrangement only). In 2016 the weekday parking was reduced from £2 per day as the site is heavily used on the weekend but very quiet on weekdays so to try and encourage more use the price was reduced.

The car park is too small for coaches. Kent Country Parks offers an annual season ticket for £62 which can be used at all Kent County Park's parks. Blue Badge holders can obtain an annual season ticket for £15 by calling the KCC contact centre. The contact centre charges a £3 admin fee for this service. Alternatively, Blue Badge holders can pay the regular charge to park.

Additional money is available through a modernisation of assets budget and an annual Capital works budget which is allocated by the head of country parks based on information submitted by site staff.

Kent County Council took the café in house in April 2022 and this has enabled this site to be run at cost neutral so no cost to the taxpayer.

In 2021 the whole parks service cost 28p per taxpayer in Kent to run.

The Countryside budgets are managed by the Ranger Services Manager and the visitor centre and café budgets by the Visitor Services and Events manager and Café manager. The Operations manager oversees all budgets. KCC have a policy of paying all invoices within 28 days of receipt.

Skanska manages the budget for the building's maintenance under Facilities Management contracts set up in November 2022.

## 15 THREATS AND OPPORTUNITIES

The reptile relocation income provides some sustainable income for the site over the next 5 years that can be reinvested into the site.

There are large scale housing developments planned nearby so there may be some potential improvements from section 106 money.

A scenic green trail is proposed for rural areas surrounding Manor Park which may attract a new demographic of visitors.

## 16 References and Bibliography

- Agate, E. (1998). *The Urban Handbook: a practical guide to community environmental work*. BTCV, Wallingford.
- Alexander, M. (2000). *CMS Guide to the Production of Management Plans for Protected Areas*. CMS Partnership, Aberystwyth.
- Bacon, J., Barnes, N., Coleshaw, T., Robinson, T., and Tither, J. (2001). *Practical Solutions: Equipment, Techniques and Ideas for Wildlife Management*. English Nature, Peterborough.
- Bright P., Morris, P. & Mitchell-Jones, T. (1996). *The Dormouse Conservation Handbook*. English Nature, Peterborough.
- Brooks, A. (2001). *Woodlands: a Practical Handbook*. BTCV, Wallingford.
- Brooks, A. & Agate, E. (2001). *Waterways & Wetlands: a practical handbook*. BTCV, Wallingford.
- Brooks, A & Agate, E. (1988). *Hedging: a Practical Handbook*. BTCV, Wallingford. CMS Partnership. (2000). *CMS2000*. CMS Partnership, Aberystwyth.
- Crofts, A. & Jefferson, R.G. (1999). *The Lowland Grassland Management Handbook*. English Nature / Wildlife Trust, Peterborough.
- Department of Agriculture and Rural Development (unknown). *Farm Ponds*. Countryside Management Publications. Accessed from [http://www.ruralni.gov.uk/pdfs/cmd/farm\\_ponds.pdf](http://www.ruralni.gov.uk/pdfs/cmd/farm_ponds.pdf) on 16/12/2005.
- English Nature (2003). *The Herbicide Handbook: Guidance on the Use of Herbicides on Nature Conservation Sites*. English Nature, Peterborough.
- English Nature (1999). *Veteran Trees; a Guide to Good Management*. English Nature, Peterborough.
- Fuller, R.J. (1982). *Bird Habitats in Britain*. T & AD Poyser.
- Forestry Commission. (2003). *Forestry Commission Practice Guide: The Management of Semi- natural Woodlands, 8. Wet Woodlands*. Forestry Commission, Edinburgh.
- HMSO (2000). *The Countryside and Rights of Way Act*.
- HMSO (1997). *The Conservation (Natural Habitats &c.) Regulations 1994*. HMSO (1981). *The Wildlife and Countryside Act 1981*.
- HMSO (1959). *The Weeds Act 1959*.
- Kent Biodiversity Action Plan Steering Group (1997). *The Kent Biodiversity Action Plan: A Framework for the Future of Kent's Wildlife*. Kent Biodiversity Action Plan Steering Group, Maidstone.
- Kirby, P. (2001). *Habitat Management for Invertebrates: a Practical Handbook*. RSPB, Sandy, Bedfordshire.

- Malloch, A.J.C. (1995a). *Match, A FORTRAN Program for Identification of National Vegetation Classification Communities*. Unit of Vegetation Science, University of Lancaster.
- Malloch, A.J.C. (1995b). *Vespan III, Routines for Vegetation Analysis and Species Distribution*.  
Unit of Vegetation Science, University of Lancaster.
- Philp, E.G. (2002). *Provisional Kent Mammal Atlas*. Kent Mammal Group, Kent. Philp, E.G. (1982). *Atlas of the Kent Flora*. Kent Field Club, Kent.
- Pritchard *et al* (1994) *Ancient Woodland Inventory*. English Nature, Peterborough. Rodwell, J.S. (1991). *British Plant Communities 1: Woodlands and Scrub*. Cambridge University Press, Cambridge.
- Rodwell, J.S. (1992). *British Plant Communities 3: Grasslands and Montane Communities*. Cambridge University Press, Cambridge.
- Rodwell, J.S. (1995). *British Plant Communities 4: Aquatic Communities, Swamps and Tall- herb Fens*. Cambridge University Press, Cambridge.
- Rodwell, J.S. (2000). *British Plant Communities 5: Maritime Communities and Vegetation of Open Habitats*. Cambridge University Press, Cambridge.
- Rodwell, J.S., Dring, J.C., Averis, A.B.G., Proctor, M.C.F., Malloch, A.J.C., Schaminee, J.H.J. & Dargie, T.C.D. (2000). *Review of Coverage of the National Vegetation Classification*. Joint Nature Conservation Committee, Peterborough.
- Scottish Natural Heritage (2004). *Management for People*. Scottish Natural Heritage. Tolhurst, S., and Oates, M. (2001). *The Breed Profiles Handbook – a Guide to the Selection of Livestock Breeds for Grazing Wildlife Sites*. Grazing Animal Project / English Nature, Peterborough.
- UK Biodiversity Steering Group (1998a). *UK Biodiversity Group Tranche 2 Action Plans: Volume I – Vertebrates and Vascular Plants*. English Nature.
- UK Biodiversity Steering Group (1998b). *UK Biodiversity Group Tranche 2 Action Plans: Volume II – Terrestrial and Freshwater Habitats*. English Nature.
- UK Biodiversity Steering Group (1998c). *UK Biodiversity Group Tranche 2 Action Plans: Volume III – Plants and Fungi*. English Nature.
- UK Biodiversity Steering Group (1998d). *UK Biodiversity Group Tranche 2 Action Plans: Vol IV – Invertebrates*. English Nature.
- UK Biodiversity Steering Group (1998e). *UK Biodiversity Group Tranche 2 Action Plans: Volume V – Maritime Species and Habitats*. English Nature.

UK Biodiversity Steering Group (1998f). *UK Biodiversity Group Tranche 2 Action Plans: Volume VI – Terrestrial and Freshwater Species and Habitats*. English Nature.

Waite, A. (2000). *The Kent Red Data Book: a Provisional Guide to the Rare and Threatened Flora and Fauna of Kent*. Kent County Council, Maidstone.

Wandsworth Council (1999). *London Lakes Project: Management Manual for Shallow Urban Lakes*. Wandsworth Council.

# 17 Appendix

## Appendix A – incidental species records

### Birds

Species	Status	Source & Location
Kingfisher ( <i>Alcedo atthis</i> )	Schedule 1, Amber	One individual recorded flying along the edge of the Lake i.e., <i>Compartment 2i</i> (Carter Ecological Limited 2005)
Gadwall ( <i>Anas strepera</i> )	Amber	Recorded on the Lake ( <i>Compartment 2i</i> ) Kent Wildlife Trust 2004 and Carter Ecological Limited 2005
Green woodpecker ( <i>Picus viridis</i> )	Amber	Location unknown, Kent Wildlife Trust 2004
Mute Swan ( <i>Cygnus olor</i> )	Amber	Recorded on the Lake ( <i>Compartment 2i</i> ) Kent Wildlife Trust 2004 and Carter Ecological Limited 2005
Blackbird ( <i>Turdus merula</i> )	Green	Found throughout the site, Kent Wildlife Trust 2004 and Carter Ecological Limited 2005
Blue Tit ( <i>Parus caeruleus</i> )	Green	Noted in scrub/woodland along Lake banks ( <i>Compartment 2i</i> ) Kent Wildlife Trust 2004 and Carter Ecological Limited 2005
Chiffchaff ( <i>Phylloscopus collybita</i> )	Green	Location unknown, Kent Wildlife Trust 2004
Coot ( <i>Fulica atra</i> )	Green	Recorded on the Lake ( <i>Compartment 2i</i> ) Kent Wildlife Trust 2004 and Carter Ecological Limited 2005
Great Tit ( <i>Parus major</i> )	Green	Location unknown, Kent Wildlife Trust 2004
Long-tailed Tit ( <i>Aegithalos caudatus</i> )	Green	Noted in scrub/woodland along Lake banks ( <i>Compartment 2i</i> ) Carter Ecological Limited 2005
Magpie ( <i>Pica pica</i> )	Green	Kent Wildlife Trust 2004 and Carter Ecological Limited 2005
Mallard ( <i>Anas platyrhynchos</i> )	Green	Recorded on the Lake ( <i>Compartment 2i</i> ) Kent Wildlife Trust 2004 and Carter Ecological Limited 2005
Moorhen ( <i>Gallinula chloropus</i> )	Green	Recorded on the Lake ( <i>Compartment 2i</i> ) Kent Wildlife Trust 2004 and Carter Ecological Limited 2005
Robin ( <i>Erithacus rubecula</i> )	Green	Kent Wildlife Trust 2004 and Carter Ecological Limited 2005
Sparrowhawk ( <i>Accipiter nisus</i> )	Green	Recorded from Chestnut Paddock ( <i>Compartment 1i</i> ) Carter Ecological Limited 2005
Tufted Duck ( <i>Aythya fuligula</i> )	Green	Recorded on the Lake ( <i>Compartment 2i</i> ) Carter Ecological Limited 2005
Wren ( <i>Troglodytes troglodytes</i> )	Green	Location unknown, Kent Wildlife Trust 2004

## Invertebrate records 2010

Species	Date	Site	Grid	Collector	Determiner	Stage
Acanthosoma haemorrhoidale	03/06/2010	Manor Park Country Park, West Malling	TQ681574	Clemons, L.	Clemons, L.	Adult
Acartophthalmus bicolor	26/07/2010	Manor Park Country Park, West Malling	TQ681574	Clemons, L.	Clemons, L.	Adult
Adalia bipunctata	15/05/2010	Manor Park Country Park, West Malling	TQ681574	Clemons, L.	Heal, N.F.	Adult
Adalia bipunctata	03/06/2010	Manor Park Country Park, West Malling	TQ680574	Clemons, L.	Clemons, L.	Adult
Adalia decempunctata	15/05/2010	Manor Park Country Park, West Malling	TQ682573	Clemons, L.	Clemons, L.	Adult



<i>Adela rufimitrella</i>	03/06/2010	Manor Park Country Park, West Malling	TQ681574	Clemons, L.	Clemons, L.	Adult
<i>Aelia acuminata</i>	03/06/2010	Manor Park Country Park, West Malling	TQ680574	Clemons, L.	Clemons, L.	Adult
<i>Aelia acuminata</i>	26/07/2010	Manor Park Country Park, West Malling	TQ680574	Clemons, L.	Clemons, L.	Adult
		West Malling				
<i>Aglaostigma fulvipes</i>	15/05/2010	Manor Park Country Park, West Malling	TQ681574	Clemons, L.	Clemons, L.	Adult
<i>Agriotes acuminatus</i>	03/06/2010	Manor Park Country Park, West Malling	TQ680574	Clemons, L.	Heal, N.F.	Adult
<i>Agromyza mobilis</i>	03/06/2010	Manor Park Country Park, West Malling	TQ681574	Clemons, L.	Clemons, L.	Adult
<i>Agromyza nigrociliata</i>	03/06/2010	Manor Park Country Park, West Malling	TQ680574	Clemons, L.	Clemons, L.	Adult
<i>Agromyza nigrociliata</i>	03/06/2010	Manor Park Country Park, West Malling	TQ682573	Clemons, L.	Clemons, L.	Adult
<i>Agromyza rondensis</i>	15/05/2010	Manor Park Country Park, West Malling	TQ681574	Clemons, L.	Clemons, L.	Adult
<i>Alebra albostrigella</i>	26/07/2010	Manor Park Country Park, West Malling	TQ680574	Clemons, L.	Clemons, L.	Adult
<i>Aleochara lanuginosa</i>	03/06/2010	Manor Park Country Park, West Malling	TQ680574	Clemons, L.	Heal, N.F.	Adult
<i>Allygus mixtus</i>	26/07/2010	Manor Park Country Park, West Malling	TQ680574	Clemons, L.	Clemons, L.	Adult
<i>Anaspis frontalis</i>	03/06/2010	Manor Park Country Park, West Malling	TQ680574	Clemons, L.	Heal, N.F.	Adult
<i>Anaspis garneysi</i>	03/06/2010	Manor Park Country Park, West Malling	TQ680574	Clemons, L.	Heal, N.F.	Adult
<i>Anaspis garneysi</i>	03/06/2010	Manor Park Country Park, West Malling	TQ681574	Clemons, L.	Heal, N.F.	Adult
<i>Anaspis maculata</i>	03/06/2010	Manor Park Country Park, West Malling	TQ680574	Clemons, L.	Clemons, L.	Adult
<i>Anaspis pulicaria</i>	03/06/2010	Manor Park Country Park, West Malling	TQ680574	Clemons, L.	Heal, N.F.	Adult
<i>Andrena haemorrhoa</i>	15/05/2010	Manor Park Country Park, West Malling	TQ681574	Clemons, L.	Clemons, L.	Adult
<i>Andrena minutula</i>	03/06/2010	Manor Park Country Park,	TQ681574	Clemons, L.	Clemons, L.	Adult

		West Malling				
Anomoia purmunda	26/07/2010	Manor Park Country Park, West Malling	TQ680574	Clemons, L.	Clemons, L.	Adult
Anthocomus fasciatus	03/06/2010	Manor Park Country Park, West Malling	TQ680574	Clemons, L.	Heal, N.F.	Adult
Anthocoris nemoralis	03/06/2010	Manor Park Country Park, West Malling	TQ681574	Clemons, L.	Clemons, L.	Adult
Anthocoris nemorum	15/05/2010	Manor Park Country Park, West Malling	TQ680574	Clemons, L.	Heal, N.F.	Adult
Anthocoris nemorum	15/05/2010	Manor Park Country Park, West Malling	TQ681574	Clemons, L.	Heal, N.F.	Adult
Anthocoris nemorum	03/06/2010	Manor Park Country Park, West Malling	TQ682573	Clemons, L.	Clemons, L.	Adult
Anthomyia liturata	15/05/2010	Manor Park Country Park, West Malling	TQ682573	Clemons, L.	Clemons, L.	Adult
Anthomyia liturata	03/06/2010	Manor Park Country Park, West Malling	TQ682573	Clemons, L.	Clemons, L.	Adult
Anthomyia liturata	26/07/2010	Manor Park Country Park, West Malling	TQ680574	Clemons, L.	Clemons, L.	Adult
Anthomyia procellaris	15/05/2010	Manor Park Country Park, West Malling	TQ681574	Clemons, L.	Clemons, L.	Adult
Anthomyia procellaris	03/06/2010	Manor Park Country Park, West Malling	TQ680574	Clemons, L.	Clemons, L.	Adult
Anthomyia procellaris	03/06/2010	Manor Park Country Park, West Malling	TQ681574	Clemons, L.	Clemons, L.	Adult
Anthomyia procellaris	03/06/2010	Manor Park Country Park, West Malling	TQ682573	Clemons, L.	Clemons, L.	Adult
Anthomyia procellaris	26/07/2010	Manor Park Country Park, West Malling	TQ681574	Clemons, L.	Clemons, L.	Adult
Anthomyza elbergi	26/07/2010	Manor Park Country Park, West Malling	TQ681574	Clemons, L.	Clemons, L.	Adult
Anthomyza gracilis	03/06/2010	Manor Park Country Park, West Malling	TQ680574	Clemons, L.	Clemons, L.	Adult
Aphrophora alni	26/07/2010	Manor Park Country Park, West Malling	TQ681574	Clemons, L.	Clemons, L.	Adult
Apis mellifera	26/07/2010	Manor Park Country Park, West Malling	TQ681574	Clemons, L.	Clemons, L.	Adult

<i>Arge cyanocrocea</i>	03/06/2010	Manor Park Country Park, West Malling	TQ680574	Clemons, L.	Clemons, L.	Adult
<i>Armadillidium vulgare</i>	26/07/2010	Manor Park Country Park, West Malling	TQ680574	Clemons, L.	Clemons, L.	Adult
<i>Athalia cordata</i>	03/06/2010	Manor Park Country Park, West Malling	TQ682573	Clemons, L.	Clemons, L.	Adult
<i>Athous haemorrhoidalis</i>	03/06/2010	Manor Park Country Park, West Malling	TQ680574	Clemons, L.	Clemons, L.	Adult
<i>Aulagromyza cornigera</i>	03/06/2010	Manor Park Country Park, West Malling	TQ682573	Clemons, L.	Clemons, L.	Adult
<i>Beris chalybata</i>	15/05/2010	Manor Park Country Park, West Malling	TQ681574	Clemons, L.	Clemons, L.	Adult
<i>Beris chalybata</i>	15/05/2010	Manor Park Country Park, West Malling	TQ682573	Clemons, L.	Clemons, L.	Adult
<i>Beris chalybata</i>	03/06/2010	Manor Park Country Park, West Malling	TQ680574	Clemons, L.	Clemons, L.	Adult
<i>Beris morrisii</i>	26/07/2010	Manor Park Country Park, West Malling	TQ681574	Clemons, L.	Clemons, L.	Adult
<i>Bibio anglicus</i>	15/05/2010	Manor Park Country Park, West Malling	TQ682573	Clemons, L.	Clemons, L.	Adult
<i>Bibio lanigerus</i>	15/05/2010	Manor Park Country Park, West Malling	TQ682573	Clemons, L.	Clemons, L.	Adult
<i>Bibio marci</i>	15/05/2010	Manor Park Country Park, West Malling	TQ681574	Clemons, L.	Clemons, L.	Adult
<i>Bibio marci</i>	15/05/2010	Manor Park Country Park, West Malling	TQ682573	Clemons, L.	Clemons, L.	Adult
<i>Bibio varipes</i>	15/05/2010	Manor Park Country Park, West Malling	TQ682573	Clemons, L.	Clemons, L.	Adult
<i>Bicellaria vana</i>	15/05/2010	Manor Park Country Park, West Malling	TQ681574	Clemons, L.	Clemons, L.	Adult
<i>Bicellaria vana</i>	15/05/2010	Manor Park Country Park, West Malling	TQ682573	Clemons, L.	Clemons, L.	Adult
<i>Bicellaria vana</i>	03/06/2010	Manor Park Country Park, West Malling	TQ681574	Clemons, L.	Clemons, L.	Adult
<i>Blaesoxipha plumicornis</i>	26/07/2010	Manor Park Country Park, West Malling	TQ680574	Clemons, L.	Clemons, L.	Adult
<i>Blennocampa phyllocolpa</i>	15/05/2010	Manor Park Country Park,	TQ681574	Clemons, L.	Clemons, L.	Adult

		West Malling				
<i>Bombus hortorum</i>	26/07/2010	Manor Park Country Park, West Malling	TQ681574	Clemons, L.	Clemons, L.	Adult
<i>Bombus lapidarius</i>	26/07/2010	Manor Park Country Park, West Malling	TQ680574	Clemons, L.	Clemons, L.	Adult
<i>Bombus pascuorum</i>	15/05/2010	Manor Park Country Park, West Malling	TQ681574	Clemons, L.	Clemons, L.	Adult
<i>Bombus pascuorum</i>	03/06/2010	Manor Park Country Park, West Malling	TQ681574	Clemons, L.	Clemons, L.	Adult
<i>Bombus pratorum</i>	03/06/2010	Manor Park Country Park, West Malling	TQ681574	Clemons, L.	Clemons, L.	Adult
<i>Bombus terrestris</i>	26/07/2010	Manor Park Country Park, West Malling	TQ681574	Clemons, L.	Clemons, L.	Adult
<i>Bombus vestalis</i>	26/07/2010	Manor Park Country Park, West Malling	TQ681574	Clemons, L.	Clemons, L.	Adult
<i>Boreoclytocrus ocellaris</i>	15/05/2010	Manor Park Country Park, West Malling	TQ681574	Clemons, L.	Clemons, L.	Adult
<i>Botanophila fugax</i>	26/07/2010	Manor Park Country Park, West Malling	TQ680574	Clemons, L.	Clemons, L.	Adult
<i>Botanophila striolata</i>	15/05/2010	Manor Park Country Park, West Malling	TQ682573	Clemons, L.	Clemons, L.	Adult
<i>Bruchus rufimanus</i>	15/05/2010	Manor Park Country Park, West Malling	TQ680574	Clemons, L.	Heal, N.F.	Adult
<i>Bruchus rufimanus</i>	15/05/2010	Manor Park Country Park, West Malling	TQ681574	Clemons, L.	Heal, N.F.	Adult
<i>Byturus tomentosus</i>	15/05/2010	Manor Park Country Park, West Malling	TQ680574	Clemons, L.	Heal, N.F.	Adult
<i>Byturus tomentosus</i>	03/06/2010	Manor Park Country Park, West Malling	TQ680574	Clemons, L.	Clemons, L.	Adult
<i>Caliroa varipes</i>	03/06/2010	Manor Park Country Park, West Malling	TQ680574	Clemons, L.	Clemons, L.	Adult
<i>Calocoris norvegicus</i>	26/07/2010	Manor Park Country Park, West Malling	TQ680574	Clemons, L.	Clemons, L.	Adult
<i>Calopteryx splendens</i>	03/06/2010	Manor Park Country Park, West Malling	TQ681574	Clemons, L.	Clemons, L.	Adult
<i>Cameraria ohridella</i>	15/05/2010	Manor Park Country Park,	TQ680574	Clemons, L.	Clemons, L.	Adult
		West Malling				

<i>Campsicnemus curvipes</i>	26/07/2010	Manor Park Country Park, West Malling	TQ681574	Clemons, L.	Clemons, L.	Adult
<i>Campyloneura virgula</i>	26/07/2010	Manor Park Country Park, West Malling	TQ680574	Clemons, L.	Clemons, L.	Adult
<i>Cantharis decipiens</i>	15/05/2010	Manor Park Country Park, West Malling	TQ681574	Clemons, L.	Heal, N.F.	Adult
<i>Cantharis decipiens</i>	03/06/2010	Manor Park Country Park, West Malling	TQ680574	Clemons, L.	Heal, N.F.	Adult
<i>Cantharis nigricans</i>	03/06/2010	Manor Park Country Park, West Malling	TQ680574	Clemons, L.	Heal, N.F.	Adult
<i>Cantharis pellucida</i>	03/06/2010	Manor Park Country Park, West Malling	TQ681574	Clemons, L.	Heal, N.F.	Adult
<i>Cantharis rustica</i>	03/06/2010	Manor Park Country Park, West Malling	TQ680574	Clemons, L.	Heal, N.F.	Adult
<i>Capsus ater</i>	26/07/2010	Manor Park Country Park, West Malling	TQ680574	Clemons, L.	Clemons, L.	Adult
<i>Cerceris arenaria</i>	26/07/2010	Manor Park Country Park, West Malling	TQ680574	Clemons, L.	Clemons, L.	Adult
<i>Cerodontha atra</i>	15/05/2010	Manor Park Country Park, West Malling	TQ681574	Clemons, L.	Clemons, L.	Adult
<i>Cerodontha atra</i>	03/06/2010	Manor Park Country Park, West Malling	TQ681574	Clemons, L.	Clemons, L.	Adult
<i>Cerodontha denticornis</i>	03/06/2010	Manor Park Country Park, West Malling	TQ680574	Clemons, L.	Clemons, L.	Adult
<i>Cerodontha denticornis</i>	03/06/2010	Manor Park Country Park, West Malling	TQ681574	Clemons, L.	Clemons, L.	Adult
<i>Cerodontha denticornis</i>	03/06/2010	Manor Park Country Park, West Malling	TQ682573	Clemons, L.	Clemons, L.	Adult
<i>Cerodontha denticornis</i>	26/07/2010	Manor Park Country Park, West Malling	TQ680574	Clemons, L.	Clemons, L.	Adult
<i>Cerodontha denticornis</i>	26/07/2010	Manor Park Country Park, West Malling	TQ681574	Clemons, L.	Clemons, L.	Adult
<i>Cerodontha incisa</i>	03/06/2010	Manor Park Country Park, West Malling	TQ681574	Clemons, L.	Clemons, L.	Adult
<i>Cerodontha muscina</i>	15/05/2010	Manor Park Country Park, West Malling	TQ681574	Clemons, L.	Clemons, L.	Adult
<i>Chaetorellia jaceae</i>	03/06/2010	Manor Park Country Park,	TQ680574	Clemons, L.	Clemons, L.	Adult

		West Malling				
<i>Chaetorellia jaceae</i>	26/07/2010	Manor Park Country Park,  West Malling	TQ680574	Clemons, L.	Clemons, L.	Adult
<i>Chamaemyia polystigma</i>	03/06/2010	Manor Park  Country Park, West Malling	TQ680574	Clemons, L.	Clemons, L.	Adult
<i>Chamaepsila rosae</i>	03/06/2010	Manor Park  Country Park, West Malling	TQ680574	Clemons, L.	Clemons, L.	Adult
<i>Cheilosia albitarsis</i>	15/05/2010	Manor Park Country Park,  West Malling	TQ681574	Clemons, L.	Clemons, L.	Adult
<i>Cheilosia pagana</i>	26/07/2010	Manor Park  Country Park, West Malling	TQ681574	Clemons, L.	Clemons, L.	Adult
<i>Cheilosia proxima</i>	03/06/2010	Manor Park  Country Park, West Malling	TQ680574	Clemons, L.	Clemons, L.	Adult
<i>Cheilosia ranunculi</i>	15/05/2010	Manor Park Country Park,  West Malling	TQ682573	Clemons, L.	Clemons, L.	Adult
<i>Cheilosia soror</i>	03/06/2010	Manor Park  Country Park, West Malling	TQ680574	Clemons, L.	Clemons, L.	Adult
<i>Chloromyia formosa</i>	03/06/2010	Manor Park  Country Park, West Malling	TQ680574	Clemons, L.	Clemons, L.	Adult
<i>Chlorops hypostigma</i>	03/06/2010	Manor Park Country Park,  West Malling	TQ681574	Clemons, L.	Clemons, L.	Adult
<i>Chlorops hypostigma</i>	03/06/2010	Manor Park  Country Park, West Malling	TQ682573	Clemons, L.	Clemons, L.	Adult
<i>Chlorops hypostigma</i>	26/07/2010	Manor Park Country Park,  West Malling	TQ681574	Clemons, L.	Clemons, L.	Adult
<i>Chlorops pumilionis</i>	03/06/2010	Manor Park Country Park,  West Malling	TQ682573	Clemons, L.	Clemons, L.	Adult
<i>Chorisops tibialis</i>	26/07/2010	Manor Park  Country Park, West Malling	TQ680574	Clemons, L.	Clemons, L.	Adult
<i>Chorthippus brunneus</i>	26/07/2010	Manor Park Country Park,  West Malling	TQ680574	Clemons, L.	Clemons, L.	Adult
<i>Chorthippus parallelus</i>	26/07/2010	Manor Park Country Park,  West Malling	TQ680574	Clemons, L.	Clemons, L.	Adult
<i>Chrysoperla carnea</i>	26/07/2010	Manor Park Country Park,  West Malling	TQ680574	Clemons, L.	Clemons, L.	Adult
<i>Chrysotus gramineus</i>	26/07/2010	Manor Park  Country Park, West Malling	TQ681574	Clemons, L.	Clemons, L.	Adult



<i>Clytus arietis</i>	03/06/2010	Manor Park Country Park, West Malling	TQ680574	Clemons, L.	Clemons, L.	Adult
<i>Clytus arietis</i>	03/06/2010	Manor Park Country Park, West Malling	TQ682573	Clemons, L.	Clemons, L.	Adult
<i>Coccinella septempunctata</i>	15/05/2010	Manor Park Country Park, West Malling	TQ681574	Clemons, L.	Clemons, L.	Adult
<i>Coccinella septempunctata</i>	03/06/2010	Manor Park Country Park, West Malling	TQ680574	Clemons, L.	Clemons, L.	Adult
<i>Coccinella septempunctata</i>	03/06/2010	Manor Park Country Park, West Malling	TQ681574	Clemons, L.	Clemons, L.	Adult
<i>Coccinella septempunctata</i>	03/06/2010	Manor Park Country Park, West Malling	TQ682573	Clemons, L.	Clemons, L.	Adult
<i>Coccinella septempunctata</i>	26/07/2010	Manor Park Country Park, West Malling	TQ681574	Clemons, L.	Clemons, L.	Adult
<i>Coenosia agromyzina</i>	15/05/2010	Manor Park Country Park, West Malling	TQ681574	Clemons, L.	Clemons, L.	Adult
<i>Coenosia testacea</i>	26/07/2010	Manor Park Country Park, West Malling	TQ681574	Clemons, L.	Clemons, L.	Adult
<i>Coenosia tigrina</i>	15/05/2010	Manor Park Country Park, West Malling	TQ681574	Clemons, L.	Clemons, L.	Adult
<i>Coenosia tigrina</i>	26/07/2010	Manor Park Country Park, West Malling	TQ681574	Clemons, L.	Clemons, L.	Adult
<i>Cordilura albipes</i>	26/07/2010	Manor Park Country Park, West Malling	TQ681574	Clemons, L.	Clemons, L.	Adult
<i>Cordylepherus viridis</i>	03/06/2010	Manor Park Country Park, West Malling	TQ680574	Clemons, L.	Heal, N.F.	Adult
<i>Crossocerus pusillus</i>	26/07/2010	Manor Park Country Park, West Malling	TQ681574	Clemons, L.	Clemons, L.	Adult
<i>Dasiops mucronatus</i>	03/06/2010	Manor Park Country Park, West Malling	TQ680574	Clemons, L.	Clemons, L.	Adult
<i>Dasytyrphus venustus</i>	03/06/2010	Manor Park Country Park, West Malling	TQ681574	Clemons, L.	Clemons, L.	Adult
<i>Dasytes aeratus</i>	15/05/2010	Manor Park Country Park, West Malling	TQ681574	Clemons, L.	Heal, N.F.	Adult
<i>Deraeocoris lutescens</i>	03/06/2010	Manor Park Country Park, West Malling	TQ680574	Clemons, L.	Clemons, L.	Adult
<i>Deraeocoris lutescens</i>	26/07/2010	Manor Park Country Park,	TQ681574	Clemons, L.	Clemons, L.	Adult

		West Malling				
<i>Dicranomyia lutea</i> s.s.	15/05/2010	Manor Park Country Park, West Malling	TQ681574	Clemons, L.	Clemons, L.	Adult
<i>Dicranomyia mitis</i>	15/05/2010	Manor Park Country Park, West Malling	TQ681574	Clemons, L.	Clemons, L.	Adult
<i>Dilophus febrilis</i>	15/05/2010	Manor Park Country Park, West Malling	TQ681574	Clemons, L.	Clemons, L.	Adult
<i>Dilophus febrilis</i>	03/06/2010	Manor Park Country Park, West Malling	TQ680574	Clemons, L.	Clemons, L.	Adult
<i>Dilophus febrilis</i>	03/06/2010	Manor Park Country Park, West Malling	TQ682573	Clemons, L.	Clemons, L.	Adult
<i>Dioctria rufipes</i>	03/06/2010	Manor Park Country Park, West Malling	TQ682573	Clemons, L.	Clemons, L.	Adult
<i>Dolerus fumosus</i>	15/05/2010	Manor Park Country Park, West Malling	TQ681574	Clemons, L.	Clemons, L.	Adult
<i>Dolerus niger</i>	15/05/2010	Manor Park Country Park, West Malling	TQ681574	Clemons, L.	Clemons, L.	Adult
<i>Dolerus nigratus</i>	15/05/2010	Manor Park Country Park, West Malling	TQ682573	Clemons, L.	Clemons, L.	Adult
<i>Dolichocephala irrorata</i>	15/05/2010	Manor Park Country Park, West Malling	TQ681574	Clemons, L.	Clemons, L.	Adult
<i>Dolichovespula sylvestris</i>	26/07/2010	Manor Park Country Park, West Malling	TQ681574	Clemons, L.	Clemons, L.	Adult
<i>Dolycoris baccarum</i>	26/07/2010	Manor Park Country Park, West Malling	TQ680574	Clemons, L.	Clemons, L.	Adult
<i>Drosophila phalerata</i>	26/07/2010	Manor Park Country Park, West Malling	TQ681574	Clemons, L.	Clemons, L.	Adult
<i>Elachiptera tuberculifera</i>	15/05/2010	Manor Park Country Park, West Malling	TQ681574	Clemons, L.	Clemons, L.	Adult
<i>Elachiptera tuberculifera</i>	03/06/2010	Manor Park Country Park,	TQ682573	Clemons, L.	Clemons, L.	Adult
		West Malling				
<i>Empis chioptera</i>	15/05/2010	Manor Park Country Park, West Malling	TQ682573	Clemons, L.	Clemons, L.	Adult
<i>Empis chioptera</i>	03/06/2010	Manor Park Country Park, West Malling	TQ682573	Clemons, L.	Clemons, L.	Adult
<i>Empis lutea</i>	26/07/2010	Manor Park Country Park, West Malling	TQ681574	Clemons, L.	Clemons, L.	Adult

<i>Empis nigratarsis</i>	03/06/2010	Manor Park Country Park, West Malling	TQ680574	Clemons, L.	Clemons, L.	Adult
<i>Empis nigratarsis</i>	03/06/2010	Manor Park Country Park, West Malling	TQ681574	Clemons, L.	Clemons, L.	Adult
<i>Empis nuntia</i>	15/05/2010	Manor Park Country Park, West Malling	TQ681574	Clemons, L.	Clemons, L.	Adult
<i>Empis nuntia</i>	15/05/2010	Manor Park Country Park, West Malling	TQ682573	Clemons, L.	Clemons, L.	Adult
<i>Empis nuntia</i>	03/06/2010	Manor Park Country Park, West Malling	TQ680574	Clemons, L.	Clemons, L.	Adult
<i>Empis praevia</i>	03/06/2010	Manor Park Country Park, West Malling	TQ680574	Clemons, L.	Clemons, L.	Adult
<i>Empis scutellata</i>	15/05/2010	Manor Park Country Park, West Malling	TQ682573	Clemons, L.	Clemons, L.	Adult
<i>Empis scutellata</i>	03/06/2010	Manor Park Country Park, West Malling	TQ682573	Clemons, L.	Clemons, L.	Adult
<i>Empis tessellata</i>	15/05/2010	Manor Park Country Park, West Malling	TQ681574	Clemons, L.	Clemons, L.	Adult
<i>Empis tessellata</i>	03/06/2010	Manor Park Country Park, West Malling	TQ680574	Clemons, L.	Clemons, L.	Adult
<i>Empis tessellata</i>	03/06/2010	Manor Park Country Park, West Malling	TQ681574	Clemons, L.	Clemons, L.	Adult
<i>Empis trigramma</i>	15/05/2010	Manor Park Country Park, West Malling	TQ681574	Clemons, L.	Clemons, L.	Adult
<i>Empis woodi</i>	15/05/2010	Manor Park Country Park, West Malling	TQ681574	Clemons, L.	Clemons, L.	Adult
<i>Enallagma cyathigerum</i>	03/06/2010	Manor Park Country Park, West Malling	TQ681574	Clemons, L.	Clemons, L.	Adult
<i>Epiphragma ocellare</i>	03/06/2010	Manor Park Country Park, West Malling	TQ680574	Clemons, L.	Clemons, L.	Adult
<i>Epistrophe eligans</i>	15/05/2010	Manor Park Country Park, West Malling	TQ681574	Clemons, L.	Clemons, L.	Adult
<i>Epistrophe eligans</i>	03/06/2010	Manor Park Country Park, West Malling	TQ681574	Clemons, L.	Clemons, L.	Adult
<i>Episyrphus balteatus</i>	03/06/2010	Manor Park Country Park, West Malling	TQ680574	Clemons, L.	Clemons, L.	Adult
<i>Episyrphus balteatus</i>	26/07/2010	Manor Park Country Park,	TQ680574	Clemons, L.	Clemons, L.	Adult

		West Malling				
<i>Episyrphus balteatus</i>	26/07/2010	Manor Park Country Park, West Malling	TQ681574	Clemons, L.	Clemons, L.	Adult
<i>Epuraea aestiva</i>	15/05/2010	Manor Park Country Park, West Malling	TQ681574	Clemons, L.	Heal, N.F.	Adult
<i>Epuraea melina</i>	15/05/2010	Manor Park Country Park, West Malling	TQ681574	Clemons, L.	Heal, N.F.	Adult
<i>Eriothrix rufomaculata</i>	26/07/2010	Manor Park Country Park, West Malling	TQ680574	Clemons, L.	Clemons, L.	Adult
<i>Eristalis pertinax</i>	26/07/2010	Manor Park Country Park, West Malling	TQ681574	Clemons, L.	Clemons, L.	Adult
<i>Eumerus ornatus</i>	26/07/2010	Manor Park Country Park, West Malling	TQ680574	Clemons, L.	Clemons, L.	Adult
<i>Eupteryx aurata</i>	03/06/2010	Manor Park Country Park, West Malling	TQ681574	Clemons, L.	Clemons, L.	Adult
<i>Eupteryx aurata</i>	26/07/2010	Manor Park Country Park, West Malling	TQ681574	Clemons, L.	Clemons, L.	Adult
<i>Eupteryx urticae</i>	26/07/2010	Manor Park Country Park, West Malling	TQ681574	Clemons, L.	Clemons, L.	Adult
<i>Eurygaster testudinaria</i>	15/05/2010	Manor Park Country Park, West Malling	TQ680574	Clemons, L.	Heal, N.F.	Adult
<i>Eurygaster testudinaria</i>	26/07/2010	Manor Park Country Park, West Malling	TQ680574	Clemons, L.	Clemons, L.	Adult
<i>Eutomostethus ephippium</i>	26/07/2010	Manor Park Country Park, West Malling	TQ681574	Clemons, L.	Clemons, L.	Adult
<i>Fannia canicularis</i>	03/06/2010	Manor Park Country Park, West Malling	TQ681574	Clemons, L.	Clemons, L.	Adult
<i>Fannia clara</i>	26/07/2010	Manor Park Country Park, West Malling	TQ681574	Clemons, L.	Clemons, L.	Adult
<i>Fannia coracina</i>	26/07/2010	Manor Park Country Park, West Malling	TQ681574	Clemons, L.	Clemons, L.	Adult
<i>Fannia fuscua</i>	03/06/2010	Manor Park Country Park, West Malling	TQ681574	Clemons, L.	Clemons, L.	Adult
<i>Fannia fuscua</i>	26/07/2010	Manor Park Country Park, West Malling	TQ681574	Clemons, L.	Clemons, L.	Adult
<i>Fannia lustrator</i>	15/05/2010	Manor Park Country Park, West Malling	TQ681574	Clemons, L.	Clemons, L.	Adult

Fannia serena	15/05/2010	Manor Park Country Park, West Malling	TQ681574	Clemons, L.	Clemons, L.	Adult
Fannia serena	15/05/2010	Manor Park Country Park, West Malling	TQ682573	Clemons, L.	Clemons, L.	Adult
Fannia sociella	15/05/2010	Manor Park Country Park, West Malling	TQ681574	Clemons, L.	Clemons, L.	Adult
Forficula auricularia	15/05/2010	Manor Park Country Park, West Malling	TQ681574	Clemons, L.	Clemons, L.	Adult
Forficula auricularia	03/06/2010	Manor Park Country Park, West Malling	TQ680574	Clemons, L.	Clemons, L.	Adult
Forficula auricularia	03/06/2010	Manor Park Country Park, West Malling	TQ682573	Clemons, L.	Clemons, L.	Adult
Forficula auricularia	26/07/2010	Manor Park Country Park, West Malling	TQ681574	Clemons, L.	Clemons, L.	Adult
Gastracanthus pulcherrimus	26/07/2010	Manor Park Country Park, West Malling	TQ681574	Clemons, L.	Clemons, L.	Adult
Grammoptera ruficornis	15/05/2010	Manor Park Country Park, West Malling	TQ681574	Clemons, L.	Heal, N.F.	Adult
Grammoptera ruficornis	03/06/2010	Manor Park Country Park, West Malling	TQ681574	Clemons, L.	Clemons, L.	Adult
Gymnoclasiopa plumosa	26/07/2010	Manor Park Country Park, West Malling	TQ681574	Clemons, L.	Clemons, L.	Adult
Harmonia axyridis	15/05/2010	Manor Park Country Park, West Malling	TQ681574	Clemons, L.	Clemons, L.	Adult
Harmonia axyridis	03/06/2010	Manor Park Country Park, West Malling	TQ680574	Clemons, L.	Clemons, L.	Adult
Harmonia axyridis	03/06/2010	Manor Park Country Park, West Malling	TQ682573	Clemons, L.	Clemons, L.	Adult
Hebecnema vespertina	15/05/2010	Manor Park Country Park, West Malling	TQ681574	Clemons, L.	Clemons, L.	Adult
Hebecnema vespertina	03/06/2010	Manor Park Country Park, West Malling	TQ682573	Clemons, L.	Clemons, L.	Adult
Helina impuncta	15/05/2010	Manor Park Country Park, West Malling	TQ681574	Clemons, L.	Clemons, L.	Adult
Helina impuncta	03/06/2010	Manor Park Country Park, West Malling	TQ680574	Clemons, L.	Clemons, L.	Adult
Helina impuncta	03/06/2010	Manor Park Country Park,	TQ681574	Clemons, L.	Clemons, L.	Adult

		West Malling				
<i>Helina maculipennis</i>	15/05/2010	Manor Park Country Park, West Malling	TQ682573	Clemons, L.	Clemons, L.	Adult
<i>Helina reversio</i>	26/07/2010	Manor Park Country Park, West Malling	TQ680574	Clemons, L.	Clemons, L.	Adult
<i>Hemerobius lutescens</i>	03/06/2010	Manor Park Country Park, West Malling	TQ682573	Clemons, L.	Clemons, L.	Adult
<i>Hilara brevistyla</i>	15/05/2010	Manor Park Country Park, West Malling	TQ681574	Clemons, L.	Clemons, L.	Adult
<i>Hilara cornicula</i>	15/05/2010	Manor Park Country Park, West Malling	TQ681574	Clemons, L.	Clemons, L.	Adult
<i>Hilara cornicula</i>	03/06/2010	Manor Park Country Park, West Malling	TQ682573	Clemons, L.	Clemons, L.	Adult
<i>Hilara maura</i>	15/05/2010	Manor Park Country Park, West Malling	TQ681574	Clemons, L.	Clemons, L.	Adult
<i>Hilara maura</i>	15/05/2010	Manor Park Country Park, West Malling	TQ682573	Clemons, L.	Clemons, L.	Adult
<i>Hydrellia maura</i>	15/05/2010	Manor Park Country Park, West Malling	TQ681574	Clemons, L.	Clemons, L.	Adult
<i>Hydrellia maura</i>	03/06/2010	Manor Park Country Park, West Malling	TQ681574	Clemons, L.	Clemons, L.	Adult
<i>Hydrellia maura</i>	26/07/2010	Manor Park Country Park, West Malling	TQ681574	Clemons, L.	Clemons, L.	Adult
<i>Hylemya nigrimana</i>	26/07/2010	Manor Park Country Park,	TQ681574	Clemons, L.	Clemons, L.	Adult
		West Malling				
<i>Hylemya vagans</i>	15/05/2010	Manor Park Country Park, West Malling	TQ681574	Clemons, L.	Clemons, L.	Adult
<i>Hylemya vagans</i>	26/07/2010	Manor Park Country Park, West Malling	TQ681574	Clemons, L.	Clemons, L.	Adult
<i>Hylemya variata</i>	03/06/2010	Manor Park Country Park, West Malling	TQ682573	Clemons, L.	Clemons, L.	Adult
<i>Lasiosina herpini</i>	03/06/2010	Manor Park Country Park, West Malling	TQ681574	Clemons, L.	Clemons, L.	Adult
<i>Leptocera fontinalis</i>	26/07/2010	Manor Park Country Park, West Malling	TQ681574	Clemons, L.	Clemons, L.	Adult
<i>Leptogaster cylindrica</i>	03/06/2010	Manor Park Country Park, West Malling	TQ682573	Clemons, L.	Clemons, L.	Adult



<i>Leptophyes punctatissima</i>	03/06/2010	Manor Park Country Park, West Malling	TQ681574	Clemons, L.	Clemons, L.	Adult
<i>Leptophyes punctatissima</i>	03/06/2010	Manor Park Country Park, West Malling	TQ682573	Clemons, L.	Clemons, L.	Adult
<i>Leptophyes punctatissima</i>	26/07/2010	Manor Park Country Park, West Malling	TQ680574	Clemons, L.	Clemons, L.	Adult
<i>Leucophora obtusa</i>	15/05/2010	Manor Park Country Park, West Malling	TQ681574	Clemons, L.	Clemons, L.	Adult
<i>Ligeria angusticornis</i>	03/06/2010	Manor Park Country Park, West Malling	TQ680574	Clemons, L.	Clemons, L.	Adult
<i>Limonia nubeculosa</i>	15/05/2010	Manor Park Country Park, West Malling	TQ681574	Clemons, L.	Clemons, L.	Adult
<i>Limonia phragmitidis</i>	15/05/2010	Manor Park Country Park, West Malling	TQ681574	Clemons, L.	Clemons, L.	Adult
<i>Limonia phragmitidis</i>	03/06/2010	Manor Park Country Park, West Malling	TQ680574	Clemons, L.	Clemons, L.	Adult
<i>Limonia phragmitidis</i>	03/06/2010	Manor Park Country Park, West Malling	TQ682573	Clemons, L.	Clemons, L.	Adult
<i>Liocoris tripustulatus</i>	15/05/2010	Manor Park Country Park, West Malling	TQ681574	Clemons, L.	Clemons, L.	Adult
<i>Liocoris tripustulatus</i>	03/06/2010	Manor Park Country Park, West Malling	TQ681574	Clemons, L.	Clemons, L.	Adult
<i>Liocoris tripustulatus</i>	26/07/2010	Manor Park Country Park, West Malling	TQ681574	Clemons, L.	Clemons, L.	Adult
<i>Lipsothrix nervosa</i>	03/06/2010	Manor Park Country Park, West Malling	TQ681574	Clemons, L.	Clemons, L.	Adult
<i>Liriomyza flaveola</i>	03/06/2010	Manor Park Country Park, West Malling	TQ681574	Clemons, L.	Clemons, L.	Adult
<i>Liriomyza orbona</i>	03/06/2010	Manor Park Country Park, West Malling	TQ680574	Clemons, L.	Clemons, L.	Adult
<i>Lonchoptera bifurcata</i>	26/07/2010	Manor Park Country Park, West Malling	TQ681574	Clemons, L.	Clemons, L.	Adult
<i>Lonchoptera lutea</i>	15/05/2010	Manor Park Country Park, West Malling	TQ681574	Clemons, L.	Clemons, L.	Adult
<i>Lonchoptera lutea</i>	03/06/2010	Manor Park Country Park, West Malling	TQ681574	Clemons, L.	Clemons, L.	Adult
<i>Lonchoptera lutea</i>	26/07/2010	Manor Park Country Park,	TQ681574	Clemons, L.	Clemons, L.	Adult

		West Malling				
<i>Lotophila atra</i>	15/05/2010	Manor Park Country Park,  West Malling	TQ682573	Clemons, L.	Clemons, L.	Adult
<i>Lucilia ampullacea</i>	03/06/2010	Manor Park  Country Park, West Malling	TQ681574	Clemons, L.	Clemons, L.	Adult
<i>Lucilia richardsi</i>	03/06/2010	Manor Park  Country Park, West Malling	TQ681574	Clemons, L.	Clemons, L.	Adult
<i>Lucilia sericata</i>	26/07/2010	Manor Park Country Park,  West Malling	TQ680574	Clemons, L.	Clemons, L.	Adult
<i>Lucilia sericata</i>	26/07/2010	Manor Park  Country Park, West Malling	TQ681574	Clemons, L.	Clemons, L.	Adult
<i>Lydella grisescens</i>	03/06/2010	Manor Park Country Park,  West Malling	TQ681574	Clemons, L.	Clemons, L.	Adult
<i>Macrocera centralis</i>	03/06/2010	Manor Park Country Park,  West Malling	TQ682573	Clemons, L.	Clemons, L.	Adult
<i>Macrophya annulata</i>	03/06/2010	Manor Park  Country Park, West Malling	TQ680574	Clemons, L.	Clemons, L.	Adult
<i>Macrophya annulata</i>	03/06/2010	Manor Park Country Park,  West Malling	TQ681574	Clemons, L.	Clemons, L.	Adult
<i>Magdalis armigera</i>	03/06/2010	Manor Park Country Park,  West Malling	TQ680574	Clemons, L.	Heal, N.F.	Adult
<i>Maniola jurtina</i>	26/07/2010	Manor Park Country Park,  West Malling	TQ680574	Clemons, L.	Clemons, L.	Adult
<i>Maniola jurtina</i>	26/07/2010	Manor Park  Country Park, West Malling	TQ681574	Clemons, L.	Clemons, L.	Adult
<i>Meiosimyza platycephala</i>	03/06/2010	Manor Park  Country Park, West Malling	TQ682573	Clemons, L.	Clemons, L.	Adult
<i>Meiosimyza platycephala</i>	26/07/2010	Manor Park Country Park,  West Malling	TQ680574	Clemons, L.	Clemons, L.	Adult
<i>Meiosimyza rorida</i>	15/05/2010	Manor Park  Country Park, West Malling	TQ681574	Clemons, L.	Clemons, L.	Adult
<i>Meiosimyza rorida</i>	03/06/2010	Manor Park  Country Park, West Malling	TQ681574	Clemons, L.	Clemons, L.	Adult
<i>Melanagromyza aenea</i>	03/06/2010	Manor Park Country Park,  West Malling	TQ680574	Clemons, L.	Clemons, L.	Adult
<i>Melanagromyza aenea</i>	03/06/2010	Manor Park  Country Park, West Malling	TQ682573	Clemons, L.	Clemons, L.	Adult

Melanagromyza eupatorii	03/06/2010	Manor Park Country Park, West Malling	TQ680574	Clemons, L.	Clemons, L.	Adult
Melangyna labiatarum	03/06/2010	Manor Park Country Park, West Malling	TQ682573	Clemons, L.	Clemons, L.	Adult
Melanips opacus	03/06/2010	Manor Park Country Park, West Malling	TQ682573	Clemons, L.	Clemons, L.	Adult
Melanomya nana	03/06/2010	Manor Park Country Park, West Malling	TQ680574	Clemons, L.	Clemons, L.	Adult
Melanomya nana	03/06/2010	Manor Park Country Park, West Malling	TQ681574	Clemons, L.	Clemons, L.	Adult
Melanomya nana	03/06/2010	Manor Park Country Park, West Malling	TQ682573	Clemons, L.	Clemons, L.	Adult
Melanomya nana	26/07/2010	Manor Park Country Park, West Malling	TQ681574	Clemons, L.	Clemons, L.	Adult
Melanostoma scalare	15/05/2010	Manor Park Country Park, West Malling	TQ681574	Clemons, L.	Clemons, L.	Adult
Meligethes aeneus	03/06/2010	Manor Park Country Park, West Malling	TQ680574	Clemons, L.	Heal, N.F.	Adult
Melinda viridicyanea	03/06/2010	Manor Park Country Park, West Malling	TQ681574	Clemons, L.	Clemons, L.	Adult
Meoneura neottiophila	26/07/2010	Manor Park Country Park, West Malling	TQ681574	Clemons, L.	Clemons, L.	Adult
Meromyza nigriventris	15/05/2010	Manor Park Country Park, West Malling	TQ680574	Clemons, L.	Clemons, L.	Adult
Microchrysa polita	03/06/2010	Manor Park Country Park, West Malling	TQ681574	Clemons, L.	Clemons, L.	Adult
Minettia fasciata	03/06/2010	Manor Park Country Park, West Malling	TQ682573	Clemons, L.	Clemons, L.	Adult
Minettia fasciata	26/07/2010	Manor Park Country Park, West Malling	TQ680574	Clemons, L.	Clemons, L.	Adult
Minettia inusta	26/07/2010	Manor Park Country Park, West Malling	TQ681574	Clemons, L.	Clemons, L.	Adult
Minettia longipennis	03/06/2010	Manor Park Country Park, West Malling	TQ682573	Clemons, L.	Clemons, L.	Adult
Minettia longipennis	26/07/2010	Manor Park Country Park, West Malling	TQ681574	Clemons, L.	Clemons, L.	Adult
Molophilus cinereifrons	15/05/2010	Manor Park Country Park,	TQ681574	Clemons, L.	Clemons, L.	Adult

		West Malling				
<i>Mordellochroa abdominalis</i>	03/06/2010	Manor Park Country Park, West Malling	TQ681574	Clemons, L.	Heal, N.F.	Adult
<i>Morellia aenescens</i>	03/06/2010	Manor Park Country Park, West Malling	TQ680574	Clemons, L.	Clemons, L.	Adult
<i>Morellia aenescens</i>	26/07/2010	Manor Park Country Park, West Malling	TQ681574	Clemons, L.	Clemons, L.	Adult
<i>Musca autumnalis</i>	26/07/2010	Manor Park Country Park, West Malling	TQ680574	Clemons, L.	Clemons, L.	Adult
<i>Musca autumnalis</i>	26/07/2010	Manor Park Country Park, West Malling	TQ681574	Clemons, L.	Clemons, L.	Adult
<i>Muscina levida</i>	03/06/2010	Manor Park Country Park, West Malling	TQ680574	Clemons, L.	Clemons, L.	Adult
<i>Muscina levida</i>	03/06/2010	Manor Park Country Park, West Malling	TQ681574	Clemons, L.	Clemons, L.	Adult
<i>Myathropa florea</i>	26/07/2010	Manor Park Country Park, West Malling	TQ681574	Clemons, L.	Clemons, L.	Adult
<i>Mydaea ancilla</i>	03/06/2010	Manor Park Country Park,	TQ682573	Clemons, L.	Clemons, L.	Adult
		West Malling				
<i>Nanna flavipes</i>	15/05/2010	Manor Park Country Park, West Malling	TQ681574	Clemons, L.	Clemons, L.	Adult
<i>Nanna flavipes</i>	15/05/2010	Manor Park Country Park, West Malling	TQ682573	Clemons, L.	Clemons, L.	Adult
<i>Napomyza lateralis</i>	15/05/2010	Manor Park Country Park, West Malling	TQ681574	Clemons, L.	Clemons, L.	Adult
<i>Nedyus quadrimaculatus</i>	15/05/2010	Manor Park Country Park, West Malling	TQ680574	Clemons, L.	Heal, N.F.	Adult
<i>Nedyus quadrimaculatus</i>	15/05/2010	Manor Park Country Park, West Malling	TQ681574	Clemons, L.	Clemons, L.	Adult
<i>Nemophora degeerella</i>	03/06/2010	Manor Park Country Park, West Malling	TQ680574	Clemons, L.	Clemons, L.	Adult
<i>Nemopoda nitidula</i>	03/06/2010	Manor Park Country Park, West Malling	TQ681574	Clemons, L.	Clemons, L.	Adult
<i>Neocoenorrhinus aequatus</i>	15/05/2010	Manor Park Country Park, West Malling	TQ680574	Clemons, L.	Heal, N.F.	Adult
<i>Nephrotoma quadrifaria</i>	03/06/2010	Manor Park Country Park, West Malling	TQ680574	Clemons, L.	Clemons, L.	Adult

<i>Nephrotoma quadrifaria</i>	03/06/2010	Manor Park Country Park, West Malling	TQ682573	Clemons, L.	Clemons, L.	Adult
<i>Nomada flava</i>	03/06/2010	Manor Park Country Park, West Malling	TQ681574	Clemons, L.	Clemons, L.	Adult
<i>Norellisoma spinimanum</i>	15/05/2010	Manor Park Country Park, West Malling	TQ681574	Clemons, L.	Clemons, L.	Adult
<i>Nyctia halterata</i>	03/06/2010	Manor Park Country Park, West Malling	TQ680574	Clemons, L.	Clemons, L.	Adult
<i>Nyctia halterata</i>	03/06/2010	Manor Park Country Park, West Malling	TQ681574	Clemons, L.	Clemons, L.	Adult
<i>Nyctia halterata</i>	26/07/2010	Manor Park Country Park, West Malling	TQ680574	Clemons, L.	Clemons, L.	Adult
<i>Ochina ptinoides</i>	03/06/2010	Manor Park Country Park, West Malling	TQ681574	Clemons, L.	Heal, N.F.	Adult
<i>Ocydromia glabricula</i>	26/07/2010	Manor Park Country Park, West Malling	TQ680574	Clemons, L.	Clemons, L.	Adult
<i>Ocydromia glabricula</i>	26/07/2010	Manor Park Country Park, West Malling	TQ681574	Clemons, L.	Clemons, L.	Adult
<i>Oedemera lurida</i>	26/07/2010	Manor Park Country Park, West Malling	TQ681574	Clemons, L.	Clemons, L.	Adult
<i>Oedemera nobilis</i>	03/06/2010	Manor Park Country Park, West Malling	TQ680574	Clemons, L.	Clemons, L.	Adult
<i>Opomyza florum</i>	26/07/2010	Manor Park Country Park, West Malling	TQ681574	Clemons, L.	Clemons, L.	Adult
<i>Opomyza germinationis</i>	03/06/2010	Manor Park Country Park, West Malling	TQ682573	Clemons, L.	Clemons, L.	Adult
<i>Opomyza germinationis</i>	26/07/2010	Manor Park Country Park, West Malling	TQ680574	Clemons, L.	Clemons, L.	Adult
<i>Opomyza germinationis</i>	26/07/2010	Manor Park Country Park, West Malling	TQ681574	Clemons, L.	Clemons, L.	Adult
<i>Orthops campestris</i>	26/07/2010	Manor Park Country Park, West Malling	TQ681574	Clemons, L.	Clemons, L.	Adult
<i>Oscinella hortensis</i>	03/06/2010	Manor Park Country Park, West Malling	TQ682573	Clemons, L.	Clemons, L.	Adult
<i>Oscinella maura</i>	15/05/2010	Manor Park Country Park, West Malling	TQ681574	Clemons, L.	Clemons, L.	Adult
<i>Oscinella nitidissima</i>	03/06/2010	Manor Park Country Park,	TQ682573	Clemons, L.	Clemons, L.	Adult

		West Malling				
<i>Oscinella nitidissima</i>	26/07/2010	Manor Park Country Park, West Malling	TQ681574	Clemons, L.	Clemons, L.	Adult
<i>Oulema rufocyanea</i>	15/05/2010	Manor Park Country Park, West Malling	TQ681574	Clemons, L.	Heal, N.F.	Adult
<i>Pachygaster leachii</i>	26/07/2010	Manor Park Country Park, West Malling	TQ680574	Clemons, L.	Clemons, L.	Adult
<i>Pachygaster leachii</i>	26/07/2010	Manor Park Country Park, West Malling	TQ681574	Clemons, L.	Clemons, L.	Adult
<i>Panorpa germanica</i>	15/05/2010	Manor Park Country Park, West Malling	TQ681574	Clemons, L.	Clemons, L.	Adult
<i>Panorpa germanica</i>	26/07/2010	Manor Park Country Park, West Malling	TQ681574	Clemons, L.	Clemons, L.	Adult
<i>Paradelia intersecta</i>	03/06/2010	Manor Park Country Park, West Malling	TQ682573	Clemons, L.	Clemons, L.	Adult
<i>Paraphytomyza orphana</i>	15/05/2010	Manor Park Country Park, West Malling	TQ681574	Clemons, L.	Clemons, L.	Adult
<i>Pararge aegeria</i>	15/05/2010	Manor Park Country Park, West Malling	TQ681574	Clemons, L.	Clemons, L.	Adult
<i>Pararge aegeria</i>	03/06/2010	Manor Park Country Park, West Malling	TQ680574	Clemons, L.	Clemons, L.	Adult
<i>Pararge aegeria</i>	03/06/2010	Manor Park Country Park, West Malling	TQ681574	Clemons, L.	Clemons, L.	Adult
<i>Parathelcus pollinaris</i>	15/05/2010	Manor Park Country Park, West Malling	TQ681574	Clemons, L.	Heal, N.F.	Adult
<i>Pegoplata nigroscutellata</i>	15/05/2010	Manor Park Country Park, West Malling	TQ681574	Clemons, L.	Clemons, L.	Adult
<i>Pentatoma rufipes</i>	03/06/2010	Manor Park Country Park, West Malling	TQ682573	Clemons, L.	Clemons, L.	Adult
<i>Pericoma nubila</i>	26/07/2010	Manor Park Country Park, West Malling	TQ681574	Clemons, L.	Clemons, L.	Adult
<i>Phalacrotophora berolinensis</i>	26/07/2010	Manor Park Country Park, West Malling	TQ681574	Clemons, L.	Clemons, L.	Adult
<i>Phania funesta</i>	03/06/2010	Manor Park Country Park, West Malling	TQ681574	Clemons, L.	Clemons, L.	Adult
<i>Phaonia pallida</i>	26/07/2010	Manor Park Country Park, West Malling	TQ681574	Clemons, L.	Clemons, L.	Adult

Phaonia palpata	15/05/2010	Manor Park Country Park, West Malling	TQ681574	Clemons, L.	Clemons, L.	Adult
Phaonia palpata	03/06/2010	Manor Park Country Park, West Malling	TQ680574	Clemons, L.	Clemons, L.	Adult
Phaonia serva	03/06/2010	Manor Park Country Park, West Malling	TQ680574	Clemons, L.	Clemons, L.	Adult
Phaonia serva	03/06/2010	Manor Park Country Park, West Malling	TQ681574	Clemons, L.	Clemons, L.	Adult
Phaonia subventa	15/05/2010	Manor Park Country Park, West Malling	TQ681574	Clemons, L.	Clemons, L.	Adult
Phaonia tuguriorum	15/05/2010	Manor Park Country Park, West Malling	TQ681574	Clemons, L.	Clemons, L.	Adult
Phasia obesa	03/06/2010	Manor Park Country Park, West Malling	TQ680574	Clemons, L.	Clemons, L.	Adult
Pherbellia annulipes	03/06/2010	Manor Park Country Park, West Malling	TQ681574	Clemons, L.	Clemons, L.	Adult
Pherbellia cinerella	15/05/2010	Manor Park Country Park, West Malling	TQ681574	Clemons, L.	Clemons, L.	Adult
Pherbellia cinerella	26/07/2010	Manor Park Country Park, West Malling	TQ681574	Clemons, L.	Clemons, L.	Adult
Pherbellia dubia	15/05/2010	Manor Park Country Park, West Malling	TQ681574	Clemons, L.	Clemons, L.	Adult
Phora atra	03/06/2010	Manor Park Country Park, West Malling	TQ680574	Clemons, L.	Clemons, L.	Adult
Phorbia fumigata	15/05/2010	Manor Park Country Park, West Malling	TQ682573	Clemons, L.	Clemons, L.	Adult
Phorbia moliniaris	03/06/2010	Manor Park Country Park, West Malling	TQ680574	Clemons, L.	Clemons, L.	Adult
Phyllobius pomaceus	15/05/2010	Manor Park Country Park, West Malling	TQ681574	Clemons, L.	Clemons, L.	Adult
Phyllobius pomaceus	03/06/2010	Manor Park Country Park, West Malling	TQ681574	Clemons, L.	Clemons, L.	Adult
Phyllobius pyri	15/05/2010	Manor Park Country Park, West Malling	TQ680574	Clemons, L.	Heal, N.F.	Adult
Phyllobius pyri	03/06/2010	Manor Park Country Park, West Malling	TQ680574	Clemons, L.	Heal, N.F.	Adult
Phyllobius pyri	03/06/2010	Manor Park Country Park,	TQ682573	Clemons, L.	Heal, N.F.	Adult



		West Malling				
<i>Phyllobius roboretanus</i>	15/05/2010	Manor Park Country Park, West Malling	TQ680574	Clemons, L.	Heal, N.F.	Adult
<i>Phyllobius roboretanus</i>	03/06/2010	Manor Park Country Park, West Malling	TQ680574	Clemons, L.	Heal, N.F.	Adult
<i>Phytomyza albigennis</i>	15/05/2010	Manor Park Country Park, West Malling	TQ682573	Clemons, L.	Clemons, L.	Adult
<i>Phytomyza ranunculi</i>	15/05/2010	Manor Park Country Park, West Malling	TQ681574	Clemons, L.	Clemons, L.	Adult
<i>Phytomyza ranunculi</i>	15/05/2010	Manor Park Country Park, West Malling	TQ682573	Clemons, L.	Clemons, L.	Adult
<i>Pieris napi</i>	15/05/2010	Manor Park Country Park,	TQ681574	Clemons, L.	Clemons, L.	Adult
		West Malling				
<i>Pipizella viduata</i>	03/06/2010	Manor Park Country Park, West Malling	TQ680574	Clemons, L.	Clemons, L.	Adult
<i>Pipizella viduata</i>	03/06/2010	Manor Park Country Park, West Malling	TQ682573	Clemons, L.	Clemons, L.	Adult
<i>Pipunculus thomsoni</i>	03/06/2010	Manor Park Country Park, West Malling	TQ680574	Clemons, L.	Clemons, L.	Adult
<i>Pisaura mirabilis</i>	03/06/2010	Manor Park Country Park, West Malling	TQ680574	Clemons, L.	Clemons, L.	Adult
<i>Plagiognathus arbustorum</i>	26/07/2010	Manor Park Country Park, West Malling	TQ681574	Clemons, L.	Clemons, L.	Adult
<i>Platycheirus albimanus</i>	03/06/2010	Manor Park Country Park, West Malling	TQ681574	Clemons, L.	Clemons, L.	Adult
<i>Platycheirus albimanus</i>	03/06/2010	Manor Park Country Park, West Malling	TQ682573	Clemons, L.	Clemons, L.	Adult
<i>Platycheirus peltatus</i>	03/06/2010	Manor Park Country Park, West Malling	TQ681574	Clemons, L.	Clemons, L.	Adult
<i>Platypalpus agilis</i>	15/05/2010	Manor Park Country Park, West Malling	TQ681574	Clemons, L.	Clemons, L.	Adult
<i>Platypalpus agilis</i>	03/06/2010	Manor Park Country Park, West Malling	TQ681574	Clemons, L.	Clemons, L.	Adult
<i>Platypalpus exilis</i>	03/06/2010	Manor Park Country Park, West Malling	TQ681574	Clemons, L.	Clemons, L.	Adult
<i>Platypalpus longiseta</i>	03/06/2010	Manor Park Country Park, West Malling	TQ682573	Clemons, L.	Clemons, L.	Adult

<i>Platypalpus pallidiventris</i>	03/06/2010	Manor Park Country Park, West Malling	TQ682573	Clemons, L.	Clemons, L.	Adult
<i>Platystoma seminacionis</i>	03/06/2010	Manor Park Country Park, West Malling	TQ680574	Clemons, L.	Clemons, L.	Adult
<i>Polietes lardarius</i>	15/05/2010	Manor Park Country Park, West Malling	TQ681574	Clemons, L.	Clemons, L.	Adult
<i>Polietes lardarius</i>	03/06/2010	Manor Park Country Park, West Malling	TQ681574	Clemons, L.	Clemons, L.	Adult
<i>Polietes lardarius</i>	03/06/2010	Manor Park Country Park, West Malling	TQ682573	Clemons, L.	Clemons, L.	Adult
<i>Pollenia pediculata</i>	03/06/2010	Manor Park Country Park, West Malling	TQ680574	Clemons, L.	Clemons, L.	Adult
<i>Polygonia c-album</i>	26/07/2010	Manor Park Country Park, West Malling	TQ681574	Clemons, L.	Clemons, L.	Adult
<i>Polyommatus icarus</i>	03/06/2010	Manor Park Country Park, West Malling	TQ680574	Clemons, L.	Clemons, L.	Adult
<i>Polyommatus icarus</i>	26/07/2010	Manor Park Country Park, West Malling	TQ680574	Clemons, L.	Clemons, L.	Adult
<i>Propylea quattuordecimpunctata</i>	15/05/2010	Manor Park Country Park, West Malling	TQ681574	Clemons, L.	Clemons, L.	Adult
<i>Propylea quattuordecimpunctata</i>	03/06/2010	Manor Park Country Park, West Malling	TQ680574	Clemons, L.	Clemons, L.	Adult
<i>Propylea quattuordecimpunctata</i>	03/06/2010	Manor Park Country Park, West Malling	TQ682573	Clemons, L.	Clemons, L.	Adult
<i>Propylea quattuordecimpunctata</i>	26/07/2010	Manor Park Country Park, West Malling	TQ680574	Clemons, L.	Clemons, L.	Adult
<i>Psectrotanypus varius</i>	15/05/2010	Manor Park Country Park, West Malling	TQ682573	Clemons, L.	Clemons, L.	Adult
<i>Pseudolyciella pallidiventris</i>	26/07/2010	Manor Park Country Park, West Malling	TQ681574	Clemons, L.	Clemons, L.	Adult
<i>Pseudolyciella stylata</i>	03/06/2010	Manor Park Country Park, West Malling	TQ682573	Clemons, L.	Clemons, L.	Adult
<i>Pseudolyciella stylata</i>	26/07/2010	Manor Park Country Park, West Malling	TQ681574	Clemons, L.	Clemons, L.	Adult
<i>Psila merdaria</i>	15/05/2010	Manor Park Country Park, West Malling	TQ681574	Clemons, L.	Clemons, L.	Adult
<i>Pyrochroa serraticornis</i>	03/06/2010	Manor Park Country Park,	TQ681574	Clemons, L.	Clemons, L.	Adult

		West Malling				
<i>Pyronia tithonus</i>	26/07/2010	Manor Park Country Park,  West Malling	TQ680574	Clemons, L.	Clemons, L.	Adult
<i>Rhagio tringarius</i>	03/06/2010	Manor Park  Country Park, West Malling	TQ682573	Clemons, L.	Clemons, L.	Adult
<i>Rhagonycha fulva</i>	26/07/2010	Manor Park Country Park,  West Malling	TQ680574	Clemons, L.	Clemons, L.	Adult
<i>Rhagonycha fulva</i>	26/07/2010	Manor Park Country Park,  West Malling	TQ681574	Clemons, L.	Clemons, L.	Adult
<i>Rhagonycha limbata</i>	15/05/2010	Manor Park Country Park,  West Malling	TQ680574	Clemons, L.	Heal, N.F.	Adult
<i>Rhagonycha limbata</i>	03/06/2010	Manor Park  Country Park, West Malling	TQ680574	Clemons, L.	Heal, N.F.	Adult
<i>Rhagonycha limbata</i>	03/06/2010	Manor Park  Country Park, West Malling	TQ681574	Clemons, L.	Heal, N.F.	Adult
<i>Rhagonycha limbata</i>	03/06/2010	Manor Park Country Park,  West Malling	TQ682573	Clemons, L.	Heal, N.F.	Adult
<i>Rhamphomyia atra</i>	15/05/2010	Manor Park  Country Park, West Malling	TQ681574	Clemons, L.	Clemons, L.	Adult
<i>Rhamphomyia atra</i>	03/06/2010	Manor Park  Country Park, West Malling	TQ681574	Clemons, L.	Clemons, L.	Adult
<i>Rhinophora lepida</i>	26/07/2010	Manor Park Country Park,  West Malling	TQ680574	Clemons, L.	Clemons, L.	Adult
<i>Rhinophora lepida</i>	26/07/2010	Manor Park  Country Park, West Malling	TQ681574	Clemons, L.	Clemons, L.	Adult
<i>Rhyzobius litura</i>	15/05/2010	Manor Park Country Park,  West Malling	TQ680574	Clemons, L.	Heal, N.F.	Adult
<i>Sapromyza halidayi</i>	03/06/2010	Manor Park Country Park,  West Malling	TQ682573	Clemons, L.	Clemons, L.	Adult
<i>Sapromyza hyalinata</i>	03/06/2010	Manor Park  Country Park, West Malling	TQ682573	Clemons, L.	Clemons, L.	Adult
<i>Sarcophaga arcipes</i>	03/06/2010	Manor Park Country Park,  West Malling	TQ680574	Clemons, L.	Clemons, L.	Adult
<i>Sarcophaga carnaria</i>	26/07/2010	Manor Park Country Park,  West Malling	TQ681574	Clemons, L.	Clemons, L.	Adult
<i>Sarcophaga crassimargo</i>	03/06/2010	Manor Park  Country Park, West Malling	TQ680574	Clemons, L.	Clemons, L.	Adult

<i>Sarcophaga crassimargo</i>	03/06/2010	Manor Park Country Park, West Malling	TQ681574	Clemons, L.	Clemons, L.	Adult
<i>Sarcophaga crassimargo</i>	03/06/2010	Manor Park Country Park, West Malling	TQ682573	Clemons, L.	Clemons, L.	Adult
<i>Sarcophaga crassimargo</i>	26/07/2010	Manor Park  Country Park, West Malling	TQ680574	Clemons, L.	Clemons, L.	Adult
<i>Sarcophaga dissimilis</i>	03/06/2010	Manor Park Country Park, West Malling	TQ680574	Clemons, L.	Clemons, L.	Adult
<i>Sarcophaga dissimilis</i>	03/06/2010	Manor Park  Country Park, West Malling	TQ681574	Clemons, L.	Clemons, L.	Adult
<i>Sarcophaga haemorrhoea</i>	03/06/2010	Manor Park  Country Park, West Malling	TQ680574	Clemons, L.	Clemons, L.	Adult
<i>Sarcophaga incisilobata</i>	26/07/2010	Manor Park Country Park, West Malling	TQ680574	Clemons, L.	Clemons, L.	Adult
<i>Sarcophaga pumila</i>	03/06/2010	Manor Park  Country Park, West Malling	TQ680574	Clemons, L.	Clemons, L.	Adult
<i>Sarcophaga subulata</i>	03/06/2010	Manor Park  Country Park, West Malling	TQ681574	Clemons, L.	Clemons, L.	Adult
<i>Sarcophaga variegata</i>	03/06/2010	Manor Park Country Park, West Malling	TQ680574	Clemons, L.	Clemons, L.	Adult
<i>Sarcophaga variegata</i>	26/07/2010	Manor Park  Country Park, West Malling	TQ681574	Clemons, L.	Clemons, L.	Adult
<i>Scaptomyza pallida</i>	26/07/2010	Manor Park  Country Park, West Malling	TQ681574	Clemons, L.	Clemons, L.	Adult
<i>Scathophaga furcata</i>	15/05/2010	Manor Park Country Park, West Malling	TQ681574	Clemons, L.	Clemons, L.	Adult
<i>Scathophaga stercoraria</i>	15/05/2010	Manor Park  Country Park, West Malling	TQ682573	Clemons, L.	Clemons, L.	Adult
<i>Scathophaga stercoraria</i>	03/06/2010	Manor Park  Country Park, West Malling	TQ680574	Clemons, L.	Clemons, L.	Adult
<i>Scathophaga stercoraria</i>	03/06/2010	Manor Park Country Park, West Malling	TQ681574	Clemons, L.	Clemons, L.	Adult
<i>Scathophaga stercoraria</i>	03/06/2010	Manor Park  Country Park, West Malling	TQ682573	Clemons, L.	Clemons, L.	Adult
<i>Scellus notatus</i>	03/06/2010	Manor Park Country Park, West Malling	TQ681574	Clemons, L.	Clemons, L.	Adult
<i>Scellus notatus</i>	03/06/2010	Manor Park Country Park,	TQ682573	Clemons, L.	Clemons, L.	Adult

		West Malling				
<i>Schwenckfeldina carbonaria</i>	15/05/2010	Manor Park Country Park, West Malling	TQ682573	Clemons, L.	Clemons, L.	Adult
<i>Scolopostethus thomsoni</i>	15/05/2010	Manor Park Country Park, West Malling	TQ681574	Clemons, L.	Clemons, L.	Adult
<i>Sepsis cynipsea</i>	15/05/2010	Manor Park Country Park,	TQ681574	Clemons, L.	Clemons, L.	Adult
		West Malling				
<i>Sepsis fulgens</i>	26/07/2010	Manor Park Country Park, West Malling	TQ681574	Clemons, L.	Clemons, L.	Adult
<i>Setisquamalanchaea fumosa</i>	26/07/2010	Manor Park Country Park, West Malling	TQ680574	Clemons, L.	Clemons, L.	Adult
<i>Sialis lutaria</i>	15/05/2010	Manor Park Country Park, West Malling	TQ681574	Clemons, L.	Clemons, L.	Adult
<i>Spelobia palmata</i>	26/07/2010	Manor Park Country Park, West Malling	TQ681574	Clemons, L.	Clemons, L.	Adult
<i>Sphenella marginata</i>	26/07/2010	Manor Park Country Park, West Malling	TQ680574	Clemons, L.	Clemons, L.	Adult
<i>Stenodema laevigatum</i>	15/05/2010	Manor Park Country Park, West Malling	TQ680574	Clemons, L.	Heal, N.F.	Adult
<i>Stenus flavipes</i>	15/05/2010	Manor Park Country Park, West Malling	TQ680574	Clemons, L.	Heal, N.F.	Adult
<i>Stenus similis</i>	15/05/2010	Manor Park Country Park, West Malling	TQ680574	Clemons, L.	Heal, N.F.	Adult
<i>Stevenia atramentaria</i>	03/06/2010	Manor Park Country Park, West Malling	TQ680574	Clemons, L.	Clemons, L.	Adult
<i>Sturmia bella</i>	15/05/2010	Manor Park Country Park, West Malling	TQ681574	Clemons, L.	Clemons, L.	Adult
<i>Sturmia bella</i>	03/06/2010	Manor Park Country Park, West Malling	TQ681574	Clemons, L.	Clemons, L.	Adult
<i>Subcoccinella vigintiquatuorpunctata</i>	03/06/2010	Manor Park Country Park, West Malling	TQ680574	Clemons, L.	Clemons, L.	Adult
<i>Subcoccinella vigintiquatuorpunctata</i>	26/07/2010	Manor Park Country Park, West Malling	TQ680574	Clemons, L.	Clemons, L.	Adult
<i>Suillia affinis</i>	03/06/2010	Manor Park Country Park, West Malling	TQ680574	Clemons, L.	Clemons, L.	Adult
<i>Suillia affinis</i>	26/07/2010	Manor Park Country Park, West Malling	TQ680574	Clemons, L.	Clemons, L.	Adult

<i>Suillia bicolor</i>	03/06/2010	Manor Park Country Park, West Malling	TQ681574	Clemons, L.	Clemons, L.	Adult
<i>Sylvicola cinctus</i>	15/05/2010	Manor Park Country Park, West Malling	TQ681574	Clemons, L.	Clemons, L.	Adult
<i>Symphoromyia immaculata</i>	03/06/2010	Manor Park Country Park, West Malling	TQ682573	Clemons, L.	Clemons, L.	Adult
<i>Sympycnus desouteri</i>	03/06/2010	Manor Park Country Park, West Malling	TQ681574	Clemons, L.	Clemons, L.	Adult
<i>Syntormon pallipes</i>	26/07/2010	Manor Park Country Park, West Malling	TQ681574	Clemons, L.	Clemons, L.	Adult
<i>Tachina fera</i>	03/06/2010	Manor Park Country Park, West Malling	TQ682573	Clemons, L.	Clemons, L.	Adult
<i>Tachycixius pilosus</i>	15/05/2010	Manor Park Country Park, West Malling	TQ682573	Clemons, L.	Clemons, L.	Adult
<i>Tachycixius pilosus</i>	03/06/2010	Manor Park Country Park, West Malling	TQ680574	Clemons, L.	Clemons, L.	Adult
<i>Tachyporus hypnorum</i>	15/05/2010	Manor Park Country Park, West Malling	TQ680574	Clemons, L.	Heal, N.F.	Adult
<i>Tenthredo temula</i>	03/06/2010	Manor Park Country Park, West Malling	TQ680574	Clemons, L.	Clemons, L.	Adult
<i>Tenthredo temula</i>	03/06/2010	Manor Park Country Park, West Malling	TQ681574	Clemons, L.	Clemons, L.	Adult
<i>Tephritis bardanae</i>	03/06/2010	Manor Park Country Park, West Malling	TQ681574	Clemons, L.	Clemons, L.	Adult
<i>Tephritis hyoscyami</i>	15/05/2010	Manor Park Country Park, West Malling	TQ682573	Clemons, L.	Clemons, L.	Adult
<i>Terellia tussilaginis</i>	26/07/2010	Manor Park Country Park, West Malling	TQ681574	Clemons, L.	Clemons, L.	Adult
<i>Tetanocera ferruginea</i>	15/05/2010	Manor Park Country Park, West Malling	TQ680574	Clemons, L.	Clemons, L.	Adult
<i>Tetrix subulata</i>	15/05/2010	Manor Park Country Park, West Malling	TQ682573	Clemons, L.	Clemons, L.	Adult
<i>Thaumatomyia notata</i>	15/05/2010	Manor Park Country Park, West Malling	TQ681574	Clemons, L.	Clemons, L.	Adult
<i>Thaumatomyia notata</i>	03/06/2010	Manor Park Country Park, West Malling	TQ680574	Clemons, L.	Clemons, L.	Adult
<i>Themira lucida</i>	26/07/2010	Manor Park Country Park,	TQ681574	Clemons, L.	Clemons, L.	Adult

		West Malling				
<i>Tipula lunata</i>	03/06/2010	Manor Park Country Park,  West Malling	TQ681574	Clemons, L.	Clemons, L.	Adult
<i>Tipula lunata</i>	03/06/2010	Manor Park Country Park,  West Malling	TQ682573	Clemons, L.	Clemons, L.	Adult
<i>Tipula vernalis</i>	03/06/2010	Manor Park  Country Park, West Malling	TQ680574	Clemons, L.	Clemons, L.	Adult
<i>Tricholauxania praeusta</i>	03/06/2010	Manor Park  Country Park, West Malling	TQ680574	Clemons, L.	Clemons, L.	Adult
<i>Tricholauxania praeusta</i>	03/06/2010	Manor Park Country Park,  West Malling	TQ682573	Clemons, L.	Clemons, L.	Adult
<i>Tricholauxania praeusta</i>	26/07/2010	Manor Park  Country Park, West Malling	TQ680574	Clemons, L.	Clemons, L.	Adult
<i>Tricholauxania praeusta</i>	26/07/2010	Manor Park  Country Park, West Malling	TQ681574	Clemons, L.	Clemons, L.	Adult
<i>Tytthaspis sedecimpunctata</i>	15/05/2010	Manor Park Country Park,  West Malling	TQ682573	Clemons, L.	Clemons, L.	Adult
<i>Tytthaspis sedecimpunctata</i>	26/07/2010	Manor Park  Country Park, West Malling	TQ680574	Clemons, L.	Clemons, L.	Adult
<i>Urophora cardui</i>	26/07/2010	Manor Park Country Park,  West Malling	TQ680574	Clemons, L.	Clemons, L.	Gall
<i>Urophora jaceana</i>	03/06/2010	Manor Park Country Park,  West Malling	TQ680574	Clemons, L.	Clemons, L.	Adult
<i>Urophora quadrifasciata</i>	26/07/2010	Manor Park  Country Park, West Malling	TQ680574	Clemons, L.	Clemons, L.	Adult
<i>Vanessa atalanta</i>	03/06/2010	Manor Park Country Park,  West Malling	TQ681574	Clemons, L.	Clemons, L.	Adult
<i>Vanessa atalanta</i>	26/07/2010	Manor Park Country Park,  West Malling	TQ680574	Clemons, L.	Clemons, L.	Adult
<i>Vanessa atalanta</i>	26/07/2010	Manor Park  Country Park, West Malling	TQ681574	Clemons, L.	Clemons, L.	Adult
<i>Vespula germanica</i>	26/07/2010	Manor Park Country Park,  West Malling	TQ680574	Clemons, L.	Clemons, L.	Adult
<i>Vespula germanica</i>	26/07/2010	Manor Park Country Park,  West Malling	TQ681574	Clemons, L.	Clemons, L.	Adult
<i>Volucella inanis</i>	26/07/2010	Manor Park  Country Park, West Malling	TQ680574	Clemons, L.	Clemons, L.	Adult



Volucella pellucens	26/07/2010	Manor Park Country Park, West Malling	TQ681574	Clemons, L.	Clemons, L.	Adult
Xanthochlorus galbanus	26/07/2010	Manor Park Country Park, West Malling	TQ680574	Clemons, L.	Clemons, L.	Adult
Xanthochlorus silaceus	26/07/2010	Manor Park Country Park, West Malling	TQ681574	Clemons, L.	Clemons, L.	Adult

## Arachnids

### Arachnids from 2009 (Medway Valley Countryside Partnership)

#### Araneae

Anyphaenidae                      Buzzing spiders

*Anyphaena accentuata*

Tetragnathidae                      Long-jawed spiders

*Tetragnatha montana*

*Tetragnatha extensa*

*Metallina mengei*

*Metallina segmentata*

*Pachygnatha degeeri*

Theridiidae                      Comb-footed spiders

*Theridion sisypium*

*Theridion bimaculatum*

*Paidiscura pallens*

*Enoplognatha ovata*

*Anelosimus vittatus*

Clubionidae                      Sac spiders

*Clubiona compta*

Philodromidae                      Running Crab spiders

*Philodromus cespitum*

*Philodromus albidus*                      Nb

Thomisidae                      Crab spiders

*Xysticus cristatus*

Pisauridae                      Nursery-web spiders

## Insects

### Dermaptera

#### Forficulidae

*Forficula auricularia*                      Common earwig

### Coleoptera

Orthoptera	Coccinellidae	
	<i>Thea 22-punctata</i>	22-spot ladybird
	<i>Calvia 14-guttata</i>	Cream-spot ladybird
	<i>Tytthaspis 16-punctata</i>	16-spot ladybird
	<i>Subcoccinella 24-punctata</i>	24-spot ladybird
	<i>Coccinella 7-punctata</i>	7-spot ladybird
	<i>Harmonia axyridis</i>	Harlequin ladybird
	Pyrochroidae	
	<i>Pyrochroa serraticornis</i>	Cardinal beetle
	Carabidae	
	<i>Amara plebeja</i>	
	Staphylinidae	
	<i>Stenus similis</i>	
	<i>Tachyporus obtusus</i>	
Hemiptera	Acrididae	
	<i>Chorthippus brunneus</i>	Field grasshopper
	<i>Chorthippus parallelus</i>	Meadow grasshopper
	Tettigoniidae	
	<i>Lepthyphyes punctatissima</i>	Speckled bush-cricket
	<i>Pholidoptera griseoaptera</i>	Dark bush-cricket
	<i>Conocephalus discolor</i>	Long-winged conehead
	Miridae	
	<i>Leptopterna dolabrata</i>	
	<i>Capsus ater</i>	
Hymenoptera	<i>Pithanus maerkelii</i>	
	<i>Deraeocoris ruber</i>	
	<i>Phytocoris tiliae</i>	
	<i>Phytocoris varipes</i>	
	<i>Closterotomus norwegicus</i>	
	Nabidae	
	<i>Nabis rugosus</i>	
	Pentatomidae	
	<i>Dolycoris baccarum</i>	Hairy shieldbug
	<i>Pentatoma rufipes</i>	Forest shieldbug
	<i>Acanthosoma haemorrhoidale</i>	Hawthorn shieldbug
	Coreidae	
	<i>Coreus marginatus</i>	Dock bug
	<i>Myrmica rubra</i>	
	<i>Lasius brunneus</i>	
Mollusca		
	<i>Cepaea hortensis</i>	Pink-lipped snail
	<i>Cepaea nemoralis</i>	Brown-lipped snail

## General survey information from 2009

Survey of Manor Park		
Surveyors:	MP/MF/AF/JS	
Date:	April - July 2009	
OS reference:	TQ 682573	
<b>Common Name</b>	<b>Genus</b>	<b>Species</b>
Alder	<i>Alnus</i>	<i>glutinosa</i>
Alexanders	<i>Smyrniium</i>	<i>oleraceum</i>
Annual Meadow-grass	<i>Poa</i>	<i>annua</i>

Ash	<i>Fraxinus</i>	<i>excelsior</i>
Aspen	<i>Populus</i>	<i>tremula</i>
Beaked Hawksbeard	<i>Crepis</i>	<i>vesicaria</i>
Beech	<i>Fagus</i>	<i>sylvatica</i>
Bird's-foot Trefoil	<i>Lotus</i>	<i>corniculatus</i>
Biting midge larvae	<i>Chironomids</i>	
Bittersweet	<i>solanm</i>	<i>dulcamara</i>
Blackbird	<i>Turdus</i>	<i>merula</i>
Blackcap	<i>sylvia</i>	<i>atricapilla</i>
Blackthorn	<i>Prunus</i>	<i>spinosa</i>
Blanket Weed	<i>Spirogyra</i>	<i>adnate</i>
Blue tailed damselfly	<i>ischnura</i>	<i>elegans</i>
Blue Tit	<i>Cyanistes</i>	<i>caeruleus</i>
Bramble	<i>Rubus</i>	<i>fruticosus agg</i>
Broad-leafed Dock	<i>Rumex</i>	<i>obtusifolius</i>
Brooklime	<i>Veronica</i>	<i>beccabunga</i>
Brown Rat	<i>Rattus</i>	<i>norvegicus</i>
Buff-tailed Bumblebee	<i>Bombus</i>	<i>terrestris</i>
Bullhead	<i>Cottus</i>	<i>gobio</i>
Carp	<i>cyprinu</i>	<i>carpio</i>
Carrion Crow	<i>Corvus</i>	<i>corone</i>
Cat's-ear	<i>Hypochaeris</i>	<i>radicata</i>
Chaffinch	<i>Fringilla</i>	<i>coelebs</i>
Cherry	<i>Prunus</i>	<i>avium</i>
Chiffchaff	<i>Phylloscopus</i>	<i>collybita</i>
Cleavers	<i>Galium</i>	<i>aparine</i>
Cock's-foot	<i>Dactylis</i>	<i>glomerata</i>
Comma	<i>Polygonia</i>	<i>c-album</i>
Common Blue	<i>Polyommatus</i>	<i>icarus</i>
Common Carder Bee	<i>Bombus</i>	<i>pascuorum</i>
common darter dragonfly	<i>sympetrum</i>	<i>striolatum</i>
Common Dog-violet	<i>Viola</i>	<i>riviniana</i>
Common Field-speedwell	<i>Veronica</i>	<i>persica</i>
Common Froghopper	<i>Philaenus</i>	<i>spumarius</i>
Common Mallow	<i>Malva</i>	<i>sylvestris</i>
Common Mouse-ear	<i>Cerastium</i>	<i>fontanum</i>
Common Nettle	<i>Urtica</i>	<i>dioica</i>
Common Poppy	<i>Papaver</i>	<i>rhoeas</i>

Common Reed	<i>Phragmites</i>	<i>australis</i>
Common Sorrel	<i>Rumex</i>	<i>acetosa</i>
common St john's wort	<i>hypericum</i>	<i>perforatum</i>
Common Vetch	<i>Vicia</i>	<i>sativa</i>
Common Wasp	<i>Vespula</i>	<i>vulgaris</i>
Coot	<i>Fulica</i>	<i>atra</i>
Cow parsley	<i>Anthiscus</i>	<i>sylvestris</i>
Crack willow	<i>Salix</i>	<i>fragilis</i>
Creeping Buttercup	<i>Ranunculus</i>	<i>repens</i>
Creeping Cinquefoil	<i>Potentilla</i>	<i>repens</i>
Creeping Thistle	<i>Cirsium</i>	<i>arvense</i>
Crested Dogstail	<i>Cynosurus</i>	<i>cristatus</i>
Crosswort	<i>Cruciata</i>	<i>mollugo</i>
Cuckoo-pint / Lords & Ladies	<i>Arum</i>	<i>maculatum</i>
Daffodil	<i>Narcissus</i>	<i>pseudonarcissus</i>
Daisy	<i>Bellis</i>	<i>perennis</i>
Dandelion	<i>Taraxacum</i>	<i>agg</i>
Dog Rose	<i>Rosa</i>	<i>canina</i>
Dog's Mercury	<i>Mercurialis</i>	<i>perennis</i>
Dogwood	<i>Cornus</i>	<i>sanguinea</i>
Elder	<i>Sambucus</i>	<i>nigra</i>
False Fox Sedge	<i>Carex</i>	<i>otrubae</i>
Fat-hen	<i>Cheropodium</i>	<i>album</i>
Field Bindweed	<i>Convulvulus</i>	<i>arvensis</i>
Field Forget-me Not	<i>Myosotis</i>	<i>arvensis</i>
Field maple	<i>Acer</i>	<i>campestre</i>
Freshwater shrimp	<i>Gammarus</i>	<i>pulex</i>
Fungus sp.	<i>Inonotus</i>	<i>dryadeus</i>
Garden Bumblebee	<i>Bombus</i>	<i>hortorum</i>
Garden snail	<i>Helix</i>	<i>aspersa</i>
Garlic Mustard	<i>Alliaria</i>	<i>petiolata</i>
Gatekeeper	<i>Pyronia</i>	<i>tithonus</i>
Germander Speedwell	<i>Veronica</i>	<i>chamaedrys</i>
Goat Willow	<i>Salix</i>	<i>caprea</i>
Goat's-beard	<i>Tragopogon</i>	<i>pratensis agg</i>
Great Tit	<i>Parus</i>	<i>major</i>
Great Willowherb	<i>Epilobium</i>	<i>hirsutum</i>
Greater Plantain	<i>Plantago</i>	<i>major</i>

Green Alkanet	<i>Pentaglottis</i>	<i>sempervirens</i>
Green Woodpecker	<i>Picus</i>	<i>viridis</i>
Grey Poplar	<i>Populus</i>	<i>x canescens</i>
Grey Wagtail	<i>Motacilla</i>	<i>cinerea</i>
Ground Ivy	<i>Glechoma</i>	<i>hederacea</i>
Ground-elder	<i>Aegopodium</i>	<i>podagraria</i>
Groundsel	<i>Senecio</i>	<i>vulgaris</i>
Hartstongue	<i>Phyllitis</i>	<i>scolopendrium</i>
Hawthorn	<i>Crataegus</i>	<i>monogyna</i>
Hazel	<i>Corylus</i>	<i>avellana</i>
Hedge Woundwort	<i>Stachys</i>	<i>sylvatica</i>
Hoglouse	<i>Asellus</i>	<i>aquaticus</i>
Hogweed	<i>Heracleum</i>	<i>sphondylium</i>
Holly	<i>Ilex</i>	<i>aquifolium</i>
Honey Bee	<i>Apis</i>	<i>mellifera</i>
Horse Chestnut	<i>Aesculus</i>	<i>hippocastanum</i>
Hoverfly	<i>Eupeoides</i>	<i>corollae</i>
Hoverfly	<i>Volucella</i>	<i>pellucins</i>
Ivy	<i>Hedera</i>	<i>helix</i>
Jay	<i>Garrulus</i>	<i>glandarius</i>
Larch	<i>Larix</i>	<i>decidua</i>
Large-white	<i>Pieris</i>	<i>brassicae</i>
Leafhopper nymh spp.	<i>Cicadellidae</i>	
Lesser burdock	<i>Arctium</i>	<i>minus</i>
Lesser Celandine	<i>Ranunculus</i>	<i>ficaria</i>
lesser stitchwort	<i>stellaria</i>	<i>garminae</i>
Lesser Stitchwort	<i>Stellaria</i>	<i>graminea</i>
Long Stalked Cranesbill	<i>Geranium</i>	<i>columbinum</i>
Love in a mist	<i>nigella</i>	<i>damascena</i>
Magpie	<i>Pica</i>	<i>pica</i>
Mallard	<i>Anas</i>	<i>platyrhynchos</i>
Marmalade Fly	<i>Episyrphus</i>	<i>balteatus</i>
Marsh Thistle	<i>Cirsium</i>	<i>palustre</i>
Meadow Brome	<i>Bromus</i>	<i>commutatus</i>
Meadow Brown	<i>Maniola</i>	<i>jurtina</i>
Meadow Buttercup	<i>Ranunculus</i>	<i>acris</i>
Meadow Cranesbill	<i>Geranium</i>	<i>pratense</i>

Meadow Crane's-bill	<i>Geranium</i>	<i>pratense</i>
Meadow Fescue	<i>Festuca</i>	<i>pratensis</i>
Meadow Grasshopper	<i>Chorthippus</i>	<i>parallelus</i>
Meadow Vetchling	<i>Lathyrus</i>	<i>pratensis</i>
Meniscus midge larvae	<i>Chironomids</i>	
Mole	<i>Talpa</i>	<i>europaea</i>
Moorhen	<i>Gallinula</i>	<i>chloropus</i>
Mute Swan	<i>Cygnus</i>	<i>olor</i>
Oak polypore	<i>Piptoporus</i>	<i>quercinus</i>
Oilseed Rape	<i>Brassica</i>	<i>napus</i>
Oxeye daisy	<i>leucanthemum</i>	<i>vulgare</i>
Painted lady	<i>Cynthia</i>	<i>cardui</i>
Pedunculate Oak	<i>Quercus</i>	<i>robur</i>
Pendulous Sedge	<i>Carex</i>	<i>pendula</i>
Perennial Rye Grass	<i>Lolium</i>	<i>perenne</i>
Phantom midge larvae	<i>Chaoborus</i>	<i>crystallinus</i>
Pond skater	<i>Gerris</i>	<i>lacustris</i>
Poplar sp.	<i>Populus</i>	
Primrose	<i>Primula</i>	<i>vulgaris</i>
Rabbit	<i>Oryctolagus</i>	<i>cuniculus</i>
Ragwort	<i>Senecio</i>	<i>jacobaea</i>
Ramshorn snail	<i>Planorbis</i>	<i>planorbis</i>
Rat	<i>Rattus</i>	<i>norvegicus</i>
Red Clover	<i>Trifolium</i>	<i>pratense</i>
Red Deadnettle	<i>Lamium</i>	<i>purpureum</i>
Red Goosefoot	<i>Cheropodium</i>	<i>rubrum</i>
Red oak	<i>Quercus</i>	<i>rubra</i>
Redshank	<i>persicaria</i>	<i>polygonaceae</i>
Red-tailed Bumblebee	<i>Bombus</i>	<i>lapidarius</i>
Reed Mace	<i>Typha</i>	<i>latifolia</i>
Ribwort Plantain	<i>Plantago</i>	<i>lanceolata</i>
Ringlet	<i>Aphatopus</i>	<i>hyerantus</i>
Robin	<i>Erithacus</i>	<i>rubecula</i>
Rosebay Willowherb	<i>Chamerion</i>	<i>angustifolium</i>
Salad Burnett	<i>Sanguisorba</i>	<i>minor</i>
Sawfly	<i>Hymenoptera</i>	<i>tenthredo</i>
Scentless Mayweed	<i>Tripleurospermum</i>	<i>inodorum</i>

Scots Pine	<i>Pinus</i>	<i>sylvestris</i>
Self-heal	<i>Prunella</i>	<i>vulgaris</i>
Silver Birch	<i>Betula</i>	<i>pendula</i>
small skipper	<i>Ochlodes</i>	<i>venatus</i>
small-white	<i>Pieris</i>	<i>rapae</i>
Wych Elm	<i>Ulmus</i>	<i>glabra</i>
Snail	<i>Bithynia</i>	<i>tentaculata</i>
Snowberry	<i>Symphoricarpos</i>	<i>albus</i>
Song Thrush	<i>Turdus</i>	<i>philomelos</i>
Spear thistle	<i>Cirsium</i>	<i>vulgare</i>
Speckled Wood	<i>Pararge</i>	<i>aegeria</i>
Starling	<i>Sturnus</i>	<i>vulgaris</i>
Swallow	<i>Hirundo</i>	<i>rustica</i>
Sweet Chestnut	<i>Castanea</i>	<i>sativa</i>
Swift	<i>Apus</i>	<i>apus</i>
Sycamore	<i>Acer</i>	<i>pseudoplatanus</i>
Tawny Mining Bee	<i>Andrena</i>	<i>fulva</i>
Timothy	<i>Phleum</i>	<i>pratense</i>
Turkey Oak	<i>Quercus</i>	<i>cerris</i>
Upright Brome	<i>Bromus</i>	<i>erectus</i>
Vestal Cuckoo Bee	<i>Bombus</i>	<i>vestalis</i>
Wall Barley	<i>Hordeum</i>	<i>murinum</i>
Water boatman	<i>Notonecta</i>	<i>glauca</i>
Water Dropwort	<i>Filipendula</i>	<i>vulgaris</i>
Water fleas	<i>Daphnia spp</i>	
Weld	<i>Reseda</i>	<i>luteola</i>
White Clover	<i>Trifolium</i>	<i>repens</i>
White Deadnettle	<i>Lamium</i>	<i>album</i>
Wild Cherry	<i>Prunus</i>	<i>avium</i>
Wild Mignonette	<i>Reseda</i>	<i>lutea</i>
Wild Strawberry	<i>Fragaria</i>	<i>vesca</i>
Wood Avens	<i>Geum</i>	<i>urbanum</i>
Wood Dock	<i>Rumex</i>	<i>sanguineus</i>
Wood Pigeon	<i>Columba</i>	<i>livia</i>
Wren	<i>Troglodytes</i>	<i>troglodytes</i>
Yarrow	<i>Achillea</i>	<i>millefolium</i>
Yellow Bristle-grass	<i>Setaria</i>	<i>pumilia</i>



Yellow-flag Iris	<i>Iris</i>	<i>pseudocorus</i>
Yellow-legged Mining Bee	<i>Andrena</i>	<i>flavipes</i>
Yorkshire Fog	<i>Holcus</i>	<i>lanatus</i>

## Appendix B Works undertaken during course of management plan

Works completed from 2017 to 2022 are recorded in the previous version of this management plan, this is only works completed in the current plan. Persons involved is rangers and volunteers unless otherwise specified.

Date	Persons involved	Compartment	Description of work
Feb 23		all	Health and safety tree work
Apr 23			Started stock fence replacement
		all	Replaced worn waymarker posts
			Replaced worn fingerpost at water lane end
May 23			Put type 1 base around troughs ready for cattle
		all	All paths, car park areas strimmed
June 23		all	All paths, car park areas strimmed
July 23		all	All paths, car park areas strimmed
Aug 23			Hedge cut lake loop
			All paths, car park areas strimmed
Sep 23			Repaired broken fencing around grazing paddocks
			Ice house filed strimmed
			Removed collapsed fencing from around copse in Abbey Field
			Replaced stolen gates
Oct 23		all	Health and safety trees completed
			Cut and raked slow worm areas
Nov 23			Cut vegetation overhanging outflow channel
Jan 2024	Rangers		Cleared wind blown trees
March	Rangers		Replaced bollard in car park

April	Rangers		Fencing in Abbey Field
	Rangers		Installed new field gate and kissing gate into Chestnut Field
	Rangers		Digger work in car park + Field gate
May	Rangers		Cut backs across site
July	Rangers		Cut backs across site

## Appendix C Marketing Checklist

<b>KCC COUNTRY PARKS</b>					
<b>EVENT COSTINGS PROFORMA</b> (Please note all information provided on this section of the pro forma will be transposed directly to booking bug for ticket sales and to marketing materials)					
Park					
Lead Officer					
Date Proforma Completed					
Event Name					
Event Date					
Additional Event Date (s) (multiple date events only)					
Event Time	Start (enter time below)	End (enter time below)			
Time slots	Please provide required times slots				
	Start (enter time below)	End (enter time below)			
Space for more detail on time slots					
Event Objective	Income Generation				
Event Short Description (Max 255 characters, this should be a short, snappy, exciting description of the event that will appear on the first page of booking bug to encourage people to look further or make a booking. This will also be used on marketing materials)					

<b>Event Long Description</b> (Max 1000 characters, this should be used to provide further detail on the specifics of the event e.g. what the event is about, what the customer will experience, what is included in the ticket price, age restrictions, parking arrangements, indoor or outdoor, are dogs allowed, any other information the customer might need before booking)						
<b>Maximum Number of Tickets Per Session/Date</b>						
<b>What date are tickets to be made available for sale</b>						
<b>Minimum time before event bookings can be made</b>						
<b>Age Restrictions</b>						
<b>Are children to be accompanied by an adult</b>						
<b>Is this event suitable for babies/toddlers</b>						
<b>Are dogs allowed</b>						
<b>Is this event suitable for people with :</b>	<b>Physical disabilities</b>		<b>If no why</b>			
	<b>Partially sighted</b>		<b>If no why</b>			
	<b>Hearing impaired</b>		<b>If no why</b>			
<b>Has a KCC risk assessment been undertaken? When and by whom?</b>	Yes					
<b>Is booking in advance required?</b>	no	<b>Who will take the bookings?</b>				
<b>Are additional staff resources required?</b>	no	<b>Who?</b>				
<b>Is there any third party involvement?</b>	no	<b>Who?</b>				
<b>Volunteers - will you be using volunteers</b>	no	<b>How many?</b>				
<b>Booking questions needed e.g. name of attendee, age of attendee, meal choices if catering included (please be specific about the information you need from the customers and the</b>	n/a					

relevant booking questions will be built for you)						
Booking questions per booking or per attendee?						
Resources needing to be booked on Booking Bug (e.g., function room, outdoor space)						
What hard copy marketing materials are required (e.g., site posters, external venue posters, flyers)						
What digital marketing materials are required (e.g., social media posts, webpage updates, events listings, Yammer)						
<b>Expected Event Income and Revenue</b>						
The following are subject to VAT		Ticket Price	Quantity	Price including VAT		
Ticket Sales	One Adult			£0.00		
	One Child	£0.00	0	£0.00		
	Family (2+1)	£0.00	0	£0.00		
	Family (2+2)	£0.00	0	£0.00		
	Family (2+3)	£0.00	0	£0.00		
	Concessions (please specify)	£0.00	0	£0.00		
Catering	Food	£0.00	0	£0.00		
	Drink	£0.00	0	£0.00		
Anticipated Parking Income (If outside normal opening hours)	Parking (outside of normal opening hours)	£0.00		£0.00		
Other Revenue (Please specify)		£0.00	0	£0.00		
The following are not subject to VAT						
Room Hire Income (if charged separately to tickets)	Room hire / Outdoor Venue Hire	£0.00	0	£0.00		
Programmes	Programmes	£0.00	0	£0.00		
Other Revenue (Please specify)		£0.00	0	£0.00		
Total				<b>£0.00</b>		
<b>Expected Event Costs</b>		Expected Cost	Quantity	Total expected cost		
Staffing (Please specify job title, hourly rate and number of hours as per example)	<i>e.g. - Casual Events Guru</i>	<i>£9.99</i>	<i>4</i>	<i>£39.96</i>		
				£0.00		
		£0.00	0	£0.00		
		£0.00	0	£0.00		


		£0.00	0	£0.00		
		£0.00	0	£0.00		
Catering				£0.00		
		£0.00	0	£0.00		
Hire of Equipment (please specify)		£0.00	0	£0.00		
3rd Party Costs e.g., event specialists (please specify)		£0.00	0	£0.00		
Events Materials (please specify)		£5.00	1	£5.00		
		£0.00	0	£0.00		
Marketing (please specify)		£0.00	0	£0.00		
Any Other Cost (Please specify)		£0.00	0	£0.00		
Total			0	<b>£0.00</b>		
<b>Expected Profit / Loss on Event</b>	<b>£0.00</b>	<b>Event To Go Ahead?</b>				
<b>Marketing Activity</b>	Responsible person	Date Required	Date Completed and By Whom			
Tickets loaded on to booking bug	BS					
Tickets available for sale	BS					
Hard Copy Marketing Materials Designed and Provided to Lead Officer	BS					
Digital Marketing Materials Designed and Scheduled for Posting	BS					
<b>EVENT EVALUATION</b> (Please note event evaluations must be completed within 7 days of the final date of the event by the named lead officer)						
<b>Actual Event Income and Revenue</b>						
The following are subject to VAT		Price	Quantity Sold	Price excluding VAT		
Ticket Sales	One Adult	£0.00	0	£0.00		
	One Child	£0.00	0	£0.00		
	Family (2+1)	£0.00	0	£0.00		
	Family (2+2)	£0.00	0	£0.00		
	Family (2+3)	£0.00	0	£0.00		
	Concessions (please specify)	£0.00	0	£0.00		
Catering	Food	£0.00	0	£0.00		
	Drink	£0.00	0	£0.00		
Anticipated Parking Income (If outside normal opening hours)	Parking	£0.00	0	£0.00		
Other Revenue (Please specify)		£0.00	0	£0.00		
The following are not subject to VAT						
Room Hire Income (if charged separately to tickets)	Room hire / Outdoor Venue Hire	£0.00	0	£0.00		

Programmes	Programmes	£0.00	0	£0.00		
Other Revenue (Please specify)		£0.00	0	£0.00		
Total			0	£0.00		
<b>Actual Event Costs</b>		Actual Cost	Quantity	Total Actual Cost		
Staffing (Please specify job title, hourly rate and number of hours as per example)	<i>e.g. - Casual Events Guru</i>	£9.99	4	£39.96		
		£0.00	0	£0.00		
		£0.00	0	£0.00		
		£0.00	0	£0.00		
		£0.00	0	£0.00		
		£0.00	0	£0.00		
Catering	Food	£0.00	0	£0.00		
	Drink	£0.00	0	£0.00		
Hire of Equipment (please specify)		£0.00	0	£0.00		
3rd Party Costs e.g. event specialists (please specify)		£0.00	0	£0.00		
Events Materials (please specify)		£0.00	0	£0.00		
Marketing (please specify)		£0.00	0	£0.00		
Any Other Cost (Please specify)		£0.00	0	£0.00		
Total			0	£0.00		
<b>Actual Profit / Loss on Event</b>	#REF!					
<b>Was the event objective met?</b>						
<b>If not, why not?</b>						
<b>Was this event suitable for disabled people?</b>						
<b>If not, why not?</b>						
<b>Did you use Volunteers?</b>						
<b>If yes, how many volunteer hours were provided?</b>						
<b>What would you have done differently?</b>						
<b>Were there any external factors affecting the event?</b>						
<b>What was the weather like on the day?</b>						
<b>What percentage of bookings were made via online systems?</b>						
<b>Were there any comments regarding making bookings via online systems?</b>						
<b>How successful was the marketing for this event?</b>						
<b>Any other comments?</b>						
<b>Are you planning to go ahead with this event next year 2021?</b>						
<b>Completed forms are to be emailed to kentcountryparksbusinesssupport@kent.gov.uk</b>						

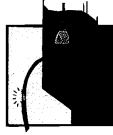


## Appendix D Health and Safety

## KCC Standard Instructions



**Kent County Council**  
Environment & Economy - Country Parks  
Health & Safety - Standing Instructions



ANNUAL CHECKS	JAN	FEB	MAR	APR	MAY	JUN	JUL	AUG	SEP	OCT	NOV	DEC
BUILDING INSPECTIONS	I	X										
COSHH ASSESSMENTS		I	X									
RISK ASSESSMENTS		I	X									
VEHICLES - paperwork to be brought to monthly meetings			I	X								
OCCUPATIONAL ROAD RISK ASSESSMENT (at appraisal)				IX								
TOOLS AND EQUIPMENT INVENTORIES				I	X							
FIRE EXTINGUISHERS					I	X						
ELECTRICAL SAFETY TESTS - FIXED EQUIPMENT - PORTABLE BUILDINGS					I			X				
ELECTRICAL SAFETY TESTS - FIXED EQUIPMENT - PERMANENT BUILDINGS (Every 5 years- 2001/2005/2009)					I			X				
ELECTRICAL SAFETY TESTS - PORTABLE EQUIPMENT (Every 2 years - 2002/2004/2006/2008)					I			X				
PLAY EQUIPMENT							I			X		
CHAINSAW INSPECTIONS									I		X	
WINCHES INSPECTIONS									I		X	
SAFETY HATS									I		X	
TREE INSPECTIONS - P1 every year										I	X	X
P2 every 2 years (2004 / 2006 / 2008)		X								I		
P3 every 3 years (2004 / 2007 / 2010)		X								I		
TRAILER INSPECTIONS										I	X	

Key: I Instruction to be Given X Confirmation of completion due

## Tree Zones

### KCC country parks – Tree inspection policy

Each Country Park will be zoned for tree inspections and the East Kent Head Ranger and North and West Kent Ranger Services Manager will be responsible for producing a zoning map which will be reviewed annually.

The sites that this policy covers are the 9 Country Parks and the 3 Countryside sites that the parks manage on behalf of the KCC estates team. The total land area is approximately 1200 acres.

These sites are:

North Kent area-	Shorne Woods Country Park –	292 acres/116 ha
	Manor Park Country Park-	52 acres/ 21 ha
West Kent area-	Lullingstone Country Park-	494 acres/200 ha
	Trosley Country Park-	170 acres/68 ha
	Teston Bridge Country Park-	32 acres/12 ha
East Kent area-	Brockhill Country Park	
	Pegwell Bay	
	Grove Ferry	
	White Horse Wood	
Countryside sites:	Preston Hill (WK)-	232 acres/94 ha
	Dryhill picnic site (WK)-	22 acres/9 ha Parkwood (EK)

**The zone 1** inspections will be initiated annually by Country Parks management and be competitively tendered to arboricultural experts. The inspection will be carried out in early Autumn. Trees will be individually numbered and a full report submitted with work specifications and priority response times. Areas likely to have a footfall of more than 15 people per day. Zone 1 includes:

Well used assembly points, pedestrian routes, roads, footpaths, buildings, car park, woodland boundary abutting properties and the highway.

**The Zone 2** inspections will be ‘standing instructions’ that are initiated by the country parks Business support team. The inspections will be carried out by park staff trained to LANTRA basic tree inspection course level or above.

This will be a zoned survey utilising the compartment and sub compartments that the Country Parks have. Each compartment will be inspected and any areas with a likely footfall of between 5 and 15 per day will be checked.

A form will be completed for each tree or group of trees that have works carried out on them. A separate form will be kept for trees requiring ongoing monitoring.

**The Zone 3** inspections will be ‘standing instructions’ that are initiated by the country parks Business support officer. The inspections will be carried out by park staff trained to LANTRA basic tree inspection course level or above.

A form will be completed for each tree or group of trees that have works carried out on them. A separate form will be kept for trees requiring ongoing monitoring.

**Priority (time scale to do works)**

**1 – 24 hours**

**2 – 3 months**

**3 – 6 months**

Zone	Criteria	Inspection frequency	By whom
Zone 1 (red) (High Risk)	All areas bounded by roads, car parks, buildings, play areas and paths with a footfall greater than 15 persons per day	Annual inspection	Country Parks tree inspector
Zone 2 (Amber) Medium risk	All paths/bridle ways/land with a footfall greater than 5 persons but less than 15 persons per day	Ground based Inspection every 3 years	By Rangers
Zone 3 (green) Low risk	All paths/land with a footfall of less than 5 persons per day	Ground based Inspection every 5 years	By Rangers
All zones (no Colour)	All	AFTER SEVERE STORMS	By Rangers

*MANOR PARK COUNTRY PARK - WARDEN'S CHECK LIST*

WARDEN ON DUTY: \_\_\_\_\_  
 COMMENCING: \_\_\_\_\_

WEEK \_\_\_\_\_

<b>Items to check</b>	<b>Frequency</b>	<b>Checked as satisfactory ✓ or n/a</b>	<b>Actions carried out and any issues identified</b>
Clear rubbish from car park, and other heavily used areas.	Daily		
Clean toilets and maintain consumables.	Daily		
Empty Dog Bins	Daily		
Check buildings for broken glass/ visual damage.	Daily		
Check cattle health and wellbeing report problems to countryside officer.	Daily		
Check water troughs are full, working and clean. If frozen crack ice.	Daily		
Empty pay and display machine and fill out weekly banking sheet.	Daily		
Bank Money from Car Parking	Weekly		
Check fences for damage and effectiveness especially when stock are present.	Weekly		
Check play area for damage and safety of play equipment.			
Check other grass areas for dangerous objects/litter and remove.	Weekly		
Check for damage to buildings, fences, notices, trees etc. effect minor repairs or report to Countryside Officer as necessary.	Weekly		
Check toilet buildings. Ensure secure fixture of all fittings (sinks, gutters, etc.).	Weekly		
Check overhead barrier for damage and safe operation.	Weekly		
Empty bins and prepare rubbish for collection.	Weekly		
Check lakeside structures, bridges, swims for structural defects.	Weekly		

Check water levels.	Weekly		
Check stability of banks, look for signs of erosion.	Weekly		
Check life belts and ropes.	Weekly		
Check gates and stiles for structural defects/ automatic closing.	Monthly		
Check picnic tables for structural defects, effect minor repairs or report to Countryside officer as necessary	Monthly		
Check silt levels of stream and check around bridge that it is not blocked.	Monthly		
Keep poisonous plants cut back from paths. Alert public to risk.	Seasonal		
Break ice at edge of lake to prevent access.	Seasonal		
Erect warning signs.	(Winter)		
Check for fallen trees/ branches etc. Remove if possible or report to CO.	Seasonal (After heavy winds)		

This sheet is to be left in the office for collection on a Monday morning every week. Thanks.

#### Play area specific checks

Items to check	Frequency	Checked as satisfactory ✓ or n/a	Actions carried out and any issues identified
Check for litter and sharp objects and remove	Daily		
Check all timber structures for damage, decay, loose fittings, splinters, cracks bigger than 9mm wide, tightness of nuts and fittings.	Weekly		
Check all components for any protrusion or sharp edges.	Weekly		
Check slide for damage or any rough or loose metal.	Weekly		

Check swings and climbing frame for wear on brass-coloured bearings and wear on bearings themselves. Check also for any wear on chain links.	Weekly		
Check all swing seats for wear or damage.	Weekly		
Check fences/gates for holes, damage, sharp wire etc. and for automatic closing.	Weekly		
Check 'No Dogs' signs present.	Weekly		
Check surrounding area for poisonous plants.	Weekly		
Check tightness of exposed nuts and fittings.	Monthly		
Check foundations are secure.	Monthly		
Notify CO if hedge grows out over play area.	Monthly		



17.10 Risk Assessment- There are over 50 of these so this is an example of one

## KCC Risk Assessment Form – The 5 Steps Approach



<b>Activity / Operation/ Event: Hand cutting tools - bowsaws, loppers, slashers, billhooks, axes, hand cycles, secateurs.</b>	<b>Assessment Date: 17/06/23</b>
<b>Establishment: Kent Country Parks.</b>	<b>Review Date: 17/06/25</b>

Step 1	Step 2	Step 3	Risk Rating	Step 4		Step 5 Action & Review	
Identify the hazards	Who might be harmed & how?	What are you already doing?	Trivial/ low / medium  / high / stop	Is anything further needed?	Action required	Responsible person	Date completed
Bowsaw  The saw blade	User of tool, visitors, other works. Crush, blows to head and limbs, cuts and lacerations.	Providing training on how to use the tool, safe use of tools, using appropriate PPE (gloves ( <i>when needed and correct</i> ), steel toe cap boots,	Medium	Supervision of students/ volunteers  Work with another person to help when needed. Give direction and support	Supervision of students, volunteer	Rangers	





---

		yellow vest, hard hat while in felling areas)					
loppers	User of tool, visitors, other works. Crush, blows to head and limbs, cuts and lacerations.	Providing training on how to use the tool, safe use of tools. using appropriate PPE (gloves ( <i>when needed and correct</i> ), steel toe cap boots, yellow vest, hard hat while in felling areas)	Medium	Be aware of anyone under the branch or stem being cut.			

Slashers, bill hooks, hand cycles, axes, shears	User of tool, visitors, other works. Crush, blows to head and limbs, cuts and lacerations.	Providing training on how to use the tool, safe use of tools. using appropriate PPE (gloves ( <i>when needed and correct</i> ), steel toe cap boots, yellow vest, hard hat while in felling areas)		Stay at least 2 clear tool lengths from others while using the tool. <b>Use tool correctly do not muck about – Keep tool sharp</b>			
Secateurs	User of tool, visitors, other works. Crush, cuts and lacerations.	Providing training on how to use the tool, safe use of tools. using appropriate PPE	Low	Be aware of anyone under the branch or stem being cut.			

**Assessor Name(s): Kevin Jennings**

**Job Title: Ranger**

---

<b>Signature: KJ</b>	<b>Review Date:17/06/23</b>
----------------------	-----------------------------

<b>Step 1</b> <b>What are the hazards?</b>	<b>Step 2</b> <b>Who might be harmed and how?</b>	<b>Step 3</b> <b>What are you already doing?</b>	<b>Risk rating</b>	<b>Step 4</b> <b>Is anything further needed?</b>	<b>Step 5</b> <b>Action &amp; Review</b>
-----------------------------------------------	------------------------------------------------------	-----------------------------------------------------	--------------------	-----------------------------------------------------	---------------------------------------------

<p>Spot hazards by:</p> <ul style="list-style-type: none"> <li>walking around your workplace</li> <li>asking those doing the task what they think</li> <li>checking manufacturers' instructions</li> <li>considering health hazards</li> </ul>	<p>Identify groups of people, consider:</p> <ul style="list-style-type: none"> <li>employees</li> <li>temporary / agency staff</li> <li>contractors</li> <li>volunteers</li> <li>members of the public</li> <li>children (including work experience)</li> <li>lone workers</li> <li>pupils</li> <li>service users</li> </ul>	<p>List what is already in place to reduce the likelihood of harm or make any harm less serious, examples include:</p> <ul style="list-style-type: none"> <li>guarding</li> <li>training</li> <li>procedures, safe systems of work</li> <li>personal protective equipment (PPE)</li> </ul>	<p>Trivial, low, medium, high or stop (please see matrix below)</p>	<p>You need to make sure that you have reduced risks 'so far as is reasonably practicable'.</p> <p>An easy way of doing this is to compare what you are already doing with good practice. If there is a difference, list what needs to be done.</p>	<p>Remember to prioritise. Deal with those hazards that are high-risk and have serious consequences first.</p> <p>List:</p> <ul style="list-style-type: none"> <li>actions required</li> <li>who needs to do them?</li> <li>by when</li> <li>Check actions completed</li> </ul>
------------------------------------------------------------------------------------------------------------------------------------------------------------------------------------------------------------------------------------------------	------------------------------------------------------------------------------------------------------------------------------------------------------------------------------------------------------------------------------------------------------------------------------------------------------------------------------	--------------------------------------------------------------------------------------------------------------------------------------------------------------------------------------------------------------------------------------------------------------------------------------------	---------------------------------------------------------------------	-----------------------------------------------------------------------------------------------------------------------------------------------------------------------------------------------------------------------------------------------------	---------------------------------------------------------------------------------------------------------------------------------------------------------------------------------------------------------------------------------------------------------------------------------

**Risk rating**

	<b>Slightly harmful</b>	<b>Harmful</b>	<b>Extremely harmful</b>
--	-------------------------	----------------	--------------------------

**Risk rating**

	<b>Slightly harmful</b>	<b>Harmful</b>	<b>Extremely harmful</b>
<b>Highly unlikely</b>	<b>Trivial risk</b>	<b>Low risk</b>	<b>Medium risk</b>
<b>Unlikely</b>	<b>Low risk</b>	<b>Medium risk</b>	<b>High risk</b>
<b>Likely</b>	<b>Medium risk</b>	<b>High risk</b>	<b>STOP</b>

<b>Risk level</b>	<b>Action and Timescale</b>
<b>Trivial</b>	<b>No action required and no documentary record needs to be kept.</b>

<b>Low</b>	<b>No additional physical control measures are required, however monitoring is necessary to ensure that the controls are maintained.</b>
<b>Medium</b>	<b>Efforts should be made to reduce the risk and the reduction measures should be implemented within a defined period. Where the medium risk is associated with extremely harmful consequences, further assessment may be necessary to establish more precisely the likelihood of harm as a basis for determining the need for improved control measures.</b>
<b>High</b>	<b>Work should not be started until the risk has been reduced to an acceptable level. Considerable resources may be allocated to reduce the risk. Where the risk involves work in progress, urgent action should be taken.</b>
<b>Stop</b>	<b>Work should not be started or continued until the risk has been reduced to an acceptable level. If it is not possible to reduce risk even with unlimited resources, work has to remain prohibited.</b>



## 9.2 Plain Text English Format (Accessible Alternative)

This relates to the visual represented on [Page 16](#).

- Corporate director of Growth, Environment and Transport
  - Head of Countryside, Leisure and Sport
  - Head of Strategic Planning, Enforcement and Policy
  - Head of Service Country Parks and Countryside Partnerships
  - Operations Manager Country Parks
    - Business Support
    - North and West Kent Ranger Services Manager
      - 2 Senior Rangers (1 NK and 1 WK)
      - 2 Countryside Rangers (2 NK and 1 WK)
      - 3 Assistant Rangers (2 NK and 2 WK)
        - 11 Countryside Wardens (2 at each site)
    - East Kent Head Ranger
      - 1 Countryside Ranger
        - 6 Countryside Wardens (2 at each site)
    - Café Manager

- Café Supervisors at Manor Park, Shorne, Lullingstone and Trosley
- Pool of Casual Catering Staff
- Visitor Services Manager
  - 4 Visitor Services and Events Officers based at Shorne, Lullingstone, Trosley and Brockhill
  - Pool of assistant visitor services and event officers
- Education Manager
  - 4 Education Rangers based at Shorne, Lullingstone, Trosley and Brockhill
  - Pool of casual education rangers