

Kent Resource Partnership

Annual Report – 2019/20





For general enquiries or if in doubt as to whom to contact for any of the 13 Kent councils:-

Paldeep Bhatti, Kent Resource Partnership Manager,
c/o Sevenoaks District Council,
Argyle Road, Sevenoaks, Kent, TN13 1HG
Tel: 01732 227128
Email: paldeep.bhatti@kentrp.org.uk

www.kent.gov.uk/krp

Contents

Foreword	4
Background	5
Performance	6
COVID-19	9
Resource & Waste Strategy	11
Engaging residents	12
Working together against waste crime	17
Where does our recycling & waste go?	19
KRP Conference	20
Further Information & Contact Details	21



Foreword



*Cllr Nicholas Kenton
Chairman of KRP &
Cabinet Member for Planning & Regulatory Services,
Dover DC*

This year has been truly unique. We've all been impacted by the COVID-19 pandemic with many of us having our lives turned upside down almost overnight. As a collective of councils we have had to consider risks, be flexible and take proactive action to deliver vital frontline services which have remained a constant throughout lockdown, where it was safe to do so.

As well as the continued challenge of delivering services during the COVID-19 pandemic, the 13 Kent councils which make up the Kent Resource Partnership (KRP) have also worked on the following notable actions: - communicating regularly with our residents on key issues such as promoting reuse, encouraging the reduction of waste, maximizing recycling options as well as contributing to local and national anti-litter campaigns. We have combined forces to tackle fly tipping and place intelligence at the heart of our approach. We have also worked with key partners within the resource & waste industry to respond to numerous Government consultations which will shape future direction.

With official data expected later this year by Government, we can give an early indication on our performance for 2019/20. In total, the 13 Kent councils handled over 730,000 tonnes of household waste. Kent's residual waste was 528.6kg per household. This fell just over 6kg per household compared to the previous year. Our recycling and composting was 46.7%. While this has decreased slightly compared to the previous year, we anticipate this to go back up as improved services for Tonbridge & Malling BC and Tunbridge Wells BC settle and also with many residents at home during the pandemic. 51.8% of Kent's household waste was used to generate energy with as little as 1.5% going to landfill.

As always, if there are any questions on the report or would like to find out more about the partnership, please contact the Kent Resource Partnership Manager, Paldeep Bhatti. His email address is Paldeep.Bhatti@kentrp.org.uk and phone number is 01732 227128.

Background

The Kent Resource Partnership (KRP) is made up of the 13 Kent councils.

These are:- Ashford Borough Council, Canterbury City Council, Dartford Borough Council, Dover District Council, Folkestone & Hythe District Council, Gravesham Borough Council, Kent County Council, Maidstone Borough Council, Sevenoaks District Council, Swale Borough Council, Thanet District Council, Tonbridge & Malling Borough Council and Tunbridge Wells Borough Council.

The purpose of the KRP is to deliver the following three strategic objectives:-

1. Deliver the Kent Joint Municipal Waste Management Strategy (KJMWMS). This Strategy was first adopted in 2007 to manage Kent's municipal waste. It has since been refreshed in 2017/18 to cover the period up to 2020;
2. Deliver financial and performance benefits to Kent taxpayers; and manage risks to finance and performance as appropriate; and
3. Contribute to, and set a national lead, in delivering projects that manage supply chain issues in the leanest and most effective ways; securing value from discarded materials; and proactively identifying innovation and excellent practices.



Performance

Subject to Government validation later this year, our performance for 2019/20 generally aligns with targets outlined with our strategy. The residual household waste per household figure was **528.6kg/h'hold** – an improvement to the previous year. 46.7% of household was recycled & composted, **51.8%** to generate energy with only **1.5%** sent to landfill.

Table 1: NPI 191 – Residual Household Waste per Household (kg/h'hold)

Council	2013/14	2014/15	2015/16	2016/17	2017/18	2018/19	2019/20	% Decrease (over seven years)	Perf. (compared to previous year)
Ashford Borough Council	441.4	350.6	370.4	354.3	327.2	359.5	352.2	-20.2%	-7.3
Canterbury City Council	433.6	425.0	465.2	460.1	470.5	443.9	427.7	-1.4%	-16.3
Dartford Borough Council	626.0	598.6	618.5	634.3	619.2	605.4	607.9	-2.9%	2.5
Dover District Council	364.6	373.7	394.4	374.8	343.6	354.4	356.5	-2.2%	2.1
Folkestone & Hythe District Council	442.7	416.4	414.0	422.1	400.2	373.6	401.0	-9.4%	27.4
Gravesham Borough Council	567.4	497.7	483.9	512.2	431.7	432.2	427.5	-24.7%	-4.7
Maidstone Borough Council	443.4	424.2	441.5	420.7	403.6	403.3	410.0	-7.5%	6.7
Sevenoaks District Council	589.5	596.3	596.1	567.4	558.9	553.2	554.3	-6.0%	1.1
Swale Borough Council	519.5	491.3	520.0	498.6	490.3	489.9	512.3	-1.4%	22.4
Thanet District Council	473.1	468.9	483.9	475.7	452.5	437.7	466.1	-1.5%	28.4
Tonbridge and Malling Borough Council	553.8	556.7	569.0	563.1	548.3	548.6	487.0	-12.1%	-61.6
Tunbridge Wells Borough Council	526.9	515.8	523.2	479.2	471.2	456.2	430.0	-18.4%	-26.2
KRP	580.0	567.3	584.5	567.0	540.9	535.3	528.6	-8.9%	-6.7

Source: Waste Data Flow (provisional figures for 2019/20 and are subject to slight change. Final figures, including national figures, to be published by Defra at the end of 2020).

Table 1 (above) shows residual waste decreasing per household. We are pleased to report that since 2013/14, our residual waste per household tonnage has seen a percentage decrease of 8.9%.

Some of the reasons for this include us aligning our recycling & waste services so they are more consistent across Kent; partners across the resource industry making changes to their businesses (e.g. packaging manufacturers removing unnecessary packaging) as well as residents becoming increasingly environmentally aware of their behaviours and taking action.

Given we all are accountable in reducing our carbon footprint, we remain committed to reducing residual waste annually working with our residents, the Government and the resource industry.

Table 2: NPI 192 – Percentage of Household Waste Recycled & Composted

Council	2013/14	2014/15	2015/16	2016/17	2017/18	2018/19	2019/20	% Increase (over seven years)	Perf. (compared to previous year)
Ashford Borough Council	41.9%	55.3%	53.1%	55.1%	56.6%	53.4%	54.2%	29.4%	0.8%
Canterbury City Council	48.5%	48.4%	43.2%	44.4%	43.5%	46.3%	45.7%	-5.8%	-0.6%
Dartford Borough Council	26.6%	27.6%	25.6%	25.2%	25.2%	25.9%	24.3%	-8.6%	-1.6%
Dover District Council	44.2%	42.4%	41.7%	44.7%	47.3%	47.0%	47.1%	6.6%	0.1%
Folkestone & Hythe District Council	44.6%	47.6%	44.0%	42.5%	45.3%	48.0%	44.2%	-0.9%	-3.8%
Gravesham Borough Council	24.5%	34.2%	35.0%	34.5%	40.7%	42.2%	42.5%	73.5%	0.3%
Maidstone Borough Council	46.6%	49.1%	47.8%	49.9%	51.1%	51.4%	49.2%	5.6%	-2.2%
Sevenoaks District Council	32.8%	33.4%	31.9%	38.3%	38.1%	37.5%	38.0%	15.9%	0.5%
Swale Borough Council	34.2%	40.3%	36.9%	41.6%	41.2%	42.7%	40.5%	18.4%	-2.2%
Thanet District Council	30.3%	33.9%	31.6%	33.8%	34.9%	36.3%	34.5%	13.9%	-1.8%
Tonbridge and Malling Borough Council	43.1%	42.4%	41.5%	42.5%	41.7%	41.9%	46.4%	7.7%	4.5%
Tunbridge Wells Borough Council	46.3%	46.7%	45.6%	49.1%	48.4%	47.8%	50.2%	8.4%	2.4%
KRP	43.6%	45.6%	44.1%	46.3%	46.7%	47.2%	46.7%	7.1%	-0.5%

Source: Waste Data Flow (provisional figures for 2019/20 and are subject to slight change. Final figures, including national figures, to be published by Defra at the end of 2020).

Table 2 (above) reflects our recycling & composting performance over the last seven years. For 2019/20, we recycled 46.7% - a decrease of 0.5% points compared to the previous year. Since 2013/14, our recycling & composting performance has seen a percentage increase of 7.1%.

In September 2019, Tonbridge & Malling BC and Tunbridge Wells BC implemented its new recycling & waste services. Data outlined in Table 2 shows a marked improvement for both councils, with Tunbridge Wells BC recycling over 50% for the first time.

With our overall recycling being 46.7% this year, it demonstrates performance is not guaranteed year on year. Therefore we continue to work together with our residents to reduce, reuse and recycling as much as we can.



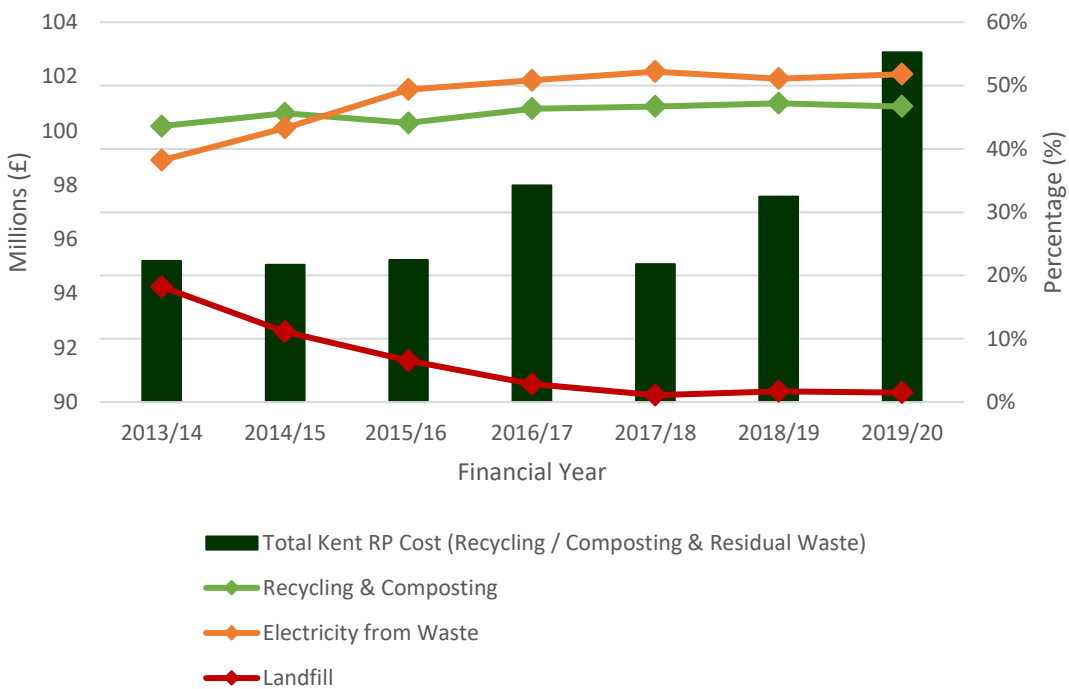
Table 3: NPI 193 – Percentage of Municipal Waste sent to Landfill

Council	2013/14	2014/15	2015/16	2016/17	2017/18	2018/19	2019/20	% Decrease (over seven years)	Perf. (compared to previous year)
County Wide Total	18.2%	11.1%	6.5%	2.8%	1.1%	1.7%	1.5%	-91.8%	-0.2%

Source: Waste Data Flow (provisional figures for 2019/20 and are subject to slight change. Final figures, including national figures, to be published by Defra at the end of 2020).

Table 3 (above) shows the amount of household waste sent to landfill over the last seven years. For 2019/20, we accomplished a 98.5% landfill diversion rate. The total amount has decreased every so slightly compared to the previous year. We continue to aim to maintain these extremely high levels of performance for the good of our environment. Over this period, the amount of sent to landfill has seen a percentage decrease of 91.8%.

Table 4: Overall KRP Performance vs Cost – 2012/1 to 2019/20



Source: Waste Data Flow & the 13 Kent councils

Table 4 (above) shows our total cost of waste resource against performance over the last seven years. It can be seen that the total cost of waste resource managed for 2019/20 was over £102million. For 2019/20, on average this equates to £158 per household, per year. Breaking this down further, that’s an average cost of £3 per household, per week.

Just over £15million was also invested in keeping Kent clean.

COVID-19

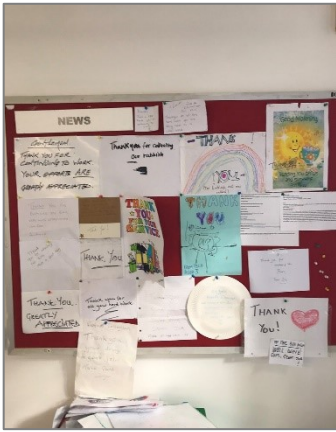
In March 2020, we were all impacted by the COVID-19 pandemic and for many of us our lives were turned upside down almost overnight. As a collective of councils we had to swiftly ensure vital frontline services remained a constant throughout lockdown, where it was safe to do so.

Working together is the norm for us as councils but particularly during this pandemic, it was a key strength. We were quick to identify processes which allowed us to manage the immediate risks during the national lockdown while delivering essential services to our residents. This included Kent-wide daily operational updates, weekly virtual meetings to assess emerging issues as well as reporting back to Government our experiences on a regularly basis.

During the national lockdown, we experienced an overwhelming amount of appreciation from residents to our frontline staff. This provided many of our recycling, waste and street cleansing staff with a boost to serve our residents in this particularly challenging time.

As the country looks to eradicate COVID-19, we continue to monitor the threat of the virus and aim to do what we can to deliver the best recycling, waste and street cleansing services to our residents.





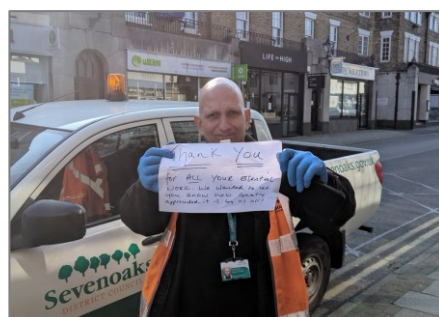
Dear Binmen,
We just wanted to write you a note to say thankyou for taking our rubbish and still going to work! We really appreciate you!

To all our wonderful refuse and recycling collectors
A big thank-you for the wonderful job you do for us, especially in this crisis.
Please take good care of yourselves and keep safe. Good luck!



Dear Dustys
Thank you for working during this scary time.
Please take care and stay safe!

To the lovely bin-collectors of Staplebury
Thank you so much for working so hard for us all. We really appreciate it!! xxxxx

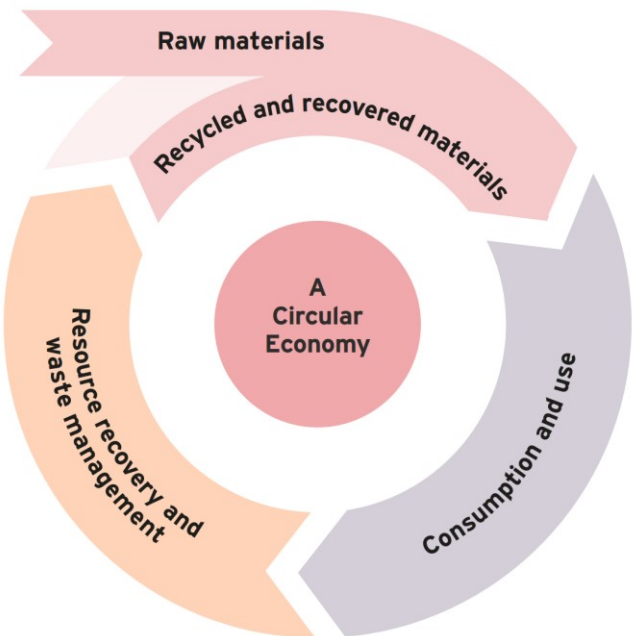


Resource & Waste Strategy

Last year the Government published its Resource & Waste Strategy for England. The strategy sets out how the Government proposes to ‘preserve material resources by minimizing waste, promoting resource efficiency and moving towards a circular economy in England.’ Some of the key ambitions included: businesses & manufacturers to pay the full cost of recycling or disposing of their packaging waste, exploring the possibility of a deposit return scheme, introducing plans for a consistent approach to household recycling across England and placing a tax on plastics packaging. In 2019, Government engaged and consulted on all of these key areas. Working closely with the resource & waste industry, we responded to all of these Government consultations.

Since then, the Government have taken a further step forward launching two more consultations; a second consultation on placing a tax on plastics packaging (August 2020) and a consultation on its Waste Management Plan for England (October 2020). We have worked together to understand how best we ought to respond, as well as engaging with other local authorities and the wider resource & waste industry.

In order to keep a track on timelines outlined within the Government’s Resource & Waste Strategy, further consultations are expected in early 2021.



Source: Image from Government’s Resource & Waste Strategy. Full document [here](#).

Engaging residents

A continued focus for us has been engaging regularly with our residents. Our communications campaigns this year has seen us focus on: - signposting residents to hints and tips on how to reduce or reuse waste, highlighting what household items are recyclable, empowering residents to help their local communities take part in litter picks as well as educate residents on their responsibilities when it comes to disposing of waste, especially to avoid fly tipping.

Here’s a snapshot of campaigns delivered, including key outcomes: -

September 2019: Recycle Week

Similar to previous years, we have supported ‘Recycle Week’. Led by WRAP, we worked with many key stakeholders across the resource industry to shine a light on the importance of recycling. We held a number of local events as well as supported #RecycleWeek via our social media platforms. **It was estimated just under 42,000 accounts had been reached on social media with a total of 129,000 impressions gained.**



October 2019: Pumpkin Rescue

This seasonal campaign saw us encourage residents to take part in #PumpkinRescue to help reduce the millions that are binned every Halloween. This included providing residents with helpful advice and recipes reducing pumpkin food waste, as well as encouraging residents to use their food recycling caddies where possible. Led by Hubbub, this national campaign has been delivered for the last five years – we plan to continue to support in the future.

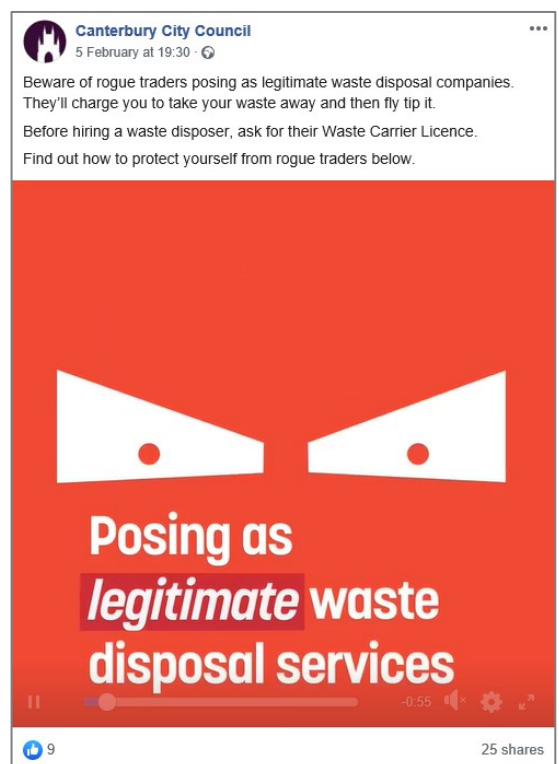
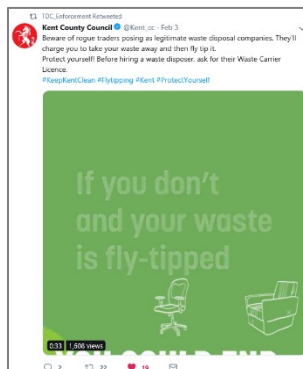
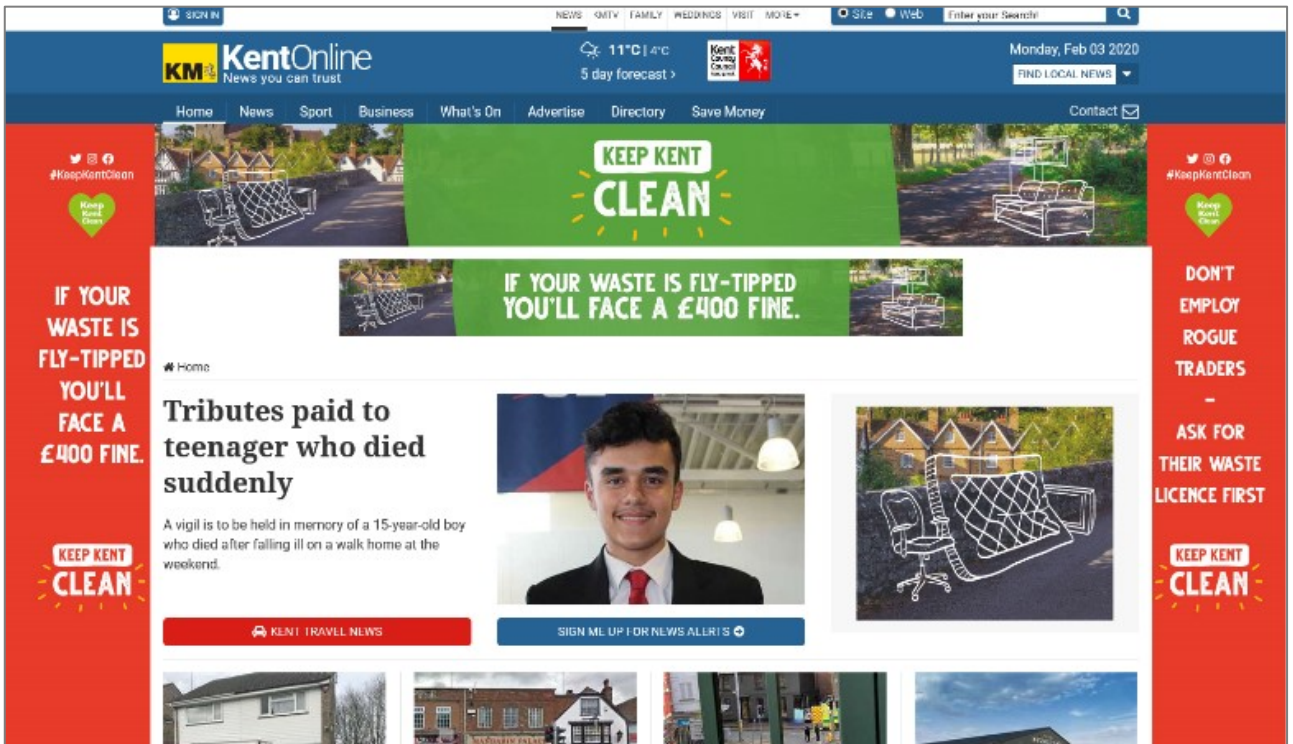
October 2019 and February 2020: Keep Kent Clean (fly-tipping)

With additional financial support from Kent CC, we set aims to tackle waste crime across the county by educating our residents on their 'duty of care'.

The #KeepKentClean campaign was delivered over two phases throughout the year. The campaign looked to raise awareness of the impacts of fly tipping to the County, along with equipping our residents with helpful hints and tips they may need when disposing of waste responsibly.

The campaign included: - posters, bus advertising, press features on Kent Online, a range of short films, animations and infographics for social media. During the first phase in October 2019, it was estimated that just over 140,000 accounts had been reached on social media with a total of 708,000 impressions gained.





The outcomes from the #KeepKentClean campaign in February 2020 were: -

- 699,000 accounts reached;
- 1,536,000 impressions;
- 186 comments;
- 1,233 likes/shares/retweets; and
- 64,000 views.

February 2020: Remember your reusable!

Following national TV programmes such as BBC's 'War on Plastics', we recognized more could be done to shine a light on how residents could incorporate reusable plastic items within their daily lives. As part of our week-long campaign, we created a social media competition where lucky winners had the chance to win:- a chilly's reusable water bottle, a Keep Cup, bees wax wrap and a reusable bag.

Based upon evaluating #KentReuses, key outcomes for the campaign were:-

- 135,000 accounts reached;
- 324,000 impressions;
- 1,900 comments;
- 1,300 likes
- 415 shares



KentOnline
News you can trust

9°C | 1°C
5 day forecast >

Home News Sport Business What's On Advertise Directory Save Money

Home > Features > Reusable Goody Bags

WIN PRIZES

WIN 1 OF 20 REUSABLE GOODY BAGS

Competition details

Kent councils are giving away 20 reusable goody bags to local residents to promote sustainable alternatives to single-use plastics. Each goody bag contains one Chilly's bottle, one KeepCup and a set of Beeswax wraps, together worth over £50 rrp!! All you need to do is enter your details below and you'll be entered into our prize draw.

About the competition

This competition is part of a wider campaign by local Kent councils to reduce plastic pollution. The remember your reusable initiative aims to promote the use of sustainable coffee cups, water bottles and bags in Kent by celebrating the reusable culture we shared in the UK before the advent of single-use plastics in the late 1950s.

JUST POP YOUR DETAILS BELOW TO ENTER THE PRIZE DRAW

WORTH OVER £50



Keep Kent Clean (Litter)

Throughout the year, we have worked with our Parish & Town councils, local communities and willing volunteers to help Keep Kent Clean. This has included providing volunteers with litter picking equipment and carrying out deep cleans in areas where needed.

Due to COVID-19, the national Great British Spring Clean, led by Keep Britain Tidy was postponed in March 2020. As lockdown restrictions have eased, we took part in the rearranged national campaign in September 2020.



Working together against waste crime

We continue our fight against waste crime, to help keep Kent clean and this year has been no different. As we make rapid progress in developing an intelligence-led culture across all 13 Kent councils, we have strengthened our strategic relationships with Kent Police (Rural Team), the Environment Agency and the National Farmers Union (NFU).

At the start of 2019/20, Kent CC budgeted £250k to tackle waste crime. In addition to funding the #KeepKentClean communications campaign – summarised on page 13 & 14 – funding was also used to purchase covert cameras which were placed in hot spot areas; deliver training to local businesses to make them aware of their responsibilities; resource Kent Police colleagues to support councils' 'Operation Assist' days of action and start engagement with local courts via the Magistrates Association.

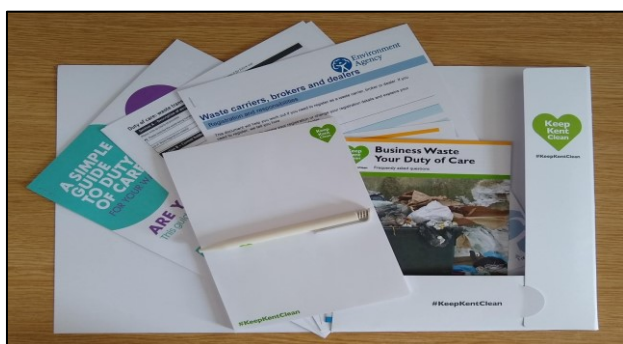
Operation Assists

An Operation Assist is a 'day of action' to tackle waste crime. It's led by councils' enforcement officers, supported by Kent Police and underpinned by latest intelligence.

Key outcomes from 2019/20 are: -

- 37 Operation Assists took place;
- 289 intelligence briefings produced;
- 283 vehicles were stopped & searched;
- 33 fixed penalty notices issued; and
- 38 vehicles seized.





Educating local businesses

Over the past year we also developed a number of waste courses tailored for local businesses. The aim was to educate them of their responsibilities when disposing of their waste. Before the national lockdown, these courses were delivered across the County.

Given the COVID-19 restrictions we've have looked at ways of educating businesses on a larger scale and will be developing an e-learning course. This has been seen as good practice and a welcome approach from Government.

Working with the local courts

In August 2020, we wrote a letter to the Magistrates Association. The letter outlines the detrimental impacts waste crime was having on our County; the perceived gap in meaningful punishment when offenders were taken to court; and a set of recommendations which encouraged us to work closer together to reduce fly tipping.

Whilst we await a formal response from the Magistrates Association, the issue was gained good coverage with local media, as well as trade press. This particular issue also sparked other councils to take action too.

resource

Sharing knowledge to promote waste as a resource

NEWS

MATERIALS

BUSINESS

GOVERNMENT

RESOURCES

SEARCH

Search

ECOMONDO

THE GREEN TECHNOLOGY EXPO

Organized by

ITALIAN EXHIBITION GROUP

Pioneering the future

BUSINESS

WASTE CRIME

KENT RESOURCE PARTNERSHIP CALLS FOR STRONGER FLY-TIPPING PENALTIES

By Rob Cole | 26 August 2020 | Add a Comment

PRINT

E-MAIL

SHARE

Kent Resource Partnership (KRP) has written to the Magistrates Association to call for stronger punishment for fly-tippers after the county spent £1 million cleaning up dumped waste and carrying out investigations.

KentOnline

News you can trust

11°C | 8°C

5 day forecast >

Home

News

Sport

Business

What's On

Education

Directory

Jobs

Homes

Kent councils call on magistrates to hand down harsher punishments to fly-tippers

KENT TRAVEL NEWS

SIGN ME UP FOR NEWS ALERTS

By Rhys Griffiths rgriffiths@thekmggroup.co.uk

Read all comments | 13

Published: 11:33, 25 August 2020 | Updated: 11:52, 25 August 2020

Councils are urging magistrates to come down harder on fly-tippers who end up in court.

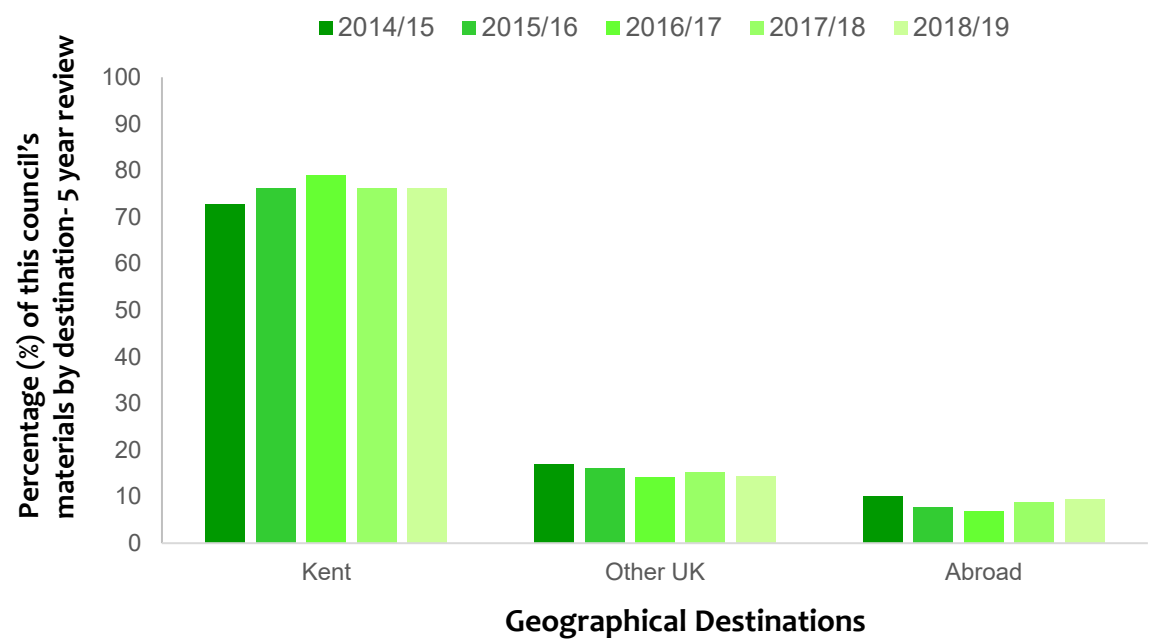
Writing to the Magistrates Association, 13 Kent councils have demanded clearer understanding of how sentences are determined and what can be done to achieve harsher punishments for offenders.

Where does our recycling & waste go?

In March 2020, we published our Materials End Destinations Publication for 2018/19. This was the 8th publication in as many years. The publication provided residents with details as to what happens to our recycling & waste once it leaves their doorstep, particularly focusing on where materials were reprocessed.

The graph below provides an insight into where Kent’s materials are sent for processing across a five year period. We are proud to share that the huge majority of our tonnage consistently remains in Kent. Full details, including a breakdown by council-by-council, can be found:-

https://www.kent.gov.uk/_data/assets/pdf_file/0019/105517/Kent-Resource-Partnership-Materials-End-Destinations-Publication-2018-19.pdf



Members & Officers Site Visit

In November 2019, we took a site visit to Smurfit Kappa’s Paper Mill which is in Snodland, Kent. This visit enabled us to see first hand the process taken to recycle Kent’s paper & card. The paper mill processed approximately 6,000 tonnes of paper & card in 2018/19.

KRP Conference

In September 2019, just under 100 delegates from across the resource and waste industry attended the KRP's Annual Conference. The overarching theme of the conference was how can we engage with residents to change their attitude towards waste. The conference was therefore titled, 'How can we nudge citizens to see waste as a resource?'

Delegates were fortunate to receive presentations from high quality speakers such as:- Sam Reeve, Resource Futures; Victoria Hutchin, WYG; Stephen Bates, Envirocomms; Jane Bevis, OPRL Ltd; Tracy Sutton, Root Innovation; and James Skidmore, Sainsbury's.

The day provided an opportunity for colleagues from across the industry to come together and discuss best practice in behaviour change principles, among many other waste and recycling topics. The conference was also followed on social media using the #KRPCConf. It was estimated over 17,000 accounts were reached on the day.



Further information & contact details

KRP Members Board and senior managers (as at time of print);

Ashford Borough Council	Cllr Andrew Buchanan	Tracey Butler
Canterbury City Council	Cllr Neil Baker	David Ford
Dartford Borough Council	Cllr Steve Brown	Sheri Green
Dover District Council	Cllr Nicholas Kenton	Roger Walton
Folkestone & Hythe District Council	Cllr Stuart Peall	Roger Walton
Gravesham Borough Council	Cllr Lee Croxton	Stuart Alford
Kent County Council	Cllr Susan Carey	David Beaver
Maidstone Borough Council	Cllr Derek Mortimer	Jennifer Shepherd
Sevenoaks District Council	Cllr Margot McArthur	Adrian Rowbotham
Swale Borough Council	Cllr Tim Valentine	Martyn Cassell
Thanet District Council	Cllr Steve Albon	Gavin Waite
Tonbridge & Malling Borough Council	Cllr Robin Betts	Robert Styles
Tunbridge Wells Borough Council	Cllr Matthew Bailey	Gary Stevenson

Website: www.kent.gov.uk/krp

For general enquiries or if in doubt as to whom to contact for any of the 13 councils:

Paldeep Bhatti, Kent Resource Partnership Manager,
c/o Sevenoaks District Council,
Argyle Road, Sevenoaks, Kent, TN13 1HG,
Tel: 01732 227128
Email: paldeep.bhatti@kentrp.org.uk

Published by the Kent Resource Partnership on behalf of the following KRP constituent councils:-

Ashford BC, Canterbury CC, Dartford BC, Dover DC, Folkestone & Hythe DC, Gravesham BC, Kent CC, Maidstone BC, Sevenoaks DC, Swale BC, Thanet DC, Tonbridge & Malling BC and Tunbridge Wells BC.

Information in this publication may be used without charge and without licence subject to the original context for information being maintained and “Kent Resource Partnership” being accredited as the source.

Publication Date: December 2020.

© Copyright 2020 of Sevenoaks District Council on behalf of the Kent Resource Partnership