

Manufacturing Industries in Kent

Related Documents

[Food production in Kent](#)

[Creative Industries in Kent](#)

[Construction Industry Report](#)

[Employees in the Knowledge Economy](#)

NOTE: within this bulletin 'Kent' refers to the Kent County Council (KCC) area which excludes Medway

Contact details

Strategic Commissioning - Analytics:

Kent County Council
Sessions House
Maidstone
Kent ME14 1XQ

Email: research@kent.gov.uk

Tel: 03000 417444

This bulletin looks at the number of manufacturing enterprises in Kent. It also looks at the number of employee jobs, the estimated GVA generated, occupational structure and graduates who find employment in the industry in Kent.

Summary

- 5.0% of businesses in Kent as at 2018 were manufacturing based enterprises, equal to the England average
- Maidstone district has the highest number of manufacturing businesses (370). Swale has the highest proportion at 6.7%
- In the wider Kent & Medway area Medway has the highest number of manufacturing enterprises (450).
- Almost half of the manufacturing businesses in Kent are involved with advanced engineering
- There were an estimated 38,500 employee jobs in manufacturing industries in Kent in 2017 (6.3% of all jobs) 40% of which are in advanced engineering
- Manufacturing generated an estimated £3,236m GVA in Kent & Medway in 2016
- 6.7% of the working population were working in manufacturing industry occupations as at 2011, 23.7% of which were in skilled trades occupations
- 205 graduate leavers found employment in manufacturing in Kent & Medway in 2016/17

Introduction

The manufacturing sector is defined as the fabrication, processing, or preparation of products from raw materials and commodities. This includes the manufacture of food and drink, clothing and textiles, wood, leather and paper, petroleum, chemicals and plastics, advanced engineering and any other form of manufacture.

This bulletin looks at the number of enterprises, employee jobs, the GVA created, occupations within the industry and the number of graduates finding employment in manufacturing.

Enterprises

The number of manufacturing enterprises comes from information from the UK Business Counts dataset produced by the Office for National Statistics (ONS). The UK Business Counts dataset is an extract compiled from the Inter Departmental Business Register (IDBR) which contains information on VAT traders and PAYE employers. The UK Business Counts dataset records the number of enterprises that were live at a reference date in March each year giving a snap shot of businesses that were live at this point in time. It is broken down by size band, industry, turnover and age of business. Further information about the methodology used for producing these data is available from the [Office for National Statistics](#).

Employee jobs

The number of employee jobs in the manufacturing sector comes from information from the Business Register and Employment Survey (BRES) produced by the ONS. The BRES is a sample survey which collects employment information from businesses across the whole of the Great Britain economy for each site that they operate. The survey covers all businesses in Great Britain registered for VAT and/or PAYE. BRES does not cover the very small businesses neither registered for VAT nor PAYE, neither does it include self employed workers unless they are registered for VAT or PAYE.

The data provides us with an estimate of employee jobs and total employment (number of employees plus the number of working owners)

BRES is a sample survey and produces estimated employment figures. These estimates are of a good quality at higher levels of geography (for example region), however the quality of the estimates deteriorates as the geographies get smaller. This should be taken into account when considering the quality of county and district estimates.

The survey provides us with estimates of employees by industrial sector. The manufacturing sector used in this bulletin is defined using the 2007 Standard Industrial Classification (2007SIC). Detailed information about the types of

industry which make up each of the industrial sectors is available from the [UK Standard Industrial Classification of Economic Activities](#) published by the Office for National Statistics.

GVA

This bulletin looks at GVA generated by the manufacturing industry.

Gross Value Added (GVA) is a measure of Output i.e. the value of the goods and services produced in the economy. It is primarily used to monitor the performance of the national economy and is now the measure preferred by the Office for National Statistics (ONS) to measure the overall economic well-being of an area. GVA estimates are available by broad industrial group down to local authority district level and are available for the years 1998 to 2016.

More information is available about GVA estimates from the [Office For National Statistics](#).

Occupations

Detailed information about the occupations and the industries in which residents work is available from the 2011 Census from ONS. This dataset gives us information about the occupations of Kent residents who were in employment at the time of the Census (27 March 2011). This data will not be updated until after the next census in 2021.

Qualification

Information about the highest qualification held by workers by industry is also available from the 2011 Census. This dataset gives us information about the qualifications held by people working in manufacturing in Kent.

Graduates finding employment

Lastly, this bulletin looks at the number of graduates who found employment in manufacturing industries in Kent and Medway.

The graduate data is taken from the Destinations of Leavers from Higher Education (DLHE). This is an annual survey conducted by the Higher Education Statistics Agency (HESA). This survey is undertaken on completion of their course of study and is voluntary. Although the survey is on a voluntary basis, there is a consistently high response rate each year of around 85% of all leavers. All data is rounded to the nearest 5.

Maps

Data in this bulletin is also presented in Middle Layer Super Output Area (MSOA) maps. MSOAs are a geographic hierarchy designed to improve the reporting of small area statistics in England and Wales.

Manufacturing Industry Enterprises

The UK Business Counts dataset records the number of enterprises that were live as at March each year, giving a snap shot of businesses that were operating at this point in time. It is broken down by size band, industry and turnover.

All numbers are rounded at source. Values may be rounded down to zero and so all zeros are not necessarily true zeros. Totals across tables may differ by minor amounts due to the disclosure methods used.

5% of enterprises in England were manufacturing enterprises as at 2018.

16% of all the manufacturing enterprises in the country could be found in the South East region, however manufacturing accounts for a smaller proportion of enterprise in the South East than all other regions with the exception of London.

Table 1: Manufacturing enterprises by region

| 2018 | Number | % of all manufacturing enterprises in England |
|--------------------------|---------|---|
| England | 116,880 | 100% |
| South East | 18,725 | 16% |
| North West | 14,830 | 13% |
| West Midlands | 14,565 | 12% |
| East | 14,065 | 12% |
| London | 13,735 | 12% |
| South West | 12,305 | 11% |
| Yorkshire and The Humber | 12,190 | 10% |
| East Midlands | 12,100 | 10% |
| North East | 4,360 | 4% |

Source: UK Business Counts

Presented by: Strategic Commissioning - Analytics, Kent County Council

The number of manufacturing enterprises increased nationally by 6.9% and has increased in all regions over the last five years. London and the South East have seen the biggest growth in the number of enterprises.

Table 2: Change in manufacturing enterprises by region

| Manufacturing enterprises | | | Change since last year | | 5 year change | |
|---------------------------|----------------|-------------|------------------------|-------------|---------------|-------------|
| 2018 | Number | % | Number | % | Number | % |
| England | 116,880 | 5.0% | 415 | 0.4% | 7,565 | 6.9% |
| East Midlands | 14,565 | 6.9% | -170 | -1.2% | 630 | 4.5% |
| West Midlands | 12,100 | 6.8% | -150 | -1.2% | 755 | 6.7% |
| Yorkshire and The Humber | 12,190 | 6.7% | 55 | 0.5% | 875 | 7.7% |
| North West | 4,360 | 6.3% | 10 | 0.2% | 510 | 13.2% |
| North East | 14,830 | 5.5% | 265 | 1.8% | 1,020 | 7.4% |
| East | 14,065 | 5.3% | 0 | 0.0% | 705 | 5.3% |
| South West | 12,305 | 5.3% | 140 | 1.2% | 790 | 6.9% |
| South East | 18,725 | 4.6% | 30 | 0.2% | 1,035 | 5.9% |
| London | 13,735 | 2.7% | 230 | 1.7% | 1,235 | 9.9% |

Source: UK Business Counts

Presented by: Strategic Commissioning - Analytics, Kent County Council

Kent had the same proportion of manufacturing enterprises as England as at March 2018. 3,075 enterprises in the county accounted for 5.0% of all enterprises in Kent.

Maidstone district had the highest number of manufacturing enterprises (370) while Swale district had the highest proportion (6.7%, 325 enterprises).

Table 3: Manufacturing enterprises

| 2018 | Total enterprises | Manufacturing enterprises | | Change since last year | | 5 year change | |
|-----------------------|-------------------|---------------------------|------|------------------------|-------|---------------|-------|
| | Number | Number | % | Number | % | Number | % |
| Ashford | 6,205 | 330 | 5.3% | 10 | 3.1% | -15 | -4.3% |
| Canterbury | 5,265 | 230 | 4.4% | 0 | 0.0% | 20 | 9.5% |
| Dartford | 4,240 | 220 | 5.2% | -5 | -2.2% | 5 | 2.3% |
| Dover | 3,370 | 170 | 5.0% | 0 | 0.0% | 15 | 9.7% |
| Folkestone & Hythe | 3,670 | 165 | 4.5% | 0 | 0.0% | 20 | 13.8% |
| Gravesham | 3,830 | 195 | 5.1% | 15 | 8.3% | 25 | 14.7% |
| Maidstone | 7,295 | 370 | 5.1% | 10 | 2.8% | 30 | 8.8% |
| Sevenoaks | 6,580 | 310 | 4.7% | 0 | 0.0% | -10 | -3.1% |
| Swale | 4,820 | 325 | 6.7% | 0 | 0.0% | 15 | 4.8% |
| Thanet | 3,865 | 240 | 6.2% | 10 | 4.3% | 35 | 17.1% |
| Tonbridge and Malling | 5,745 | 270 | 4.7% | 5 | 1.9% | 10 | 3.8% |
| Tunbridge Wells | 6,365 | 245 | 3.8% | -10 | -3.9% | 20 | 8.9% |
| Kent | 61,255 | 3,075 | 5.0% | 30 | 1.0% | 180 | 6.2% |
| Medway | 8,410 | 450 | 5.4% | -10 | -2.2% | 30 | 7.1% |
| Kent + Medway | 69,660 | 3,525 | 5.1% | 20 | 0.6% | 210 | 6.3% |
| South East Region | 404,555 | 18,725 | 4.6% | 30 | 0.2% | 1,035 | 5.9% |
| England | 2,318,060 | 116,880 | 5.0% | 415 | 0.4% | 7,565 | 6.9% |

Source: UK Business Counts

Presented by: Strategic Commissioning - Analytics, Kent County Council

The distribution of manufacturing enterprises in Kent and Medway middle super output areas (MSOAs) is shown in map 1. MSOAs are a geographic

hierarchy designed to improve the reporting of small area statistics in England and Wales.

Map 1: Manufacturing industry enterprises in Kent & Medway

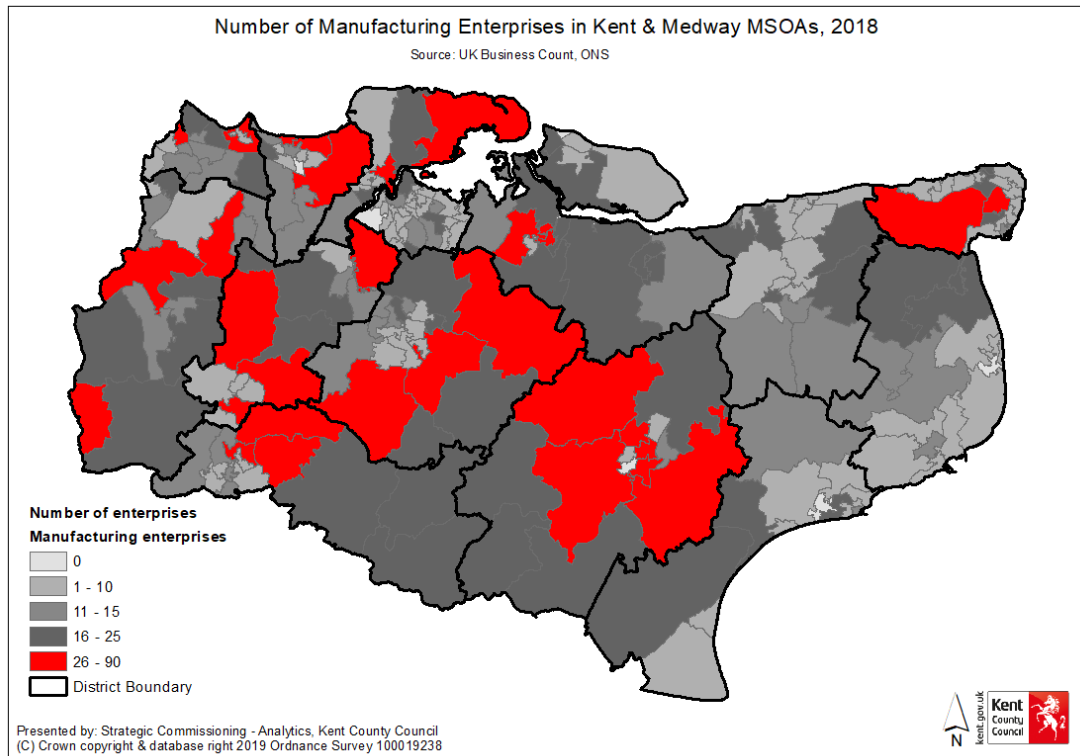
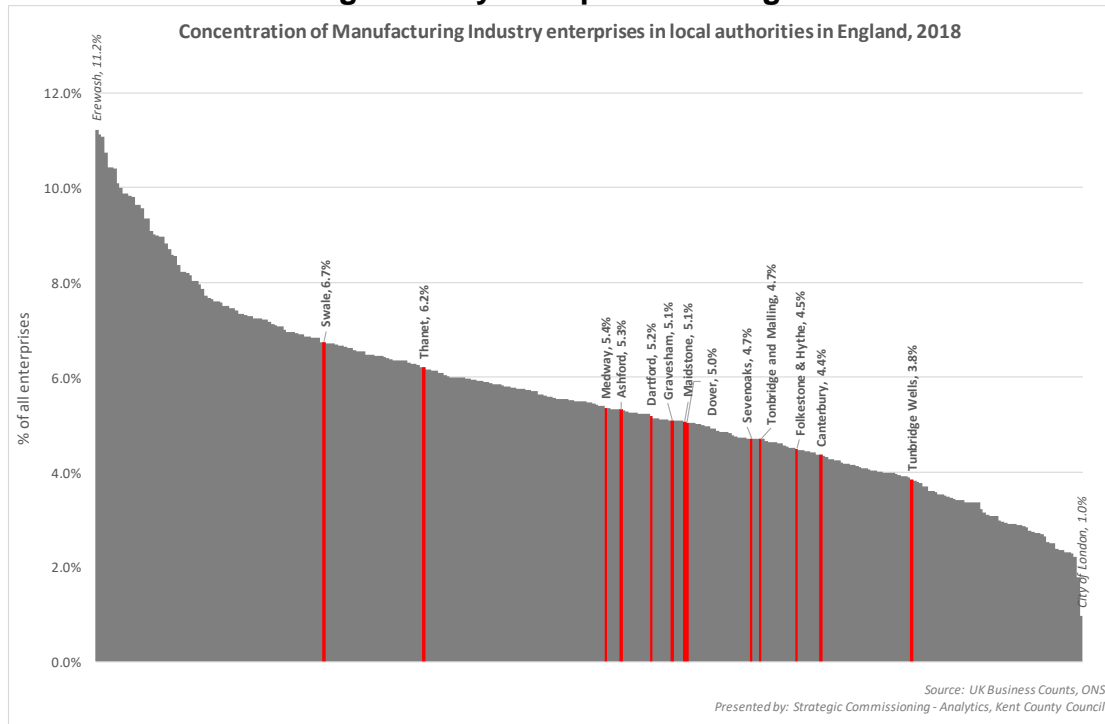


Chart 1 shows the proportion of manufacturing enterprises in local authorities in England. No Kent district appears within the top 20% of districts with the highest concentration of manufacturing enterprises in the country. The highest ranking Kent local authorities were Swale and Thanet. Tunbridge Wells district was within the 20% of authorities with the lowest proportion.

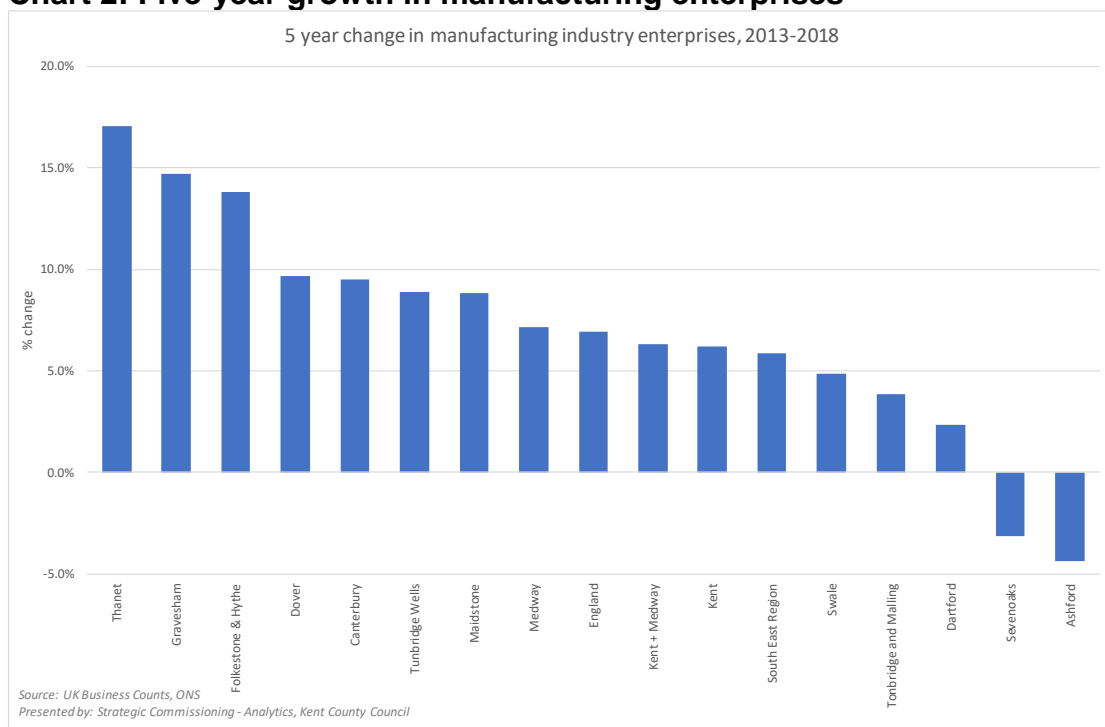
Chart 1: Manufacturing industry enterprises in England



The number of manufacturing enterprises in Kent has increased over recent years. The biggest increase was seen in Thanet with 35 more manufacturing enterprises than five years ago, an increase of 17.1%.

Not all authorities have seen manufacturing increase. Ashford (-15, -4.3%) and Sevenoaks (-10, -3.1%) each saw a reduction since 2013.

Chart 2: Five-year growth in manufacturing enterprises



We have subdivided the manufacturing industry into six broad manufacturing types:

| |
|---|
| <p>Food & Drink Manufacture <i>Manufacture of food products</i> <i>Manufacture of beverages</i></p> |
| <p>Clothing & Textiles Manufacture <i>Manufacture of textiles</i> <i>Manufacture of wearing apparel</i></p> |
| <p>Wood, Leather & Paper Manufacture <i>Manufacture of leather & related products</i> <i>Manufacture of wood and products of wood or cork except furniture</i> <i>Manufacture of paper and paper products</i> <i>Printing and reproduction of recorded media</i></p> |
| <p>Petroleum, Chemicals and Plastics <i>Manufacture of coke and refined petroleum products</i> <i>Manufacture of chemicals and chemical products</i> <i>Manufacture of basic pharmaceutical products and preparations</i> <i>Manufacture of rubber and plastic products</i> <i>Manufacture of other non metallic mineral products</i></p> |
| <p>Advanced Engineering <i>Manufacture of basic metals</i> <i>Manufacture of fabricated metal products except machinery & equipment</i> <i>Manufacture of computer, electronic & optical products</i> <i>Manufacture of electrical equipment</i> <i>Manufacture of machinery & equipment (not classified elsewhere)</i> <i>Manufacture of motor vehicles, trailers and semi-trailers</i> <i>Manufacture of other transport equipment</i> <i>Repair & installation of machinery & equipment</i></p> |
| <p>Other Manufacture <i>Manufacture of tobacco products</i> <i>Manufacture of furniture</i> <i>Other manufacturing</i></p> |

Advanced engineering accounts for almost a half of all manufacturing enterprises in Kent (48.1%). Swale and Maidstone districts have the highest number of advanced engineering enterprises (170 in each local authority).

Wood, leather and paper manufacture accounts for one in five manufacturing enterprises in Kent.

Table 4: Make up of manufacturing enterprises

| | Total | Food & Drink | Clothing & Textiles | Wood, Leather & Paper | Petroleum, Chemicals and Plastics | Advanced Engineering | Other |
|-----------------------|----------------|--------------|---------------------|-----------------------|-----------------------------------|----------------------|---------------|
| 2018 | Manufacturing | Manufacture | Manufacture | Manufacture | Plastics | Engineering | Manufacture |
| Ashford | 330 | 30 | 10 | 65 | 30 | 150 | 45 |
| Canterbury | 230 | 15 | 15 | 50 | 15 | 105 | 35 |
| Dartford | 220 | 5 | 0 | 45 | 25 | 130 | 15 |
| Dover | 170 | 15 | 10 | 30 | 10 | 95 | 15 |
| Folkestone & Hythe | 165 | 15 | 5 | 30 | 20 | 85 | 15 |
| Gravesham | 195 | 5 | 5 | 35 | 15 | 110 | 30 |
| Maidstone | 370 | 30 | 10 | 90 | 40 | 170 | 30 |
| Sevenoaks | 310 | 15 | 15 | 80 | 30 | 140 | 40 |
| Swale | 325 | 20 | 10 | 55 | 30 | 170 | 35 |
| Thanet | 240 | 15 | 15 | 40 | 25 | 110 | 35 |
| Tonbridge and Malling | 270 | 15 | 10 | 65 | 20 | 135 | 25 |
| Tunbridge Wells | 245 | 25 | 15 | 70 | 20 | 80 | 35 |
| Kent | 3,075 | 205 | 115 | 645 | 280 | 1,480 | 355 |
| Medway | 450 | 20 | 20 | 70 | 30 | 275 | 30 |
| Kent + Medway | 3,525 | 225 | 135 | 715 | 310 | 1,755 | 385 |
| South East | 18,725 | 1,170 | 770 | 3,330 | 1,660 | 9,565 | 2,230 |
| England | 116,880 | 8,250 | 7,160 | 19,940 | 11,190 | 56,470 | 13,870 |

Source: UK Business Counts

Presented by: Strategic Commissioning - Analytics, Kent County Council

Table 5: Proportion of manufacturing enterprises by manufacturing type

| | Total | Food & Drink | Clothing & Textiles | Wood, Leather & Paper | Petroleum, Chemicals and Plastics | Advanced Engineering | Other |
|-----------------------|---------------|--------------|---------------------|-----------------------|-----------------------------------|----------------------|--------------|
| 2018 | Manufacturing | Manufacture | Manufacture | Manufacture | Plastics | Engineering | Manufacture |
| Ashford | 100% | 9.1% | 3.0% | 19.7% | 9.1% | 45.5% | 13.6% |
| Canterbury | 100% | 6.5% | 6.5% | 21.7% | 6.5% | 45.7% | 15.2% |
| Dartford | 100% | 2.3% | 0.0% | 20.5% | 11.4% | 59.1% | 6.8% |
| Dover | 100% | 8.8% | 5.9% | 17.6% | 5.9% | 55.9% | 8.8% |
| Folkestone & Hythe | 100% | 9.1% | 3.0% | 18.2% | 12.1% | 51.5% | 9.1% |
| Gravesham | 100% | 2.6% | 2.6% | 17.9% | 7.7% | 56.4% | 15.4% |
| Maidstone | 100% | 8.1% | 2.7% | 24.3% | 10.8% | 45.9% | 8.1% |
| Sevenoaks | 100% | 4.8% | 4.8% | 25.8% | 9.7% | 45.2% | 12.9% |
| Swale | 100% | 6.2% | 3.1% | 16.9% | 9.2% | 52.3% | 10.8% |
| Thanet | 100% | 6.3% | 6.3% | 16.7% | 10.4% | 45.8% | 14.6% |
| Tonbridge and Malling | 100% | 5.6% | 3.7% | 24.1% | 7.4% | 50.0% | 9.3% |
| Tunbridge Wells | 100% | 10.2% | 6.1% | 28.6% | 8.2% | 32.7% | 14.3% |
| Kent | 100% | 6.7% | 3.7% | 21.0% | 9.1% | 48.1% | 11.5% |
| Medway | 100% | 4.4% | 4.4% | 15.6% | 6.7% | 61.1% | 6.7% |
| Kent + Medway | 100% | 6.4% | 3.8% | 20.3% | 8.8% | 49.8% | 10.9% |
| South East | 100% | 6.2% | 4.1% | 17.8% | 8.9% | 51.1% | 11.9% |
| England | 100% | 7.1% | 6.1% | 17.1% | 9.6% | 48.3% | 11.9% |

Source: UK Business Counts

Presented by: Strategic Commissioning - Analytics, Kent County Council

Looking in more detail at the enterprises which are classified as manufacturing based it shows that businesses which manufacture fabricated metal products accounts for almost one in five of all manufacturing enterprises in Kent. In Medway they account for almost a quarter of all manufacturing enterprises.

Table 6: Detailed manufacturing enterprises

| 2018 | Kent | Medway | South East | England |
|--|--------------|--------------|---------------|----------------|
| Total Manufacturing | 3,075 | 450 | 18,725 | 116,880 |
| Food & Drink Manufacture | 6.7% | 4.4% | 6.2% | 7.1% |
| <i>Manufacture of food products</i> | 4.9% | 4.4% | 4.6% | 5.5% |
| <i>Manufacture of beverages</i> | 1.6% | 1.1% | 1.6% | 1.6% |
| Clothing & Textiles Manufacture | 3.7% | 4.4% | 4.1% | 6.1% |
| <i>Manufacture of textiles</i> | 2.1% | 3.3% | 2.4% | 3.1% |
| <i>Manufacture of wearing apparel</i> | 1.6% | 1.1% | 1.7% | 3.0% |
| Wood, Leather & Paper Manufacture | 21.0% | 15.6% | 17.8% | 17.1% |
| <i>Manufacture of leather & related products</i> | 0.3% | 0.0% | 0.3% | 0.5% |
| <i>Manufacture of wood and products of wood or cork except furniture</i> | 7.3% | 7.8% | 6.3% | 6.4% |
| <i>Manufacture of paper and paper products</i> | 1.5% | 1.1% | 0.9% | 1.1% |
| <i>Printing and reproduction of recorded media</i> | 11.9% | 6.7% | 10.3% | 9.1% |
| Petroleum, Chemicals and Plastics | 9.1% | 6.7% | 8.9% | 9.6% |
| <i>Manufacture of coke and refined petroleum products</i> | 0.2% | 0.0% | 0.1% | 0.1% |
| <i>Manufacture of chemicals and chemical products</i> | 2.0% | 2.2% | 2.1% | 2.2% |
| <i>Manufacture of basic pharmaceutical products and preparations</i> | 0.5% | 0.0% | 0.6% | 0.5% |
| <i>Manufacture of rubber and plastic products</i> | 3.6% | 3.3% | 3.7% | 4.3% |
| <i>Manufacture of other non metallic mineral products</i> | 3.1% | 2.2% | 2.3% | 2.6% |
| Advanced Engineering | 48.1% | 61.1% | 51.1% | 48.3% |
| <i>Manufacture of basic metals</i> | 1.3% | 1.1% | 0.9% | 1.3% |
| <i>Manufacture of fabricated metal products except machinery & equipment</i> | 19.5% | 23.3% | 19.2% | 20.5% |
| <i>Manufacture of computer, electronic & optical products</i> | 4.4% | 4.4% | 6.9% | 4.7% |
| <i>Manufacture of electrical equipment</i> | 2.4% | 2.2% | 2.8% | 2.3% |
| <i>Manufacture of machinery & equipment (not classified elsewhere)</i> | 5.4% | 7.8% | 5.4% | 5.7% |
| <i>Manufacture of motor vehicles, trailers and semi-trailers</i> | 2.0% | 2.2% | 2.3% | 2.5% |
| <i>Manufacture of other transport equipment</i> | 1.1% | 1.1% | 2.8% | 1.7% |
| <i>Repair & installation of machinery & equipment</i> | 11.9% | 18.9% | 10.7% | 9.7% |
| Other Manufacture | 11.5% | 6.7% | 11.9% | 11.9% |
| <i>Manufacture of tobacco products</i> | 0.0% | 0.0% | 0.0% | 0.0% |
| <i>Manufacture of furniture</i> | 4.6% | 2.2% | 4.5% | 4.7% |
| <i>Other manufacturing</i> | 7.0% | 4.4% | 7.4% | 7.1% |

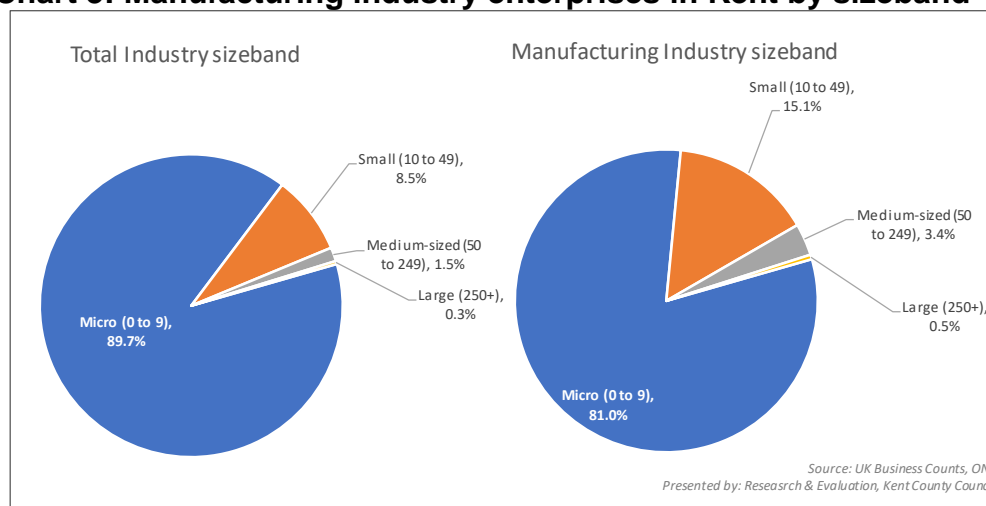
Source: UK Business Counts

Presented by: Strategic Commissioning - Analytics, Kent County Council

An enterprise can be classified as a micro, small, medium sized or large depending upon the number of workers it employs.

Manufacturing enterprises are less likely to be micro enterprises (employing 0-9 people) than the average for total industries and more likely to be classified as small (employing 10-49 workers) or medium sized (50-249 workers). In Kent 89.7% of businesses are classified as micro enterprises but when looking specifically at manufacturing enterprises 81.0% of enterprises are micro enterprises. 15.1% of manufacturing businesses are small enterprises above the average for total enterprises (8.5%) and 3.4% medium sized as opposed to the average of 1.5%.

Chart 3: Manufacturing industry enterprises in Kent by sizeband



Folkestone and Hythe, Ashford, Swale and Medway have a higher proportion of manufacturing enterprises which are classified as large (employing 250 workers or more) than the national or regional average. In Folkestone and Hythe 3.0% of manufacturing enterprises are large enterprises, significantly higher than the national average of 0.9%.

Table 7: Manufacturing enterprises - sizebands

| | Employment sizeband - manufacturing enterprises | | | | | Percentage of all enterprises | | | |
|-----------------------|---|----------------|------------------|--------------------------|--------------|-------------------------------|------------------|--------------------------|--------------|
| | Total | Micro (0 to 9) | Small (10 to 49) | Medium-sized (50 to 249) | Large (250+) | Micro (0 to 9) | Small (10 to 49) | Medium-sized (50 to 249) | Large (250+) |
| 2018 | | | | | | | | | |
| Ashford | 330 | 265 | 50 | 10 | 5 | 80.3% | 15.2% | 3.0% | 1.5% |
| Canterbury | 230 | 200 | 25 | 5 | 0 | 87.0% | 10.9% | 2.2% | 0.0% |
| Dartford | 220 | 185 | 30 | 5 | 0 | 84.1% | 13.6% | 2.3% | 0.0% |
| Dover | 170 | 140 | 20 | 10 | 0 | 82.4% | 11.8% | 5.9% | 0.0% |
| Folkestone & Hythe | 165 | 135 | 20 | 5 | 5 | 81.8% | 12.1% | 3.0% | 3.0% |
| Gravesham | 195 | 175 | 15 | 5 | 0 | 89.7% | 7.7% | 2.6% | 0.0% |
| Maidstone | 370 | 300 | 55 | 15 | 0 | 81.1% | 14.9% | 4.1% | 0.0% |
| Sevenoaks | 310 | 250 | 50 | 10 | 0 | 80.6% | 16.1% | 3.2% | 0.0% |
| Swale | 325 | 250 | 55 | 15 | 5 | 76.9% | 16.9% | 4.6% | 1.5% |
| Thanet | 240 | 185 | 45 | 10 | 0 | 77.1% | 18.8% | 4.2% | 0.0% |
| Tonbridge and Malling | 270 | 215 | 50 | 10 | 0 | 79.6% | 18.5% | 3.7% | 0.0% |
| Tunbridge Wells | 245 | 200 | 40 | 5 | 0 | 81.6% | 16.3% | 2.0% | 0.0% |
| Kent | 3,075 | 2,490 | 465 | 105 | 15 | 81.0% | 15.1% | 3.4% | 0.5% |
| Medway | 450 | 355 | 75 | 15 | 5 | 78.9% | 16.7% | 3.3% | 1.1% |
| Kent + Medway | 3,525 | 2,845 | 540 | 120 | 20 | 80.7% | 15.3% | 3.4% | 0.6% |
| South East | 18,725 | 15,230 | 2,670 | 660 | 160 | 81.3% | 14.3% | 3.5% | 0.9% |
| England | 116,880 | 91,640 | 19,055 | 5,145 | 1,040 | 78.4% | 16.3% | 4.4% | 0.9% |

Source: UK Business Counts

Presented by: Strategic Commissioning - Analytics, Kent County Council

More than half of Kent manufacturing enterprises (58.5%) have an annual turnover of up to £199,000, this reflects a similar picture to that seen nationally (57.4%) and regionally (59.0%). Almost one in five of the manufacturing enterprises in the South East region who have an annual turnover higher than £500,000 are Kent and Medway based enterprises.

Table 8: Manufacturing enterprise turnover

| 2018 | Number of Manufacturing enterprises | | | | % of total Manufacturing enterprises | | | |
|---------------------------|-------------------------------------|--------|------------|---------|--------------------------------------|--------|------------|---------|
| | Kent | Medway | South East | England | Kent | Medway | South East | England |
| Total | 2,895 | 420 | 17,690 | 109,315 | 100% | 100% | 100% | 100% |
| 0 to 49 (thousand) | 435 | 60 | 2,745 | 15,525 | 15.0% | 14.3% | 15.5% | 14.2% |
| 50 to 99 (thousand) | 580 | 75 | 3,625 | 21,950 | 20.0% | 17.9% | 20.5% | 20.1% |
| 100 to 199 (thousand) | 680 | 95 | 4,060 | 25,325 | 23.5% | 22.6% | 23.0% | 23.2% |
| 200 to 499 (thousand) | 390 | 55 | 2,305 | 14,010 | 13.5% | 13.1% | 13.0% | 12.8% |
| 500 to 999 (thousand) | 320 | 50 | 1,765 | 11,210 | 11.1% | 11.9% | 10.0% | 10.3% |
| 1000 to 1999 (thousand) | 210 | 40 | 1,250 | 7,880 | 7.3% | 9.5% | 7.1% | 7.2% |
| 2000 to 4999 (thousand) | 150 | 25 | 980 | 6,650 | 5.2% | 6.0% | 5.5% | 6.1% |
| 5000 to 9999 (thousand) | 55 | 5 | 405 | 2,895 | 1.9% | 1.2% | 2.3% | 2.6% |
| 10000 to 49999 (thousand) | 65 | 10 | 405 | 2,960 | 2.2% | 2.4% | 2.3% | 2.7% |
| 50000+ (thousand) | 15 | 0 | 150 | 905 | 0.5% | 0.0% | 0.8% | 0.8% |

Source: UK Business Counts

Presented by: Strategic Commissioning - Analytics, Kent County Council

Employees in Manufacturing Industries

The Business Register and Employment Survey (BRES) provides us with estimates of the number of employees by industrial sector. The manufacturing sector used in this bulletin is defined using the 2007 Standard Industrial Classification (2007SIC).

Manufacturing supplies over two million employee jobs, accounting for 8.1% of all jobs in the country and is strongest in the Midlands and the north of the country.

The North East has the highest number of manufacturing employees and has seen the highest growth in number of jobs over recent years.

The Midlands, Yorkshire and the North West have the highest proportion of manufacturing jobs in the country. The South East has the second lowest proportion in the country (6.1%), below the national average of 8.1%. However, when looking at the number of jobs the South East has the fifth highest number in the country, with 251,000 employee jobs in 2017 accounting for 12% of all national manufacturing jobs.

Manufacturing jobs have increased in all parts of the country except the South East, London and the South West.

Table 9: Regional manufacturing employee jobs

| | Number of employee jobs in manufacturing | | | Percentage of employee jobs in manufacturing | | | Change 2015-2017 | |
|--------------------------|--|------------------|------------------|--|-------------|-------------|------------------|--------------|
| | 2015 | 2016 | 2017 | 2015 | 2016 | 2017 | No. | % |
| England | 2,030,000 | 2,039,000 | 2,085,500 | 8.1% | 8.0% | 8.1% | 46,500 | 2.3% |
| West Midlands | 268,000 | 267,500 | 285,500 | 13.3% | 13.0% | 13.7% | 17,500 | 6.5% |
| East Midlands | 296,000 | 293,500 | 297,000 | 12.0% | 11.7% | 11.5% | 1,000 | 0.3% |
| Yorkshire and The Humber | 266,000 | 240,000 | 272,500 | 11.4% | 10.3% | 11.5% | 6,500 | 2.4% |
| North West | 117,500 | 112,000 | 118,000 | 11.0% | 10.8% | 11.1% | 500 | 0.4% |
| North East | 305,000 | 320,000 | 325,500 | 9.6% | 9.9% | 9.9% | 20,500 | 6.7% |
| South West | 209,000 | 222,500 | 207,500 | 8.8% | 9.2% | 8.5% | -1,500 | -0.7% |
| East | 202,500 | 214,000 | 220,000 | 7.7% | 7.9% | 8.0% | 17,500 | 8.6% |
| South East | 251,500 | 260,500 | 251,000 | 6.2% | 6.3% | 6.1% | -500 | -0.2% |
| London | 114,000 | 110,000 | 108,500 | 2.3% | 2.2% | 2.1% | -5,500 | -4.8% |

Source: BRES

Presented by: Strategic Commissioning - Analytics, Kent County Council

As at 2017 there were 38,500 employees working in the manufacturing industry in Kent, accounting for 6.3% of all employees in the county. This is a higher proportion than is seen regionally (6.1%) but lower than the national figure of 8.1%.

Swale district had the highest number of manufacturing employees (6,500) accounting for 12.9% of the area's total employee jobs. The lowest proportion was in Canterbury where 2.8% of employee jobs were in manufacturing.

Three districts (Dartford, Dover and Tonbridge and Malling) have seen manufacturing employee numbers grow over recent years, the largest growth being in Dartford. Five districts saw no change and four saw a reduction.

Table 10: Manufacturing employees

| | Number of employee jobs in manufacturing | | | Percentage of employee jobs in manufacturing | | | Change 2015-2017 | |
|-----------------------|--|------------------|------------------|--|-------------|-------------|------------------|--------------|
| | 2015 | 2016 | 2017 | 2015 | 2016 | 2017 | No. | % |
| Ashford | 5,000 | 4,800 | 4,800 | 9.2% | 8.5% | 8.4% | -300 | -5.0% |
| Canterbury | 1,900 | 1,800 | 1,900 | 3.0% | 2.7% | 2.8% | 0 | 0.0% |
| Dartford | 2,800 | 2,800 | 3,300 | 4.4% | 4.4% | 5.7% | 500 | 18.2% |
| Dover | 2,800 | 3,000 | 3,000 | 8.0% | 9.1% | 8.8% | 300 | 9.1% |
| Folkestone & Hythe | 1,800 | 1,800 | 1,500 | 4.7% | 4.8% | 4.2% | -300 | -14.3% |
| Gravesham | 1,800 | 1,800 | 1,800 | 6.0% | 5.7% | 5.5% | 0 | 0.0% |
| Maidstone | 4,300 | 4,300 | 4,000 | 5.6% | 5.6% | 5.3% | -300 | -5.9% |
| Sevenoaks | 3,000 | 3,300 | 3,000 | 5.9% | 6.4% | 5.6% | 0 | 0.0% |
| Swale | 6,500 | 7,000 | 6,500 | 13.1% | 13.9% | 12.9% | 0 | 0.0% |
| Thanet | 3,000 | 3,300 | 3,000 | 7.2% | 7.9% | 7.1% | 0 | 0.0% |
| Tonbridge and Malling | 3,300 | 3,500 | 3,500 | 5.7% | 6.0% | 6.1% | 300 | 7.7% |
| Tunbridge Wells | 3,300 | 3,000 | 2,400 | 5.2% | 5.6% | 4.6% | -900 | -26.9% |
| Kent | 39,000 | 39,500 | 38,500 | 6.3% | 6.4% | 6.3% | -500 | -1.3% |
| Medway | 7,000 | 7,000 | 6,500 | 8.0% | 7.6% | 7.1% | -500 | -7.1% |
| Kent + Medway | 46,000 | 47,000 | 45,000 | 6.5% | 6.7% | 6.4% | -1,000 | -2.2% |
| South East | 251,500 | 260,500 | 251,000 | 6.2% | 6.3% | 6.1% | -500 | -0.2% |
| England | 2,030,000 | 2,039,000 | 2,085,500 | 8.1% | 8.0% | 8.1% | 55,500 | 2.7% |

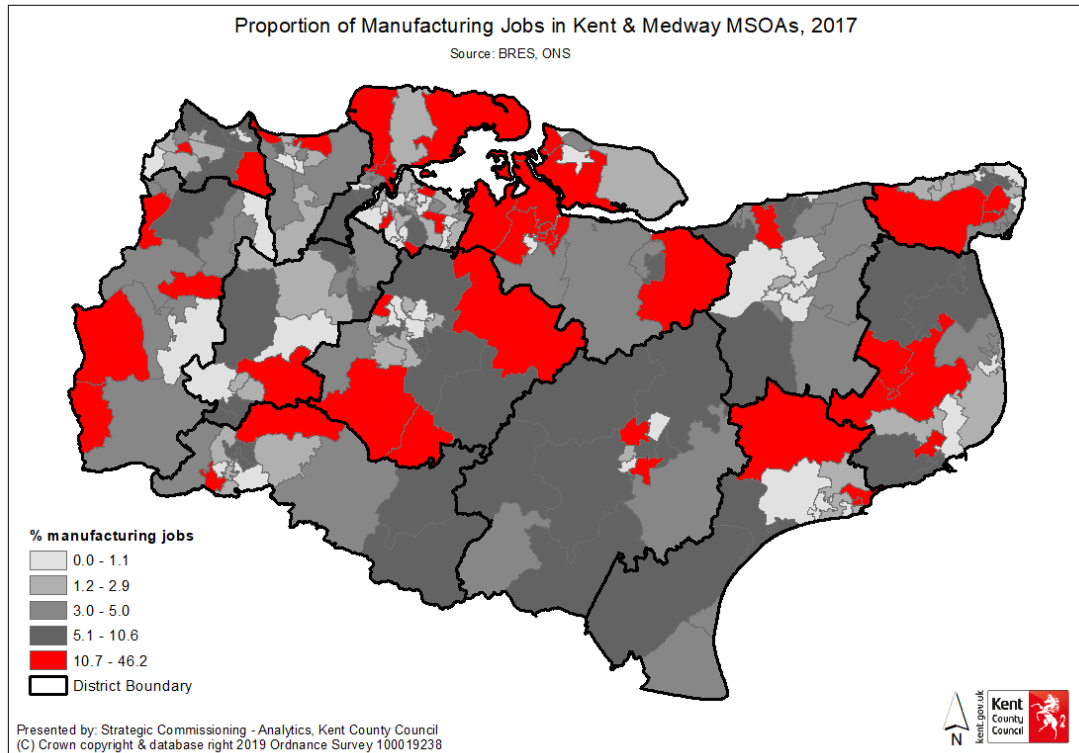
Source: BRES

Presented by: Strategic Commissioning - Analytics, Kent County Council

The proportion of employee jobs in the manufacturing industry in Kent and Medway MSOAs is shown in map 2. MSOAs are a geographic hierarchy

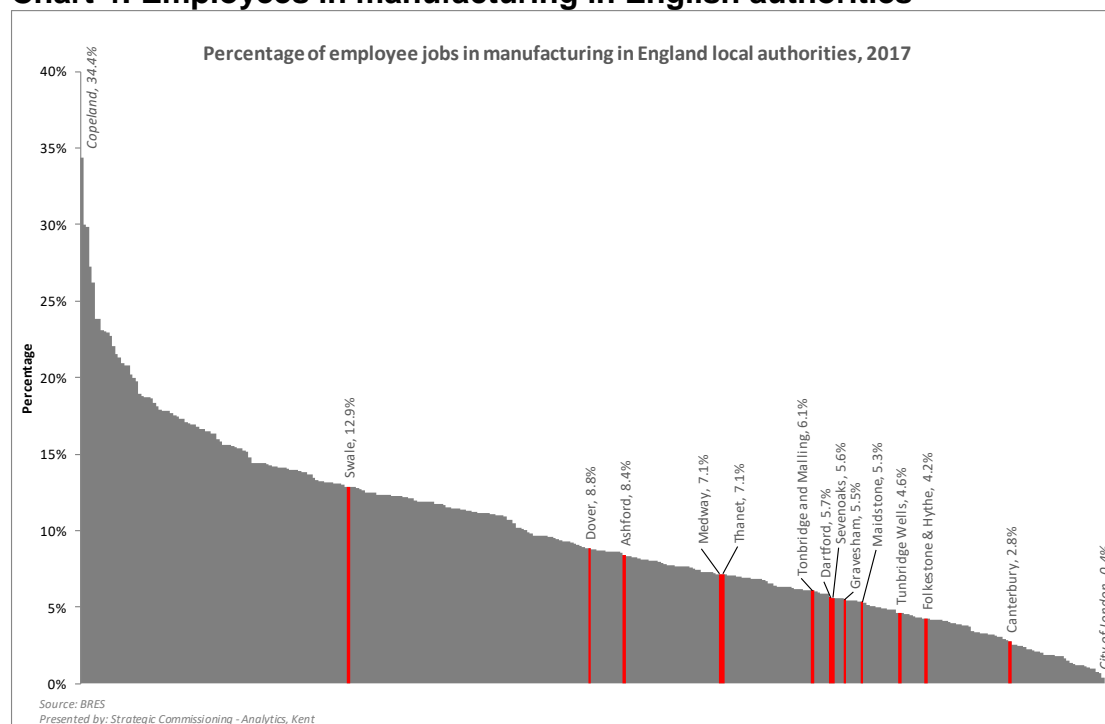
designed to improve the reporting of small area statistics in England and Wales.

Map 2: Proportion of employee jobs in the manufacturing industry in Kent & Medway



When compared to other authorities in England, no Kent authority is within the top 20% with the highest percentage of employee jobs in manufacturing, these are those areas where the industry provides at least 14.1% of employee jobs. Swale district is within the top 40% (11.1% or more of jobs). Nine Kent authorities are within the bottom 20%, that is those areas with less than 7.2% of jobs within manufacturing.

Chart 4: Employees in manufacturing in English authorities



The majority of manufacturing employees in Kent (40%) are working within advanced engineering. In Canterbury and Folkestone and Hythe this accounts for 60% of manufacturing employee jobs.

Table 11: Makeup of Manufacturing Industry employees

| | Number | | | | | | |
|-----------------------|---------------------|--------------------------|---------------------------------|-------------------------|----------------------------------|---------------------------------|-------------------|
| | Total Manufacturing | Food & Drink Manufacture | Clothing & Textiles Manufacture | Wood, Paper Manufacture | Leather & Chemicals and Plastics | Petroleum, Advanced Engineering | Other Manufacture |
| 2017 | | | | | | | |
| Ashford | 4,800 | 700 | 0 | 700 | 1,300 | 1,400 | 800 |
| Canterbury | 1,900 | 100 | 100 | 300 | 200 | 1,100 | 100 |
| Dartford | 3,300 | 500 | 0 | 400 | 700 | 1,500 | 100 |
| Dover | 3,000 | 1,000 | 0 | 300 | 400 | 1,100 | 100 |
| Folkestone & Hythe | 1,500 | 100 | 0 | 100 | 400 | 900 | 100 |
| Gravesham | 1,800 | 0 | 0 | 600 | 400 | 600 | 200 |
| Maidstone | 4,000 | 600 | 0 | 500 | 1,300 | 1,400 | 200 |
| Sevenoaks | 3,000 | 300 | 100 | 700 | 300 | 1,600 | 300 |
| Swale | 6,500 | 1,000 | 0 | 900 | 1,600 | 2,500 | 200 |
| Thanet | 3,000 | 200 | 200 | 300 | 700 | 1,500 | 200 |
| Tonbridge and Malling | 3,500 | 500 | 0 | 900 | 800 | 1,100 | 100 |
| Tunbridge Wells | 2,400 | 600 | 0 | 500 | 300 | 800 | 200 |
| Kent | 38,500 | 5,500 | 500 | 6,000 | 8,000 | 15,500 | 2,500 |
| Medway | 6,500 | 400 | 100 | 1,000 | 800 | 4,000 | 500 |
| Kent + Medway | 45,000 | 6,000 | 600 | 7,000 | 9,000 | 19,500 | 3,000 |
| South East | 251,000 | 26,000 | 4,500 | 25,500 | 39,000 | 135,000 | 21,000 |
| England | 2,085,500 | 339,000 | 68,000 | 194,500 | 345,500 | 1,001,500 | 137,000 |

Source: BRES
Presented by: Strategic Commissioning - Analytics, Kent County Council

While advanced engineering accounts for the highest proportion of employee jobs in most Kent districts, in Gravesham it accounts for an equal proportion to wood, leather and paper production (34.3%)

The manufacture of clothing and textiles accounts for the smallest proportion of manufacturing jobs in the county.

Table 12: Proportion of manufacturing jobs by manufacturing type

| | % of total manufacturing employees | | | | | | |
|-----------------------|------------------------------------|--------------|---------------------|-----------------------|-----------------------------------|----------------------|-------------|
| | Total | Food & Drink | Clothing & Textiles | Wood, Leather & Paper | Petroleum, Chemicals and Plastics | Advanced Engineering | Other |
| 2017 | Manufacturing | Manufacture | Manufacture | Manufacture | | | Manufacture |
| Ashford | 100.0% | 13.7% | 0.7% | 14.7% | 26.3% | 28.9% | 16.8% |
| Canterbury | 100.0% | 6.9% | 3.2% | 17.3% | 8.0% | 60.0% | 7.5% |
| Dartford | 100.0% | 15.4% | 0.2% | 12.3% | 21.5% | 46.2% | 2.2% |
| Dover | 100.0% | 33.3% | 0.7% | 8.3% | 13.3% | 37.5% | 2.3% |
| Folkestone & Hythe | 100.0% | 6.0% | 2.0% | 4.0% | 25.0% | 60.0% | 8.0% |
| Gravesham | 100.0% | 0.9% | 0.0% | 34.3% | 21.4% | 34.3% | 10.9% |
| Maidstone | 100.0% | 13.8% | 1.0% | 11.3% | 31.3% | 34.4% | 5.3% |
| Sevenoaks | 100.0% | 9.2% | 2.0% | 21.7% | 8.3% | 54.2% | 8.3% |
| Swale | 100.0% | 15.4% | 0.7% | 13.1% | 25.0% | 38.5% | 2.8% |
| Thanet | 100.0% | 7.0% | 5.3% | 10.0% | 23.3% | 50.0% | 8.0% |
| Tonbridge and Malling | 100.0% | 13.6% | 0.6% | 25.7% | 22.9% | 32.1% | 3.7% |
| Tunbridge Wells | 100.0% | 25.3% | 1.5% | 21.1% | 12.6% | 31.6% | 6.7% |
| Kent | 100.0% | 14.3% | 1.3% | 15.6% | 20.8% | 40.3% | 6.5% |
| Medway | 100.0% | 6.5% | 1.5% | 14.6% | 12.3% | 61.5% | 7.3% |
| Kent + Medway | 100.0% | 13.3% | 1.3% | 15.6% | 20.0% | 43.3% | 6.7% |
| South East | 100.0% | 10.4% | 1.8% | 10.2% | 15.5% | 53.8% | 8.4% |
| England | 100.0% | 16.3% | 3.3% | 9.3% | 16.6% | 48.0% | 6.6% |

Source: BRES

Presented by: Strategic Commissioning - Analytics, Kent County Council

When looking in greater detail at the individual industries which make up manufacturing in Kent the manufacture of fabricated metal products and the manufacture of food products make up the highest proportion of manufacturing jobs (13.0% each), a similar proportion to that seen nationally (13% and 14.9% respectively). However in Medway it is the manufacture of computer, electronic and optical products which accounts for a quarter of all manufacturing jobs in the area.

Table 13: Detailed Manufacturing industry employees

| 2017 | Kent | Medway | South East | England |
|--|---------------|--------------|----------------|------------------|
| Total Manufacturing jobs | 38,500 | 6,500 | 251,000 | 2,085,500 |
| Food & Drink Manufacture | 14.3% | 6.5% | 10.4% | 16.3% |
| <i>Manufacture of food products</i> | 13.0% | 6.5% | 9.6% | 14.9% |
| <i>Manufacture of beverages</i> | 1.3% | 0.2% | 0.9% | 1.4% |
| Clothing & Textiles Manufacture | 1.3% | 1.5% | 1.8% | 3.3% |
| <i>Manufacture of textiles</i> | 1.1% | 1.1% | 1.5% | 2.4% |
| <i>Manufacture of wearing apparel</i> | 0.2% | 0.5% | 0.4% | 0.8% |
| Wood, Leather & Paper Manufacture | 15.6% | 14.6% | 10.2% | 9.3% |
| <i>Manufacture of leather & related products</i> | 0.2% | 0.2% | 0.2% | 0.3% |
| <i>Manufacture of wood and products of wood or cork except furniture</i> | 3.6% | 2.9% | 2.6% | 2.6% |
| <i>Manufacture of paper and paper products</i> | 5.5% | 0.4% | 1.8% | 2.0% |
| <i>Printing and reproduction of recorded media</i> | 6.2% | 10.8% | 5.4% | 4.3% |
| Petroleum, Chemicals and Plastics | 20.8% | 12.3% | 15.5% | 16.6% |
| <i>Manufacture of coke and refined petroleum products</i> | 0.6% | 0.0% | 0.5% | 0.3% |
| <i>Manufacture of chemicals and chemical products</i> | 7.1% | 1.1% | 5.0% | 4.1% |
| <i>Manufacture of basic pharmaceutical products and preparations</i> | 2.1% | 0.1% | 2.2% | 1.6% |
| <i>Manufacture of rubber and plastic products</i> | 7.8% | 8.5% | 5.6% | 7.3% |
| <i>Manufacture of other non metallic mineral products</i> | 3.6% | 2.6% | 2.2% | 3.3% |
| Advanced Engineering | 40.3% | 61.5% | 53.8% | 48.0% |
| <i>Manufacture of basic metals</i> | 1.1% | 2.6% | 0.6% | 2.5% |
| <i>Manufacture of fabricated metal products except machinery & equipment</i> | 13.0% | 11.5% | 13.3% | 13.0% |
| <i>Manufacture of computer, electronic & optical products</i> | 5.8% | 25.0% | 11.4% | 4.7% |
| <i>Manufacture of electrical equipment</i> | 5.8% | 2.6% | 5.6% | 3.6% |
| <i>Manufacture of machinery & equipment (not classified elsewhere)</i> | 4.9% | 14.6% | 6.8% | 7.8% |
| <i>Manufacture of motor vehicles, trailers and semi-trailers</i> | 3.9% | 0.3% | 5.6% | 6.6% |
| <i>Manufacture of other transport equipment</i> | 0.4% | 0.0% | 3.4% | 5.1% |
| <i>Repair & installation of machinery & equipment</i> | 5.5% | 3.7% | 7.2% | 4.8% |
| Other Manufacture | 6.5% | 7.3% | 8.4% | 6.6% |
| <i>Manufacture of tobacco products</i> | 0.0% | 0.0% | 0.0% | 0.0% |
| <i>Manufacture of furniture</i> | 1.9% | 5.4% | 2.2% | 3.5% |
| <i>Other manufacturing</i> | 4.9% | 2.3% | 6.2% | 3.1% |

Source: BRES

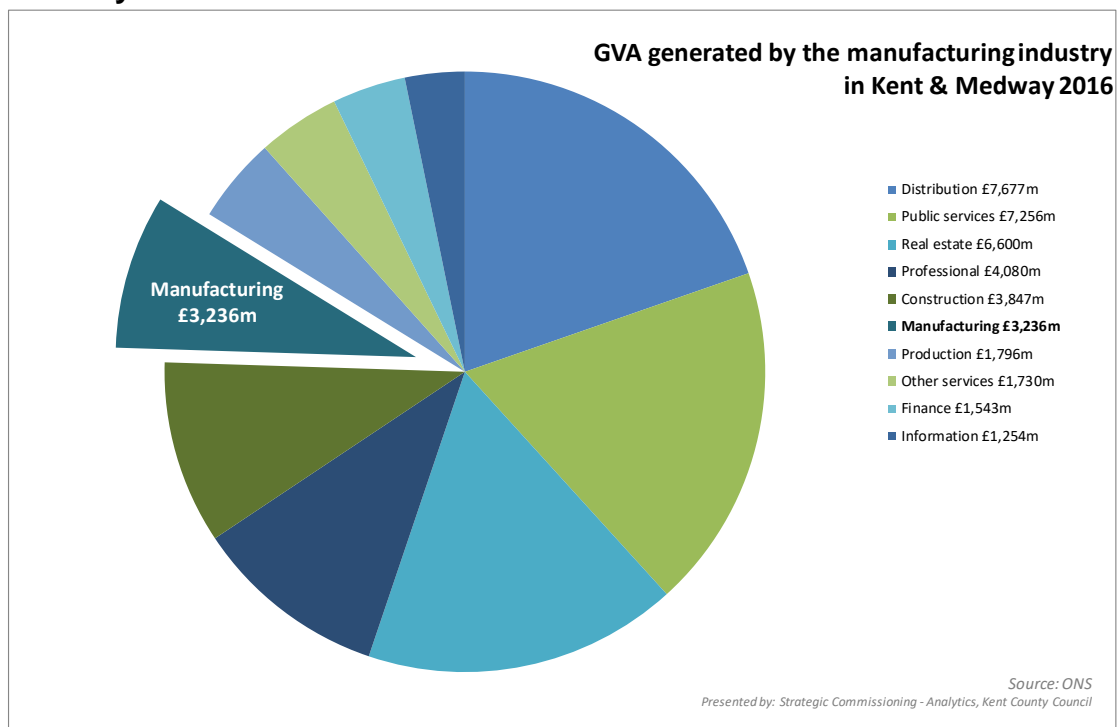
Presented by: Strategic Commissioning - Analytics, Kent County Council

Manufacturing GVA

Gross Value Added (GVA) is a measure of Output i.e. the value of the goods and services produced in the economy. It is primarily used to monitor the performance of the national economy and is now the measure preferred by the Office for National Statistics (ONS) to measure the overall economic well-being of an area. GVA estimates are available by broad industrial group down to local authority district level. The latest estimates are for 2016.

It is estimated that GVA generated by the manufacturing industry (£3,236m) accounted for 8.3% of the total GVA in Kent and Medway in 2016.

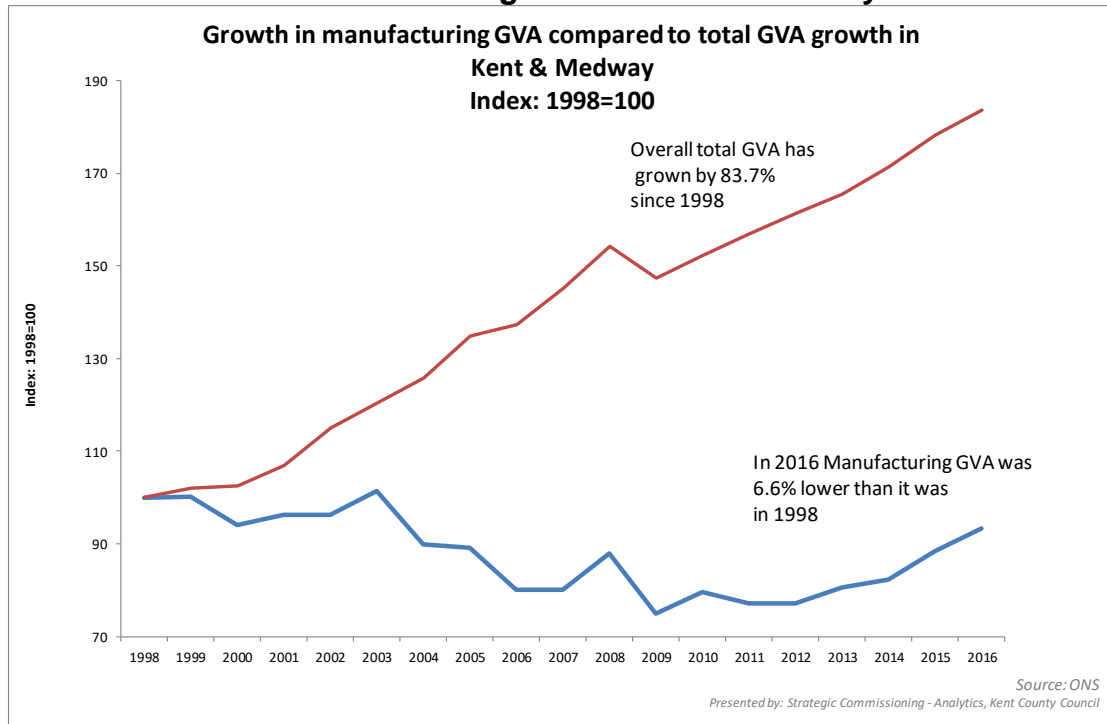
Chart 5: Manufacturing GVA in Kent & Medway



Manufacturing GVA has fallen considerably since 1998. By setting the same starting point for both manufacturing and total GVA (1998=100) we can more clearly see the differences in growth.

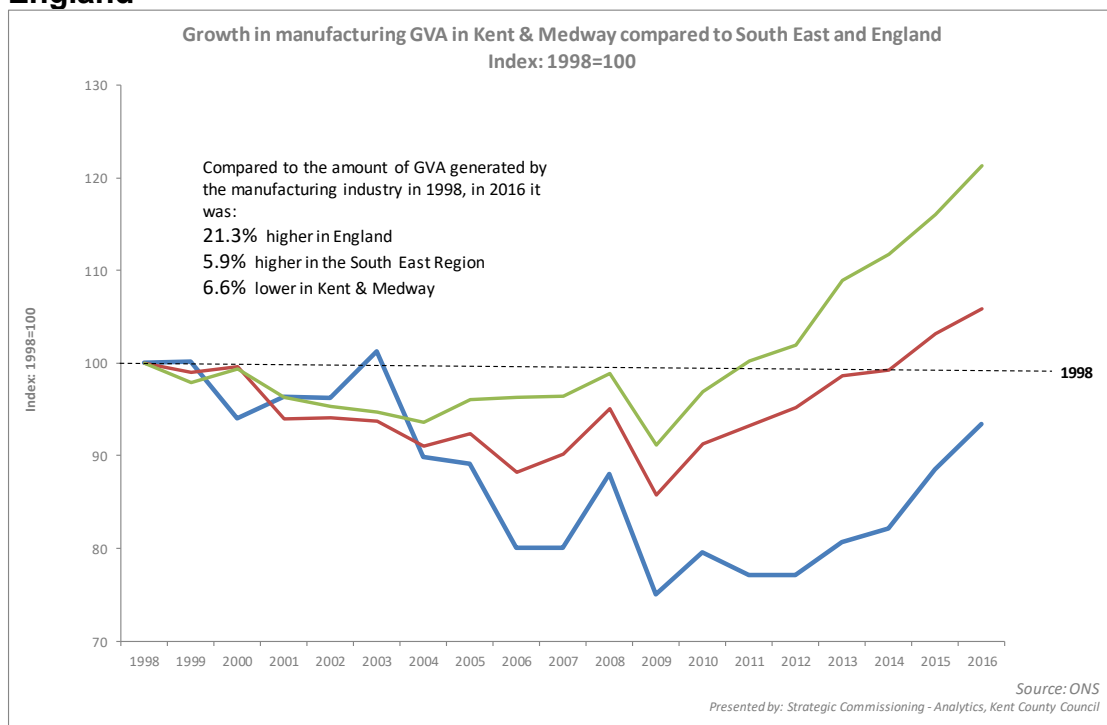
Chart 5 shows that overall in Kent and Medway manufacturing GVA has fallen by 6.6% since 1998, although there has been some growth from 2012.

Chart 6: Growth in manufacturing GVA in Kent & Medway



When compared to the South East and England as a whole Kent and Medway’s manufacturing GVA growth since the recession has been significantly lower and while in recent years it has increased regionally and nationally above its 1998 level, the recovery in Kent and Medway has not been as great and it remains 6.6% lower than in 1998.

Chart 7: Manufacturing GVA growth in Kent & Medway, South East and England



At local authority level Swale had the highest estimated manufacturing GVA in Kent in 2016 (£445) accounting for 15.6% of the total GVA within the district and the highest manufacturing GVA per head of population (£3,068).

Table 14: Manufacturing GVA in Kent local authorities

| 2016 | Total GVA (£m) | Total GVA per head (£) | Manufacturing (£m) | Manufacturing GVA per head (£) |
|--------------------------|----------------|------------------------|--------------------|--------------------------------|
| Ashford | 2,876 | 22,798 | 325 | 2,576 |
| Canterbury | 3,222 | 19,838 | 120 | 739 |
| Dartford | 3,174 | 30,073 | 205 | 1,942 |
| Dover | 1,846 | 16,161 | 175 | 1,532 |
| Folkestone & Hythe | 2,104 | 18,923 | 120 | 1,124 |
| Gravesham | 1,823 | 17,068 | 240 | 1,443 |
| Maidstone | 3,842 | 23,094 | 276 | 2,317 |
| Sevenoaks | 3,204 | 26,892 | 215 | 1,934 |
| Swale | 2,849 | 19,643 | 445 | 3,068 |
| Thanet | 2,141 | 15,222 | 197 | 1,401 |
| Tonbridge and Malling | 3,690 | 28,988 | 230 | 1,807 |
| Tunbridge Wells | 3,047 | 26,027 | 154 | 1,315 |
| Kent | 33,818 | 21,933 | 2,702 | 1,752 |
| Medway | 5,203 | 18,679 | 534 | 1,917 |
| Kent & Medway | 39,021 | 21,435 | 3,236 | 1,778 |
| South East | 258,902 | 28,683 | 20,042 | 2,220 |
| England | 1,498,221 | 27,108 | 146,509 | 2,651 |

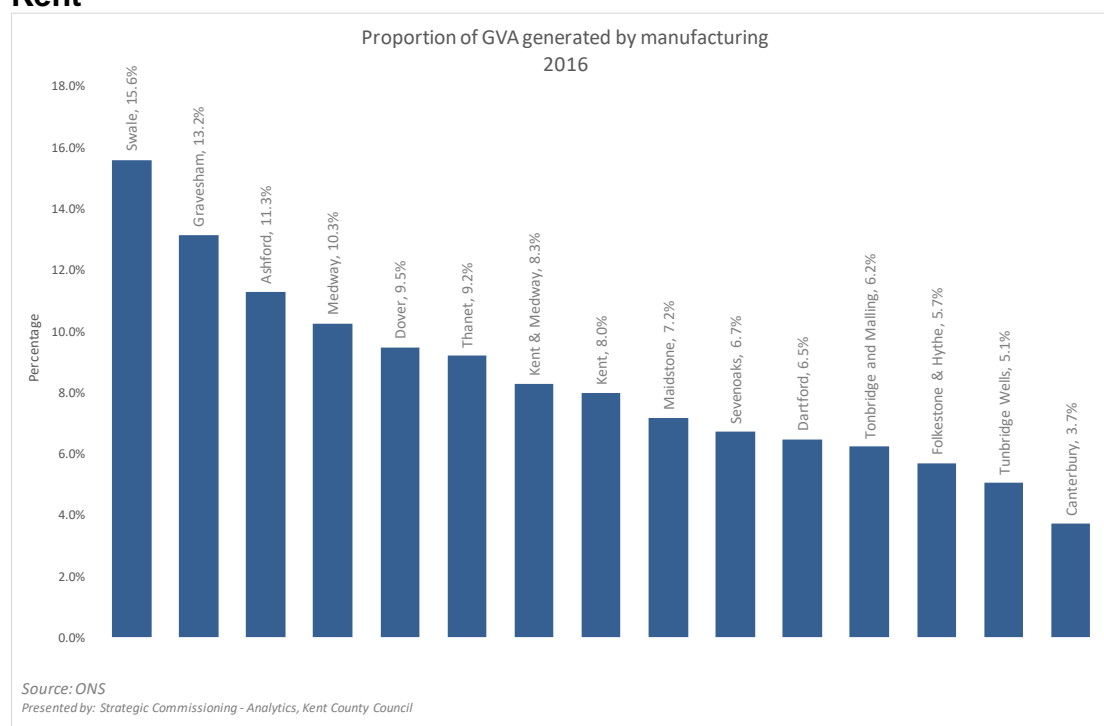
Source: ONS

Presented by: Strategic Commissioning - Analytics, Kent County Council

Canterbury district had the smallest proportion of manufacturing GVA, accounting for 3.7% of the overall GVA generated in the district.

The proportion of GVA generated by manufacturing in Kent local authority districts, Kent and Medway is shown in chart 7.

Chart 8: Percentage of GVA generated by manufacturing industries in Kent



Manufacturing Industry Occupations

Information about the occupations in which residents work is available from the 2011 Census from ONS. This enables us to look at some industry specific occupations related to Manufacturing. The data gives us information based upon residence or work place i.e. it can tell us about people who work in an area (but may not necessarily live there) and people who live in an area (but may not necessarily live there).

7.0% of population working in Kent worked in manufacturing occupations at the time of the Census.

Swale district had the highest number (6,635) and proportion (12.7%) of workers working in manufacturing occupations in Kent.

Table 16 shows the occupational groups of workers working in manufacturing. A higher proportion (23.6%) of manufacturing workers in Kent were working in skilled trades occupations than the national average (22.5%).

These occupations include metal forming, machining and fitting, metal instrument making, textiles and printing trades and skilled food preparation.

Table 15: Employment in Manufacturing occupations, 2011 – workplace based

| 2011 Census | All in employment | Employed in manufacturing | % employed in manufacturing |
|-----------------------|-------------------|---------------------------|-----------------------------|
| Ashford | 54,618 | 5,035 | 9.2% |
| Canterbury | 66,713 | 2,868 | 4.3% |
| Dartford | 54,972 | 3,369 | 6.1% |
| Dover | 43,282 | 3,179 | 7.3% |
| Folkestone and Hythe | 44,250 | 1,948 | 4.4% |
| Gravesham | 32,015 | 2,472 | 7.7% |
| Maidstone | 76,795 | 4,358 | 5.7% |
| Sevenoaks | 46,402 | 3,471 | 7.5% |
| Swale | 52,439 | 6,635 | 12.7% |
| Thanet | 47,538 | 3,506 | 7.4% |
| Tonbridge and Malling | 60,126 | 4,502 | 7.5% |
| Tunbridge Wells | 54,985 | 2,765 | 5.0% |
| Kent | 634,135 | 44,108 | 7.0% |
| Medway | 98,648 | 8,340 | 8.5% |
| Kent & Medway | 732,783 | 52,448 | 7.2% |
| South East | 4,063,350 | 306,762 | 7.5% |
| England | 25,087,843 | 2,214,020 | 8.8% |

Source: 2011 Census; Table WP6604EW - Occupation by Industry

Presented by: Strategic Commissioning - Analytics, Kent County Council

Table 16: Occupations of those working in Manufacturing industry, 2011 – workplace based

| 2011 Census | Kent | Medway | South East | England |
|---|---------------|--------------|----------------|------------------|
| Total manufacturing occupations | 44,108 | 8,340 | 306,762 | 2,214,020 |
| <i>Managers, directors and senior officials</i> | 12.8% | 10.6% | 13.9% | 11.9% |
| <i>Professional occupations</i> | 8.3% | 13.5% | 13.3% | 10.0% |
| <i>Associate professional and technical occupations</i> | 12.1% | 13.4% | 14.7% | 11.5% |
| <i>Administrative and secretarial occupations</i> | 9.1% | 8.0% | 9.2% | 7.9% |
| <i>Skilled trades occupations</i> | 23.6% | 24.5% | 21.4% | 22.5% |
| <i>Caring, leisure and other service occupations</i> | 0.7% | 0.6% | 0.6% | 0.6% |
| <i>Sales and customer service occupations</i> | 2.5% | 1.8% | 2.5% | 2.2% |
| <i>Process, plant and machine operatives</i> | 21.2% | 18.8% | 17.2% | 24.0% |
| <i>Elementary occupations</i> | 9.7% | 8.8% | 7.1% | 9.4% |

Source: 2011 Census; Table WP6604EW - Occupation by Industry

Presented by: Strategic Commissioning - Analytics, Kent County Council

As at 2011 6.7% of the working population of Kent were working in manufacturing industry occupations, below the national average of 8.9%. Swale district had the highest number working in manufacturing (6,526) accounting for 10.3% of residents in employment.

Folkestone and Hythe had the fewest residents working in manufacturing (2,526).

Table 17: Employment in Manufacturing occupations, 2011 – residence based

| 2011 Census | All in employment | Employed in manufacturing | % employed in manufacturing |
|-----------------------|--------------------------|----------------------------------|------------------------------------|
| Ashford | 57,956 | 5,018 | 8.7% |
| Canterbury | 66,079 | 3,382 | 5.1% |
| Dartford | 49,818 | 3,230 | 6.5% |
| Dover | 50,716 | 2,968 | 5.9% |
| Folkestone and Hythe | 48,639 | 2,526 | 5.2% |
| Gravesham | 47,868 | 3,593 | 7.5% |
| Maidstone | 78,511 | 5,198 | 6.6% |
| Sevenoaks | 56,499 | 3,195 | 5.7% |
| Swale | 63,118 | 6,526 | 10.3% |
| Thanet | 55,589 | 4,156 | 7.5% |
| Tonbridge and Malling | 60,326 | 4,107 | 6.8% |
| Tunbridge Wells | 57,630 | 2,825 | 4.9% |
| Kent | 692,749 | 46,724 | 6.7% |
| Medway | 127,127 | 9,660 | 7.6% |
| Kent & Medway | 819,876 | 56,384 | 6.9% |
| South East | 4,288,569 | 308,974 | 7.2% |
| England | 25,308,888 | 2,242,259 | 8.9% |

Source: 2011 Census; Table DC6604EW - Occupation by Industry

Presented by: Strategic Commissioning - Analytics, Kent County Council

Table 18 shows the occupational groups of Kent residents working in manufacturing. A higher proportion (23.7%) were working in skilled trades occupations than the national average (22.5%).

These occupations include metal forming, machining and fitting, metal instrument making, textiles and printing trades and skilled food preparation.

Table 18: Occupations of those working in Manufacturing industry, 2011 – residence based

| 2011 Census | Kent | Medway | South East | England |
|---|---------------|--------------|----------------|------------------|
| Total manufacturing occupations | 46,724 | 9,660 | 308,974 | 2,242,259 |
| <i>Managers, directors and senior officials</i> | 13.6% | 9.6% | 14.5% | 11.9% |
| <i>Professional occupations</i> | 9.2% | 10.1% | 13.1% | 10.0% |
| <i>Associate professional and technical occupations</i> | 12.5% | 12.7% | 14.4% | 11.4% |
| <i>Administrative and secretarial occupations</i> | 9.0% | 8.2% | 9.3% | 7.9% |
| <i>Skilled trades occupations</i> | 23.7% | 26.2% | 21.6% | 22.5% |
| <i>Caring, leisure and other service occupations</i> | 0.7% | 0.7% | 0.6% | 0.6% |
| <i>Sales and customer service occupations</i> | 2.4% | 1.9% | 2.4% | 2.2% |
| <i>Process, plant and machine operatives</i> | 20.0% | 21.1% | 17.0% | 24.0% |
| <i>Elementary occupations</i> | 9.0% | 9.7% | 7.0% | 9.4% |

Source: 2011 Census; Table DC6604EW - Occupation by Industry

Presented by: Strategic Commissioning - Analytics, Kent County Council

Qualifications

Information about the highest level of qualifications held by people who work in Kent is available from the 2011 Census from ONS. The data gives us information based upon work place and industry.

The level of qualifications as used in the 2011 Census are:

| | |
|---|---|
| Level 1 | 1-4 O Levels/CSE/GCSEs (any grades), Entry Level, Foundation Diploma, NVQ Level 1, Foundation GNVQ, Basic/Essential Skills; |
| Level 2 | 5+ O Level (Passes)/CSEs (Grade 1)/GCSEs (Grades A*-C), School Certificate, 1 A Level/ 2-3 AS Levels/VCEs, Intermediate/Higher Diploma, Welsh Baccalaureate Intermediate Diploma, NVQ level 2, Intermediate GNVQ, City and Guilds Craft, BTEC First/General Diploma, RSA Diploma; |
| Level 3 | 2+ A Levels/VCEs, 4+ AS Levels, Higher School Certificate, Progression/Advanced Diploma, Welsh Baccalaureate Advanced Diploma, NVQ Level 3; Advanced GNVQ, City and Guilds Advanced Craft, ONC, OND, BTEC National, RSA Advanced Diploma; |
| Level 4 and above | Degree (for example BA, BSc), Higher Degree (for example MA, PhD, PGCE), NVQ Level 4-5, HNC, HND, RSA Higher Diploma, BTEC Higher level, Foundation degree (NI), Professional qualifications (for example teaching, nursing, accountancy); |
| Apprenticeships and other qualifications | Apprenticeship, Vocational/Work-related Qualifications, Foreign Qualifications (not stated/level unknown). |

20.4% of people working in manufacturing in Kent were qualified to level 4 and above, below the national average of 23.9% and the regional average of 30%.

A higher proportion have lower qualifications (up to level 2) than seen nationally.

Table 19: People working in manufacturing by highest qualification – workplace based

| | Kent | Medway | South East | England |
|---|---------------|--------------|----------------|------------------|
| Highest level of qualification | 44,108 | 8,340 | 306,762 | 2,214,020 |
| <i>No qualifications</i> | 14.8% | 14.1% | 11.5% | 15.1% |
| <i>Level 1 qualifications</i> | 19.0% | 18.0% | 16.0% | 16.9% |
| <i>Level 2 qualifications</i> | 17.0% | 14.9% | 14.8% | 15.5% |
| <i>Level 3 qualifications</i> | 13.3% | 12.5% | 13.5% | 13.4% |
| <i>Level 4 qualifications and above</i> | 20.4% | 23.9% | 30.0% | 23.9% |
| <i>Apprenticeships and other qualifications</i> | 15.4% | 16.6% | 14.2% | 15.3% |

Source: 2011 Census; Table WP6503EW - Industry by highest level of qualification

Presented by: Strategic Commissioning - Analytics, Kent County Council

Graduates finding employment in Manufacturing

The graduate leavers data is taken from an annual survey conducted by the Higher Education Statistics Agency (HESA). This survey is undertaken on completion of their course of study and is voluntary. Although the survey is on a voluntary basis, there is a consistently high response rate each year of around 85% of all leavers.

Table 20: Graduates finding employment in manufacturing in Kent & Medway

| | 2013/14 | 2014/15 | 2015/16 | 2016/17 |
|-----------------------------------|------------|------------|------------|------------|
| Total Manufacturing | 215 | 155 | 175 | 205 |
| Food & Drink Manufacture | 15 | 10 | 25 | 20 |
| Clothing & Textiles Manufacture | 5 | 5 | 5 | 10 |
| Wood, Leather & Paper Manufacture | 20 | 25 | 20 | 25 |
| Petroleum, Chemicals and Plastics | 50 | 45 | 40 | 50 |
| Advanced Engineering | 85 | 45 | 70 | 85 |
| Other Manufacture | 40 | 25 | 20 | 20 |

Source: HESA

Presented by: Strategic Commissioning - Analytics, Kent County Council

Of the 5,705 graduate leavers who found employment in Kent & Medway in 2016/17, 205 found employment in manufacturing industries. 40% of those manufacturing jobs were in advanced engineering.

Chart 9: Proportion of graduates by manufacturing type

