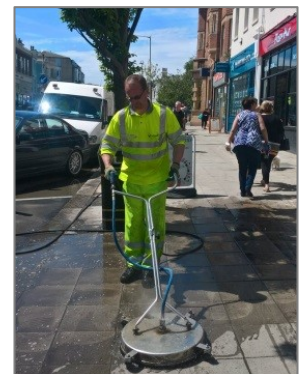
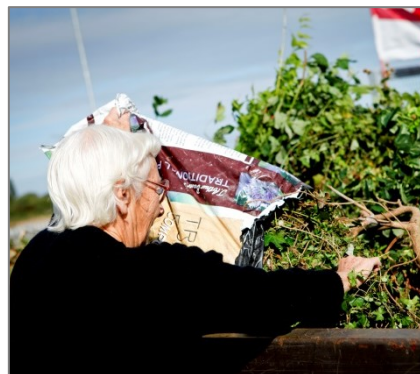


# Kent Resource Partnership

Consultation on refreshing the Kent Joint Municipal  
Waste Management Strategy (KJMWMS)

Views welcome by 5pm, Friday 26 March 2021.



# Contents

Background	3
Why do we need to refresh the KJMWMS?	4
Why refresh the KJMWMS now?	4
Who is expected to respond to this consultation?	4
<b>As a consultee, what would you like our views on?</b>	<b>4</b>
Where can I find the current KJMWMS and full list of consultation questions?	5
Where can I find further information on the KRP?	5
Who do I send my response to, and in what format?	5
What are the timescales?	5
Overarching Vision and Strategic Mission Statement	6
Policies & Policy Objectives - Maximising the Value of Resources	8
Policies & Policy Objectives - Value for Money for Kent Taxpayers	10
Policies & Policy Objectives - Engagement, Collaboration and Partnership Working	12
Policies & Policy Objectives - Future Thinking	14
<b>KJMWMS – Current Strategy &amp; Full List of Questions</b>	<b>16</b>
Partnership Performance	20
Further Information & Contact Details	22

## Background

The Kent Resource Partnership (KRP) consists of the 13 Kent councils.

These are (in alphabetical order): - Ashford Borough Council, Canterbury City Council, Dartford Borough Council, Dover District Council, Folkestone & Hythe District Council, Gravesham Borough Council, Kent County Council, Maidstone Borough Council, Sevenoaks District Council, Swale Borough Council, Thanet District Council, Tonbridge & Malling Borough Council and Tunbridge Wells Borough Council.

The purpose of the KRP is to deliver the following three strategic objectives: -

- Deliver the Kent Joint Municipal Waste Management Strategy (KJMWMS). This KJMWMS was adopted in 2007 to manage Kent's municipal waste. It has since been refreshed in 2012 and 2017;
- Deliver financial and performance benefits to Kent taxpayers; and manage risks to finance and performance as appropriate; and
- Contribute to, and set a national lead, in delivering projects that manage supply chain issues in the leanest and most effective ways; securing value from discarded materials; and proactively identifying innovation and excellent practices.



## **Why do we need to refresh the KJMWMS?**

The KJMWMS was last refreshed in 2017/18. Since then, the resource and waste landscape continues to evolve. Some of the recent changes to note are -

- In December 2018, Government published its Resource & Waste Strategy. This outlined key policy changes that would affect councils' services. This includes policies on extended producer responsibility on packaging, introducing a deposit return scheme and achieving great consistency on household recycling & waste collections;
- In May 2019, many Kent councils had elections which saw the membership at KRP Member level change; and
- During 2019, Kent councils declared climate emergencies or set targets to reduce its carbon emissions.

Given the impacts of COVID-19, it's likely this will hugely impact on Kent councils' resource management and waste services in the future too.

## **Why refresh the KJMWMS now?**

In early 2020, KRP staff took forward a round robin meeting exercise with each of the 13 Kent councils lead Members and Officers. One of the key outcomes from these meetings highlighted there was a wish for the KRP to take the proactive approach to refresh its KJMWMS.

On 09 July 2020, the KRP Members Board agreed for KRP staff to lead on this process.

## **Who is expected to respond to this consultation?**

Any individual or organisation may wish to respond to this consultation – we welcome all views. Over a number of years, the KRP has had a positive track record with working with a wider range of stakeholders across the resources sector and supply chain. The type of consultees who may choose to respond are, but not limited to the following: - packaging designers & producers; retailers; waste management companies; reprocessors; Local Government; Government; environmental groups & charities etc.

## **As a consultee, what would you like views on?**

For the purposes of this consultation our KJMWMS is split into five segments. Within each segment there is a latest update our activities/projects, key policies within that segment and a number of consultation questions to answer. As a stakeholder of the KRP, we welcome your views.

## Where can I find the current KJMWMS and full list of consultation questions?

To support consultees with their response, the current KJMWMS along with the full list of consultation questions is also available within this document from page 16.

## Where can I find further information on the KRP?

The KRP has plenty of supporting information available on its web pages within Kent CC's website. The helpful web link is - [www.kent.gov.uk/krp](http://www.kent.gov.uk/krp). Partnership performance from 2015/16 to 2019/20 is also available within this document from page 20. If there were something specific, you would wish to know about the KRP, please email Paldeep Bhatti, KRP Manager on [Paldeep.bhatti@kentrp.org.uk](mailto:Paldeep.bhatti@kentrp.org.uk).

## Who do I send my response to, and in what format?

It is encouraged for consultees to submit their responses to Paldeep Bhatti, KRP Manager by email to [Paldeep.bhatti@kentrp.org.uk](mailto:Paldeep.bhatti@kentrp.org.uk). To be considered, consultee responses should have name of sender, contact details, and organisation represented as appropriate. So long as the layout of your email (and any attachment) is clear on how responses relate to the issues raised in the consultation, the format is of your personal choice.

Should you wish to receive this consultation document in any alternative formats, please contact Paldeep Bhatti, KRP Manager.

## What are the timescales?

The deadline for consultation responses is no later than **5pm, Friday 26 March 2021**.

Detailed timescales are below-

- 25 January to 26 March: Consultation open (9 weeks).
- 25 February: KRP Members Board - initial update on consultation responses.
- 08 July: KRP Members Board – refreshed KJMWMS to Members for approval.
- July onwards: Each of the 13 Kent councils to adopt the refreshed KJMWMS via respective decision-making bodies as appropriate.



## Overarching Vision and Strategic Mission Statement

Over the years, we have continued to build on our successes and reputation as a leading local authority resource partnership. We champion changing the perception of waste to one that considers it a valuable resource. This was reflected in our name change a number of years ago which saw us change from the 'Kent Waste Partnership' to the 'Kent Resource Partnership' – this shift was nationally recognised and welcome by many within the resource industry at the time.

As part of this strategy, we aim to ensure resource and waste management

services are fit to serve our residents for the future. This included taking on board key policies from the Government's Resource Waste Strategy – including extended producer responsibility on packaging, introduction of a deposit return scheme and consistency on household recycling & waste collections.

We continue to place great emphasis on capturing high quantity, high quality resources while providing the best possible service to our residents. We also welcome any views on how we could go further to support our residents.



Our existing vision and strategic mission statement is as below: -

<b>Overarching Vision</b>
The Kent Resource Partnership (KRP) will lead the transformation to a circular economy, where the value of material resources flowing into and through Kent are retained, generating employment, skills and training opportunities, and realising wider economic, environmental, health and wellbeing benefits for the local and regional community and beyond.
<b>Strategy Mission Statement</b>
<p>We are committed to delivering efficiency and quality in our resource management and waste services, with focus on: -</p> <ul style="list-style-type: none"><li>• Maximising the ‘value’ of resources that we manage from households, in terms of realising the social, environmental and economic opportunities;</li><li>• Providing the best possible value for money service to the Kent taxpayer, taking into account whole service costs;</li><li>• Realising opportunities to improve services now and in the future through engagement, collaboration and working in partnership with the supply chain; and</li><li>• Supporting future thinking through ongoing research and evidence that will facilitate the transition into a circular economy for Kent.</li></ul>

We welcome your views on the above with the following questions in mind: -

- 1) What changes would you make to the existing overarching vision? How could we go further?**
- 2) What changes would you make to the existing strategic mission statement? How could we go further?**
- 3) Looking ahead to the future, are there any gaps that we need to consider?**

# Policies & Policy Objectives

## 1. Maximising the Value of Resources

Over the years, we have made collective progress against policies. Our provisional performance to date is as below: -

- **Kent residual household waste per household** – 580.0 tonnes was recorded in 2013/14. This has generally decreased year on year and in 2019/20, was recorded at 528.6 tonnes.
- **Kent overall recycling & composting rate** – 43.6% of Kent's household waste was recycled & composted in 2013/14. This has seen progress – with a degree of variation – and in 2019/20 was recorded at 46.7%.
- **Diversion from landfill** – 18.2% of Kent's municipal waste was sent to landfill in 2013/14. This has seen a significant improvement and in 2019/20, as little as 1.5% was sent to landfill.

We continue our fight to tackle litter and maximise recycling opportunities on the go. We have piloted these types of initiatives and will learn from national good practice working together with the supply chain.

We continue to annually publish full details on where our recycling & waste. The latest publication for 2018/19, reflects just over 711,000 tonnes was handled by the 13 Kent councils. 76.2% was sorted and processed within Kent, 14.3% sent to others parts of the UK with 9.5% sent abroad. In order to maintain trust with our residents, this year we have been exploring alternative ways to share data more clearly with our residents, particularly via social media. We hope this level of transparency can help facilitate greater levels of performance in the years ahead.





Our existing policies on this section is as below: -

<b>1.</b>	<b>Maximising the Value of Resources</b>
1.1	Up until 2020/21, the KRP will achieve a year on year reduction to its Kent-wide residual household waste per household (kg/h'hold) tonnage. [Note: measured using the ex NI191 as published by Defra's waste statistics annually].
1.2	By 2020/21, the KRP will recycle and compost at least 50% of household waste tonnage. [Note: measured using the ex NI192 as published by Defra's waste statistics annually].
1.3	By 2020/21, the KRP will ensure no more than 2% of Kent's municipal waste ends at landfill. [Note: measured using the ex NI193 as published by Defra's waste statistics annually].
1.4	By 2020/21, the KRP will develop a joint approach to facilitate the procurement of third sector/reuse providers/charities in managing and delivering a reuse service for bulky waste.
1.5	The KRP will explore the possibility of implementing recycling on-the-go initiatives, and other similar activities aimed at recovering resources and help reduce litter. The KRP will also look to engage and work with the supply chain to deliver recycling on-the-go in key areas of high footfall e.g. towns, beaches etc.
1.6	The KRP will publish its Materials End Destinations Publication on an annual basis and continue its transparent approach to reflect where all material resources end up.

We welcome your views on the above with the following questions in mind: -

**4) What changes would you make to the policies 1.1 to 1.6?**

**5) How could we progress these policies further?**

**6) Looking ahead to the future, are there any gaps that we need to consider?**

## Policies & Policy Objectives

### 2. Value for Money for Kent Taxpayers

As a collective of councils, we continue to strive towards providing the best possible value for money to our taxpayers. In March 2019, Tonbridge & Malling BC and Tunbridge Wells BC began its new joint recycling, waste collection and street cleansing services contract with Urbaser. The new service includes:- weekly collection of food; fortnightly collection of residual waste; alternative weekly collection of mixed dry recyclables and separate fortnightly collection of garden waste as an opt-in chargeable service; and additional collections of textiles, household batteries and WEEE.

This new services aligns with the majority of other councils in Kent.

We also continue to tackle waste crime, to help keep Kent clean. We are making progress towards an intelligence-led culture, strengthen relationships with Kent Police, the Environment Agency and the National Farmers Union (NFU). Some key activities include: - facilitating community litter picks as part of national campaigns, delivery 'days of action' to disturb fly tippers, launched a Keep Kent Clean Duty of Care campaign as well as organising training opportunities for local businesses.



Our existing policies on this section is as below: -

<b>2.</b>	<b>Value for Money for Kent Taxpayers</b>
2.1	The KRP will deliver value for money to Kent residents by maximising joint service delivery opportunities between its councils; cross-boundary working and ensuring all opportunities to realise economy of scale savings through procurement exercises are delivered.
2.2	The KRP will continue to build on its reputation as a leading resource partnership and work with the supply chain to deliver research projects, services and campaigns. As with previous successes, the KRP will continue to seek external funding opportunities, where possible.
2.3	The KRP will retain its focus on food waste as a priority waste stream and support, through the sharing of good practice and identification of joint opportunities, separate collection for discarded food waste on a weekly basis for all residents by 2020/21 where possible.
2.4	The KRP will develop a joint approach to tackling littering, fly-tipping and other related enviro-crimes which would be underpinned by creating a culture of sharing high quality intelligence within the KRP and with others where appropriate e.g. Highways England, Environment Agency, Kent Police, neighbouring local authorities and others.
2.5	The KRP will facilitate the sharing of resources both in terms of communication campaigns linked to priority actions and focus areas, and in terms of ensuring local intelligence and information can be shared across the County.
2.6	The KRP will support its councils in ensuring first class health and safety standards are maintained across the County. This includes employees (& potential employees) have the skills, training and competencies to meet the increasingly technical requirements of the resource management and waste sector.

We welcome your views on the above with the following questions in mind: -

**7) What changes would you make to the policies 2.1 to 2.6?**

**8) How could we progress these policies further?**

**9) Looking ahead to the future, are there any gaps that we need to consider?**



## Policies & Policy Objectives

### 3. Engagement, Collaboration and Partnership Working

One of our core strengths is our willingness to work together and with other stakeholders to achieve shared goals.

In 2018/19, Swale BC and Thanet DC partnered with WRAP to deliver a food recycling campaign. WRAP invested £160k in total across both councils with the aims to: - recycle more food, reduce the amount of food going to Allington Energy from Waste facility and reduce contamination. Residents across both council areas received: - free caddy liners, a bin sticker for the residual bin and a food-recycling leaflet. Key messages were also supplemented on councils' social media.

In recent years, we have also made great strides to keep Kent clean and tackle waste crime, particularly fly tipping and littering. Jointly funded with Kent CC, we've recruited an Intelligence Analyst to work with councils' enforcement colleagues to gather vital evidence, support enforcement action taken forward by councils, coordinate 'days of actions' on suspected fly tippers and be one of the key links between councils

and Kent Police, Environment Agency and the National Farmers Union (NFU). We have also benefited from additional funding from Kent CC in recent years. This has been invested: - covert cameras and place in hot spot areas; Kent Police resource to support councils' enforcement 'days of action'; a 'Keep Kent Clean' communications campaign; training to local businesses to make them aware of their responsibilities and helped facilitate dialogue with court magistrates to ensure appropriate action is taken against waste criminals. Further progress is expected over the coming years and will be underpinned by intelligence.

In December 2020, we published our annual report for 2019/20. The report highlighted the our progress on various activities. Of the 711,000 tonnes handled in Kent – 46.7% sent for recycling, 51.8% to energy and 1.5% to landfill. The total cost of waste resource management across the 13 Kent councils was just over £102 million – that averaged £158 per household per year or just £3 a week per household. Another £15 million was invested in keeping Kent clean.





Our existing policies on this section is as below: -

<b>3.</b>	<b>Engagement, Collaboration and Partnership Working</b>
3.1	The KRP will identify opportunities for joint working and realise greater efficiency savings. This to be achieved by maximising on economies of scale and implementing good practice across all aspects of its resource management and waste services, in partnership with both its own councils and through developing new relationships across the supply chain.
3.2	The KRP will continue to maximise engagement with national and local government and those operating across the supply chain, and wider industry bodies through representation on forums, networks, working groups, and through its own Annual Conference.
3.3	The KRP will produce an Annual Report that reflects the focus and priorities of the previous financial year in delivering the KJMWMS, and any other activities within its remit.
3.4	The KRP will maintain a publically available Operating Framework that defines its scope, remit and procedures; review its continued operation at least in 2019 and 2024, or any other times as agreed by the KRP.
3.5	The KJMWMS will be fully reviewed in 2021/22; or at any other times as agreed by the KRP; or in accordance with any changes in legislation relating to such strategies.

We welcome your views on the above with the following questions in mind: -

**10) What changes would you make to the policies 3.1 to 3.5?**

**11) How could we progress these policies further?**

**12) Looking ahead to the future, are there any gaps that we need to consider?**

## Policies & Policy Objectives

### 4. Future Thinking

This consultation process will help shape our strategic direction over the coming years. It would look to prepare us ahead of fundamental policy changes set by Government as well as plan for the future of resource and waste management over the long term.

Following the launch of Government's Resource & Waste Strategy in 2018, we have worked with a range of stakeholders to submit coordinated responses to key consultations.

Along with many stakeholders across the supply chain, we look forward to continued engagement with Government. The next round of consultations expected in 2021 will provide further opportunities and clarity needed to achieve future targets.

We welcome any further views on our strategy, particularly as we come through the pressures from the COVID-19 pandemic and our collective battle to tackle the climate crisis.



Our existing policies on this section is as below: -

<b>4.</b>	<b>Future Thinking</b>
4.1	<p>The KRP will research activities that will provide an evidence base to enable a more detailed review of the KJMWMS from 2021/22 onwards. This would include focus on:-</p> <ul style="list-style-type: none"><li>• Aligning with key policies such as the EU Circular Economy Package, 25 Year Environment Plan and the imminent Resource &amp; Waste Strategy. In addition, to maintain a flexible approach to other potential changes that may come from Extended Producer Responsibility (EPR) reform, Deposit Return Schemes (DRS), single-use plastic charges etc.</li><li>• Exploring the possibility of extending the partnership and reviewing potential opportunities for greater cross-boundary working;</li><li>• Considering requirements to secure infrastructure to enhance and develop the network of local resource management and waste facilities. This may include the development of consistent collection specifications across all councils as a means to attract future investment and infrastructure.</li><li>• Developing other metrics and means to focus on quality and value of resources as opposed to traditional weight based targets; and</li><li>• Target material streams and/or specific sectors in order to identify and implement management options within a more circular context.</li></ul>

We welcome your views on the above with the following questions in mind: -

- 13) What changes would you make to the policy 4.1?**
- 14) How could we progress this further?**
- 15) Looking ahead to the future, are there any gaps that we need to consider?**

## KJMWMS – Current Strategy & Full List of Questions

Overarching Vision	
The Kent Resource Partnership (KRP) will lead the transformation to a circular economy, where the value of material resources flowing into and through Kent are retained, generating employment, skills and training opportunities, and realising wider economic, environmental, health and wellbeing benefits for the local and regional community and beyond.	
Strategy Mission Statement	
We are committed to delivering efficiency and quality in our resource management and waste services, with focus on: -	
<ul style="list-style-type: none"> <li>• Maximising the ‘value’ of resources that we manage from households, in terms of realising the social, environmental and economic opportunities;</li> <li>• Providing the best possible value for money service to the Kent taxpayer, taking into account whole service costs;</li> <li>• Realising opportunities to improve services now and in the future through engagement, collaboration and working in partnership with the supply chain; and</li> <li>• Supporting future thinking through ongoing research and evidence that will facilitate the transition into a circular economy for Kent.</li> </ul>	
Policies & Policy Objectives	
1.	Maximising the Value of Resources
1.1	Up until 2020/21, the KRP will achieve a year on year reduction to its Kent-wide residual household waste per household (kg/h’hold) tonnage. [Note: measured using the ex NI191 as published by Defra’s waste statistics annually].
1.2	By 2020/21, the KRP will recycle and compost at least 50% of household waste tonnage. [Note: measured using the ex NI192 as published by Defra’s waste statistics annually].
1.3	By 2020/21, the KRP will ensure no more than 2% of Kent’s municipal waste ends at landfill. [Note: measured using the ex NI193 as published by Defra’s waste statistics annually].
1.4	By 2020/21, the KRP will develop a joint approach to facilitate the procurement of third sector/reuse providers/charities in managing and delivering a reuse service for bulky waste.
1.5	The KRP will explore the possibility of implementing recycling on-the-go initiatives, and other similar activities aimed at recovering resources and help reduce litter. The KRP will also look to engage and work with the supply chain to deliver recycling on-the-go in key areas of high footfall e.g. towns, beaches etc.
1.6	The KRP will publish its Materials End Destinations Publication on an annual basis and continue its transparent approach to reflect where all material resources end up.



<b>2.</b>	<b>Value for Money for Kent Taxpayers</b>
2.1	The KRP will deliver value for money to Kent residents by maximising joint service delivery opportunities between its councils; cross-boundary working and ensuring all opportunities to realise economy of scale savings through procurement exercises are delivered.
2.2	The KRP will continue to build on its reputation as a leading resource partnership and work with the supply chain to deliver research projects, services and campaigns. As with previous successes, the KRP will continue to seek external funding opportunities, where possible.
2.3	The KRP will retain its focus on food waste as a priority waste stream and support, through the sharing of good practice and identification of joint opportunities, separate collection for discarded food waste on a weekly basis for all residents by 2020/21 where possible.
2.4	The KRP will develop a joint approach to tackling littering, fly-tipping and other related enviro-crimes which would be underpinned by creating a culture of sharing high quality intelligence within the KRP and with others where appropriate e.g. Highways England, Environment Agency, Kent Police, neighbouring local authorities and others.
2.5	The KRP will facilitate the sharing of resources both in terms of communication campaigns linked to priority actions and focus areas, and in terms of ensuring local intelligence and information can be shared across the County.
2.6	The KRP will support its councils in ensuring first class health and safety standards are maintained across the County. This includes employees (& potential employees) have the skills, training and competencies to meet the increasingly technical requirements of the resource management and waste sector.
<b>3.</b>	<b>Engagement, Collaboration and Partnership Working</b>
3.1	The KRP will identify opportunities for joint working and realise greater efficiency savings. This to be achieved by maximising on economies of scale and implementing good practice across all aspects of its resource management and waste services, in partnership with both its own councils and through developing new relationships across the supply chain.
3.2	The KRP will continue to maximise engagement with national and local government and those operating across the supply chain, and wider industry bodies through representation on forums, networks, working groups, and through its own Annual Conference.
3.3	The KRP will produce an Annual Report that reflects the focus and priorities of the previous financial year in delivering the KJMWMS, and any other activities within its remit.
3.4	The KRP will maintain a publically available Operating Framework that defines its scope, remit and procedures; review its continued operation at least in 2019 and 2024, or any other times as agreed by the KRP.
3.5	The KJMWMS will be fully reviewed in 2021/22; or at any other times as agreed by the KRP; or in accordance with any changes in legislation relating to such strategies.

<b>4.</b>	<b>Future Thinking</b>
4.1	<p>The KRP will research activities that will provide an evidence base to enable a more detailed review of the KJMWMS from 2021/22 onwards. This would include focus on:-</p> <ul style="list-style-type: none"> <li>• Aligning with key policies such as the EU Circular Economy Package, 25 Year Environment Plan and the imminent Resource &amp; Waste Strategy. In addition, to maintain a flexible approach to other potential changes that may come from Extended Producer Responsibility (EPR) reform, Deposit Return Schemes (DRS), single-use plastic charges etc.</li> <li>• Exploring the possibility of extending the partnership and reviewing potential opportunities for greater cross-boundary working;</li> <li>• Considering requirements to secure infrastructure to enhance and develop the network of local resource management and waste facilities. This may include the development of consistent collection specifications across all councils as a means to attract future investment and infrastructure.</li> <li>• Developing other metrics and means to focus on quality and value of resources as opposed to traditional weight based targets; and</li> <li>• Target material streams and/or specific sectors in order to identify and implement management options within a more circular context.</li> </ul>

1. What changes would you make to the existing overarching vision? How could we go further?
2. What changes would you make to the existing strategic mission statement? How could we go further?
3. Looking ahead to the future, are there any gaps that we need to consider?
4. What changes would you make to policies 1.1 to 1.6?
5. How could we progress these policies further?
6. Looking ahead to the future, are there any gaps that we need to consider?
7. What changes would you make to policies 2.1 to 2.6?
8. How could we progress these policies further?
9. Looking ahead to the future, are there any gaps that we need to consider?
10. What changes would you make to policies 3.1 to 3.5?
11. How could we progress these policies further?
12. Looking ahead to the future, are there any gaps that we need to consider?
13. What changes would you make to the policy 4.1?
14. How could we progress this policy further?
15. Looking ahead to the future, are there any gaps that we need to consider?

## Partnership Performance

To support stakeholders with their consultation responses, on the next few pages include the partnership's performance over the last five years. If you have any questions – Paldeep Bhatti, KRP Manager may be able to help. Contact details on page 22.

Kent Resource Partnership - Waste Statistics					
Kent's Household Waste Statistics					
Year	2015/16	2016/17	2017/18	2018/19	2019/20 provisional
Kent's Waste Growth	0.2%	2.2%	-3.1%	0.4%	-3.68%
HWRC Recycling Rates (incl. rubble)	69.4%	70.0%	67.8%	68.7%	64.8%
HWRC Recycling Rates (excl. rubble)	61.8%	63.0%	60.3%	61.9%	61.4%
District Recycling Rates	39.8%	41.8%	42.8%	43.4%	43.1%
County Recycling Performance	44.1%	46.3%	46.7%	47.2%	46.7%
HWRC - Household Waste Recycling Centres					



**Waste Management - National Indicators Monitoring Statement**

(data from WasteDataFlow and KCC Database - italics indicate data is provisional)

**National Performance Indicator : 191 - Residual Household Waste per Household (kg/h'hold)**

	2015/16 Actuals (kg/hh)	2016/17 Actuals (kg/hh)	2017/18 Actuals (kg/hh)	2018/19 Actuals (kg/hh)	2019/20 Actuals (kg/hh)
Ashford Borough Council	370.40	354.31	327.23	359.49	352.22
Canterbury City Council	465.24	460.07	470.48	433.92	427.65
Dartford Borough Council	618.46	634.32	619.22	605.40	607.91
Dover District Council	394.36	374.82	343.59	354.43	356.49
Folkestone & Hythe District Council	413.97	422.13	400.15	373.65	401.01
Gravesham Borough Council	483.92	512.20	431.70	432.23	427.53
Maidstone Borough Council	441.52	420.70	403.64	403.33	410.00
Sevenoaks District Council	596.13	567.35	558.88	553.24	554.28
Swale Borough Council	520.00	498.63	490.25	489.90	512.30
Thanet District Council	483.85	475.75	452.51	437.72	466.10
Tonbridge and Malling Borough Council	568.99	563.06	548.32	548.58	487.02
Tunbridge Wells Borough Council	523.23	479.20	471.18	456.20	429.96
<b>County Wide Total</b>	<b>584.50</b>	<b>567.00</b>	<b>540.89</b>	<b>535.30</b>	<b>528.61</b>

**National Performance Indicator : 192 - Percentage of Household Waste Recycled and Composted**

	2015/16 Actuals	2016/17 Actuals	2017/18 Actuals	2018/19 Actuals	2019/20 Actuals
Ashford Borough Council	53.1%	55.0%	56.6%	53.4%	54.2%
Canterbury City Council	43.2%	44.4%	43.5%	46.3%	45.7%
Dartford Borough Council	25.6%	25.2%	25.2%	25.9%	24.3%
Dover District Council	41.7%	44.7%	47.3%	47.0%	47.1%
Folkestone & Hythe District Council	44.0%	42.5%	45.3%	48.0%	44.2%
Gravesham Borough Council	35.0%	34.5%	40.7%	42.2%	42.5%
Maidstone Borough Council	47.8%	49.9%	51.1%	51.4%	49.2%
Sevenoaks District Council	31.9%	38.3%	38.1%	37.5%	38.0%
Swale Borough Council	36.9%	41.6%	41.2%	42.7%	40.5%
Thanet District Council	31.6%	33.8%	34.9%	36.3%	34.5%
Tonbridge and Malling Borough Council	41.5%	42.5%	41.7%	41.9%	46.4%
Tunbridge Wells Borough Council	45.6%	49.1%	48.4%	47.8%	50.2%
<b>County Wide Total</b>	<b>44.1%</b>	<b>46.3%</b>	<b>46.7%</b>	<b>47.2%</b>	<b>46.7%</b>

**National Performance Indicator : 193 - Percentage of Municipal Waste sent to Landfill**

	2015/16 Actuals	2016/17 Actuals	2017/18 Actuals	2018/19 Actuals	2019/20 Actuals
<b>County Wide Total</b>	<b>6.5%</b>	<b>2.8%</b>	<b>1.1%</b>	<b>1.7%</b>	<b>1.5%</b>

## Further Information & Contact Details

KRP Members Board and senior managers (as at time of distribution): -

Ashford Borough Council	CLlr Andrew Buchanan	Tracey Butler
Canterbury City Council	CLlr Andrew Cook	David Ford
Dartford Borough Council	CLlr Steve Brown	Sheri Green
Dover District Council	CLlr Nicholas Kenton	Roger Walton
Folkestone & Hythe District Council	CLlr Stuart Peall	Roger Walton
Gravesham Borough Council	CLlr Lee Croxton	Stuart Alford
Kent County Council	CLlr Susan Carey	David Beaver
Maidstone Borough Council	CLlr Derek Mortimer	Jennifer Shepherd
Sevenoaks District Council	CLlr Margot McArthur	Adrian Rowbotham
Swale Borough Council	CLlr Tim Valentine	Martyn Cassell
Thanet District Council	CLlr Steve Albon	Gavin Waite
Tonbridge & Malling Borough Council	CLlr Robin Betts	Robert Styles
Tunbridge Wells Borough Council	CLlr Matthew Bailey	Gary Stevenson

**Website:** [www.kent.gov.uk/krp](http://www.kent.gov.uk/krp)

For general enquiries or if in doubt as to whom to contact for any of the 13 councils:

Paldeep Bhatti, Kent Resource Partnership Manager,

c/o Sevenoaks District Council,

Argyle Road, Sevenoaks, Kent, TN13 1HG,

Tel: 01732 227128

Email:

[paldeep.bhatti@kentrp.org.uk](mailto:paldeep.bhatti@kentrp.org.uk)

*Published by the Kent Resource Partnership on behalf of the KRP's constituent councils: -*

*Ashford BC, Canterbury CC, Dartford BC, Dover DC, Folkestone & Hythe DC, Gravesham BC, Kent CC, Maidstone BC, Sevenoaks DC, Swale BC, Thanet DC, Tonbridge & Malling BC and Tunbridge Wells BC.*

*Information in this publication may be used without charge and without licence subject to the original context for information being maintained and the KRP accredited as the source.*

*Publication Date: January 2021*

*© Copyright 2021 of Sevenoaks District Council on behalf of the Kent Resource Partnership.*