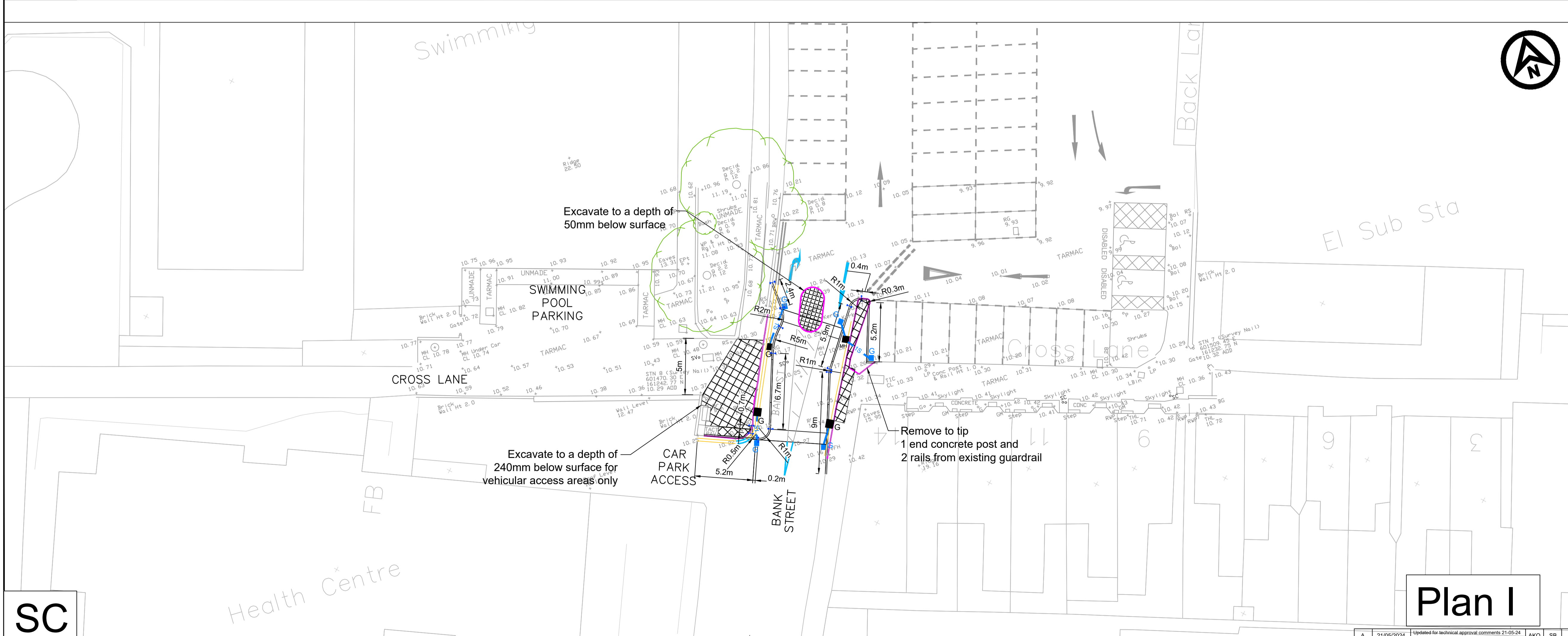


GA

Plan I



SC

Plan I

Notes

- Please see notes cover sheet which applies to all drawings

Kerbing / Footway / Carriageway Construction Key

- Overlay footway with AC6 dense surf 100/150 20mm thick over AC10 regulating layer. Perimeter of surface course to be keyed into existing surface course to give a minimum layer thickness of 20mm. All joints to be saw cut.
- See design drawing for details
- New grass seeding laid on a layer of top soil and Type 1 base. All joints to be saw cut.

HB2 Proposed 125 x 255mm half battered kerbing (Type HB2) "Haunch/Variation B" upstand 125mm to KCC/1100/01/D

DK Proposed 125 x 150mm bullnose kerbing (Type BN). Upstand 0-6mm to KCC/1100/01/D.

TK Proposed 125 x 150mm bullnose kerbing (Type BN). Upstand 25mm to KCC/1100/01/D.

D Proposed 150 x 305mm half battered kerb (Type HB1) laid as dropper at bus boarder KCC/1100/006.

T Proposed 125 x 150mm tapered kerb units (type "DL" or CKL / CKR") to KCC/1100/01/D.

Q3 PCC quadrant kerb (Type QHB305).

- Buff PCC tactile paving 400 x 400mm. 50mm thick slabs, to KCC/1100/015. Blisters to align with tactile on opposite side of road.
- Buff PCC tactile paving 400 x 400mm. 50mm thick slabs, to KCC/1100/015. Blisters to align with tactile on opposite side of road.
- 50mm SMA 10 S5 surface course 40/60 WTR2, 60mm SMA 14 60/20 WTR2, 185mm AC32 HDM Base 40/60, 165mm Type 1 Subbase 888AR
- 50mm SMA10 surface course 40/60 WTR2 laid on, 60mm SMA 14 60/20 WTR2.
- Reinstatement for carriageway: 50mm SMA10 surface course 40/60 WTR2
- MMA "black colour" anti-skid material laid above existing surface.
- New courtesy crossing feature using red, grey or buff surfacing (to be agreed on site with engineer). See details from KCC-HTW-1100-AT-1B

2 No. new Marshalls Reinforced Concrete speed cushions as per Technical Datasheet. Construction: AC32 subbase, Fast setting M60 based screed (with 1 day cure time before the surface course around the cushion is laid) and a AC10 surface course Approx. 135mm depth.

(11) Non-illuminated traffic sign (refer to Sign Schedule for details).

▲ Sign position and orientation (refer to Sign Schedule for details)

0023 New / Refreshed Road marking to TSRGD 2016 Diagram number.

- White Road marking.
- Yellow Road marking.
- Timber bollard with red / white bands (see Sign Schedule).

Site Clearance Key

- Remove and dispose of existing kerb including bedding and backing. * Disposed of at Contractor's licensed tip.
- Remove road marking by hydroblasting
- * Take up existing blocks / pavers including sand/cement layer to store for reuse
- * Mill bituminous carriageway depth 100mm but not exceeding 125mm coal tar contaminated
- * Mill bituminous carriageway depth not exceeding 50mm
- * Break-out and dispose of existing concrete material
- Excavate soft material to a depth of 100mm and tip
- * Backfilling disused gully internal diameter 400mm with in situ concrete ST2.
- * Bollard to be taken up and set aside for reuse
- Tangent Point
- Sign (and post) to be removed (refer to Sign Schedule).

Drainage Key

- MH ■ Take up and adjust manhole cover to new level.
- AM • Take up and adjust medium service cover to new level.
- AS • Take up and adjust small service cover to new level.
- AG Adjust existing gully grating and frame.
- NG ■ PCC trapped gully with class D400 grate as KCC/SD/500/009.
- * Connection of 150Ø pipe to new PCC chamber.
- 1S — 150Ø Twin wall pipe in Type S bed and surround.
- MH ■ New manhole chamber design group 1a (refer to KCC/SD/500/001 for details).
- G ■ Existing road gully

Street Lighting

- New lamp column (see illuminated Sign Schedule).
- BB New bellisha beacon (see illuminated Sign Schedule).

Soft Landscaping

- ★ 12-14cm girth Field Maple Tree "Acer Campestre" and pit (see drawing details KCC-HTW-300-11). Pit volume 0.75 x 0.75 x 0.5m

Rev	Revision Date	Purpose of revision	Drawn	Checked	Appr'd
0	31/01/2024	For Construction First Issue	AKO	SB	JW

Kent County Council
 kent.gov.uk

Kent County Council
 Ashford Highway Depot
 Henwood Industrial Estate
 Ashford
 TN24 8AD
 Tel: 03000 418181

Project: Active Travel
 Faversham Cross Town Improvements

Drawing title: Design Drawing
 Sheet 9

Drawing status: Detailed Design

Scale: 1:200 at A1 | Do not scale

Drawing number: 23-SW-AC-873-02 | Rev A

This drawing is not to be used in whole or part other than for the intended purpose and project as defined on this drawing. Refer to the contract for full terms and conditions.

21/05/2024 | Updated for technical approval comments 21-05-24 | AKO | SB | JW