

KENT COUNTY COUNCIL

# ENVIRONMENT POLICY



[www.kent.gov.uk](http://www.kent.gov.uk)



Kent County Council has an important role in ensuring Kent's residents and businesses benefit from clean growth and a competitive, innovative and resilient economy. This must be balanced with protecting and improving our natural and historic assets, for their unique value and positive impact on our society, economy, health and wellbeing.

This policy applies to Kent County Council services, assets and staff.

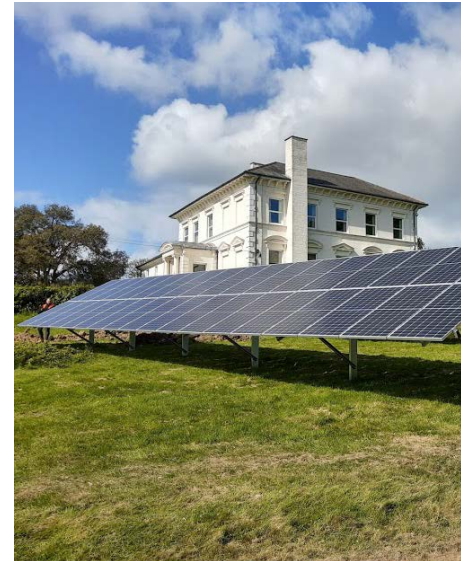
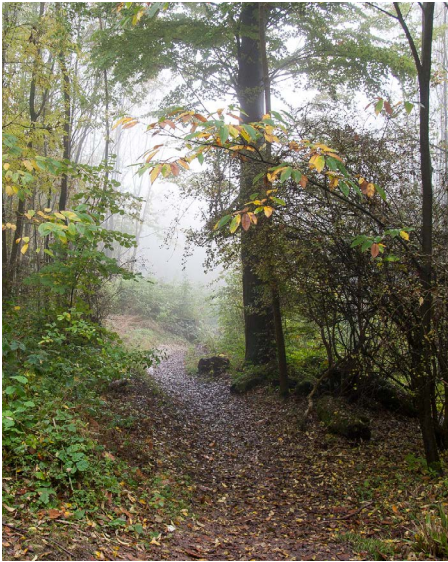
This policy supports the priorities set out in the Kent Environment Strategy – a strategy for environment, health and economy 2016, the Kent & Medway Energy & Low Emissions Strategy 2020 and the Kent Nature Partnership Biodiversity Strategy 2020.  
<https://www.kentnature.org.uk/biodiversity-strategy.html>

## WE WANT TO:

- Deliver positive change for Kent's environment, health and economy by working with our Kent partners to deliver the Kent Environment Strategy priorities;
- Achieve our net-zero emissions target, by significantly reducing our use of natural resources and generating more renewable energy, contributing to clean growth and increased energy security;
- Ensure our knowledge of severe weather risks and climate change is used to improve resilience when making decisions, maintaining essential services, and keeping Kent moving;
- Protect, enhance and positively manage our natural and historic assets, including land managed in partnership, to tackle a declining biodiversity and in particular, support pollinating insects, improve public health and manage and mitigate the impacts of climate change;
- Plan our activities and services to minimise environmental impacts, avoid pollution of land and water and unnecessary waste, and prevent community concerns arising;
- Minimise air pollution arising from our activities and work with partners and communities to target actions that improve local air quality and promote healthier choices to protect health;







## TO DELIVER THIS WE WILL:

- Engage with Kent's communities, businesses and partners to understand their expectations, minimise risks and maximise opportunities for innovation and shared resources, and provide guidance on the actions needed to address Kent's environmental priorities;
- Make sure Kent's environmental priorities and the risks and opportunities of climate change are considered when setting strategy and policy, taking key decisions and when commissioning and delivering services;
- Set environmental targets and provide public information about our performance;
- Effectively plan for and adapt to climate change, including how we manage the impacts of severe weather on our services, estate and roads;
- Seek and invest in new technologies and whole-life approaches that reduce our use of energy, fuel, water and other materials, and aim to meet most of our energy needs from low carbon or renewable sources;
- Work towards a circular economy by minimising waste from our own activities and promoting the waste hierarchy, to avoid waste, reduce single-use items and re-use, re-purpose or recycle before choosing other disposal routes;
- Support KCC's active travel strategy by reducing our members' and staff's need to travel. This includes promoting healthier options such as walking, cycling and public transport and providing the technologies, workspaces and opportunities to work in new ways;
- Inform and encourage our staff to take positive action and contribute ideas, to improve our environmental performance and reduce our costs;
- Work with our supply chain partners and support Kent businesses to deliver innovation and social value in order to plan for climate change, reduce their environmental impacts and provide low carbon, sustainable goods and services;
- Work with partners to support Kent businesses and communities to adapt and become more resilient to climate change, including how to protect health and wellbeing;
- Maintain and continually improve an Environmental Management System certified to ISO 14001:2015, comply with relevant environmental legislation and prevent pollution.

**This policy will be implemented and monitored through the council's environmental management system. This system is a structured approach to making environmental improvements, which is assessed against the ISO14001:2015 Standard by the British Standards Institute.**

**A progress report on the implementation of the policy will be reviewed annually by the Council's corporate management team.**

**Susan Carey**  
Cabinet Member for Environment

**Barbara Cooper**  
Corporate Director for Growth,  
Environment & Transport

## Photographs

Front cover left to right:

Two bees on a sunflower head, Wind turbine rotor head,  
Plug in electric car.

Page 2:

Family cycling in Perry Wood

Page 3 left to right:

Woodland footpath on a misty autumn day at Trosley  
country park, Stormy seas at Broadstairs with Bleak  
House museum in the background, Ground mounted  
solar panels at the Swattenden outdoor education  
centre in Cranbrook.

Issued September 2020

This leaflet is available in alternative  
formats and can be explained in a range of  
languages. Please call 03000 421 553 or email  
[alternativeformats@kent.gov.uk](mailto:alternativeformats@kent.gov.uk) for details.