

Voluntary Sector Event

17 October 2018

Agenda

- 1.30pm Arrival, refreshments and registration
- 2pm Welcome – Graham Gibbens
- 2.10pm KCC's commissioning priorities – Karen Sharp
- 2.20pm Current Position and Recap:
- Care Navigation and Social Prescribing
 - Community Based Wellbeing Service – Sam Sheppard
- 2.45pm Interim arrangements 2019/20 – Christy Holden
- 3pm Break
- 3.15pm Workshop
- 3.45pm Summary of key milestones and activity over next year
– Sam Sheppard
- 3.55pm Next steps and close – Graham Gibbens

Welcome

Graham Gibbens – Cabinet Member for Adult Social Care
and Public Health

KCC's Commissioning Priorities

Karen Sharp – Head of Commissioning Portfolio –
Children's and Public Health

Increasing Opportunities, Improving Outcomes

Our Vision:

Our focus is on improving lives by ensuring that every pound spent in Kent is delivering better outcomes for Kent's residents, communities and businesses

Strategic Outcome

Children and young people in Kent get the best start in life

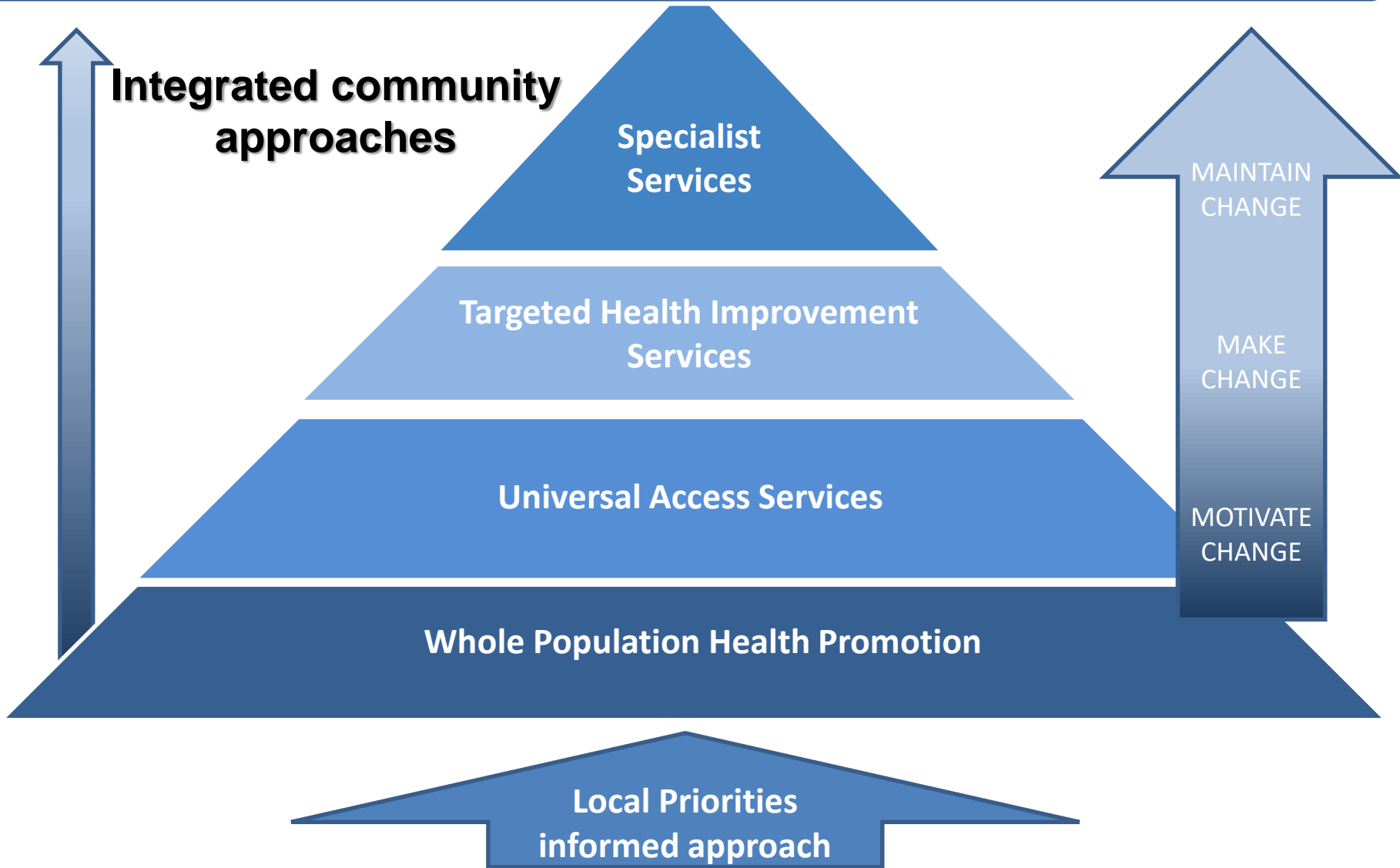
Strategic Outcome

Kent communities feel the benefits of economic growth by being in-work, healthy and enjoying a good quality of life

Strategic Outcome

Older and vulnerable residents are safe and supported with choices to live independently

Community Health and Wellbeing



KCC's commitment to the Sector

- **Increasing Opportunities, Improving Outcomes** – KCC's Strategic Statement 2015-2020
- **Commissioning Success** – Replaces Commissioning Framework 2018
- **Voluntary, Community and Social Enterprise Policy**– September 2015; evaluation July 2018

Current Position and Recap

Samantha Sheppard, Senior Commissioner

Current Position

- KCC Adult Social Care commissions a range of services that promote wellbeing for older people, people with dementia, people with physical disability and people with sensory impairments
- Most of these are funded through historic annual grant arrangements
- Use of grants to commission services has inherent challenges in relation to:
 - Data collection (GDPR)
 - Performance monitoring
 - Market sustainability
 - Adherence to KCC Policies
(Voluntary and Community Sector)



Current Position

- There are also a number of contracts that promote wellbeing for adults in Kent, including carers short breaks and Home Improvement Agencies
- These contracts are scheduled to end during 2019

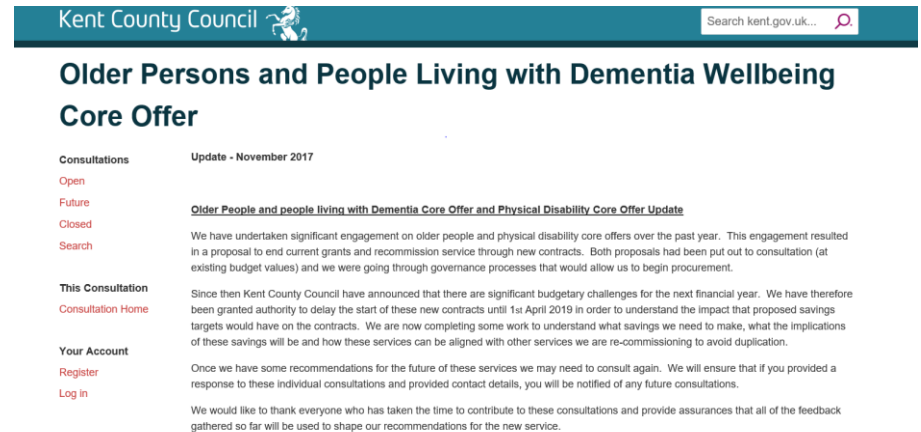




Recap

During 2017, we worked with stakeholders to develop the Older People and People Living with Dementia Core offer and the Physical Disability Core Offer

Work was halted on both to achieve savings and a new approach needed to be developed

Wellbeing and Resilience Strategy is the new approach



Kent County Council  Search kent.gov.uk... 

Older Persons and People Living with Dementia Wellbeing Core Offer

Consultations **Update - November 2017**

[Open](#)
[Future](#)
[Closed](#)
[Search](#)

This Consultation
[Consultation Home](#)

Your Account
[Register](#)
[Log in](#)

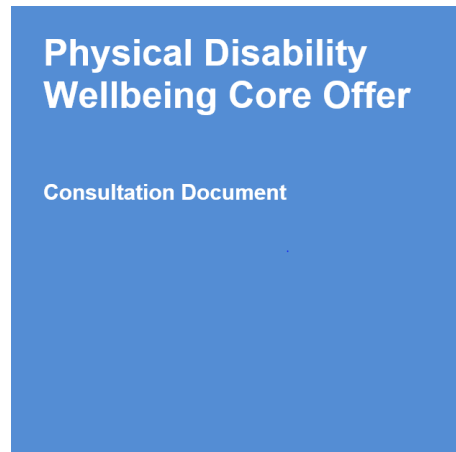
Older People and people living with Dementia Core Offer and Physical Disability Core Offer Update

We have undertaken significant engagement on older people and physical disability core offers over the past year. This engagement resulted in a proposal to end current grants and recommission service through new contracts. Both proposals had been put out to consultation (at existing budget values) and we were going through governance processes that would allow us to begin procurement.

Since then Kent County Council have announced that there are significant budgetary challenges for the next financial year. We have therefore been granted authority to delay the start of these new contracts until 1st April 2019 in order to understand the impact that proposed savings targets would have on the contracts. We are now completing some work to understand what savings we need to make, what the implications of these savings will be and how these services can be aligned with other services we are re-commissioning to avoid duplication.

Once we have some recommendations for the future of these services we may need to consult again. We will ensure that if you provided a response to these individual consultations and provided contact details, you will be notified of any future consultations.

We would like to thank everyone who has taken the time to contribute to these consultations and provide assurances that all of the feedback gathered so far will be used to shape our recommendations for the new service.



Physical Disability Wellbeing Core Offer

Consultation Document

kent.gov.uk/physicaldisabilitycoreoffer

Consultation closes Monday 4 September



Wellbeing and Resilience Strategy

Two stage process that will end remaining grants

Gather information, monitor performance, understand demand, identify gaps, engage with stakeholders

1. Commission Services that signpost people to the support they need and help navigate health and social care systems

Community Navigation contract
For 1st April 2019

2. Commission Community Based Wellbeing Services that provide ongoing support to people

Community Wellbeing Support contract
For 2nd January 2020

Next steps

- The Community Navigation (care navigation and social prescribing) contract tender is expected to open on 7th November 2018
- Over the coming months, we expect to begin stakeholder engagement to design the new Wellbeing Services contract
- We want to understand what services to commission, the commissioning model, how to bring a range of wellbeing grants and contracts into one model
- All details of future events will be advertised through the Kent Business Portal

Interim arrangements 2019/20

Christy Holden, Senior Commissioning Manager

Interim arrangements for 2019/20

KCC's Requirements:

- Ability to gather information about type and level of demand for services from the care navigation contract. i.e. what do people want, where are the gaps
- Implement interim measures for historic grants that enable greater performance monitoring
- Identify scale and scope of eligibility for Social Care services by collating information on their users
- Support the VCS, particularly smaller organisations, encouraging networks of supply and collaboration
- Understand value of investment and nature of prevention

What we need to achieve

- KCC compliance against its Policy
- GDPR compliance from grants
- Transparency in funding for tender
- Understand who is using which services
- Understand what people want through the Care Navigation and Social Prescribing service
- Grant agreements in place by March 2019
- Minimum of nine months
- Propose moving from payments six monthly in advance
- Understand impact from 2020 on sector

Your needs

- Will differ between organisations
- Varied understanding of GDPR requirements
- Varied data collection
- Varied capacity for monitoring
- Different impacts of moving funding arrangements

Talk to us....

- We will be issuing standard documentation
- We will happily talk through any issues to increase understanding on an individual basis
- We will be as flexible as possible to move to a better funding arrangement for these services with more certainty of funding

Refreshment Break followed by Workshop

Workshop

1. What do we need to consider as the impacts on organisations of moving from payment six months in advance to payment one month in advance?
2. What are the specific risks, issues and questions we should be seeking to resolve during engagement for the Wellbeing Services contract?
3. What information should we be collecting to support future commissioning and mobilisation?

Summary of key milestones and activity over the next year

Samantha Sheppard, Senior Commissioner

Key activity milestones

Date	Activity
07/11/2018	Tender Opens for Care Navigation Contract for 28 days
Jan 2019	Contract Award
Jan – Mar 2019	Mobilisation
Apr 2019	Contract Starts
Oct – Mar 2019	Discussions to establish interim grants from April 2019
Oct 2018	Activity commences for Community Based Wellbeing Service
Oct – May 2019	Engagement and consultation
Jun – Jul 2019	Tender
Aug 2019	Evaluation
Sep 2019	Award
Oct – Dec 2019	Mobilisation
Jan 2020	Contract starts

Next steps and close

Graham Gibbens, Cabinet Member for Adult Social Care
and Public Health

Thank you – have a safe journey home