

Appendix C

Concept Option Drawings

0500-UA006751-P1 - Location Plan

0501-UA006751-P1 - Option 1 - Tudeley Storage

0502-UA006751-P1 - Option 2 - Prevent flow from Tudeley to Gravelly Ways

0503-UA006751-P1 - Option 3 - Rhoden East Storage

0504-UA006751-P1 - Option 4 – Prevent flow from Rhoden East to Rhoden West

0505-UA006751-P1 - not used

0506-UA006751-P1 - Option 6 – Paddock Wood Storage

0507-UA006751-P1 – Option 7 – Gravelly Ways Wall



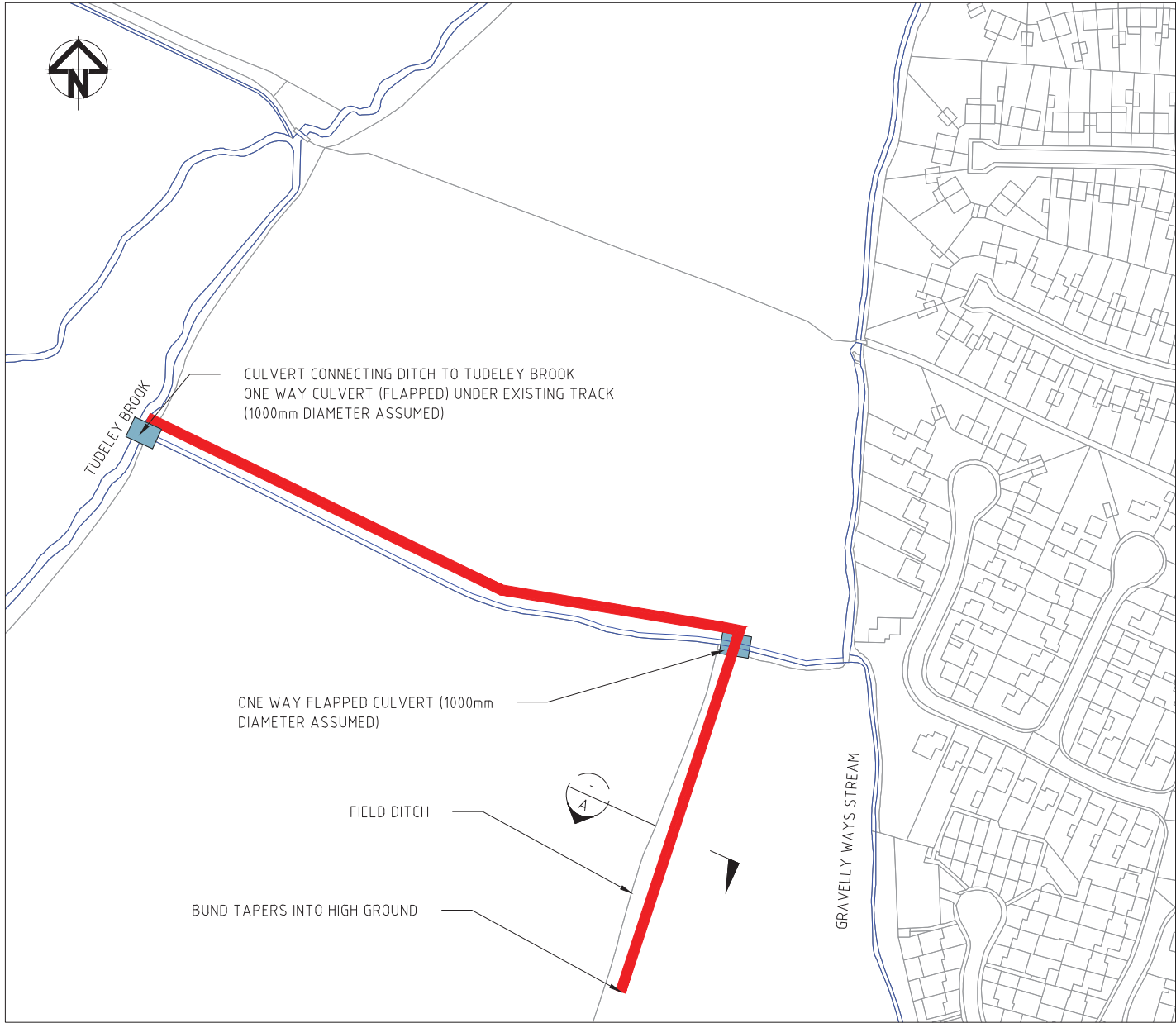
Notes:

- DO NOT SCALE FROM THIS DRAWING. USE FIGURED DIMENSIONS ONLY.
- ALL DIMENSIONS IN MILLIMETERS UNLESS NOTED OTHERWISE.
- DETAILED DESIGN TO CONFIRM DIMENSIONS.
- DIMENSIONS SHOWN ARE TO ENABLE PRELIMINARY COST ESTIMATE FOR WORKS.
- SPECIFICATION FOR BUNDS MATERIAL TO BE CONFIRMED AT DETAILED DESIGN ASSUMED LAND NOT CONTAMINATED.
- TOPSOIL TO BE REMOVED TO CLAY FORMATION. DEPTHS SHOWN ARE ASSUMED.
- ASSUME CLAY SHALL BE PLACED IN HORIZONTAL LAYERS NOT EXCEEDING 150mm CONSOLIDATED THICKNESS AND COMPACTED BY AN APPROVED METHOD TO AN AIR VOID CONTENT NOT EXCEEDING 5%.
- DITCHES ARE TREE LINED.
- CULVERT ASSUMED AS 1.0m DIAMETER TO BE CONFIRMED AT DETAILED DESIGN.
- CULVERTS TO INCLUDE HEADWALLS.

Key:

- BUND
- RETAINING WALL
- WATERCOURSE

P1	FOR INFORMATION ONLY	09SEP14
Issue	Description	Date
Status	PRELIMINARY NOT TO BE USED FOR CONSTRUCTION	
Scales	1:10000	Current Issue Signatures
Original Size	A3	Author R. Rafan
Datum	OS	Checker J. Delgado
Grid	GRID	Approver C. Bursnoll
(c) Crown Copyright and database right 2014. Ordnance Survey 100019238		
Filename:	0500-UA006751-P1.dwg	
Client		
Project		
Title	PADDOCK WOOD FLOOD ALLEVIATION STUDY	
Drawing No.	Project No.	Issue
0500	UA006751	P1

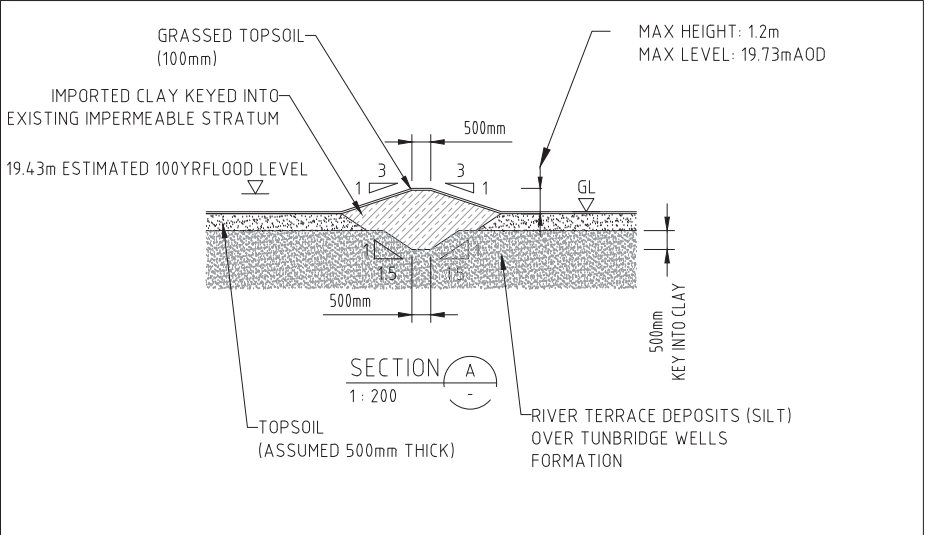


PLAN (SCALE 1:2500)



LOCATION PLAN (NTS)

EARTH BUND DETAILS	
TOTAL LENGTH	406m
ESTIMATED VOLUME OF IMPORTED CLAY*	3010m³
ESTIMATED VOLUME OF EXCAVATED MATERIAL*	1565m³



TYPICAL BUND CROSS SECTION (SCALE 1:200)

- Notes:
- DO NOT SCALE FROM THIS DRAWING. USE FIGURED DIMENSIONS ONLY.
 - ALL DIMENSIONS IN MILLIMETERS UNLESS NOTED OTHERWISE.
 - DETAILED DESIGN TO CONFIRM DIMENSIONS.
 - DIMENSIONS SHOWN ARE TO ENABLE PRELIMINARY COST ESTIMATE FOR WORKS ONLY.
 - SPECIFICATION FOR BUNDS MATERIAL TO BE CONFIRMED AT DETAILED DESIGN ASSUMED LAND NOT CONTAMINATED.
 - TOPSOIL TO BE REMOVED TO CLAY FORMATION. DEPTHS SHOWN ARE ASSUMED.
 - ASSUME CLAY SHALL BE PLACED IN HORIZONTAL LAYERS NOT EXCEEDING 150mm CONSOLIDATED THICKNESS AND COMPACTED BY AN APPROVED METHOD TO AN AIR VOID CONTENT NOT EXCEEDING 5%.
 - DITCHES ARE TREE LINED.
 - CULVERT ASSUMED AS 1.0m DIAMETER TO BE CONFIRMED AT DETAILED DESIGN.
 - CULVERTS TO INCLUDE HEADWALLS AND SCOUR PROTECTION.
 - NO BULKING FACTOR ASSUMED FOR EXCAVATION OR IMPORTED FILL*.

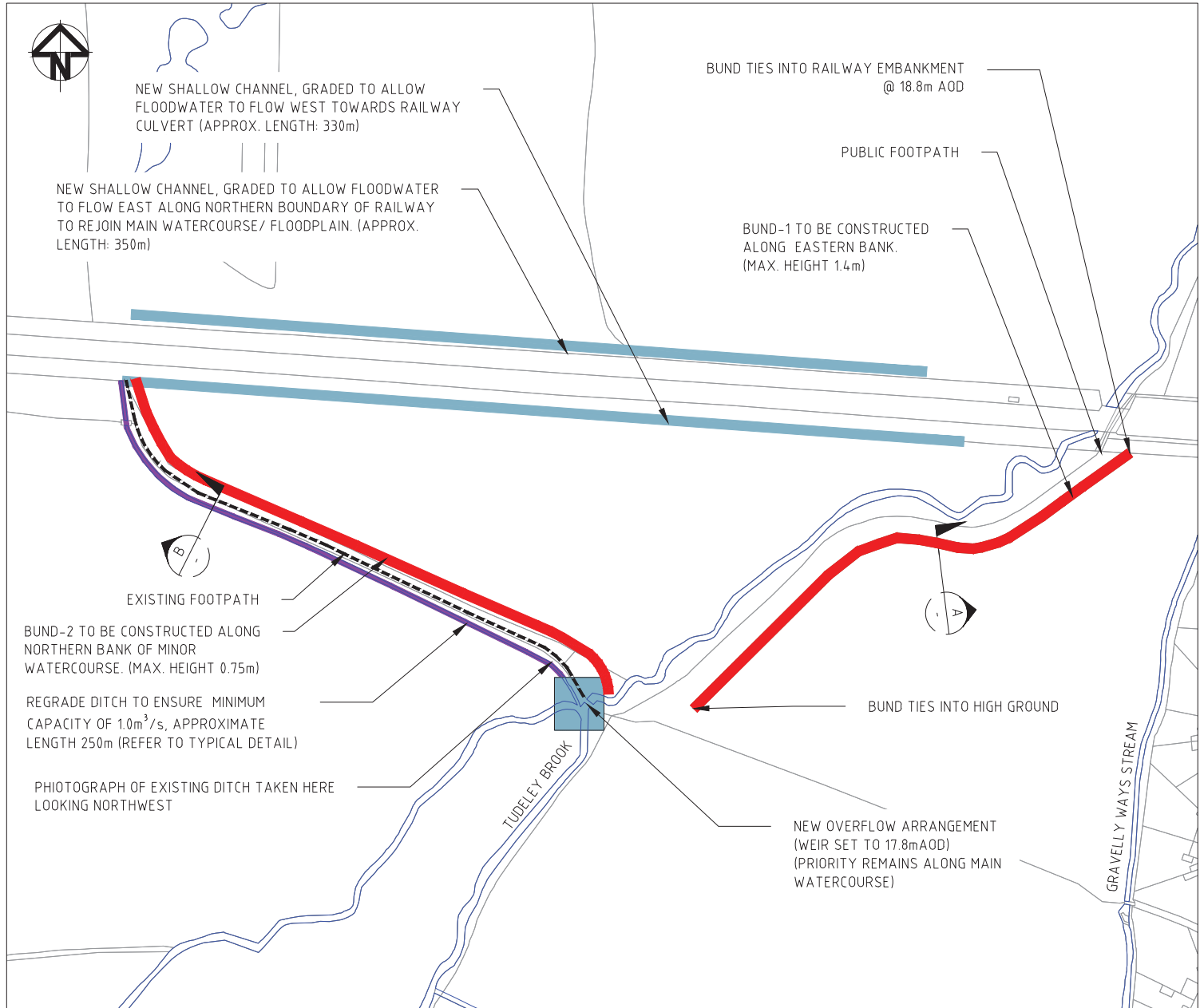
Key:

	BUND, SEE TYPICAL CROSS SECTION
	WATERCOURSE

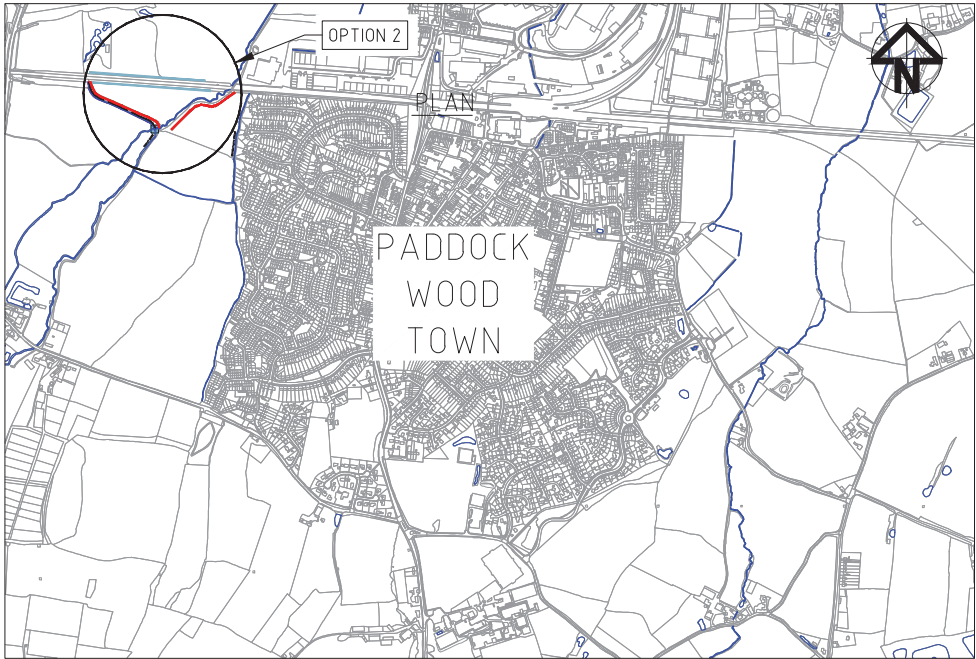
P1	FOR INFORMATION ONLY	09SEP14
Issue	Description	Date
Status	PRELIMINARY NOT TO BE USED FOR CONSTRUCTION	
Scales	AS SHOWN	Current Issue Signatures
Original Size	A3	Author R. Rafan
Datum	OS	Checker J. Delgado
Grid	GRID	Approver C. Bursnoll
Filename:	0501-UA006751-P1.dwg	
Client		



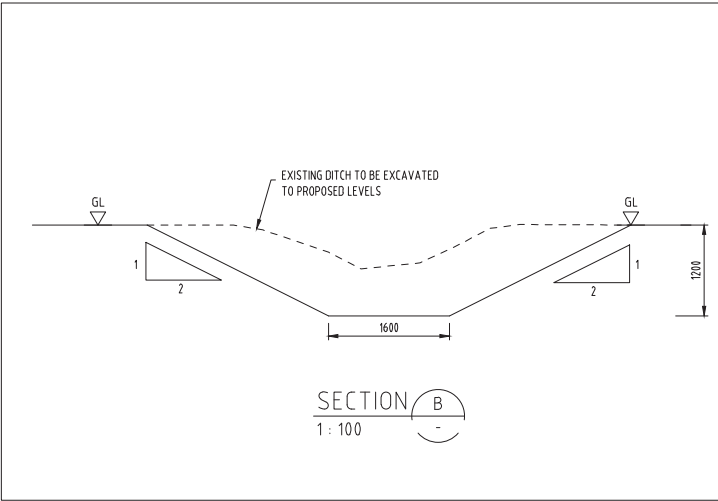
Project	PADDOCK WOOD FLOOD ALLEVIATION STUDY	
Title	OPTION 1 TUDELEY BROOK STORAGE	
Drawing No.	Project No.	Issue
0501	UA006751	P1



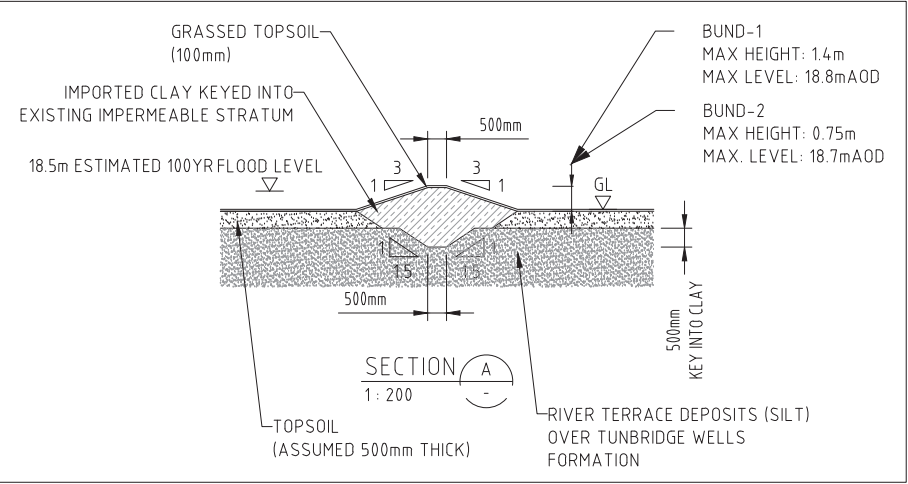
TUDELEY BROOK-OVERLAND FLOW MANAGEMENT (SCALE 1:2500)



LOCATION PLAN (NTS)



EXISTING DITCH (VIEW DOWNSTREAM)



EARTH BUND DETAILS		
BUND	BUND-1	BUND-2
TOTAL LENGTH	217	250
VOLUME OF IMPORTED CLAY*	1002m ³	725m ³
VOLUME OF EXCAVATED MATERIAL*	741m ³	1155m ³

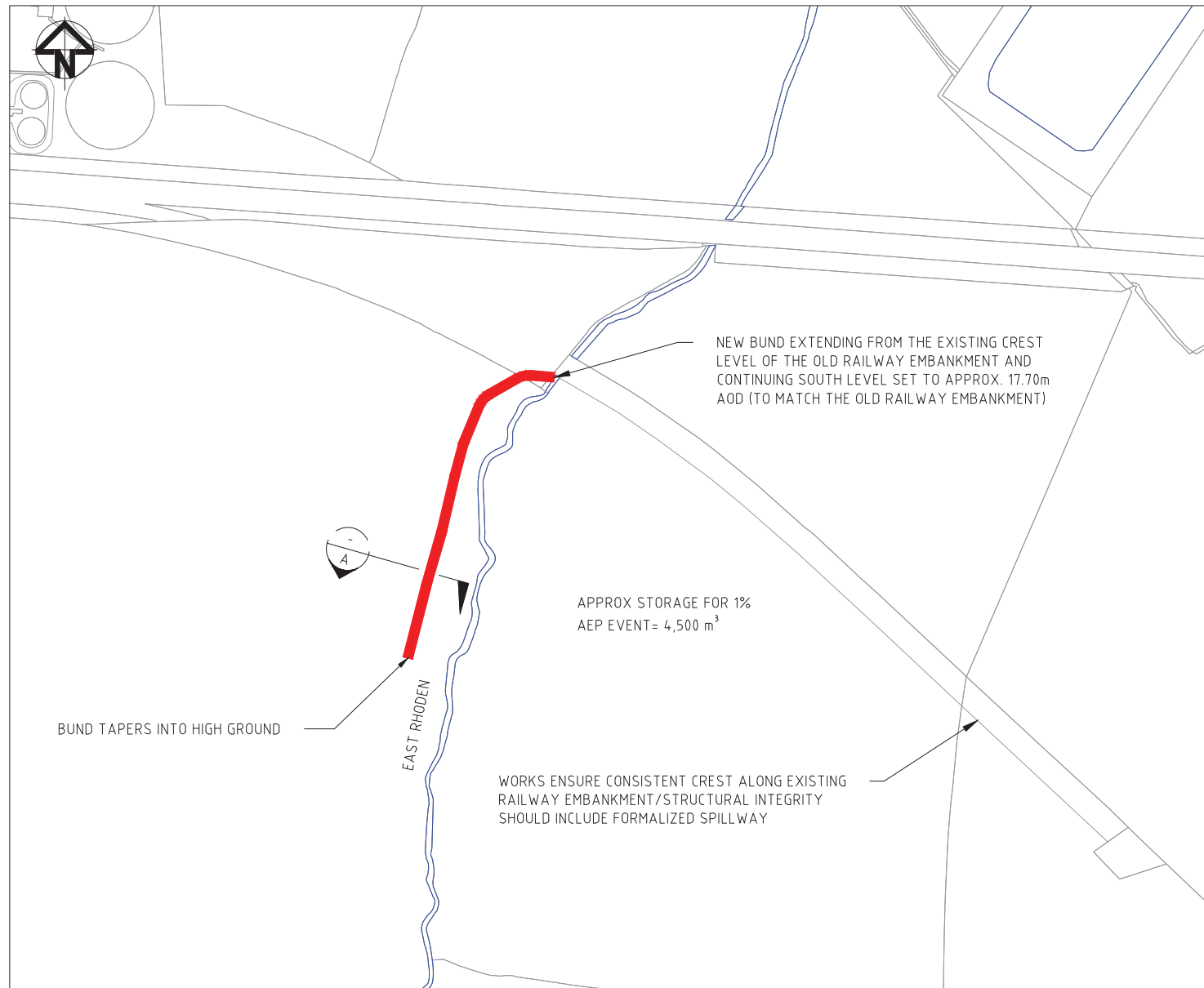
- Notes:
- DO NOT SCALE FROM THIS DRAWING. USE FIGURED DIMENSIONS ONLY.
 - ALL DIMENSIONS IN MILLIMETERS UNLESS NOTED OTHERWISE.
 - DETAILED DESIGN TO CONFIRM DIMENSIONS.
 - DIMENSIONS SHOWN ARE TO ENABLE PRELIMINARY COST ESTIMATE FOR WORKS ONLY.
 - SPECIFICATION FOR BUNDS MATERIAL TO BE CONFIRMED AT DETAILED DESIGN ASSUMED LAND NOT CONTAMINATED.
 - ASSUME THE CLAY SHALL BE PLACED IN HORIZONTAL LAYERS NOT EXCEEDING 150mm CONSOLIDATED THICKNESS AND COMPACTED BY AN APPROVED METHOD TO AN AIR VOID CONTENT NOT EXCEEDING 5%.
 - NO BULKING FACTOR ASSUMED FOR EXCAVATION OR IMPORTED FILL.*

- Key:
- BUND, SEE TYPICAL CROSS SECTION
 - WATERCOURSE
 - DITCH TO BE REGRADED
 - NEW SHALLOW CHANNEL
 - EXISTING FOOTPATH

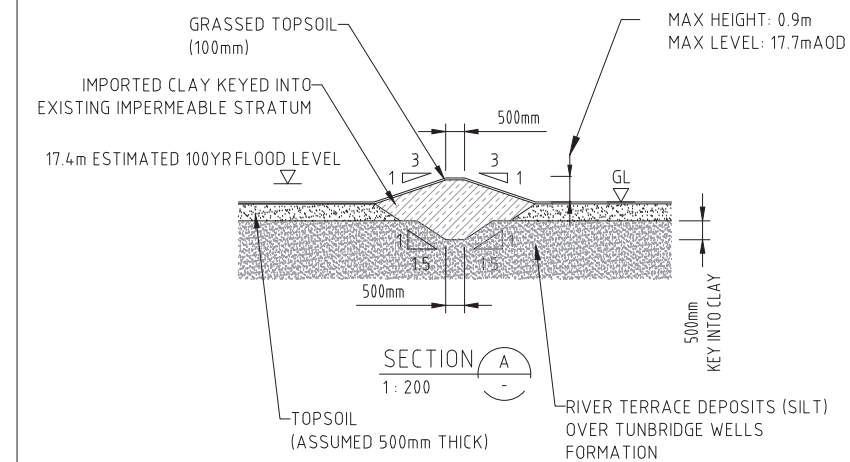
P1	FOR INFORMATION ONLY	09SEP14
Issue	Description	Date
Status	PRELIMINARY NOT TO BE USED FOR CONSTRUCTION	
Scales	AS SHOWN	Current Issue Signatures
Original Size	A3	Author R. Rafan
Datum	OS	Checker J. Delgado
Grid	GRID	Approver C. Bursnoll
Filename:	0502-UA006751-P1.dwg	
Client	Kent County Council kent.gov.uk	



Project		
PADDOCK WOOD FLOOD ALLEVIATION STUDY		
Title		
OPTION 2 - PREVENT OVERLAND FLOW FROM TUDELEY BROOK TO GRAVELLY WAYS BROOK		
Drawing No.	Project No.	Issue
0502	UA006751	P1



EARTH BUND DETAILS	
TOTAL LENGTH	145m
ESTIMATED VOLUME OF IMPORTED CLAY*	685m ³
ESTIMATED VOLUME OF EXCAVATED MATERIAL*	415m ³




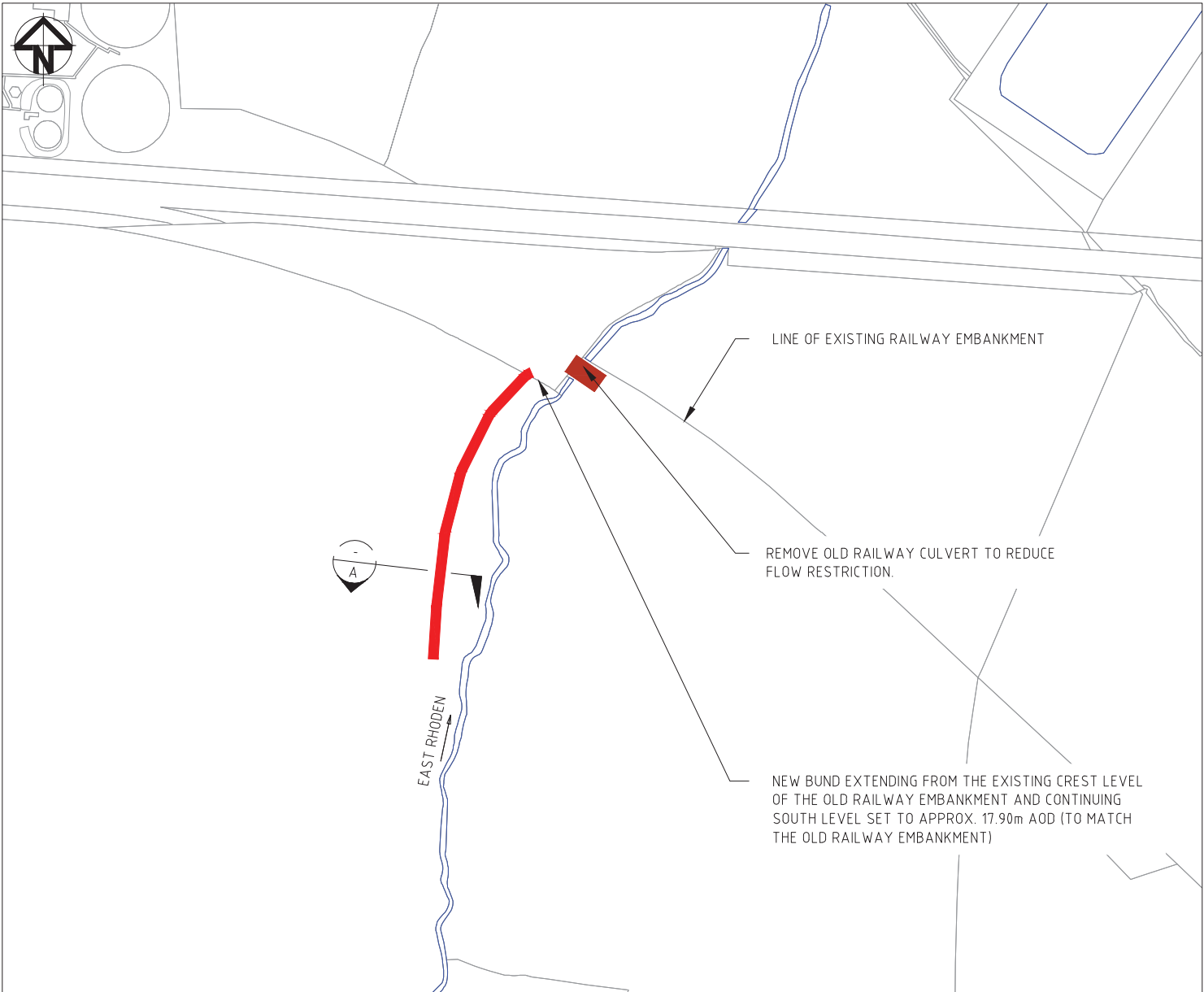
Notes:

1. DO NOT SCALE FROM THIS DRAWING. USE FIGURED DIMENSIONS ONLY.
2. ALL DIMENSIONS IN MILLIMETERS UNLESS NOTED OTHERWISE.
3. DETAILED DESIGN TO CONFIRM DIMENSIONS.
4. DIMENSIONS SHOWN ARE TO ENABLE PRELIMINARY COST ESTIMATE FOR WORKS ONLY.
5. SPECIFICATION FOR BUNDS MATERIAL DIMENSIONS TO BE CONFIRMED AT DETAILED DESIGN ASSUMED LAND NOT CONTAMINATED.
6. ASSUME THE CLAY SHALL BE PLACED IN HORIZONTAL LAYERS NOT EXCEEDING 150mm CONSOLIDATED THICKNESS AND COMPACTED BY AN APPROVED METHOD TO AN AIR VOID CONTENT NOT EXCEEDING 5%.
7. NO BULKING FACTOR ASSUMED FOR EXCAVATION OR IMPORTED FILL.*

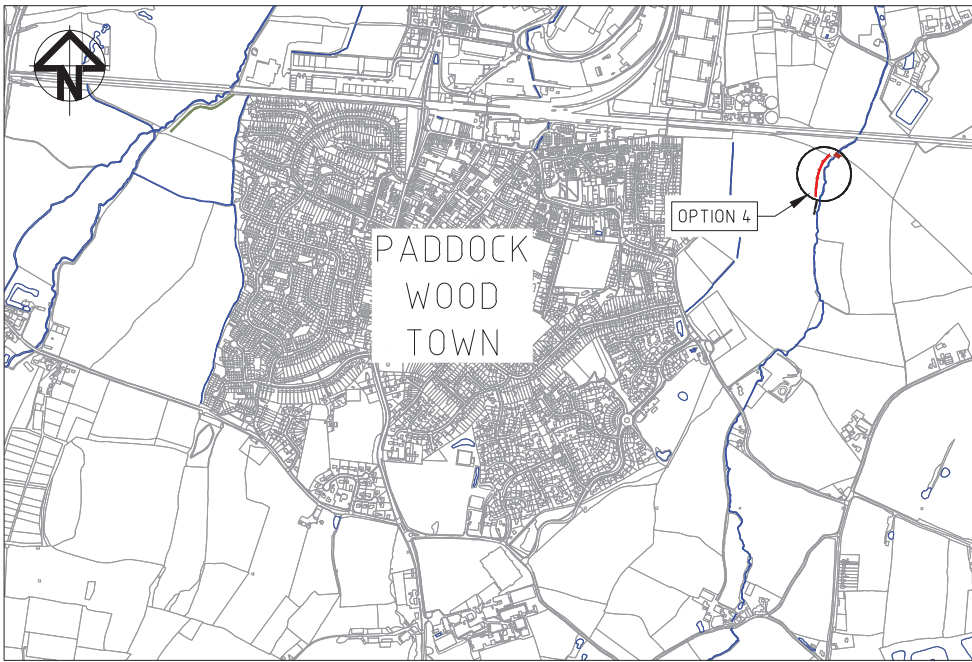
Key:

 BUND, SEE TYPICAL CROSS SECTION
 WATERCOURSE

P1	FOR INFORMATION ONLY		09SEP14
Issue	Description		Date
Status			
PRELIMINARY NOT TO BE USED FOR CONSTRUCTION			
Scales		Current Issue Signatures	
AS SHOWN		Author R. Raftan	RR
Original Size	A3	Checker J. Delgado	JD
Datum	OS	Approver C. Bursnoll	CB
Grid	GRID	(c) Crown Copyright and database right 2014. Ordnance Survey 100019238	
Filename: 0503-UA006751-P1.dwg			
Client			
<div><div><div>Kent County Council</div><div>kent.gov.uk</div></div><div></div></div>			
<div><div><div></div><div></div></div><div>JacksonHyder</div></div>			
Project			
PADDOCK WOOD FLOOD ALLEVIATION STUDY			
Title			
OPTION 3 RHODEN EAST STORAGE			
Drawing No.		Project No.	Issue
0503	—	UA006751	— P1

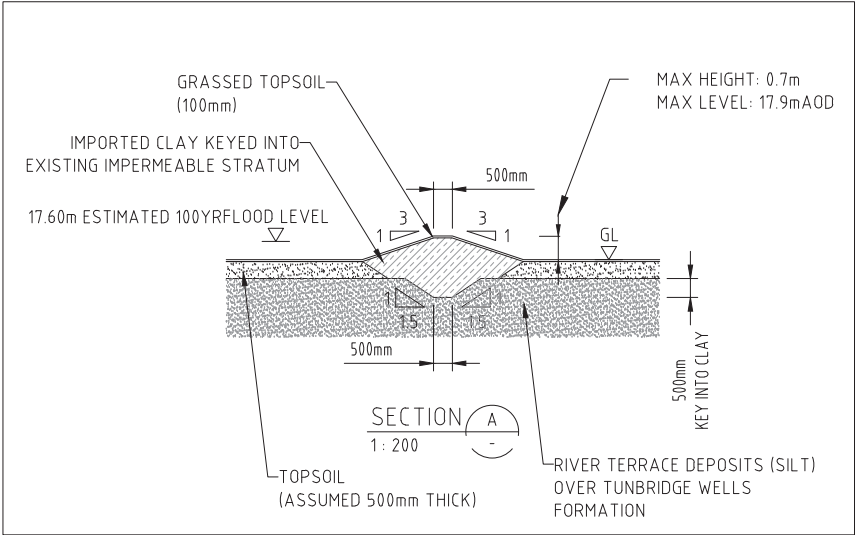


PLAN (SCALE 1:2500)



LOCATION PLAN (NTS)

EARTH BUND DETAILS	
TOTAL LENGTH	135m
ESTIMATED VOLUME OF IMPORTED CLAY*	510m ³
ESTIMATED VOLUME OF EXCAVATED MATERIAL*	341m ³



TYPICAL BUND CROSS SECTION (SCALE 1:200)

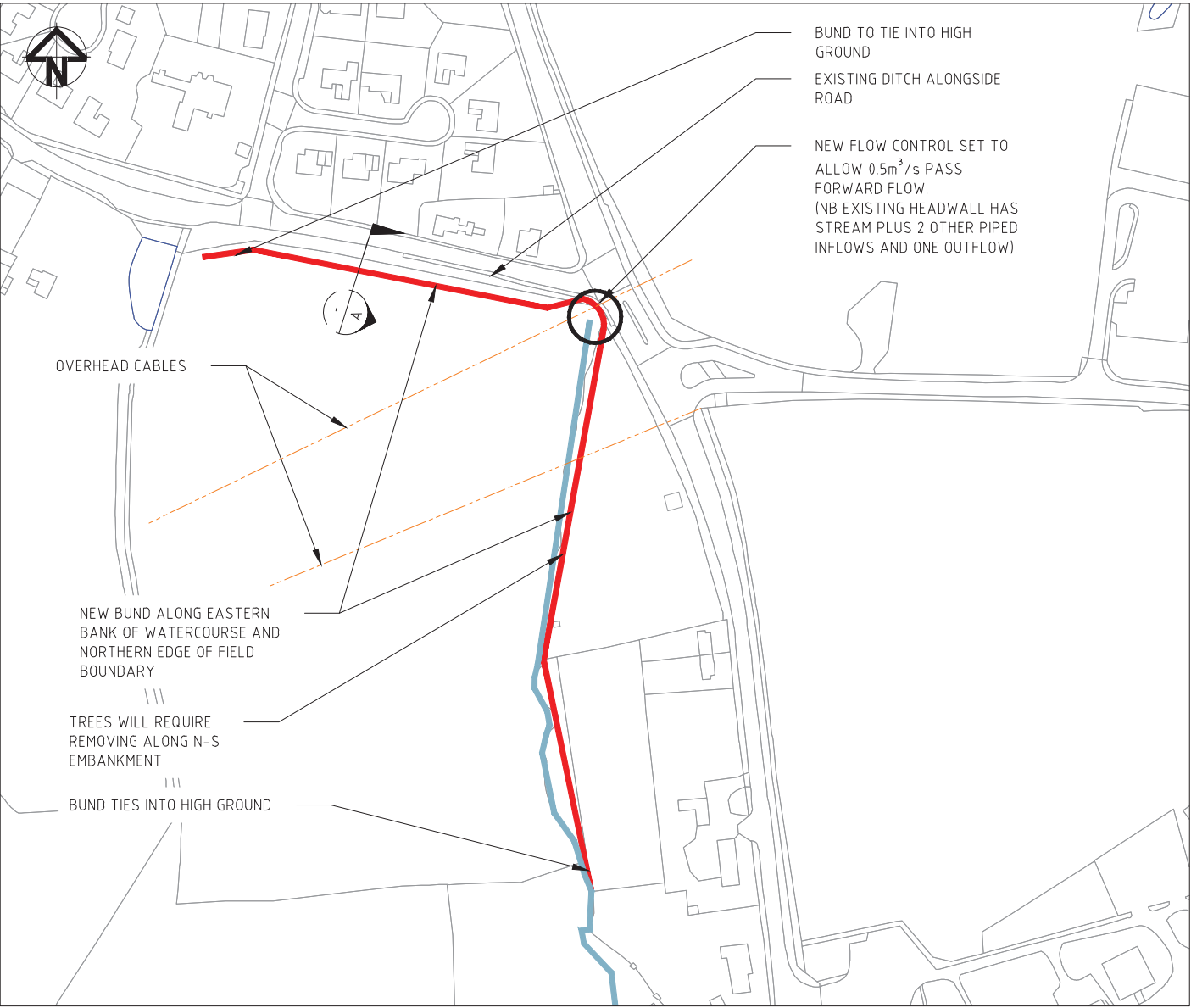
- Notes:
- DO NOT SCALE FROM THIS DRAWING. USE FIGURED DIMENSIONS ONLY.
 - ALL DIMENSIONS IN MILLIMETERS UNLESS NOTED OTHERWISE.
 - DETAILED DESIGN TO CONFIRM DIMENSIONS AND BUNDS.
 - DIMENSIONS SHOWN ARE TO ENABLE PRELIMINARY COST ESTIMATE FOR WORKS ONLY.
 - SPECIFICATION FOR BUNDS MATERIAL DIMENSIONS TO BE CONFIRMED AT DETAILED DESIGN ASSUMED LAND NOT CONTAMINATED.
 - TOPSOIL TO BE REMOVED TO CLAY FORMATION DEPTHS SHOWN ARE ASSUMED.
 - THE CLAY SHALL BE PLACED IN HORIZONTAL LAYERS NOT EXCEEDING 150mm CONSOLIDATED THICKNESS AND COMPACTED BY AN APPROVED METHOD TO AN AIR VOID CONTENT NOT EXCEEDING 5%.
 - NO BULKING FACTOR ASSUMED FOR EXCAVATION OR IMPORTED FILL*.

- Key:
- BUND, SEE TYPICAL CROSS SECTION
 - WATERCOURSE

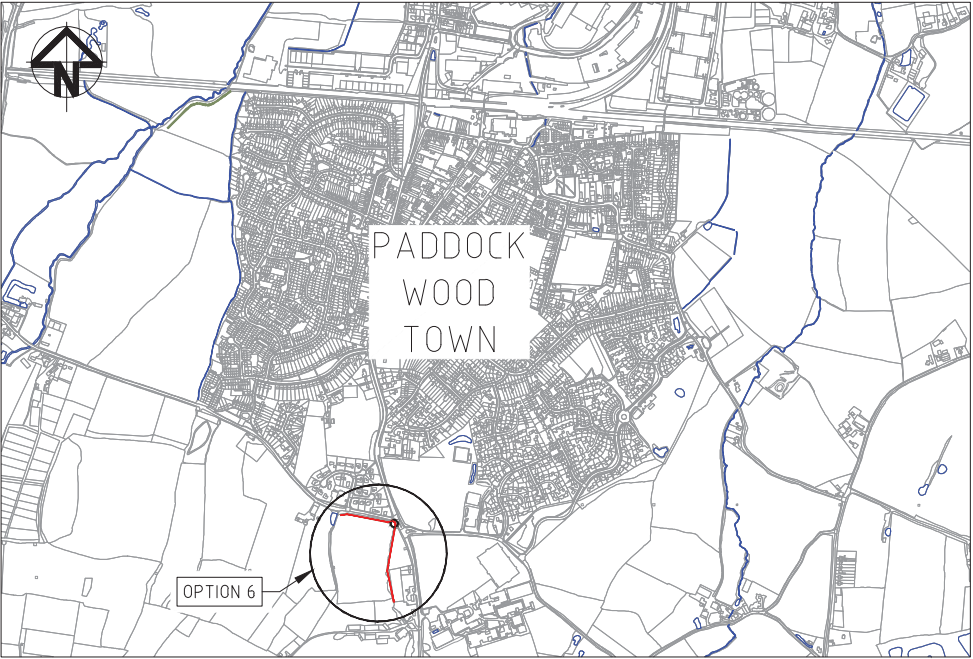
P1	FOR INFORMATION ONLY	09SEP14
Issue	Description	Date
Status	PRELIMINARY NOT TO BE USED FOR CONSTRUCTION	
Scales	AS SHOWN	Current Issue Signatures
Original Size	A3	Author R. Rafan
Datum	OS	Checker J. Delgado
Grid	GRID	Approver C. Bursnoll
Filename:	0504-UA006751-P1.dwg	
Client	Kent County Council kent.gov.uk	



Project	PADDOCK WOOD FLOOD ALLEVIATION STUDY	
Title	OPTION 4 REDUCE OVERLAND FLOW FROM RHODEN EAST TO RHODEN WEST	
Drawing No.	Project No.	Issue
0504	UA006751	P1

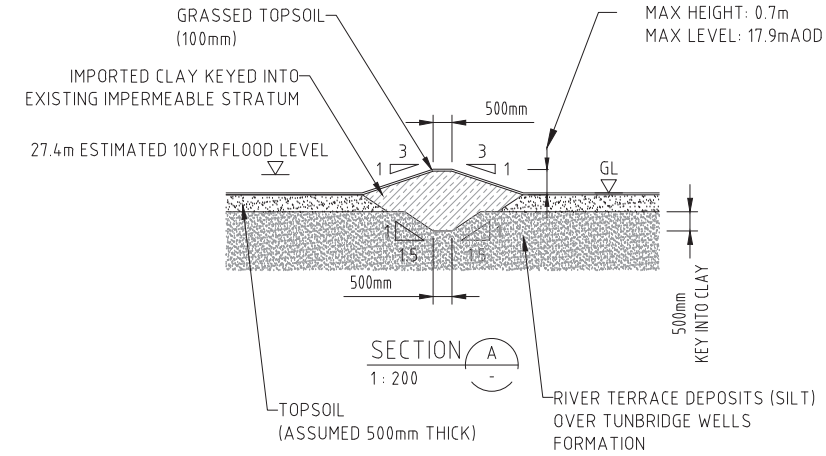


PLAN (SCALE 1:2500)



LOCATION PLAN (NTS)

EARTH BUND DETAILS	
TOTAL LENGTH	390m
ESTIMATED VOLUME OF IMPORTED CLAY*	1110m ³
ESTIMATED VOLUME OF EXCAVATED MATERIAL*	1820m ³



TYPICAL BUND DETAIL (SCALE 1:200)

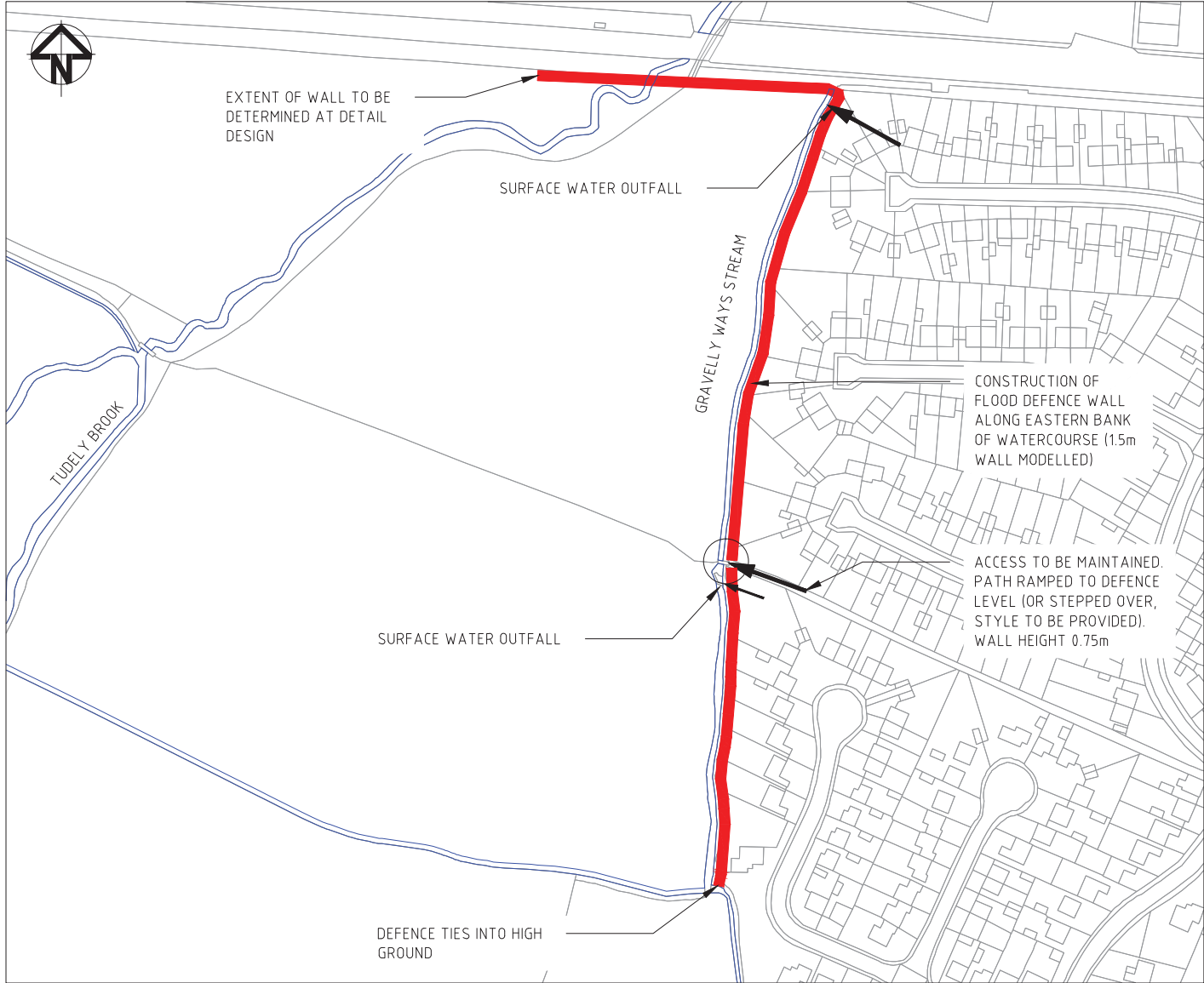
- Notes:
- DO NOT SCALE FROM THIS DRAWING. USE FIGURED DIMENSIONS ONLY.
 - ALL DIMENSIONS IN MILLIMETERS UNLESS NOTED OTHERWISE.
 - DETAILED DESIGN TO CONFIRM DIMENSIONS.
 - DIMENSIONS SHOWN ARE TO ENABLE PRELIMINARY COST ESTIMATE FOR WORKS ONLY.
 - SPECIFICATION FOR BUNDS MATERIAL DIMENSIONS TO BE CONFIRMED AT DETAILED DESIGN ASSUMED LAND NOT CONTAMINATED.
 - TOPSOIL TO BE REMOVED TO CLAY FORMATION CONTRACTOR TO CONFIRM DEPTH OF TOPSOIL. DEPTHS SHOWN ARE ASSUMED.
 - ASSUME THE CLAY SHALL BE PLACED IN HORIZONTAL LAYERS NOT EXCEEDING 150mm CONSOLIDATED THICKNESS AND COMPACTED BY AN APPROVED METHOD TO AN AIR VOID CONTENT NOT EXCEEDING 5%.
 - OVERHEAD CABLES PRESENT (SHOWN INDICATIVE ONLY).
 - NO BULKING FACTOR ASSUMED FOR EXCAVATION OR IMPORTED FILL.*

- Key:
- BUND, SEE TYPICAL CROSS SECTION
 - WATERCOURSE
 - OVERHEAD CABLES

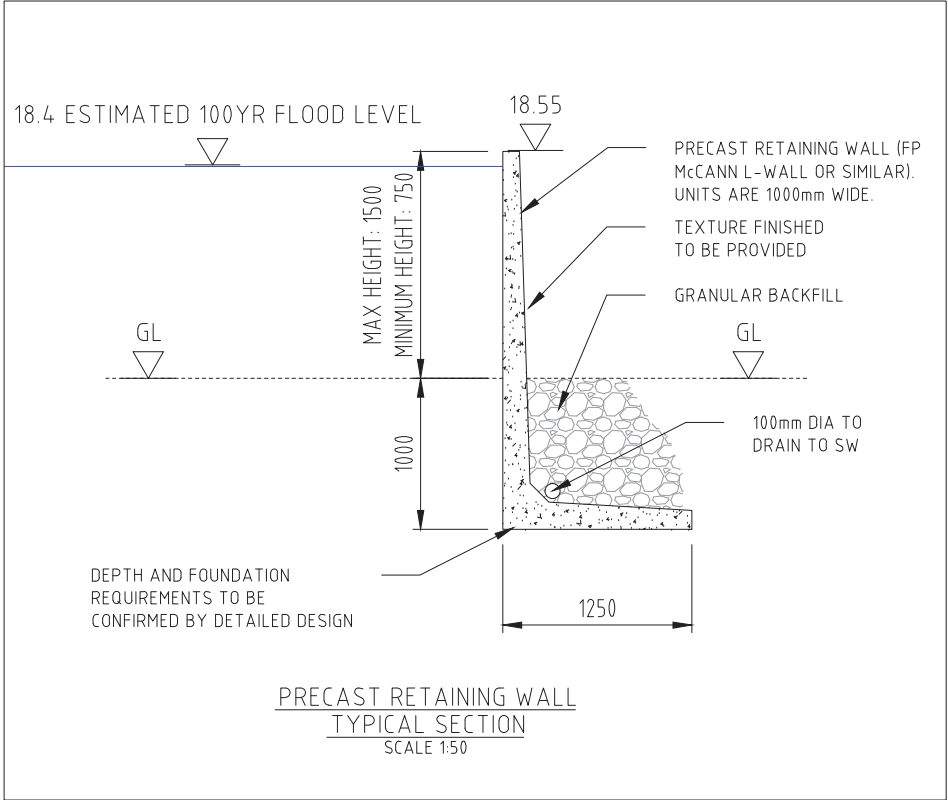
P1	FOR INFORMATION ONLY	09SEP14
Issue	Description	Date
Status	PRELIMINARY NOT TO BE USED FOR CONSTRUCTION	
Scales	AS SHOWN	Current Issue Signatures
Original Size	A3	Author R. Rafan
Datum	OS	Checker J. Delgado
Grid	GRID	Approver C. Bursnoll
Filename:	0506-UA006751-P1.dwg	
Client	Kent County Council	



Project	PADDOCK WOOD FLOOD ALLEVIATION STUDY	
Title	OPTION 6 PADDOCK WOOD STREAM STORAGE	
Drawing No.	0506	Project No.
Issue	P1	Issue




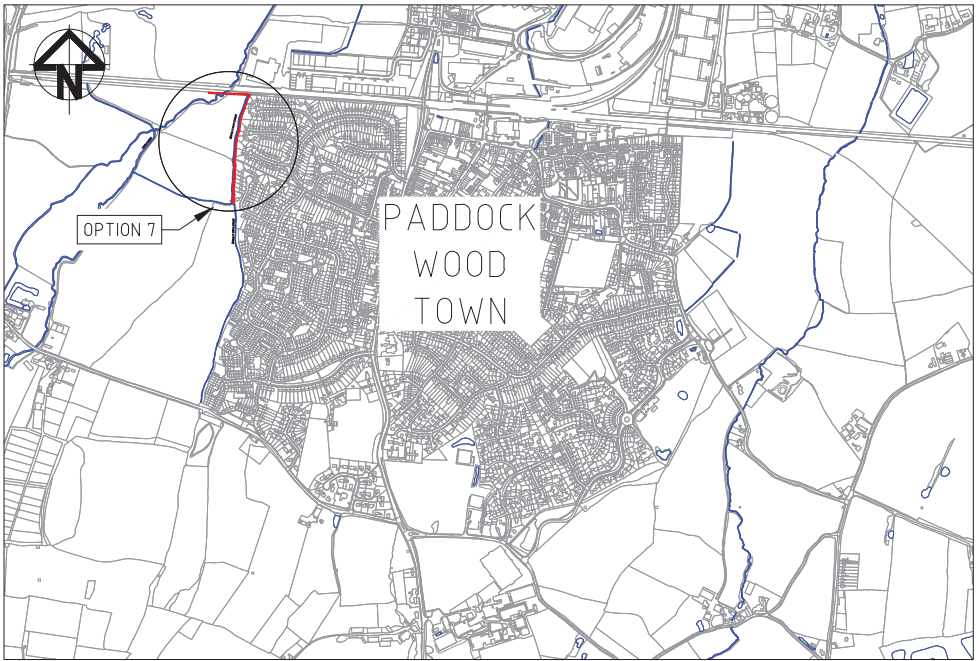
PLAN (SCALE 1:2500)



- Notes:
1. DO NOT SCALE FROM THIS DRAWING. USE FIGURED DIMENSIONS ONLY.
 2. ALL DIMENSIONS IN MILLIMETERS UNLESS NOTED OTHERWISE.
 3. DETAILED DESIGN TO CONFIRM DIMENSIONS.
 4. DIMENSIONS SHOWN ARE TO ENABLE PRELIMINARY COST ESTIMATE FOR WORKS ONLY.
 5. DETAILED DESIGN TO IDENTIFY SURFACE WATER DRAINS AND INCORPORATE INTO DESIGN.
 6. CONSULTATION REQUIRED WITH RESIDENTS TO DISCUSS ACCESS TO BACK - ASSUMED ONE CONTINUOUS DEFENSE OTHER THAN AT PATH.
 7. DETAILED DESIGN SHOULD CONSIDER MOVING WATERCOURSE TO LEFT, FILLING IN OLD CHANNEL AND BUILDING BUND/ WALL OVER. ALSO SHOULD CONSIDER MOVING AND IMPROVING TRASH SCREEN.
 8. DETAILED DESIGN TO CONSIDER ACCESS TO FOOTPATH AND RESIDENTIAL PROPERTIES.

- Key:
- PRECAST RETAINING WALL, SEE TYPICAL CROSS SECTION
 - WATERCOURSE
 - SURFACE WATER OUTFALLS

P1	FOR INFORMATION ONLY	09SEP14
Issue	Description	Date
Status	PRELIMINARY NOT TO BE USED FOR CONSTRUCTION	
Scales	1 : 2500 @ A3	Current Issue Signatures
Original Size	A3	Author R. Rafan
Datum	OS	Checker J. Delgado
Grid	GRID	Approver C. Bursnoll
Filename:	0507-UA006751-P1.dwg	
Client		
Project	PADDOCK WOOD FLOOD ALLEVIATION STUDY	
Title	OPTION 7 GRAVELLY WAYS WALL	
Drawing No.	0507	Project No. UA006751
Issue	P1	



LOCATION PLAN (NTS)