

## Dover Fastrack Newsletter #16

### IMPORTANT INFORMATION

#### Drop-In sessions:

2023

Wednesday 19 July

Wednesday 16 August

Wednesday 20 September

#### Time:

19/07/23 – 12:30pm to 13:30pm and 5pm-6pm

#### Location:

Colas Site Office, off Tesco Roundabout, Honeywood Parkway, CT16 3PS.

**Tel:** 07799 835 379

#### Emergency Breakdown Tel:

07974 617 256

#### Email:

[PLODoverFT@colas.co.uk](mailto:PLODoverFT@colas.co.uk)

#### Twitter:

@ColasDoverFT

#### Website:

[www.dover.gov.uk](http://www.dover.gov.uk)  
[www.kent.gov.uk](http://www.kent.gov.uk)

Report a problem at:  
<https://www.kent.gov.uk/roads-and-travel/report-a-problem>

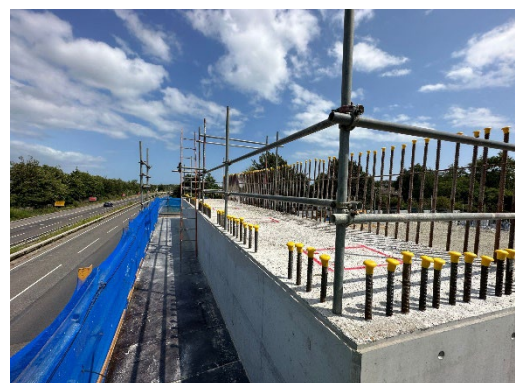
### Section 1 – Honeywood Parkway over A2

#### What has been happening?

Over the past month we have been preparing for the highly anticipated bridge lift which is scheduled to take place between Friday 14 July and Monday 17 July. A 150-tonne crane will lift 5, 30-metre-long beams, weighing 14.5 tonnes each onto the bridge abutments that have been built on either side of the A2.

The bridge lift is an important milestone for the Dover Fastrack project which will be Dover's first zero emission bus route providing a frequent and reliable service linking new developments in Whitfield with the town centre and Dover Priory Station.

In Section 1b North we have continued the construction of the embankment through the bulk fill operation and the retaining walls. We have also poured the crosshead beam. This is a concrete structure that spreads the load of the bridge across the five piles.



*Image: Crosshead in Section 1B south*

In Section 1B South, we have also completed the crosshead construction, continued to place fill material, and construct the retaining walls.

In Section 1A, we have continued to construct the drainage within the road, which will collect surface water from the gullies. We are also constructing the road capping. Capping provides strength to the ground surface that will lie beneath the road. Lastly, we have commenced the construction of two deep bore soakaways, which are drilled 25m into the ground and help to direct the surface water.

#### Looking ahead

In July, the bridge beams will be lifted into place. Once the beams have been installed, we will install the concrete deck works. We will also continue to construct the embankment in section 1B North and complete the concrete retaining walls. In section 1A we will continue the underground drainage and the installation of the road capping.

## Section 2 - B&Q Roundabout to Dover Road and the Dover Road Tie-In

### What has been happening?

In June, we carried out tarmac surfacing works on the traffic islands and around the drainage chambers on the section of new road. We continued to install new timber post and rail fencing and gates and made improvements to the BOAT crossing by installing a drainage soakaway.

We also carried out vegetation clearance throughout the section and completed the preparations of our new compound in Section 2b, ready for our move after the bridge lift.

### Looking ahead

Looking ahead into July, we will be installing chamber depth signs within the drainage chambers. We will also be relocating to our new compound in Section 2B.



Image: New Temporary Compound in Section 2B

## Section 3- Dover Road - Road Widening

The outstanding road widening will be revisited later in the year.

### Social Value



Image: National Volunteering Week - Dover Beach Clean

In June, it was National Volunteering Week. On Dover Fastrack, the project team ventured onto Dover Beach for a beach clean. Colas' CEO also came down to visit site and join the clean!

Later in June, I headed over to The Canterbury Primary school to deliver a bridge building workshop to Year 3. The students were challenged to building the strongest bridge with the materials they supplied and with the knowledge we imparted. Some even made suspension bridges!

## Traffic Management

### Section 1 Tesco Roundabout to Whitfield

Narrow lanes traffic management remains in place with reduced speed limit installed on the A2 between A256 Whitfield Interchange and A256 Whitfield Roundabout both east and westbound until November 2023.

Emergency Free Breakdown Recovery is available within the narrow lane section on the A2 via a dedicated 24hr Traffic Safety and Control Officer number on **07974 617 256**.

### Noise, Vibration and Dust monitoring

Vibration monitoring is set up in Section 1 North side of the A2 by Newlands and is regularly monitored by Colas.

Noise monitoring is also being carried out on Dover Road near the road closure and in Section 1b North by Newlands.

The installation of noise, ground, and vibration plates to monitor any earth movement helps us to ensure that we are staying below limits and are causing as little impact as we can.

## Useful Contacts



**PLO Tel:** 07799 835 379 **Emergency Breakdown Tel:** 07974 617 256



**Email:** [PLODoverFT@colas.co.uk](mailto:PLODoverFT@colas.co.uk)



**Twitter:** @ColasDoverFT



**Website:** [www.dover.gov.uk](http://www.dover.gov.uk) [www.kent.gov.uk](http://www.kent.gov.uk)

***Please join us at our next drop-in sessions at the Colas Compound on Honeywood Parkway on the 19 July 2023 between 12:30pm-13:30pm and 5pm – 6pm***

**Report a problem on the Road:** <https://www.kent.gov.uk/roads-and-travel/report-a-problem>