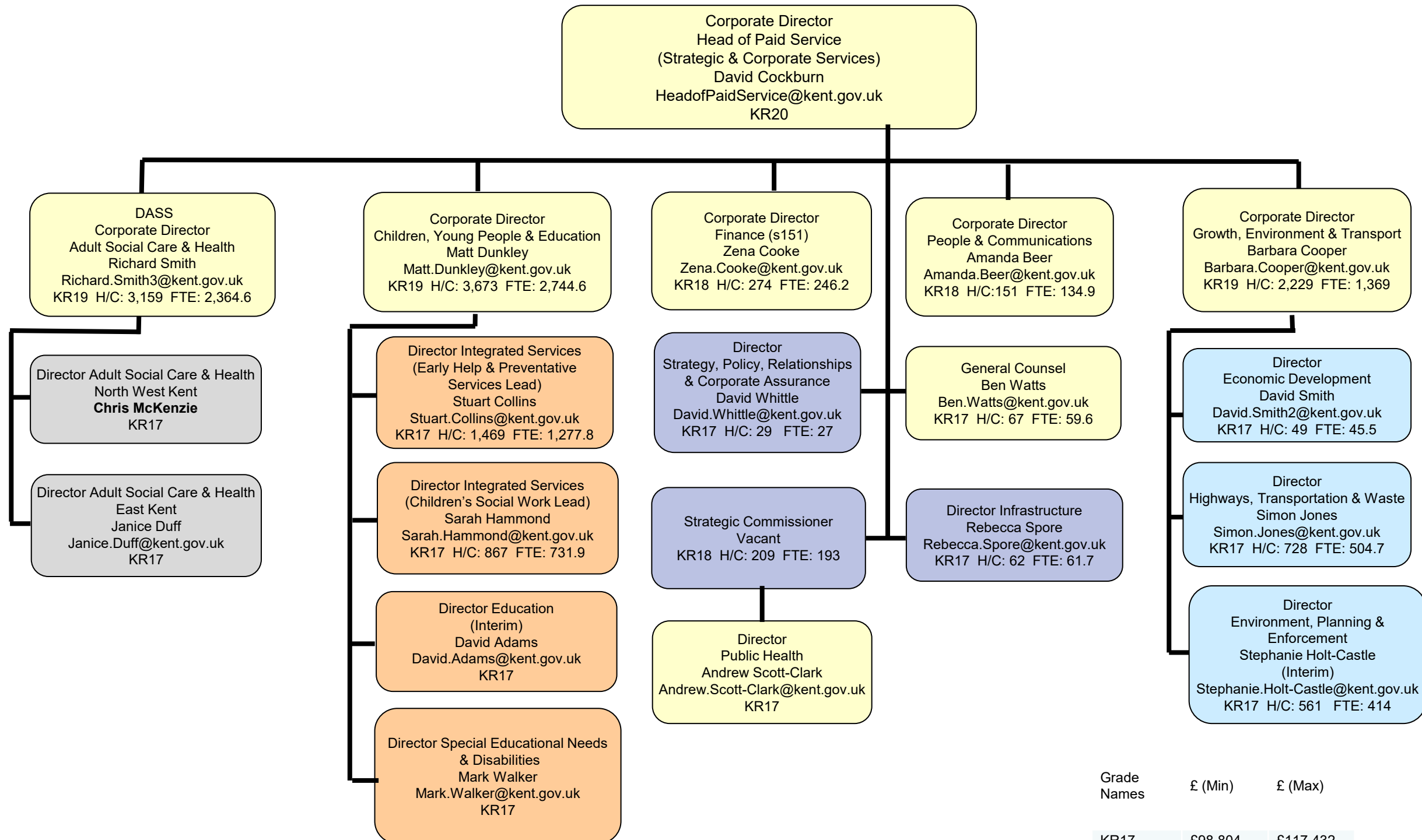


Leader Cabinet



KEY:
H/C – Headcount
FTE – Full Time Equivalent

CMT
Member of the Corporate Management Team

Structure as at February 2021
Staffing Numbers from Oracle HR as at March 2020

Grade Names	£ (Min)	£ (Max)
KR17	£98,804	£117,432
KR18	£123,753	£147,152
KR19	£147,888	£201,616
KR20	£202,661	£207,884