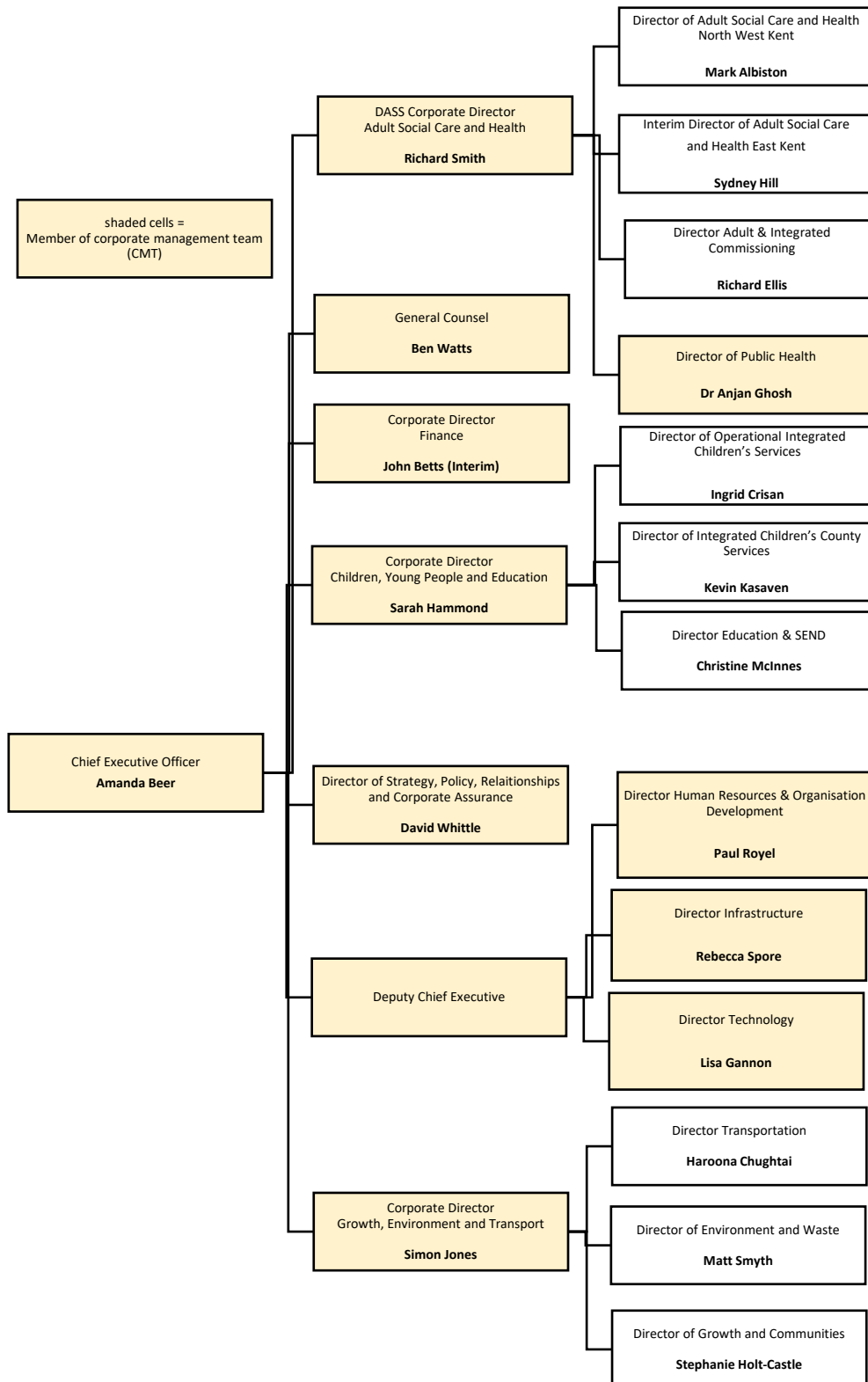


# Senior management structure

Last updated June 2024 – staffing figures May 2024

Visual structure chart

[View full written structure chart](#)



## Written structure chart

Chief Executive Officer – Strategic and Corporate Services

**Name:** Amanda Beer

**Email:** [chiefexecutivesoffice@kent.gov.uk](mailto:chiefexecutivesoffice@kent.gov.uk)

**Member of corporate management team:** Yes

**Direct reports:**

- [Corporate Director for Adult Social Care and Health](#)
- [Corporate Director for Children, Young People and Education](#)
- [Corporate Director for Finance](#)
- [Deputy Chief Executive](#)
- [Corporate Director for Growth, Environment and Transport](#)
- [Director of Strategy, Policy, Relationships and Corporate Assurance](#)
- [General Counsel](#)

Corporate Director for Adult Social Care and Health

**Name:** Richard Smith

**Email:** [Richard.smith3@kent.gov.uk](mailto:Richard.smith3@kent.gov.uk)

**Member of corporate management team:** Yes

**Pay grade:** KR19

**Head count:** 2,639

**Full time equivalent:** 2,251.9

**Direct reports:**

- [Director of Adult Social Care and Health for North West Kent](#)
- [Director of Adult Social Care and Health for East Kent](#)
- [Director Adult & Integrated Commissioning](#)
- [Director of Public Health](#)

*Director of Adult Social Care and Health for North West Kent*

**Name:** Mark Albiston

**Email:** [Mark.Albiston@kent.gov.uk](mailto:Mark.Albiston@kent.gov.uk)

**Member of corporate management team:** No

**Pay grade:** KR17



*Director of Adult Social Care and Health for East Kent*

**Name:** Sydney Hill

**Email:** [sydney.hill@kent.gov.uk](mailto:sydney.hill@kent.gov.uk)

**Member of corporate management team:** No

**Pay grade:** KR17

*Director Adult & Integrated Commissioning*

**Name:** Richard Ellis

**Email:** [Richard.Ellis2@kent.gov.uk](mailto:Richard.Ellis2@kent.gov.uk)

**Member of corporate management team:** No

**Pay grade:** KR17

*Director of Public Health*

**Name:** Dr Anjan Ghosh

**Email:** [Anjan.Ghosh@kent.gov.uk](mailto:Anjan.Ghosh@kent.gov.uk)

**Member of corporate management team:** Yes

**Pay grade:** KR17

*Corporate Director for Children, Young People and Education*

**Name:** Sarah Hammond

**Email:** [sarah.hammond@kent.gov.uk](mailto:sarah.hammond@kent.gov.uk)

**Member of corporate management team:** Yes

**Pay grade:** KR19

**Head count:** 3,890

**Full time equivalent:** 3148.7

**Direct reports:**

- [Director of Operational Integrated Children's Services](#)
- [Director of Integrated Children's County Services](#)
- [Director of Education & SEND](#)

*Director of Operational Integrated Children's Services*

**Name:** Ingrid Crissan



**Email:** [Ingrid.Crisan@kent.gov.uk](mailto:Ingrid.Crisan@kent.gov.uk)

**Member of corporate management team:** No

**Pay grade:** KR17

*Director of Integrated Children's County Services*

**Name:** Kevin Kasaven

**Email:** [kevin.kasaven@kent.gov.uk](mailto:kevin.kasaven@kent.gov.uk)

**Member of corporate management team:** No

**Pay grade:** KR17

*Director of Education & SEND*

**Name:** Christine McInnes

**Email:** [christine.mcinnis@kent.gov.uk](mailto:christine.mcinnis@kent.gov.uk)

**Member of corporate management team:** No

**Pay grade:** KR17

Corporate Director for Finance

**Name:** John Betts (Interim)

**Email:** [john.betts@kent.gov.uk](mailto:john.betts@kent.gov.uk)

**Member of corporate management team:** Yes

**Pay grade:** KR18

**Head count:** 358

**Full time equivalent:** 326.6

Deputy Chief Executive

**Name:** Vacant

**Email:**

**Member of corporate management team:** Yes

**Pay grade:** KR19

**Head count:** 393

**Full time equivalent:** 370.9

### Direct Reports

- [Director Human Resources & Organisation Development](#)
- [Director Infrastructure](#)
- [Director Technology](#)

*Director Human Resources & Organisation Development*

**Name:** Paul Royel

**Email:** [paul.royel@kent.gov.uk](mailto:paul.royel@kent.gov.uk)

**Member of corporate management team:** Yes

**Pay grade:** KR17

*Director Infrastructure*

**Name:** Rebecca Spore

**Email:** [rebecca.spore@kent.gov.uk](mailto:rebecca.spore@kent.gov.uk)

**Member of corporate management team:** Yes

**Pay grade:** KR17

*Director Technology*

**Name:** Lisa Gannon

**Email:** [Lisa.Gannon@kent.gov.uk](mailto:Lisa.Gannon@kent.gov.uk)

**Member of corporate management team:** Yes

**Pay grade:** KR17

Corporate Director for Growth, Environment and Transport

**Name:** Simon Jones

**Email:** [simon.jones@kent.gov.uk](mailto:simon.jones@kent.gov.uk)

**Member of corporate management team:** Yes

**Pay grade:** KR19

**Head count:** 2,141

**Full time equivalent:** 1,467.9

**Direct reports:**

- [Director of Transportation](#)
- [Director of Environment and Waste](#)
- [Director of Growth and Communities](#)

*Director of Transportation*

**Name:** Haroona Chughtai

**Email:** [Haroona.chughtai@kent.gov.uk](mailto:Haroona.chughtai@kent.gov.uk)

**Member of corporate management team:** No

**Pay grade:** KR17

*Director of Environment and Waste*

**Name:** Matt Smyth

**Email:** [matthew.smyth@kent.gov.uk](mailto:matthew.smyth@kent.gov.uk)

**Member of corporate management team:** No

**Pay grade:** KR17

*Director of Growth and Communities*

**Name:** Stephanie Holt-Castle

**Email:** [Stephanie.Holt-Castle@kent.gov.uk](mailto:Stephanie.Holt-Castle@kent.gov.uk)

**Member of corporate management team:** No

**Pay grade:** KR17

Director for Strategy, Policy, Relationships and Corporate Assurance

**Name:** David Whittle

**Email:** [david.whittle@kent.gov.uk](mailto:david.whittle@kent.gov.uk)

**Member of corporate management team:** Yes

**Pay grade:** KR17

**Head count:** 156

**Full time equivalent:** 150.8

General Counsel

**Name:** Ben Watts

**Email:** [benjamin.watts@kent.gov.uk](mailto:benjamin.watts@kent.gov.uk)

**Member of corporate management team:** Yes

**Pay grade:** KR17



**Head count: 90**

**Full time equivalent: 85**