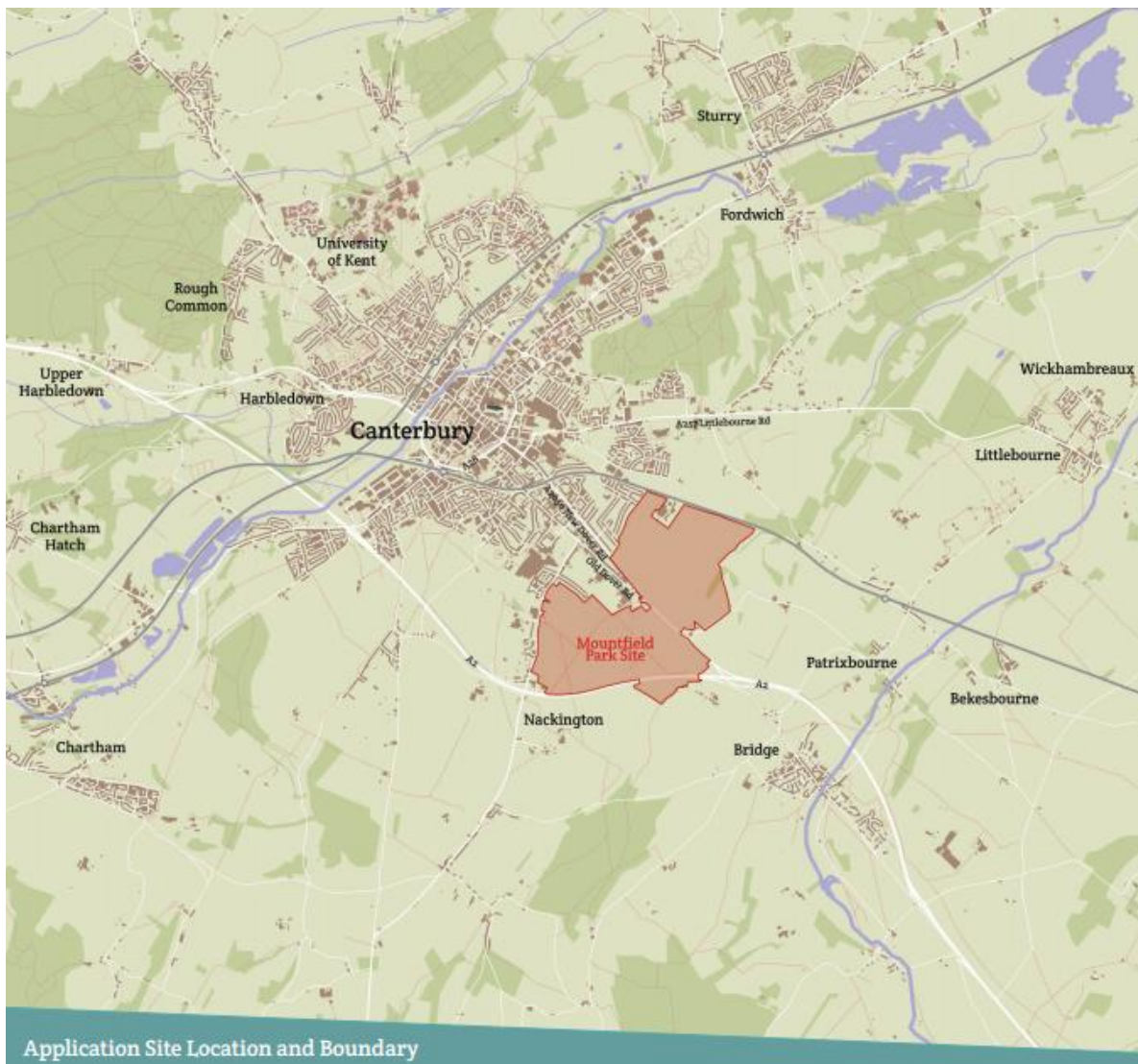


Commissioning Primary Provision in East Kent (Canterbury District)



Opportunity

- Under current statutory guidance all new schools must be Free Schools and the Government has a commitment to open 500 Free Schools by 2020.
- A large housing development of 4,000 dwellings is planned for South Canterbury (Mountfield Park) and a planning application can be found on the Canterbury City Council website.



David Lock Associates on behalf of Corinthian Mountfield Ltd

- It is anticipated that the first 100 homes will be completed by March 2018.
- Sites have been secured by Kent County Council for two 2FE Primary schools, with the first 2FE school planned for opening with 1FE capacity in September 2019
- We would be interested in seeing **Wave 13** applications for a 2FE Primary school which could accommodate **1FE** of pupil demand by **September 2019**.

Introduction

The County Council's Commissioning Plan for Education Provision 2017-21 sets out Kent County Council's commissioning intentions, including that linked to new housing development.

Under current statutory guidance all new schools must be Free Schools and the Government has a commitment to open 500 Free Schools by 2020. This provides an opportunity to work with colleagues in order to explore whether a strategic approach to establish a new Primary Free School on the South Canterbury development would be the best option.

Access to the first of the two new schools is to be provided by roads included within Phase 1a of the development.

Educational Need

KCC as the Local Authority has a statutory duty to ensure sufficient school places are available. Our means of doing this is through the County Council's Commissioning Plan for Education Provision in Kent 2016-20. This is a five year rolling plan which is updated annually. It sets out our future plans for securing school places across all types and phases of education in Kent. A copy of the plan can be viewed from this link: www.kent.gov.uk/educationprovision

A new edition of the Commissioning Plan 2017-21 is expected to be approved by KCC Cabinet in January 2017. The Forecast tables on page 3 are taken from this new edition.

There are currently 35 Primary schools in the Canterbury District across 8 planning groups. A total of 1,588 places are available in Reception Year and currently there are 1,499 pupils on roll in Reception Year with a surplus of 5.6% Kent County Council aim to maintain at least 5% surplus capacity in schools in each sector in each District to facilitate parental preferences.

The South Canterbury development will come within the Canterbury planning group of schools. The current total capacity of the schools in the Canterbury planning group is 3,198 school places and currently there are 2,926 children on roll which provides a surplus of 8.2%.

Canterbury Planning Group of Schools

| School | Category |
|-------------------------------------|-----------------|
| Blean Primary School | Community |
| Canterbury Primary School, The | Academy |
| Parkside Community Primary School | Community |
| Pilgrims' Way Primary School | Academy |
| St John's CE Primary School | Vol Cont |
| St Peter's Methodist Primary School | Vol Cont |
| St Stephen's Infant School | Community |
| St Stephen's Junior School | Academy |
| St Thomas' Catholic Primary School | Vol Aided |
| Wincheap Foundation Primary School | Foundation |

The South Canterbury development is also close to the Barham and Bridge planning group. The total capacity of the schools in the planning group is 770 school places and currently there are 713 on roll which provides a surplus of 7.4%.

| School | Category |
|---------------------------------|----------|
| Adisham CEP School | Academy |
| Barham CEP School | Vol Cont |
| Bridge & Patixbourne CEP School | Vol Cont |

Recently there has been an influx of families relocating from a North London Authority to ex MOD housing in Canterbury. A total of 120 families have now relocated to the Howe Barracks site (now named Howe Green) and it is expected that a further 80 families will relocate in the future. By September 2016, 123 primary aged children had come forward for school places and there were also 67 children below statutory school age. These children do not feature in the forecasts below.

The Tables below set out the school based forecast surplus/deficit capacity summaries:

Year R

| Planning Group | 2015-16 capacity | 2015-16 (A) | 2016-17 (F) | 2017-18 (F) | 2018-19 (F) | 2019-20 (F) | 2020-21 (F) | 2020-21 capacity |
|--------------------------------|------------------|-------------|-------------|-------------|-------------|-------------|-------------|------------------|
| Canterbury | 465 | 57 | 58 | 75 | 68 | 49 | 56 | 465 |
| Barham and Bridge | 110 | 10 | 19 | 16 | 19 | 14 | 14 | 110 |
| Chartham and Petham | 80 | 8 | 19 | 9 | 12 | 1 | 6 | 80 |
| Littlebourne and Wickhambreaux | 33 | 5 | 6 | 1 | -7 | -2 | -3 | 30 |
| Sturry and Marshside | 98 | 0 | 2 | 5 | 5 | 6 | 7 | 104 |
| Herne | 90 | 0 | 0 | 11 | -7 | 6 | 3 | 90 |
| Herne Bay | 375 | 21 | 15 | 31 | 45 | 23 | 27 | 345 |
| Whitstable | 360 | 9 | 3 | 10 | 39 | 31 | 32 | 360 |
| Canterbury | 1,611 | 110 | 123 | 157 | 175 | 128 | 142 | 1,584 |

All Year Groups

| Planning Group | 2015-16 capacity | 2015-16 (A) | 2016-17 (F) | 2017-18 (F) | 2018-19 (F) | 2019-20 (F) | 2020-21 (F) | 2020-21 capacity |
|--------------------------------|------------------|-------------|-------------|-------------|-------------|-------------|-------------|------------------|
| Canterbury | 3,154 | 344 | 356 | 367 | 341 | 343 | 355 | 3,265 |
| Barham and Bridge | 754 | 42 | 51 | 56 | 65 | 65 | 69 | 770 |
| Chartham and Petham | 446 | 22 | 41 | 44 | 57 | 55 | 57 | 541 |
| Littlebourne and Wickhambreaux | 215 | 28 | 31 | 18 | 13 | 10 | 4 | 215 |
| Sturry and Marshside | 668 | 8 | -2 | -15 | -15 | -18 | -15 | 715 |
| Herne | 630 | 7 | -4 | 8 | -2 | 0 | 2 | 630 |
| Herne Bay | 2,495 | 160 | 127 | 138 | 113 | 101 | 132 | 2,480 |
| Whitstable | 2,472 | 103 | 86 | 84 | 108 | 100 | 96 | 2,532 |

| Planning Group | 2015-16 capacity | 2015-16 (A) | 2016-17 (F) | 2017-18 (F) | 2018-19 (F) | 2019-20 (F) | 2020-21 (F) | 2020-21 capacity |
|------------------|---------------------|----------------|----------------|----------------|----------------|----------------|----------------|---------------------|
| Canterbury Total | 10,834 | 714 | 687 | 700 | 681 | 657 | 701 | 11,148 |

The Forecasts:

- Presume historic levels of inward migration.
- Include an element for housing based on historic build rates but do not take account of the potential pupil product from strategic sites included in the draft local plan.

The Kent Commissioning Plan (2017-21) sets out the following commissioning position for Primary provision in Canterbury district.

Canterbury Primary School Commissioning Position

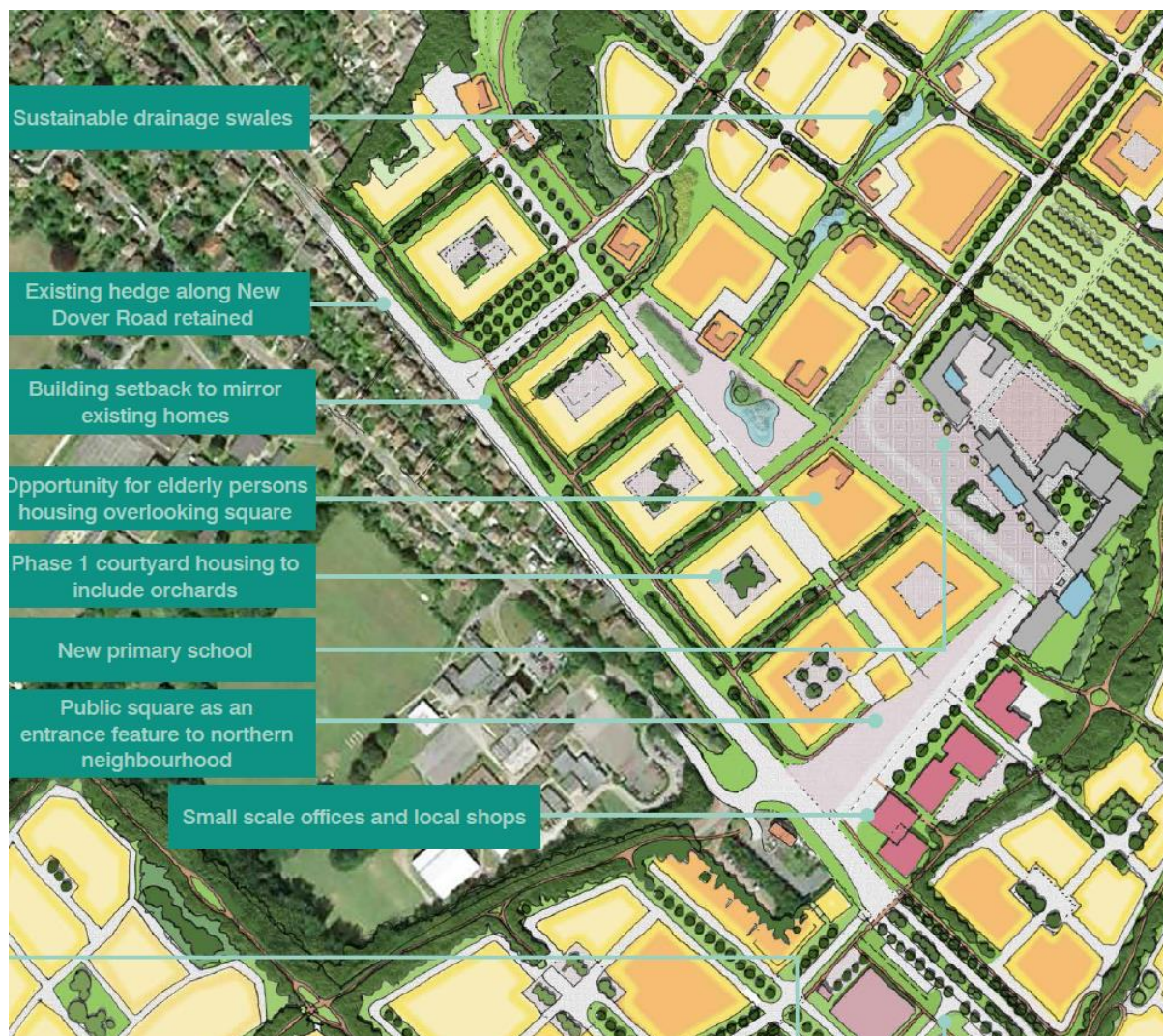
| Planning Group | By 2018-19 | By 2019-20 | 2020-21 to 2022-23 |
|--------------------------------|------------------------------------|---|--|
| Canterbury | | *1FE new provision 0.5FE at Pilgrim's Way PS | 5 FE of new provision 1 FE at Wincheap PS |
| Sturry and Marshside | | | 2FE new provision in Sturry/Broad oak 1.5 FE expansion of an existing school (Hersden PS) |
| Littlebourne and Wickhambreaux | 0.16FE at Wickhambreaux CEPS | | |
| Herne Bay/Herne | | 1FE new provision in Herne Bay | 3FE new provision in Herne Bay 1 FE at Briary PS |
| Whitstable | 0.5 FE at Whitstable Junior School | | 1FE new provision in Whitstable |

* South Canterbury (Mountfield Park)

The first of the two 2FE Primary schools is located in the first phase of the development with access from New Dover Road. Below is an indicative timeline for the delivery of the first Primary school.

| Activity | Approximate Dates and Timings |
|--|-------------------------------|
| Agreement with Developers on Transfer of School Site | By September 2017 |
| Planning, Design and Procurement | 2017 to 2018 – 52 weeks |
| Construction, Fitting Out, ICT and Commissioning | 2018 to 2019 – 52 weeks |
| Aim to Open School | September 2019 |

Below is a snippet from the overall illustrative master plan drawn up by David Lock Associates that shows the site for the first Primary school.



Canterbury District Draft Local Plan

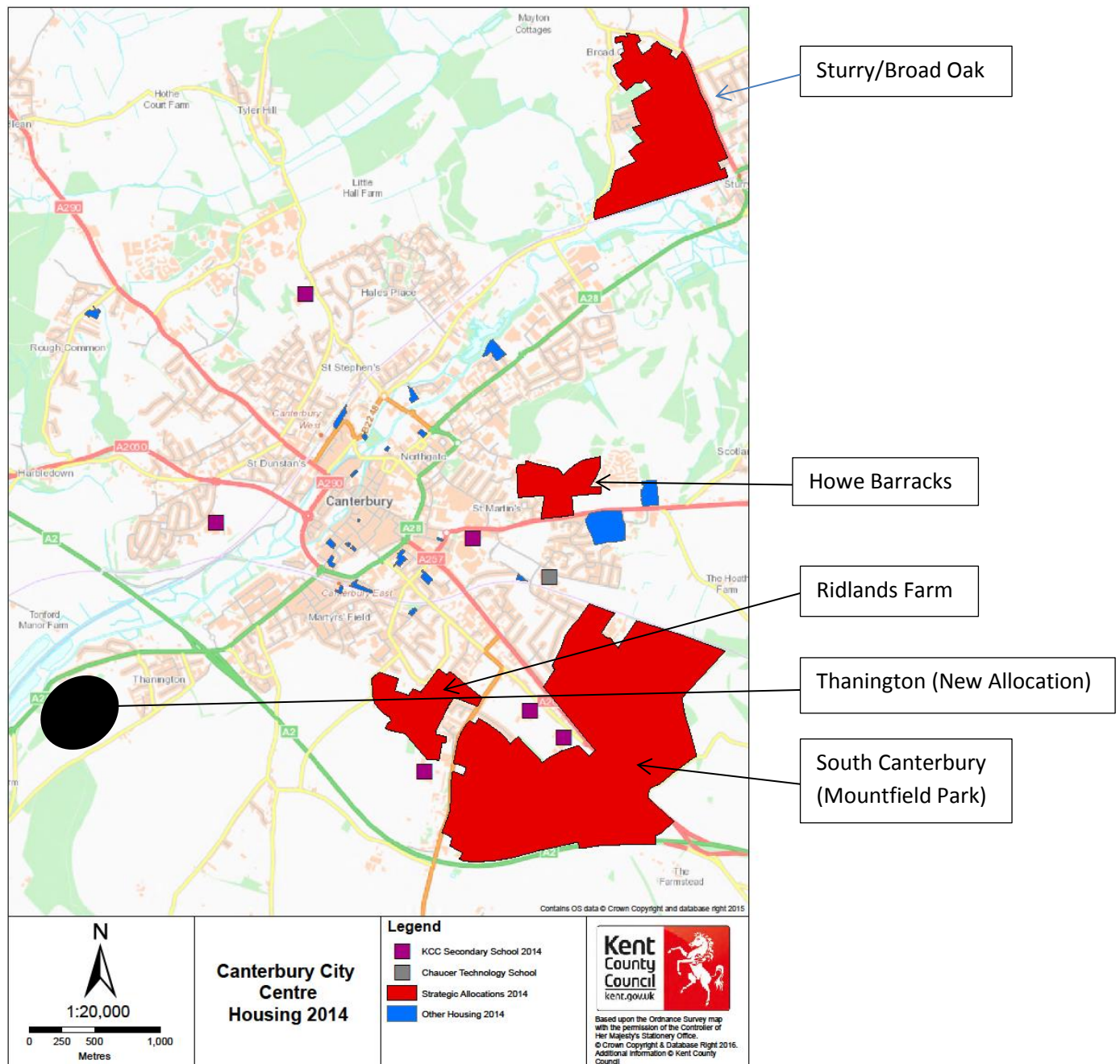
The total number of new dwellings proposed for Canterbury District is 15,600 over the Plan period up to 2031 with approximately 800 dwellings per annum. 800 dwelling per annum would be expected to produce 150 secondary aged pupils and 210 primary aged pupils each year.

- Pupil product is assessed assuming developments comprise 90% houses, 10% qualifying flats, using the following product ratios:

| Secondary | Primary |
|---------------|---------------|
| - Houses 0.20 | - Houses 0.28 |
| - Flats 0.05 | - Flats 0.07 |

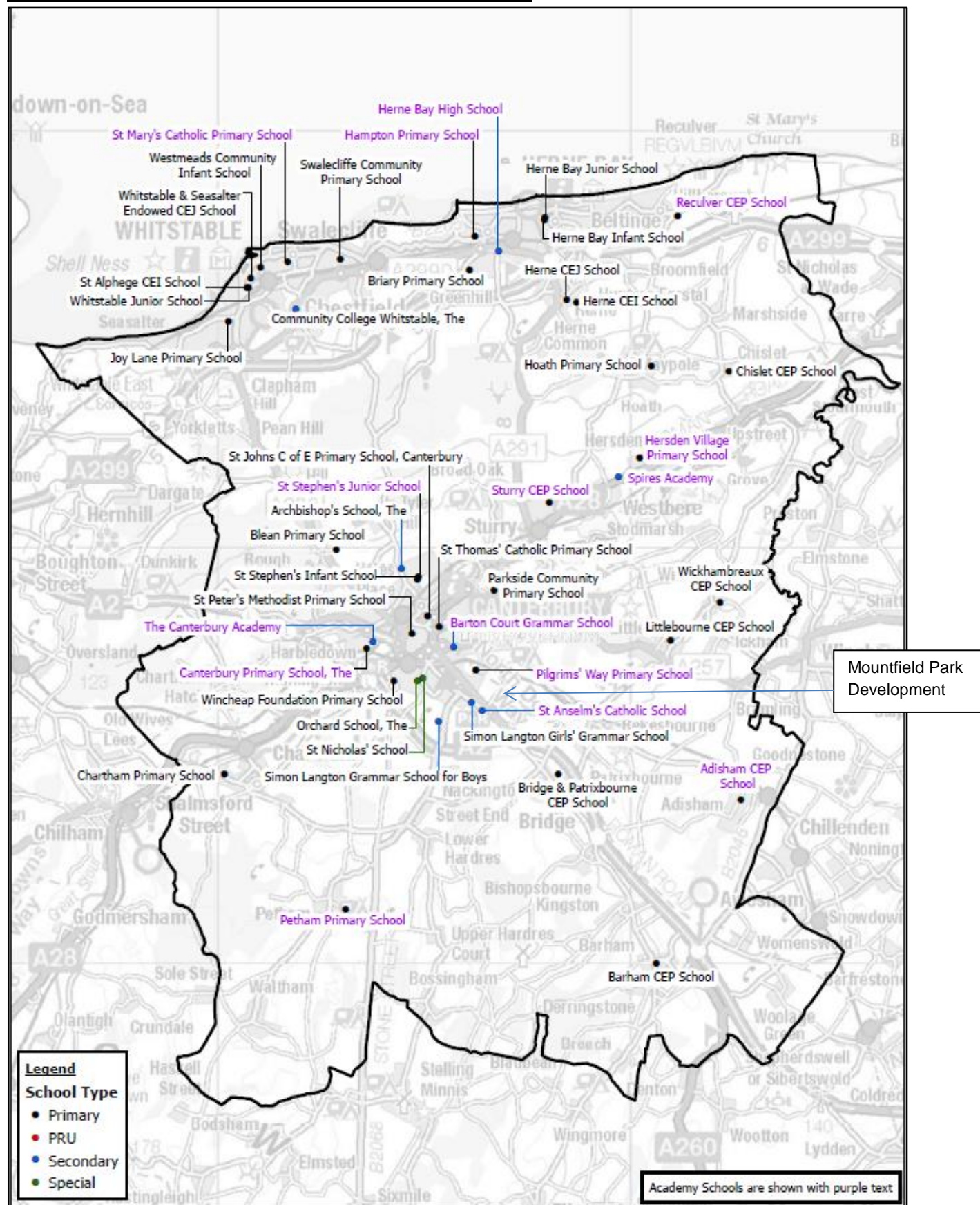
As well as Mountfield Park, there are other large strategic housing sites in Canterbury City proposed for inclusion in the draft local plan including the following:

| Development | Number of Dwellings |
|-------------------------------------|---------------------|
| Thanington | 1,150 |
| Howe Barracks | 500 |
| Land at Ridlands Farm/Hospital Site | 310 |
| St Martin's Hospital, Canterbury | 200 |
| Sturry/Broad Oak | 1,000 |



For more information visit: <https://www.canterbury.gov.uk/>

Canterbury District Schools as at September 2016



School location maps are available from: <http://www.kelsi.org.uk/school-management/data-and-reporting/management-information/school-location-maps>

Further information and reading:

Facts and Figures about Kent:

<http://www.kent.gov.uk/about-the-council/information-and-data/Facts-and-figures-about-Kent>

Area Profiles

<http://www.kent.gov.uk/about-the-council/information-and-data/Facts-and-figures-about-Kent/area-profiles>

The Commissioning Plan for Education Provision in Kent 2016-20:

www.kent.gov.uk/educationprovision

Kent County Council – Education and Young People’s Services “Vision and Priorities for Improvement”:

http://www.kelsi.org.uk/_data/assets/pdf_file/0020/55622/EYPS-Vision-and-Priorities-for-Improvement.pdf

For further information please contact:

Marisa White, Area Education Officer, East Kent

Tel: 03000 418794

Email: Marisa.White@kent.gov.uk